

4 October 2010

Agreement

Concerning the Adoption of Uniform Technical Prescriptions for Wheeled Vehicles, Equipment and Parts which can be Fitted and/or be Used on Wheeled Vehicles and the Conditions for Reciprocal Recognition of Approvals Granted on the Basis of these Prescriptions*

(Revision 2, including the amendments which entered into force on 16 October 1995)

Addendum 109: Regulation No. 110

Revision 1 – Amendment 2

Supplement 9 to the original version of the Regulation: Date of entry into force:
19 August 2010

Uniform provisions concerning the approval of:

- I. Specific components of motor vehicles using compressed natural gas (CNG) in their propulsion system;**
- II. Vehicles with regard to the installation of specific components of an approved type for the use of compressed natural gas (CNG) in their propulsion system**



UNITED NATIONS

* Former title of the Agreement: Agreement Concerning the Adoption of Uniform Conditions of Approval and Reciprocal Recognition of Approval for Motor Vehicle Equipment and Parts, don't at Geneva on 20 March 1958.

Insert a new paragraph 17.9.4., to read:

“17.9.4. For vehicles of categories M₂, M₃, N₂ and N₃¹, the filling unit (receptacle) shall comply with the drawing specifications detailed in Figure 2 of Annex 4F or with the drawing specifications detailed in Figure 1 of Annex 4F”.

Annex 4F,

Paragraph 2.1., amend to read:

“2.1. The filling unit shall comply with the requirements laid down in paragraph 3. and shall have the dimensions of paragraph 4.”

Paragraph 2.2., amend to read (including the insertion of a new footnote 2):

“2.2. Filling units designed in accordance with ISO 14469-1 first edition 2004-11-01¹ or ISO 14469-2:2007² and meeting all the requirements therein are deemed to fulfill the requirements of paragraphs 3. and 4. of this annex.

² Road vehicles — Compressed natural gas (CNG) refueling connector — Part 2: 20 MPa (200 bar) connector, size 2”

Paragraph 4.1., footnote 2 should be renumbered as footnote 3

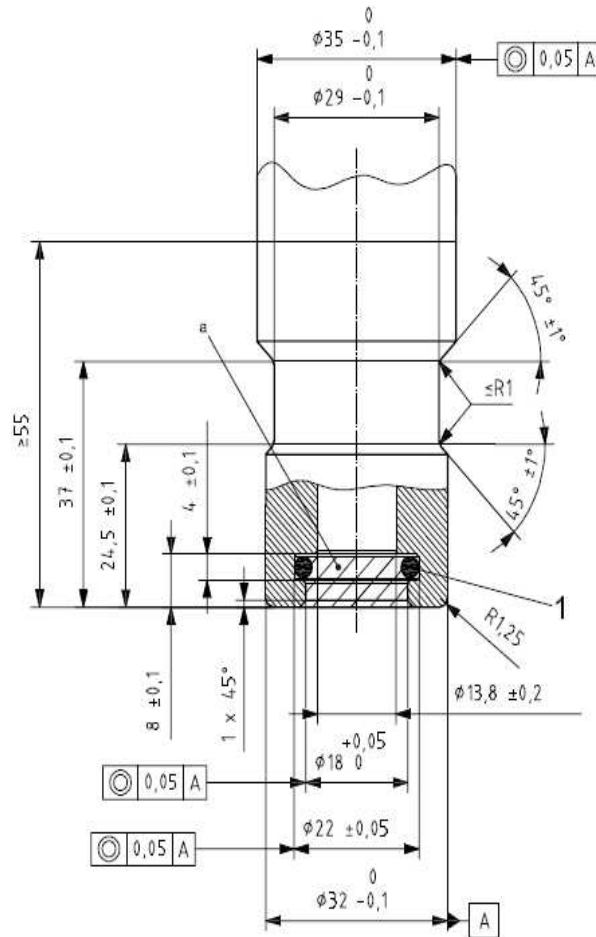
Insert a new paragraph 4.2., to read:

“4.2. Figure 2 shows the dimensions of the filling unit for vehicles of categories M₂, M₃, N₂ and N₃³”

Insert, after Figure 1, a new Figure 2, to read:


“Figure 2
 20 MPa Filling unit Size 2 (receptacle) for M₂, M₃, N₂ and N₃ vehicles

Dimensions in millimetres



Key

1 sealing ID = $\varnothing 15,47 \pm 0,1$ width = $\varnothing 3,53 \pm 0,2$

^a This area shall be kept free of all components 

Surface roughness < Ra 3,2 μm .

Sealing surface finish: 0,8 μm to 0,05 μm .

Material hardness: 75 Rockwell B (HRB 75) minimum.

..