

Transport Statistics Infocard

ESTONIA



• Area: 45,228 km² • Inhabitants: 1,319,100 (2018)

Contracting Party to 15 UN Transport Conventions (of which 9 UN Road Safety Conventions) under the purview of UNECE Inland Transport Committee.

Road and rail statistics

Number of passenger cars (thousand), 2017	726
Motorization rate (No. of passenger cars per thousand inhabitants), 2017	552
New registrations of alternative fuel passenger cars (% of total), 2017	0.1
Length of railway lines (km), 2017	1,161

Road casualty statistics

Fatalities, 2017	48
Injured, 2017	1,724

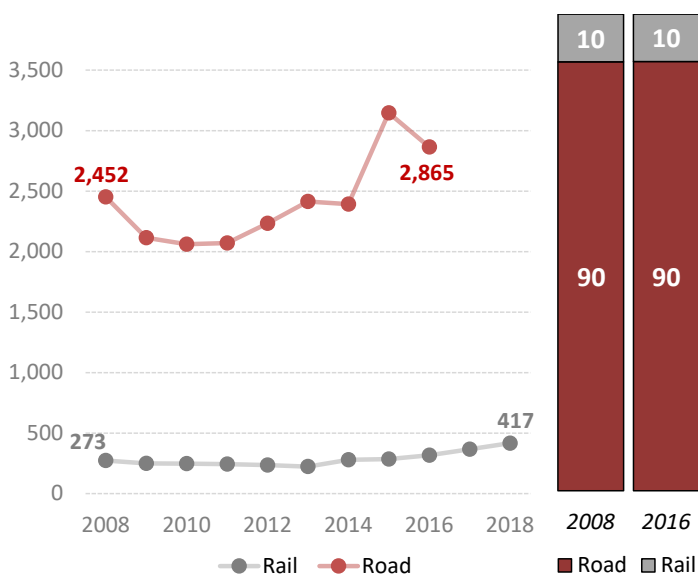
Road deaths per

Million inhabitants, 2017	36
100,000 passenger cars, 2017	7

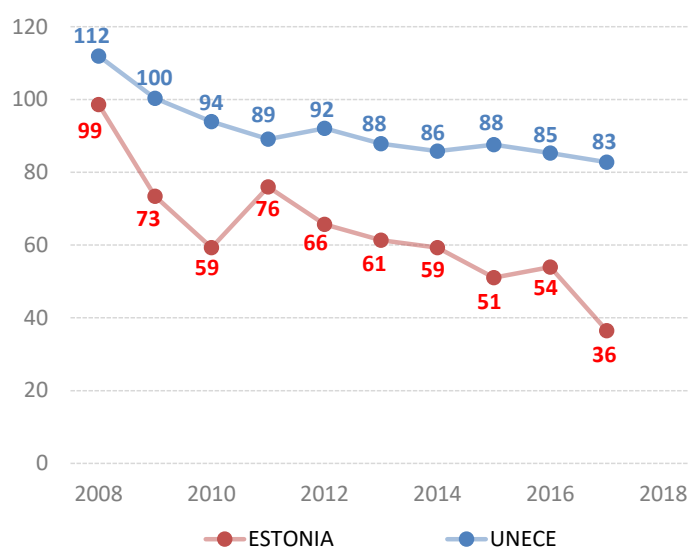
Vulnerable road users (% of total deaths)

Pedestrian and cyclists, 2013	39.5
Motorcyclists, 2009	2.0

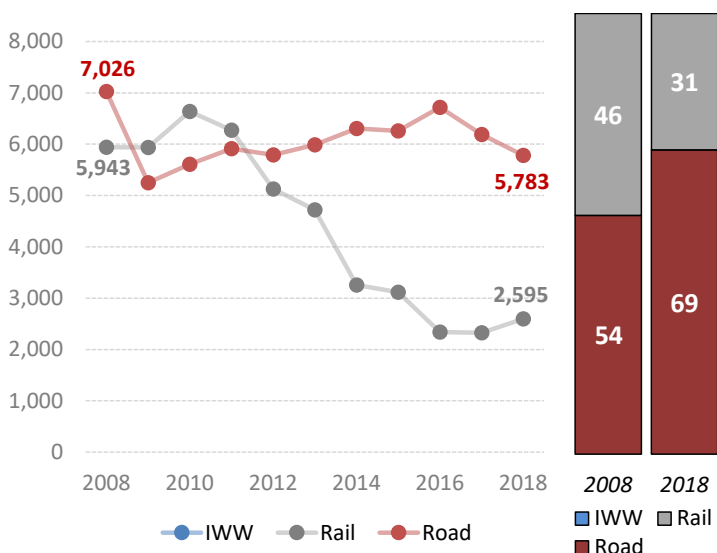
Passenger-km by mode (million) and modal share (%)¹



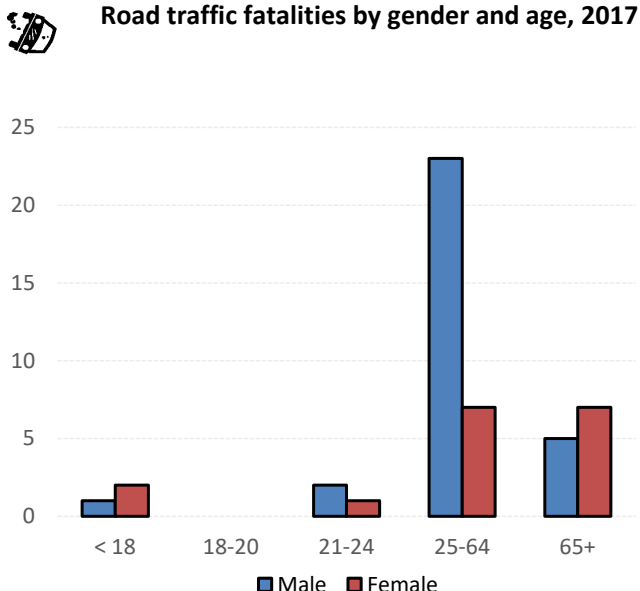
Road fatalities per million inhabitants



Tonne-km by mode (million) and modal share (%)



Road traffic fatalities by gender and age, 2017



Source: UNECE Transport Statistics Database.

Note: For road safety graphics, UNECE refers to the average value of ECE member States. IWW = inland waterways. Alternative fuel refers to fuel types other than petrol, diesel or hybrids.

¹ Road passenger-km includes buses for national transport and trolley buses and refers to public transportation only.