

**3** GOOD HEALTH  
AND WELL-BEING



**9** INDUSTRY, INNOVATION  
AND INFRASTRUCTURE



**11** SUSTAINABLE CITIES  
AND COMMUNITIES



# Inland Waterway Statistics: updates on an E-IWW Census

Alex Blackburn

Secretary, Working Party on Transport Statistics (WP.6)

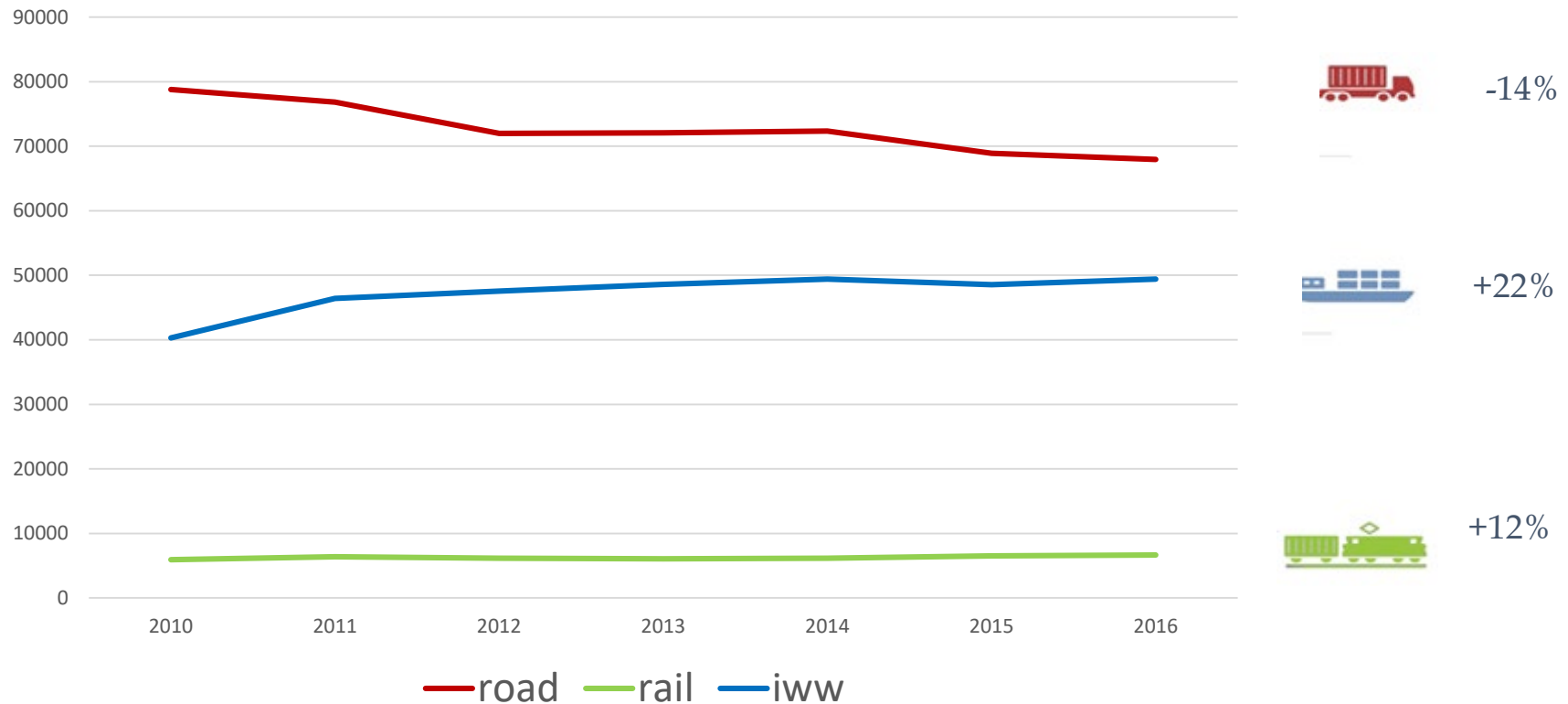
*Presentation to the Working Party on the Standardization of Technical  
and Safety Requirements in Inland Navigation (SC.3/WP.3)*

*Geneva, 19-21 June 2019*

TRANSPORT



# Existing Modal Split Data (Tonne-km Netherlands)

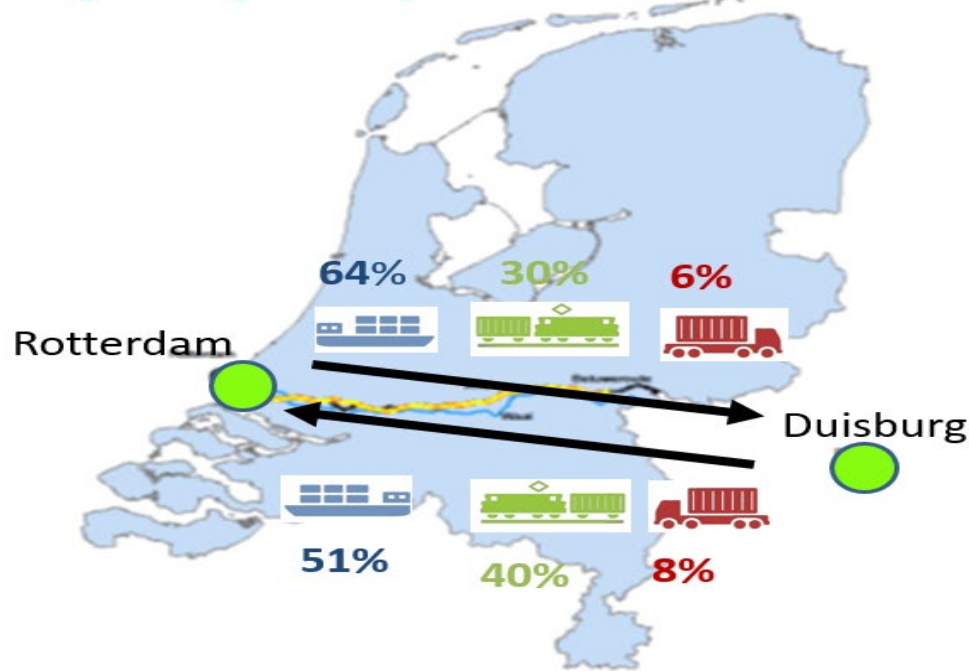


**UNECE has good IWW data for cross-modal comparisons at the national level. But what about specific corridors?**



# Visualizing freight volumes

## Modal split (TEU) on TEN-T corridor, 2016



From Statistics Netherlands



17

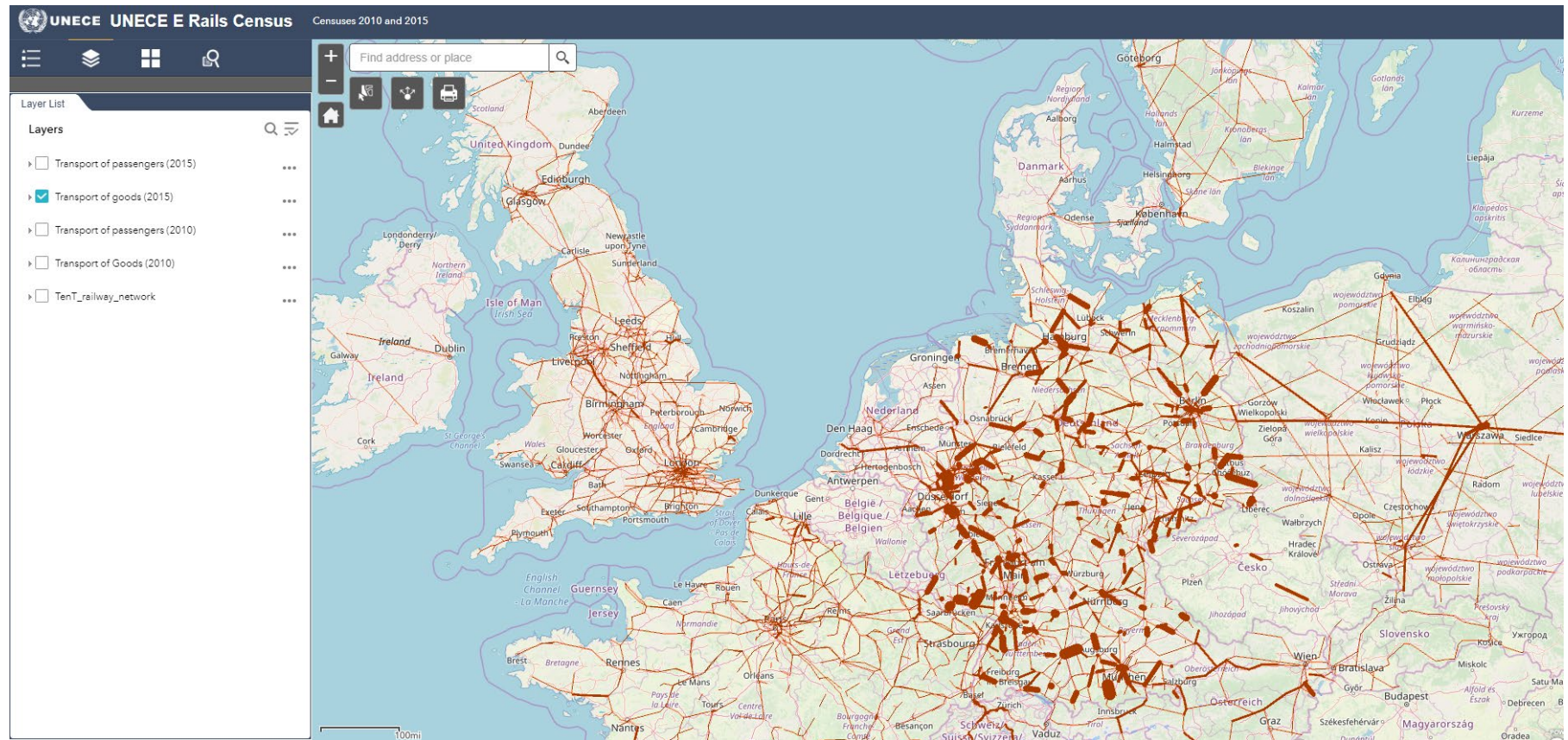


- See example of E-Road census map at [unece.org/trans/main/wp6/e-roads\\_maps.html](http://unece.org/trans/main/wp6/e-roads_maps.html).





# E-Rail Census map is now available



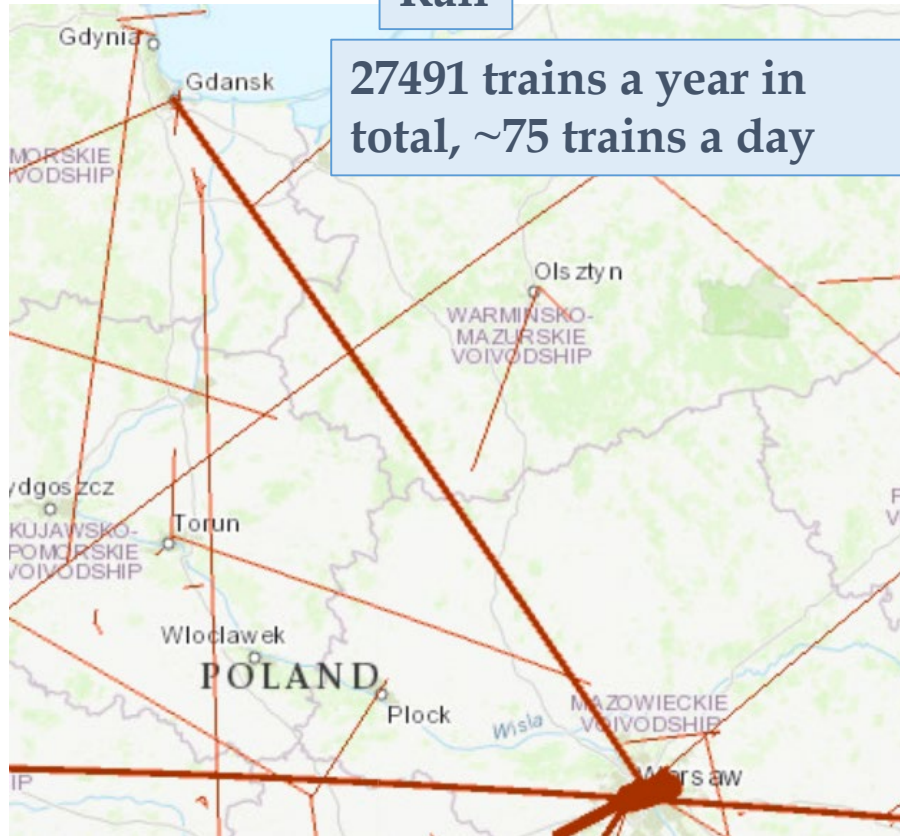
- See map at [unece.org/trans/areas-of-work/transport-statistics/statistics-and-data-online/e-rail-census/traffic-census-map.html](http://unece.org/trans/areas-of-work/transport-statistics/statistics-and-data-online/e-rail-census/traffic-census-map.html).
- N.b. Train numbers, not tonnes.



# Combining freight data (with a few assumptions)

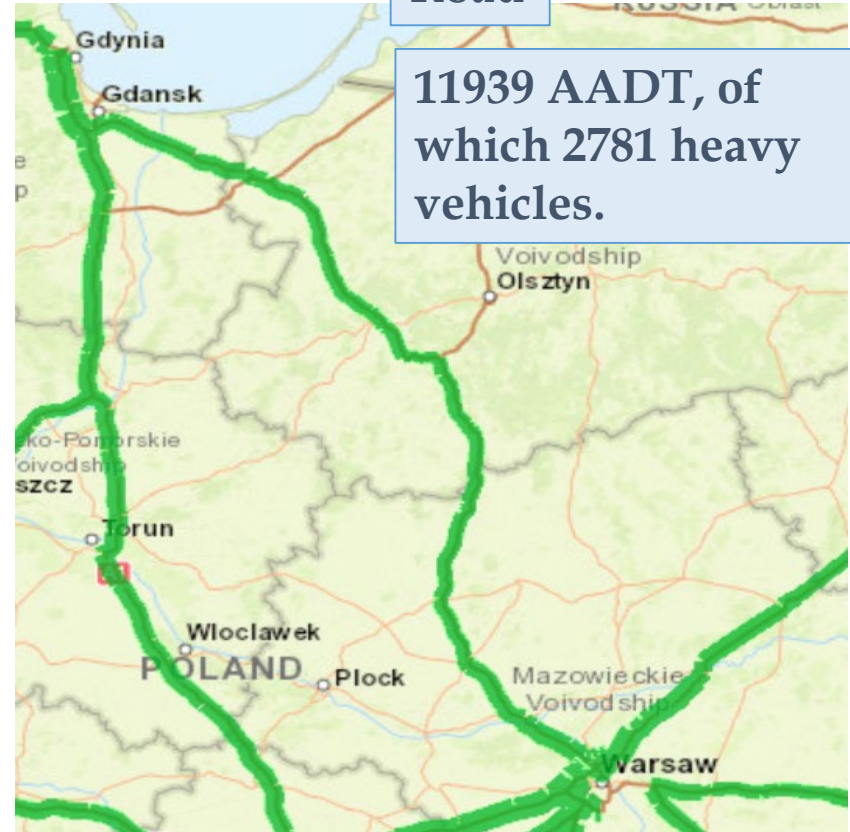
## Rail

27491 trains a year in total, ~75 trains a day



## Road

11939 AADT, of which 2781 heavy vehicles.



Two extra 60-container trains on the route each day both ways would reduce HGV road traffic by  $\approx 8\%$ .

What would a similar analysis show for Inland Waterways?



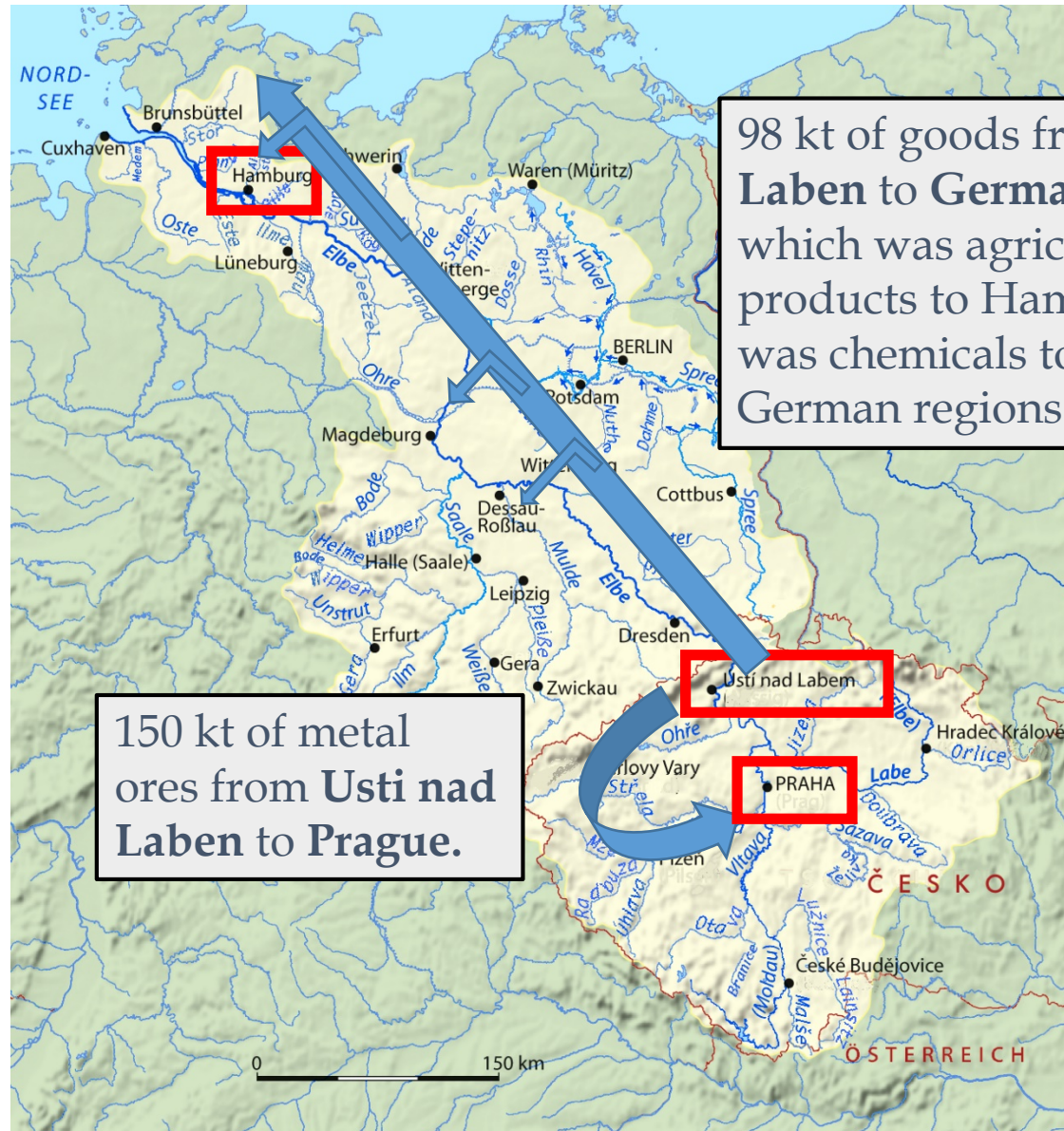
# WP.6 2019

- Working Party on Transport Statistics met 12-14 June 2019
- Decision on an E-IWW census:
- ***The Working Party took note of the wish of the Working Party on Inland Water Transport to collect similar traffic data as collected in the E-Road and E-Rail censuses for the E-Inland Waterway network. It agreed to keep this on the agenda, and explore with Czechia data availability.***





# Existing Eurostat Data Are Very Detailed





# Conclusions

- The idea of an E-IWW census will continue to be explored, but more work on concepts is needed.
- Existing IWW statistics collected by Eurostat can already be visualized. Work on this may realise results quicker than a completely new data collection.

Questions or Comments? Thank you! [BlackburnA@un.org](mailto:BlackburnA@un.org)

