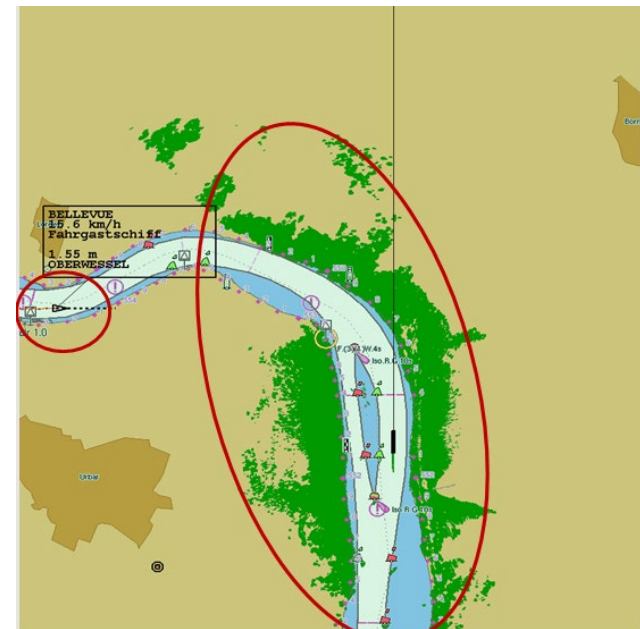
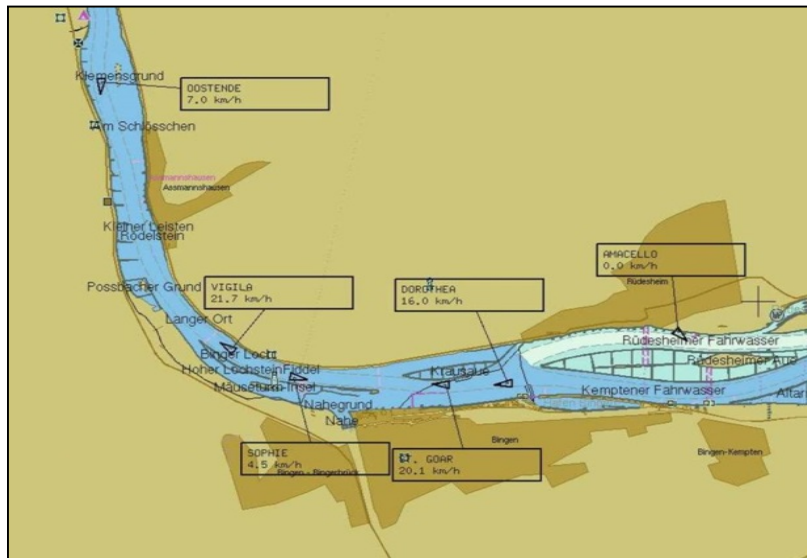
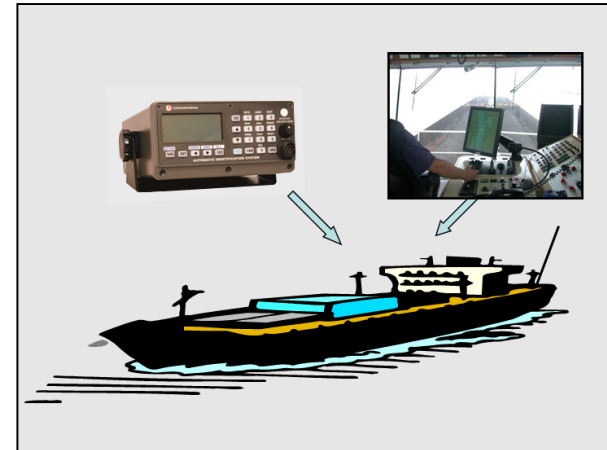
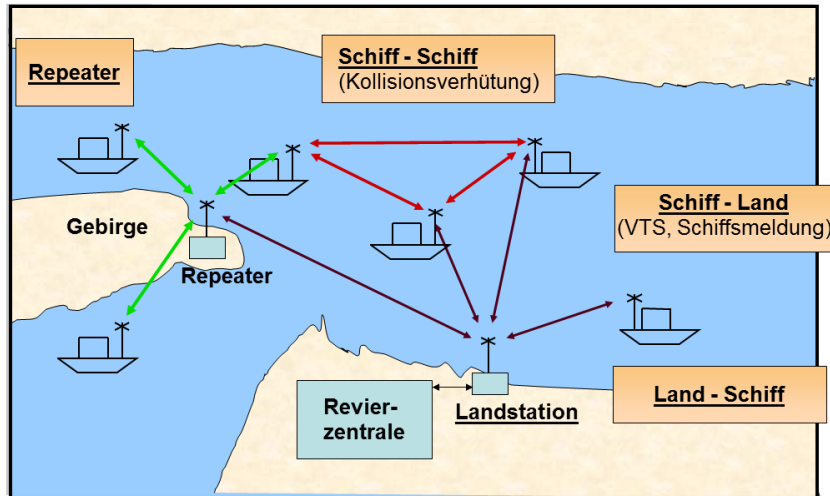


VTT Expert Group

Update EU VTT standard 2019

21-06-2019



24.5.2019

EN

Official Journal of the European Union

L 138/31

REGULATIONS

COMMISSION IMPLEMENTING REGULATION (EU) 2019/838

of 20 February 2019

**on technical specifications for vessel tracking and tracing systems and repealing Regulation (EC)
No 415/2007**

THE EUROPEAN COMMISSION,

Having regard to the Treaty on the Functioning of the European Union,

Having regard to Directive 2005/44/EC of the European Parliament and of the Council of 7 September 2005 on harmonised river information services (RIS) on inland waterways in the Community ⁽¹⁾, and in particular Article 5(1)(d), thereof,

Whereas:

*Publication in Official Journal of the European Union on 24. May 2019
It shall apply from 13 June 2020*

Previous EU VTT Standards (not applicable anymore)

- Commission Regulation (EC) No 415/2007 of 13 March 2007
- Commission Implementing Regulation (EU) No 689/2012 of 27 July 2012 amending Regulation (EC) No 415/2007

Actual UNECE VTT Standard

- Resolution No. 63 International Standard for Tracking and Tracing on Inland Waterways (VTT)

Actual CCNR VTT Standards

- Standard für Schiffsverfolgung und Aufspürung in der Binnenschifffahrt, Edition 1.2; 23.4.2013
- CESNI Test Standard Inland AIS, Edition 2017/2.0

Aim

- Streamlining of EU VTT Standard
- Focus on technical definition of Inland AIS mobile station
- Include only functions which are implemented into Inland AIS mobile station

Approach

- Update definitions and references: chapter 1
- Ease/shorten the general requirements: chapter 2
- Keep technical requirements unchanged: chapter 3
- Add technical requirements for AIS Class B: chapter 4
- Add technical requirements for Inland AIS AtoN: chapter 5
- Update Appendix C - Inland vessel and convoy types

Consequences

- For general requirements on VTT refer to other RIS related documents e.g. EU RIS Directive or RIS Guidelines

Inland AIS mobile station

- Technical functionality of Inland AIS mobile station remains unchanged
- ASM integrated into Inland AIS mobile station:
 - Inland ship static and voyage related data
 - Inland person on board
- Inland AIS Test standard remains unchanged
- Type approval remains valid

Consequences

ASM external / not integrated into Inland AIS mobile station

- ASM like ETA/RTA, water level, EMMA warning, signal status, etc. will be moved to:
Inventory for harmonised Inland AIS ASM in Europe published by the VTT EG (www.ris.eu/expert_groups/vtt)
- New ASM will be included in the for harmonised Inland AIS ASM in Europe (www.ris.eu/expert_groups/vtt)

AIS Aids to Navigation (AIS AtoN) report in Inland navigation

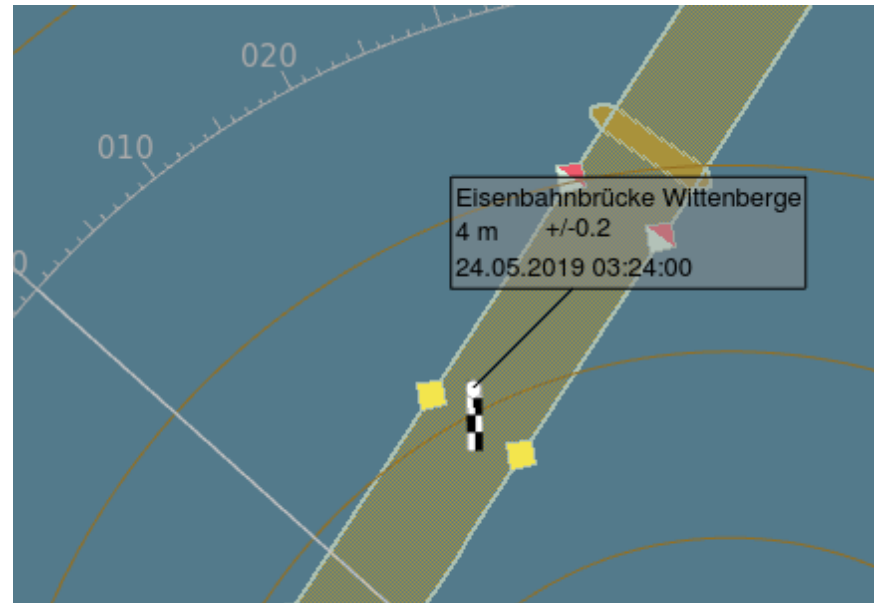
- List of Inland Aids to Navigation (AtoN) codes for use in AIS Message 21 published by the VTT EG
(www.ris.eu/expert_groups/vtt)

Inland AIS ASMs:

- Water levels message
- ETA/RTA
- Vertical bridge clearance message
- Signal lights message
- Maritime Geographic Notice message
- Text Message with ISRS code
- Convoy message
- Control message
- ASM capability request
- ASM capability response

Application Specific Message

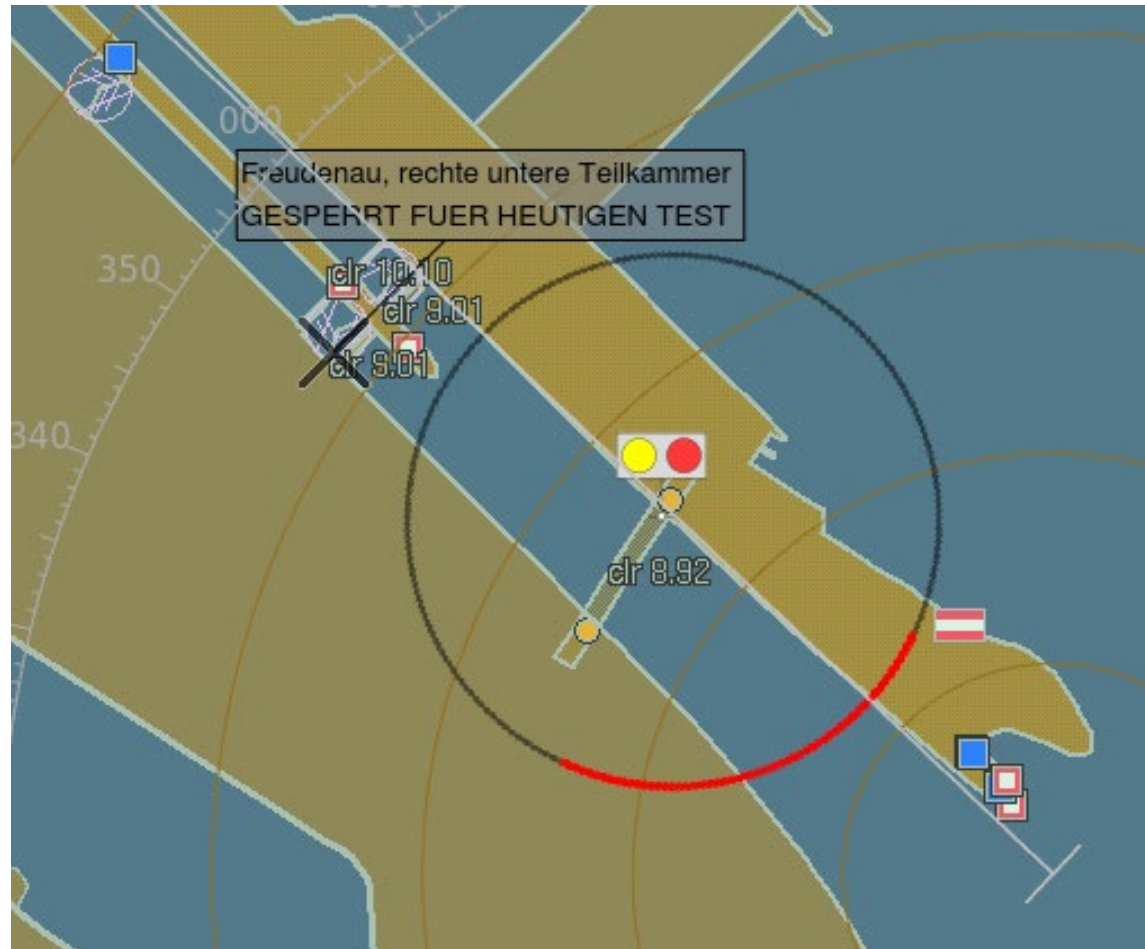
Vertical bridge clearance



<div> Water Level (0) ISRS Text (0) Bridge Clearance (3) ETA / RTA (1) </div>							
<div> <input type="text" value="Search text:"/> <input type="button" value="Advanced <<"/> <input type="button" value="Clear"/> <input type="button" value="Configure Filter..."/> <input type="button" value="Configure Colors..."/> </div>							
Country	Waterway	Kilometer	Bridge	Bridge clearance	Accuracy	Measurement time	Older than 12 h
AT	Donau	2001.5	Eisenbahnbrücke Krems	12 m	0.31	24.05.2019 03:24:00	Yes
AT	Donau	2119.4	Schleusenbrücke Abwinden-A...	1 m	0.2	24.05.2019 03:24:00	Yes
DE	Elbe	453.9	Eisenbahnbrücke Wittenberge	4 m	0.2	24.05.2019 03:24:00	Yes

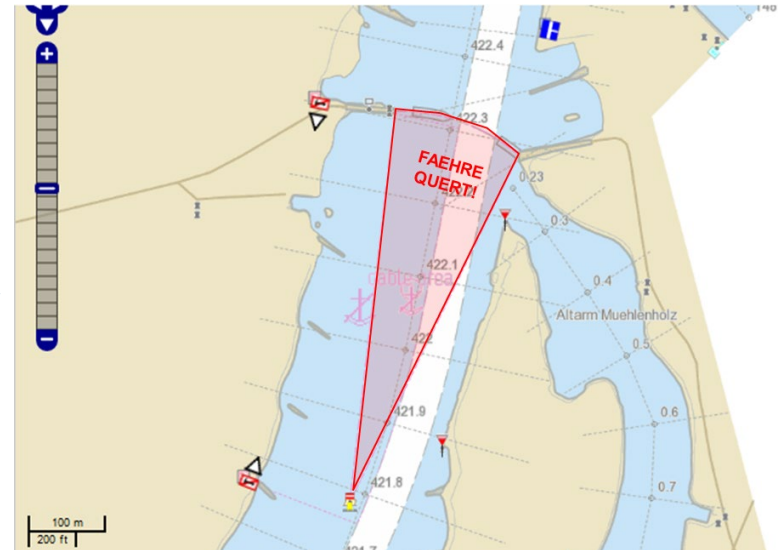
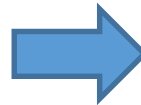
ASM

Signal station



Warning, when the cable ferry is crossing

Indication of a virtual caution area while a ferry (here cable ferry) is crossing

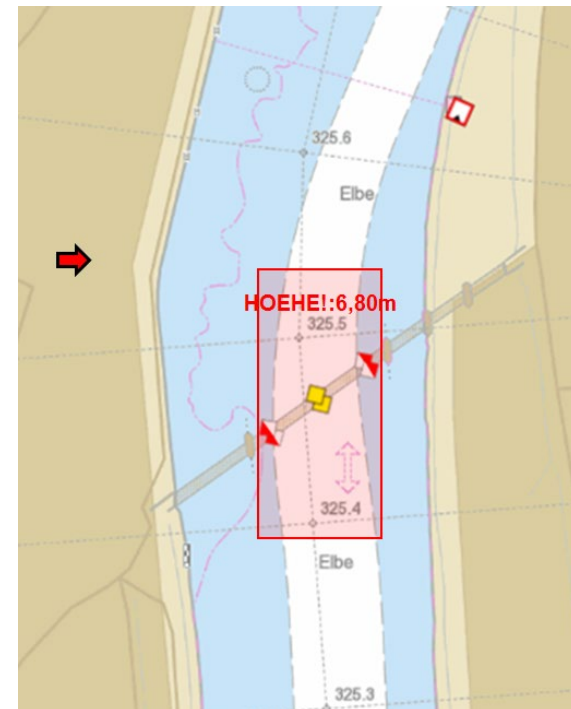
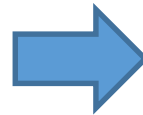
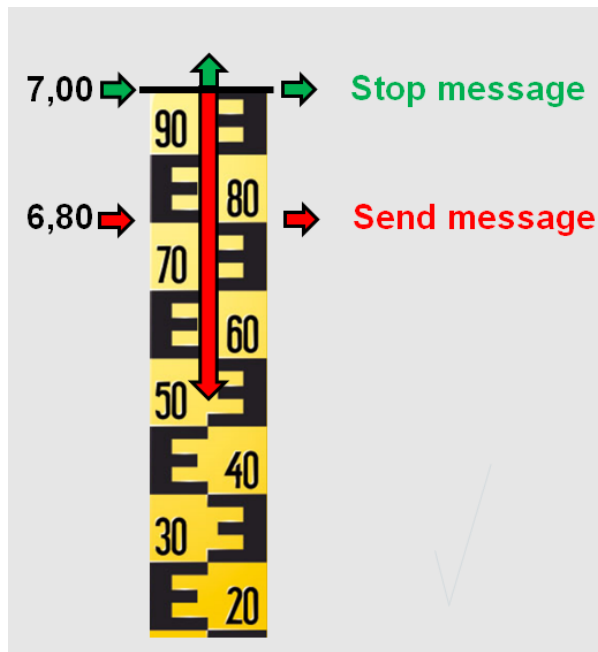


Cable ferry at the river Elbe

Virtual caution area while the ferry is crossing

Warning, when the vertical bridge clearance is low

Indication of currently limited vertical clearance under bridges (depending on water level)



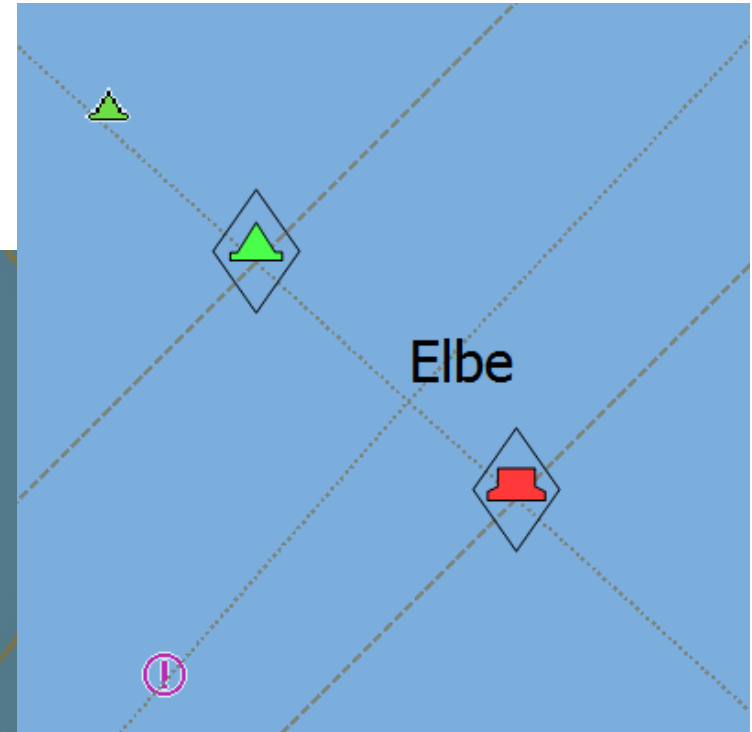
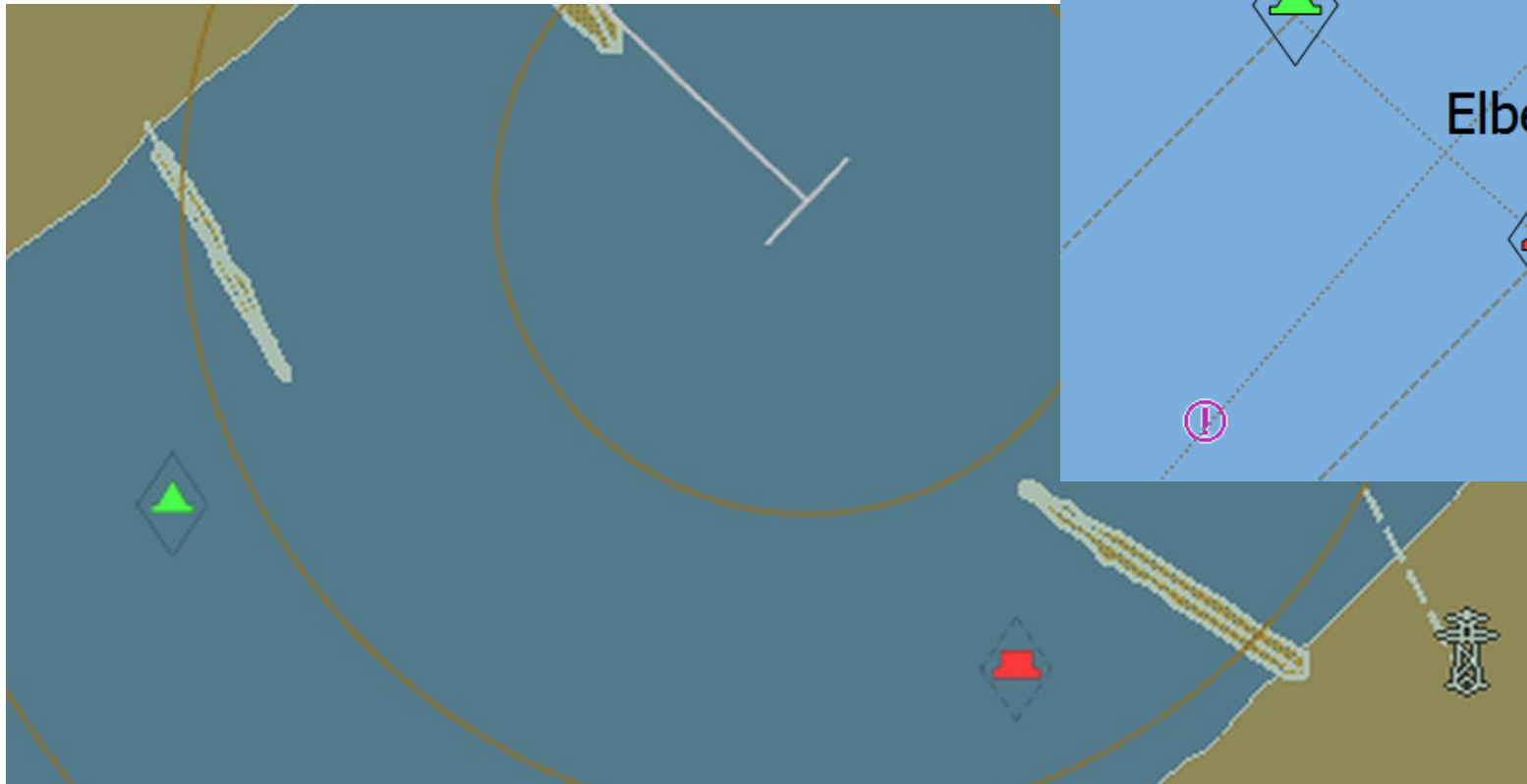
AIS Aids to Navigation Report Message (AIS AtoN)

- Information Paper on AIS Aids to Navigation Report Messages in Inland Navigation
- Inland AtoN Codes for Use in AIS Message 21

Visualisation of AIS information

- Technical requirements for the processing and visualisation of Inland AIS related data in inland ECDIS Displays

Physical Inland AIS AtoN on position



Physical Inland AIS AtoN off position / missing



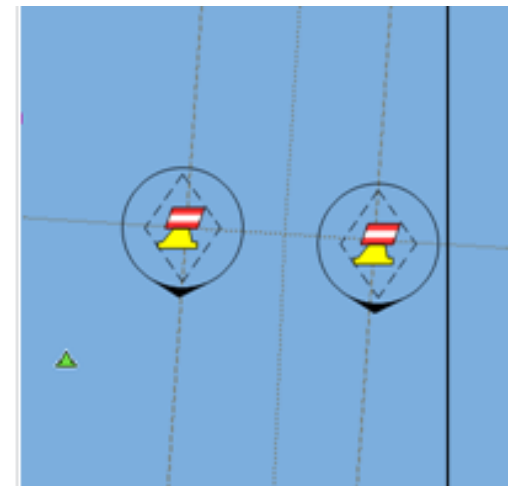
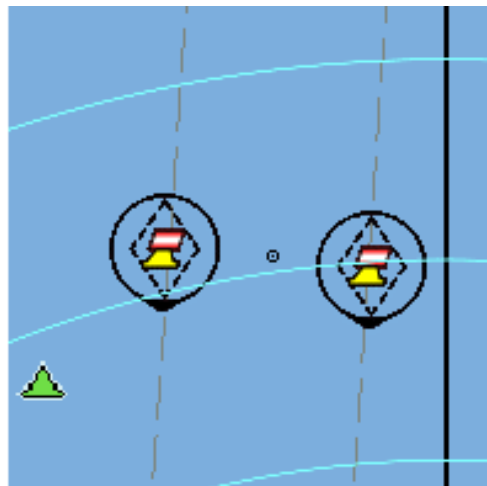
Virtual AIS AtoN, with direction of impact

Virtual AtoN - No Entry (Dir of impact):

Kombination of two signs with the same reference point:

inner symbol: head up

outer symbol: oriented to the direction of impact



EU VTT Standard

Commission Implementing Regulation (EU) 2019/838 of 20 Feb. 2019 on technical specifications for vessel tracking and tracing systems and repealing Regulation (EC) No 415/2007

Next steps:

- Provide updated EU VTT standard to other international bodies: CCNR, UNECE and CESNI
- Support update of UNECE Resolution No 63 (VTT)
- Support update of AIS Test Standards at CESNI/ES-TRIN
- Publish Inventory for European ASM
- Publish Table of additional Inland AIS AtoN types



Thank you for your attention

Stefan Bober

E-Mail: Stefan.Bober@wsv.bund.de