

# Status of UNECE data dissemination

*WP.6 Working Party on Transport Statistics  
Geneva, 7 - 9 June 2017*



# Overview

- **Ongoing updates**

- UNECE Statistical Database - [w3.unece.org/PXWeb/en](http://w3.unece.org/PXWeb/en)

Use our new Android mobile app to get statistics both in English and Russian

Rankings Profiles Charts Maps PDF

GDP in millions of USD adjusted by purchasing power parities, year 2015

United States: 18 026 000 (mln. of USD)

Powered by Leaflet

Previous Next

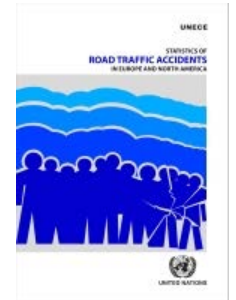
- Country Overviews**  
UNECE Member Countries in Figures
- Population and Gender**  
Country Profiles  
Work-life balance  
Migration  
Population  
Fertility, families and households  
Work and economy  
Education  
Public life and decision making  
Health and mortality  
Crime and violence  
Science and ICT
- Economy**  
Overview Tables  
National Accounts  
Labour Force & Wages  
Price Indices  
Industrial Production  
External Economic Relations  
Globalization Indicators
- Millennium Development Goals**  
Poverty, Employment and Hunger (MDG 1)  
Education Enrolment, Completion & Literacy (MDG 2)  
Gender in Education, Employment & Politics (MDG 3)  
Child Mortality and Immunization (MDG 4)  
Maternal and Reproductive Health (MDG 5)  
HIV/AIDS, Malaria and Tuberculosis (MDG 6)  
Environment, Water & Sanitation (MDG 7)
- Transport**  
Road Traffic Accidents  
Railway Employment  
Road Traffic  
Road Vehicle Fleet  
Railway Traffic  
Railway Vehicles  
Inland Waterway Traffic  
Inland Waterway Vessels  
Oil Pipeline Transport
- Forestry (FOREST EUROPE/UNECE/FAO)**  
Overview Tables  
Forest Resources  
Forest Health and Vitality  
Productive Functions  
Biological Diversity  
Protective Functions  
Socio-Economic Functions

- **Periodic Updates**

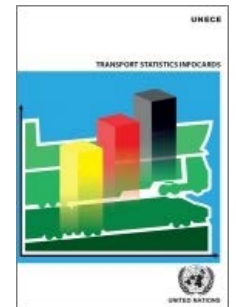
- **Inland Transport Statistics for Europe and North America**  
*(formerly Annual Bulletin for Transport Statistics)*



- **Statistics of Road Traffic Accidents in Europe and North America**



- **Transport Statistics Infocards**

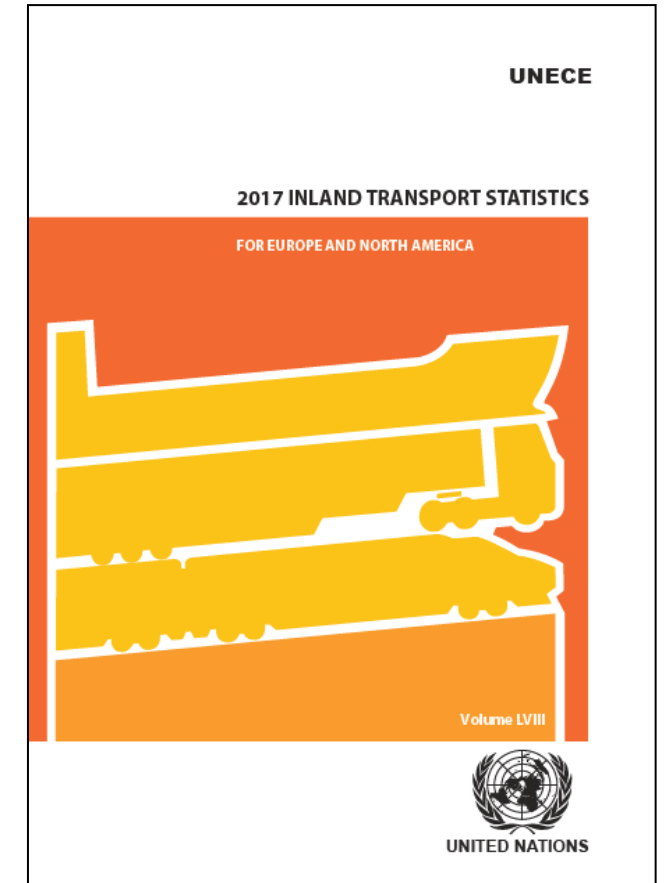


# Database updates

- **Data from WebCoQ (we will now try to update several times a year)**
- **Data from publication-specific questionnaires**
  - Sent to a UNECE member states not covered by Eurostat
- **Ad-hoc updates**
  - At request of countries
  - Part of ongoing data quality verification
- **Detail on structure discussed in presentation on changes to website data dissemination**

# Inland Transport Statistics for Europe and North America

- **Based on data as available on website**
  - Additional data request sent to non-Eurostat countries several months before each publication
  - Most recent three years of data
- **Published every two years (2013, 2015, 2017...)**
  - English version now available on website (???)
  - French and Russian translations soon available
- **Topics**
  - Road transport
  - Rail transport
  - Inland Waterways transport
  - Oil pipelines



# Inland Transport Statistics for Europe and North America



- **Road transport**

- Road infrastructure – Length of different road types
- Road vehicle fleet – by vehicle category, age group, fuel type, load capacity (for goods vehicles)
- New road vehicle registrations – by vehicle category, fuel type, load capacity (for goods vehicles)
- Road traffic – Vehicle-kms, passenger-kms by vehicle category, tonne-kms by type of transport (national, international, etc)
- Number of, load capacity and good carried by goods vehicles operated for hire or reward

- **Inland waterway transport**

- Navigable inland waterways – Length by type of waterway and carrying capacity of vessels
- Number, power and carrying capacity of vessels – by vessel type, carrying capacity category and year of construction
- Good carried and tonne-kms – by type of transport and type of vessel

- **Railway transport**

- Railway employment at principal railway enterprises
- Railway infrastructure – Length of lines by type of track, track gauge and nature of traffic
- Mobile equipment – Number and power of (wagons, locomotives, etc)
- Railway movements – Tractive vehicles, trains and hauled vehicles by type of locomotion
- Railway traffic – Number of passengers, passenger-kms, goods carried and tonne-kms by type of transport (national, international, etc)

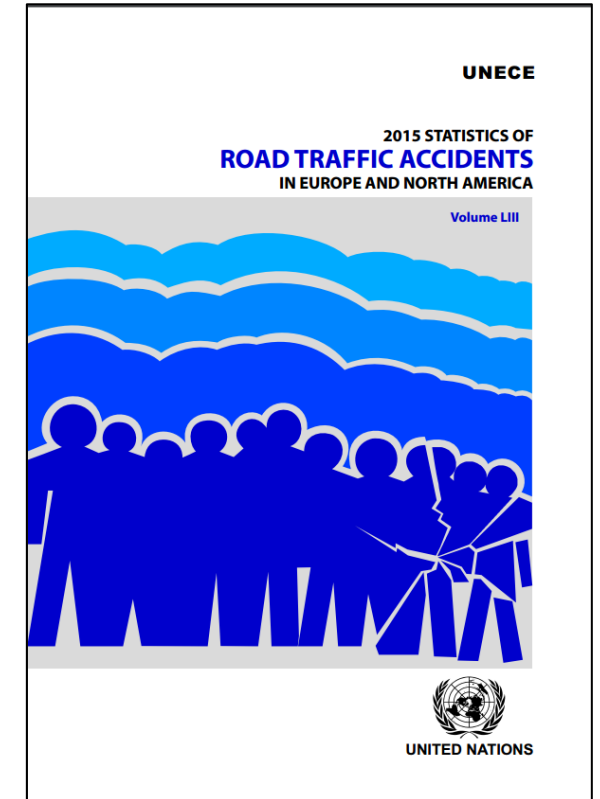
- **Oil pipelines**

- Oil pipeline infrastructure and volume of transport

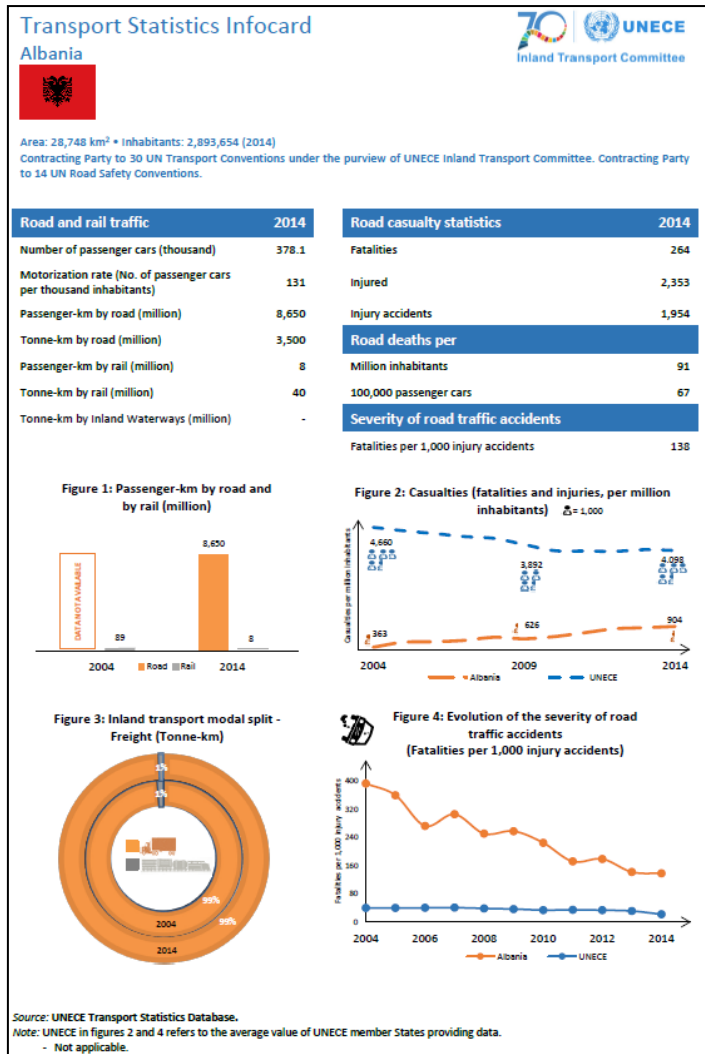


# Statistics of Road Traffic Accidents in Europe and North America

- **Based on data as available on website**
  - Additional data request sent to non-Eurostat countries mid-April
    - *9 responses received as of 7 June (of 21 sent)*
  - Most recent three years of data, with summary tables for ten years
- **Published every two years (2013, 2015, 2017...)**
  - English, French, Russian versions
  - Expected publication data – end of summer 2017
- **Topics**
  - Accidents, injuries and fatalities
    - by location, time of occurrence, road condition, nature of accident, category of user, age group
    - gender breakdown added to 2017 publication
  - Background statistics on road vehicle fleet, road vehicle-kms and population by age group
  - Further discussion on expanding published and collected data earlier in Work Session



# Transport Statistics Infocards



## • New initiative

- Summary data based on latest available data published annually in advance of Inland Transport Committee session
- Countries given opportunity to update data prior to publication
- Available in English, French, Russian

## • Structure

- Tonne-kilometres for road, rail and inland waterway transport
- Passenger-kilometres for road and rail transport
- Motorization rate
- Overall road safety data (including severity and rates per inhabitant and per passenger car)
- Figures compared against UNECE average where possible

<https://www.unece.org/trans/main/wp6/infocards.html>



**Suggestions?  
Comments?**

**Contact UNECE**  
*[stat.trans@unece.org](mailto:stat.trans@unece.org)*









**SAFE, CLEAN, SECURE AND EFFICIENT  
 MOBILITY FOR PEOPLE AND FREIGHT**

 Inclusive International Legal Architecture

 Effective Public Administration

 International Cooperation

 Innovative Financing

 New Technologies

 Social Responsibility

enablers

objectives

Seamless B / C

Facilitated international transport

Reduced GHG emissions

Reduced air / noise pollution

Increased P.T. Mobility Choices

Zero traffic fatalities and injuries

Efficient transport services

Enjoyable walking and cycling

*The future  
 Inland Transport  
 WE WANT!*

