

Consistency between the 1968 Convention on Road Traffic and other legal instruments
A Road Safety Forum (WP.1) roundtable
Salle VII, Palais des Nations, Geneva 19 March 2012



SENSIBILISER



PRÉVENIR



CORRIGER



PROTÉGER



SECOURIR

Docteur Jean-Yves Le Coz

Professeur des Universités

Expert Leader « Road safety » Renault Group

Corporate Social Responsibility



Passive safety

Consistency between the 1968 Convention on Road Traffic and other legal instruments A Road Safety Forum (WP.1) roundtable
Salle VII, Palais des Nations, Geneva 19 March 2012



**DECADE OF ACTION FOR
ROAD SAFETY 2011-2020**
SUPPORTED BY RENAULT



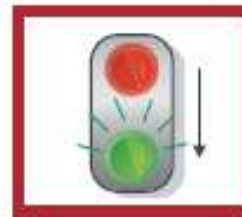
The *perceptive* mode consists of sensorial extension

The device informs the driver of the value of a variable, such as for example, speed indicated on the speedometer or a sensation of lateral acceleration. The driver is free to take the information into account or not and retains the power to decide whether to take action or not.

The *mutual control* mode: in this type of co-operation, the device takes over various control activities



Warning mode:
the device transmits a judgement on driver performance in the form of a warning.



Corrective mode:
the driver requests the device to control actions by correcting his actions if they result in exceeding a pre-defined risk level.



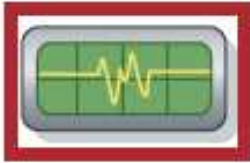
Limit mode:
the driver requests the device to control actions by limiting his own actions so they do not exceed a pre-defined level of risk.



Action suggestion mode:
it suggests an action to the driver:



The **delegation of function mode**: in this type of co-operation, the decision to take action is delegated to the device in more or less durable fashion.



Regulated mode: the driver explicitly requests the device to take the necessary decisions and then implement.



Prescriptive mode: At the initiative of the infrastructure, which forces the device to take the necessary decisions and implement.



Mediatized mode: the driver retains the initiative, but an action initiated by the driver must be amplified to avoid an accident. For example the driver begins braking, this is reinforced by the device.

Automatic mode: this is implemented when no driver action is possible to avoid an accident.



The device takes control



Visual & audible signal for belt wearing



Rain sensor



Light sensor



Rain and light



Consistency between the 1968 Convention on Road Traffic and other legal instruments A Road Safety Forum (WP.1) roundtable
Salle VII, Palais des Nations, Geneva 19 March 2012



**DECADE OF ACTION FOR
ROAD SAFETY 2011-2020**
SUPPORTED BY RENAULT

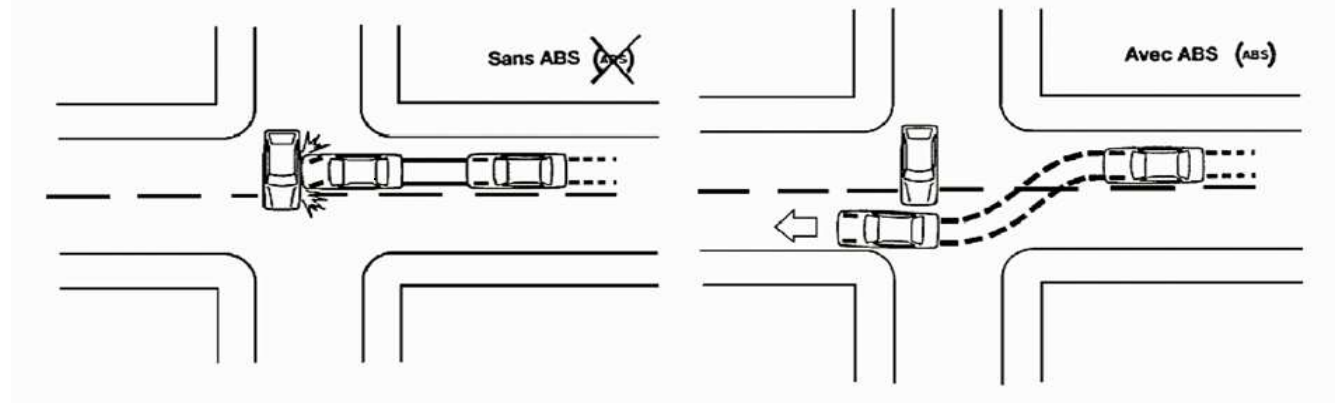
Consistency between the 1968 Convention on Road Traffic and other legal instruments A Road Safety Forum (WP.1) roundtable
Salle VII, Palais des Nations, Geneva 19 March 2012



**DECADE OF ACTION FOR
ROAD SAFETY 2011-2020**
SUPPORTED BY RENAULT



ABS



Emergency brake assist

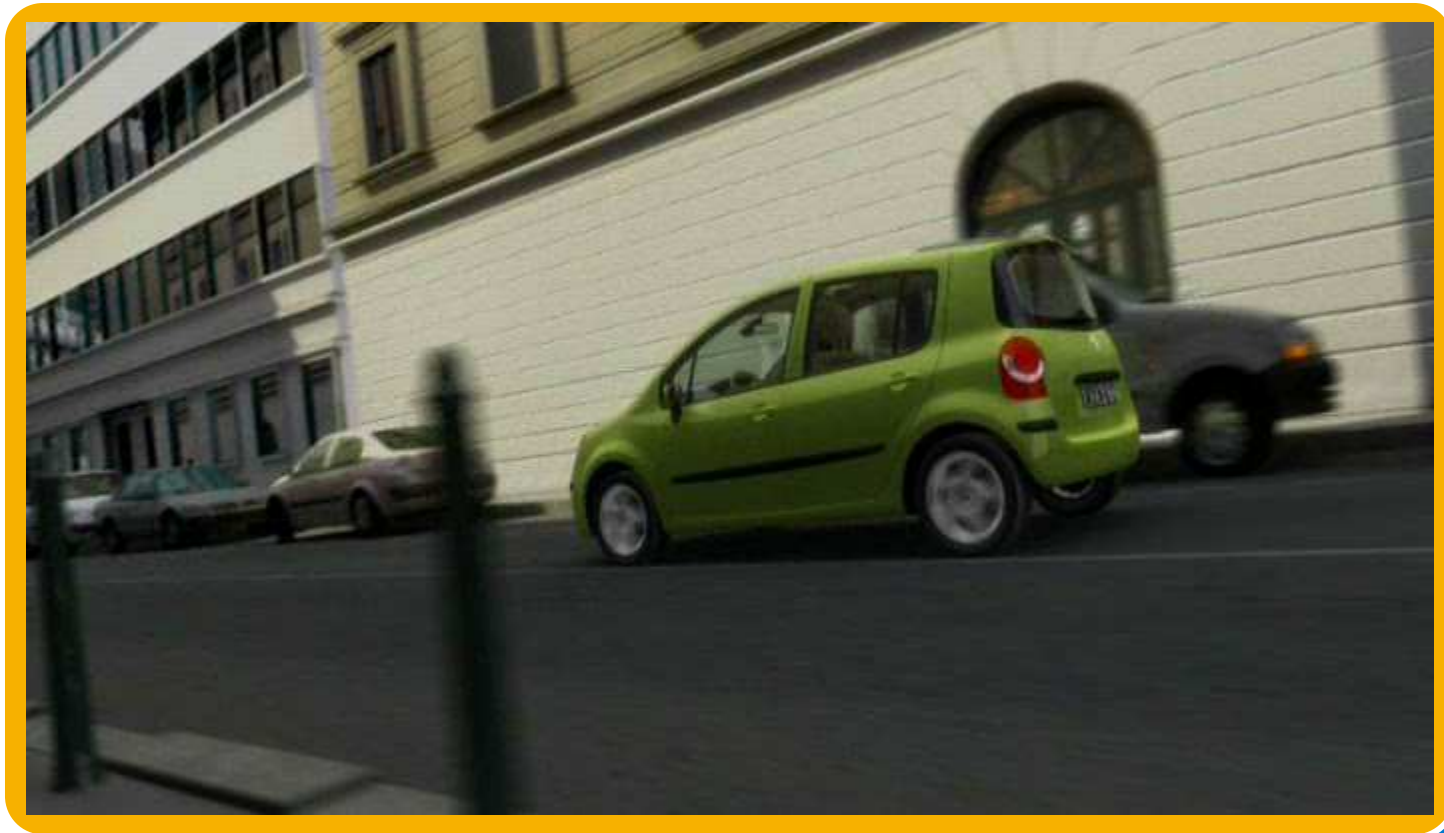


Consistency between the 1968 Convention on Road Traffic and other legal instruments A Road Safety Forum (WP.1) roundtable
Salle VII, Palais des Nations, Geneva 19 March 2012



**DECADE OF ACTION FOR
ROAD SAFETY 2011-2020**
SUPPORTED BY RENAULT

ESC



Consistency between the 1968 Convention on Road Traffic and other legal instruments A Road Safety Forum (WP.1) roundtable
Salle VII, Palais des Nations, Geneva 19 March 2012



**DECADE OF ACTION FOR
ROAD SAFETY 2011-2020**
SUPPORTED BY RENAULT