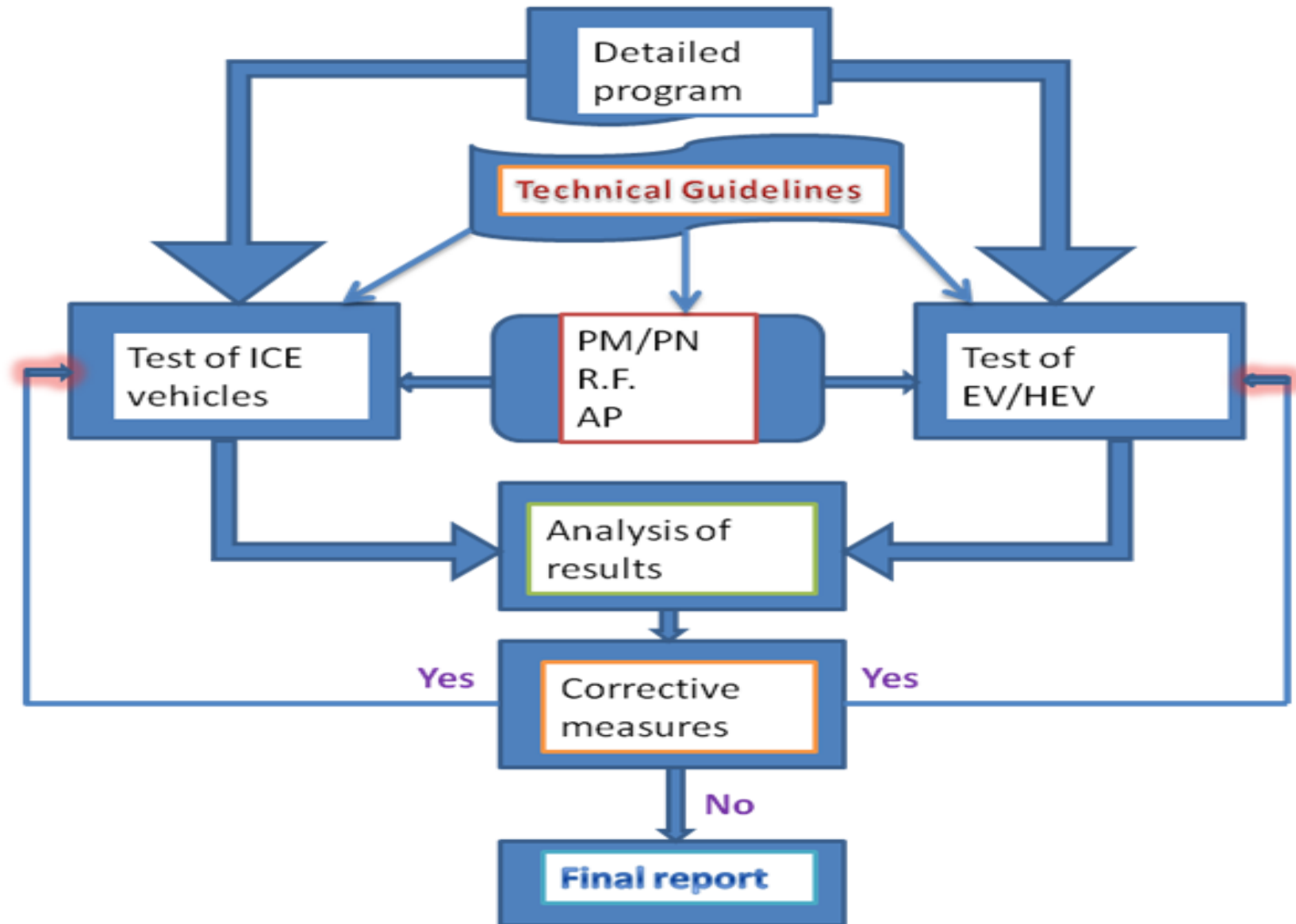


Update on the preparation of Validation Phase 2 (feasibility of the new test procedure with the WLTC)



Roles and responsibilities

- The preparation of the detailed plan of Validation Phase 2 is under the responsibility of the Validation Task Force (VTF).
- The preparation of the Technical Guidelines for the participating labs is under the responsibility of the DTP chairman, who will be supported by the DTP subgroups.
- The execution of the vehicle testing with the new test procedure (and new driving cycle) is under the responsibility of the participating labs.
 - VTF will provide a standardised format for input parameters and for data collection.
- The analysis of the test results and the assessment of the feasibility of the new test procedure will be carried out by the DTP subgroups and by DHC under the coordination of the VTF.
- The final assessment of the feasibility of the new test procedure (with the new driving cycle) will be carried out together by DTP and DHC working groups and will be revised by the WLTP steering committee and presented to GRPE for approval.

Validation Phase 2	June 2011	July	Aug.	Sept.	Oct.	Nov.	Dec.	Jan. 2012	Feb.	Mar.	Apr.
1. Detailed plan											
1.1 List of participating labs (VTF + Labs)											
1.2 Vehicles selection (Labs)											
1.3 Test matrix (VTF)											
1.4 Inform participating labs (VTF)											
1.5 Assessment criteria (DTP + DHC)											
2. Execution of the tests											
2.1 Technical guidelines (DTP)											
2.2 Execution of tests (Labs)											
2.3 Collection of results (Labs/JRC ftp server)											
3. Analysis of results											
3.1 Analysis of results (DTP + VTF)											
3.2 Corrective measures (VTF + DTP)											
3.3 Assessment of feasibility (DTP + DHC)											
3.4 Final report (VTF)											

Red color : ongoing actions

VTF - NEXT STEP

- **Collect the Parameter List from the DTP subgroups by the end of this week (16 September)**
- **Get a revised version of excel template for results submission (H. Steven)**
- **Propose a Test Sequence for Validation Phase 2 (Ichikawa-san/ Celine)**
- **Members of the VTF will contact the respective laboratories to discuss about the Parameter List , Test Sequence, excel template**
- **Feedback from these discussions will be communicated to DTP subgroups (and, if needed, DTP subgroup will be asked to integrate/clarify the Parameter List) before the end of September**
- **By end of September / beginning October, the draft Validation Phase 2 detailed plan and draft Technical Guidelines will be distributed to DTP/DHC members and to participating labs.**

VTF - NEXT STEP (less urgent)

- **Test matrix**
- **Vehicle selection**
- **Assessment criteria**