



The project is funded by  
The European Union



# SEED+

Edna KARADZA, SEED+ Project Manager  
CEFTA Secretariat

Systematic Electronic Exchange of Data



**CEFTA**  
Central European Free Trade Agreement  
SECRETARIAT

Implemented by





The project is funded by  
The European Union



# SEED



The project is funded by  
The European Union

Implemented by



**CEFTA**  
Central European Free Trade Agreement  
SECRETARIAT



# SEED+



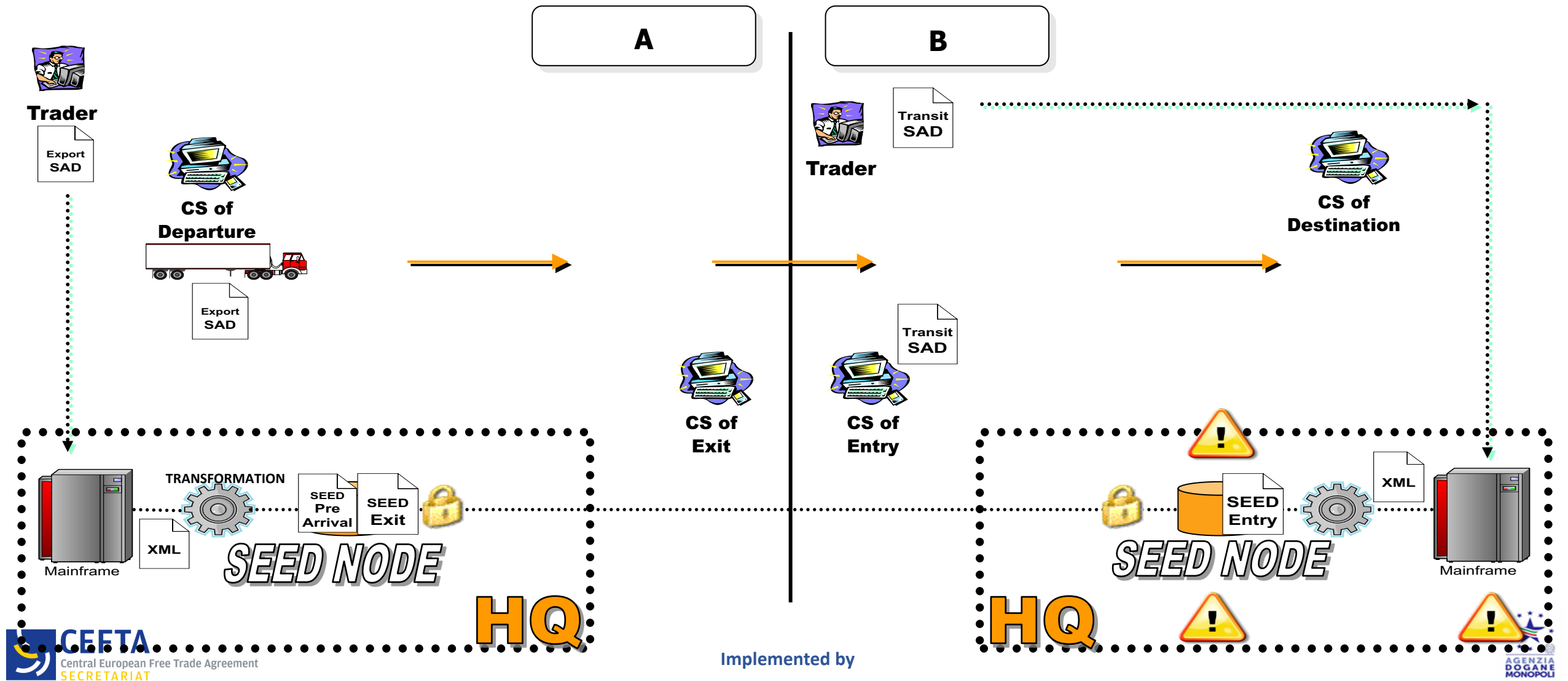
**CEFTA**  
Central European Free Trade Agreement  
SECRETARIAT

Implemented by





# HOW DOES SEED WORK?

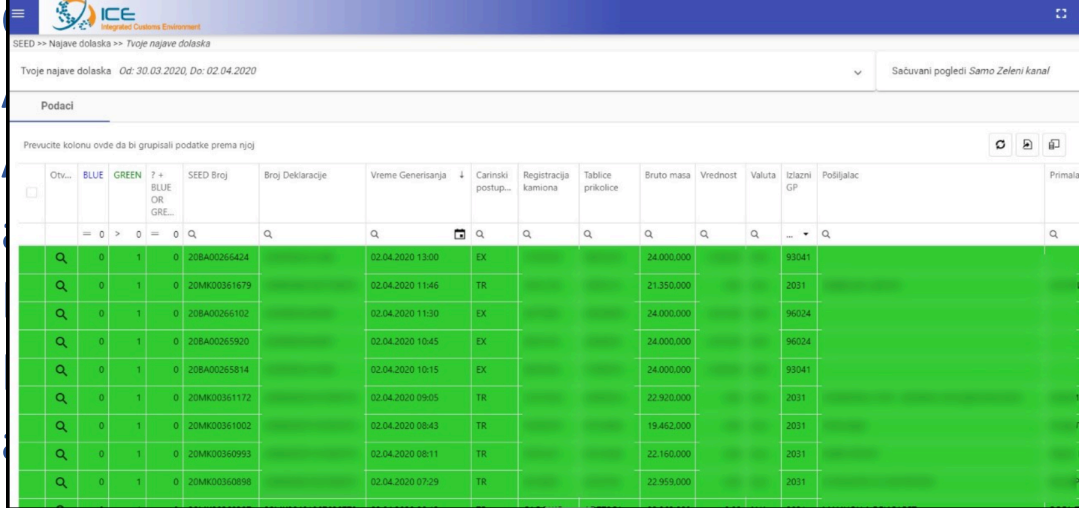


## SEED DATA MODELS USED

- SEED messages for Transit Declarations: data model created on basis\* of NCTS IE001 (New Computerised Transit System) and WCO DM (Data Model) v3;
- SEED messages for Export Declarations: data model created on basis\* of ECS IE501 (Export Control System) and WCO DM v3;
- SEED message for Import Declarations: data model created on basis\* of ICS IE729 (Import Control System) and WCO DM v3) – this message is used only for data matching, and is not transmitted to the neighbouring party;
- SEED messages for TIR carnets: data model created on UNECE (United Nations Economic Committee for Europe) eTIR data model;
- SEED messages for ATA carnets;
- SEED messages for Simplified Procedure accompanied document (Invoice);
- SEED message for border crossings of the Empty Trucks;

\* Respectable data models were adjusted for the business objectives of the Project

## SEED+ Covid19 response:

- 
- ICE  
Integrated Customs Environment
- SEED >> Najave dolaska >> Tvoje najave dolaska
- Tvoje najave dolaska Od: 30.03.2020, Do: 02.04.2020
- Sećuvani pogledi Samo Zeleni kanal
- Podaci
- Prevucite kolonu ovde da bi grupisali podatke prema njoj
- | Otv... | BLUE | GREEN | 7 + BLUE OR GRE... | SEED Broj    | Broj Deklaracije | Vreme Generisanja | Carinski postup... | Registracija kamiona | Tablice prikolicе | Bruto masa | Vrednost | Valuta | Iznazni GP | Posiljalac | Primatelj |
|--------|------|-------|--------------------|--------------|------------------|-------------------|--------------------|----------------------|-------------------|------------|----------|--------|------------|------------|-----------|
| Q      | 0    | 1     | 0                  | 20BA00266424 |                  | 02.04.2020 13:00  | EX                 |                      |                   | 24.000,000 |          |        | 93041      |            |           |
| Q      | 0    | 1     | 0                  | 20MK00361679 |                  | 02.04.2020 11:46  | TR                 |                      |                   | 21.350,000 |          |        | 2031       |            |           |
| Q      | 0    | 1     | 0                  | 20BA00766102 |                  | 02.04.2020 11:30  | EX                 |                      |                   | 24.000,000 |          |        | 96024      |            |           |
| Q      | 0    | 1     | 0                  | 20BA00265920 |                  | 02.04.2020 10:45  | EX                 |                      |                   | 24.000,000 |          |        | 96024      |            |           |
| Q      | 0    | 1     | 0                  | 20BA00265814 |                  | 02.04.2020 10:15  | EX                 |                      |                   | 24.000,000 |          |        | 93041      |            |           |
| Q      | 0    | 1     | 0                  | 20MK00361172 |                  | 02.04.2020 09:05  | TR                 |                      |                   | 22.920,000 |          |        | 2031       |            |           |
| Q      | 0    | 1     | 0                  | 20MK00361002 |                  | 02.04.2020 08:43  | TR                 |                      |                   | 19.462,000 |          |        | 2031       |            |           |
| Q      | 0    | 1     | 0                  | 20MK00360993 |                  | 02.04.2020 08:11  | TR                 |                      |                   | 22.160,000 |          |        | 2031       |            |           |
| Q      | 0    | 1     | 0                  | 20MK00360898 |                  | 02.04.2020 07:29  | TR                 |                      |                   | 22.959,000 |          |        | 2031       |            |           |
- Highlighted pre-arrival notifications for pri
  - for customs
  - Data set for announcing consignments to n
  - goods agreed
  - Pre-arrival notification, containing agreed
  - essential goods implemented for phytosar
  - CEFTA Secretariat is publishing weekly on its we

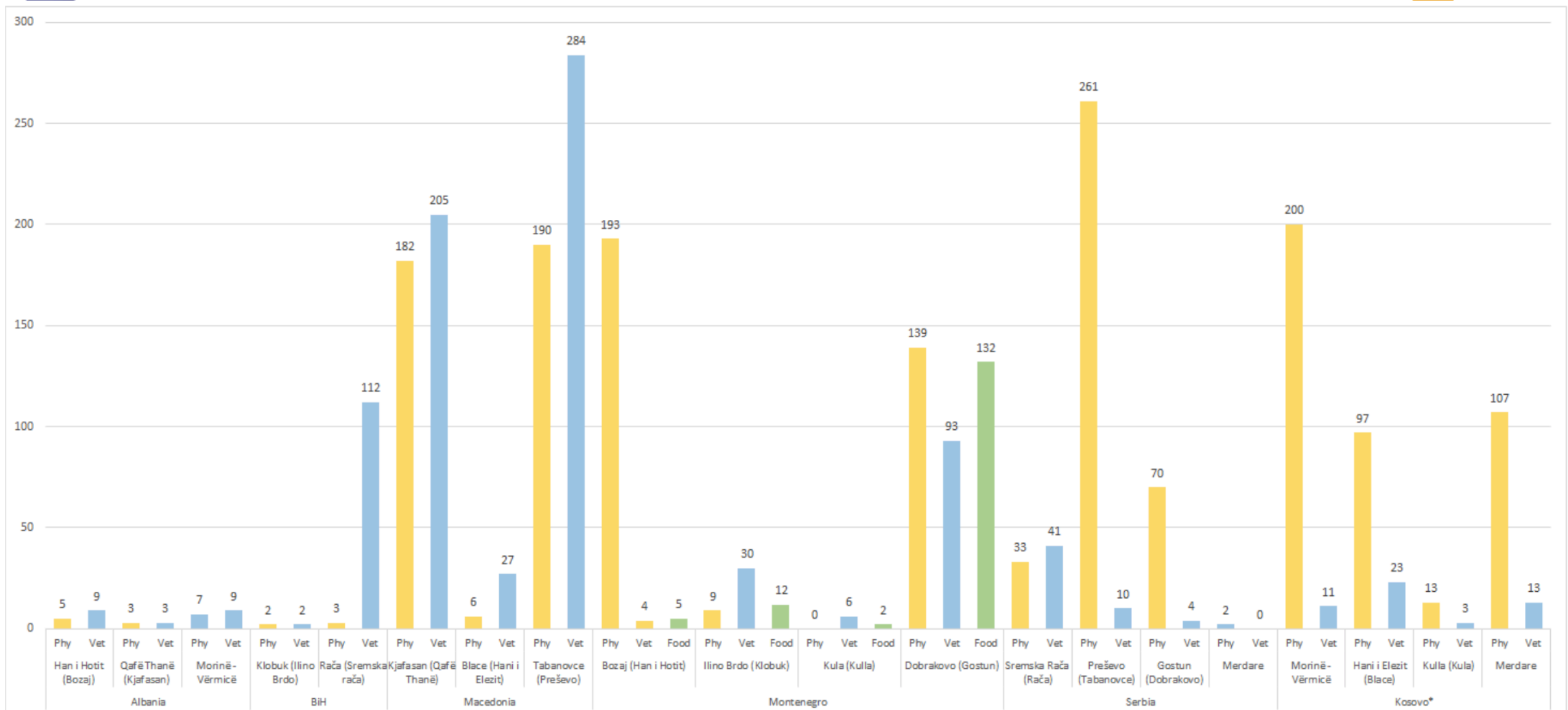
- points (BCP/CCPs) on TEN - T network;
- available 24/7;

priority passage at the green lanes has been

has been established through the System of  
of first necessity between customs administrations

Notification about announced consignment of goods from the priority list 4/16/2020 11:28:00 AM	
Message Type:	PREARRIVAL EXPORT
SEED Message ID:	20MK00418495
Date/Time of document generation	4/16/2020 11:22:27 AM
Description:	Vehicle with registration plates <b>GE3502AB\GE4098AB</b> is at <b>DEPARTURE</b> from Customs Office <b>4050 MK</b> and is directed to Customs Office <b>15172 RS</b> ->(2031-MK)
Goods details	
Gross mass	20761,000 (KG)
<b>1. Commodity Code</b>	<b>0808108000</b>
	ЈАБОЛКА АЈДАРЕД





\* This designation is without prejudice to positions on status, and is in line with UNSCR 1244/1999 and the ICJ Opinion on the Kosovo declaration of independence.



The project is funded by  
The European Union



swift implementation  
common goal teleworking  
digital transformation

speedy decision making interoperability

zoom various agency

digital platform

data exchange msteams

webex collaboration

innovation day



**CEFTA**  
Central European Free Trade Agreement  
SECRETARIAT

Implemented by



# Additional Protocol 5 regulatory framework

---

## ADDITIONAL PROTOCOL 5

### TO THE AGREEMENT ON AMENDMENT OF AND ACCESSION TO THE CENTRAL EUROPEAN FREE TRADE AGREEMENT

#### Article 2

#### Scope

2.1. Without prejudice to special provisions in force under legal acts concluded between CEFTA Parties, this Protocol shall apply to **the simplification of inspections, reduction of formalities** to the possible maximum extent, exchange of data concerning the carriage of goods between CEFTA Parties and cooperation of trade partnership programmes.

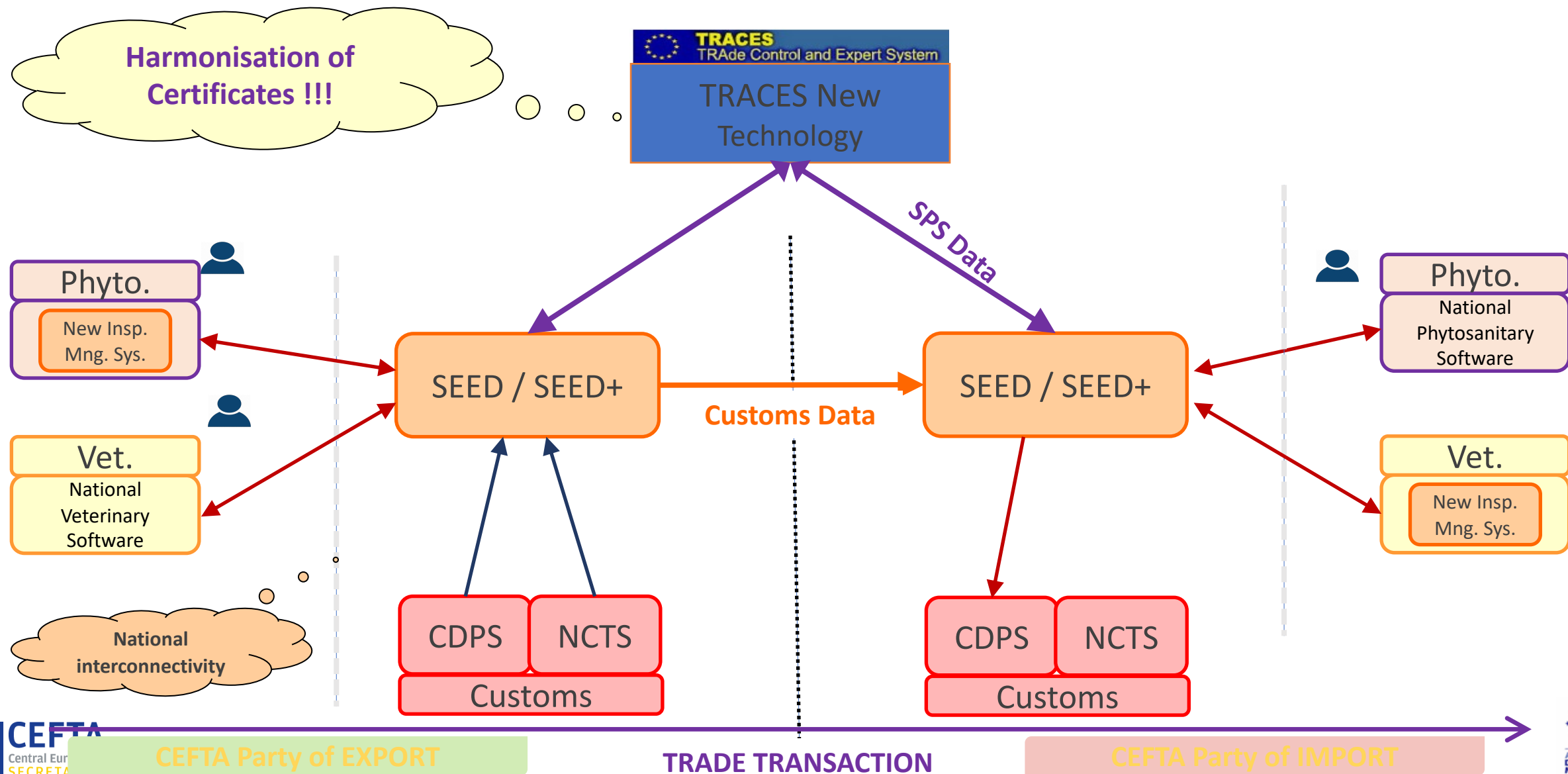




## AP5 – Annex I - electronic exchange of data

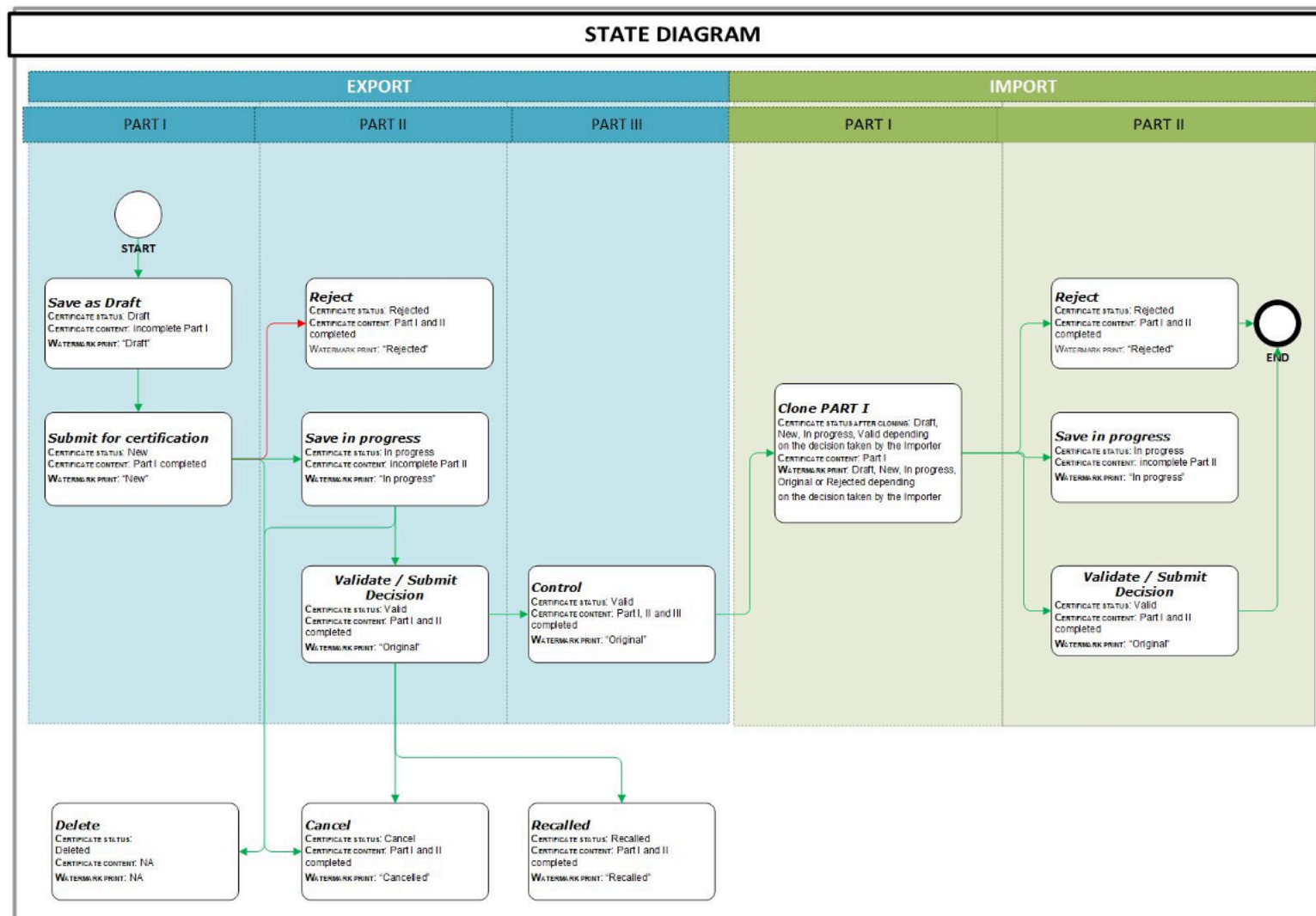
Document Type	Authority	Standard / Model used
<b>Veterinary Health Certificate for products of animal origin</b> <b>Veterinary Health Certificate for live animals</b>	<b>Veterinary authority/ National Food Authority /Ministry of Agriculture</b>	European Union – Veterinary Certificate to EU
<b>Phytosanitary Certificate for Export</b> <b>Phytosanitary Certificate for Re-Export</b>	<b>Phytosanitary /Agricultural / Agricultural Authority / National Food Authority / Ministry of Agriculture</b>	International Plant Protection Convention – ISPM 12 ANNEX 1 Model Phyto- sanitary Certificate for export
<b>Certificate of a Pharmaceutical Product</b> <b>Export permit for groups of medicines containing controlled substance</b>	<b>Agency for Medicines /Ministry of Health</b>	World Health Organisation (WHO) - Model certificate of a pharmaceutical product

# CEFTA TRACES NT VISION





# CERTIFICATES LIFE CYCLE





# AP5 – Annex I – Common Databases and Central Services

<b>Database of mutually recognized CEFTA AEOs</b>	
<b>Database of unsafe / noncompliant products detected on the CEFTA market</b>	
<b>Regional database of issued licenses</b>	

# Additional Protocol 5 regulatory framework

---

## ADDITIONAL PROTOCOL 5

### TO THE AGREEMENT ON AMENDMENT OF AND ACCESSION TO THE CENTRAL EUROPEAN FREE TRADE AGREEMENT

#### Article 5

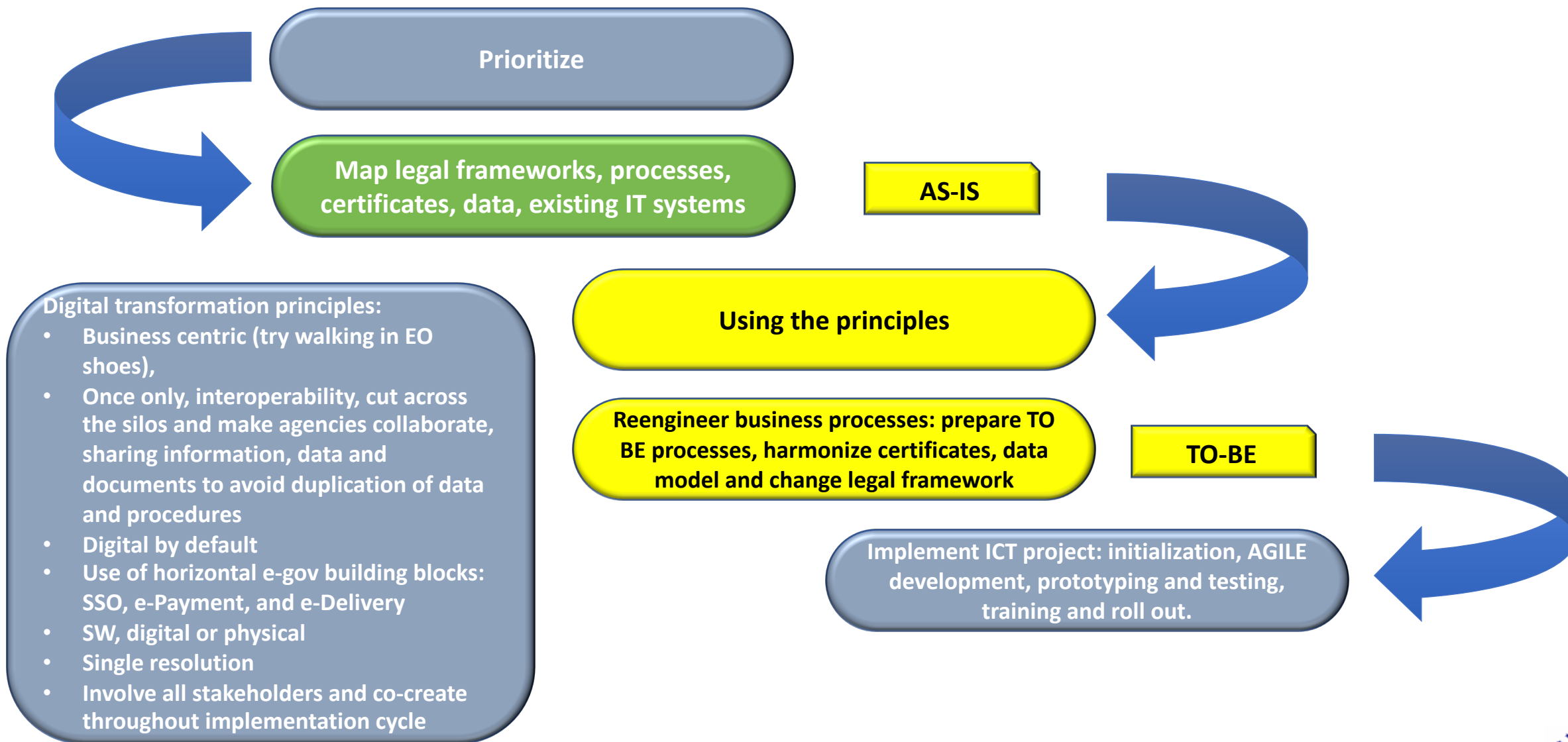
#### Risk Management

5.1. CEFTA Parties shall exchange data by means of electronic instruments with the aim of:

- a) strengthening and improving the quality of their risk analysis and the effectiveness of security-related controls;
- b) establishing a common framework for risk management, common risk criteria and common priority control areas for CEFTA at the regional level; and
- c) setting up an electronic system to implement joint risk-management among CEFTA Parties.



# Methodology







# Thank you!