



EU Hub for Exchange of CITES Permits

Endre Nagy – Consultant Analyst – DG-ENVIRONMENT – European Commission

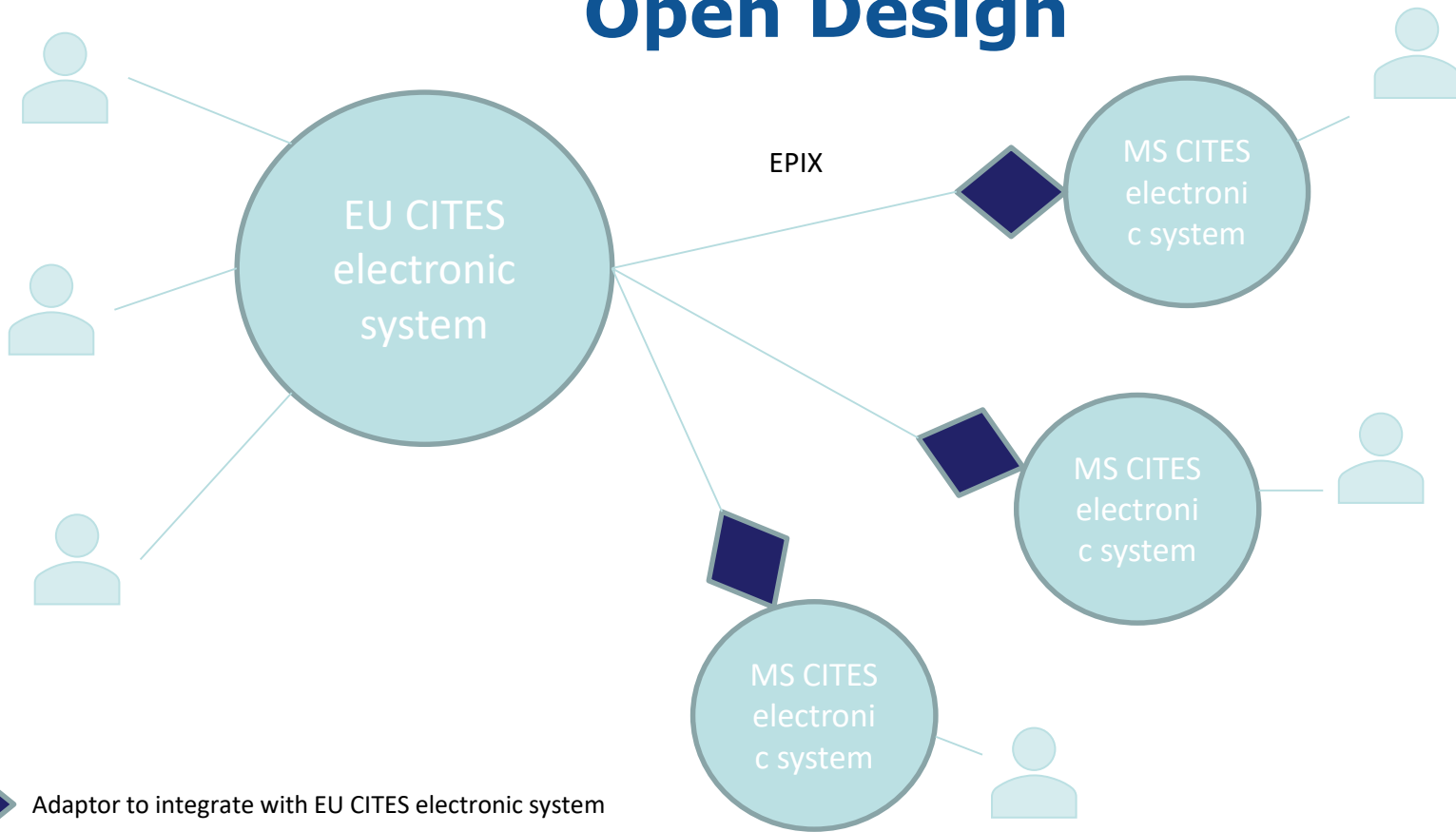
Virtual Consultative Workshop – EPIX for UNECE and ESCAP

8th & 9th April 2020

EU CITES Automation Feasibility Study

- **EC - DG Environment contracted a consultant to conduct Feasibility Study for an EU Wide Automated System for CITES Certificates & Permits**
- **Scope of Study**
 - Report on the current 'As-Is' within the MS's
 - Analyse Business Requirements and produce a Business Case
 - Analyse Technical Requirements and produce an Architecture Overview
- **Assessment made of 4 alternative high level Architectures**
- **Presented to Experts Group of the EU Member State Cites Authorities**
- **The "Open Design" was selected**

Open Design



High Level Analysis

➤ **Choreography**

- Description of the cooperation between the systems of the involved parties, based on a selected architecture

➤ **Objectives**

- Support Full Digital process
- Accommodate with paper until complete Digitalization
- Involved all parties
- Only-Once Principle

➤ **Parties**

- MAs in EU
- MAs outside EU
- Operators
- Customs

Strategy

➤ **EPIX compliance**

- Identify EPIX corresponding concepts
- Add specific needs

➤ **HUB communication**

- All parties communicate only with the Hub (operated by EC)
- Point2Point still possible but not recommended

➤ **Poll mechanism**

- To send a message: push to Hub
- To get a message: poll the Hub and retrieve your messages
(the Hub pushes no message)
- Polling Frequency

➤ **Security**

- Level of Availability, Confidentiality and Integrity for the Hub

Choreographed Scenario

➤ **Chosen business scenario**

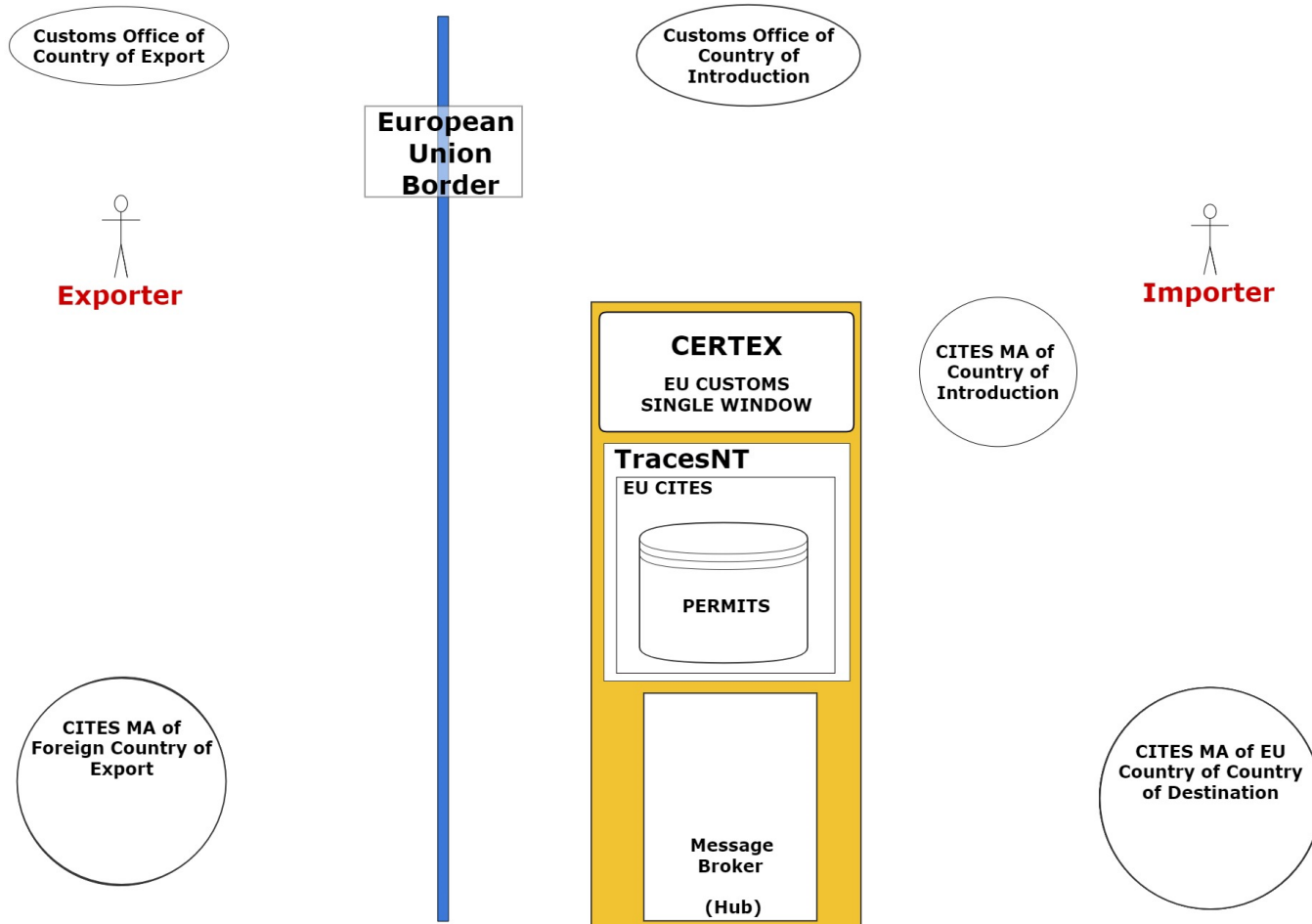
- Introduction to the EU of species under Annex A(II) & B
- MA of introduction different than MA of destination

➤ **Choreography scenarios**

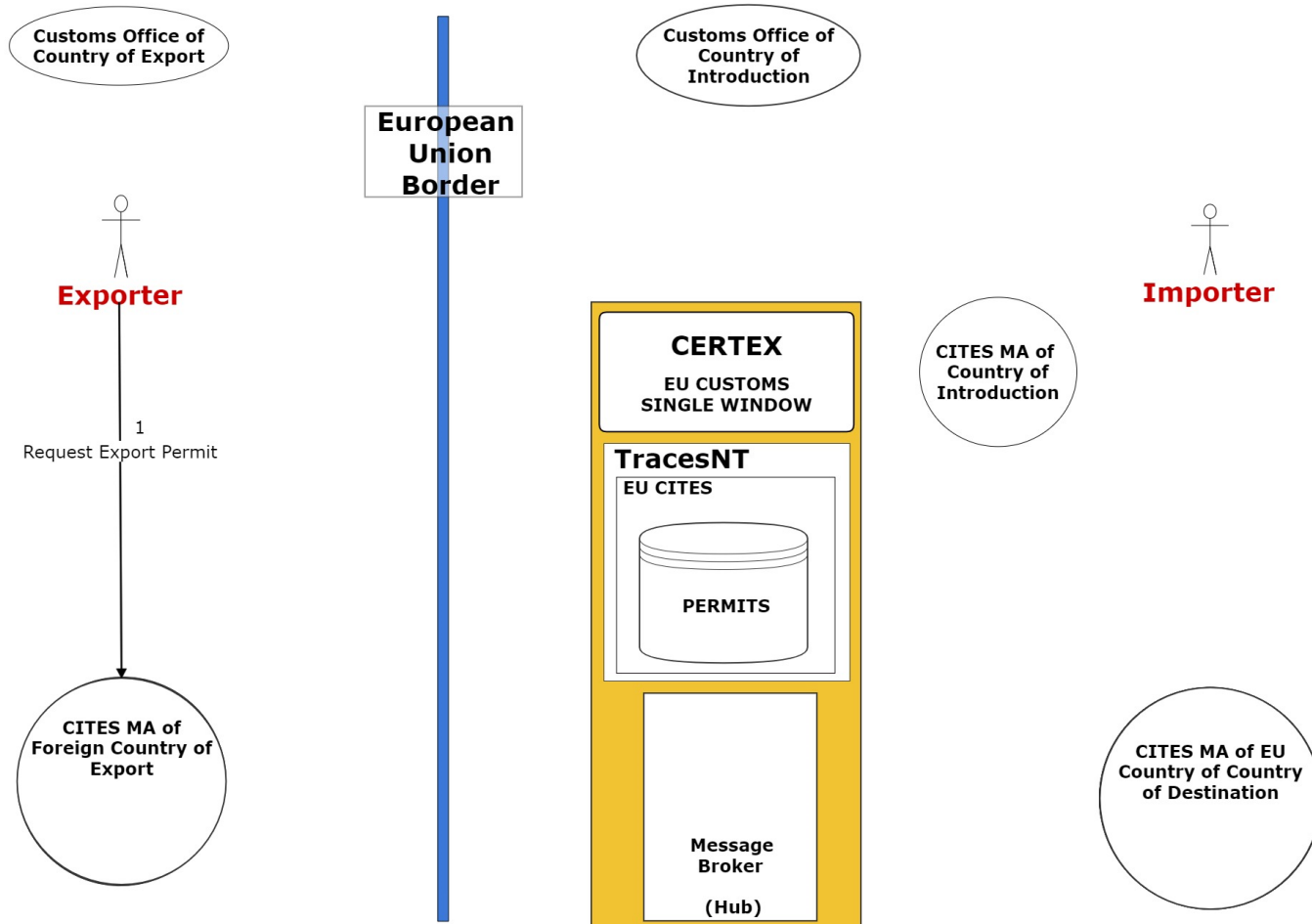
- Full electronic
- Paper Permit with QR code
- Paper Permit
- MA inside TRACES NT

➤ **Only the Happy Flow is presented**

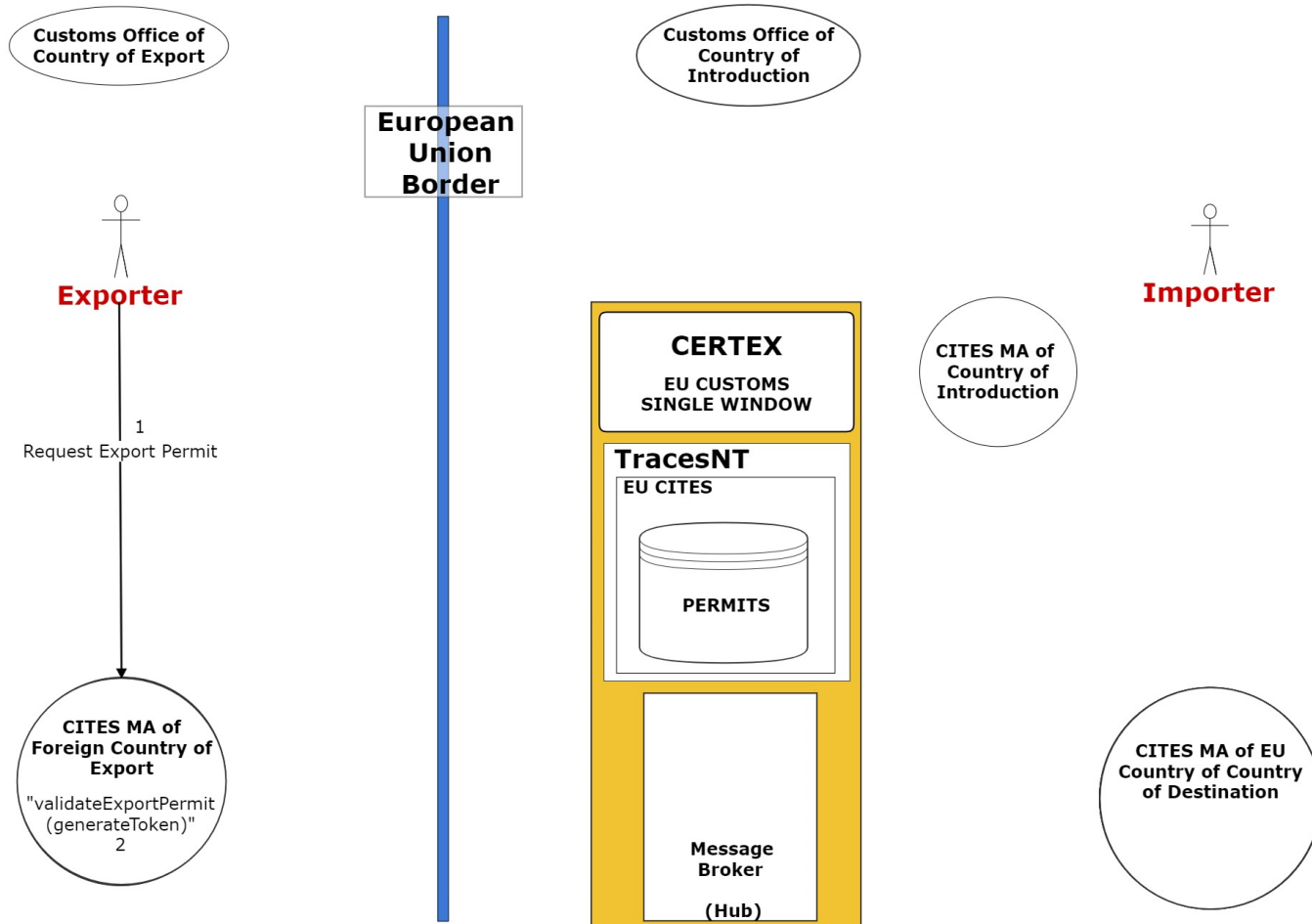
Customs Connected via CERTEX -
Exporting MA has fully Connected Automated System



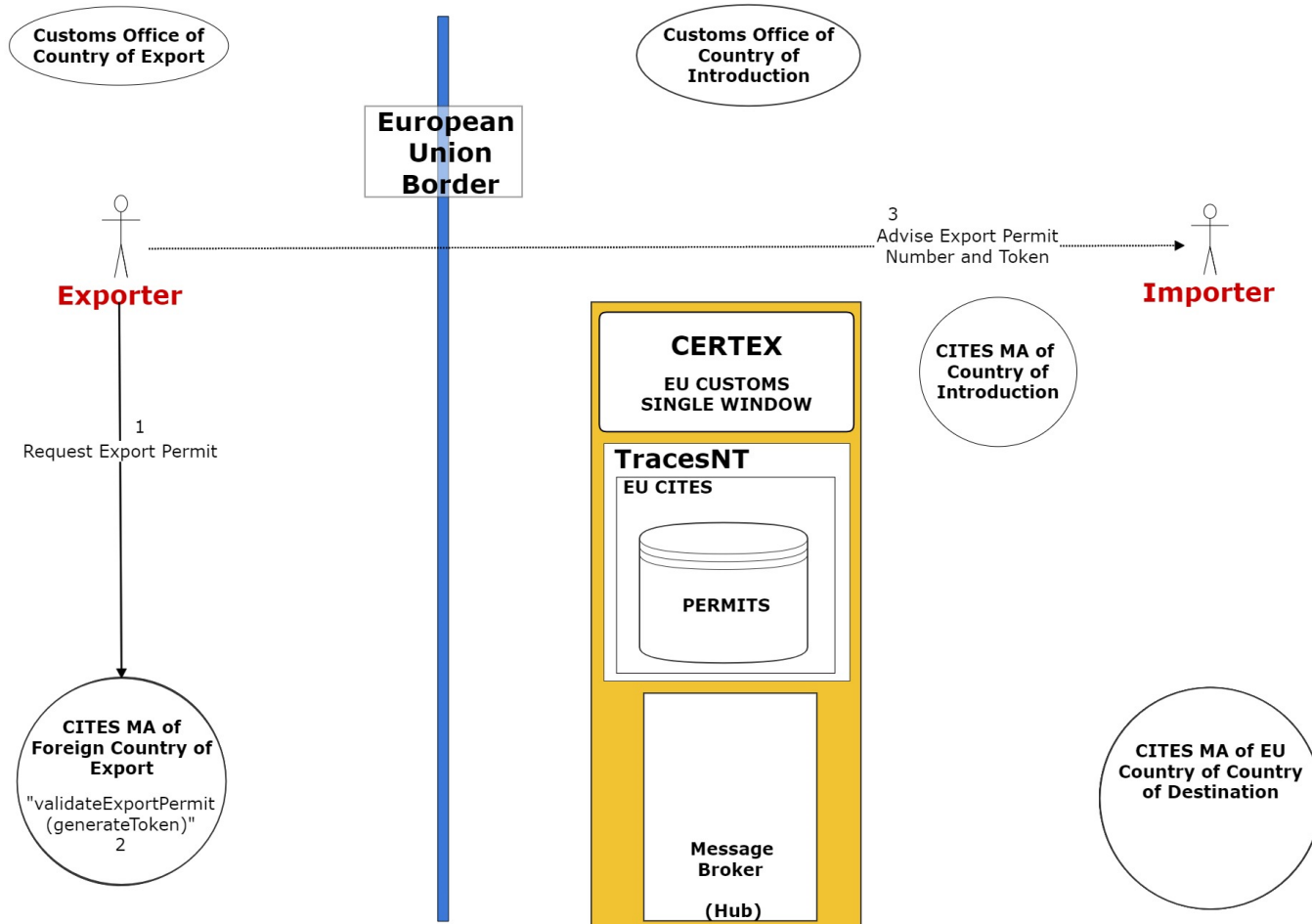
Customs Connected via CERTEX -
Exporting MA has fully Connected Automated System



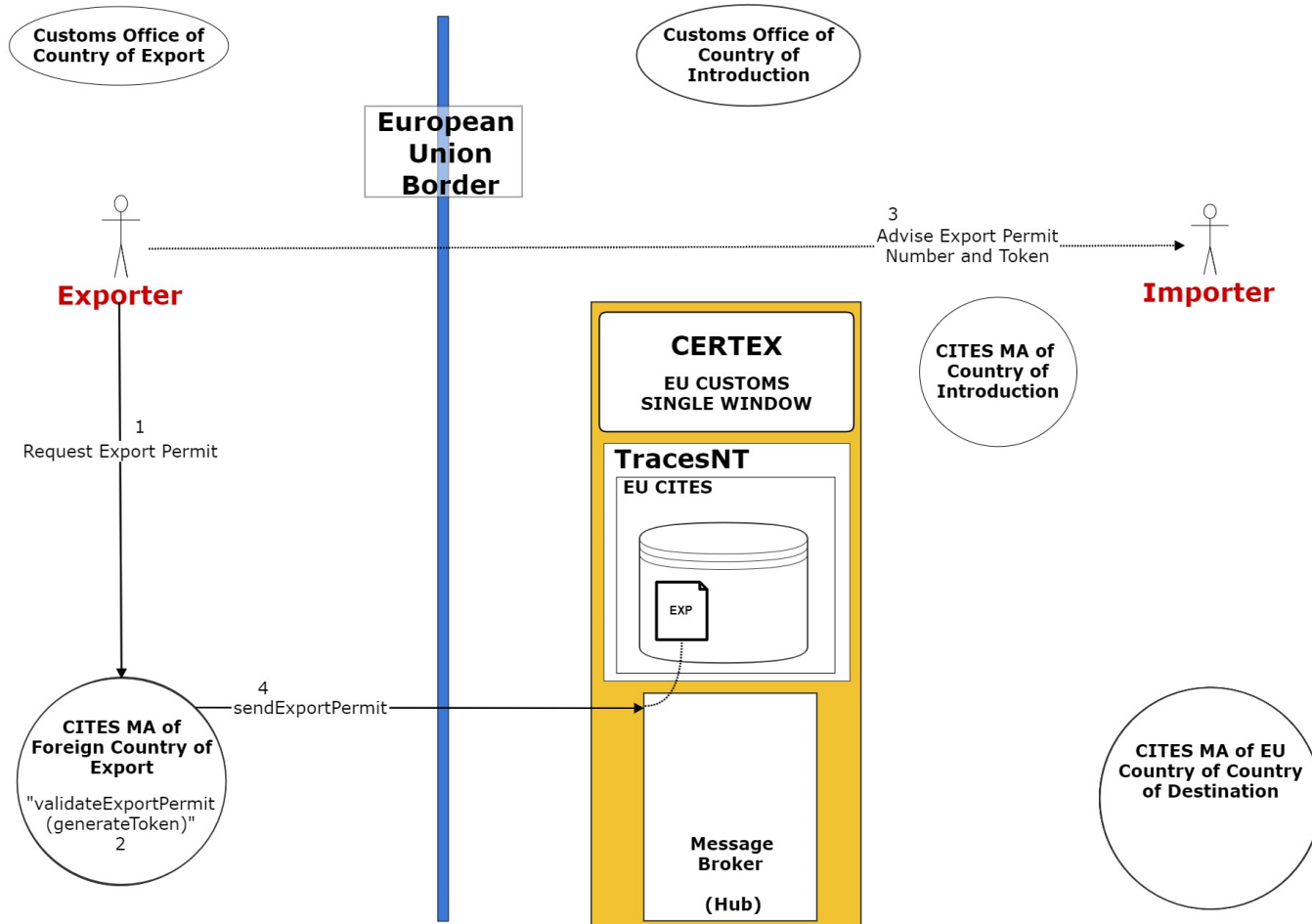
Customs Connected via CERTEX -
Exporting MA has fully Connected Automated System



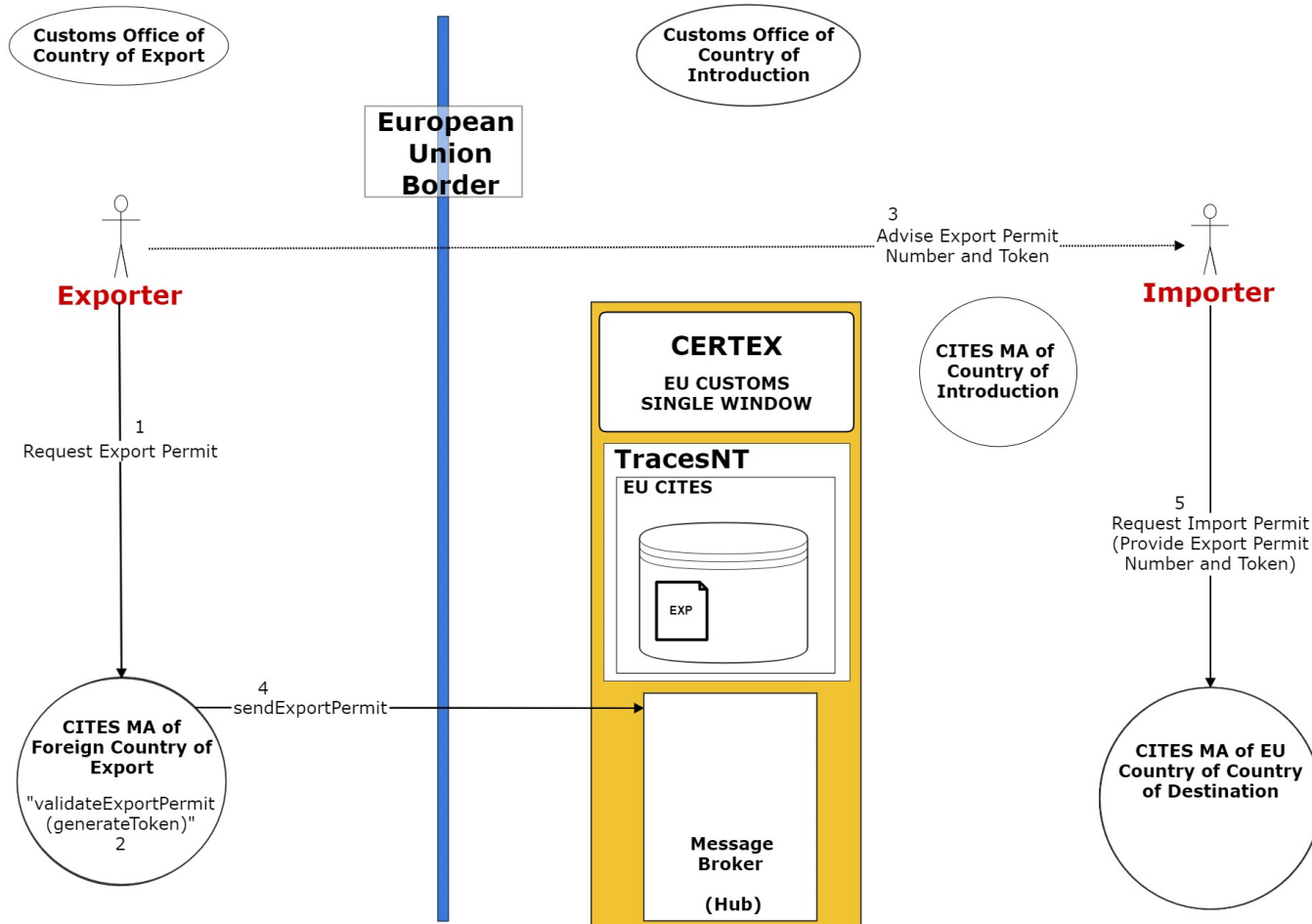
Customs Connected via CERTEX -
Exporting MA has fully Connected Automated System



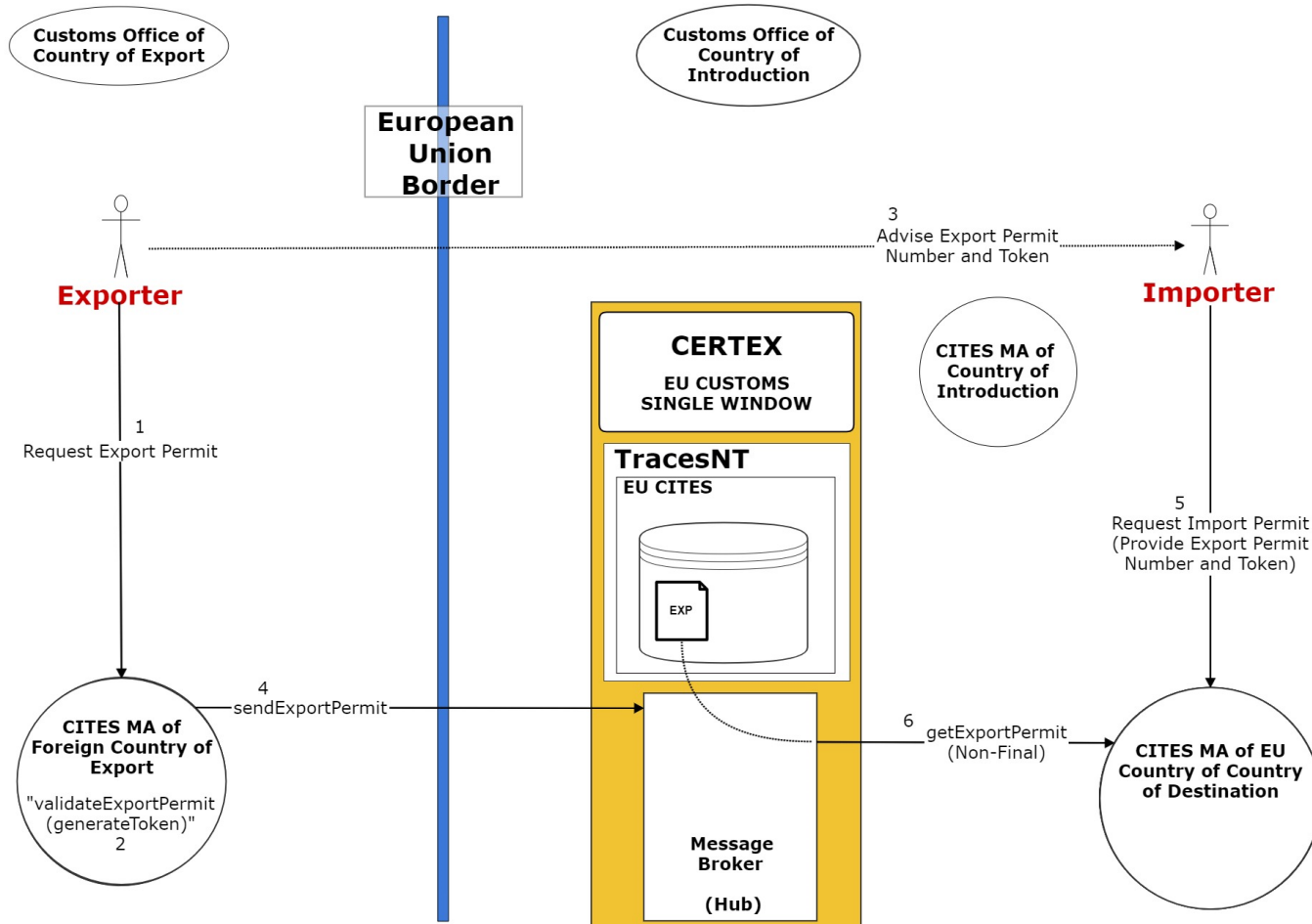
Customs Connected via CERTEX -
Exporting MA has fully Connected Automated System



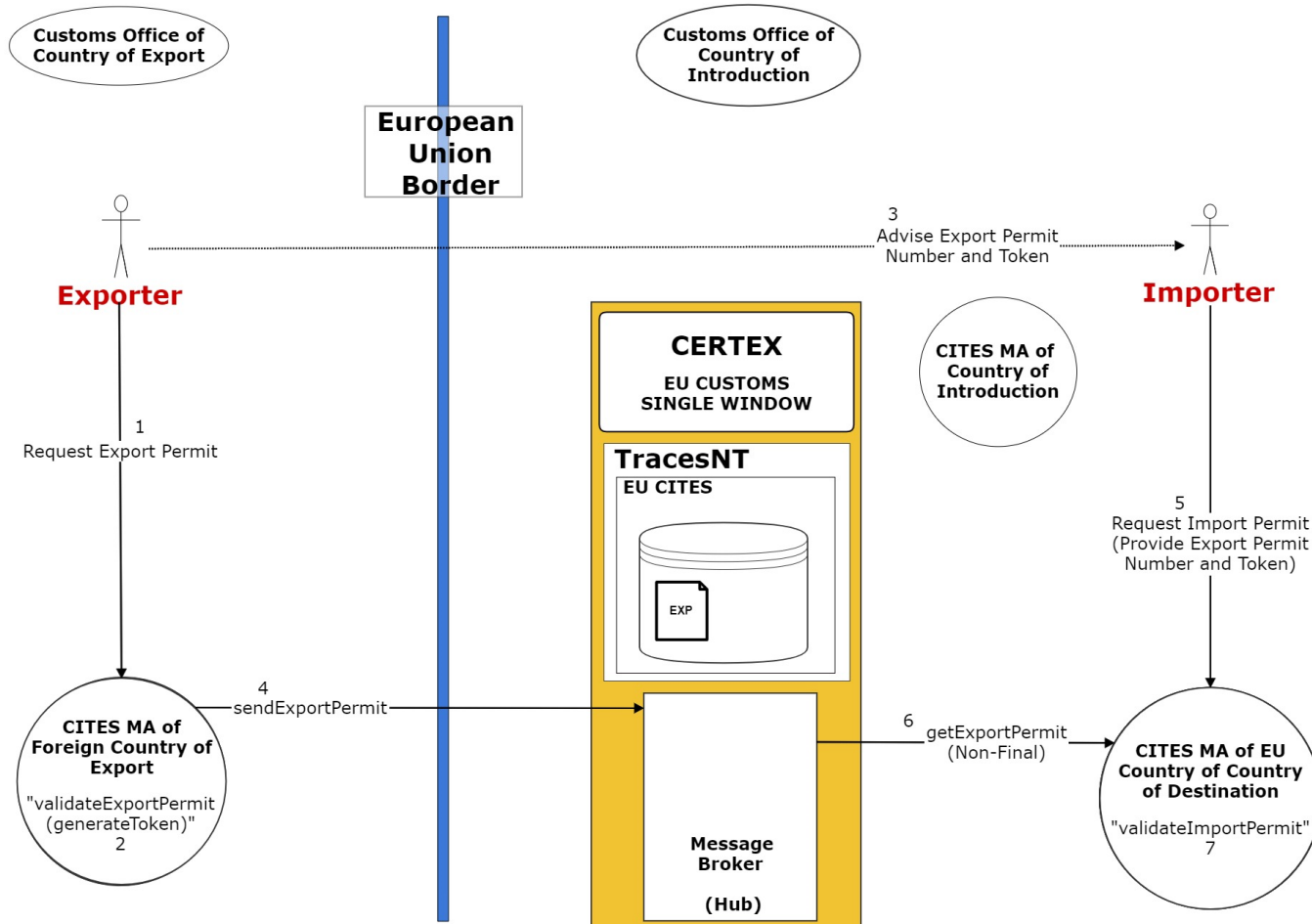
Customs Connected via CERTEX -
Exporting MA has fully Connected Automated System



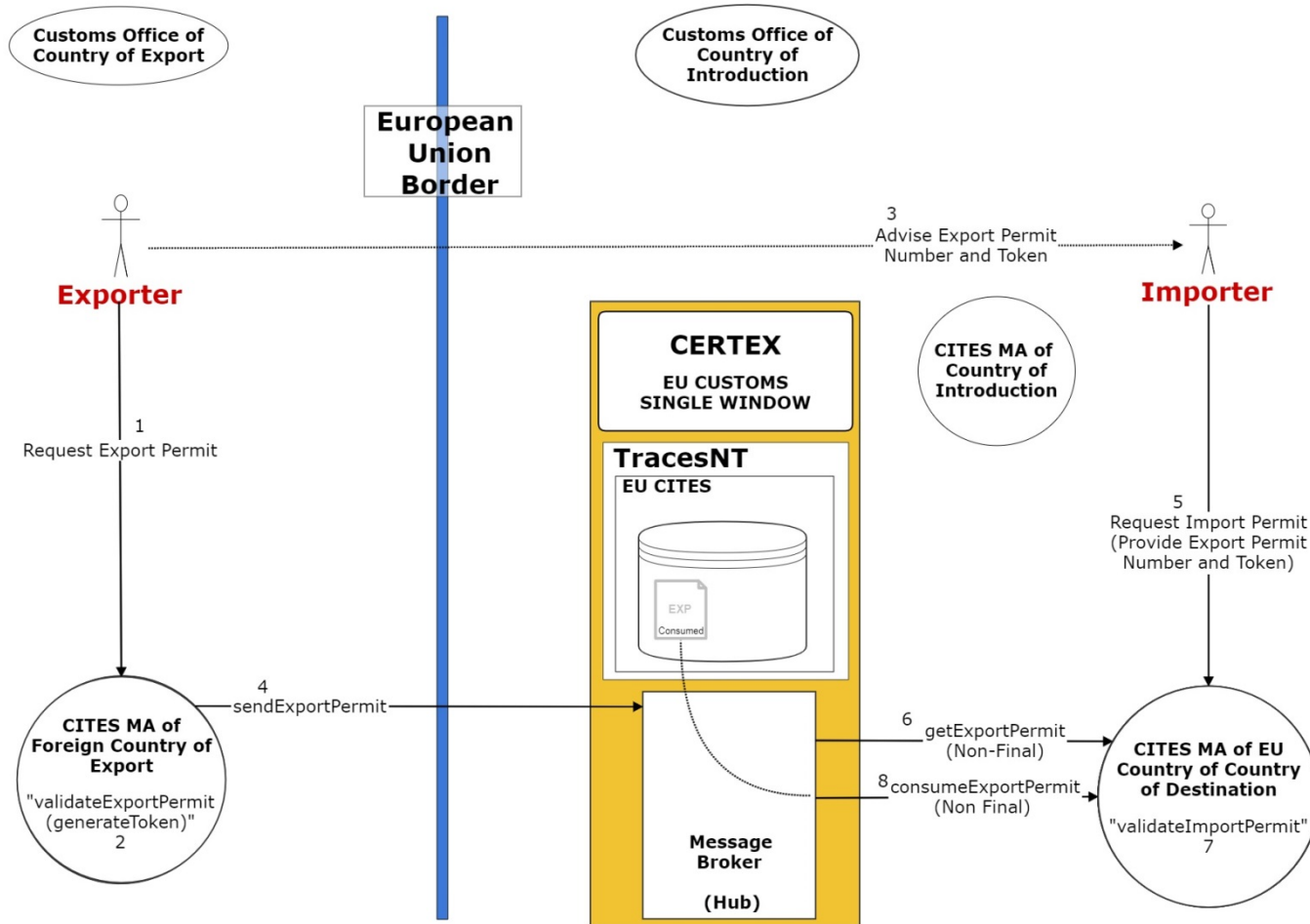
Customs Connected via CERTEX -
Exporting MA has fully Connected Automated System



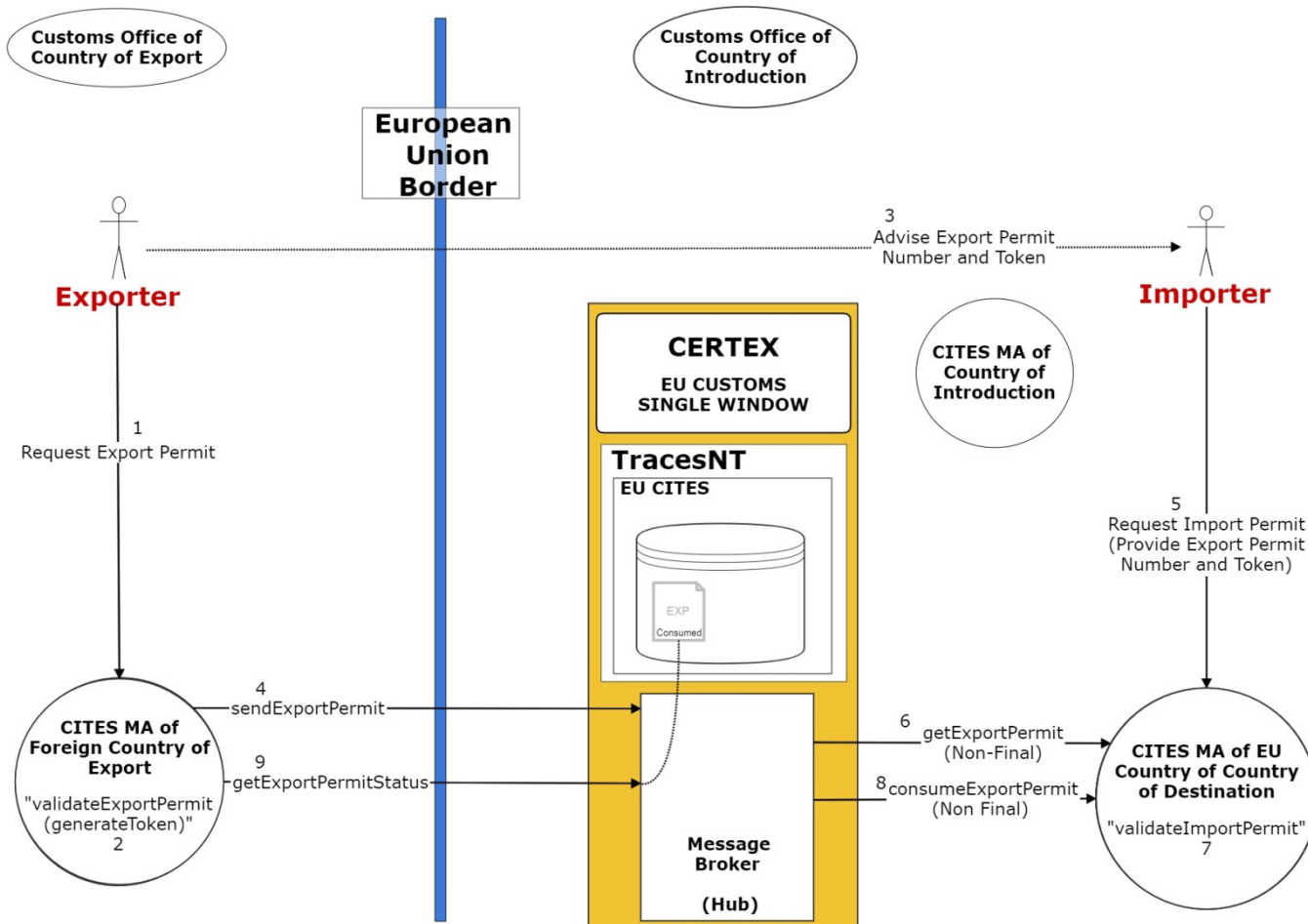
Customs Connected via CERTEX -
Exporting MA has fully Connected Automated System



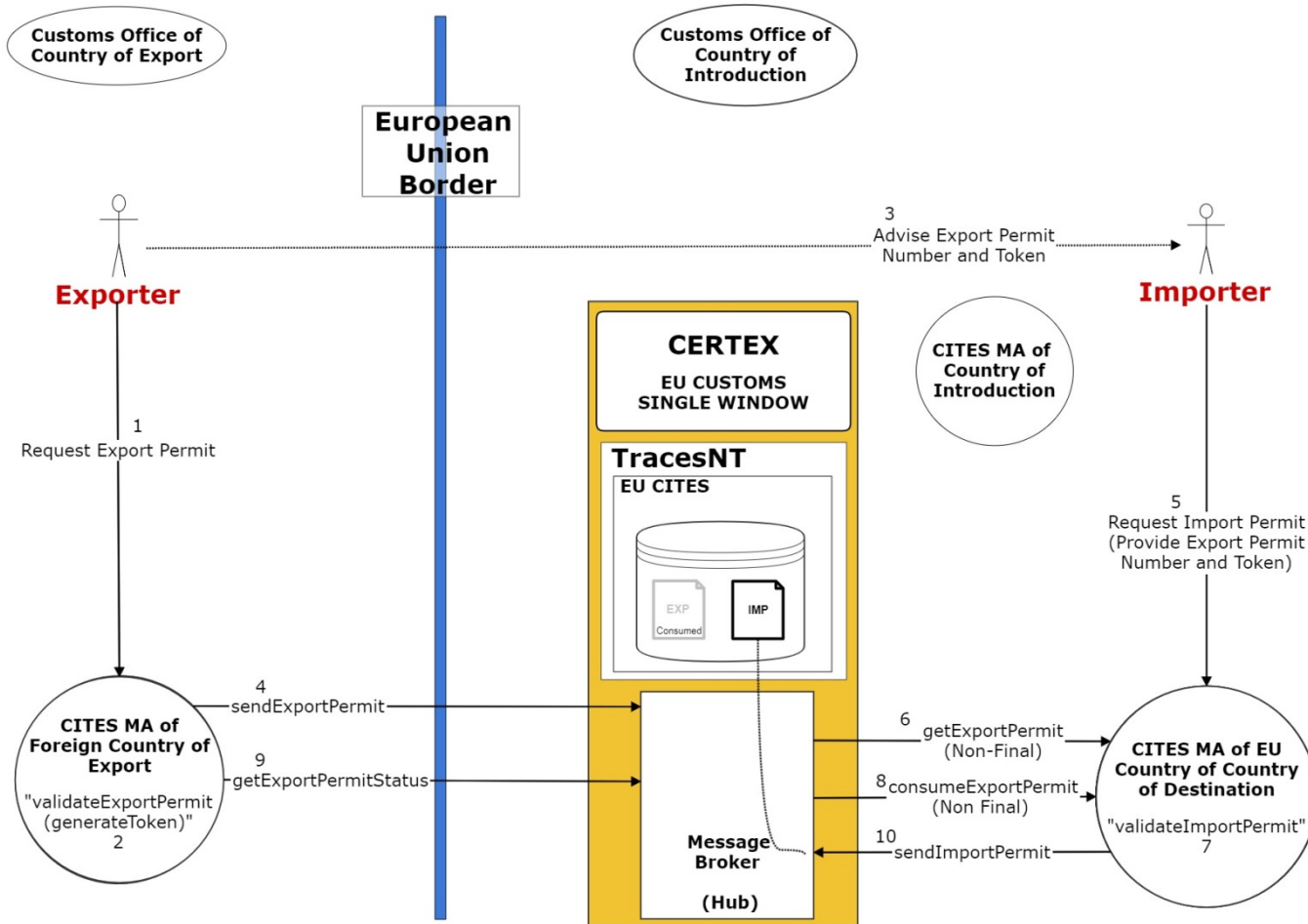
Customs Connected via CERTEX -
Exporting MA has fully Connected Automated System



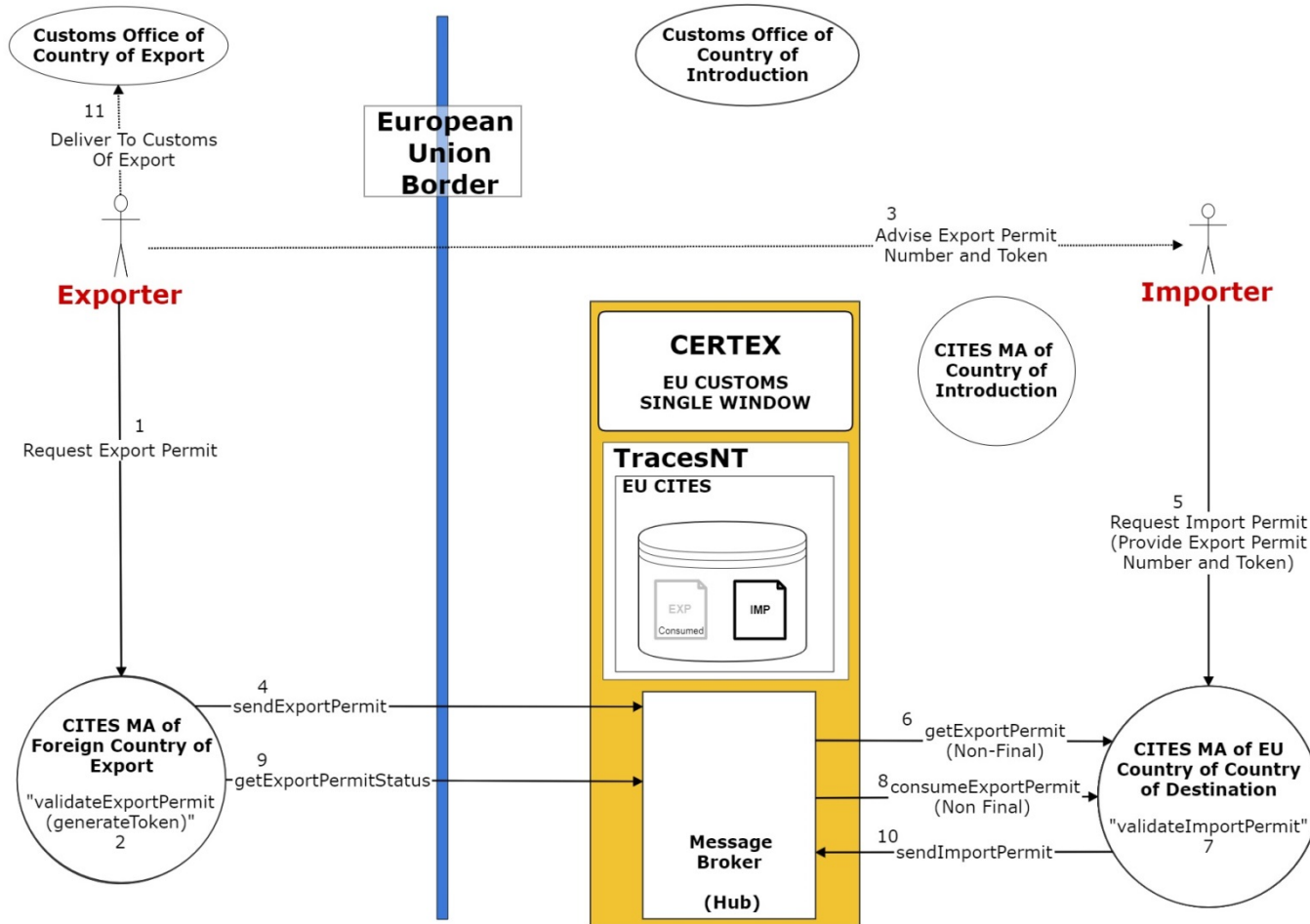
Customs Connected via CERTEX -
Exporting MA has fully Connected Automated System



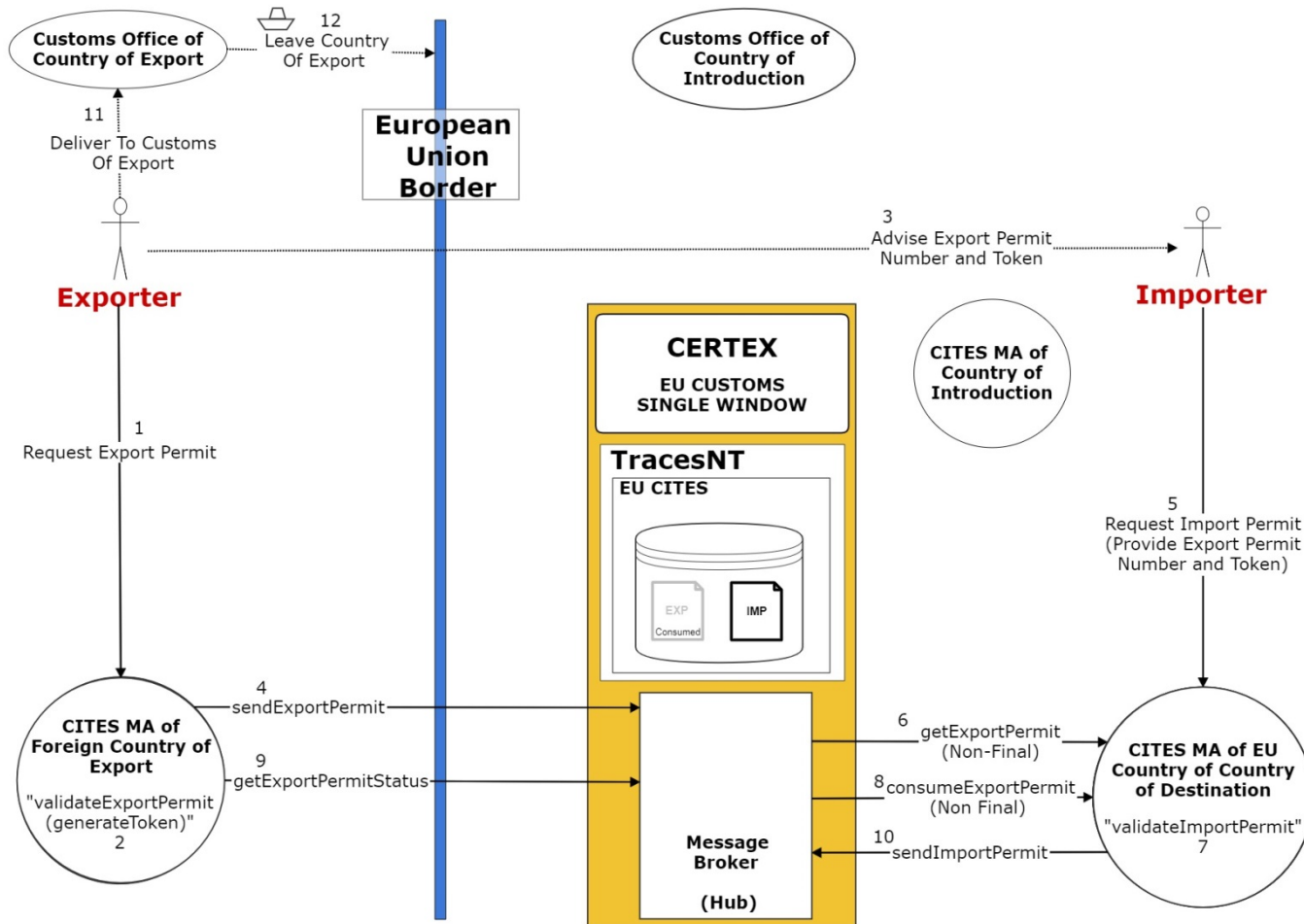
Customs Connected via CERTEX -
Exporting MA has fully Connected Automated System



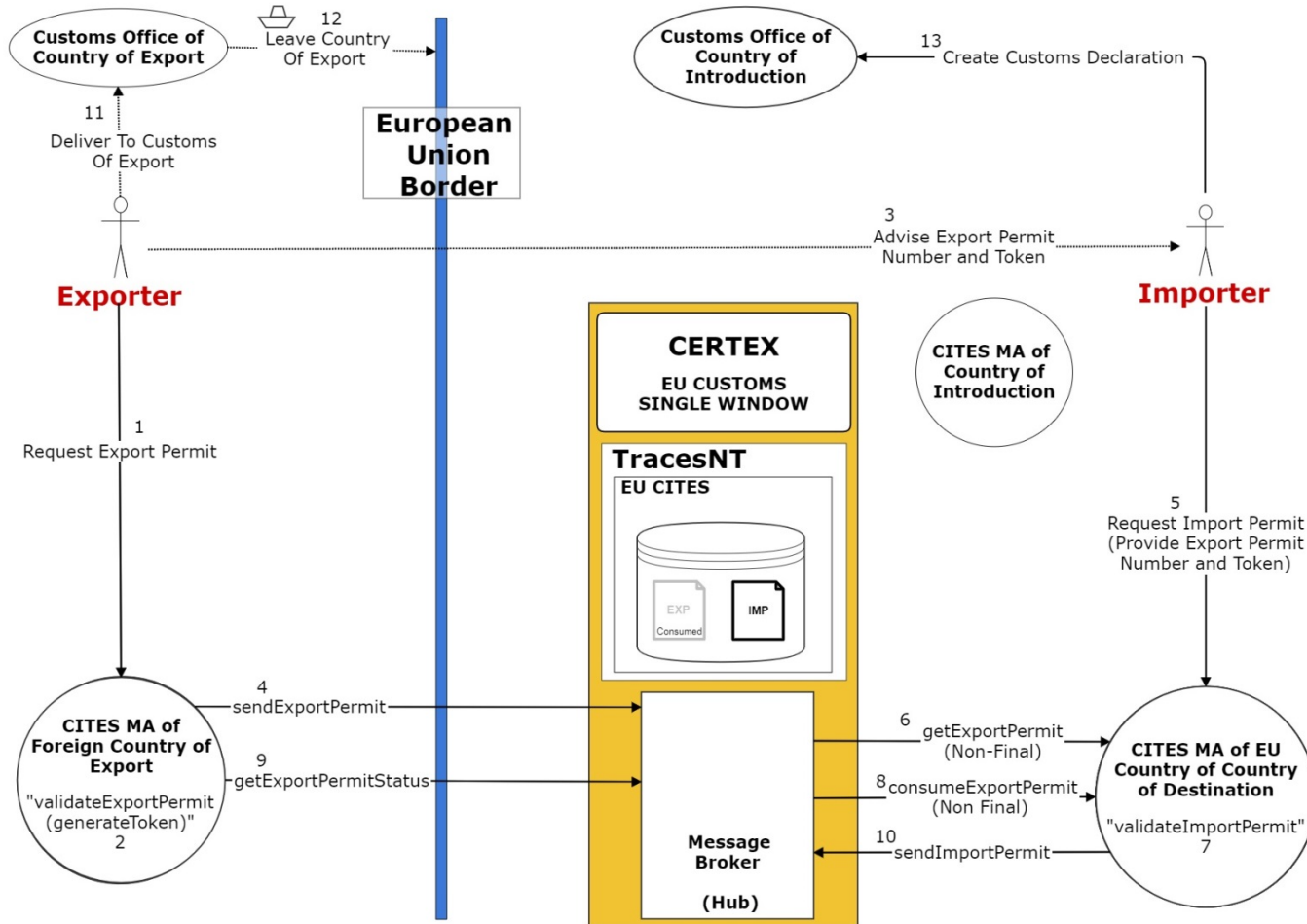
Customs Connected via CERTEX -
Exporting MA has fully Connected Automated System



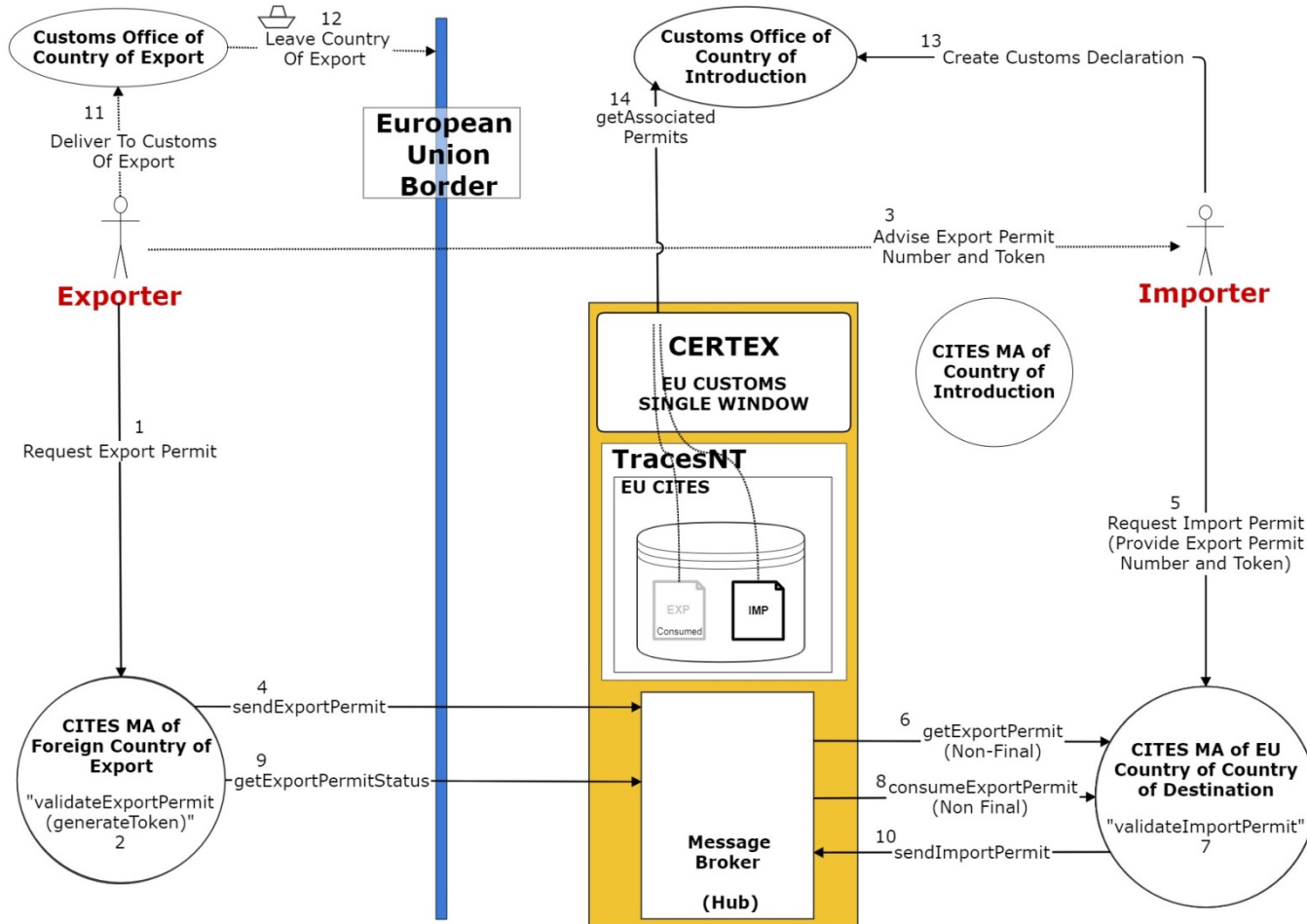
Customs Connected via CERTEX -
Exporting MA has fully Connected Automated System



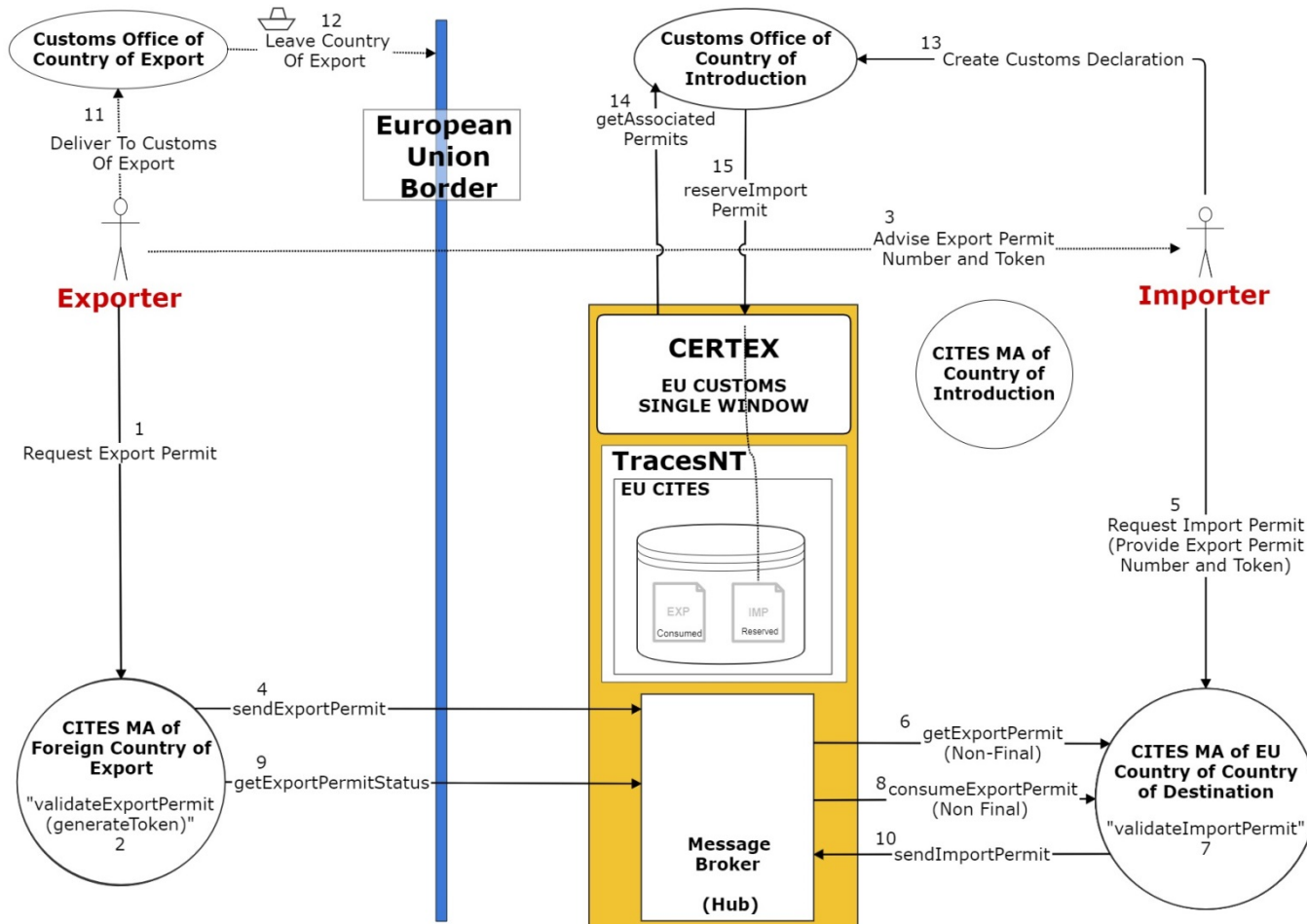
Customs Connected via CERTEX -
Exporting MA has fully Connected Automated System



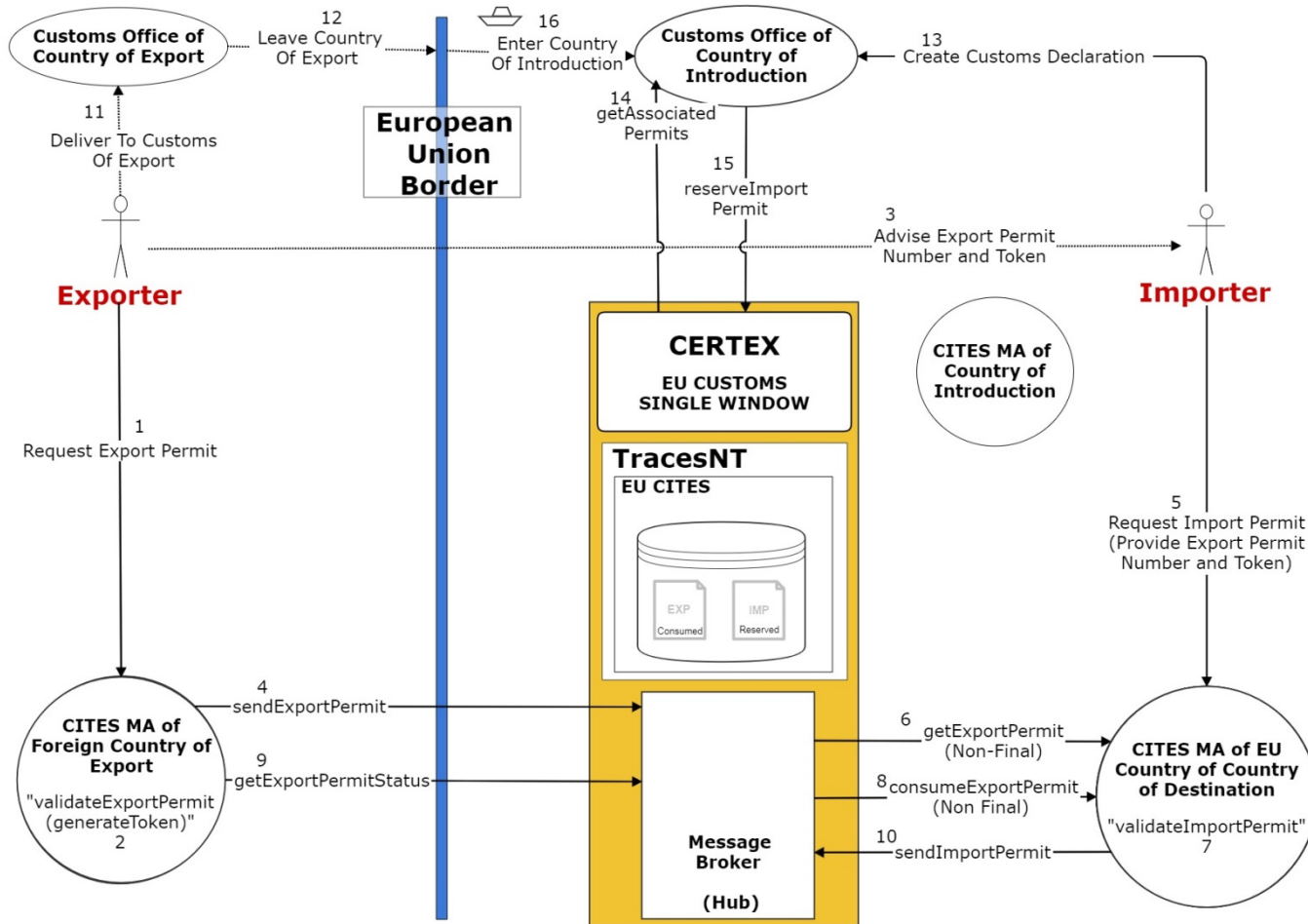
Customs Connected via CERTEX - Exporting MA has fully Connected Automated System



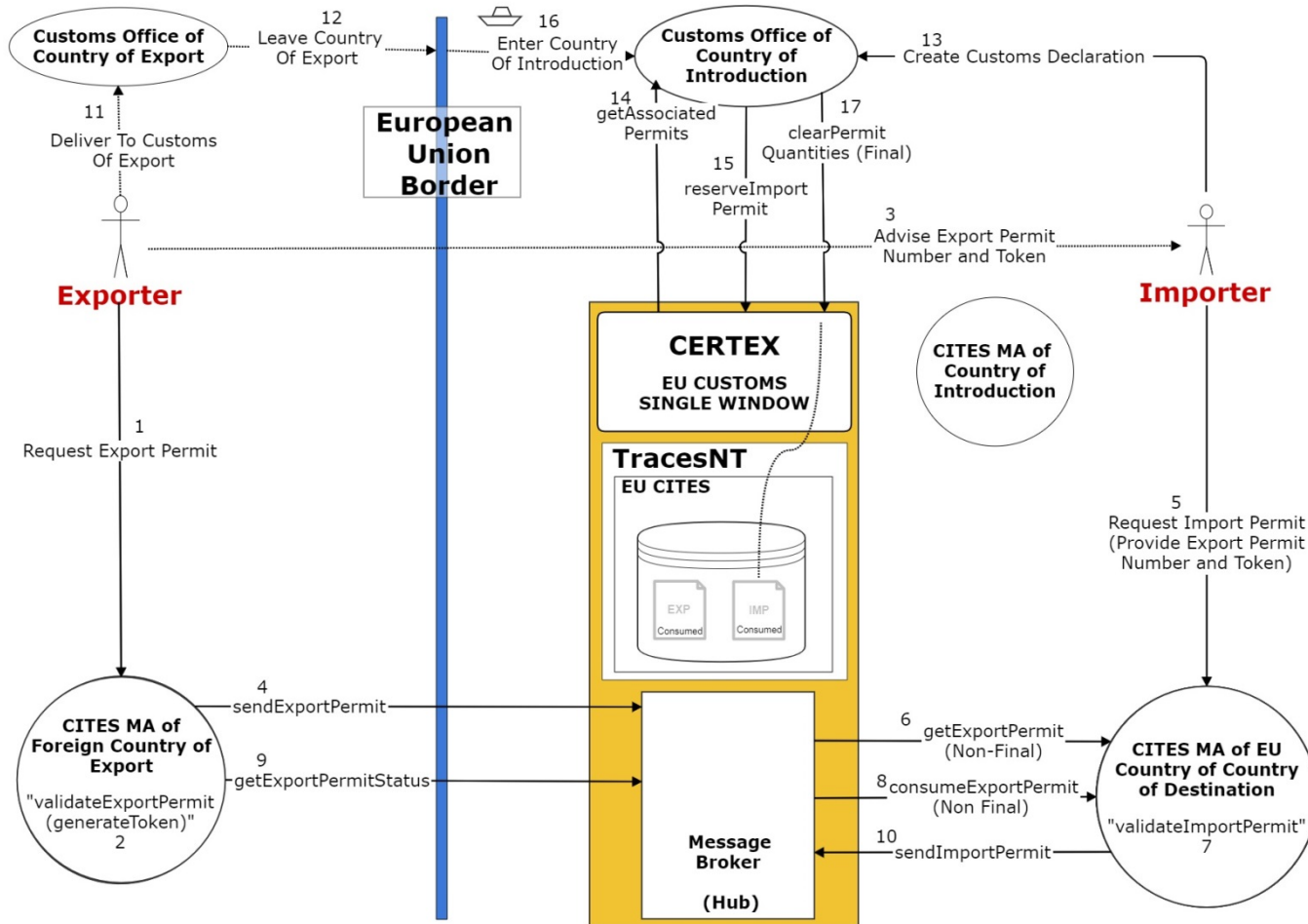
Customs Connected via CERTEX - Exporting MA has fully Connected Automated System



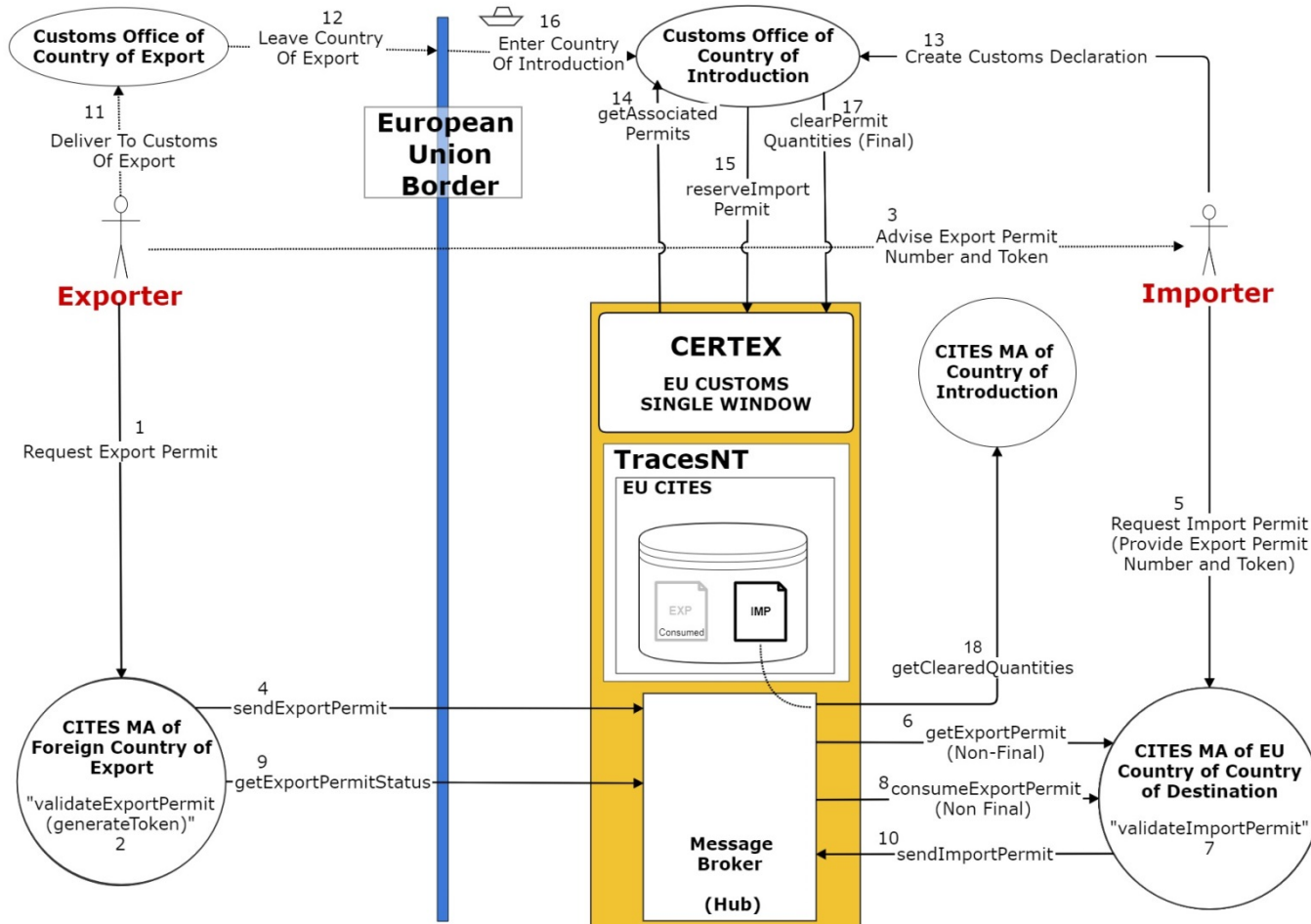
Customs Connected via CERTEX - Exporting MA has fully Connected Automated System



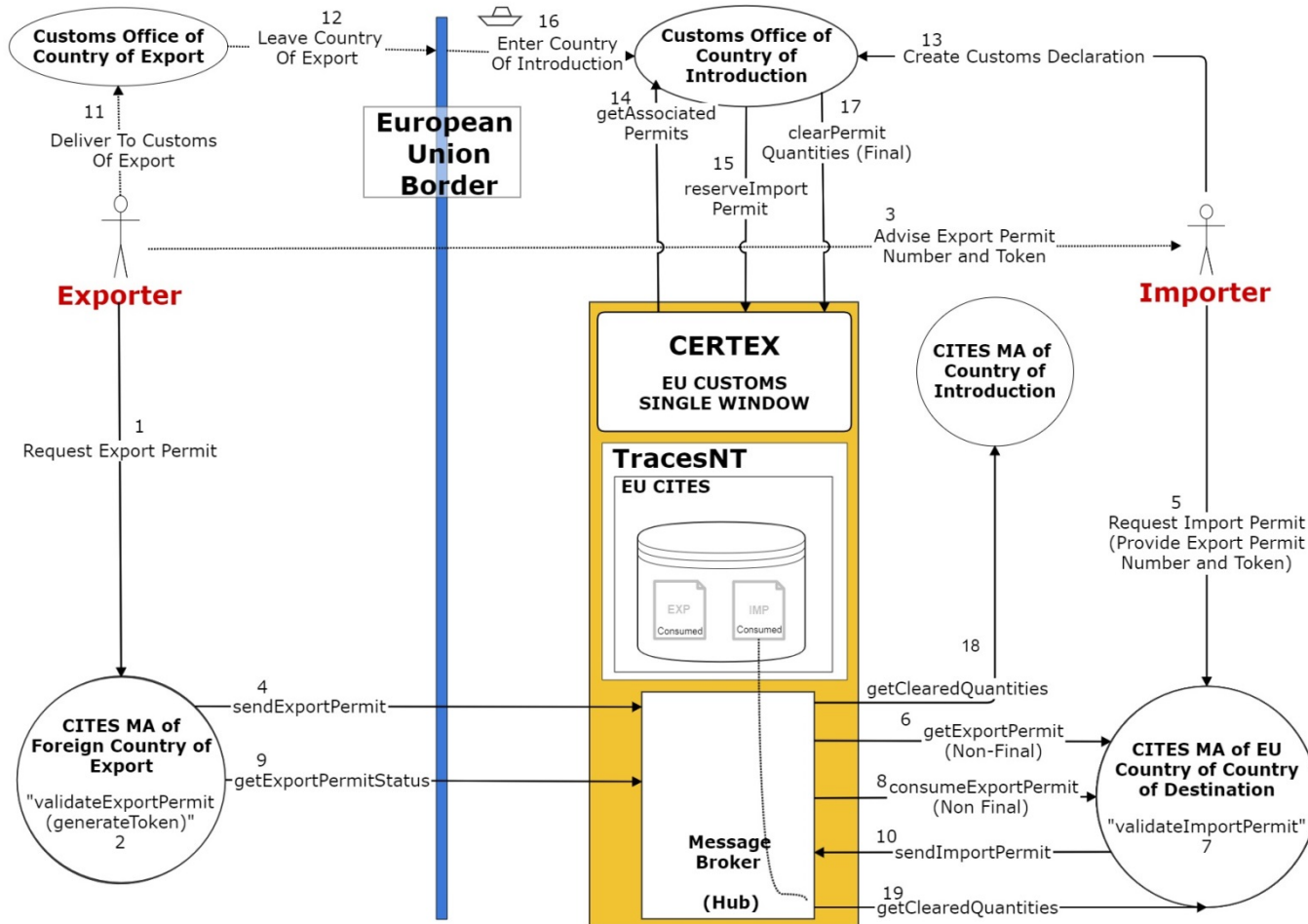
Customs Connected via CERTEX - Exporting MA has fully Connected Automated System



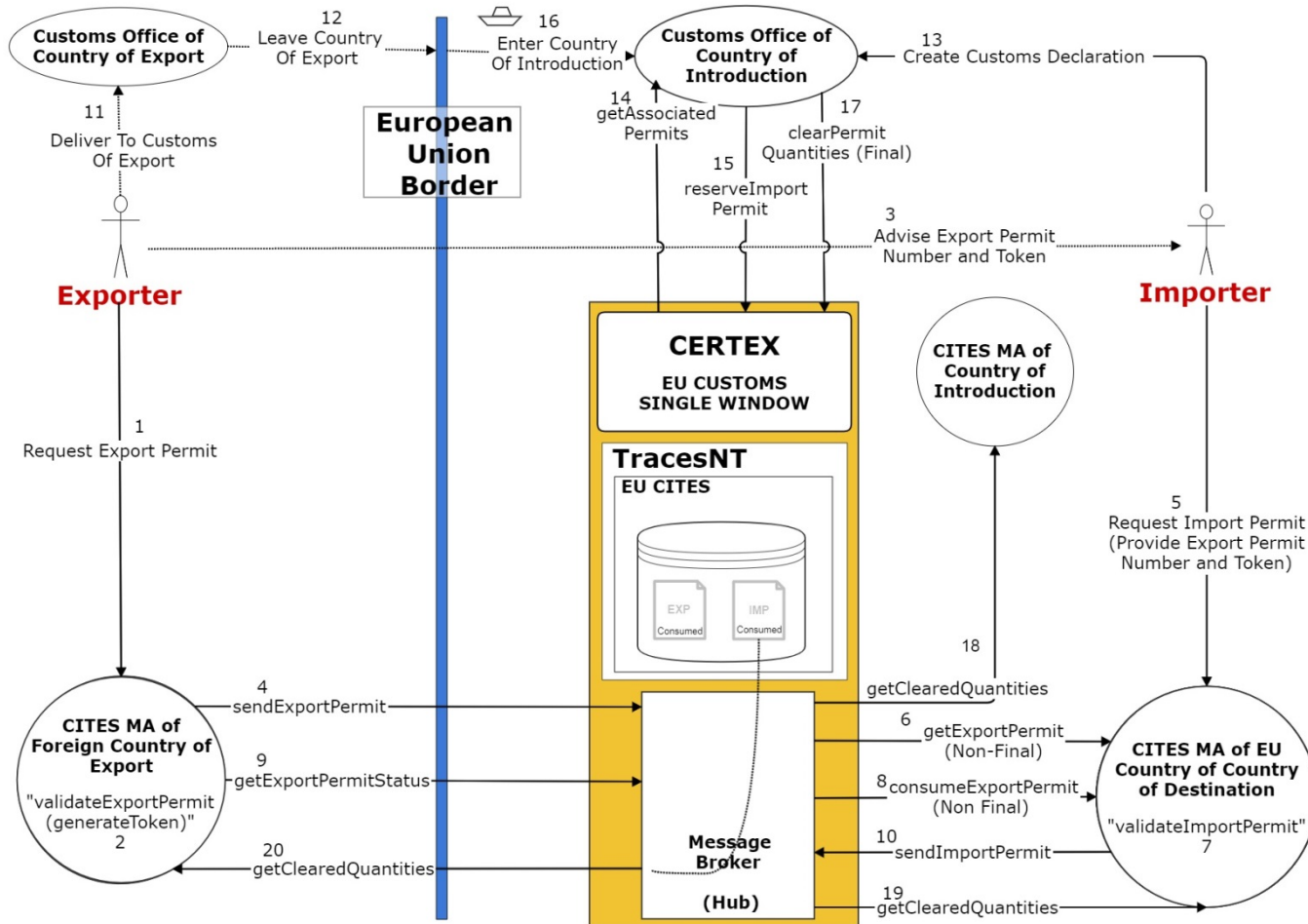
Customs Connected via CERTEX - Exporting MA has fully Connected Automated System



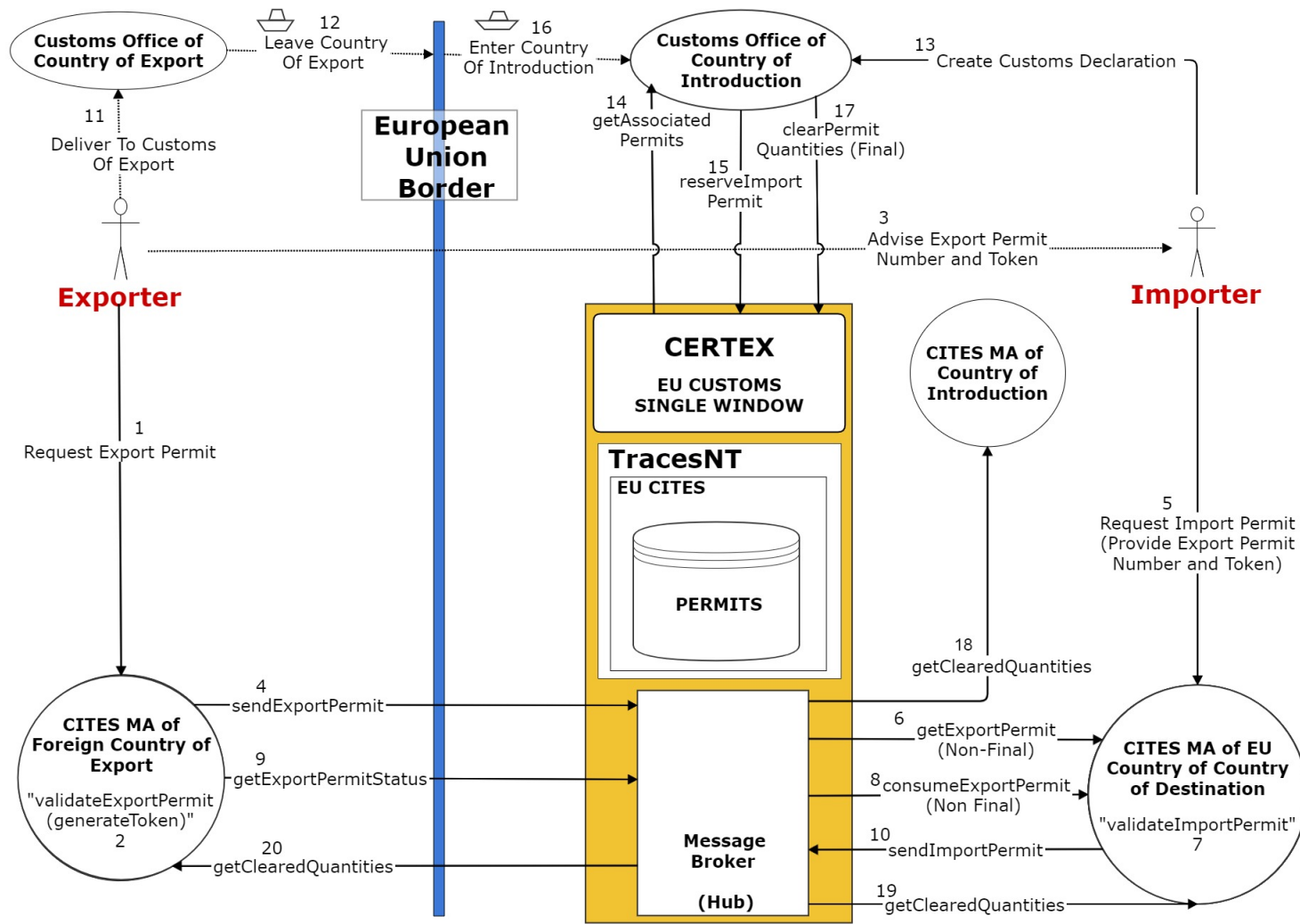
Customs Connected via CERTEX - Exporting MA has fully Connected Automated System



Customs Connected via CERTEX - Exporting MA has fully Connected Automated System



Customs Connected via CERTEX - Exporting MA has fully Connected Automated System



Other Scenarios

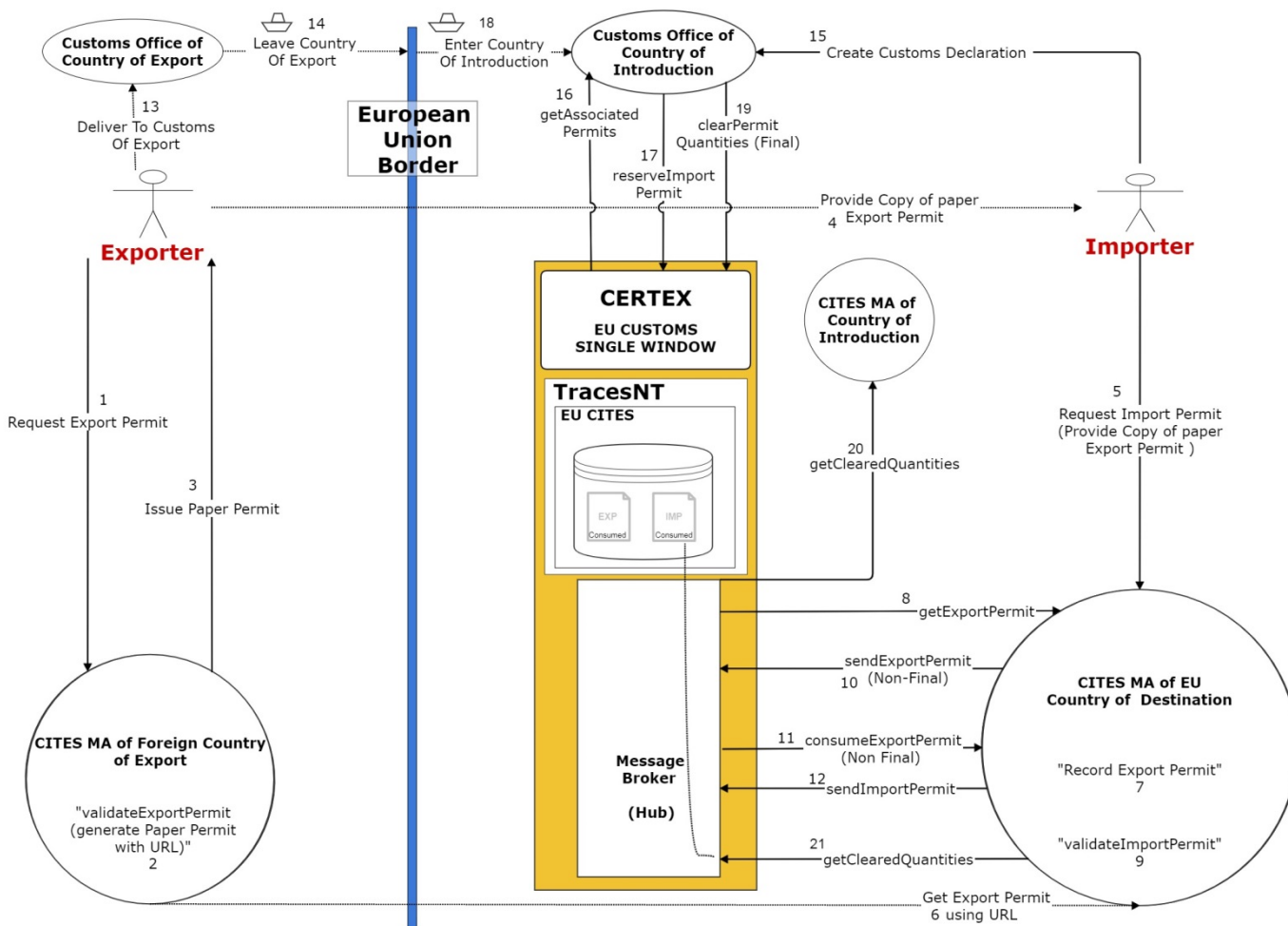
➤ **Scenarios - Static Definition**

- Non-EU Country of Export cannot interact with the Hub but is able to implement the pEPIX protocol
- Non-EU Country of Export has restricted systems capability and effectively can only issue standard paper permits
- EU CITES Authority has restricted systems capability and must use Graphical User Interface into TracesNT

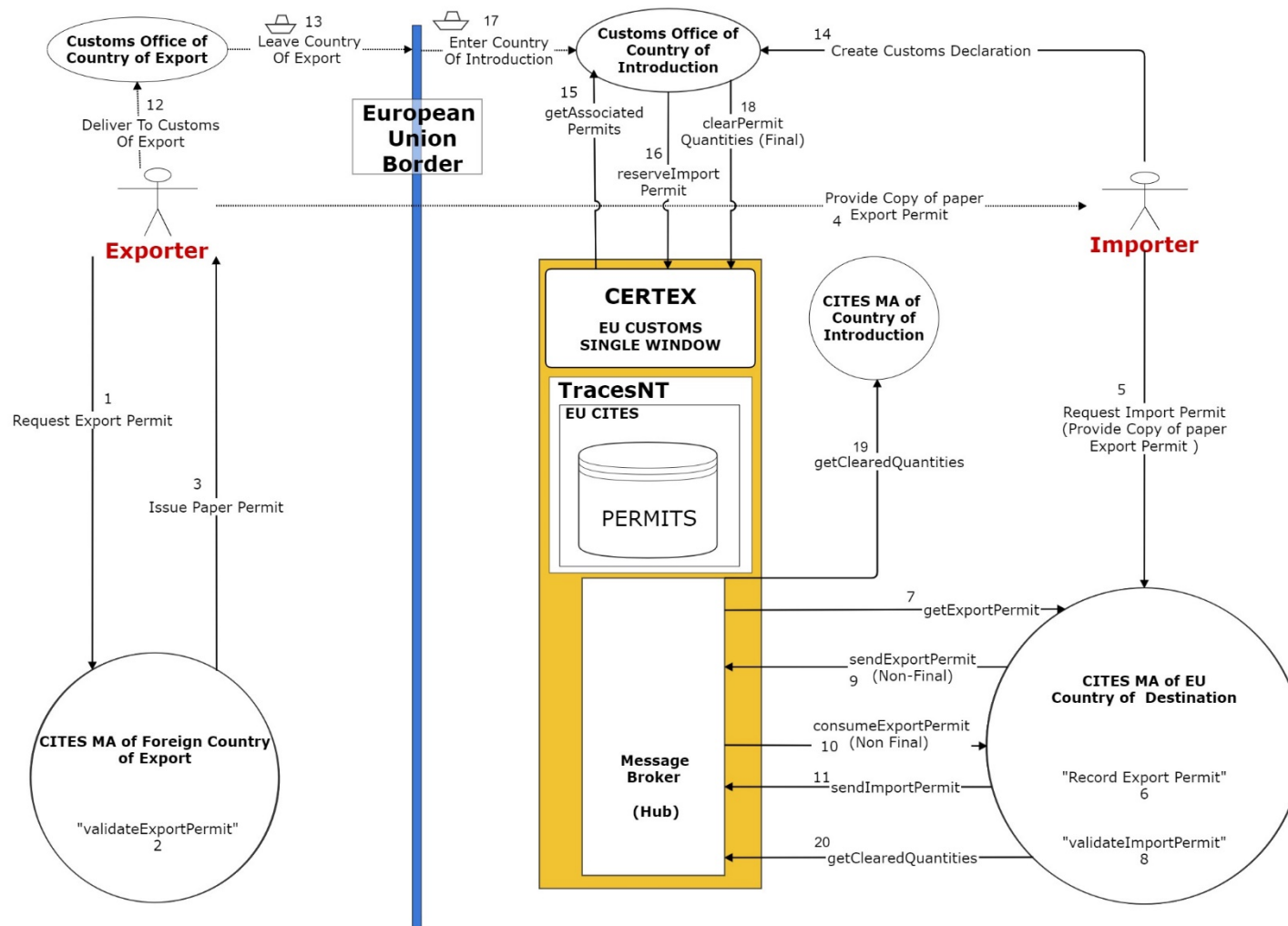
➤ **Scenarios – Work In Progress**

- Import for other Annexes
- (Re-Export)
- Internal Movement
- Derogations (e.g Travelling Exhibition Certificate)
- CERTEX not supportive of CITES Certificates and Permits

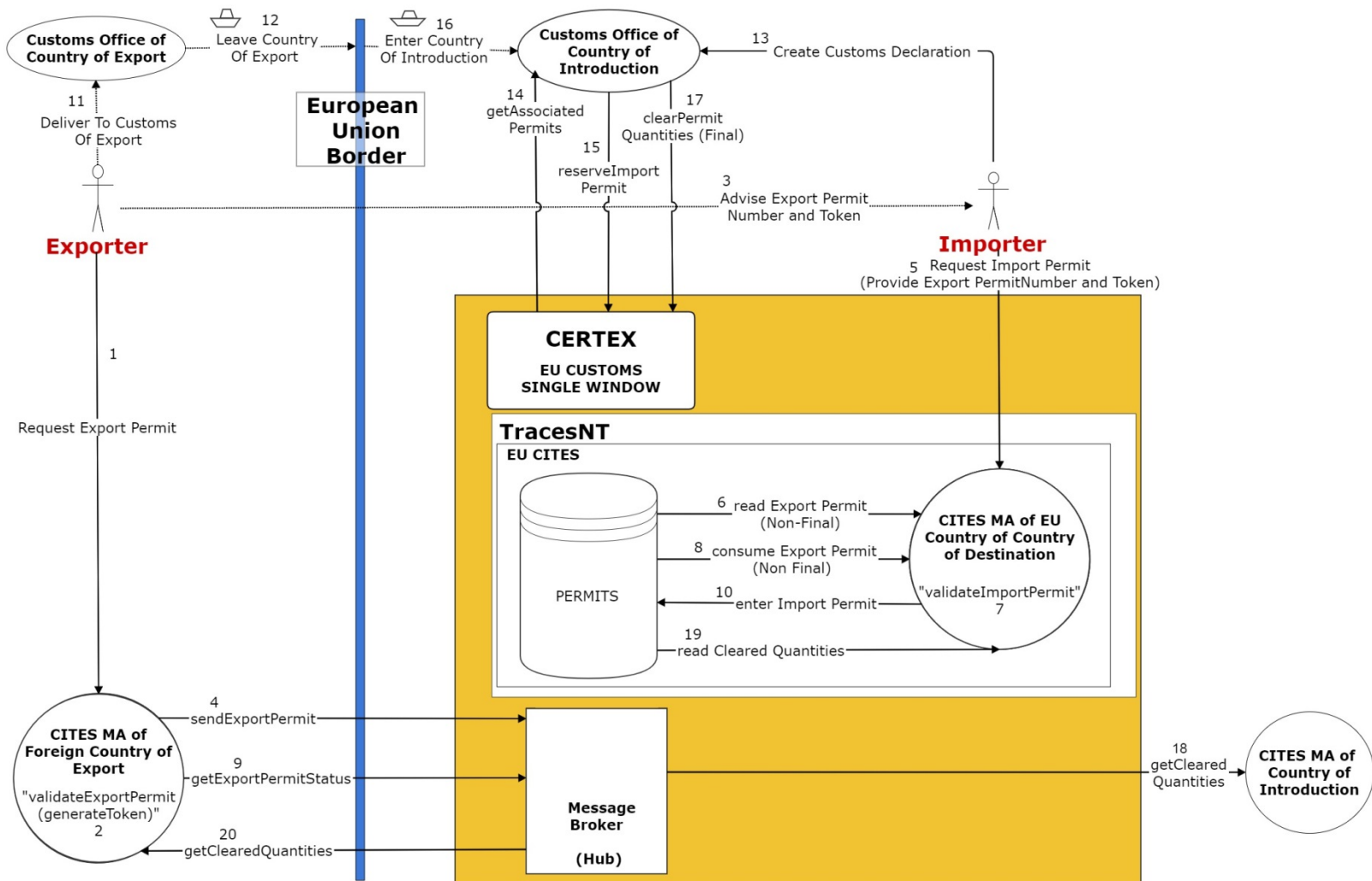
Customs Connected via CERTEX - Exporting MA has a limited Connectivity Automated System



Customs Connected via CERTEX - Exporting MA has no Automated System



Customs Connected via CERTEX - MA of Destination uses EU CITES within TracesNT

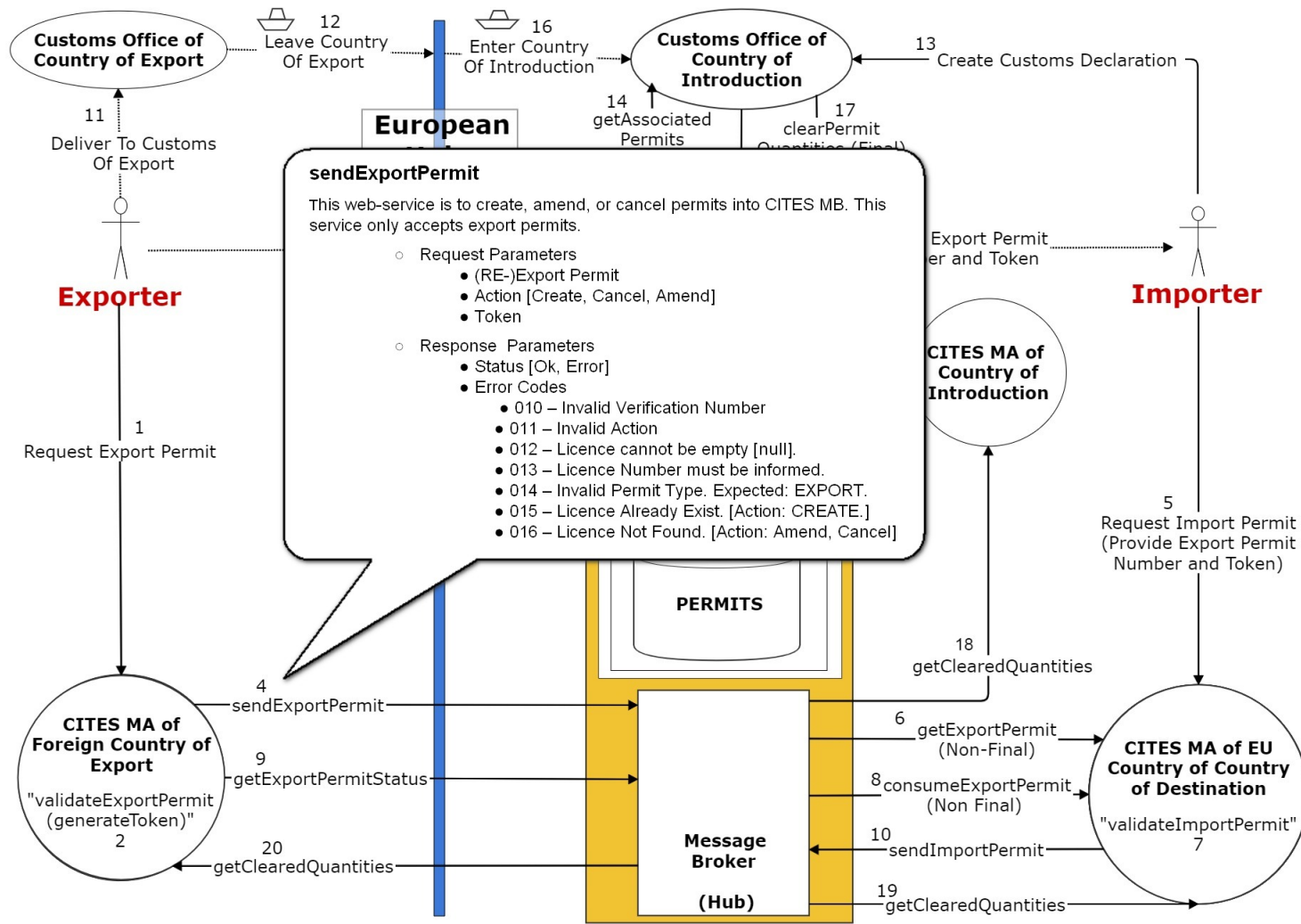




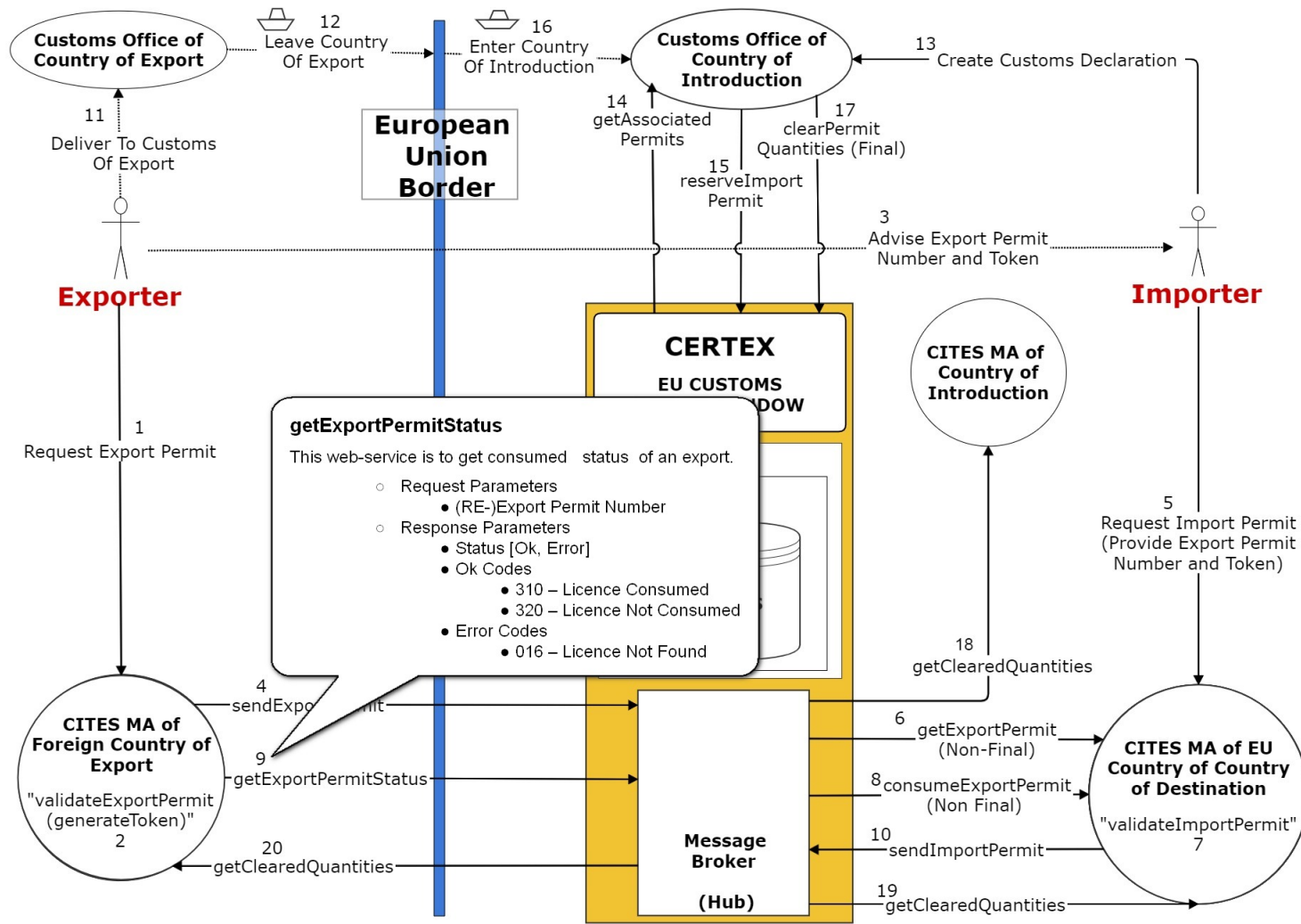
Questions?

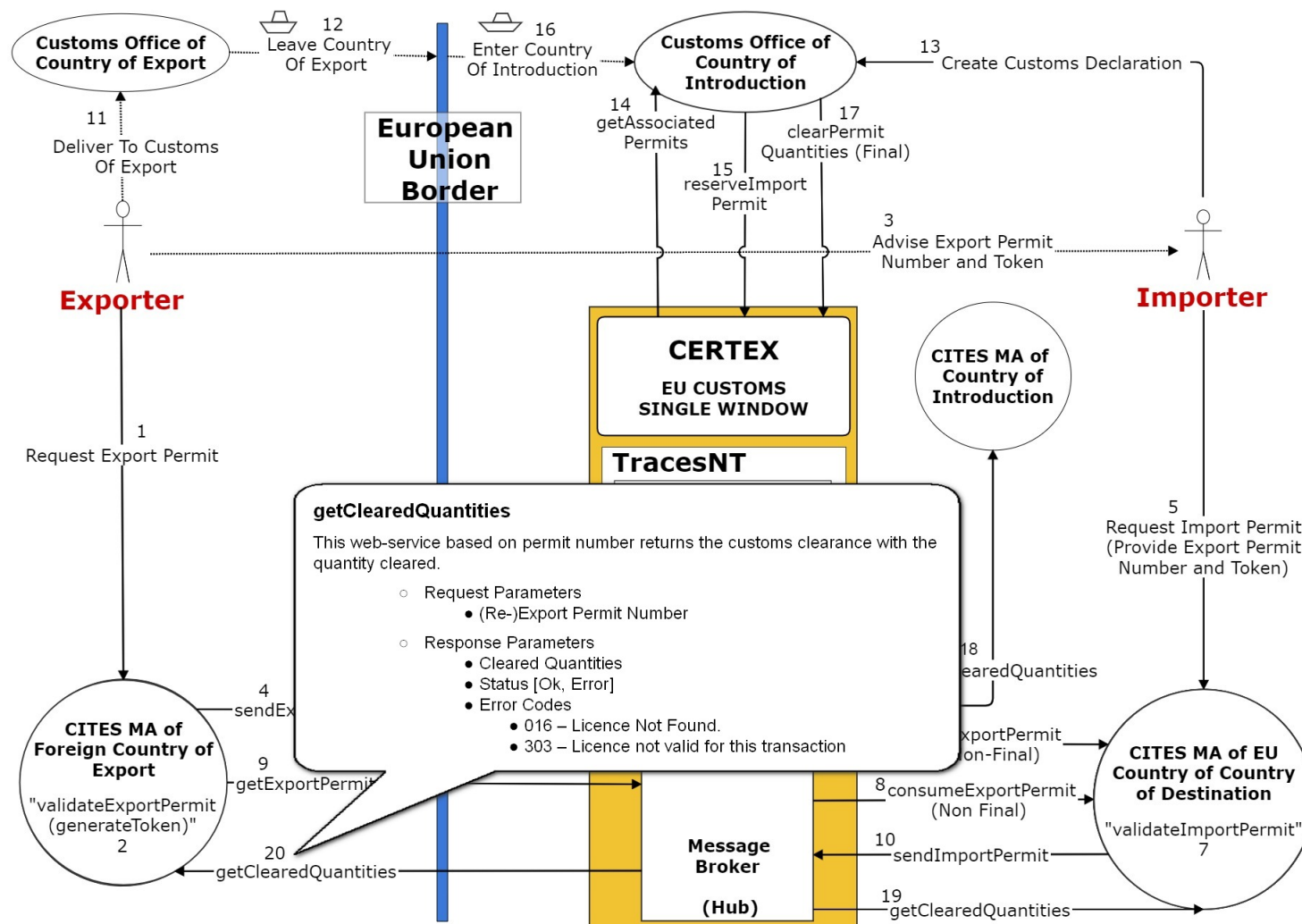
Thank you for your attention

Customs Connected via CERTEX - Exporting MA has fully Connected Automated System

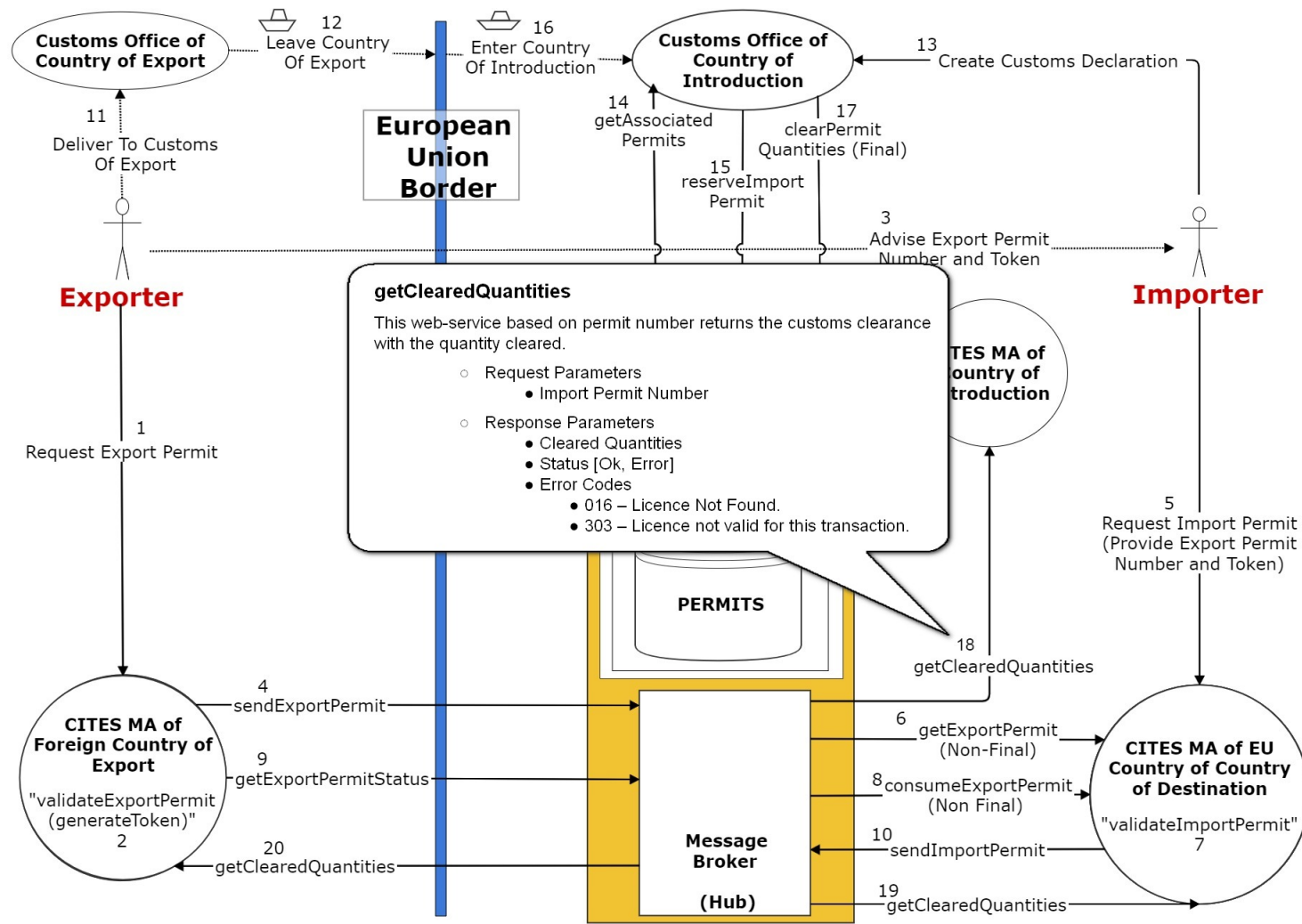


Customs Connected via CERTEX - Exporting MA has fully Connected Automated System

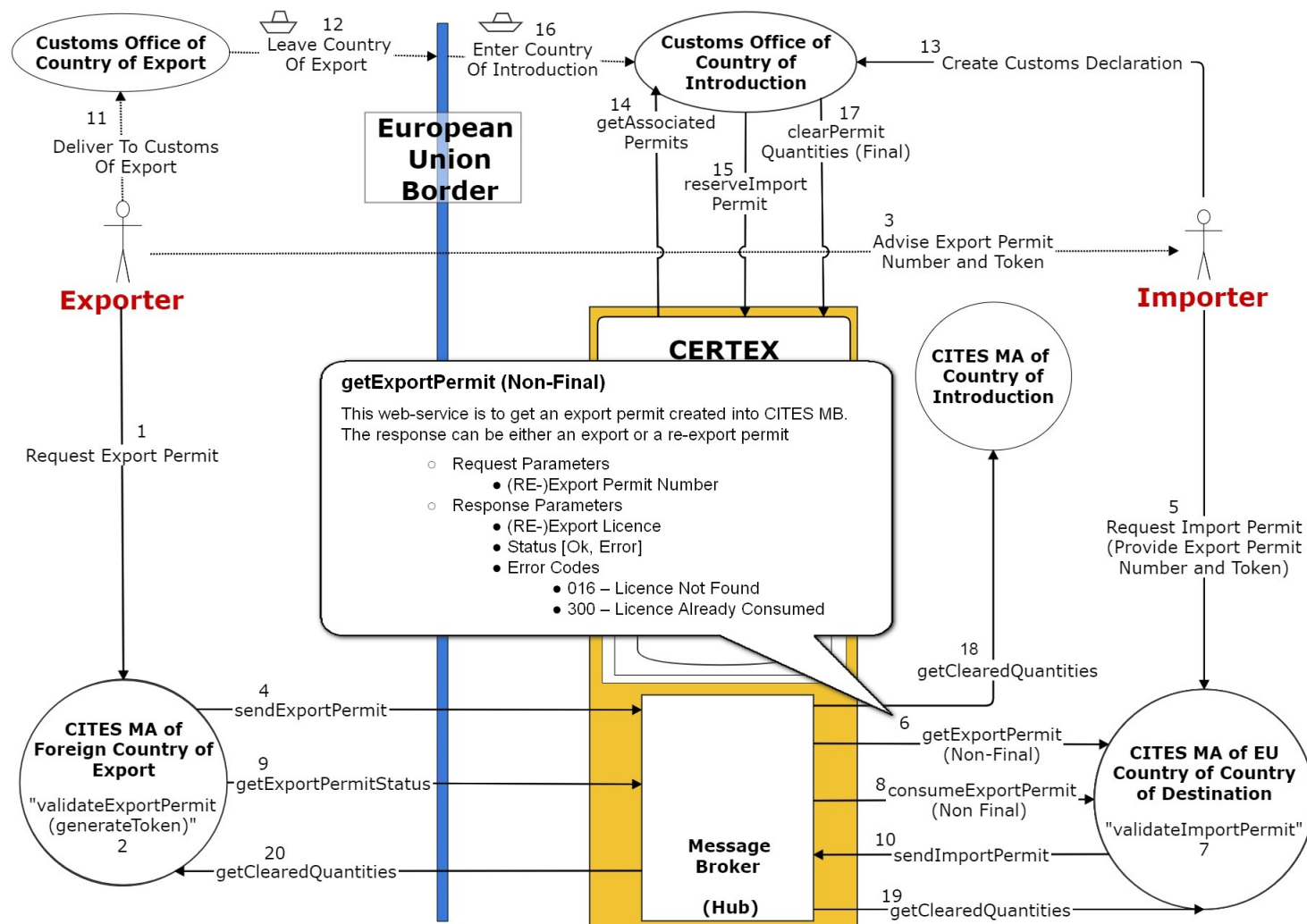




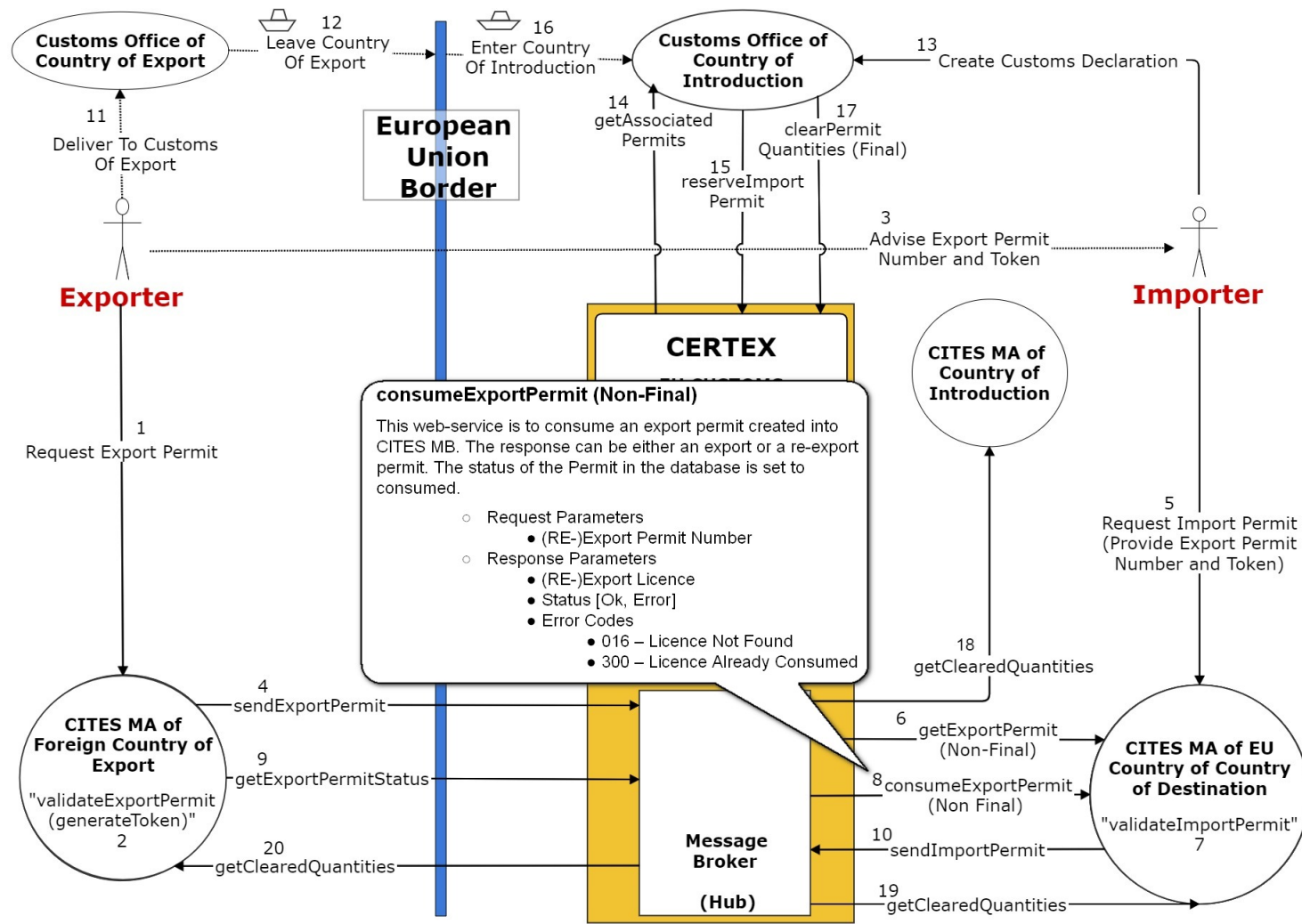
Customs Connected via CERTEX - Exporting MA has fully Connected Automated System



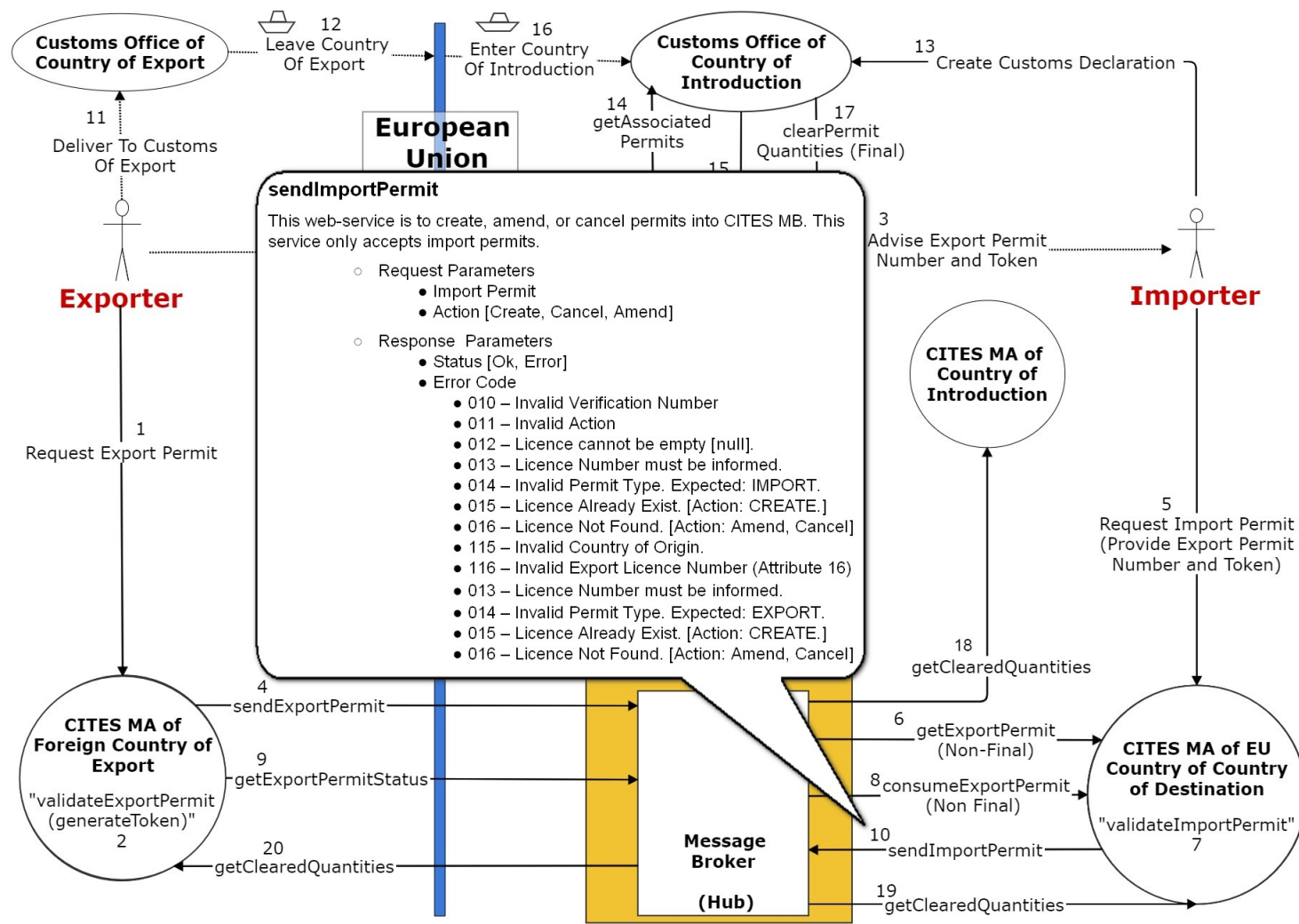
Customs Connected via CERTEX - Exporting MA has fully Connected Automated System



Customs Connected via CERTEX - Exporting MA has fully Connected Automated System



Customs Connected via CERTEX - Exporting MA has fully Connected Automated System



Customs Connected via CERTEX - Exporting MA has fully Connected Automated System

