



## DEFINITION & CLASSIFICATION



This Poster applies to prunes from certain varieties of plums grown from *Prunus domestica* L. considered suitable for drying to be supplied for consumption or mixing with other products for consumption, without further processing

According to their type of presentation, prunes are classified to **whole prunes** are classified in one class, called "PRUNES" – "Class I" and **prunes without pits** are classified into two classes: "Prunes without pits" – "Class I" and "Pressure-pitted prunes" – "Type E" or "Class II".

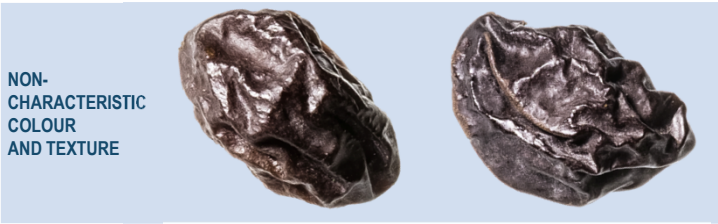
The classification is determined in accordance with defects allowed in the Standard's section "IV. Provisions concerning tolerances".



WITH PITS

WITHOUT PITS

## QUALITY DEFECTS



NON-CHARACTERISTIC COLOUR AND TEXTURE



SLIGHT DECAY, MOULD



END CRACKS



FRUIT INFECTED BY INSECTS OR MITES



SKIN OR FLESH DAMAGE



FOREIGN MATTER OF VEGETABLE ORIGIN  
(EXCEPT WHOLE PITS AND FRAGMENTS OF PITS FOR PITTED PRUNES)



CALLOUSES AND HEAT INJURY



WHOLE PITS FOR PITTED PRUNES



INSECT DAMAGE



FRAGMENTS OF PITS FOR PITTED PRUNES



FERMENTATION

\* The UNECE Standard for Prunes can be downloaded from the following web site: [www.unece.org/trade/agr/welcome.html](http://www.unece.org/trade/agr/welcome.html)  
\* The UNECE standard are published in three official languages of United Nations Economic Commission for Europe: English, Russian and French. Should any discrepancies be found between official version of Poster with national language versions, English and Russian version should prevail.