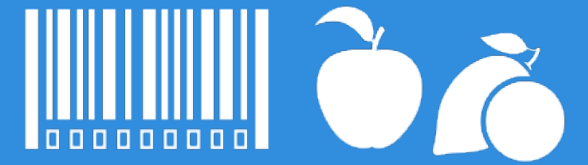
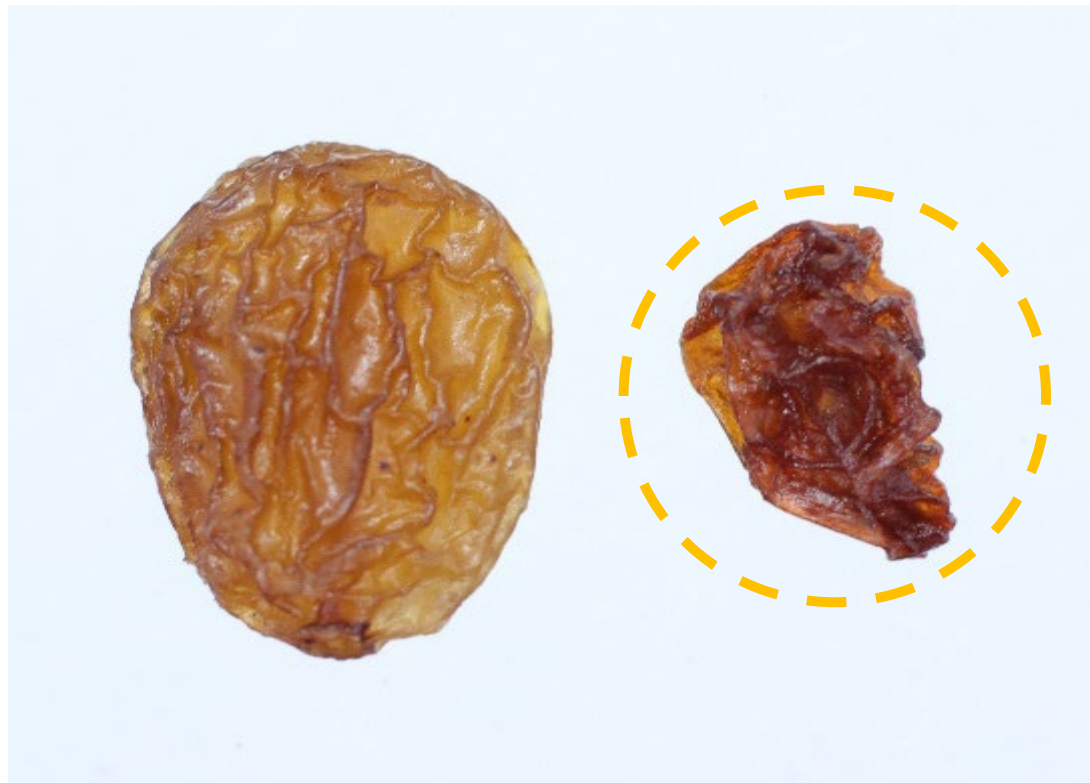


DEFINITION & CLASSIFICATION



The UNECE standard applies to seed-bearing and seedless dried grapes from varieties (cultivars) grown from *Vitis vinifera* L. intended for direct consumption. Dried grapes are classified into the following **three classes: Extra Class, Class I and Class II**. **The classification is determined in accordance with the defects allowed in the Standard's section "IV, Provisions concerning tolerances"**.

QUALITY DEFECTS



UNDERVELOPED



MOULD



DAMAGED BY PESTS



MECHANICAL DAMAGE



BERRIES HAVING SEEDS IN
SEEDLESS TYPES



BERRIES WITH CAPSTEM
ATTACHED



SUGARED



PIECES OF STEM/MINERAL IMPURITIES/EXTRANEIOUS VEGETABLE
MATERIALS

NOTES:

Undeveloped: Side by side comparison developed and undeveloped berries.

Mould: When a dried grape suspected of being moldy is rubbed on a white surface, if there is a mould then a black track will appear.

Berries with capstem attached: The tolerance for capstems applies only to dried grapes presented without capstems.