



Food and Agriculture
Organization of the
United Nations

2019

THE STATE OF FOOD AND AGRICULTURE

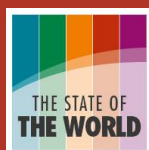
**MOVING FORWARD
ON FOOD LOSS
AND WASTE REDUCTION**

2019

THE STATE OF FOOD AND AGRICULTURE

**MOVING FORWARD
ON FOOD LOSS
AND WASTE REDUCTION**

Geneva | November 20, 2019



There is wide variability in food loss and waste

FAO's new estimates for food loss are a big step towards action

1/3 of food is lost or wasted

FAO raised awareness on food loss and waste with a global estimate in 2011



SDG Target 12.3

reflects growing attention to the issue

Creation of two indices to measure progress towards this target



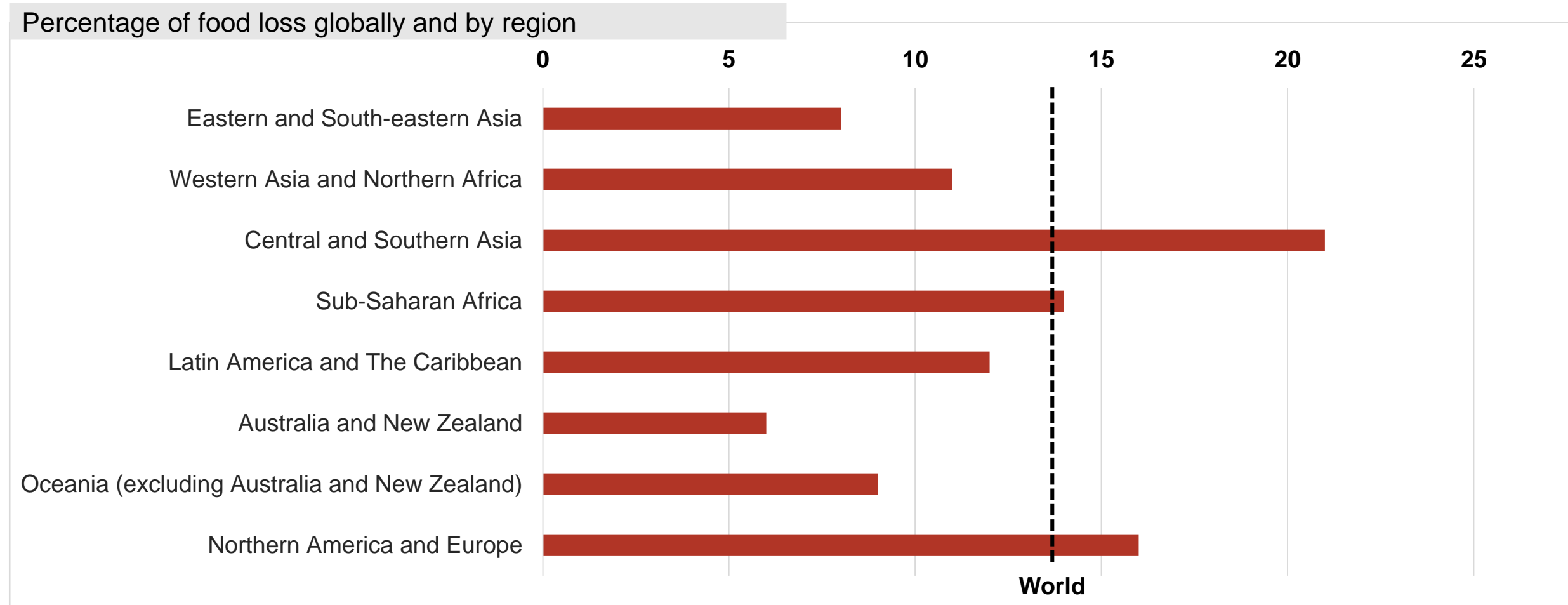
FOOD LOSS INDEX



FOOD WASTE INDEX

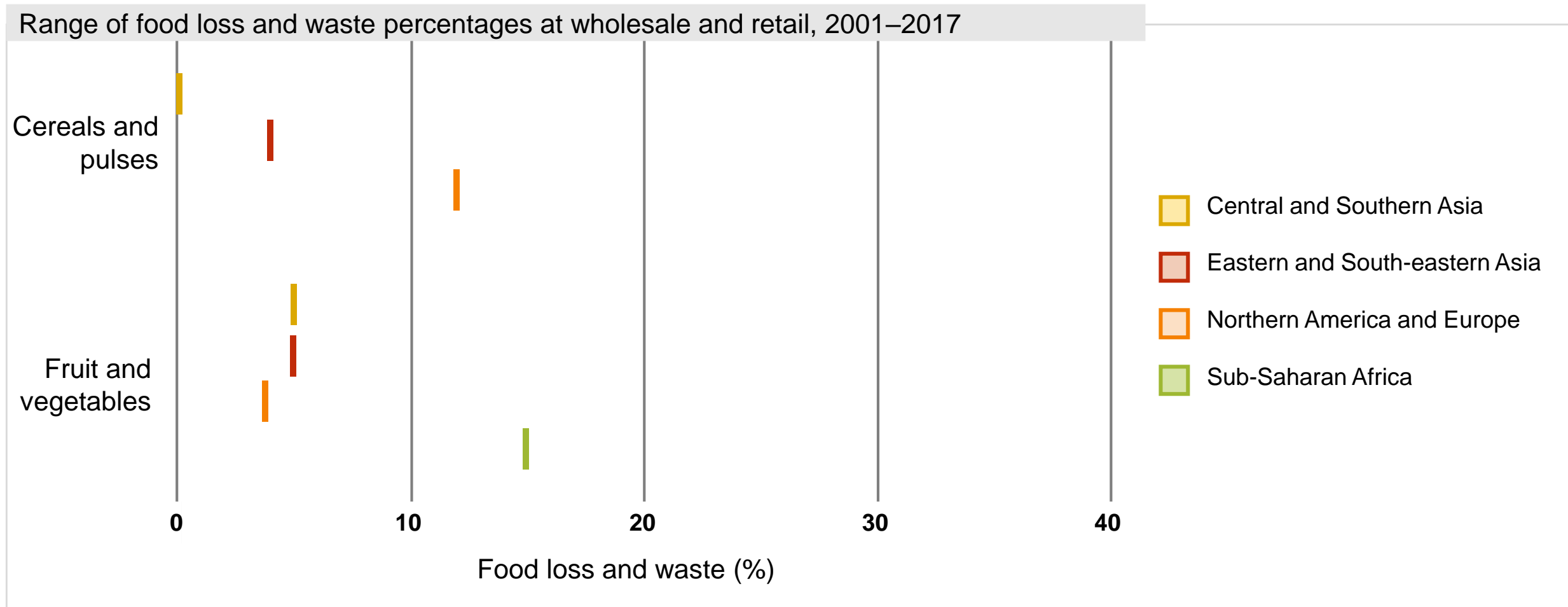
Globally, around 14% of food produced is lost

From post-harvest to (but excluding) retail stage



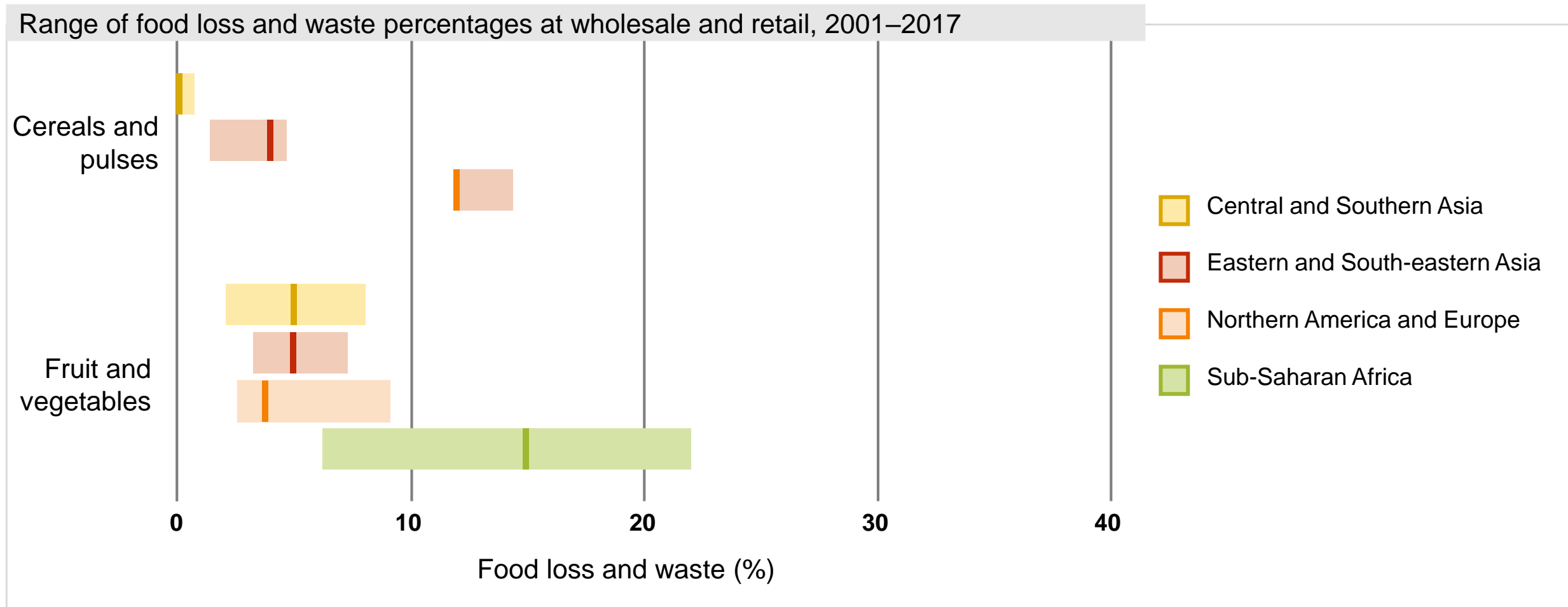
Guidance on where to intervene

The median values of FLW across regions, commodities and stages of food supply chain



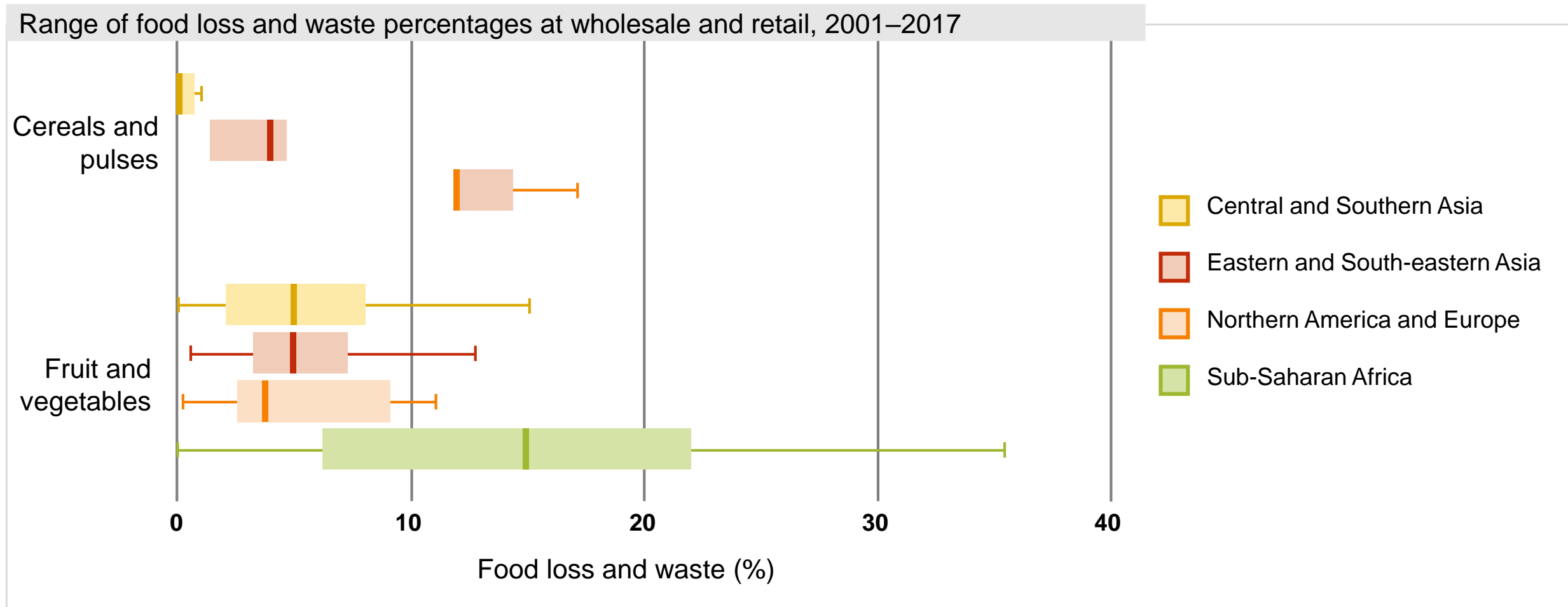
Guidance on where to intervene

The boxes around the median lines highlight substantial variability of FLW



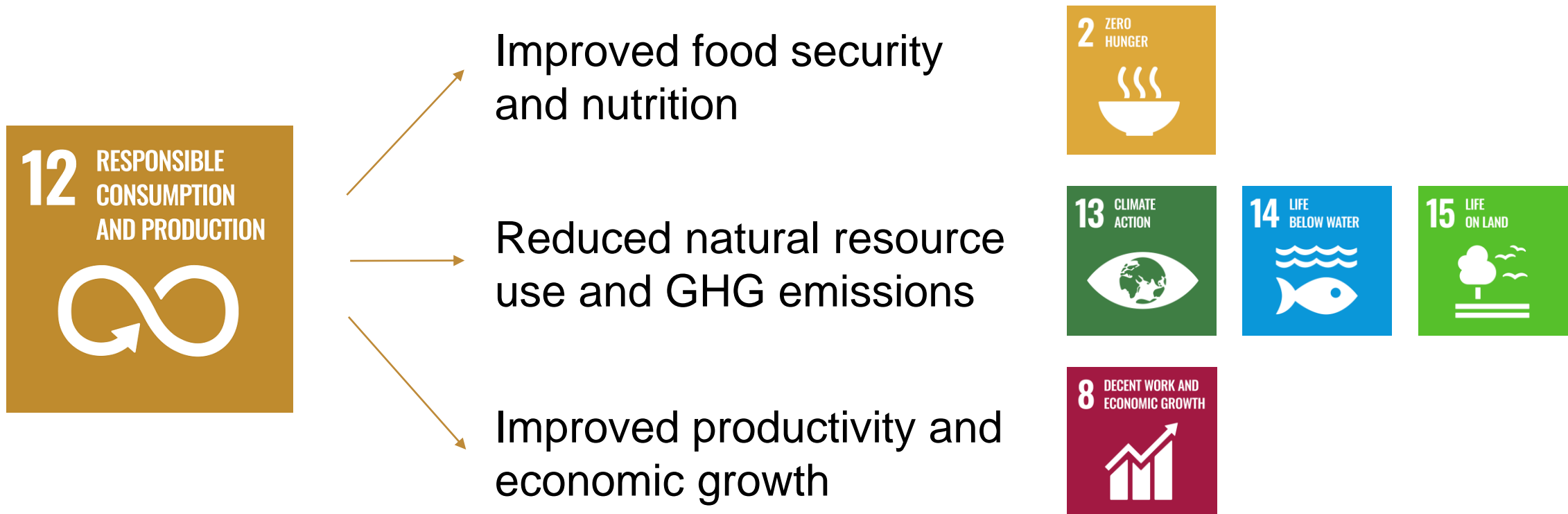
Guidance on where to intervene

The wide ranges of variability show scope for reduction at higher-end of the range



Reducing food loss and waste benefits society, but trade-offs exist

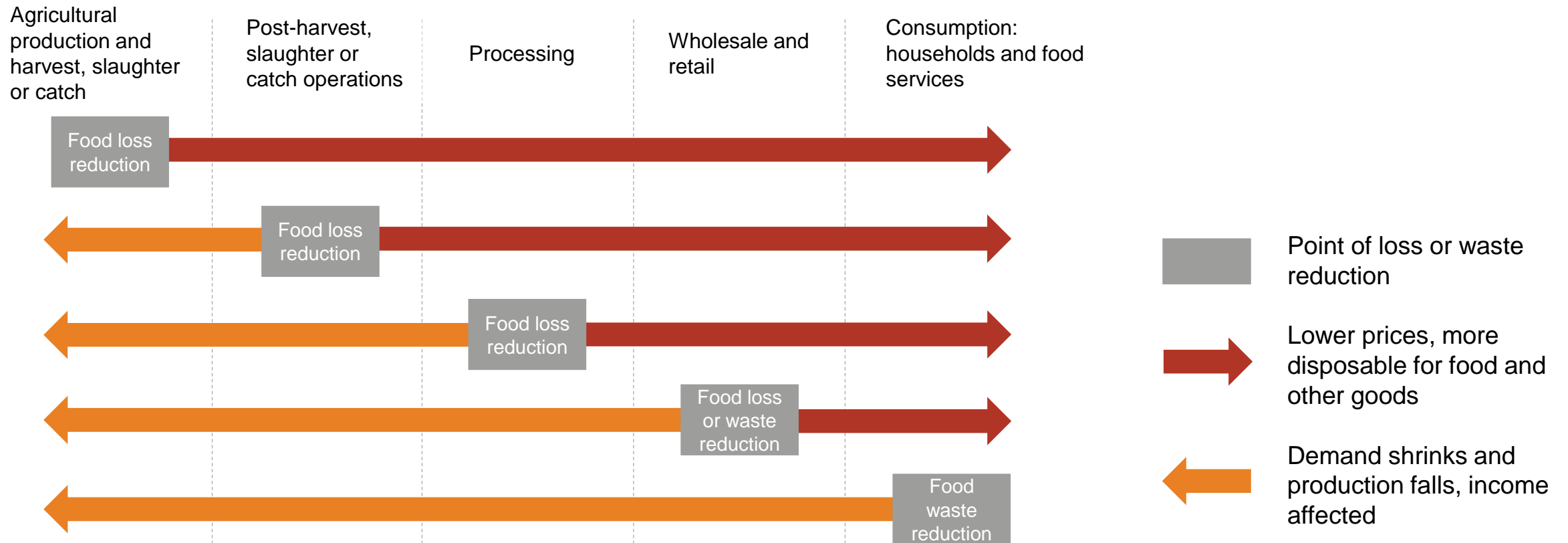
But interventions need to be tailored to countries' contexts and objectives



Impact of reductions on food security and nutrition

Reductions should occur early on in the supply chain and in highly food-insecure countries

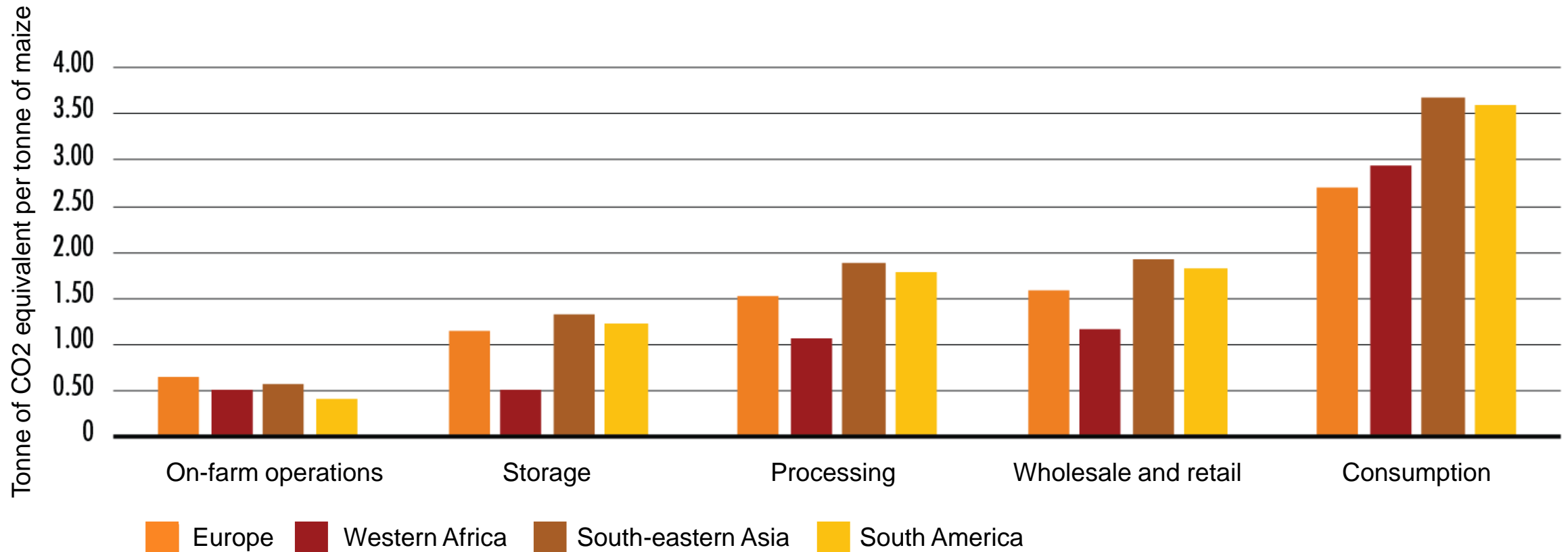
Price and income effects of food loss and waste reduction along the supply chain



Impact of reductions on environmental sustainability

Reductions close to the farm stage are most effective in reducing land and water use.
Reductions at consumer, retail levels are most effective in reducing GHG emissions.

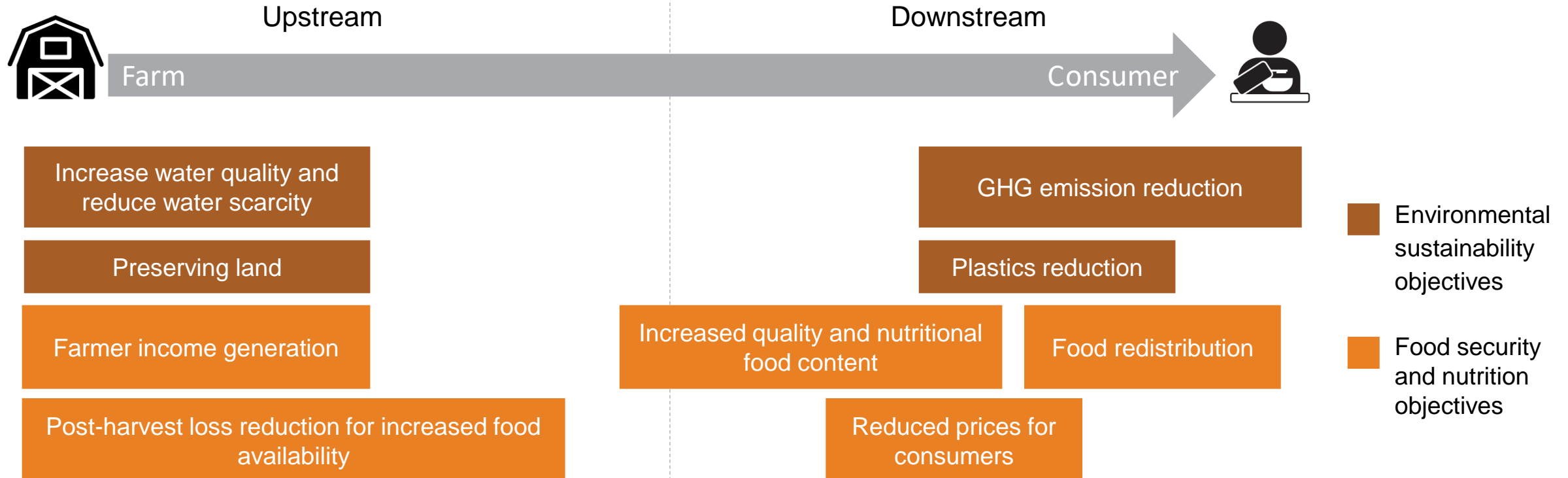
Carbon footprint of maize production along the supply chain



Adapting strategies to country context

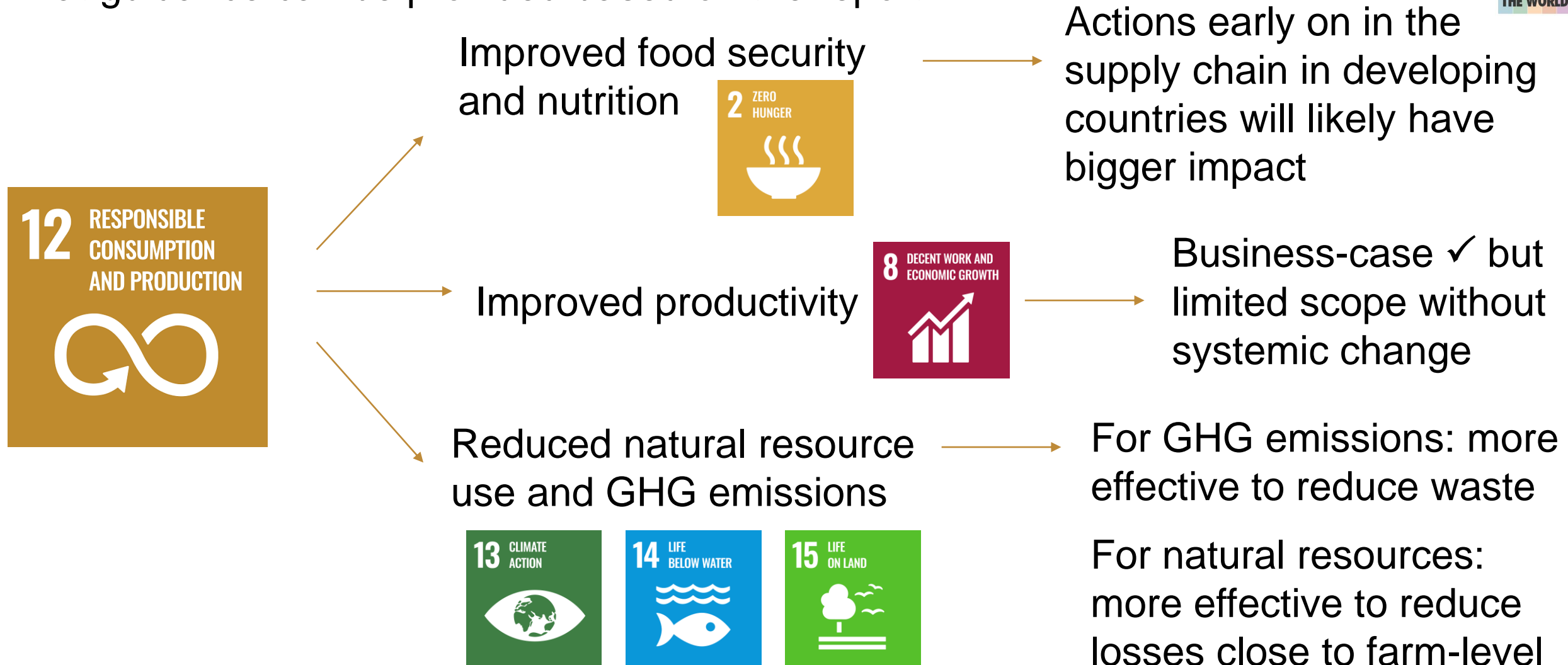
Objectives are different from country to country. They should formulate strategies in line with their objectives.

Aligning objectives and intervention entry points along the food supply chain



From a systemic point of view

What guidance can be provided based on the report?



FAO's priority: closing the information gap

Moving forward, all countries must boost **capacity development**, **targeted investments** to reduce loss, and **inform the public** about food waste

FAO has generated improved estimates on food loss

FAO has developed guidelines to help countries collect
data

FAO assists countries to identify critical loss points

- **Current initiatives**

- EU platform on FLW brings together stakeholders
- Improved measurement efforts are ongoing quantifying FLW at different stages in the supply chain (for SDG target 12.3)
- Guidelines to facilitate food donations

- **Areas that remain challenging**

- Very limited data on costs and benefits of reducing losses, which is key for deciding about interventions
- Reducing losses at scale likely more challenging than reducing waste at retailer and consumer levels

Thank you



**Consult the SOFA series
starting from 1947**

www.fao.org/publications/sofa



Consult available data on FLW at: www.fao.org/food-loss-and-food-waste/flw-data