



Quality Assurance. **From farm to shop.**

Traceability requirements for fresh fruit and vegetables, meat and meat products in Germany

Oliver Thelen

QS Qualität und Sicherheit GmbH, Bonn/Germany



Traceability of Agricultural Produce
UNECE Conference, 3 November 2015
Geneva, Switzerland

Risk and responsibility

Food industry is susceptible to crises



Food industry is characterized by

- sensitive, delicate, fragile, susceptible, unstable products
- infinite mass of products
- uncountable businesses, heterogeneous operating structures



Food industry

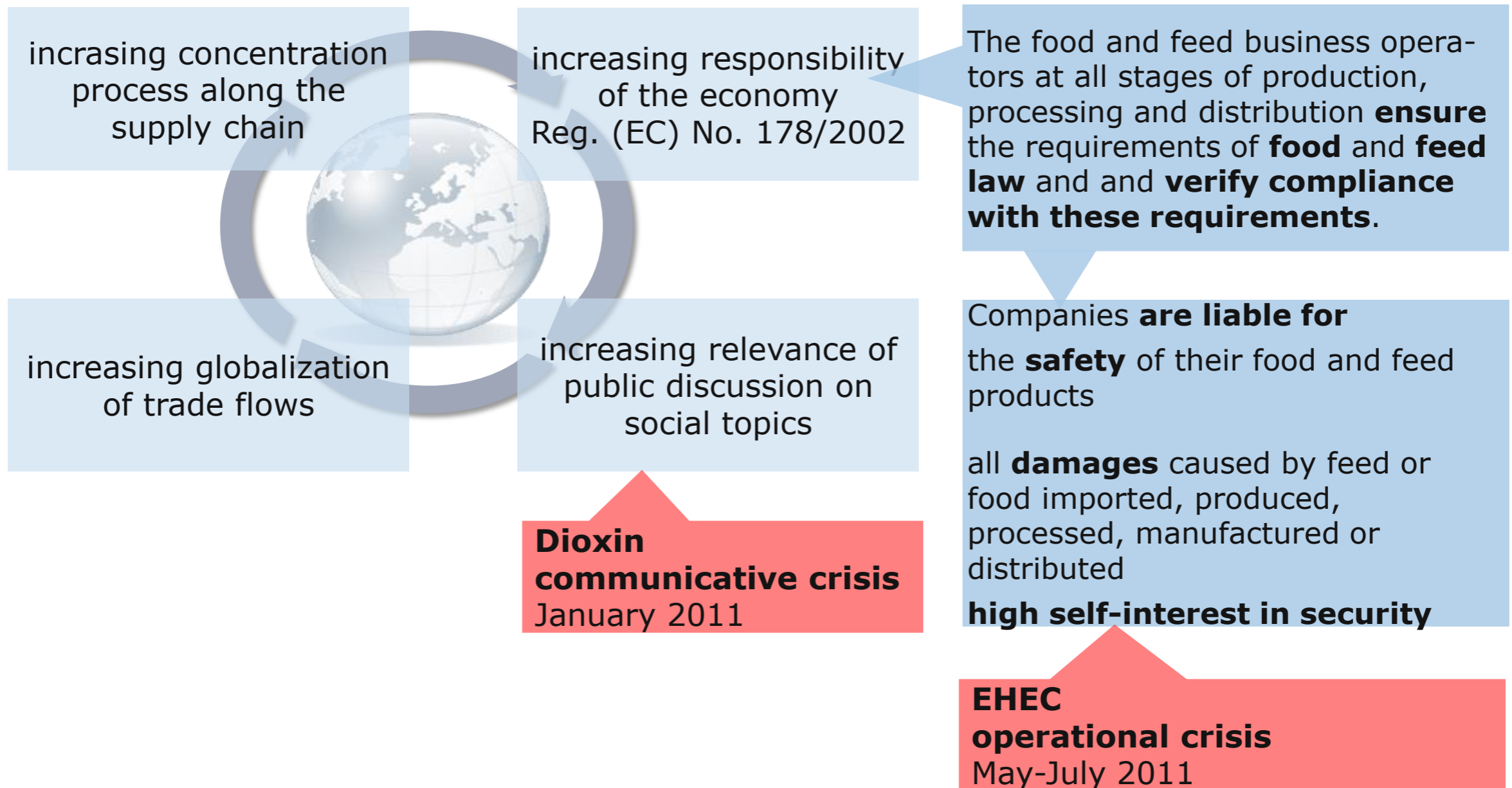
- supplies with agricultural produce the total population, including the weak (elderly, children, sick people)
- penetrates with agricultural produce into their private sphere
- is constantly faced with widespread scepticism in the public
- has to deal with a weak public knowledge about products, processing and marketing of agricultural produce



Particular risk and a special responsibility of the food industry!

Risk and responsibility

Increasing responsibility of the food industry



Self-assessment

Important role in the system of consumer health protection

System of consumer health protection

Official control
(authorities)

Self-assessment
(food industry)



417 district veterinary offices
supervise food safety regulations

- in the system of consumer health protection equivalent to official control
- since regulation (EC) No. 178/2002 applicable law



methodical, systematic
quality assurance
additional safeguarding
through QS certification

Quality Assurance. **From farm to shop.**

Quality assurance: the QS idea

Process-oriented quality assurance – across all stages



involving pre- and downstream stages of production and marketing, borne by the food industry, communicated to the consumer

- using short communication channels
- building mutual trust
- establishing a common understanding
- pursuing common goals
- facing crises together
- gaining credibility of the businesses

Quality Assurance. From farm to shop.

Quality assurance: the QS idea

Process-oriented quality assurance – across all stages



Hygiene control temperature registration **sampling plans** HACCP
labelling of allergenic substances recipes **animal welfare**
salmonella reduction plan **animal labelling** animal health **veterinary**
drugs salmonella monitoring **feed medication** raw materials **mix**
protocols contamination matrix



Quality Assurance. **From farm to shop.**

Quality assurance: the QS idea

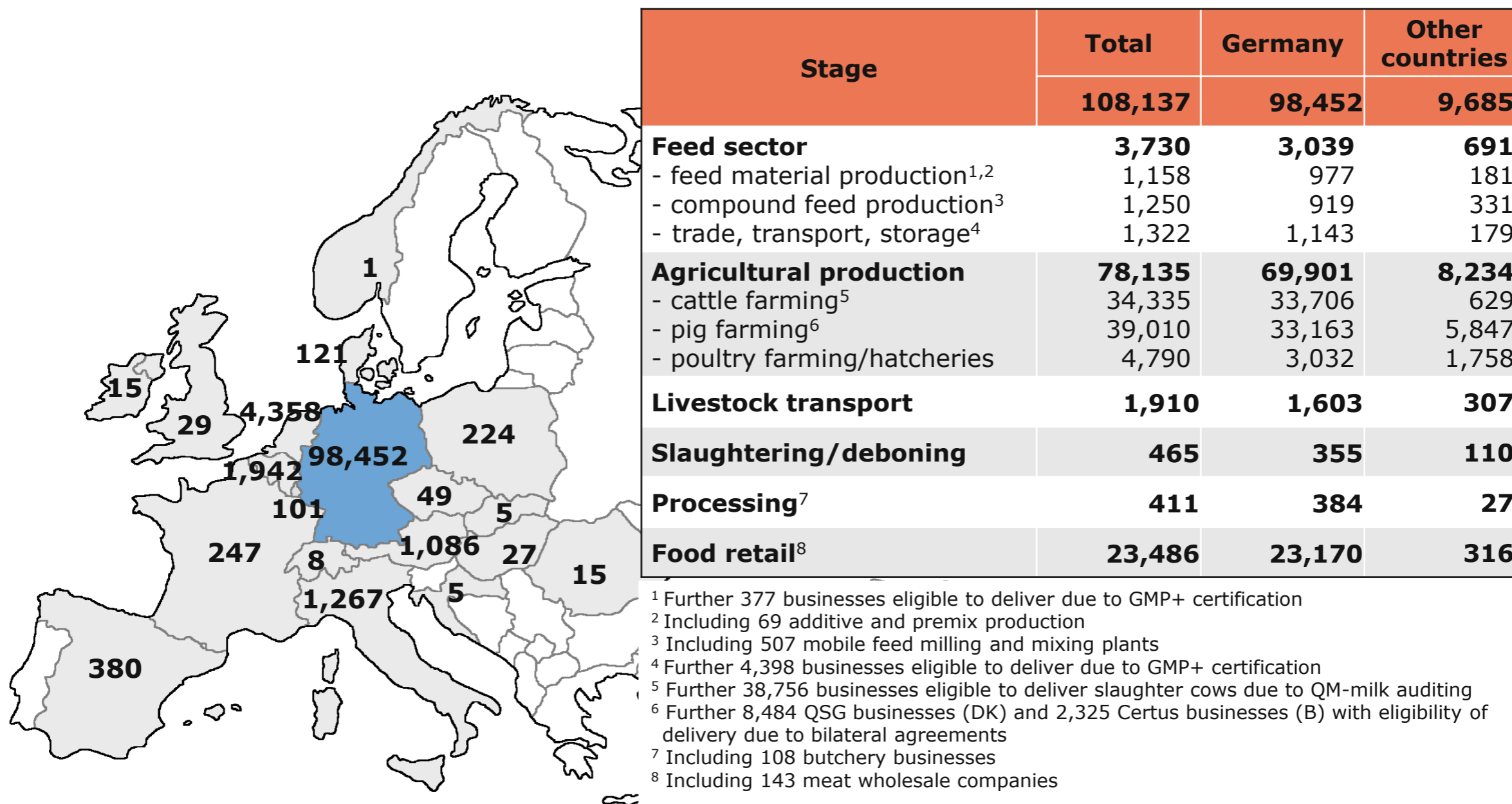
Process-oriented quality assurance – across all stages



Labelling self assessment **hygiene** trainings **incoming goods**
inspection traceability **storage and transport conditions** plant
 protection **fertilisation** usage of authorized agents **exceedance of**
maximum residue levels

Scheme participation

Focus on German consumer, international relevance



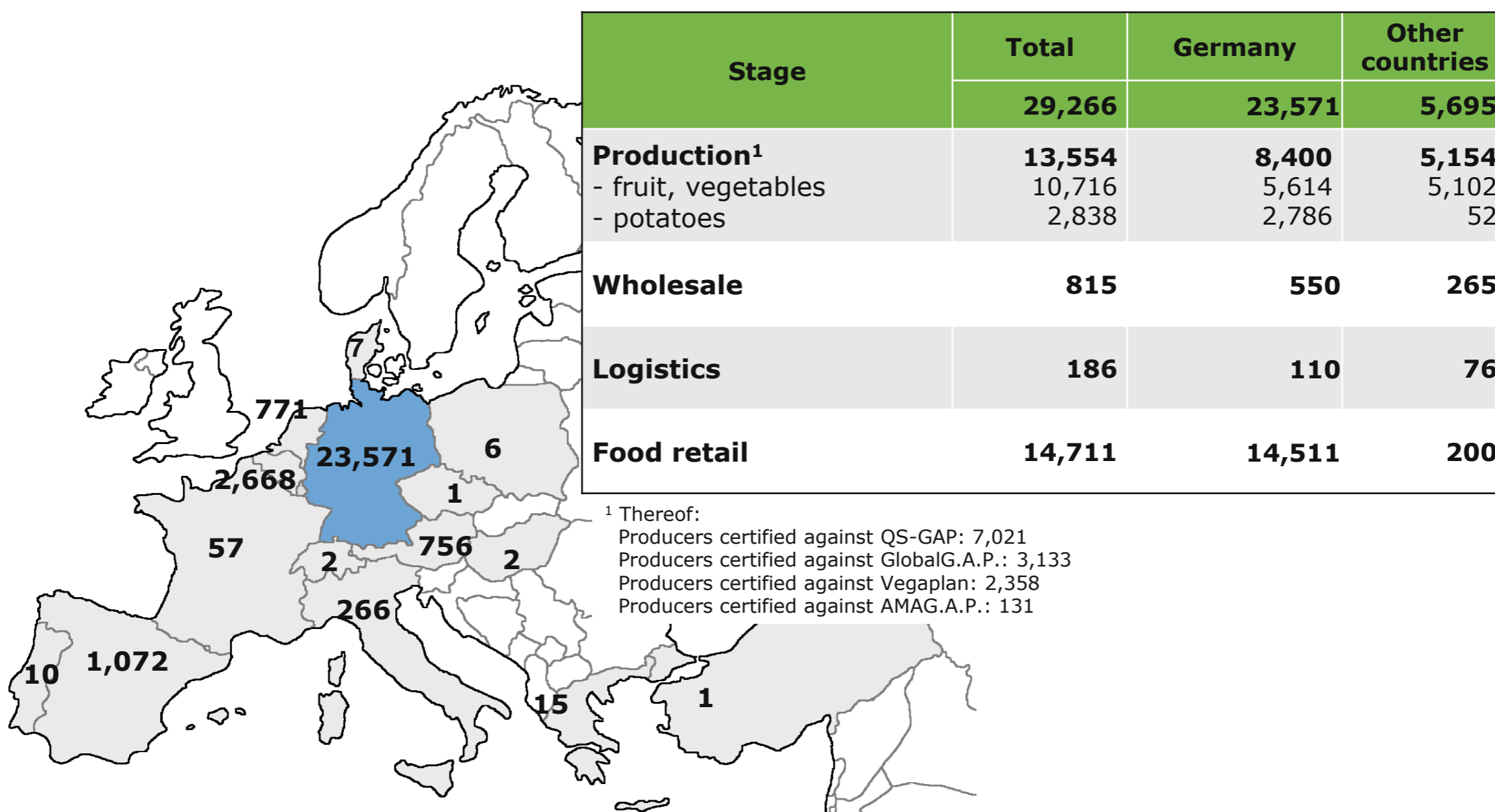
Status: October 01, 2015



Quality Assurance. From farm to shop.

Scheme participation

Focus on German consumer, international relevance



Stage	Total	Germany	Other countries
	29,266	23,571	5,695
Production¹	13,554	8,400	5,154
- fruit, vegetables	10,716	5,614	5,102
- potatoes	2,838	2,786	52
Wholesale	815	550	265
Logistics	186	110	76
Food retail	14,711	14,511	200

¹ Thereof:
 Producers certified against QS-GAP: 7,021
 Producers certified against GlobalG.A.P.: 3,133
 Producers certified against Vegaplan: 2,358
 Producers certified against AMAG.A.P.: 131

Status: October 01, 2015

Quality Assurance. From farm to shop.

QS in food retail

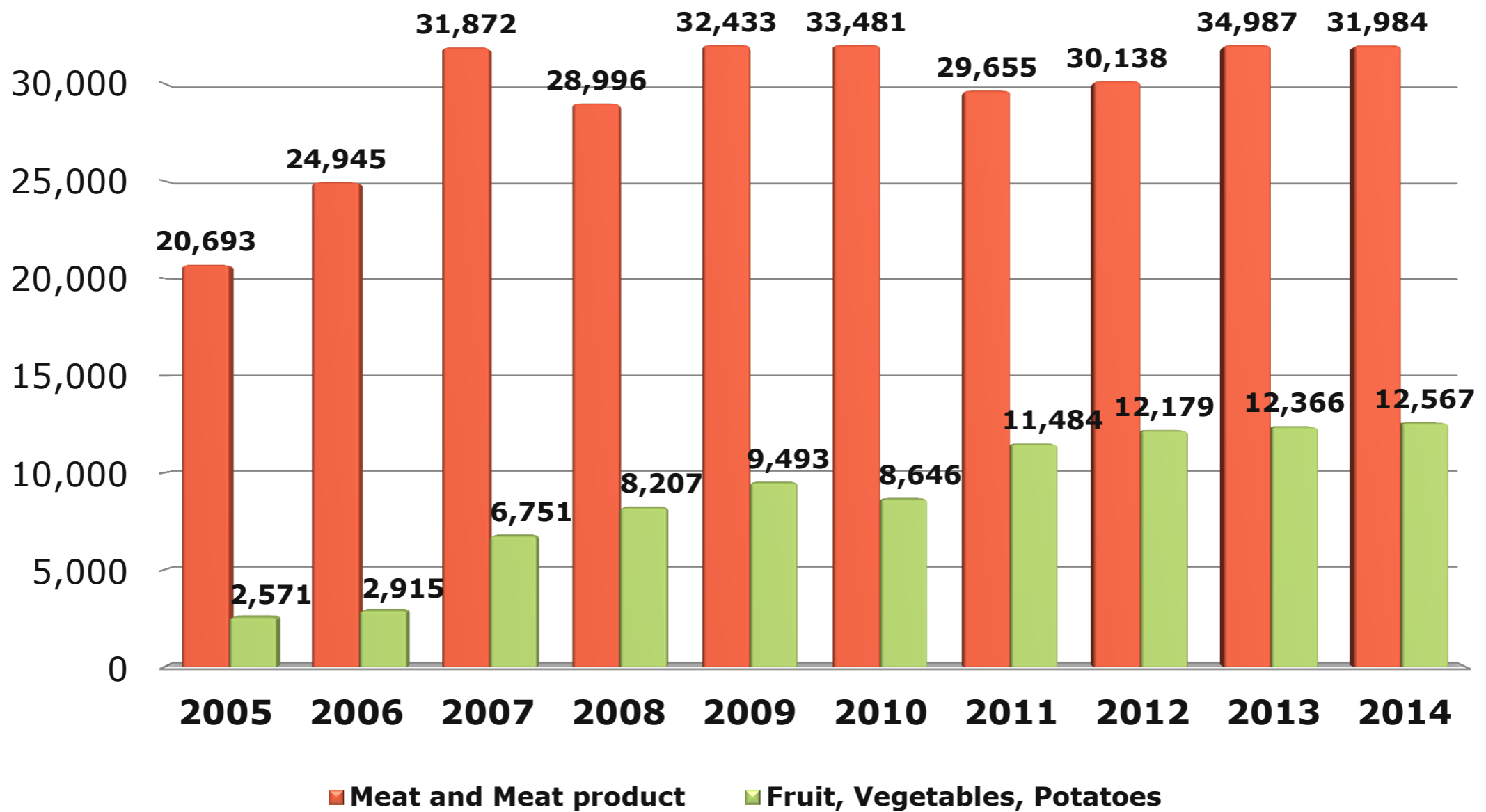
Significant role in the implementation of new requirements

 <p>QS – Ihr Prüfsystem für Lebensmittel</p>			Vion Food Group	
				B+C Tönnies
				PHW-Gruppe (Wiesenhof)
				Westfleisch
				Edeka Fleischwerke
				Wilhelm Brandenburg
				Zur Mühlen Gruppe
				Stolle Gruppe
				Sprehe Gruppe
				Danish Crown
			Gausepohl	
			Müller Gruppe	



Quality Assurance. From farm to shop.

Closely controlled QS-audits 2005 - 2014



Process controls take precedence over final product controls

Three levels of control to ensure compliance with QS requirements

SIKS – Integrity program

random sample audits

traceability checks

cooperation audits
with certification body

Laboratory perfor-
mance assessment

Independent Inspections and laboratory analysis

QS-approved certification bodies
(accredited according to EN45011)

QS-approved laboratories
(accredited according to EN17025)

Internal self assessment and documentation
company-specific self-control systems based on the QS guidelines

QS scheme Manual – guidelines, checklists



Quality Assurance. **From farm to shop.**

European traceability requirements

Regulation (EC) No. 178/2002, Article 18



Food and feed business operators shall be able to identify any person from whom they have been supplied with a food, a feed, a food-producing animal, or any substance intended to be, or expected to be, incorporated into a food or feed.

Food and feed business operators shall have in place systems and procedures to identify the other businesses to which their products have been supplied. This information shall be made available to the competent authorities on demand.

Food or feed which is placed on the market or is likely to be placed on the market in the Community shall be adequately labelled or identified to facilitate its traceability, through relevant documentation or information in accordance with the relevant requirements of more specific provisions.

Traceability requirements in the QS scheme

Traceability from farm to shop



- Documentation of flow of goods
 - scheduled and incoming goods shipment receive lot number/ID.
 - relevant lot number is noted on corresponding accompanying documents (e.g. dispatch notification/fax of supplier, stock record, quality records, delivery note/packing slip, invoice to the customers, bill for the supplier)
 - relevant lot number must remain with the goods from the receipt until selling to the customers (Guideline Wholesale)
- Traceability
 - scheme participants must establish traceability systems and processes in accordance with Regulation (EC) No. 178/2002
 - information on traceability must be available to QS within 24 hours
 - internal traceability processes ensure that information can be compiled within four hours

Traceability requirements in the QS scheme

Traceability from farm to shop



- Relevant customer and supplier information:
 - Name, address and telephone number
 - QS ID and/or location number
 - Type and quantity of delivered products
 - Delivery data and/or slaughtering data (slaughtering date only relevant for the slaughtering/deboning stage)
 - Batch and/or lot number (if issued during the production process)

Information on customers/supplier										
company:				QS-Id.:		legal representative:				
date:										
Name customer	Street customer	Postal code customer	City customer	Telephon number customer	QS-Id. or location number or VVVO-number	Name of the delivered product	Amount of the delivered product	Deliver y date	Charge- or batchnumber of the product	Specific description



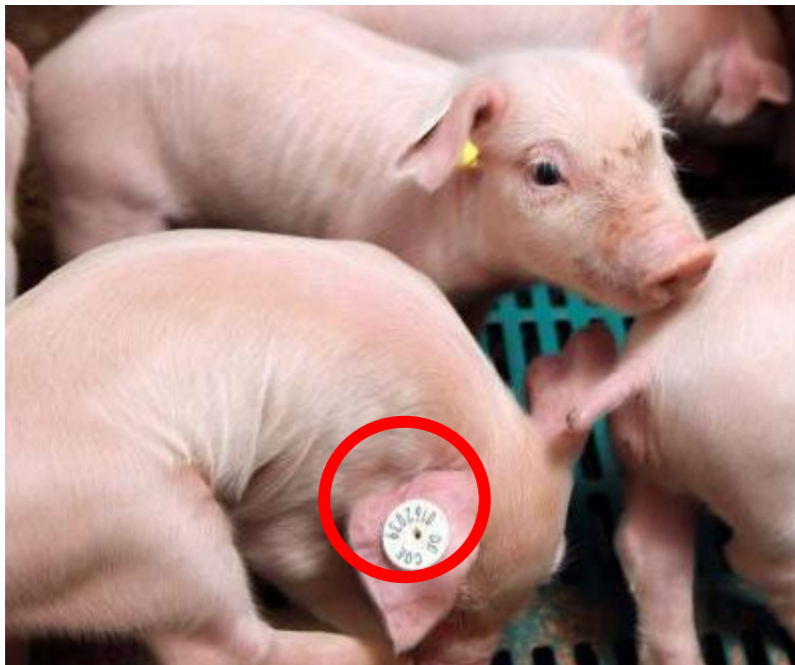
Quality Assurance. From farm to shop.

Accurate identification from farm to shop

Identification of livestock



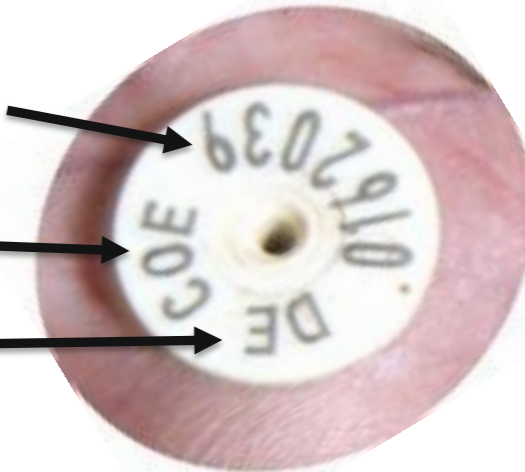
- Extract from QS guideline pig farming:
Farmers must mark all pigs with a permanent mark from the responsible authority: this should be completed at the weaning stage at the latest.



Last 7 digits of company/location number

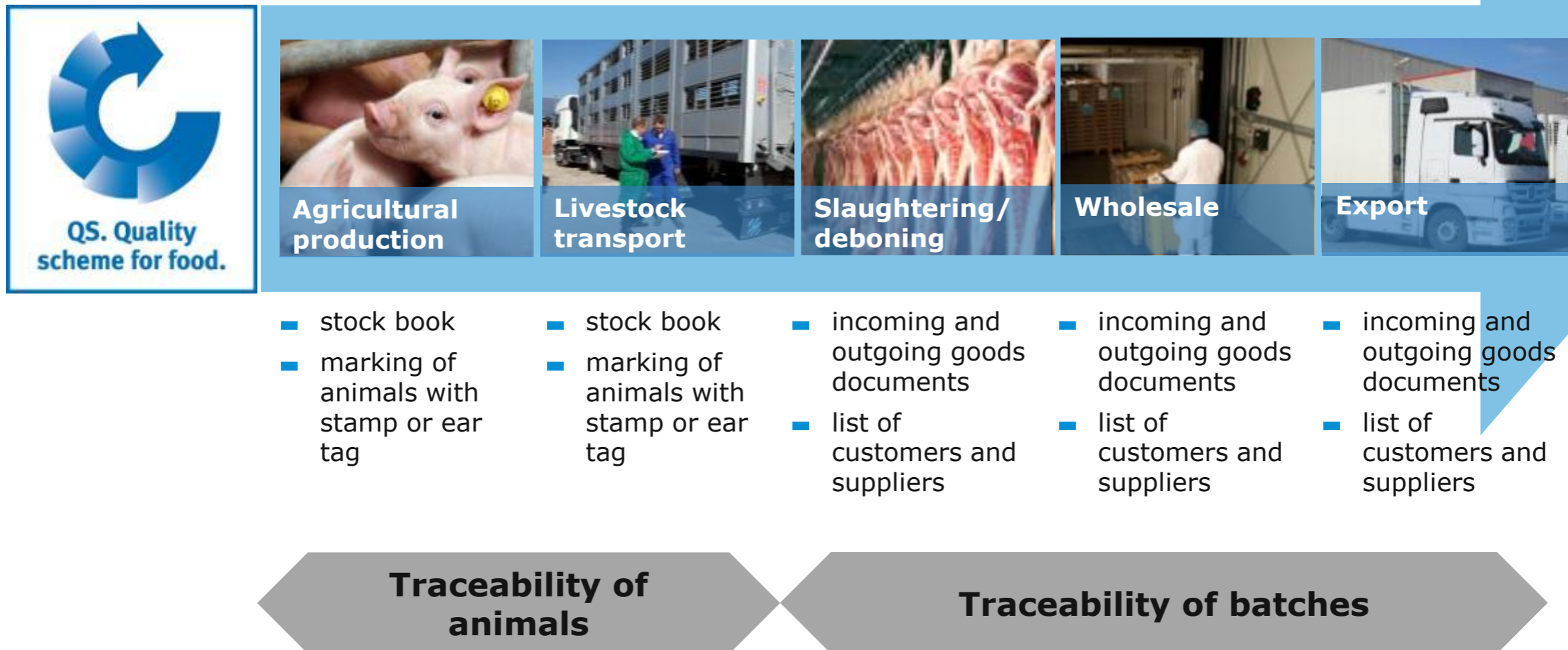
Rural district

Country



Accurate identification from farm to shop

Systematic traceability of animals/meat



Accurate identification from farm to shop

Stricter traceability requirements for feed producers since 2013



- Dioxin incident in early 2011 led to stricter traceability requirements within the QS scheme
- Requirement „Inclusion of location numbers“ since January 2013:

The location numbers must be recorded and marked in case of direct deliveries of bulk compound feed to agricultural businesses

- Farmer transfers number (s) and checks regularly if allocation is correct
- Feed distributor asks about the number actively and marks number (s) on the bill of delivery/invoice



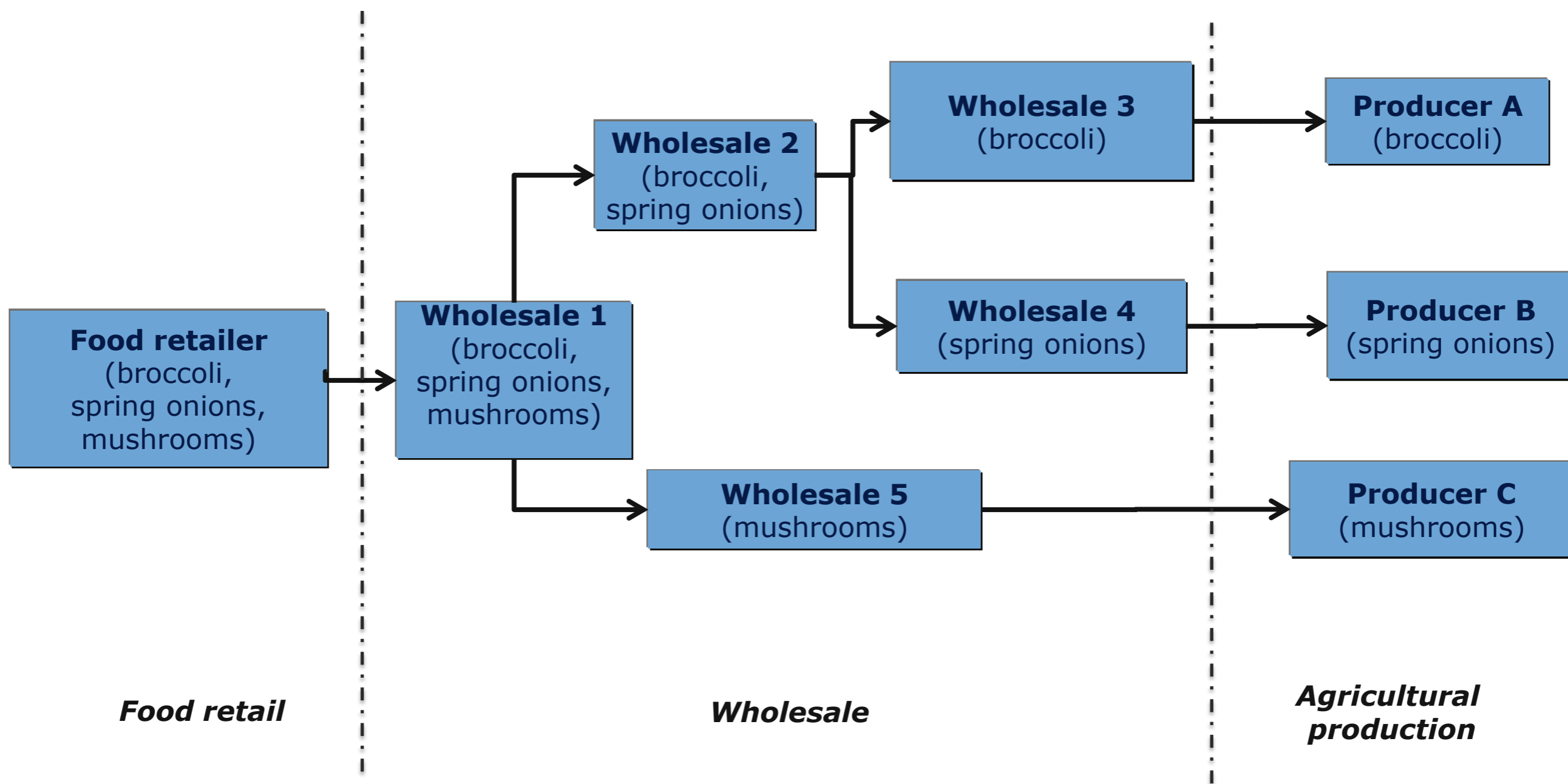
improves traceability even more and helps tracking supply routes (e.g. from potentially defective batches in case of incidents)



Quality Assurance. From farm to shop.

Frequent traceability checks

Complex flow of goods



Accurate identification from farm to shop

Identification of fruit, vegetables and potatoes



Delivery bill (Producer)

1992 D - 48889 Kartin D - 47999 Golden / Port	
Champ. braun, 4x350g schw. Schale, unfoliert, Multikiste	
NVE	3 40 19923 000024816 8
EAN	Menge (Stk.)
040 19923 02444 0	69
Waren-Eingang	Quellenreferenz
02.06.2009	4019923500029
Charge	Bruttogewicht
0000011396	115,575 kg
 <small>(02)94019923004440(30)1401992300029(37)0000</small>	
 <small>(338)011558(15)000011396</small>	
 <small>(00) 340199230000248168</small>	

Delivery bill (Wholesale)

Art. Nr.	Artikelbezeichnung	Kolli
ILN-Nummer: 4388200674761		
Bestellung per Fax am 30.05.09		
Bestellnummer:530034		
Auftragsannahme:Michael Raeth		
1444	Champ.weiss,Riesen,4x350g "QS" DE	15
1484	Champ.4x350g,mittel,weiss,05 DE	80
2432	Champ.4x350g,mittel,braun,05 DE	80
4418	Champ.4x175g,weiss,Mini,05 DE	25
4418	Champ.4x175g,weiss,Mini,05 DE	25
4418	Champ.4x175g,weiss,Mini,05 DE	25
6021	Champ.braun,6x200g geschn. QS NL	2

Retoure 3 Schale Austausch für 250g

Delivery bill (Retail warehouse)

Art. Nr.	Artikelbezeichnung	Kolli
250G SL TOMATE CHERRY BIO	++L REWE BIO	1 H/S
340G BT BANANE BABY	++L M CRI	
200G NE KNOBLAUCH BIO	++L REWE BIO	1 ARG
250G SL TOMATE CHERRY ROMA BI	++L REWE BIO	2 ESP
ST PP AUBERGINE BIO	++L REWE BIO	2 NLD
600G SL PILZ CHAMPIGNON WEISS	++L REWE	1 DEU
175G SL PILZ CHAMPIGNON MINI	++L REWE	1 DEU

Customer receipt (Food retailer)

REWE	
Murzerstrasse 103-105	
53175 Bonn-Plittersdorf	
Steuer.Nr.: 43 226 70699	
CHAMPIGN. BRAUN	2.39 7
CHICOREE REWE	1.29 7
SPINAT	2.99 7
SLAWE	8.67 *
Sie erhalten 1 Treuepunkt(e)	
GEGEBEN BAR	10.00
RÜCKGELD	3.33
MwST 7.00%	0.44 Netto 6.23
SLAWE MwST	0.44 Netto 6.23
Positionen: 3	
03.06.2009 14:21 2946 222222 3 0061	



Frequent traceability checks

Reaction rate





Quality Assurance. **From farm to shop.**

Summary

Traceability with the help of quality assurance across all stages

- Particular risk and increasing responsibility of the food industry
- Self-assessment of food industry in the system of consumer health protection equivalent to official control, since regulation (EC) No. 178/2002 applicable law
- The QS idea: process-oriented quality assurance across all stages with focus on the German consumer
- European traceability requirements according according to Reg. (EC) No. 178/2002
- Traceability requirements in the QS scheme:
 - documentation of flow of goods,
 - participants must establish traceability systems and processes,
 - definition of relevant customer and supplier information,
 - accurate identification of livestock,
 - systematic traceability of animals/meat,
 - stricter traceability requirements for feed producers since 2013,
 - accurate identification of fruit, vegetables and potatoes,
- Conduction of frequent traceability checks within integrity program



Quality Assurance. **From farm to shop.**



Oliver Thelen

QS Qualität und Sicherheit GmbH

Phone: +49 (0) 228 35068 130

Email: oliver.thelen@q-s.de

www.q-s.de

Thank you for your attention.

