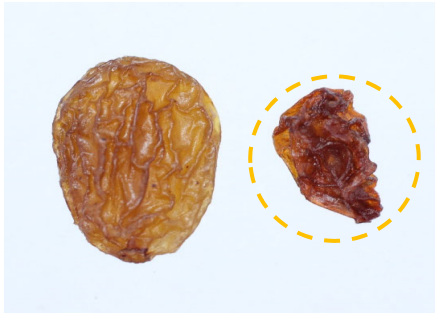


DEFINITION & CLASSIFICATION



The UNECE standard applies to seed-bearing and seedless dried grapes from varieties (cultivars) grown from *Vitis vinifera* L. intended for direct consumption. Dried grapes are classified into the following **three classes: Extra Class, Class I and Class II**. The classification is determined in accordance with the defects allowed in the Standard's section "IV, Provisions concerning tolerances".

QUALITY DEFECTS



UNDEVELOPED



MOULD



DAMAGED BY PESTS



MECHANICAL DAMAGE



BERRIES HAVING SEEDS IN
SEEDLESS TYPES



BERRIES WITH CAPSTEM
ATTACHED



SUGARED



PIECES OF STEM/MINERAL IMPURITIES/EXTRANEOUS VEGETABLE
MATERIALS

NOTES:

Undeveloped: Side by side comparison developed and undeveloped berries.

Mould: Due to small size of the berries, to detect mould, rub the berry on a white surface, you will see a black track if mould is present.

Berries with capstem attached: The tolerance for capstems applies only to dried grapes presented without capstems.