



REPUBLIC OF TURKEY
MINISTRY OF ECONOMY

Quality Inspections at Export Stage for Dry and Dried Produce

the Turkish Practice

Emre Kırıcıoğlu
Inspector

Ministry of Economy
General Directorate of Product Safety & Inspection
Department of Food & Agriculture

Agri-Food Supply Chains in Cross-Border Trade of Nuts and Dried Fruit

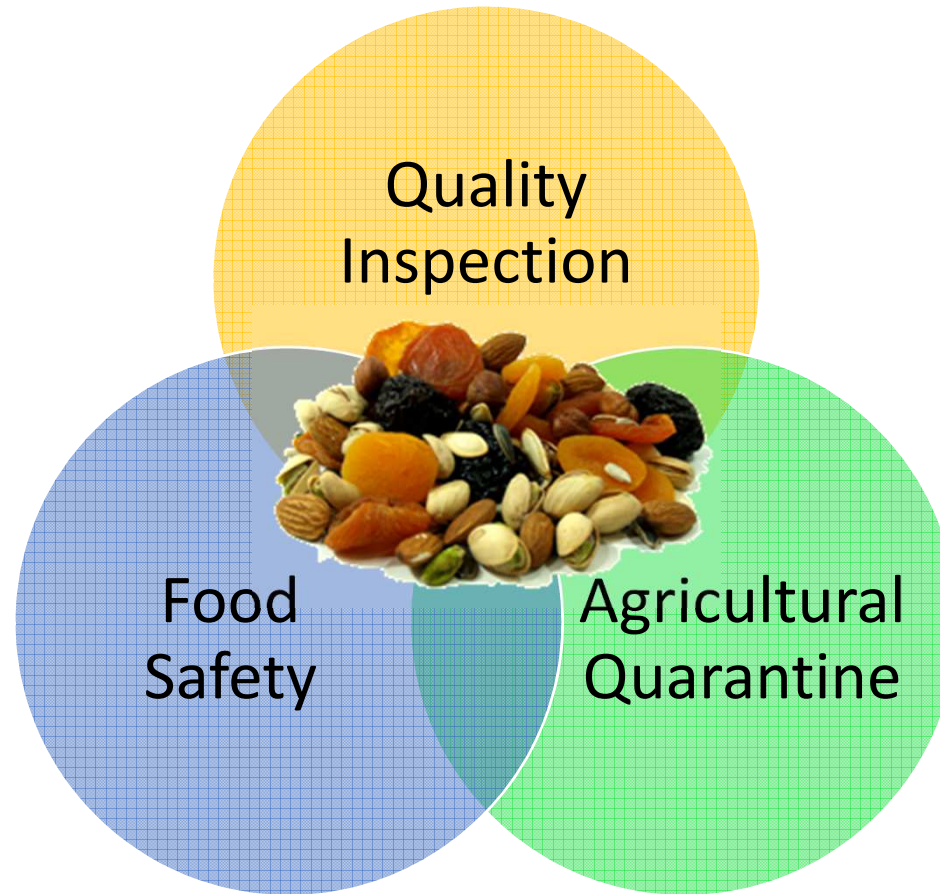
1 - 3 July 2015

Izmir, Turkey



REPUBLIC OF TURKEY
MINISTRY OF ECONOMY

Nature of the Inspections





REPUBLIC OF TURKEY
MINISTRY OF ECONOMY

Structure of the Administration System of Inspection Authorities



Inspection of the Dry
& Dried Produce



MoFAL



MoE



Food Safety



Plant
Protection/Quarantine

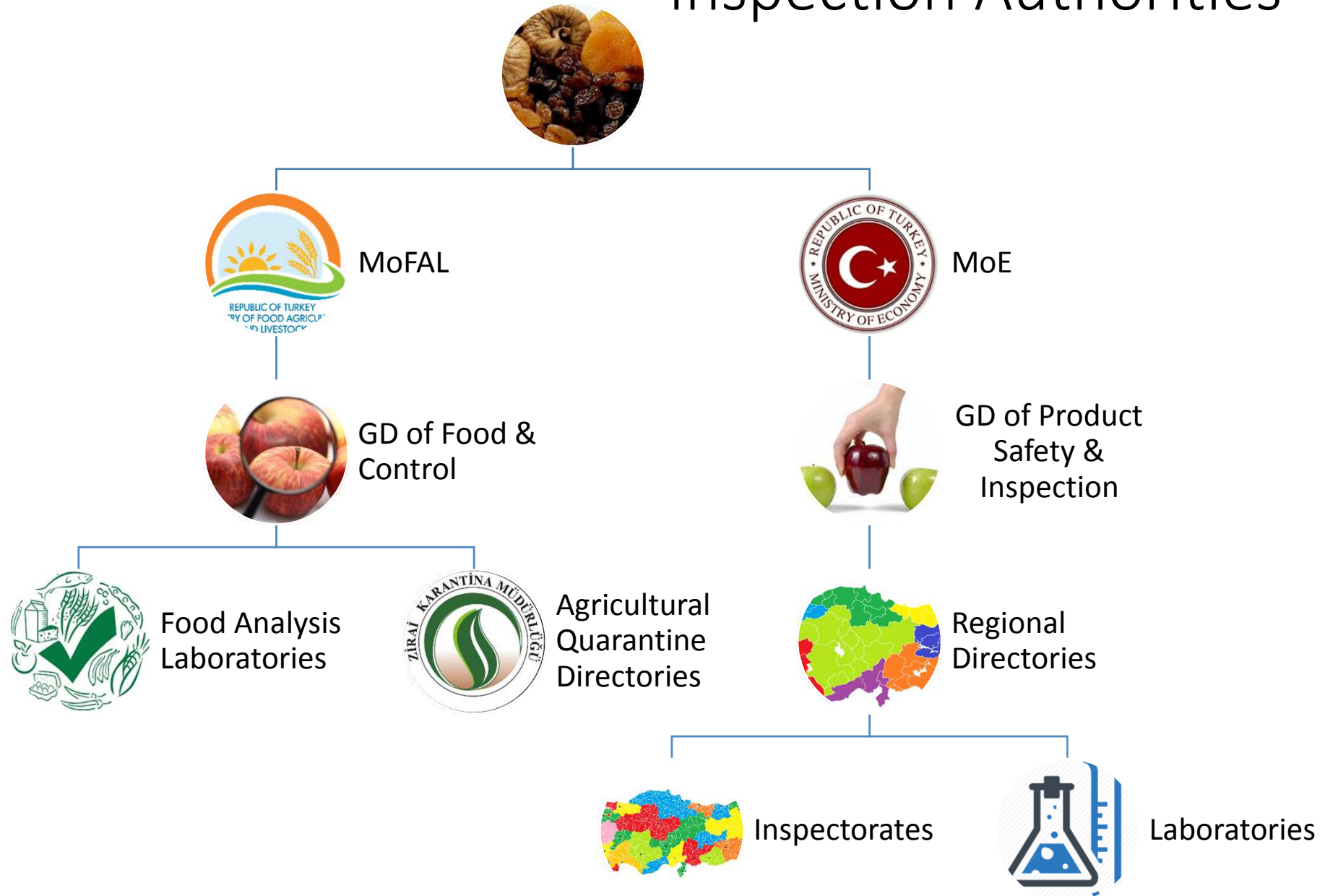


Quality Inspection



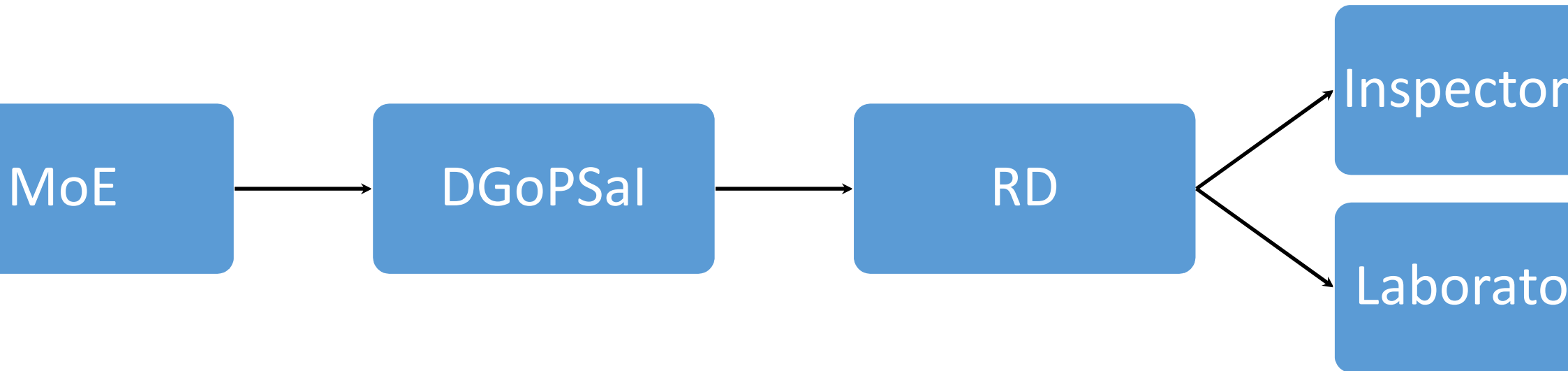
REPUBLIC OF TURKEY
MINISTRY OF ECONOMY

Structure of the Administration System Inspection Authorities





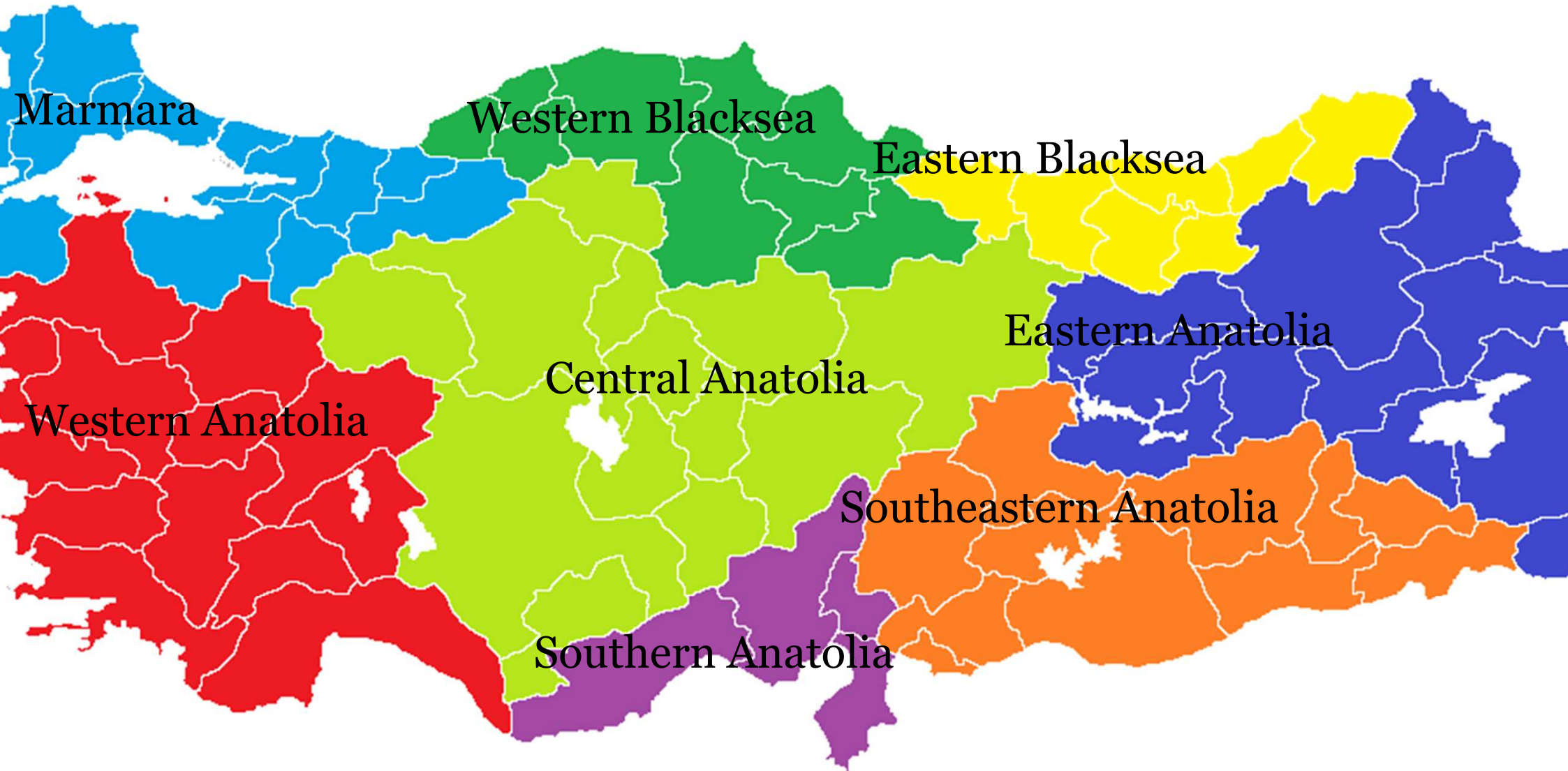
Institutional Structring of MoE





REPUBLIC OF TURKEY
MINISTRY OF ECONOMY

Regional Directorates of MoE



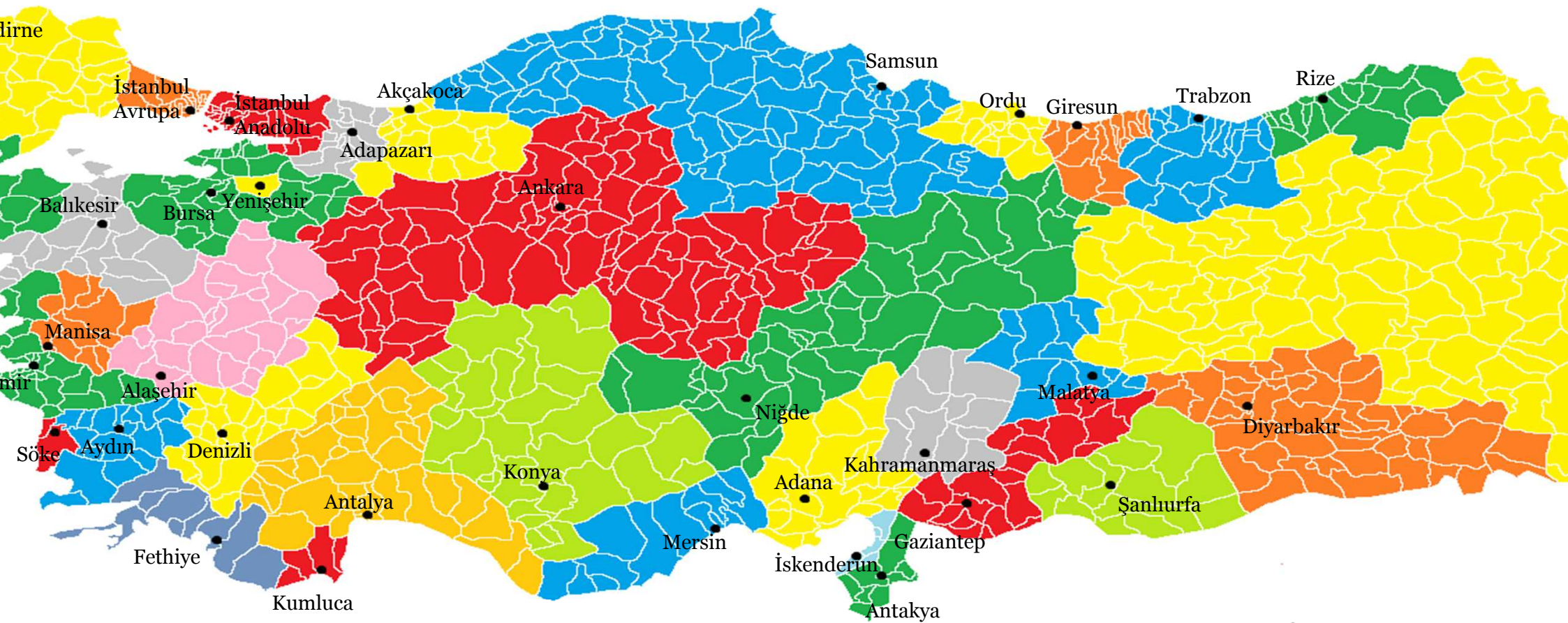


REPUBLIC OF TURKEY
MINISTRY OF ECONOMY

Regional Directorates of MoE



35 Inspectorates





REPUBLIC OF TURKEY
MINISTRY OF ECONOMY

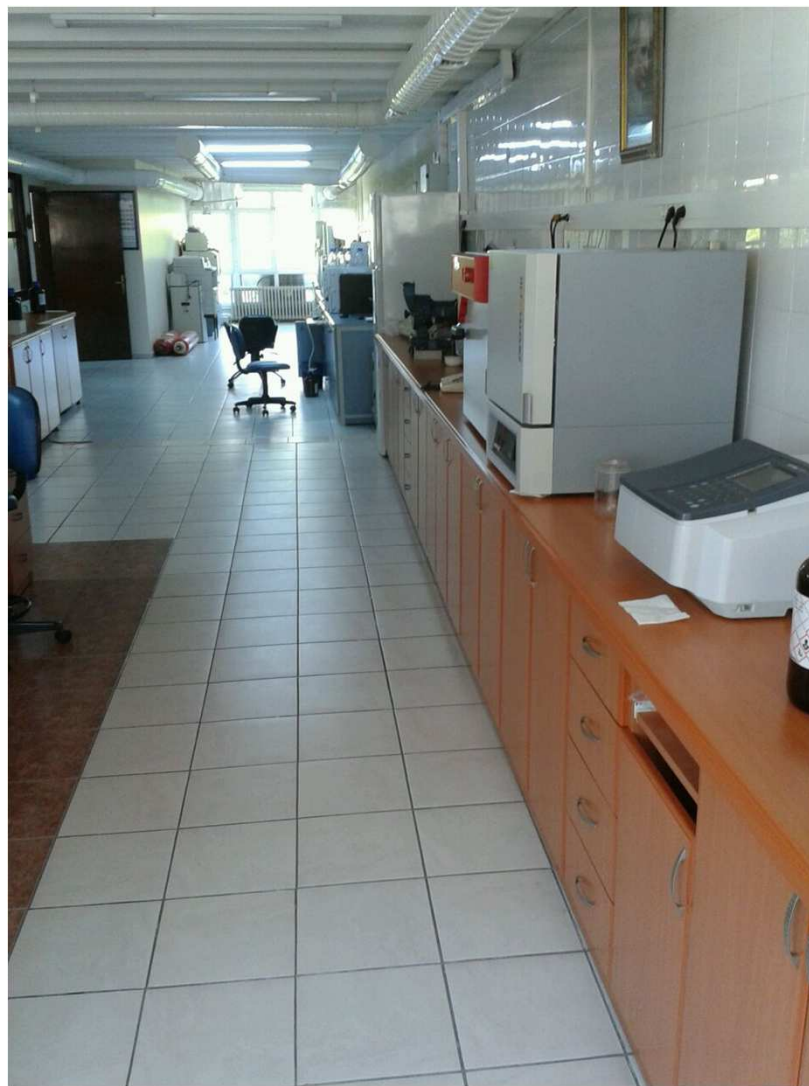
Laboratories





REPUBLIC OF TURKEY
MINISTRY OF ECONOMY

Laboratories





Human Resources

Regional Directorates of UFT	Inspector	Trainee Inspector	Engineer	Chemist
RD of Marmara	47	15	1	2
RD of Western Anatolia	50	10	2	3
RD of Western Black Sea	4	-	-	-
RD of Eastern Black Sea	6	-	1	1
RD of Central Anatolia	15	-	-	-
RD of Southern Anatolia	37	3	4	2
RD of Eastern Anatolia	3	-	-	-
RD of Southeastern Anatolia	12	7	2	1
Total	174	45	9	9



Infrastructure

- Inspectorates

- IT

- Portable Computers
 - 3G modems



- Van

- Inventory
 - Contracted

- Laboratories

- Devices etc.





Authorization of the Facilities

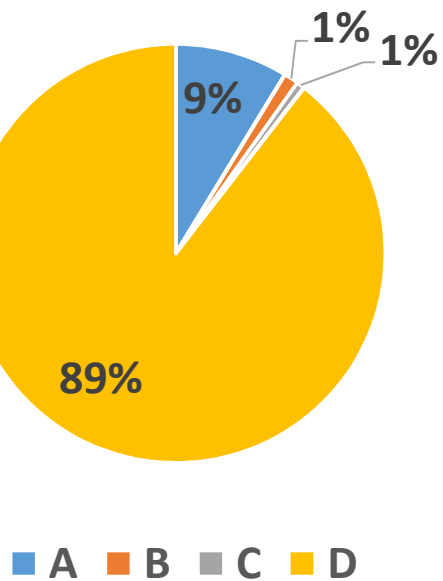
Registered Trade Mark	Quality System Certificate	Facility with laboratory (if necessary) & machinery	Internal Inspector	Number of Authorized Facilities
A				267
B				35
C				19
D				2744

Less nu
of inspe





Authorization of Facilities



The risk analysis is take into account the following criteria:

- Product,
- Season,
- Exporters Class (A, B, C, D)
- Past performance and processing capacity of exporters,
- Notification from importer countries



Legal Framework

- on the Regime Regarding Technical Regulations

- on the Regime Regarding Technical Regulations

- of Commercial Quality Inspection of Certain Agricultural Produces at Foreign Trade (2015/21)

- of Assessment of Risk Based Commercial Quality Inspection of Certain Agricultural Produces (2015/22)

- 81 Turkish Standards



REPUBLIC OF TURKEY
MINISTRY OF ECONOMY

Scope of Commercial Quality Inspections



- Fresh Fruits & Vegetable



- Dry & Dried Produces



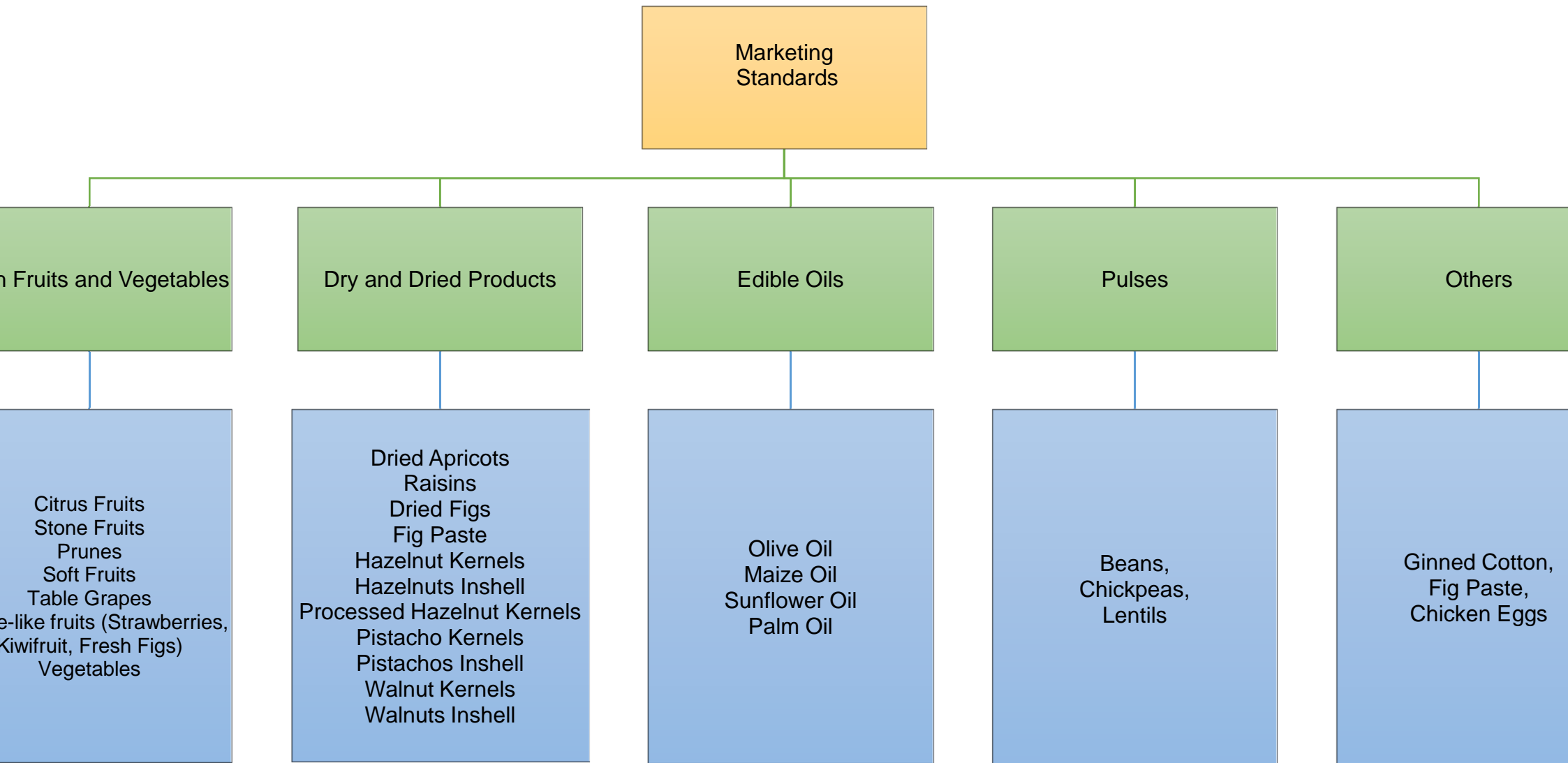
- Pulses & Beans



- Edible Vegetable Oils



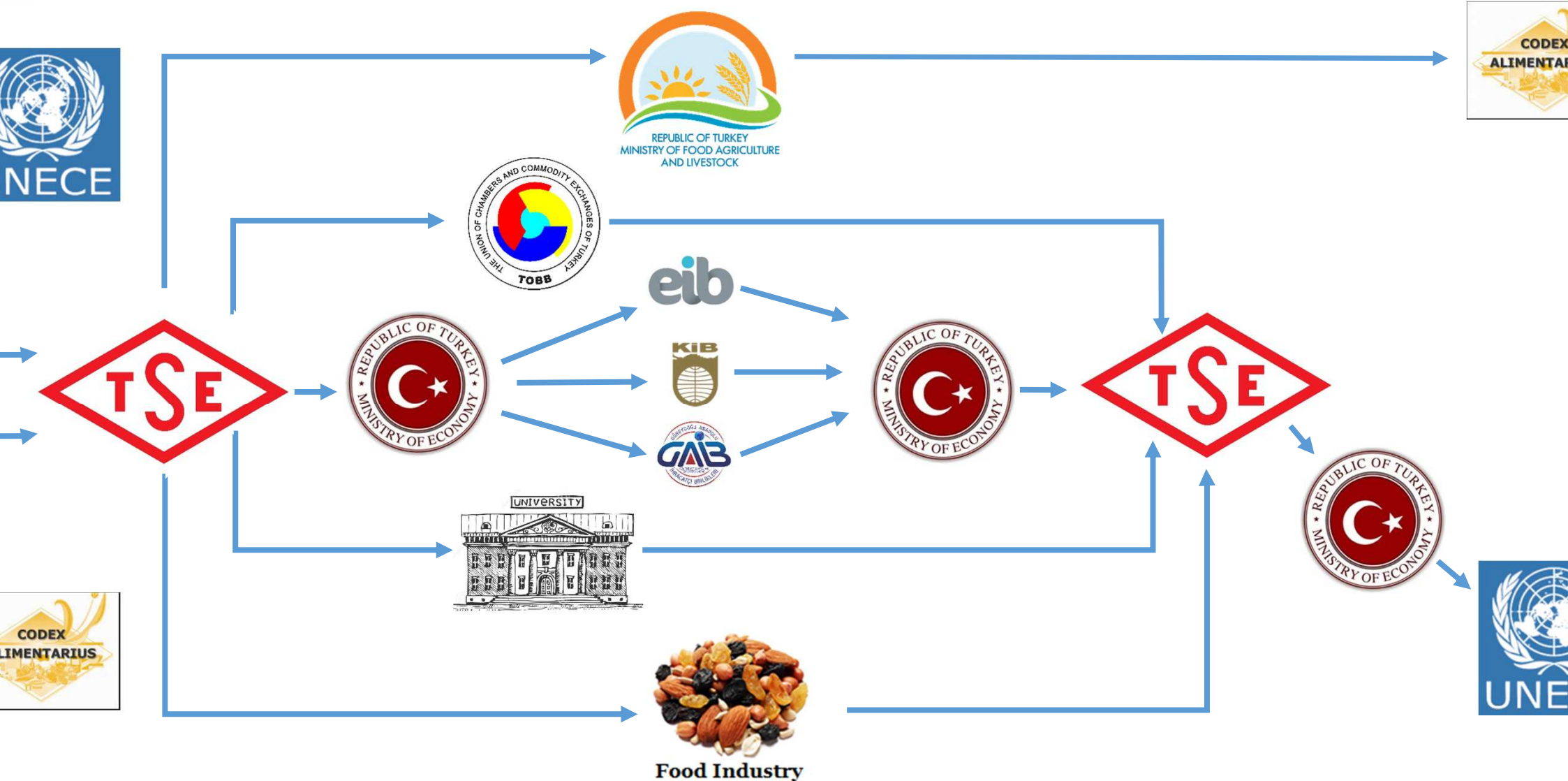
Commercial Quality Standards





REPUBLIC OF TURKEY
MINISTRY OF ECONOMY

Adoption of National Food Standards





REPUBLIC OF TURKEY
MINISTRY OF ECONOMY

TS – UNECE Standards Comparing





TS – UNECE Standards Comparing

TS 541					UNECE DDP-14			
Tablo 2 - Kuru incirin sınıf toleransları					A. Quality tolerances			
Özellikler	Tolerans (1000 g'lık bir birimde bulunmasına izin verilen özüllü kuru incirin kütlece yüzdesi)				Permitted defect	Tolerances allowed (percentage of defective fruit, by weight in a minimum sample unit of 1000g)		
	Ekstra	Sınıf I	Sınıf II	Endüstriyel		Extra	Class I	Class II
Hasarlı, en çok	9,0	12,0	16,0	Serbest	Total tolerance	10	15	30
Yanık, yırtık, yarık, veya tıllak, aşırı kuru ve diğer kusurlar, en çok	8,0	10,0	25,0	Serbest	(1) Damage by			
Yanık ve/veya tıllak, en çok	3,0	4,0	5,0	Serbest	(a) Insects	9	12	16
Yabancı madde, en çok	0,5	0,5	0,5	2,0	(b) Sunscald	8	10	25
Toplam tolerans, en çok	10,0	15,0	30,0	Serbest	(c) Split or torn			
					(d) Excessively dried			
					(e) Other similar defects			
					(2) Mouldy or rancid	3	4	5
					(3) Foreign matter	0.5	0.5	0.5



TS – UNECE Standards Comparing

TS 541

Elge 1 - 1 kg'daki kuru incir sayısına göre boy özellikleri

Boy numarası	1 kg'daki meyve sayısı
1	40'a kadar
2	41 - 45
3	46 - 50
4	51 - 55
5	56 - 60
6	61 - 65
7	66 - 70
8	71 - 80
9	81 - 100
10	101 - 120
11	121 ve üzeri

UNECE DDP-14

III. PROVISIONS CONCERNING SIZING

Sizing is determined by the number of fruit per kilogramme. The number of fruits in each shown in the following table: ⁵

Size Number	Number of fruit per kilogramme
1	Up to - 40
2	41 - 45
3	46 - 50
4	51 - 55
5	56 - 60
6	61 - 65
7	66 - 70
8	71 - 80
9	81 - 100
10	101 - 120
11	121 and over



TS – UNECE Standards Comparing

TS 541		UNECE DDP-14	
Elge 3 - Kuru incirlerin boy toleransları		C. Size tolerances	
		Size tolerances of dried figs in a minimum sample of 1000 g.	
		<u>Size weight range in grammes between</u>	
Boy numarası	En küçük ve en büyük kuru incir kütlesi farkı, (g)	<u>Number</u>	<u>the largest and smallest f</u>
1 - 2	12	1 - 2	12
3 - 6	10	3 - 6	10
7 - 9	8	7 - 9	8
10 - 11	6	10 - 11	6

UNECE DDP – 14

Definition of Produce

- This standard applies to the figs dried from ripe fruits of cultivars grown from *Ficus carica domestica* L. and intended for direct consumption. It does not apply to dried figs intended for processing.





UNECE DDP – 14

Minimum requirements

- Intact





REPUBLIC OF TURKEY
MINISTRY OF ECONOMY

UNECE DDP – 14

Minimum requirements

- Sound



UNECE DDP – 14

Minimum requirements

- Free of abnormal external moisture
- Free of foreign smell and/or taste





REPUBLIC OF TURKEY
MINISTRY OF ECONOMY

UNECE DDP – 14

Minimum requirements

- Free of living insects or mites





REPUBLIC OF TURKEY
MINISTRY OF ECONOMY

UNECE DDP – 14

Minimum requirements

- Free of sunscald





REPUBLIC OF TURKEY
MINISTRY OF ECONOMY

UNECE DDP – 14

Minimum requirements

- Free of split & torn fruits





REPUBLIC OF TURKEY
MINISTRY OF ECONOMY

UNECE DDP – 14

Minimum requirements

- Free of visible foreign matter





REPUBLIC OF TURKEY
MINISTRY OF ECONOMY

UNECE DDP – 14

Minimum requirements

- Flour





UNECE DDP – 14

Minimum requirements

- Free of visible damage by insects, mites or other parasites (birds, rodents)





REPUBLIC OF TURKEY
MINISTRY OF ECONOMY

UNECE DDP – 14

Minimum requirements

- Free free of mould and fermentation;





UNECE DDP – 14

Minimum requirements

- Excessive Moisture





UNECE DDP – 14

Minimum requirements

- Excessively dry





REPUBLIC OF TURKEY
MINISTRY OF ECONOMY

UNECE DDP – 14

Minimum requirements

- Naturel dried figs





UNECE DDP – 14

Minimum requirements

- Figs treated with preservatives





UNECE DDP – 14

Minimum requirements

- Figs treated with additives (flour)





REPUBLIC OF TURKEY
MINISTRY OF ECONOMY

UNECE DDP – 14 Classification

- Extra Class





REPUBLIC OF TURKEY
MINISTRY OF ECONOMY

UNECE DDP – 14 Classification

Class I





REPUBLIC OF TURKEY
MINISTRY OF ECONOMY

UNECE DDP – 14 Classification

- Class II





UNECE DDP – 14

Sizing

Size Number	Number of fruits/kg
1	1 – 40
2	41 – 45
3	46 – 50
4	51 – 55
5	56 – 60
6	61 – 65
7	66 – 70
8	71 – 80
9	81 – 100
10	101 – 120
11	121 - +



UNECE DDP – 14 Tolerances

- Quality tolerances

Permitted defect	Tolerances allowed (percentage of defective fruit, by weight in a minimum sample unit of 1000 g)		
	Extra	Class I	Class II
Total tolerance	10	15	30
(1) Damage by			
(a) Insects	9	12	16
(b) Sunscald	8	10	25
(c) Split or torn			
(d) Excessively dried			
(e) Other similar defects			
(2) Mould or rancid	3	4	5
(3) Foreign matter	0,5	0,5	0,5



UNECE DDP – 14 Tolerances

- Size tolerances

Size	Number of fruit per kilogramme	The Weight Difference Between the Smallest & the largest (gr)	Size weight range grammes between the largest & smallest fig
1	up to 40	>20	12
2	41-45	17-29	
3	46-50	16-26	10
4	51-55	14-24	
5	56-60	12-22	
6	61-65	11-21	
7	66-70	11-19	
8	71-80	9-17	8
9	81-100	7-15	
10	101-120	6-12	
11	121 & over	<5	6



REPUBLIC OF TURKEY
MINISTRY OF ECONOMY

UNECE DDP – 14 uniformity

Not uniform by quality class



Not uniform by size





REPUBLIC OF TURKEY
MINISTRY OF ECONOMY

UNECE DDP – 14

Packaging & Presentation

Çukolat (Chocolate)





REPUBLIC OF TURKEY
MINISTRY OF ECONOMY

UNECE DDP – 14

Packaging & Presentation

- Turkish Delight





REPUBLIC OF TURKEY
MINISTRY OF ECONOMY

UNECE DDP – 14

Packaging & Presentation

- Layer





REPUBLIC OF TURKEY
MINISTRY OF ECONOMY

UNECE DDP – 14

Packaging & Presentation

- Pulled





REPUBLIC OF TURKEY
MINISTRY OF ECONOMY

UNECE DDP – 14

Packaging & Presentation

- Protoben





REPUBLIC OF TURKEY
MINISTRY OF ECONOMY

UNECE DDP – 14

Packaging & Presentation

- Lerida





REPUBLIC OF TURKEY
MINISTRY OF ECONOMY

UNECE DDP – 14

Packaging & Presentation

- Garland



UNECE DDP – 14

Packaging & Presentation

- Bařlama





REPUBLIC OF TURKEY
MINISTRY OF ECONOMY

UNECE DDP – 14 Marking





Inspection Procedure

- Sampling

Number of Packages	Number of packages to be sampling	Initial sample (gr)	Bulk Sample (gr)	Representative sample (gr)
1 - 100	5	2000	10000	$4 \times 1000 = 4000$
101 - 300	7	1500	10500	$4 \times 1000 = 4000$
301 - 500	9	1500	13500	$4 \times 1000 = 4000$
501- 1000	10	1000	10000	$4 \times 1000 = 4000$
1001 - +	15	1000	15000	$4 \times 1000 = 4000$



REPUBLIC OF TURKEY
MINISTRY OF ECONOMY

Inspection Procedure





over
potential