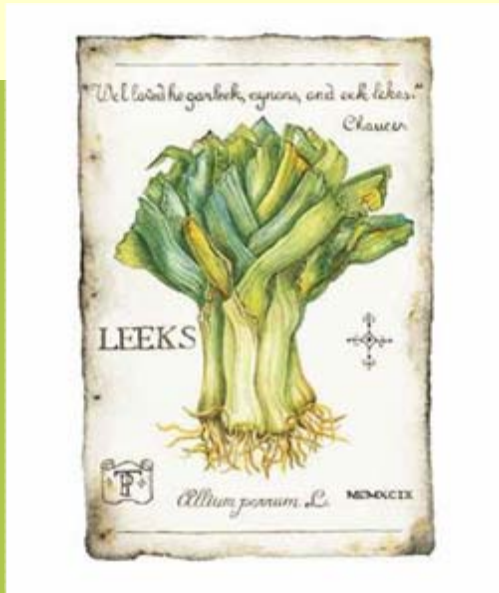


Dobrý deň !



Günter JESSL, Ministry for Agriculture, Forestry, Environment and Water Management

## Standard for Leeks



**UN/ECE STANDARD FFV-21**



lebensministerium.at

lebensministerium.at

lebensministerium.at

lebensministerium.at

lebensministerium.at

# I. DEFINITION OF PRODUCE



This standard applies to leeks of varieties (cultivars) grown from *Allium porrum* L. to be supplied fresh to the consumer, **leeks for industrial processing being excluded.**

**Synonym:** *Allium ampeloprasum* var. *porrum*

- **Wintertype** Harvested in late winter or early summer – directly seeded. (squat in shape, hardy)
- **Autumntype**  
(long shafted, half hardy or less)

# Wintertype (i.e. Austria)



# Autumntype (i.e. Turkey)



lebensministerium.at



## A. Minimum requirements



- intact (this requirement does not apply, however, to roots and ends of leaves which may be cut)
- sound; produce affected by rotting or deterioration such as to make it unfit for consumption is excluded
- clean, practically free of any visible foreign matter; however, the roots may have soil adhering to them
- fresh in appearance, with wilted or withered leaves removed

## A. Minimum requirements



- practically free from pests
- practically free from damage caused by pests
- not running to seed
- free of abnormal external moisture, i.e. adequately 'dried' if they have been washed
- free of any foreign smell and/or taste.

## A. Minimum requirements **intact**



Provision isn't valid for roots and tip end of leaves!  
When the leaves are cut, they must be neatly cut.

# A. Minimum requirements intact



Provision isn't valid for roots!



# A. Minimum requirements intact



poor trimming

# A. Minimum requirements **intact**



# A. Minimum requirements not **sound**



## A. Minimum requirements not **sound**



lebensministerium.at



# A. Minimum requirements not **clean**



# A. Minimum requirements not **clean**



# A. Minimum requirements not **clean**



**A. Minimum requirements**  
not free from damage caused by pests





## A. Minimum requirements

fresh in appearance, with wilted or withered leaves removed



withered leaves

# A. Minimum requirements not running to seed - flowerstem



# A. Minimum requirements

not running to seed - flowerstem



## Leeks – Flower stem

Flower stem extending slightly beyond the sheathed part as long as it remains pencil thick



provided that it is enclosed within the sheathed part

**A. Minimum requirements**  
not running to seed - flowerstem



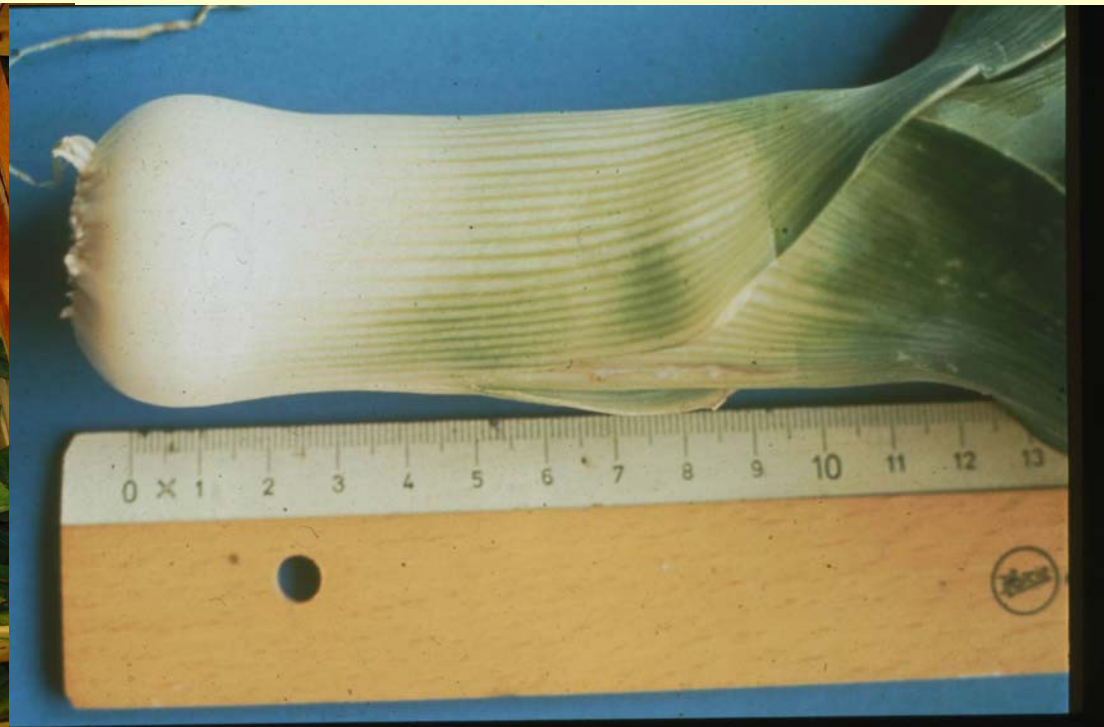
**Out of grade**

# A. Minimum requirements not running to seed - flower



## B. Classification **class 1**

white to greenish white



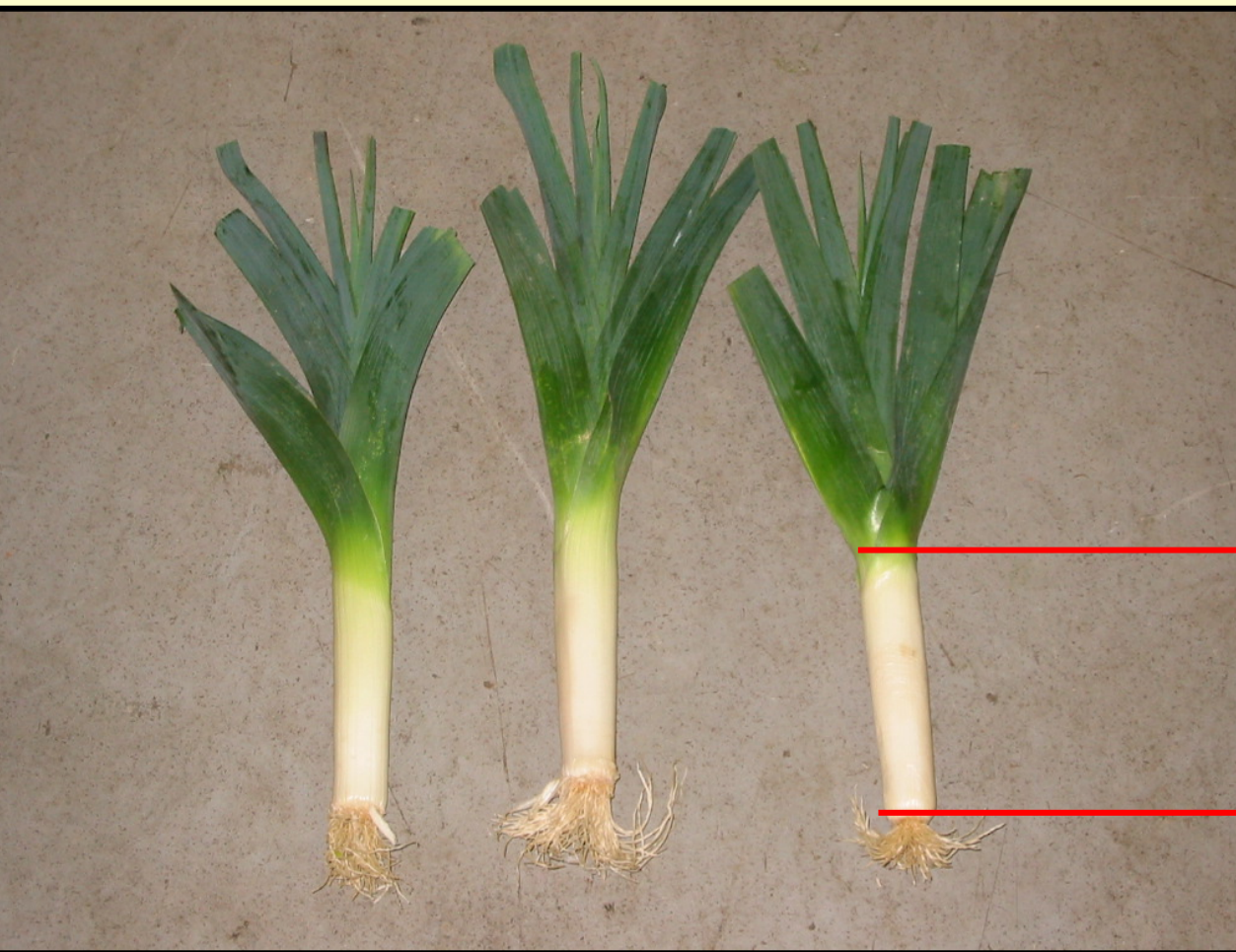
- min. 1/3 of total length
- min. 1/2 of the sheathed part

### Early leeks

- min. 1/4 of total length
- min. 1/3 of the sheathed part

## B. Classification

explanation of the sheathed part



the sheathed part

## B. Classification **class I**





## B. Classification **class I** (slight superficial defects)



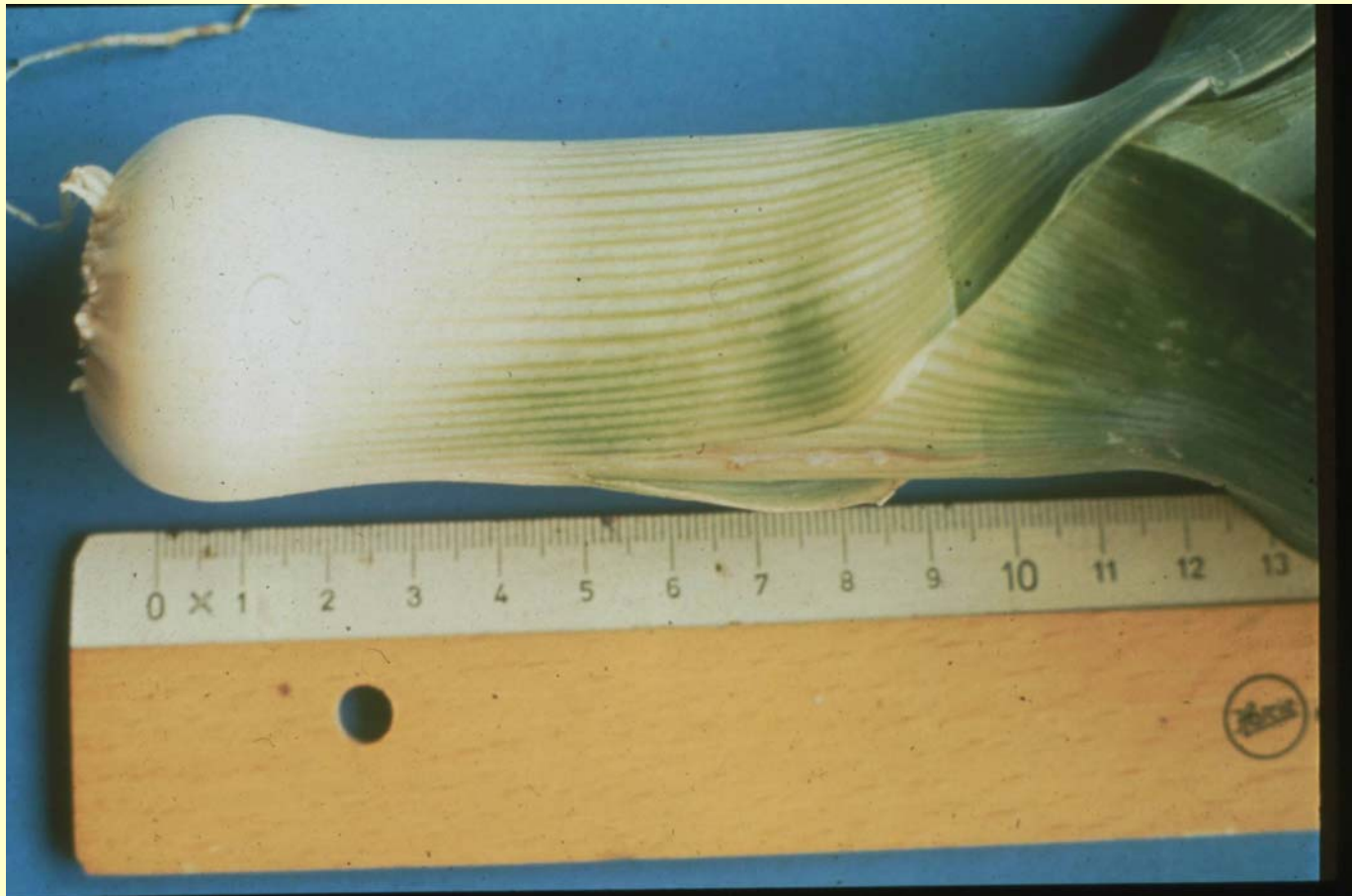
## B. Classification **class I** (slight traces of soil within the shaft)



**B. Classification Class II** white colouration (white to greenish white)



lebensministerium.at



- min. 1/4 of total length
- min. 1/3 of the sheathed part

## B. Classification

### **Class II**– Thrips on the leaves – max. allowed



lebensministerium.at



## B. Classification

**Class II** (slight bruising and traces of rust on the leaves, but not elsewhere)



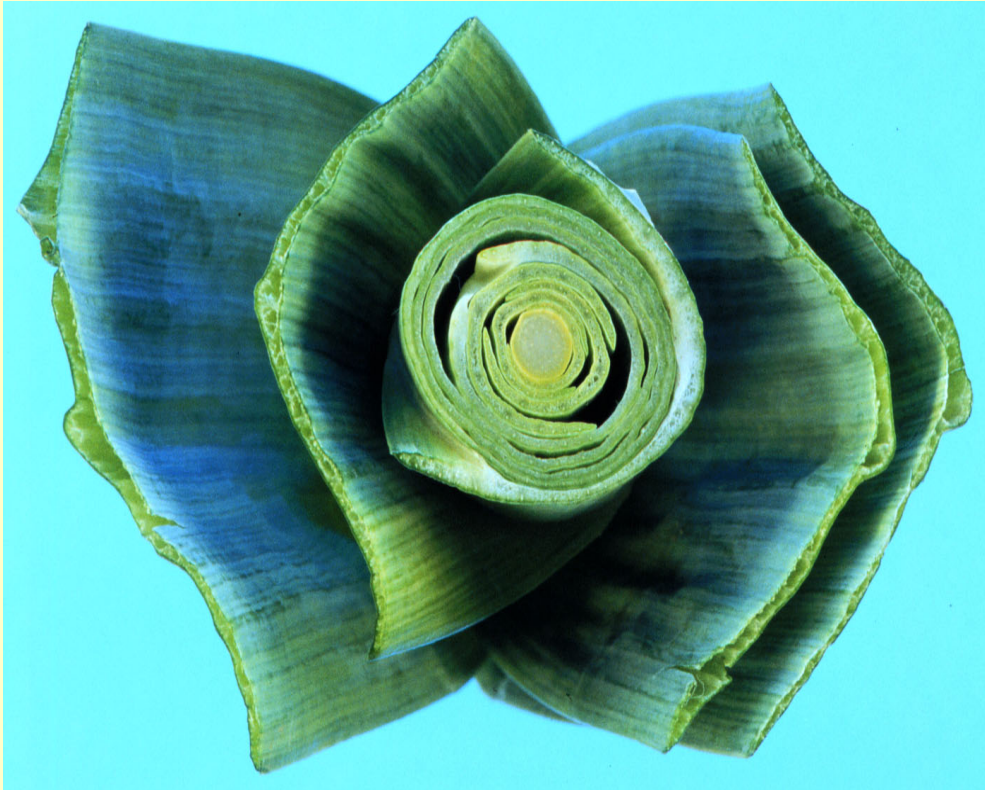
## B. Classification

**Class II** (traces of soil within the shaft)



## B. Classification

### Class II - flowerstem



**Limit of class II - pencil thickness**

### III. Sizing



**The minimum diameter is fixed at:**

- 8 mm for early leeks and
- 10 mm for other leeks.

#### **Sizing:**

For Class I, the diameter of the largest leek in the same bundle or package must not be more than **twice** the diameter of the smallest leek.

Size is determined by the diameter measured **at right angles to the longitudinal axis above the swelling of the neck.**



# V. Presentation

## A. Uniformity



- The contents of each package, or each bundle in the same package
- must be uniform and contain only leeks of the
- same origin, variety or type, quality and size (where for this criterion uniformity is prescribed), and appreciably
- The same degree of development and colouring.

The visible part of the contents of each package or bundle must be representative of the entire contents.

# V. Presentation

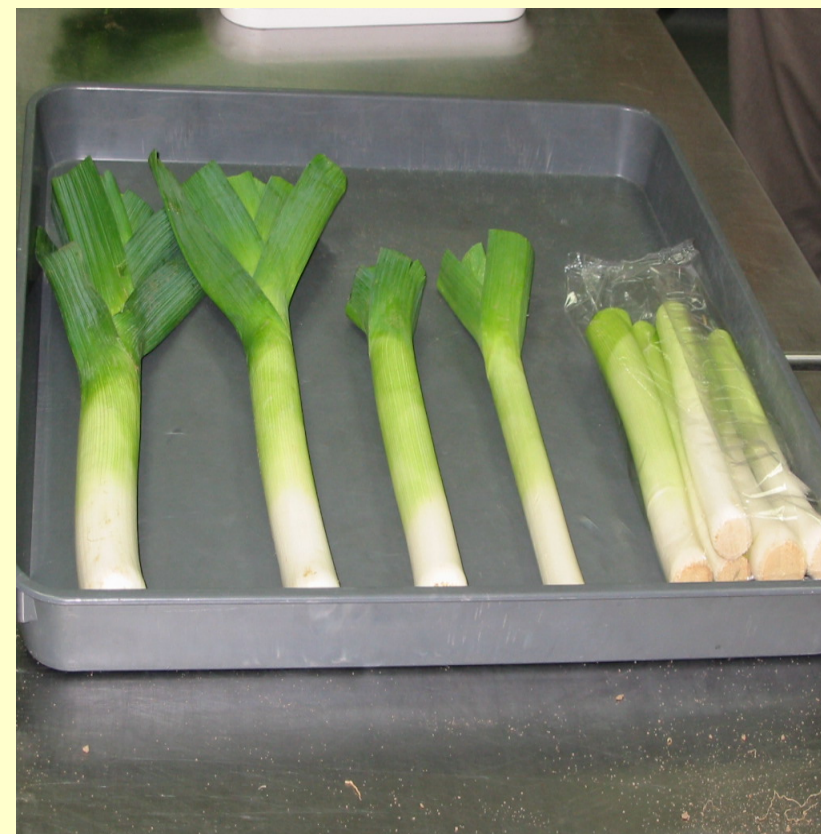


- arranged evenly in the package



- in bundles, whether or not in a package.

# V. Presentation



# VI. MARKING

## obligatory Elements



- **A. Identification**

Packer ) Name and address or and/or ) officially issued or  
Dispatcher ) accepted code mark. 3

- **B. Nature of produce**

- "Leeks" if the contents are not visible from the outside
- "Early Leeks" where appropriate.

- **C. Origin of produce**

- Country of origin and, optionally, district where grown, or national, regional or local place name.

- **D. Commercial specifications**

- Class
- Number of bundles (for leeks packed in bundles and presented in a package).

## VI. MARKING



# VI. MARKING



# Different SIZE



„Mini“ – which one??

**Guten Appetit!**

**Bon appétit!**



**Dobrú chut'!**







Thanks for **your** attention!

***Günter JESSL***



lebensministerium.at

lebensministerium.at

lebensministerium.at

lebensministerium.at

lebensministerium.at

lebensministerium.at

lebensministerium.at

lebensministerium.at

lebensministerium.at

lebensministerium.at