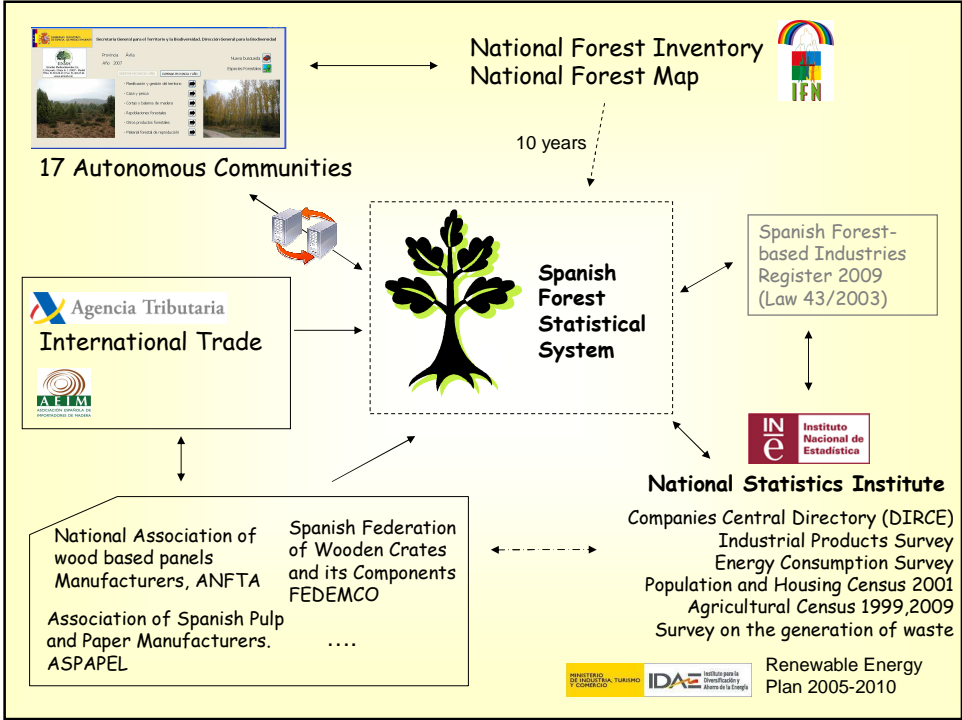


**BIODIVERSITY STATE OFFICE**  
(D.G. para la Biodiversidad)

**BIODIVERSITY DATA BANK**  
(Banco de Datos de la Biodiversidad)

**FORESTRY STATISTICS SECTION**  
(Sección de estadísticas forestales)

UPDATED MARCH-2008 BUT NEXT LIKELY CHANGES



## WOOD & INDUSTRY: OUR INFORMATION SOURCES

- WOOD CONSUMPTION
- PRODUCTION

INE

INDUSTRY

## INE

(National Statistics Institute)

- SOURCES (support):
  - National Industrial Production Survey
  - Agrarian Census (socio-economic data, potential supply)
- IMPROVINGS:
  - DIRCE: Spanish Forest-based Industries Register 2009 (Law 43/2003).
  - Review of Spanish Classification Systems:
    - Forest-based Activities (CNAE, (NACE EU-level)),  
Harmonized to CPA-2002
    - Forest-based Products
    - Forest-based Occupations

# INDUSTRY

- **PULP & PAPER:**

- Good quality
- Contrasted information
- National Level

- **PANELS:**

- Good quality
- Not contrasted (different classification systems).
- National & regional level

- **PLYWOOD:**

- 1 company representing 50%
- Consumption
- Production from 2007

- **SAWNWOOD:**

- Big difficulties at national level
- Estimated as “the difference”
- Sawmills: very small industries (not included in the National Industry Production Survey)

## FELLINGS IN 2006

