

Regional Approach for Wood Mobilisation in North Rhine-Westphalia

Josef Herkendell, Head of Unit Energy and Climate
Ministry of the Environment, Nature Conservation
Agriculture and Consumer Protection
of the State of North Rhine-Westphalia, Germany



Ministerium für Umwelt
und Naturschutz, Landwirtschaft
und Verbraucherschutz des
Landes Nordrhein-Westfalen

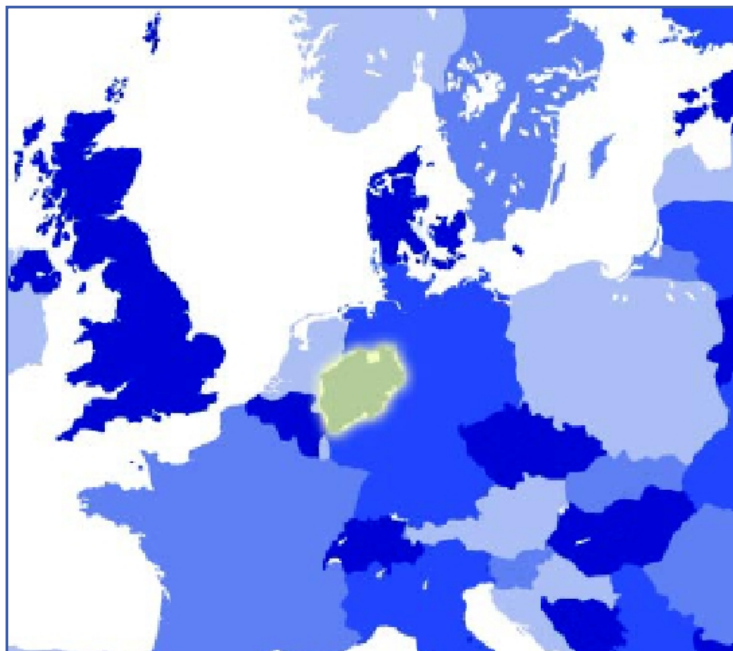


Contents

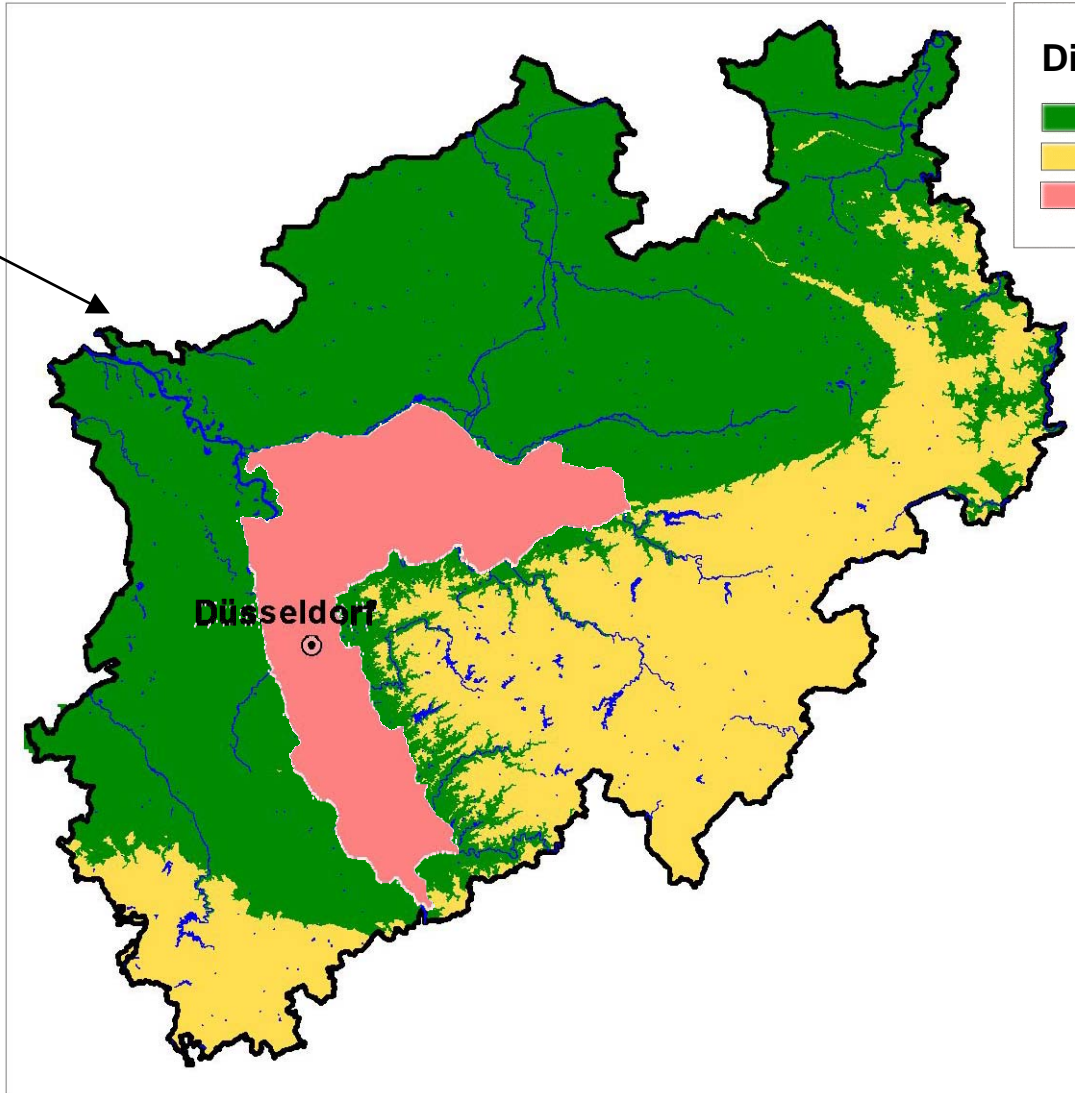
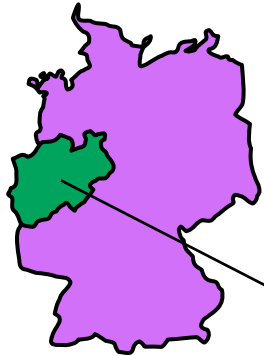
- General information about NRW
- What does “Regional“ mean?
- Biomass strategy NRW
- Regional Co-operation
- Conclusions / Recommendations

NRW: An Energy Region in the Center of Europe

- some figures -



- Population: 18 million
- GDP: 467 billion €
- NRW in Germany: 30% of electricity generation, 40% of industrial energy consumption
- 1.1 million employees in energy industry, energy-intensive basic industry, suppliers of equipment, electrical engineering industry and mining
- More than 200.000 employees in the forestry sector including distribution and processing



Division into natural spaces

- Flat country 55 %
- Low mountain ranges 33 %
- Conurbation in Rhine-Ruhr 12 %

Area: 34,082 km²

Pop. density:

530 inhabitants/sc km

Forest space per inh.:

500 sq m



Ministerium für Umwelt
und Naturschutz, Landwirtschaft
und Verbraucherschutz des
Landes Nordrhein-Westfalen

NRW.

Some Forests Figures and Facts about NRW

Forests area: 915.000 ha



Forest in low mountain ranges

- The share of forests is continuously going up
- The extension of forest land in conurbanized Rhine-Ruhr Area is a fact
- The share of broad leaves is increasing
- The diversity of tree species has also increased

What does „Regional“ mean ?

- Sphere or level of governance of a territorial political subdivision immediately below the central government of an individual State represented at the UN, but above the municipal or local level.
- This sphere of government is growing in importance world-wide as more countries seek to devolve or decentralise.
- Regional governments are main implementing bodies for global agreements on for example sustainable development like concrete climate protection measures like renewable energies and here bio energy.
- Regions are close enough to people and problems to tailor action but strategic enough to make links between areas of policies and other interests involved.
- Regional Governments are essential partners with other spheres of government and all stakeholders (like landowners, industry, forest administration, science) to ensure effective policy development and implementation.

Biomass Strategy NRW – important side conditions

- Unique properties of wooden biomass (for all kinds of energy conversion, electricity, heat, fuels; storable and applicable for basic load).
- Wooden chips should not be transported over long distances due to its low energy contents.
- Restrictions in further extension of forests on high productive agricultural land, regional differences (i.a. priority for subregions with a intensive meat production).
- Growing competition on the industrial round wood markets with the growing biomass energy sector and also with new industrial chemical products made out of wood.
- Wooden biomass should in principle be used for all products (electricity, heat, fuels). As a technology region we have a strong interest to export all techniques with a solid real references.
- Industrial sides with a high demand of biomass should have a good infrastructure (i.a. preferable access to water- and railways).
- Rural Development and decentralised references for energy supply.



Regional Approach – Biomass Strategy NRW

The challenge: We need to mobilise more (wooden) resources by

- Further extending forest land via afforestation and also energy plantations.
- Establishing new clusters to mobilise biomass inside and esp. outside of forests.
- Developing a regional strategy for an environmentally friendly integration of biomass (energy plants and crops) in agriculture and forestry production.
- Developing new harvesting techniques for i.a. slopes.
- Answering the question: Which is the most effective approach to stimulate and reach “UFO’s”.



Important acteur: EnergyAgency.NRW (www.ea-nrw.de)

Principles and major tools of the EnergyAgency.NRW

Network of Expertise for Biomass:

Principles:

- Independent counselling for all parties involved
- Continuously providing a communication platform and partners
- Promoting innovative ideas, approaches and new techniques

Tools:

- Communication
- Cluster and networks
- PR
- Workshops
- Launch projects



Ministerium für Umwelt
und Naturschutz, Landwirtschaft
und Verbraucherschutz des
Landes Nordrhein-Westfalen

NRW.

Environmental Concerns and Solutions

- Loss or change of biodiversity in forests or other land covered with trees and shrubs.
- Possible answer: Intensive Monitoring of changes in biodiversity in more intensively used forests to better understand the real dynamic processes and changes in different forest eco-systems in Europe.



Regional Co-operation



Network of Regional Governments for
Sustainable Development
www.nrg4SD.net

nrg4SD au Website to exchange information about best practise
in the field of renewable energies „www.regional-renewables.org“



Ministerium für Umwelt
und Naturschutz, Landwirtschaft
und Verbraucherschutz des
Landes Nordrhein-Westfalen

NRW.



Search:

Home

November 29, 2005

- General Information
- Regions
- Energy Sources
- Support Programms
- Adresses
- Download
- Links

Welcome to regional-renewables.org

Worldwide Regional Portal for Renewable Energy

Regions all over the world are working hard to bring forward renewable energies. They are motivated by the facts that an expansion of renewable energies permits development and growth especially in remote rural areas, that renewable energies create jobs, reduce dependence on oil and protect our climate.

The aim of this Internet Portal "www.regional-renewables.org" is to exchange information and experience on renewable energies and to further extend the worldwide networking between regions in this matter. With the active co-operation of regions all over the world this web site will be a helpful instrument to strengthen renewable energies. There are multiple reasons to focus on action!

News & Events

REN21

Renewable Energy Policy Network for the 21st Century gives you current information
www.ren21.net
www.euro-solar.org

WCRE

For the renewable energy world council see
www.wcre.org/

Renewables 2005

The renewable 2005 conference took place in China in November 2005
<http://www.birec2005.cn>

The information on this web-site is structured by regions and energy sources.




Regions

We all know that there are already quite a lot of success stories worldwide! What is highly needed now is to improve co-operation and establish a worldwide professional network among experts and decision-makers in the field of renewable energies. A permanent and worldwide communication flow to exchange valuable experiences and information on renewable energies and

best available technologies is required. Better co-operation will help to detect demand and requirements on regional level worldwide and to develop strategies to handle them. [See all active regions](#)

 Energy Sources

 Wind Energy

 Internet

www.regional-renewables.org



Regional Co-operation

- Bi-/Multilateral Co-operation
 - Flanders, Belgium
 - Basque Country, Spain



Conclusions/ Recommendations

- Due to the known broad differences in forest side conditions and underlying structures in Europe different (regional) measures/approaches are needed to effectively mobilise wooden resources.
- Continuous Communication and Intensive Counselling is essential.
- Recommendation based on regional experience: A first step: Exchange of Information about Best Practise and Experiences in policies, programmes and actions might be of common interest to stimulate the process.

Thank you very much for your attention!

Josef.Herkendell@munlv.nrw.de



Ministerium für Umwelt
und Naturschutz, Landwirtschaft
und Verbraucherschutz des
Landes Nordrhein-Westfalen

NRW.