

## **Item 6(c) of the provisional agenda, Reporting on Sustainable Forest Management in the Caucasus and Central Asia**



**78<sup>th</sup> session of the ECE Committee on Forests and the Forest Industry**

**4-6 November 2020, Geneva, Switzerland**



# National Principles, Criteria and Indicators for Sustainable Forest Management of Georgia

- **Carl Amirgulashvili**
- **Head of Biodiversity and Forestry Department**  
**The Ministry of Environmental Protection and Agriculture of Georgia**



# FOREST AREA

## ALL FORESTS ARE STATE PROPERTY

Forest Fund – 3 million ha  
(43%)

Forest cover – 2.8 million ha (40%)

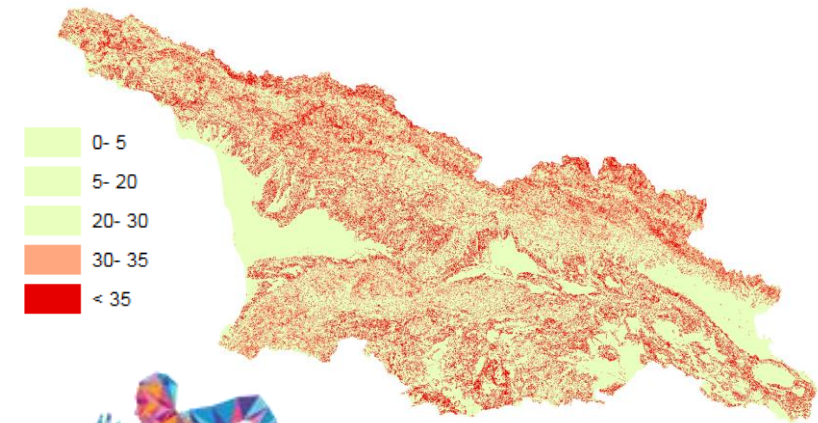
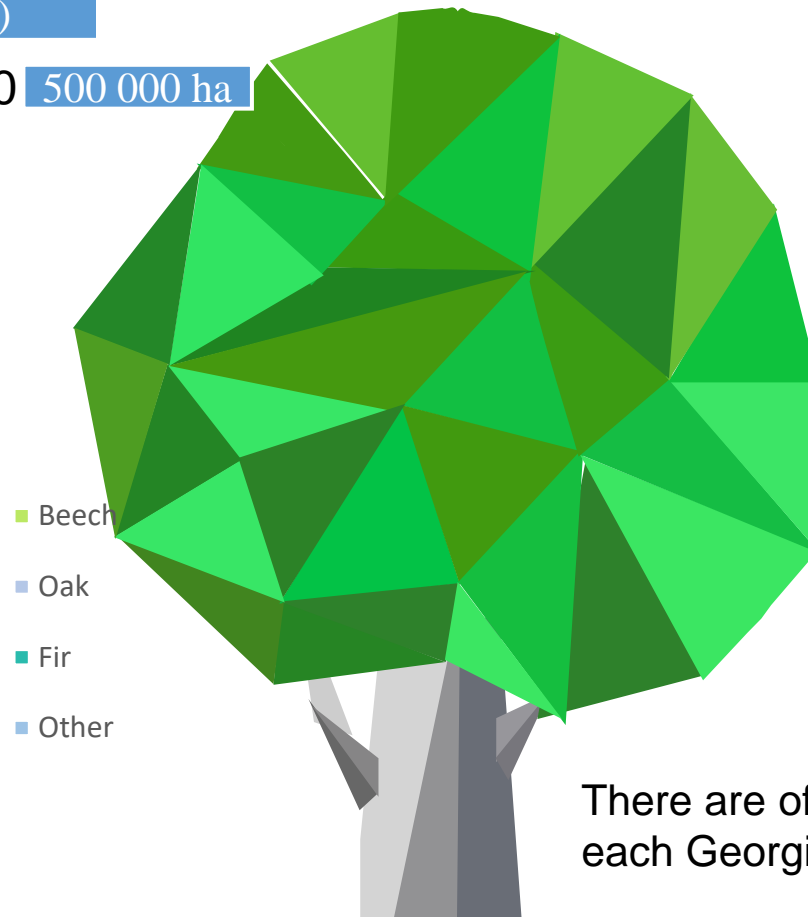
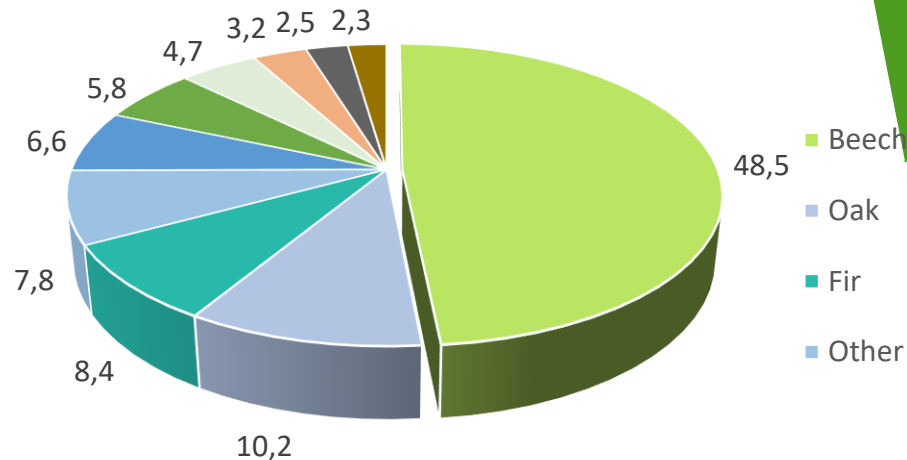
Primary forest unchanged since 1990 500 000 ha

The majority of Georgia Forest is of natural origin

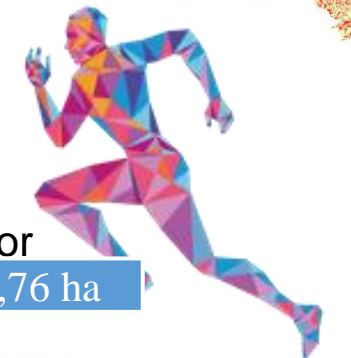
Lowland Forest 2 %

98 % Is mountain forest and has important protection functions

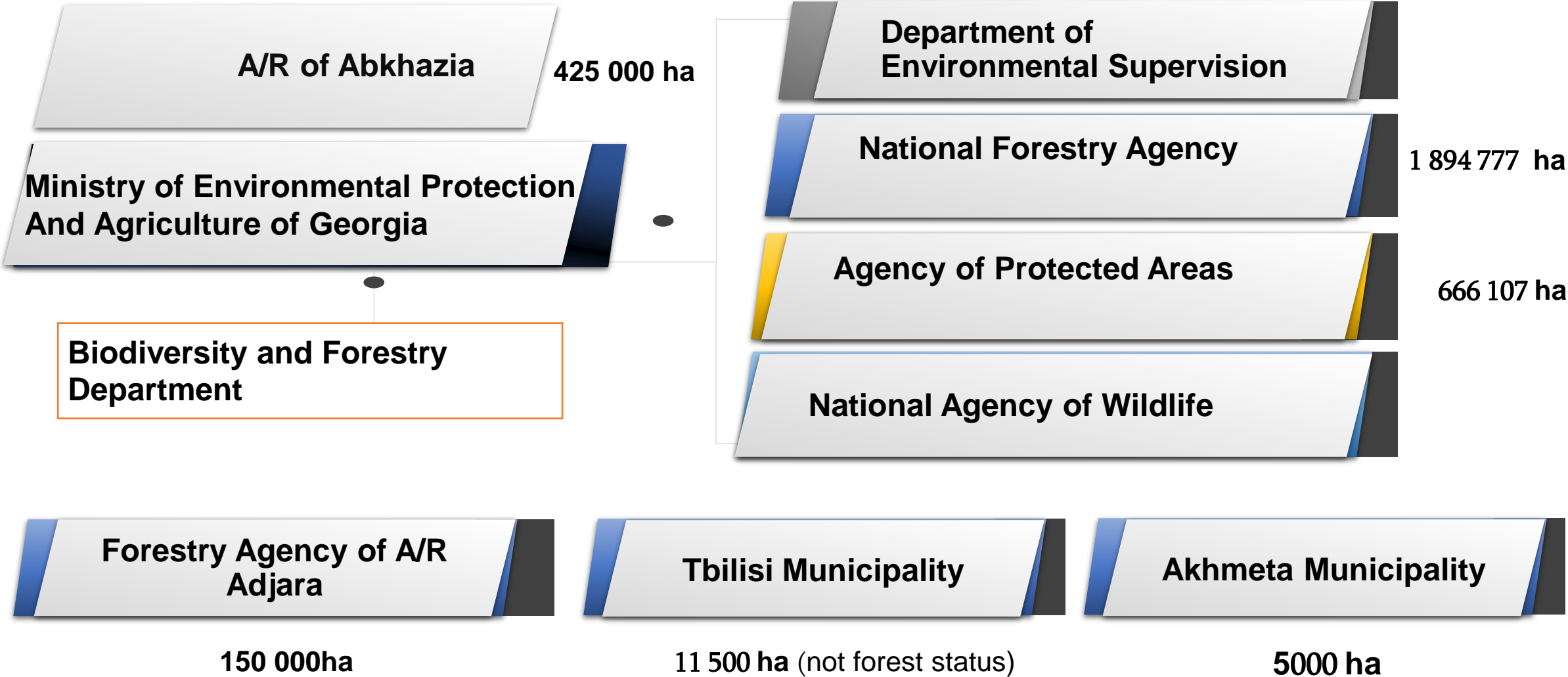
## TREE SPECIES



There are of forest for each Georgian – 0,76 ha



# FOREST MANAGEMENT AND INSTITUTIONS



# FOREST SECTOR RELATED CHALLENGES AND REFORMS

## • CHALLENGES

- Collisions in law
- Social-economical background
- Lack of infrastructure
- Lack of reliable data on quality & quantity of Georgian Forests;
- Illegal logging and License holders
- Social Factory – agency of issuing firewood;
- Lack of qualified human resources

## • REFORMS

- ✓ Adoption of National Forest Concept (NFC) in 2013
- ✓ Adoption of Forest Code in 2020
- ✓ Ongoing process of creating the sublegal acts under the Forest Code
- ✓ Active ongoing process for adoption of C&I document





☐ The project has built upon existing processes and expertise in Georgia addressing country-specific needs **provided knowledge, capacity-building, training materials** and **advisory services** for developing the national level Criteria and Indicators for SFM in order to support evidence-based policy making.

☐ **Challenges that project has to address in Georgia:**

- ☐ Data is often not available;
- ☐ Measurements and collection of data are difficult and require capacity that were missing;
- ☐ Data provided at International forest reporting processes was outdated;
- ☐ Proper monitoring tools such as national criteria and indicators did not exist in Georgia;

☐ The duration of the project: 2016 – 2020;

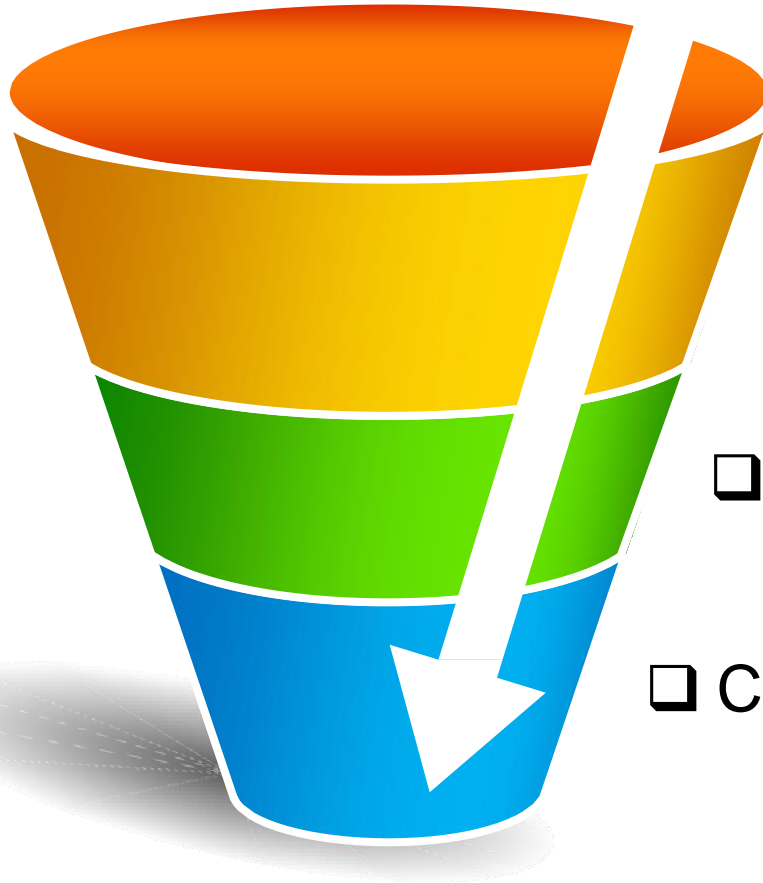
☐ Ministry of Environmental Protection and Agriculture of Georgia is guiding the project;

☐ Financial support is provided by GIZ.



# The purpose of elaboration of the document

❑ C&I will be used for monitoring the status, trends and progress in the forest sector at a national level. It will serve as a tool to communicate the relevance and importance of forests management at national, regional as well as international level;



- ❑ Monitoring the impact of forest management and assessing the sustainability
- ❑ Providing a framework for reporting the status of forests
- ❑ Common understanding of what is meant by sustainable



**Capacity-building:**

- Facilitation of multi-stakeholder processes;
- Build up an atmosphere of trust between the various forestry stakeholder groups;
- Implemented national and regional coaching workshops;

**The workshops has reached concrete results:**

- Coherency and prioritization of C&I;
- Factsheets elaboration and methodology of data collection;
- Gap analysis of the national legal framework to improve consistency with the indicator set;
- During the national and regional workshops international experts were sharing their knowledge gained through practical work;

**Training materials:**

- Provided guideline for the Development of a C&I Set for SFM. Coordinating/ facilitator teams responsible for National C&I Set Development developed the document according to the guideline;

**Advisory services and provided knowledge:**

- International experts were actively involved in the process of elaboration of the set of C&I through providing comments and recommendations on the document;





# Elaboration of the document



❑ Process started in 2014

## Work performed in 2017:

- 3 workshops supported by GIZ
- National coaching workshop supported by FAO / UNECE

## Work performed in 2018:

- A regional coaching workshop supported by FAO / UNECE
- Workshop at national level supported by GIZ

## Work performed in 2019:

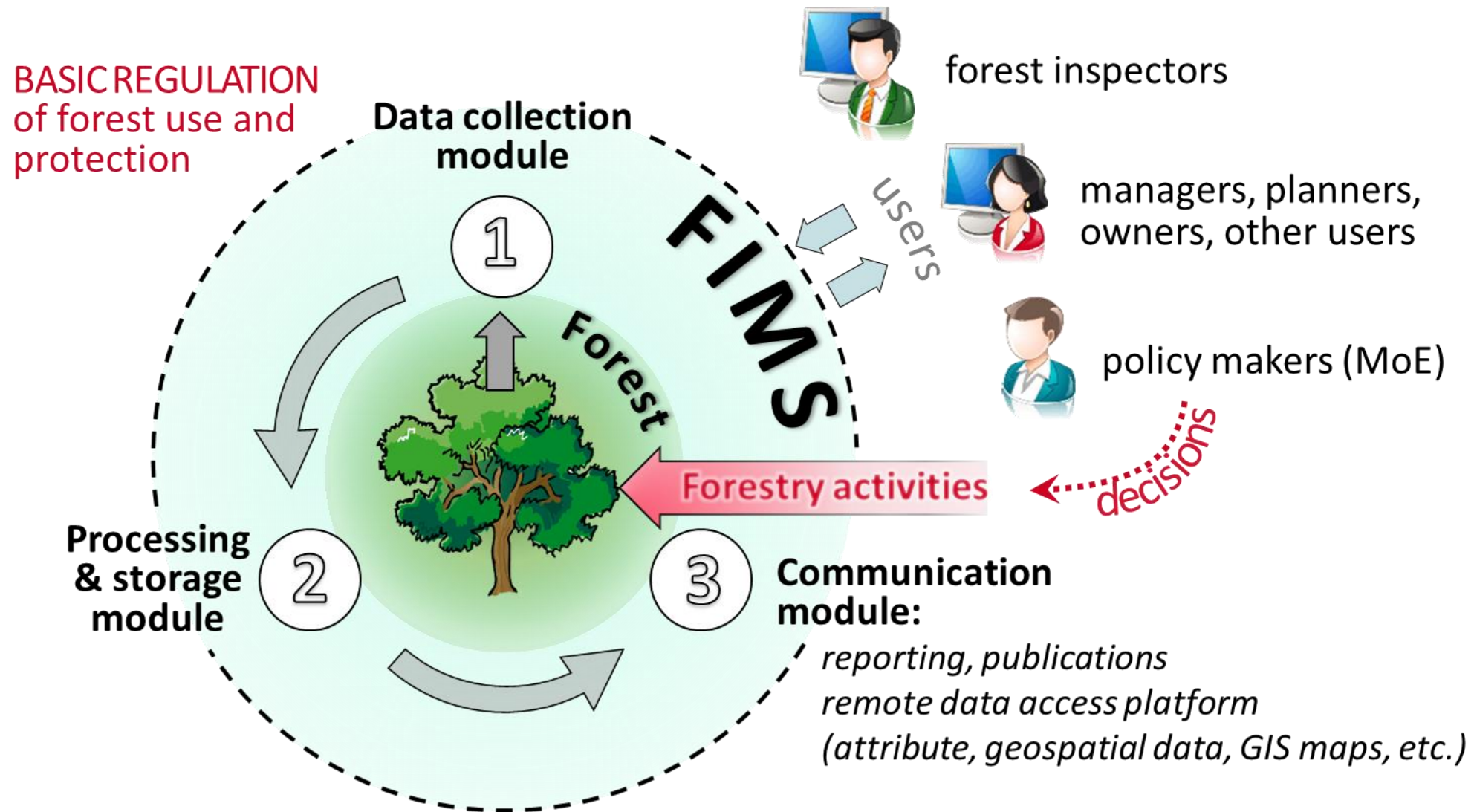
- Final set of C&I was elaborated and presented to the audience;

## Work performed in 2020:

- Development of factsheets of C&I is ongoing;



# FOREST INFORMATION AND MONITORING SYSTEM (FIMS)







THANK YOU