



Introduction to the ECE/FAO Integrated Programme of Work 2014-2017

Dominique Reeb

**Special Session of the COFFI with the EFC
17-18 June 2013**



PROCESS

- Input of the Strategic Review (incl. surveys, retreats, self-assessments)
- First draft developed by the COFFI/EFC Joint Bureaux
- Review by the Timber Committee in October 2012
- Contribution of the Working Party on Forest Statistics, Economics and Management in April 2013 (ToRs).
- **New version: ECE/TIM/S/2013/4**
 - + Inf. 3 (List of activities) – Link to the Action Plan
 - + Inf. 4 (Mandates and ToRs)
- Final version to be adopted at Metsä 2013





OVERALL GOAL

The overall goal of the UNECE Timber Committee, the FAO European Forestry Commission, their related bodies and the Teams of Specialists is to sustainably manage and use UNECE-region forests so that they provide products and ecosystem services to benefit society.

OBJECTIVE

The Joint programme of work aims to help member countries to achieve the overall goal by providing the best available information, facilitating policy dialogues and communication, and building capacity.



STRUCTURE

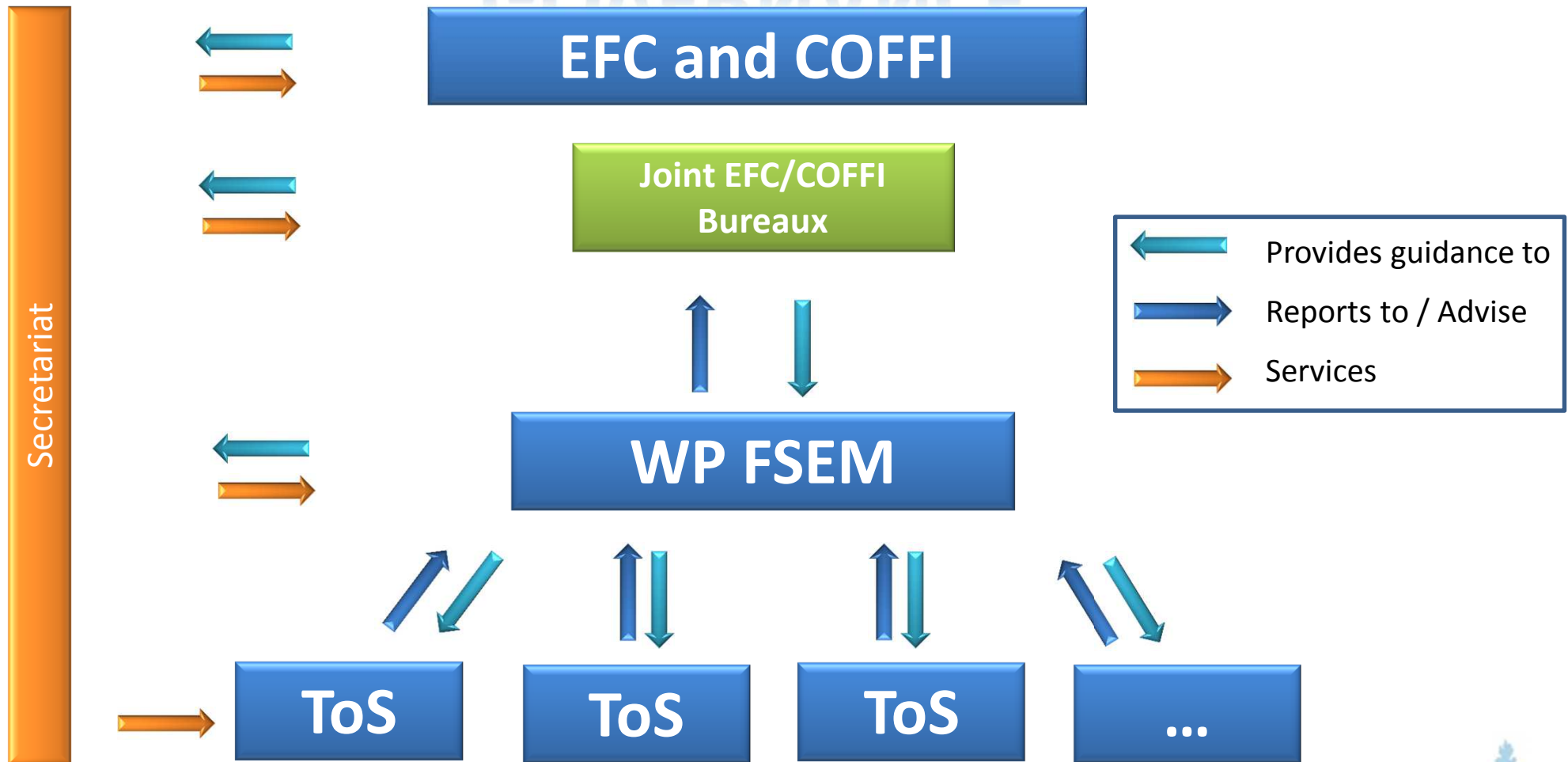
4 Main Functions:



PRINCIPLES



GOVERNANCE



TEAMS OF SPECIALISTS

WA1 (Data, monitoring and assessment)

- Monitoring Sustainable Forest Management
- Sustainable Forest Products
- Forest Products Statistics
- Wood Energy

WA2 (Policy dialogue and advice)

- Forest Policy
- Forest Sector Outlook
- Forest Fires

WA3 (Communication and outreach)

- Forest Communication

WA4 (Capacity building)

- Green jobs in the forest sector





UNITED NATIONS
ECONOMIC COMMISSION
FOR EUROPE



Food and Agriculture
Organization
of the United Nations

Thank you!

