



35th Session Joint FAO/UNECE Working Party on Forest Statistics, Economics and Management Geneva – 23-25 April 2013



Report on Activities of WA2 Forest Resources Assessment

Roman Michalak



ECE-FAO work on forest resources assessment

- Global Reporting on Forest Resources
- Pan-European reporting on forests and forest management
- Cooperation and communication



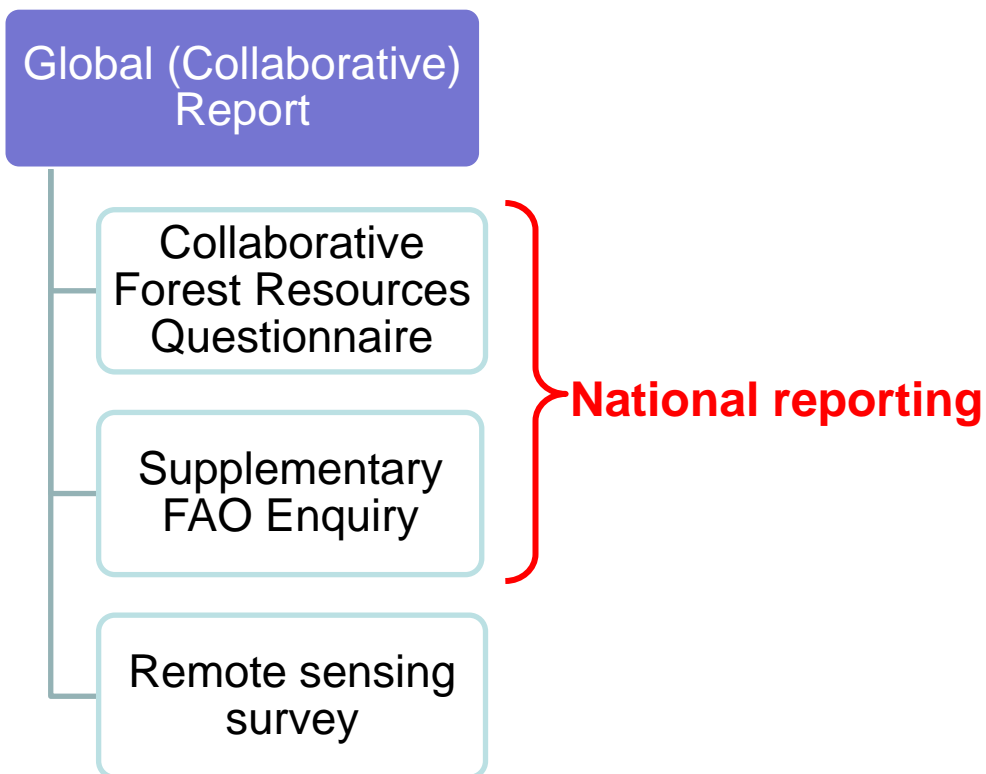
Global Reporting on Forest Resources



35th session, FAO/UNECE Working Party on Forest Statistics, Economics and Management



Forest Resources Assessment 2015 (global perspective)



FRA 2015

- Seeks to contribute answers to 20 globally-significant forest resource questions
- Attempts to reduce reporting burdens:
 - 58% of all variables pre-filled from FRA 2010 (1990-2010)
 - 56% of all variables are included in the CFRQ
 - 13% of all entries of new data will be pre-filled, primarily from remote sensing, FAOSTAT and UN data sources
- Address stated user needs and improve overall quality



Key Milestones

- **February 2013:** Release of the Enquiry
- **April 2013:** Forest Resources Information System (FRIMS) release 1.0
- **May 2013:** Global meeting of National Correspondents
- **October 2013:** Workshop for FRA National Correspondents in the ECE region
- **December 2013:** Country reports completed/reviewed
- **March 2014:** Initial data analyses completed
- **March 2015:** Key findings released
- **September 2015:** FRIMS opened to public, FRA report(s) released

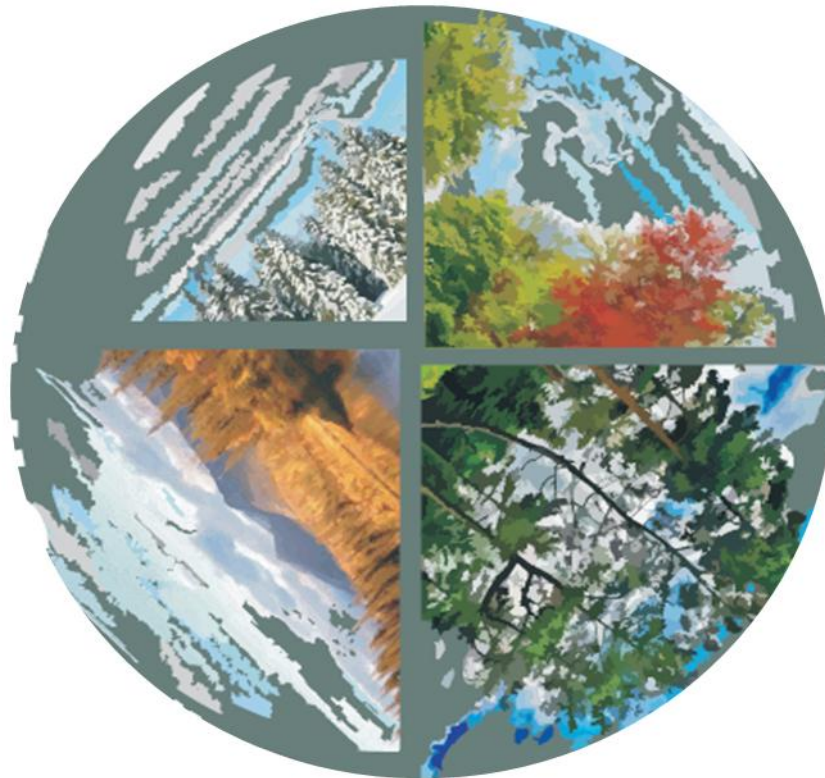


ECE-FAO participation in FRA 2015

- Preparatory process
 - AG, CFRQ, thematic workshops
 - 4th Meeting of ToS, Saint Petersburg, May 2012
- Data collection process
 - Coordination and assistance to 54 countries in their national reporting
 - Organization of the workshop for national correspondents, Geneva, October 2013
- Analysis of information and production of the final outputs



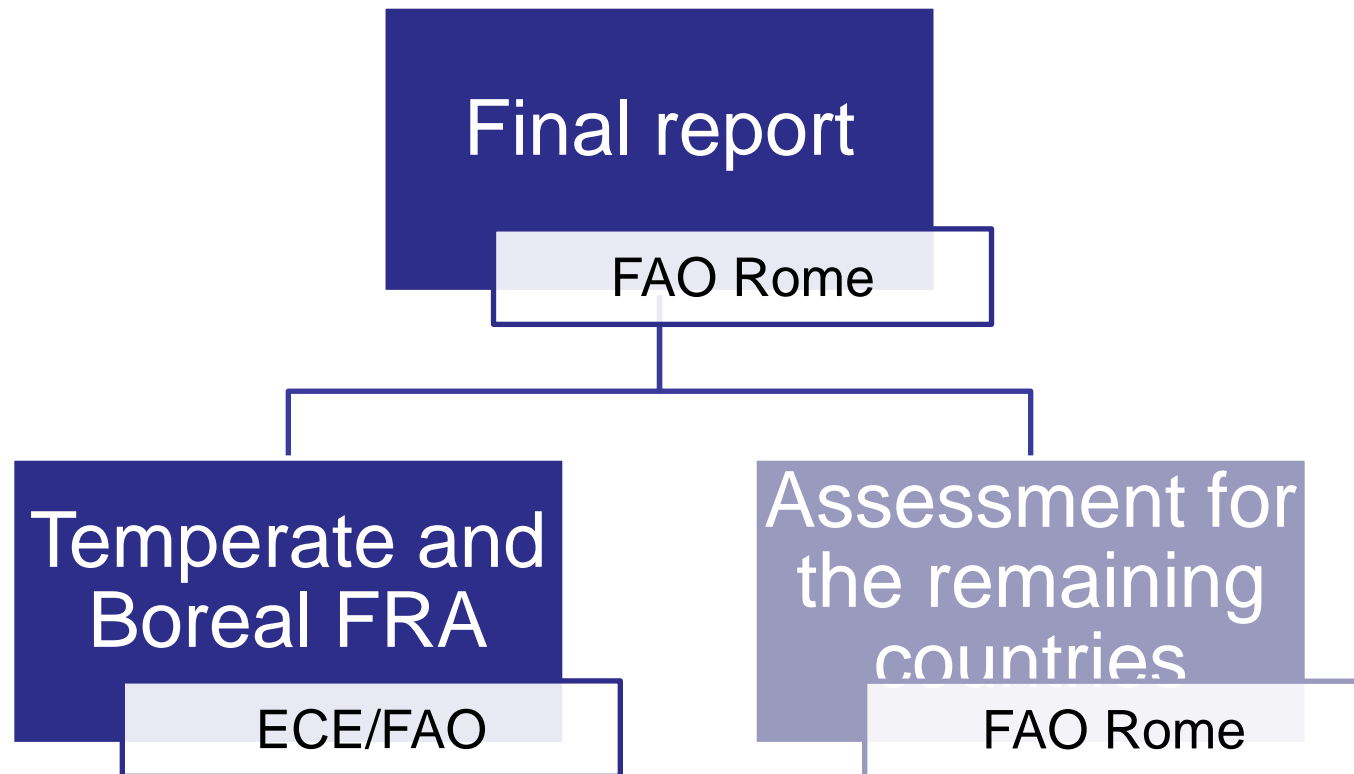
Pan-European reporting on forests and forest management



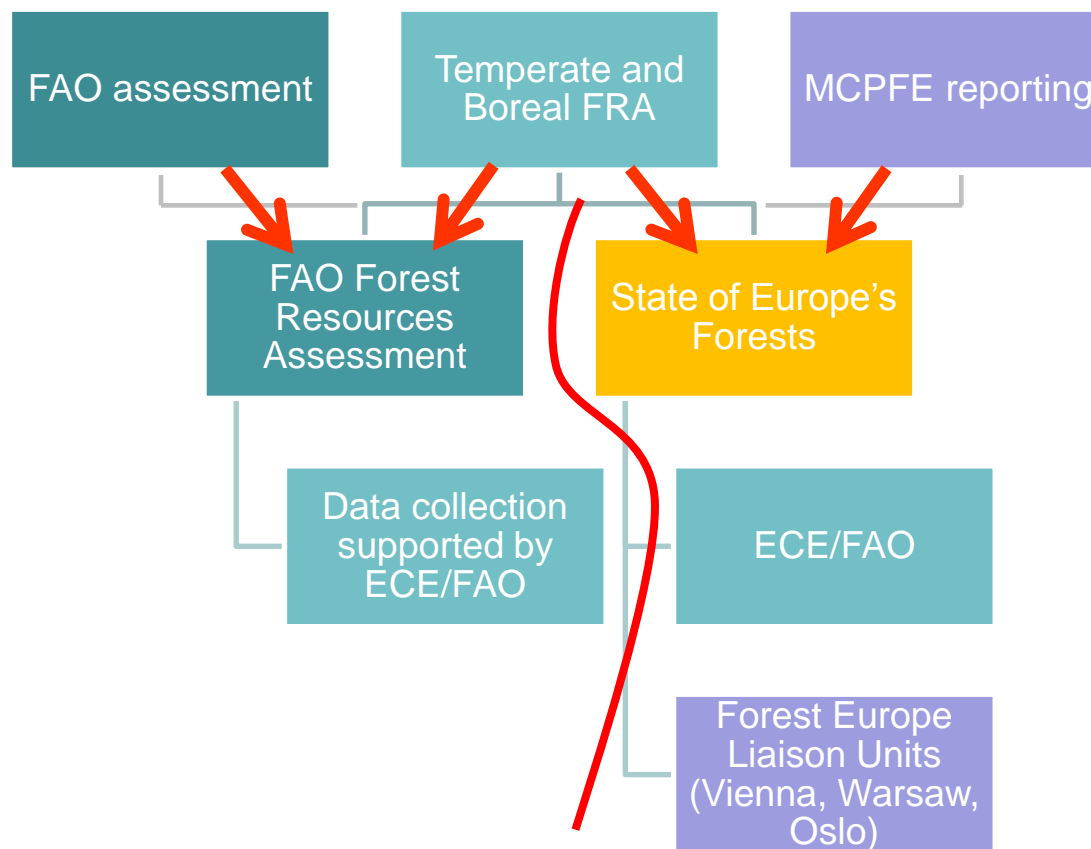
35th session, FAO/UNECE Working Party on Forest Statistics, Economics and Management



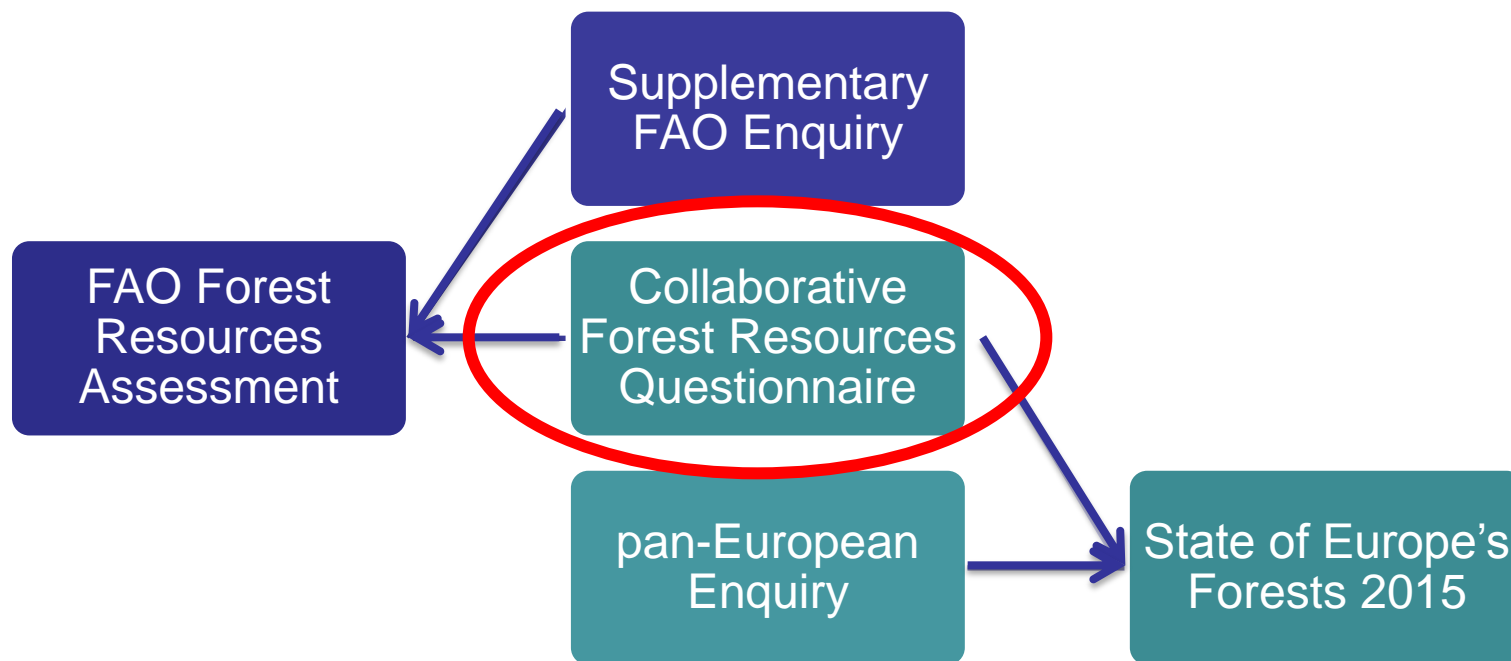
FRA Until 2000



2000 - 2010



FRA and SoEF 2015



Pan-European Reporting 2015 (global and regional components)



Indicators

Entities

**SoEF
total**

28

1473

**of which
CFRQ**

13

251



Preparatory work for regional reporting (1)

- SoEF 2011 Survey
- Review of SoEF 2011 Enquiry
- Thematic expert groups for concern areas:
 - Availability of wood supply
 - Socio-economic indicators
 - Sustainability of forest management
- Harmonization with CFRQ (FRA) reporting



Preparatory work for regional reporting (2)

- Meeting of the Advisory Group
- 2 meetings of the ToS
- 4 thematic workshops
- Special Enquiry on FAWS



Organization of work (1)

- ECE/FAO will manage data collection process according to the global and pan-European questionnaires
- One FRA national correspondent will be in charge of the global and regional reporting
- One reviewer will work with a country on preparation on both questionnaires
- October workshop to discuss problems related to both questionnaires



Organization of work (1)

- National reporting will cover 28 indicators; information for the remaining ones will be collected in 2014 through:
 - International Data Providers (5 indicators)
 - Research networks (2 indicators)
- Forest Europe Expert Level Meeting held in March 2013 recommended not to report according to the new classification on European Forest Types in the on-going cycle

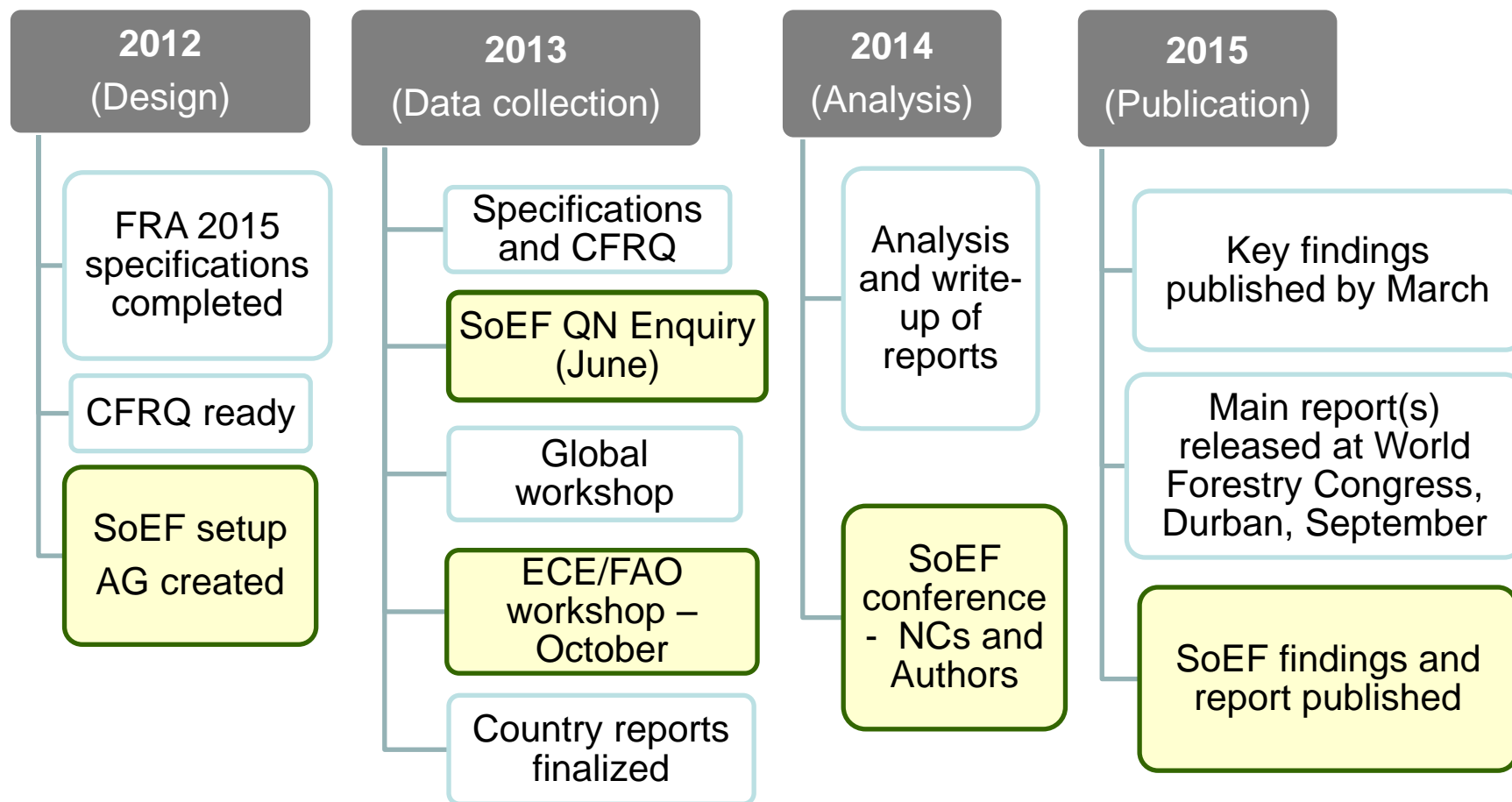


Schedule of the reporting on quantitative indicators, coordinated with the CFRQ

- Release of the global Questionnaires – February 2013
- Pan-European Questionnaire:
 - “Zero” draft - ToS meeting in February 2013
 - First draft – mid of April 2013
 - Consultation on the 1st draft – mid of May 2013
 - 2nd draft – end of May
- Global Meeting of National Correspondents – May 2013
- Release of the pan-European Enquiry – June 2013
- Regional workshop for National Correspondents – Geneva, 16-18 October, 2013
- Deadline for reporting – end of 2013



FRA 2015 and SoEF Milestones



Cooperation and Communication



35th session, FAO/UNECE Working Party on Forest Statistics, Economics and Management



Cooperation

- Global workshops:
 - "Streamlining forest based reporting - a collaboration workshop", Jacksonville, United States, August 2012
 - “Week of International Workshop and Seminar on Forest-based Reporting”, Tokyo, Japan, December 2012
- Establishment of cooperation with Montréal Process and its Technical Advisory Committee
- Participation in work and contribution to regional organizations and activities (e.g. COST Action USEWOOD, EFI project on Implementing C&I for SFM, European Forest Data Center, Forest Europe)



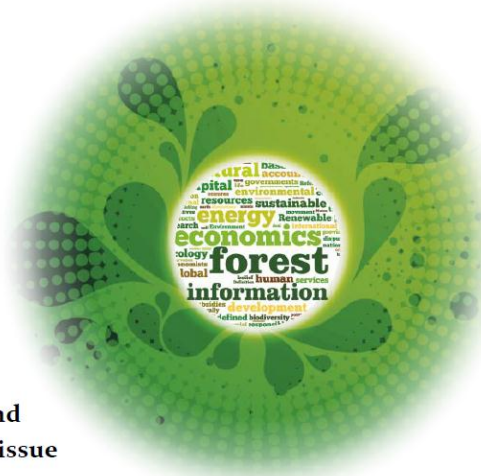
Dissemination

Forest Information Billboard

1/2013

All are invited to share information and developments on forest related reporting processes among organizations and countries.

To contribute your ideas contact UNECE/FAO Forestry and Timber Section (elina.warsta@fao.org). Deadline for the next issue is 15 June 2013.



Forest Reporting

Reporting on Global and Pan-European Forest Resources

For the first time, reporting according to the pan-European Criteria and Indicators on SFM will be carried out in a coordinated way with the global (CFRQ and FRA) data collection processes. The activity is done in



Collaboration on SoEF 2015 (1)

- Planned as the joint activity led by:
 - Forest Europe Liaison Unit Madrid
 - ECE/FAO Forestry and Timber Section
- Despite numerous attempts, no agreement has been reached between ECE/FAO and Forest Europe,
- This, among others, results in lack of:
 - overall coordination of the process,
 - general plan and roadmap,
 - budget and resources, and
 - agreement on outputs and users rights
- **Risk of delay or even stopping the process**



Collaboration on SoEF 2015 (2)

The issue was discussed by the COFFI and EFC Bureaux meeting, which *“suggested that the WP meeting discussed the issue and develops a series of recommendations in this regard and:*

- *Urges the LUM to agree on the organization of work for the SoEF;*
- *Invites the Secretariat to continue with its preparatory work, in particular on quantitative indicators;*
- *In the absence on an agreement with Forest Europe in the coming weeks, requests the Special Session in June to decide on how to proceed.”*



Collaboration on SoEF 2015 (3)

The Forest Europe General Coordinating Committee responding to the ECE COFFI and FAO EFC Bureaux, informed that the Forest Europe:

- is willing to prepare a document to specify the distribution of the technical tasks among entities
- is not willing to share the copyrights for the report
- considers translation of the report to be an internal issue of Forest Europe

Likely the ECE/FAO cannot be involved without copyrights (legal advice expected soon)



The Working Party is invited to provide comments and suggestions, to be submitted to the Special Session in June, on:

- ***the collaborative process of production of the next SoEF, including:***
 - ***the collection process on quantitative information for the next SoEF***
- ***the agreement between ECE/FAO and Forest Europe in this regard***



The Working Party is invited to:

- ***comment on the current process and plans for the development of the global collaborative reporting on forests and its coordination with the pan-European reporting***
- ***comment and advise on activities for supporting international cooperation and direction of this cooperation***

