

# European Forest Sector Outlook Studies – EFSOS II

Mart-Jan Schelhaas



# Core group members

- M.J. Schelhaas (Chair)
- J. Prestemon (Vice-Chair)
- U. Mantau
- U. Saal
- F. Steierer
- A. Baudin
- C. Wildburger
- I. Higuero
- R. Jonsson
- M. Dieter
- H. Weimar
- A. Moiseyev
- H. Verkerk
- UNECE secretariat

# Scenarios

- Reference futures: IPCC A1 and B2 for the global context

## Policy scenarios

- Maximising carbon stock in forests
- Prioritising wood energy
- Prioritising biodiversity
- Innovation and technology

# Methods – Wood Resource Balance

(potential) supply

Forest woody biomass



(potential) demand

Material uses

Econometric  
modelling

Other woody biomass



Energy uses

Energy  
modelling

Showing difference between independent estimates or a balanced outcome

# Methods - EFI-GTM (global trade model)

- Puts Europe in the global context
- Solves possible 'gaps' by trade or decreased consumption
- First attempts to include wood energy
- Yields a balanced WRB

# Dashboard tool for visualisation

Microsoft Excel - Copy\_of\_EFSOS\_Dashboard\_20110309.xls

Type a question for help

Arial 10

07 Selection by scenario

**EFOS TOTAL**

Wood Resource Balance								demand A1
consumption	2010	2020	2030	2010	2020	2030		
	M m <sup>3</sup>	M m <sup>3</sup>	M m <sup>3</sup>	M m <sup>3</sup>	M m <sup>3</sup>	M m <sup>3</sup>		
stemwood, conifers	455.5	448.3	440.1	228.8	256.5	291.7	sawmill industry	
stemwood, non-con.	236.1	230.8	233.9	13.0	16.4	20.2	veneer plywood	
stemwood, total	691.6	679.1	674.0	152.4	179.6	214.1	pulp industry	
forest residues	147.6	150.4	149.0	106.0	127.7	158.9	panel industry	
bark	70.7	69.5	68.9	19.4	22.8	27.4	other material uses	
landscape care wood	66.9	87.5	108.0	92.1	107.3	126.3	forest sect. intern. Use	
saw mill by products	100.6	112.4	127.4	105.4	128.4	183.2	biomass power plants	
other industrial res.	34.4	40.7	49.1	23.5	43.4	49.5	households (pellets)	
black liquor	63.9	75.5	90.1	213.6	224.6	205.7	households (other)	
post consumer wood	45.6	66.6	82.7	0.0	0.6	20.6	liquid biofuels	
solid wood fuels	21.9	46.9	58.1	21.9	46.9	58.1	solid wood fuels	
<b>total</b>	<b>1,243.3</b>	<b>1,328.5</b>	<b>1,407.2</b>	<b>976.2</b>	<b>1,154.3</b>	<b>1,355.7</b>	<b>total</b>	

Source: EFSOS II, Wood resource balance

forest residues = forest residues, stumps and other woody biomass from forests  
 other industrial res. = residues from all wood processing excluding saw mill by products

For the following countries no separation between C and NC was possible so far.

- Bosnia and Herzegovina
- Iceland
- Montenegro
- The former Yugoslav Republic of Macedonia

Selection by region  
 Country  
 EFSOS TOTAL

Selection by scenario  
 IPCC Scenario  
 A1

Supply potential  
 reference scenario  
 no choice so far

Energy scenario  
 baseline

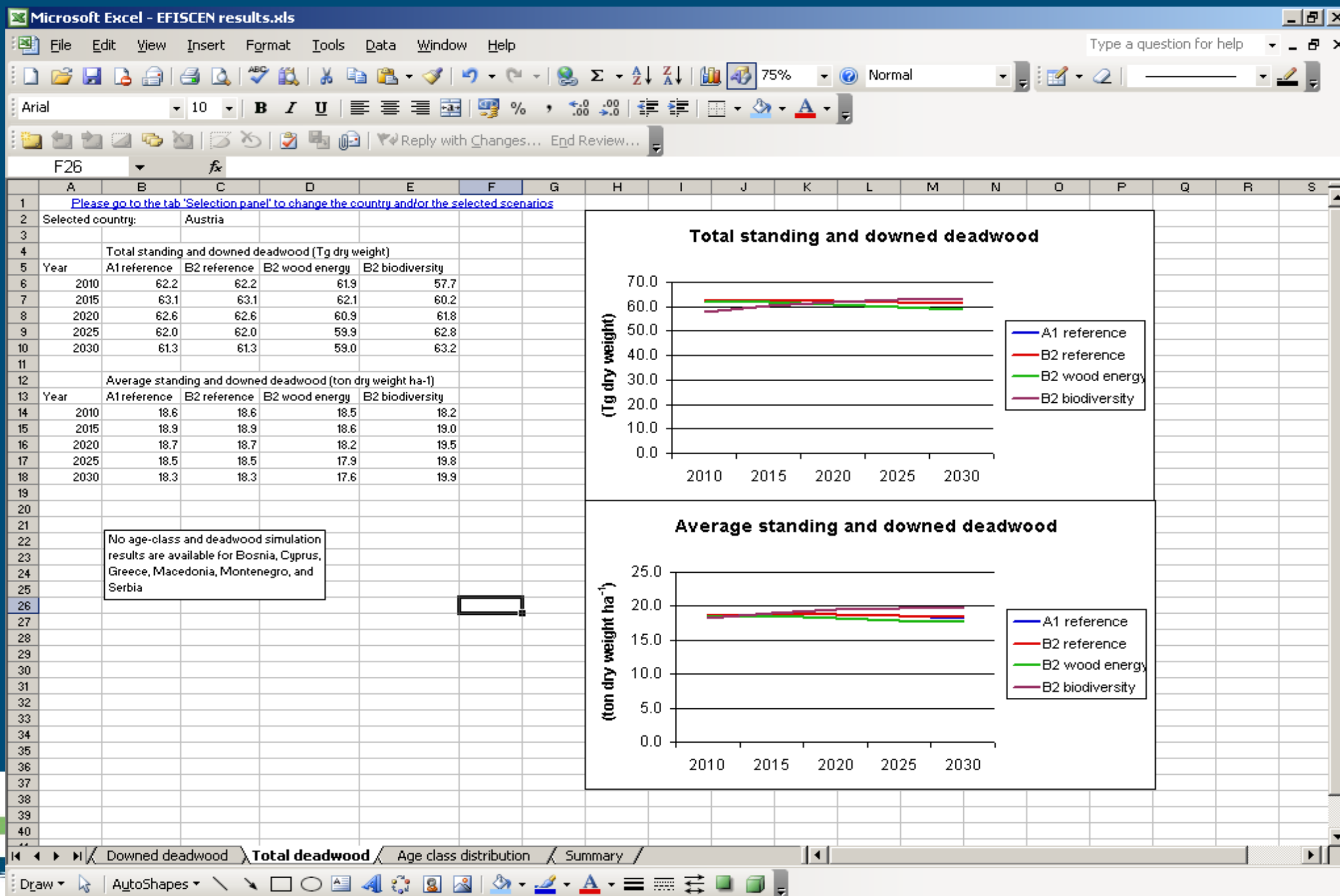
Press the make yo

Countries-Regions Forestry Other woody biomass Material uses Energy uses WRB M m<sup>3</sup> (select) WRB share in % WRB change in %

# Methods – EFISCEN (forest resource model)

- Calculates potential availability of woody biomass from the forest
- Simulates development of forest resources, given the real demand from EFI-GTM

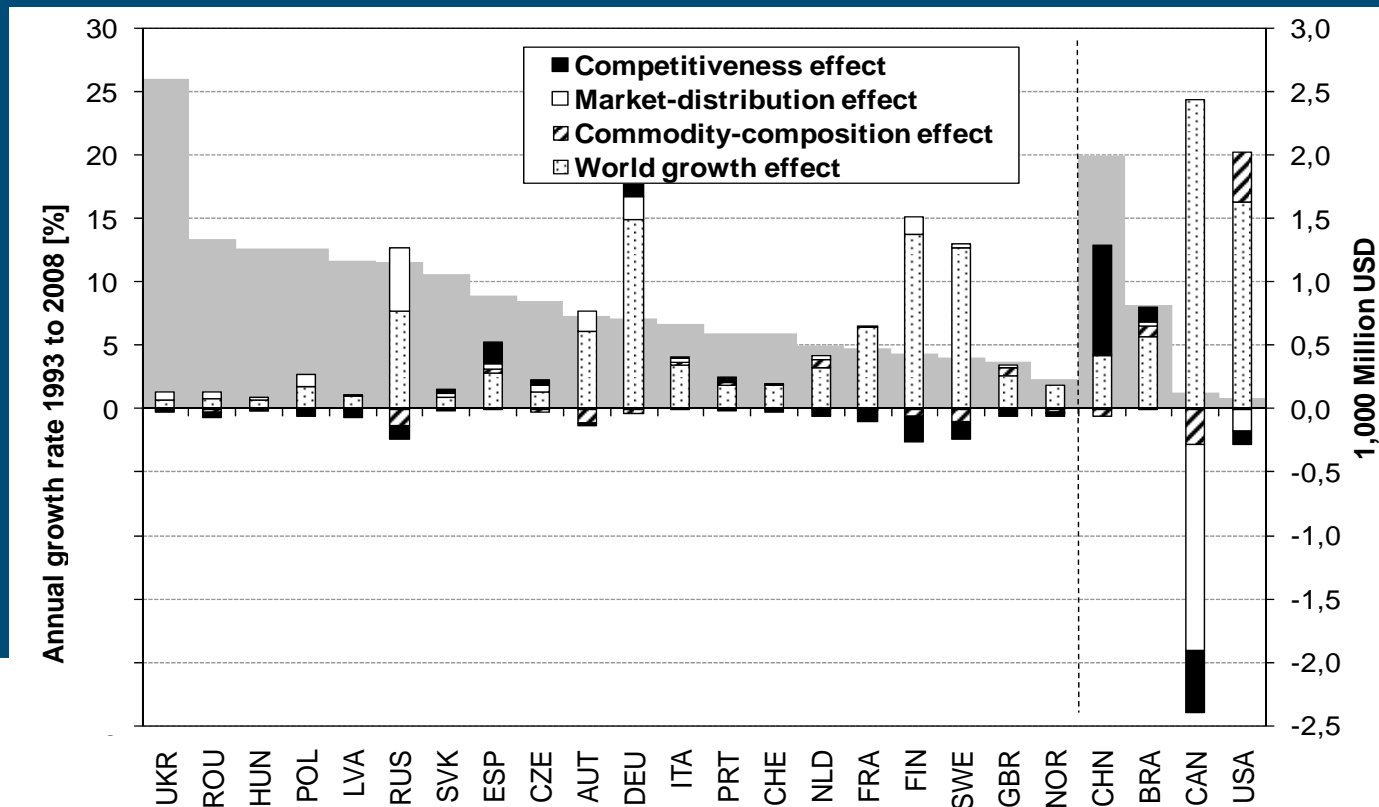
# Excel tool for visualisation of EFISCEN results





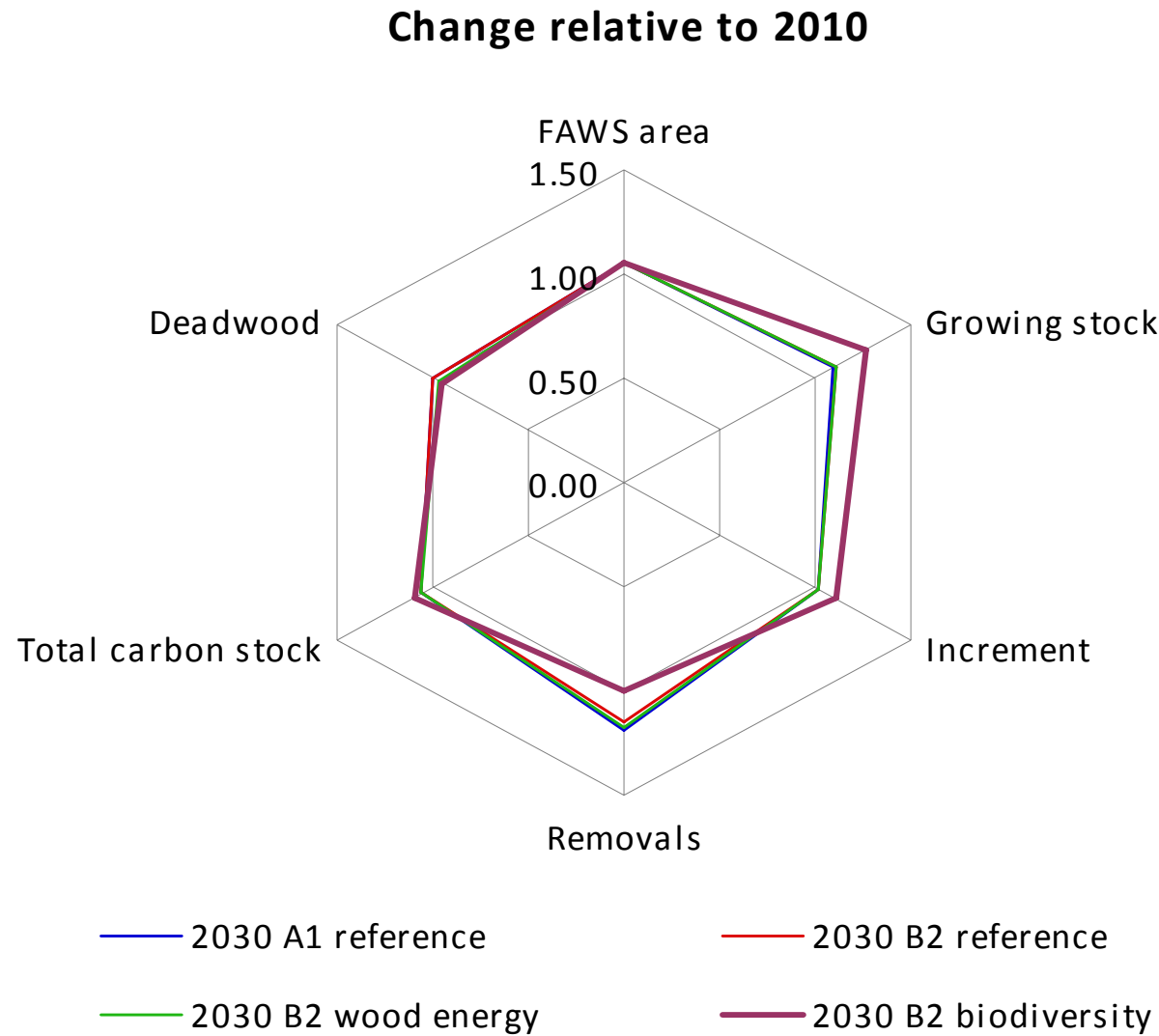
# Methods – competitiveness analysis

- Splits realised changes in trade volumes into different factors (market changes, etc.)
- Is done for the period 1993-2008
- Will be done for EFI-GTM output data for future points in time



# Sustainability assessment

- We w  
from t
- Indica  
mode
- Some  
qualit



# How far are we?

- Baselines ready
- Prioritising wood energy and biodiversity ready
- Innovation and technology: brainstorming done (Jan. 2011)
- Maximising carbon stocks: only EFISCEN work, under way
- Competitiveness analysis 1993-2008 done
- Competitiveness analysis for scenarios to be completed
- Adapting the criteria and indicators framework from SoEF2011 for use in EFSOS II

# Next

---

- Reviewing of results with country correspondents
- Adaptations when needed and possible
- Writing the discussion papers
- Standardised analysis using criteria and indicators
- Lots of writing on the final report
- Toasting on the printed product in Antalya
- Further dissemination

# Lessons learned as reported in the ToS report

- Wide mandate, ambitious goals
- Limited funding
- Excellent cooperation with other projects
- Process is very different from other (FP) research projects
- Competition from wood energy demand is not included in current models

# Your advice on:

---

- The work undertaken so far
- The continued involvement of Team of Specialists members and outlook correspondents in the review and communication of the national modelling results
- Set-up and funding of the EFSOS results
- The lessons learned during the EFSOS studies as recorded in the ToS report to the Working Party.

# Thanks for you attention

© Wageningen UR

