

FOREST RESOURCES ASSESSMENT AND INDICATORS OF SUSTAINABLE FOREST MANAGEMENT IN THE REGION (WA2)

- SoEF 2007 review
- Outputs and Plans 2009-2010
 - *GFRA2010*
 - *State of Europe's Forests 2011*
 - *European forest types*
- ToS on Monitoring SFM



Review of elaboration process, contents, dissemination and use of the MCPFE/UNECE/FAO report State of Europe's Forests 2007

By Roman Michalak and Eve Charles
UNECE/FAO Timber Section

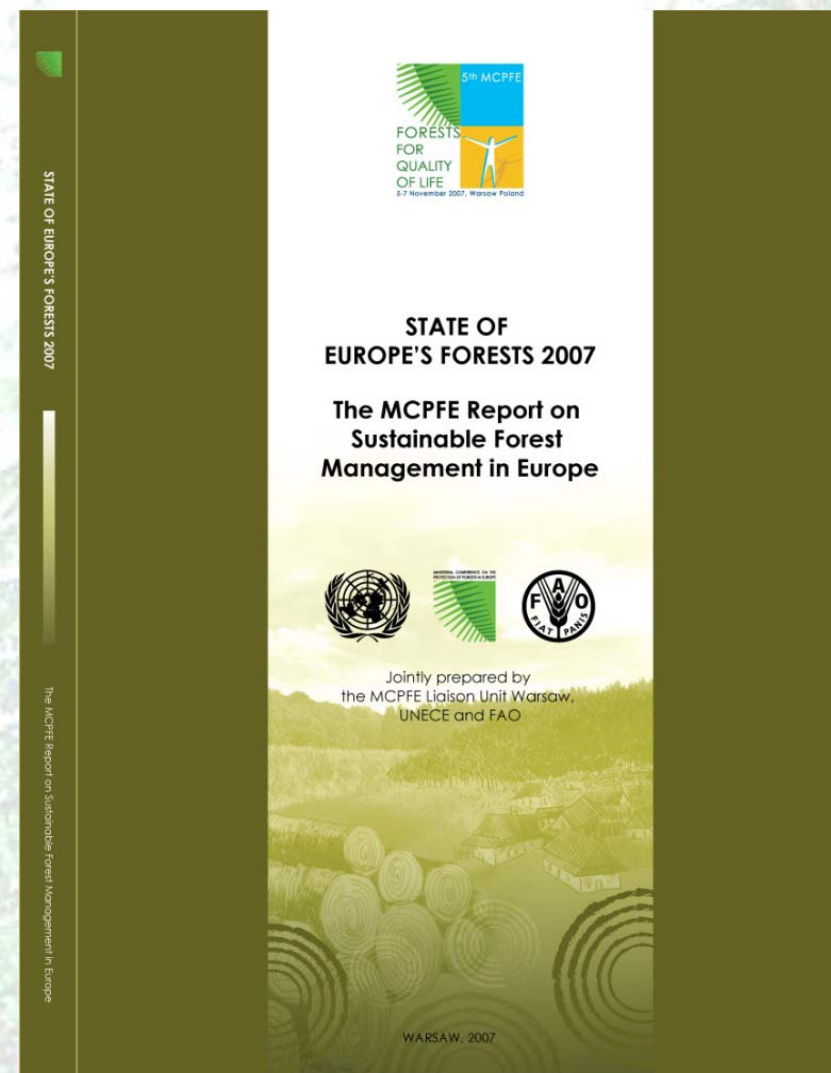


**Joint Working Party on Forest Economics and Statistics,
Geneva, 24-25 March 2010**



SoEF 2007 self-evaluation - components

- Report evaluation - **parent bodies**
- Questionnaire on the report elaboration process, contents and dissemination – **report's producers**
- Questionnaire on the report content, appropriateness and use – **report's users**
- Evaluation of the dissemination – **paper, electronic, database** and visibility of the report – **internet**
- **Conclusions**



Joint Working Party on Forest Economics and Statistics,
Geneva, 24-25 March 2010



SOEF 2007 self-evaluation

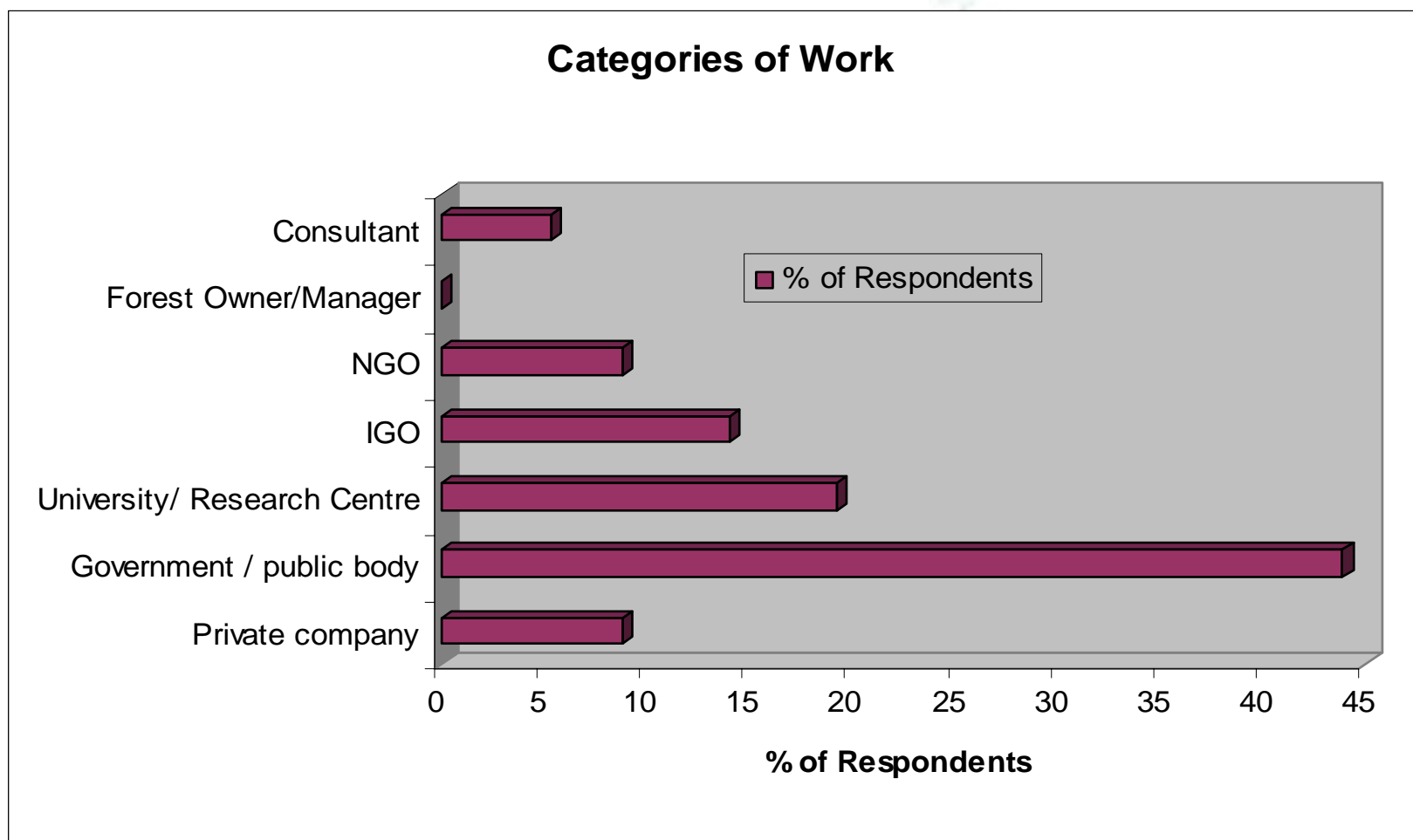
- Questionnaire on the report's content, appropriateness and use – feedback by report's users
- SurveyMonkey, 60 replies, Autumn 2009



Joint Working Party on Forest Economics and Statistics,
Geneva, 24-25 March 2010



Which affiliation best describes your work?



**Joint Working Party on Forest Economics and Statistics,
Geneva, 24-25 March 2010**



What were your needs and expectations from the report?

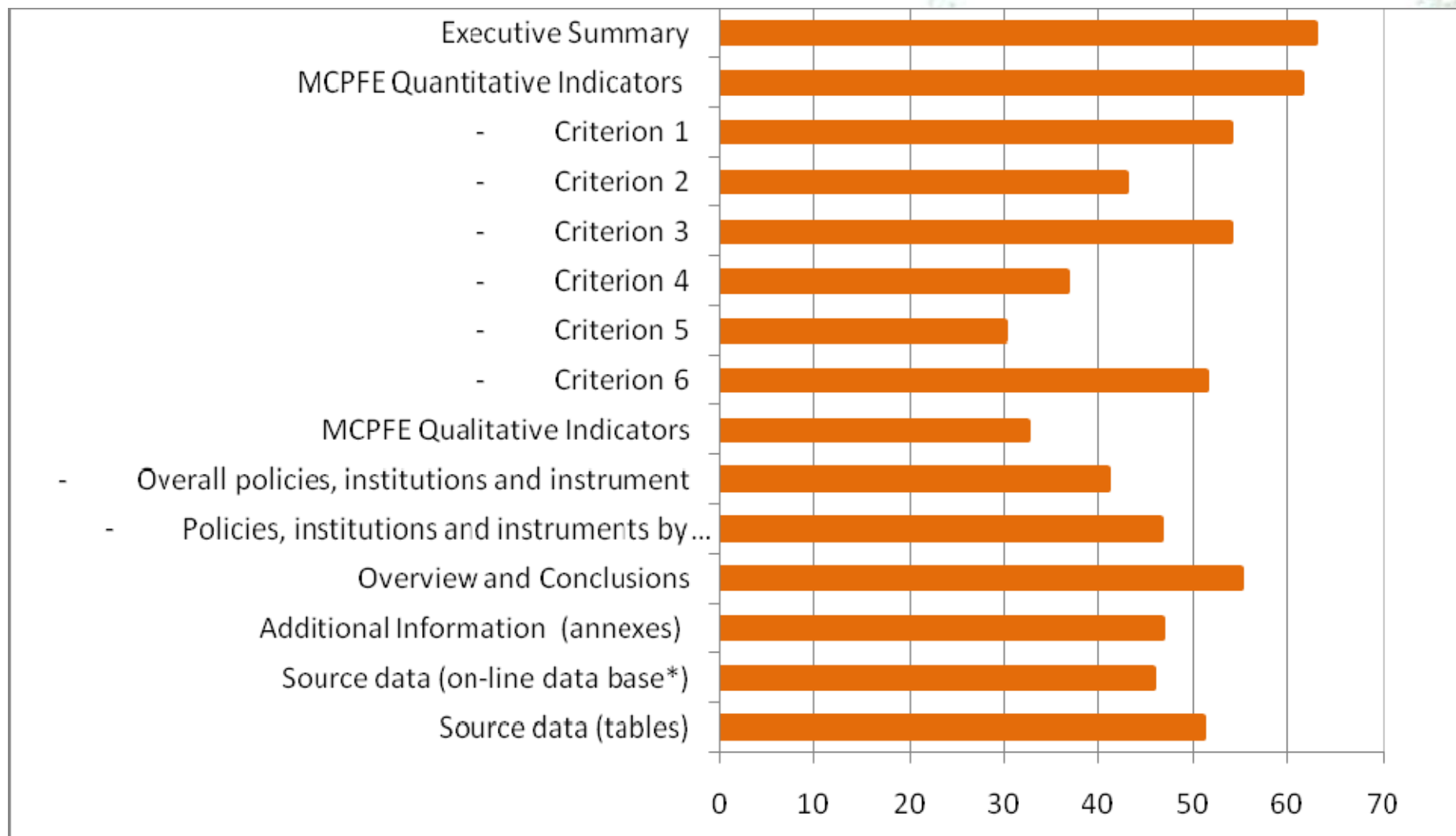
General information on status and trends of forests in Europe	86%
Detailed information on quantitative indicators	64%
Information on sustainable forest management in a specific country or sub-region	45%
Detailed information on qualitative indicators	41%
Information on European forests for use in a wider context	41%
Source data for your own research	39%
Information for decision-making and planning	30%
Other	5%



Joint Working Party on Forest Economics and Statistics,
Geneva, 24-25 March 2010



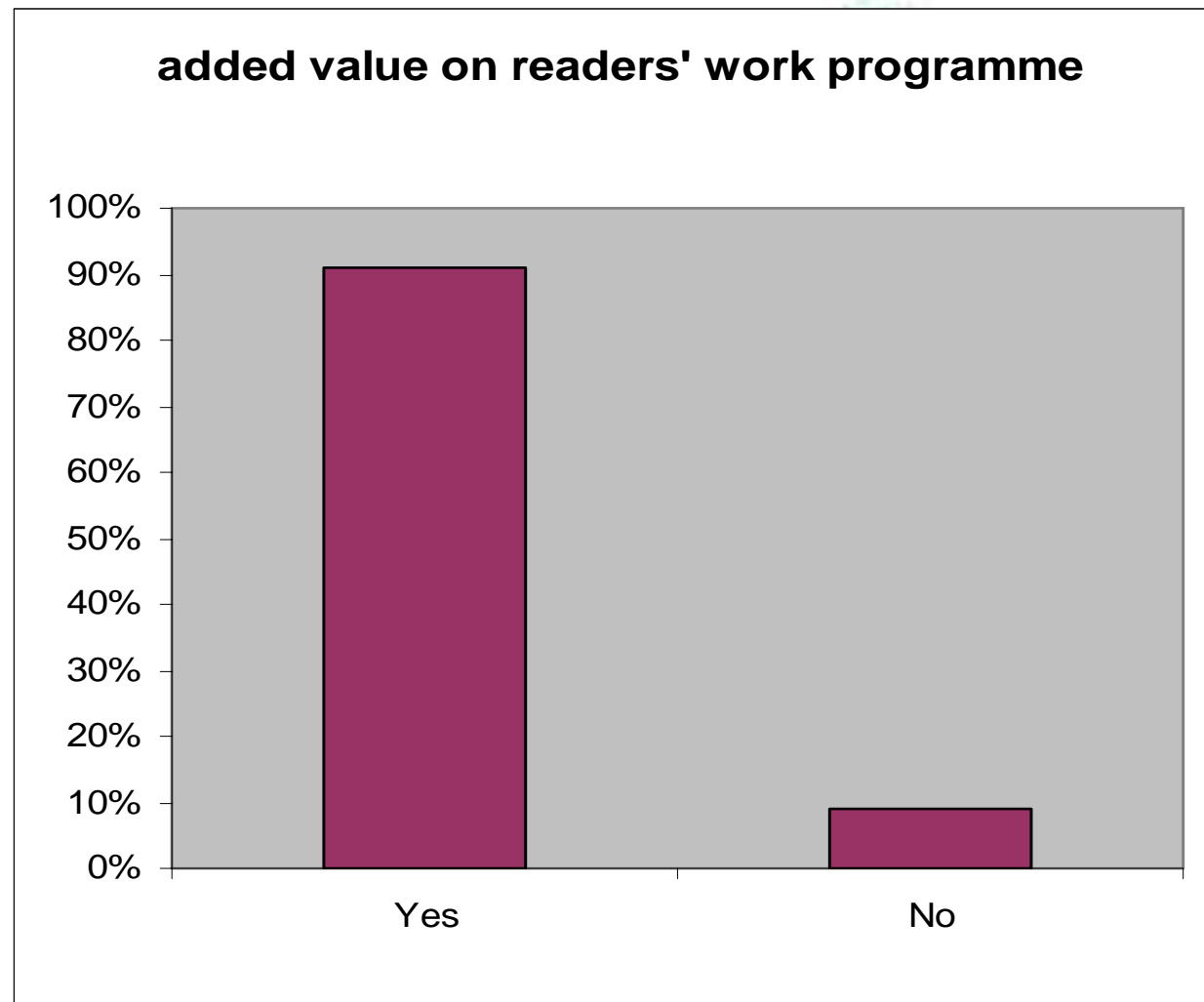
*Which parts of the report were relevant to your work or activity?
Shares of relevant and very relevant.*



**Joint Working Party on Forest Economics and Statistics,
Geneva, 24-25 March 2010**



Has the report added value to your work programme and/or activities?



**Joint Working Party on Forest Economics and Statistics,
Geneva, 24-25 March 2010**



SOEF review

- **Use of the interactive database**

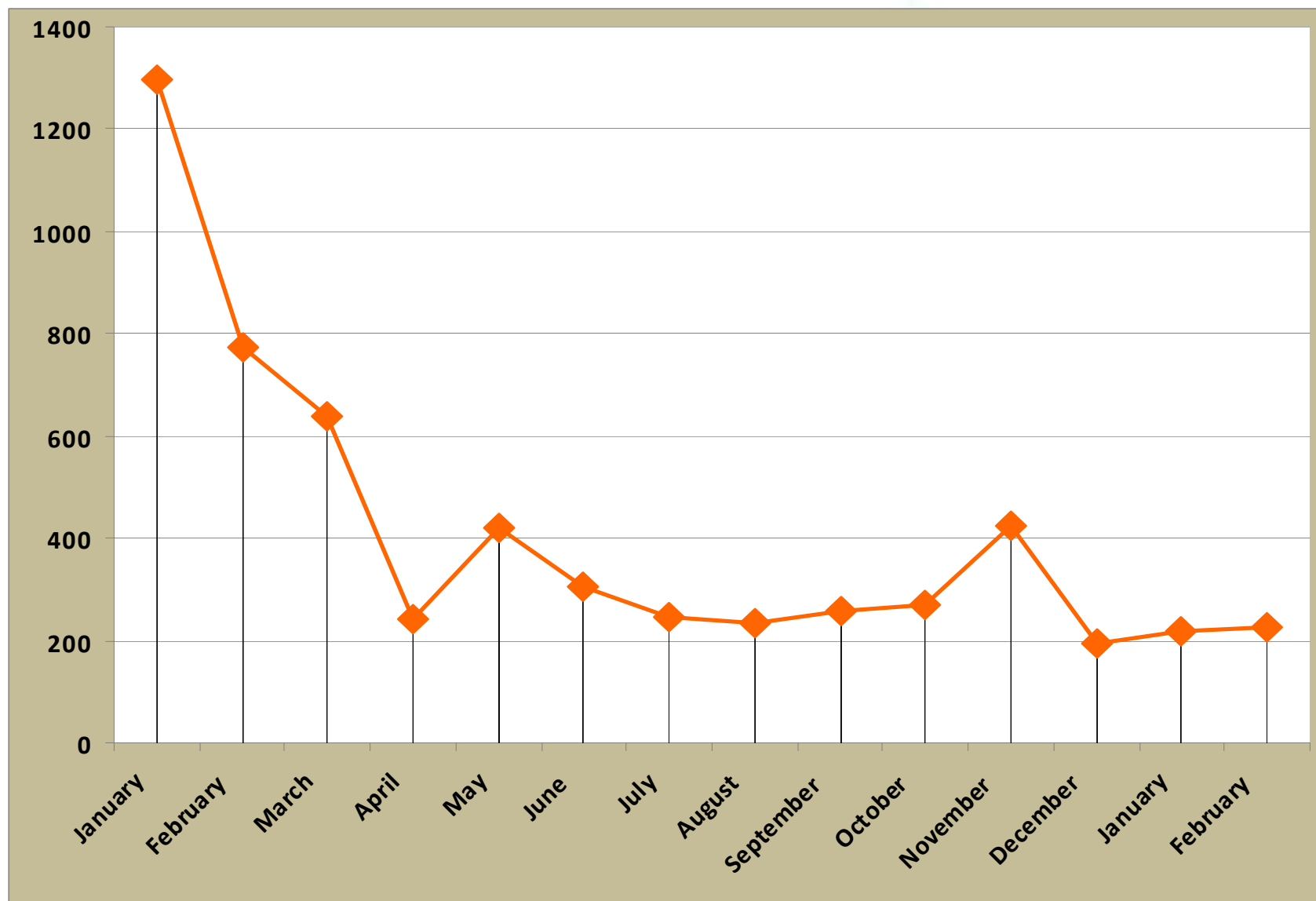
<http://w3.unece.org/pxweb/DATABASE/STAT/Timber.stat.asp>



**Joint Working Party on Forest Economics and Statistics,
Geneva, 24-25 March 2010**



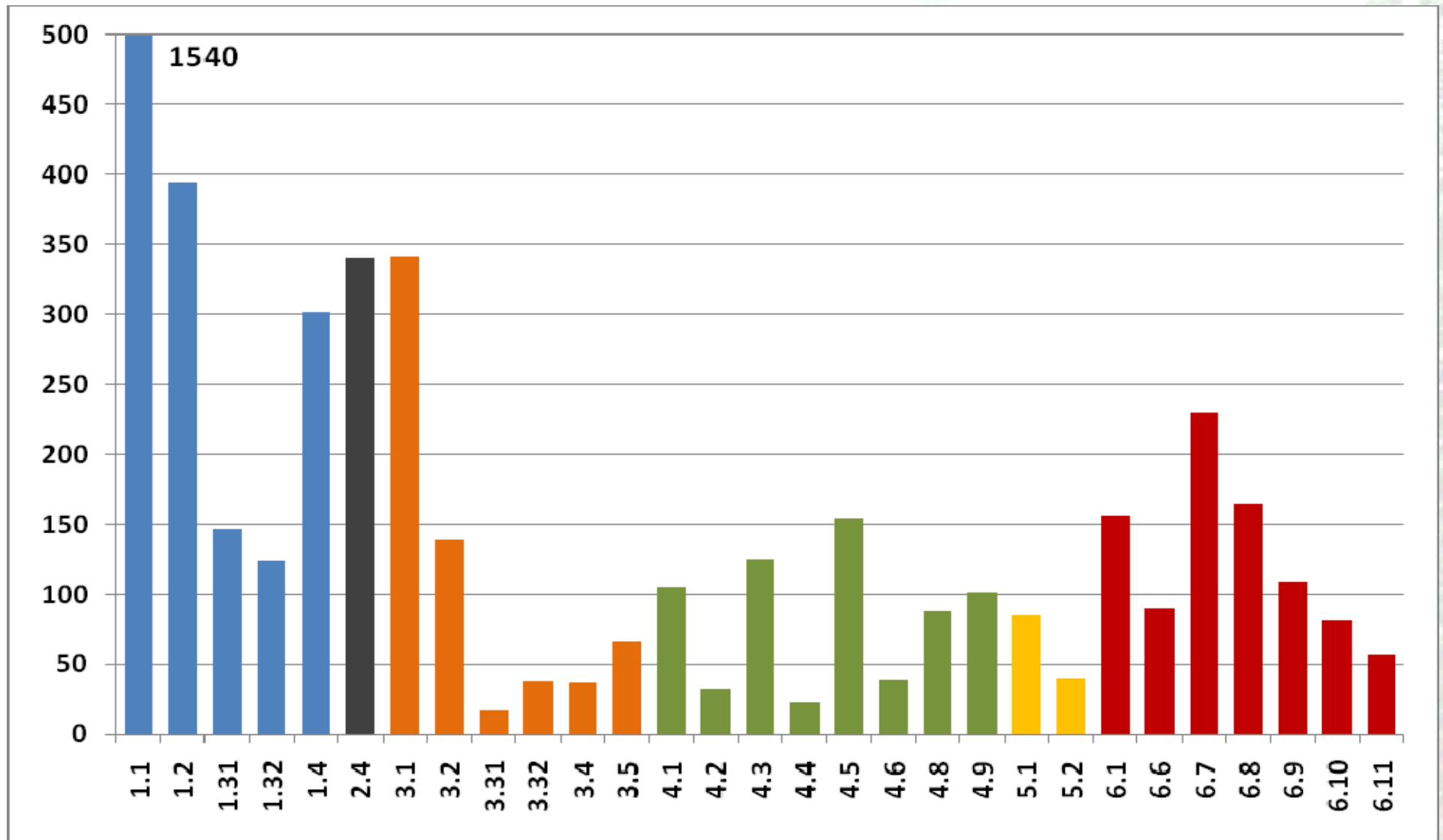
Number of retrievals by month



Joint Working Party on Forest Economics and Statistics,
Geneva, 24-25 March 2010



Number of retrievals by indicator



Joint Working Party on Forest Economics and Statistics,
Geneva, 24-25 March 2010



Conclusions (+)

- report responds to the demand
- overall concept of the report and its parts are of high quality and relevance
- means of production and cooperation are effective and efficient in general
- report was assessed as useful and adding value to the user's work programme and/or activities.



Conclusions (-)

- better communication among process participants, especially during data verification stage
- better coordination between forest reporting processes (SoEF and FRA) and enhanced use of synergies from this cooperation
- better interrelating of the report's parts
- extension of the report's promotion, and inclusion of new, further elaborated products, better suited to the needs and more attractive for new users



The Working Party is invited:

- *to discuss results of the review of the SoEF 2007 reporting*
- *to provide advice on harmonisation between SoEF and FRA reporting in ongoing and future reporting cycles*



Joint Working Party on Forest Economics and Statistics,
Geneva, 24-25 March 2010

