

Work Area 1 - Statistics

By Alex McCusker

UNECE/FAO Timber Section



Joint Working Party on Forest Economics and Statistics,
Geneva, 24-25 March 2010



Overview

- Work accomplished 2009
- Status of Replies & Indicators of Achievement
- International Process & JFSQ2009
- Review of Forecasts for 2008
- Areas of concern



Work Accomplished

- JFSQ issued and data processed
- FPAMR data published
- TCQ issued and data processed
- Forecasts published
- FPS provisional July
- FPS final in process
- Price data continues



Status of Replies

Questionnaire		Year Questionnaire Sent			
		2006	2007	2008	2009
JFSQ	JQ1 (production) - replies	42	39	40	41
	% of cells filled (of 66)	65.3	83.4	65.5	67.4
	JQ2 (trade) - replies	40	38	40	39
	% of cells filled (of 216)	90.6	94.8	94.4	92.9
	JQ3 (sec. prod. trade) - replies	15+20(EU)	12+21(EU)	10+25	9+25
	% of cells filled (of 44)	75.7	72.9	83.3	90.3
	EU/ECE1 (species trade) - replies	11+23(EU)	13+23(EU)	9+24 (EU)	9+24
	% of cells filled (of 88)	91.8	90.0	76.7	67.1
TCQ	TC1 (roundwood forecast) - replies	31	31	30	30
	% of cells filled (of 21)	94.3	87.2	93.9	89.8
	TC2 (product forecast) - replies	31	30	30	29
	% of cells filled (of 45)	95.1	87.1	94.6	94.3

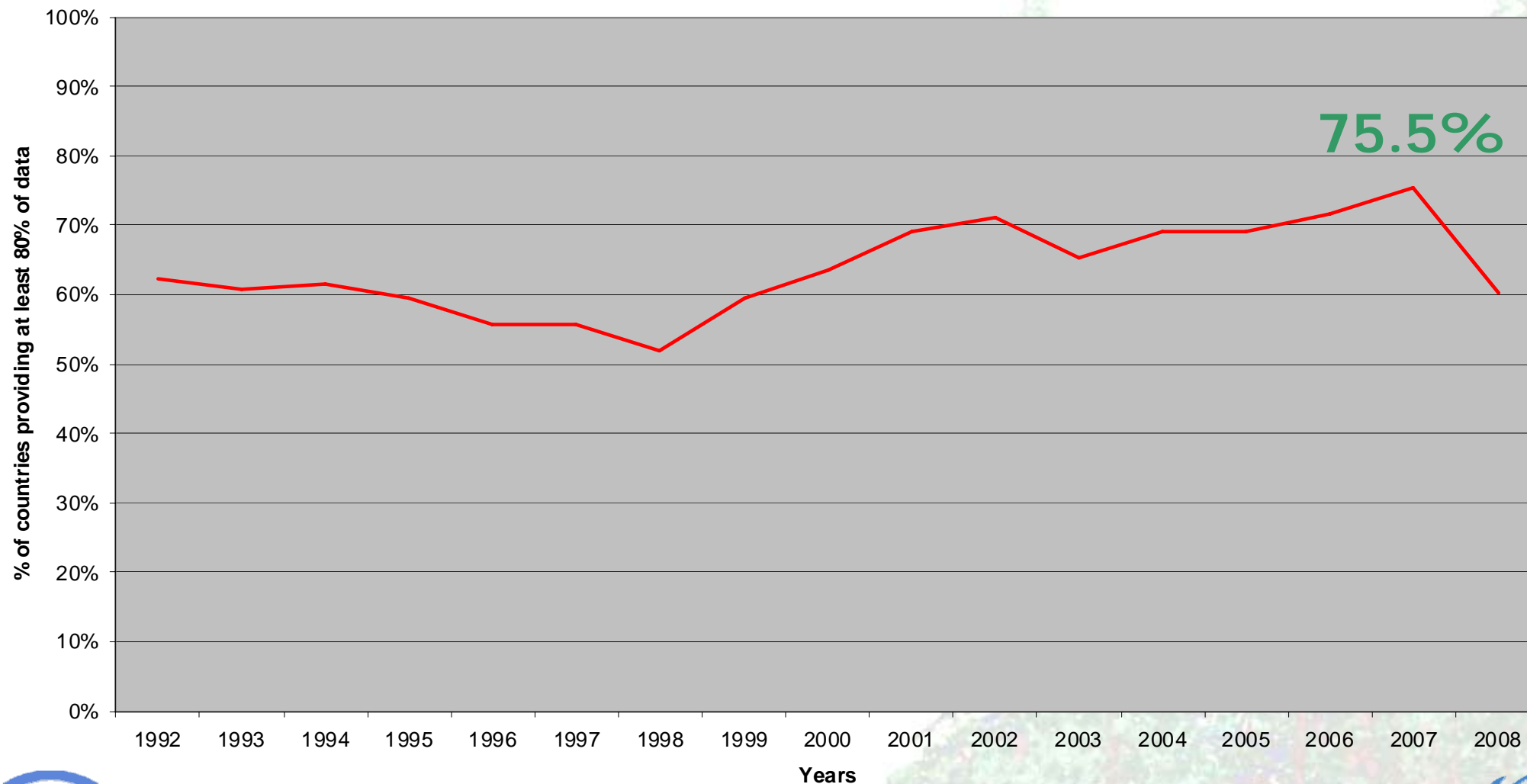


Joint Working Party on Forest Economics and Statistics,
Geneva, 24-25 March 2010



Indicators of Achievement

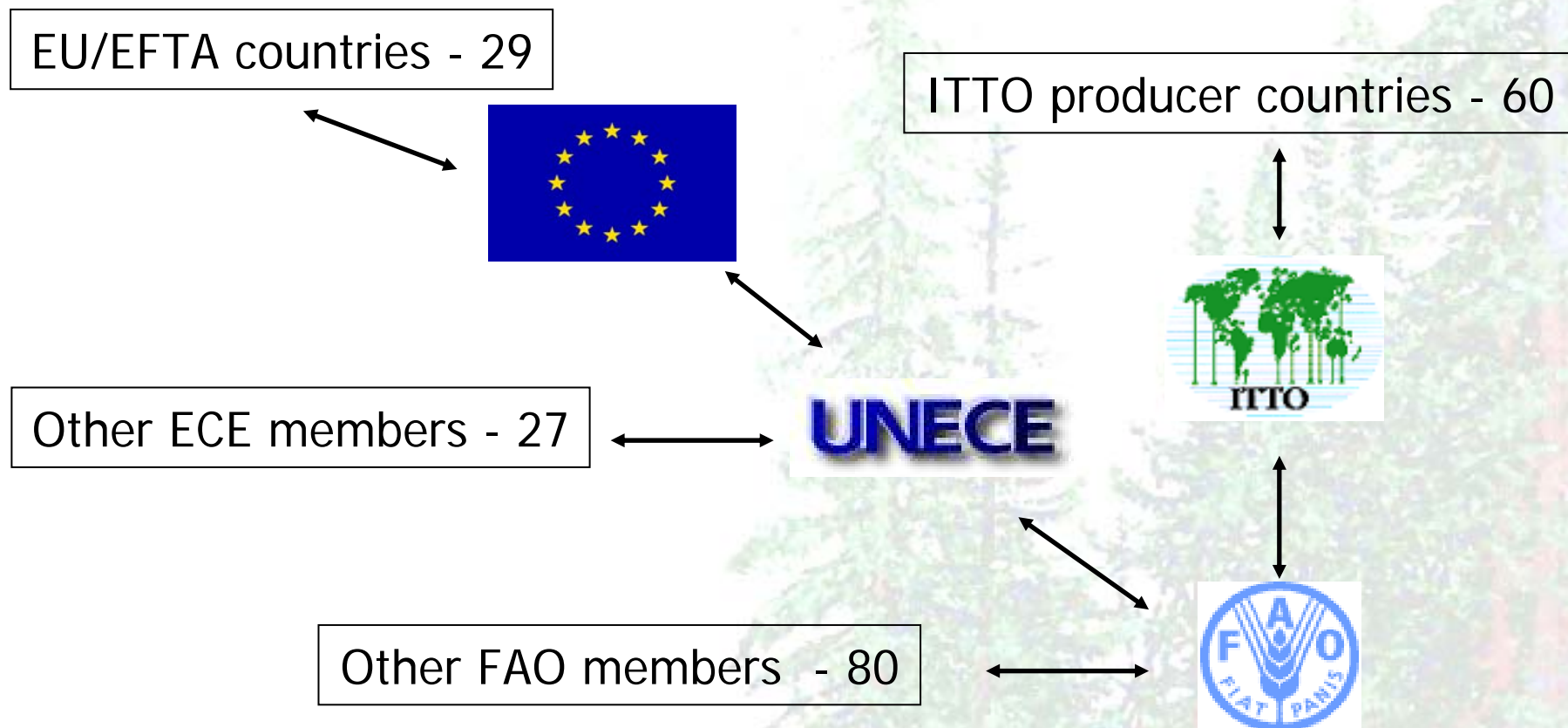
Country Reply to JFSQ Data



Joint Working Party on Forest Economics and Statistics,
Geneva, 24-25 March 2010



International cooperation continued as in past



Joint Working Party on Forest Economics and Statistics,
Geneva, 24-25 March 2010



Issues in 2009

- Primary problem seems to be sequencing our data exchange in a way that everybody gets the most recent data as soon as possible
- Dealing with confidentiality
- Minimize processing time



Outcomes of 2010 IWG meeting

- Overall decline at global level in replies
- Improved data systems
- Multiple processing of same data due to incompatibility between systems and timing problems. Worked on revising data exchange deadlines.
- Agreement on including pellets (item 4.1?) as soon as HS code becomes used (2012)
- Reworked definition of item 4
- ITTO need to get tropical removals for non-ITTO members (no effect on UNECE region)
- Agreements on status codes used between organizations
- **Explore issue of HS unit (kg) vs JQ unit (m3) for items 3 and 4 (chips, particles, residues) – should we standardize on mt**
- **Woodfuel underbark should be more clearly stated**

Joint Working Party on Forest Economics and Statistics,
Geneva, 24-25 March 2010

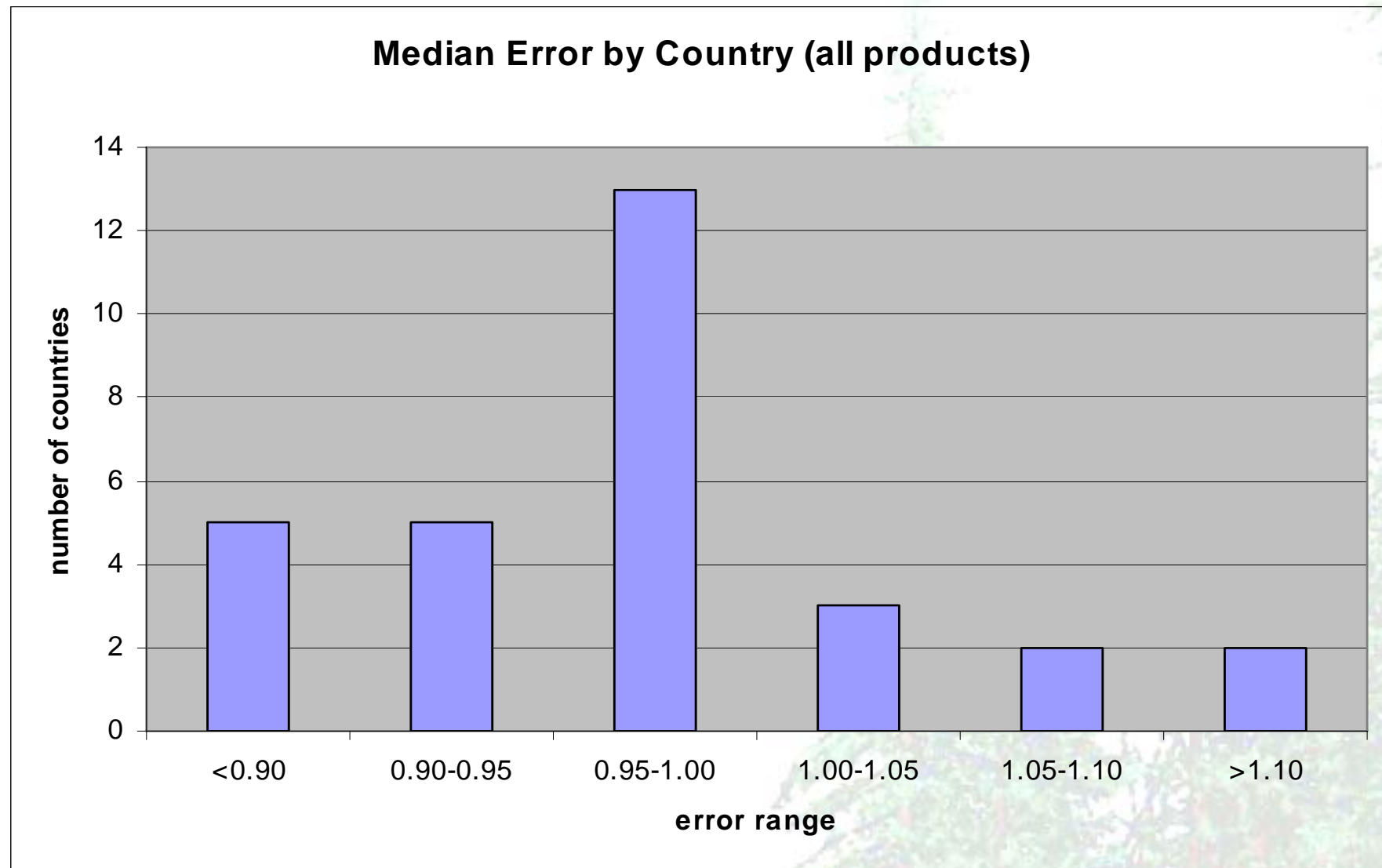


Evaluation of 2008 forecast (1)

- Used forecasts made in Sept 2008 for Timber Committee meeting in October
- Compared to latest 2008 data available (Jan 2010)
- Used ratio (actual data / forecast) – e.g. 0.90 means actual result was 90% of forecast



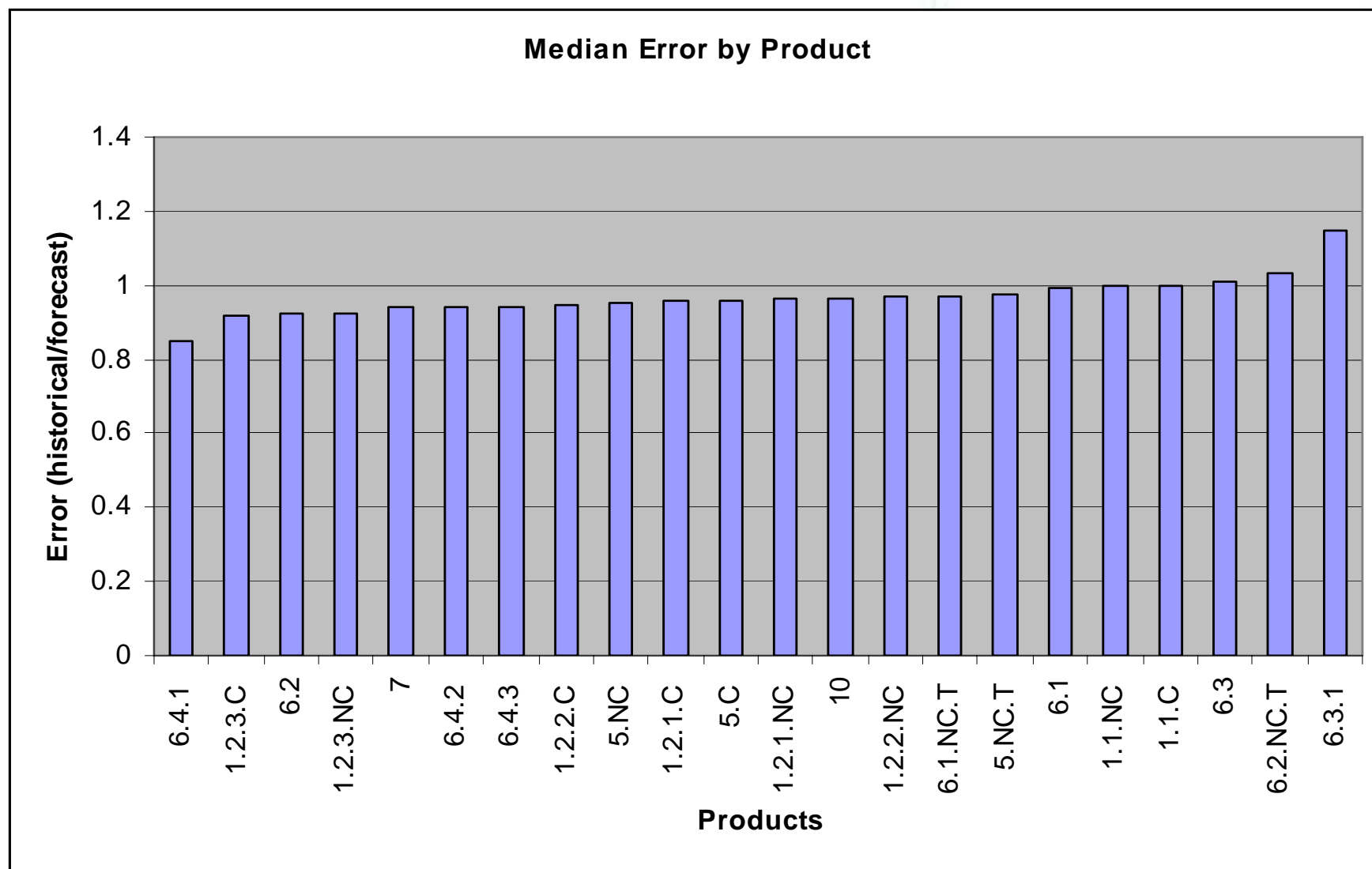
Evaluation of 2008 forecast (2)



**Joint Working Party on Forest Economics and Statistics,
Geneva, 24-25 March 2010**



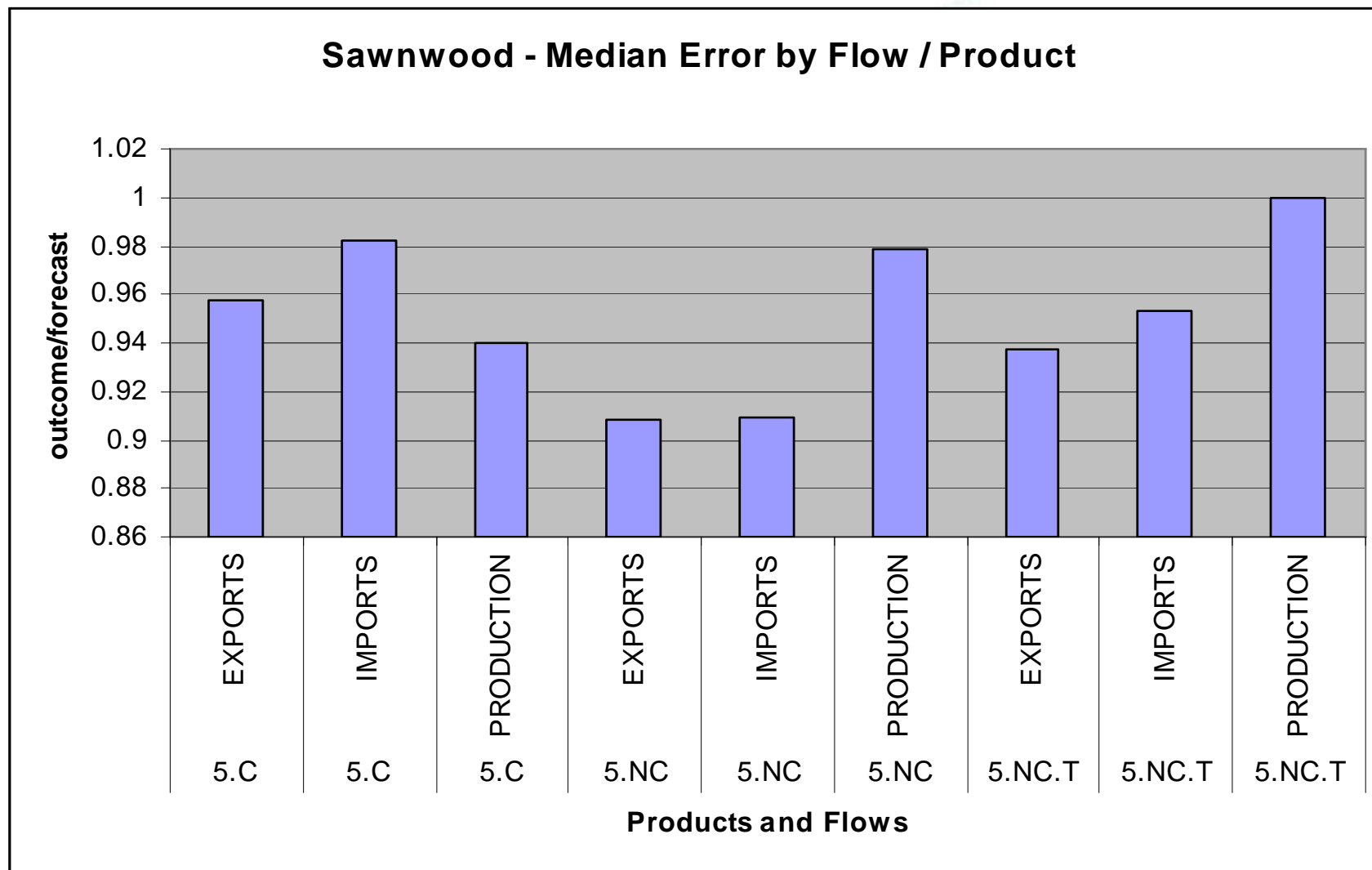
Evaluation of 2008 forecast (3)



Joint Working Party on Forest Economics and Statistics,
Geneva, 24-25 March 2010



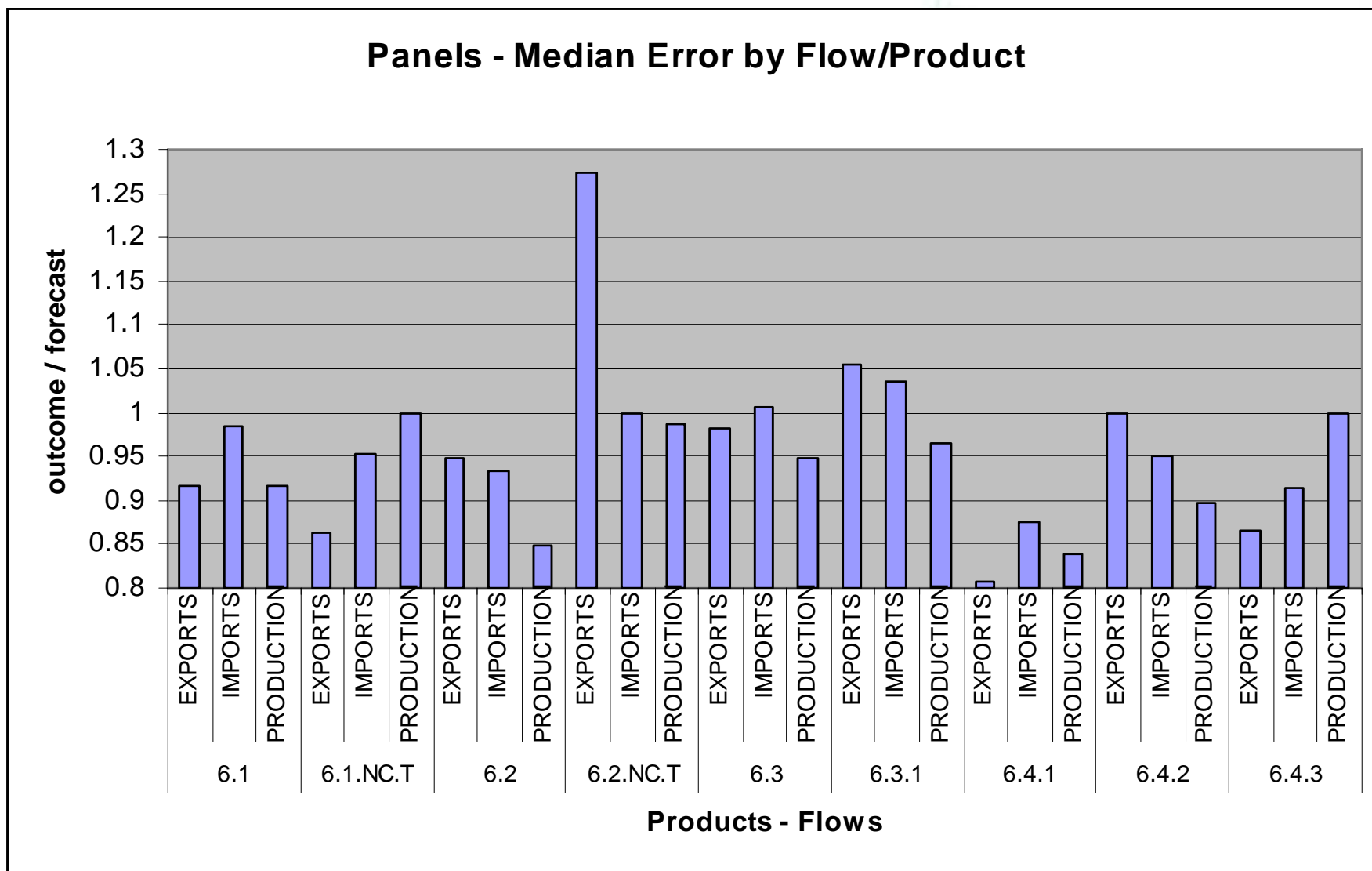
Evaluation of 2008 forecast (4)



Joint Working Party on Forest Economics and Statistics,
Geneva, 24-25 March 2010



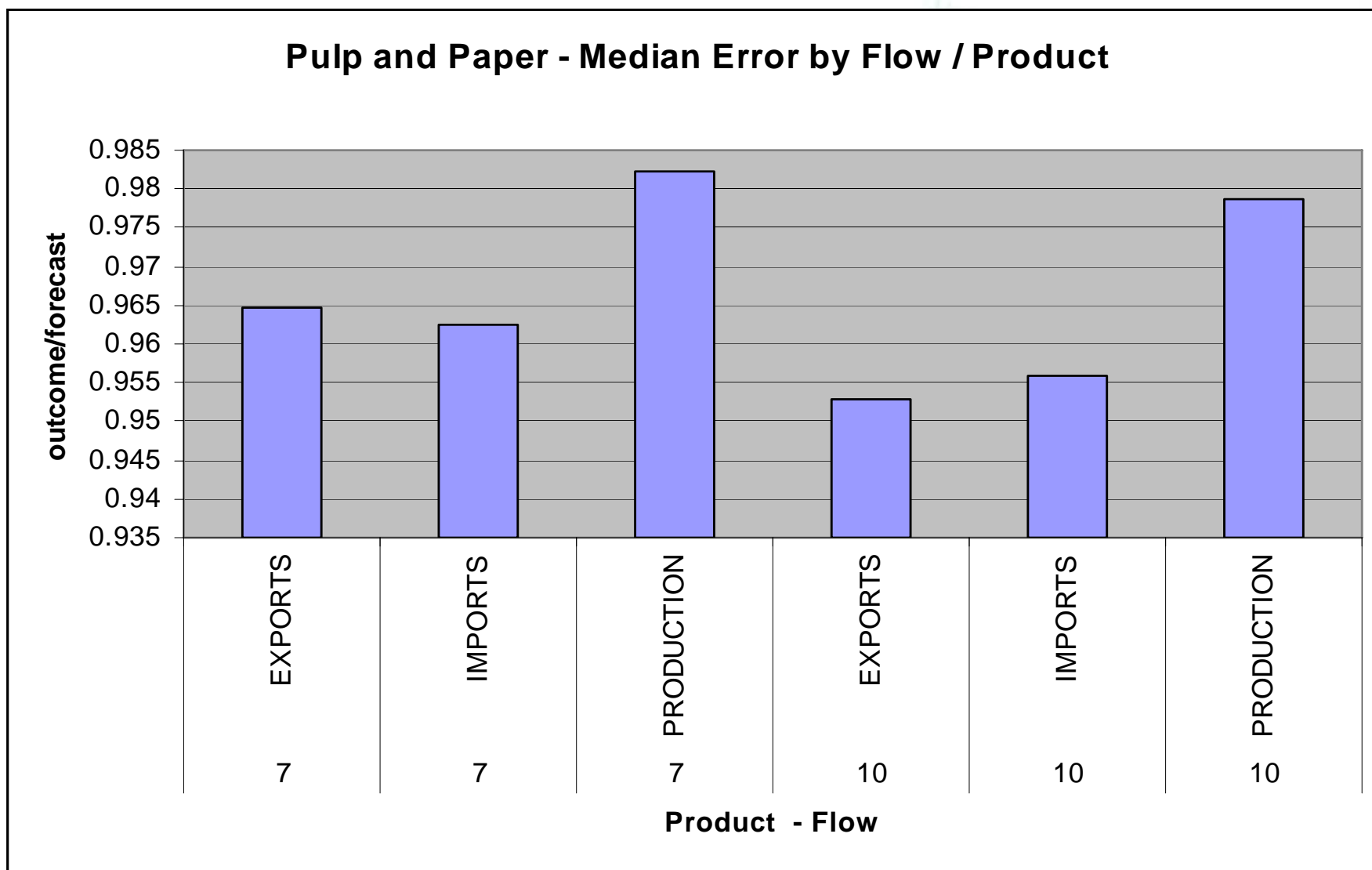
Evaluation of 2008 forecast (5)



Joint Working Party on Forest Economics and Statistics,
Geneva, 24-25 March 2010



Evaluation of 2008 forecast (6)



Joint Working Party on Forest Economics and Statistics,
Geneva, 24-25 March 2010



Areas of concern

- Data exchange – need to facilitate processing from partners and highlight questions faster
- Not publishing species trade and secondary products
- Time available for data work, both at country level and organization level



Questions from document 6-2

- Para. 4 - We would ask countries that are not currently supplying price statistics and that would be in a position to supply them to please consult with the secretariat on the feasibility, usefulness and modalities of providing current and representative price information of forest products.
- 9. The Working Party is invited to provide its opinion on the issue of whether we should continue to collect these data [secondary and species], bearing in mind that when these statistics have been published there appeared to be a demand for them. A temporary in-kind loan of staff expertise from a country or organization would enable updating the statistics on secondary products and trade by species.
- 16. The Working Party is invited to comment on the loss of statistical information due to confidentiality.
- 20. The Working Party is invited to review the activities carried out this year and planned for the coming year

