

Forest Resources Assessment 2010 & Contribution to MCPFE 2007

FRA and C&I for SFM

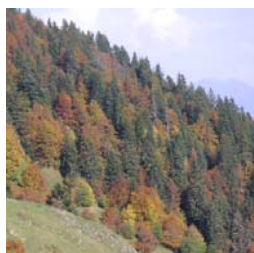
by Arvydas Lebedys

FAO Forestry Department

Structure of the presentation



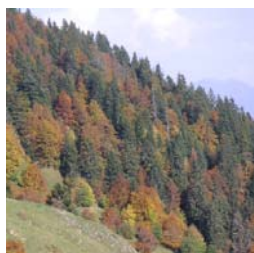
- Developments in FRA 2010 process



- FAO HQ's contribution to MCPFE report



FRA 2010 process

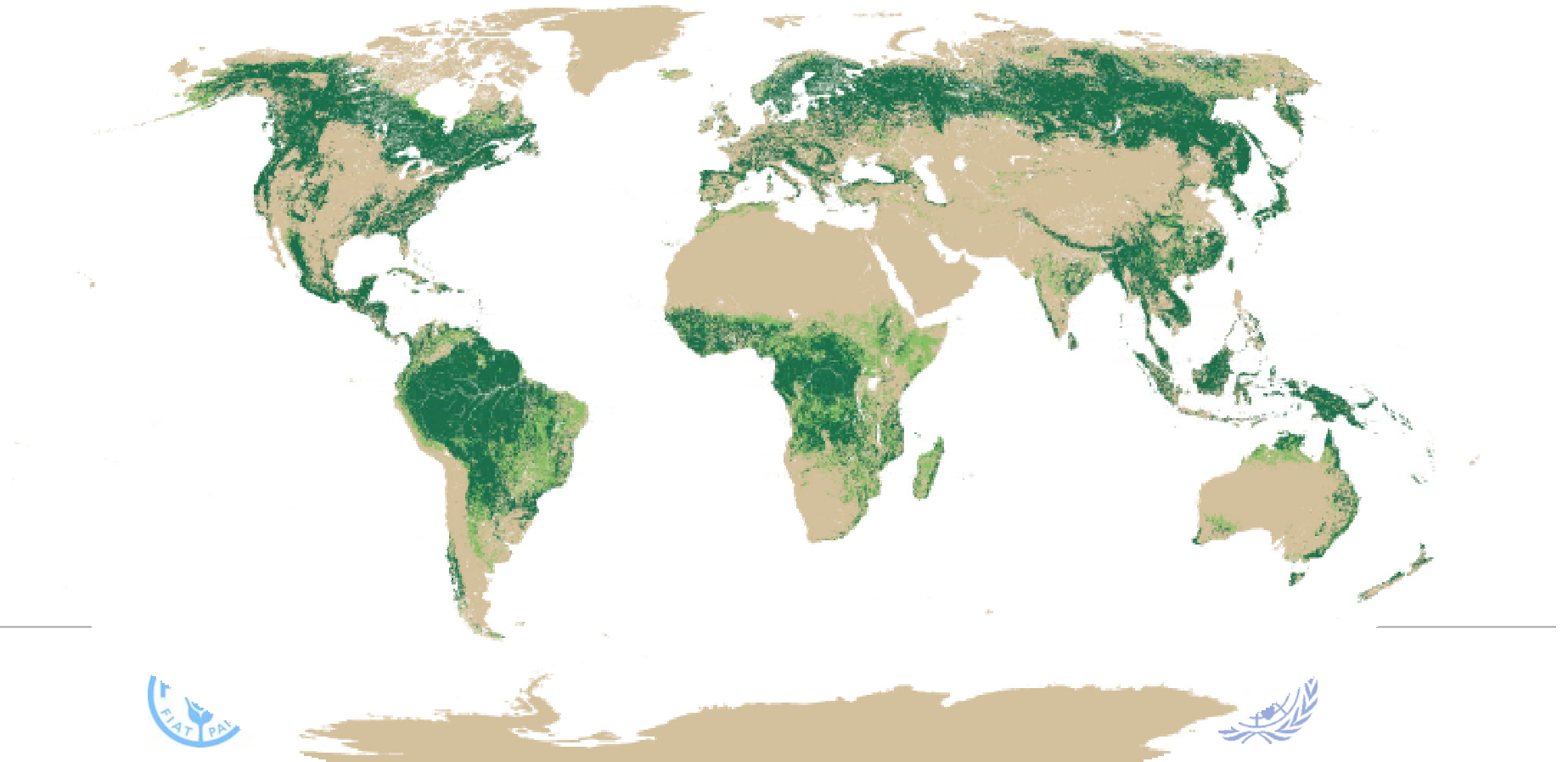
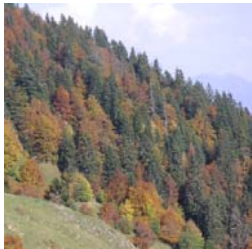


- Expert consultations on-going
 - Kotka V meeting (June 2006)
 - FRA Advisory Group (January 2007)
- Remote Sensing Survey

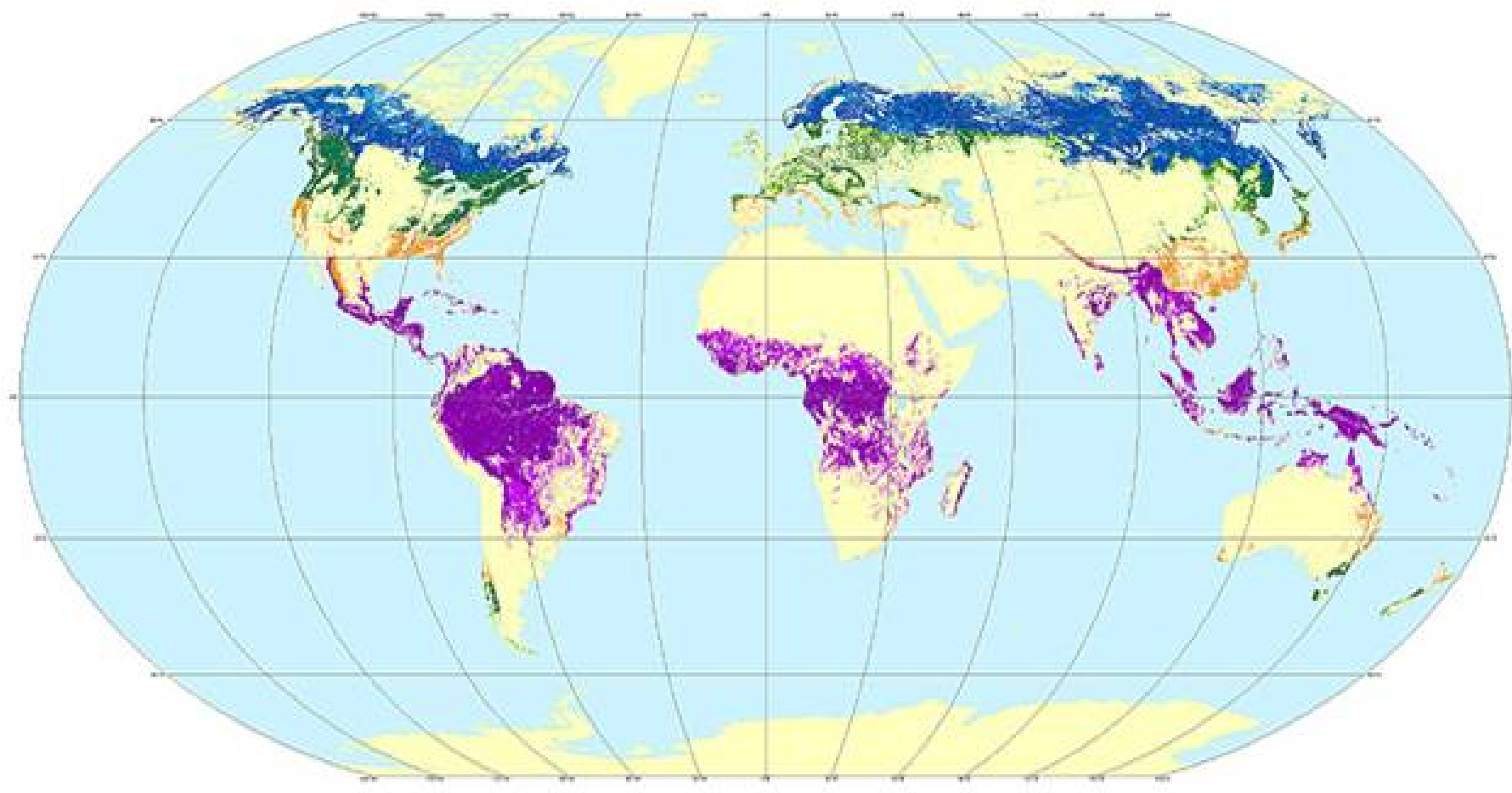
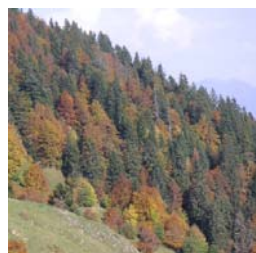


FRA 2010 Remote Sensing Survey

- Distribution of forests
- Trend statistics
- Regional, biome & global level



Distribution of forests

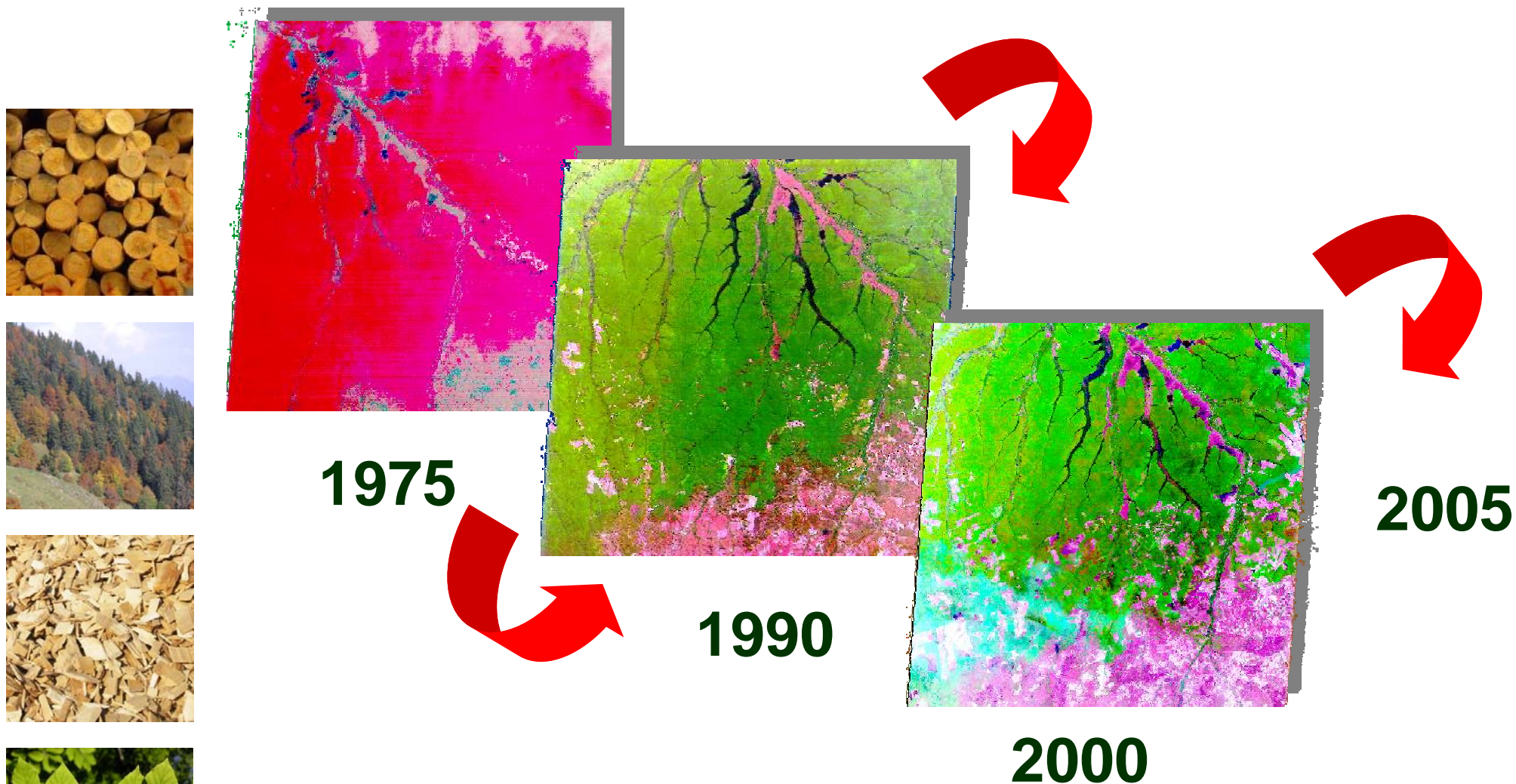


Working Party on Forest Economics and Statistics

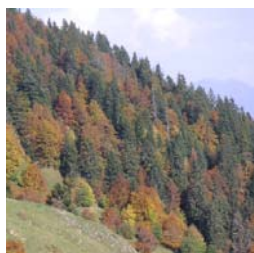
29th Session, 20 - 22 March 2007, Geneva



Trend statistics



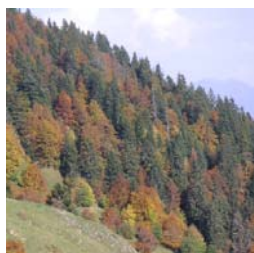
FRA 2010 next steps



- Update list of national correspondents
- Review of draft tables and plans for RSS
- Preparation of guidelines
- Launch of FRA 2010
- Regional workshops
- 2008-2009: Bulk of work for NCs
- 2010: Report preparation



FAO & MCPFE 2007 report



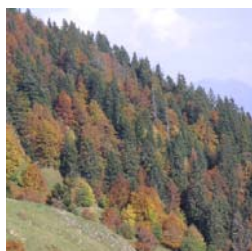
- MCPFE C&Is database:
 - provision of FRA 2005 data
 - set-up, design and hosting
 - quantitative analysis of 450 variables
- Guidelines to the authors for interpretation of results and analysis
- Generation of maps (under discussion now)
- Coordination team (Mette Wilkie)
- Lead author – socio-economic chapter (Arvydas Lebedys)



FAO & MCPFE 2007 report

■ What conclusions from such data?

Example: Forestry sector's contribution to GDP



	Forestry			Wood industry			Pulp&Paper ind.		
	1995	2000	2005	1995	2000	2005	1995	2000	2005
Albania									
Andorra									
Austria	759.3	0.5	693.6	0.4					
Belarus									
Belgium	146.8	0.1	120.0	0.1					
Bosnia & Hercegovina									
Bulgaria			38.4						
Croatia									
Cyprus									
Czech Republic				340.6	0.9	511.3	0.9	796.1	0.9
Denmark				579.0	0.5	706.6	0.5	936.3	0.5
Estonia				24.4	1.0			33.1	1.3
Finland	2029.8	2.3	2578.8	2.2				5825.4	6.7
France	3158.7	0.3	3181.5	0.2				17030.0	1.3
Georgia									
Germany				8768.0	0.5	8180.0	0.4	30593.9	1.8
Greece	120.3	0.1	186.6455 (e)					34030.0	1.8
Holy See								940.2	0.9
Hungary									
Iceland				173.3	0.6	209.4	0.5	390.2	1.3
Ireland								557.1	1.3
Italy	357.6	0.0	386.8	0.0					
Latvia				144.2	0.3	315.8	0.3	1415.8	3.1
Liechtenstein				4672.7	0.6	6238.7	0.6	11353.8	1.5
Lithuania						200.6	2.6	14392.7	1.4
Luxembourg	13.7	0.1						91.6	1.2
Malta									
Moldova, Republic of								71.8	1.6
Monaco								146.7	1.3
Netherlands								122.0	0.9
Norway								57.0	1.5
Poland									
Portugal	371.1	0.5	807.3	0.8				62.5	1.6
Romania									
Russian Federation									
Serbia & Montenegro									
Slovak Republic									
Slovenia	60.9	0.5	64.7	0.4					
Spain	782.3	0.2	788.7	0.1					
Sweden	2227.9	1.3	1909.1	0.8					
Switzerland									
Turkey									
Ukraine									
United Kingdom	282.3	0.0	265.4	0.0					

TOTALS FOR MCPFE REGION ???



Working Party on Forest Economics and Statistics

29th Session, 20 - 22 March 2007, Geneva



THANK YOU!