

Introduction to GSIM

Jenny Linnerud (Statistics Norway)



jal@ssb.no



Agenda for Introduction to GSIM

- What is GSIM?
- Relationship between GSIM and GSBPM
- Top-level information object groups
- More information on GSIM



Modernisation

- Modernisation of statistics can be supported by:
 - Reuse and sharing of methods, components, processes, metadata and data
- Generic Statistical Information Model (GSIM) is the first internationally endorsed reference framework for statistical information
 - by statistical organisations for statistical organisations
- This overarching conceptual framework plays an important role in modernising, streamlining and aligning the standards and production associated with official statistics, at both national and international levels.



What is GSIM?

- It is a reference framework of internationally agreed definitions, attributes and relationships that describe the pieces of information used in the production of official statistics (information objects).
- This framework enables generic descriptions of the definition, management and use of data and metadata throughout the statistical production process.



Developing GSIM -> v1.0 2012

WHO WAS INVOLVED?



17 different organisations



Top-level information object groups

- User needs
- The structure of a statistical program, process steps, methods, rules
- Execution of the process

- How is data structured, what format is it in, where is it stored
- Reference metadata - documentation

Reusable attributes for information objects, identity, versioning etc

Base

Business

Exchange

Structure

Concept

The information that comes in and out of the organisation, exchange channels, provision agreements.

Statistical content - definitions of concepts, variables, populations, unit types
The meaning of codes; statistical classifications, code lists

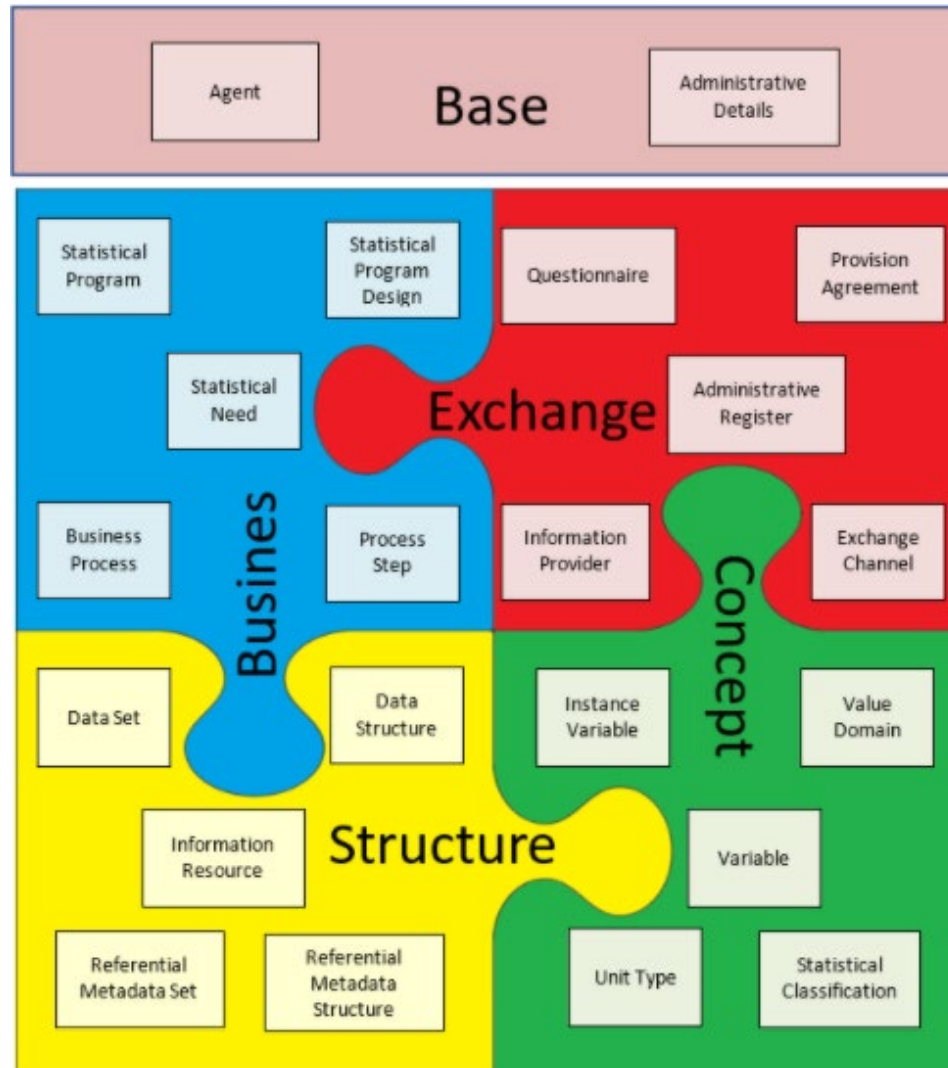


4 top-level groups

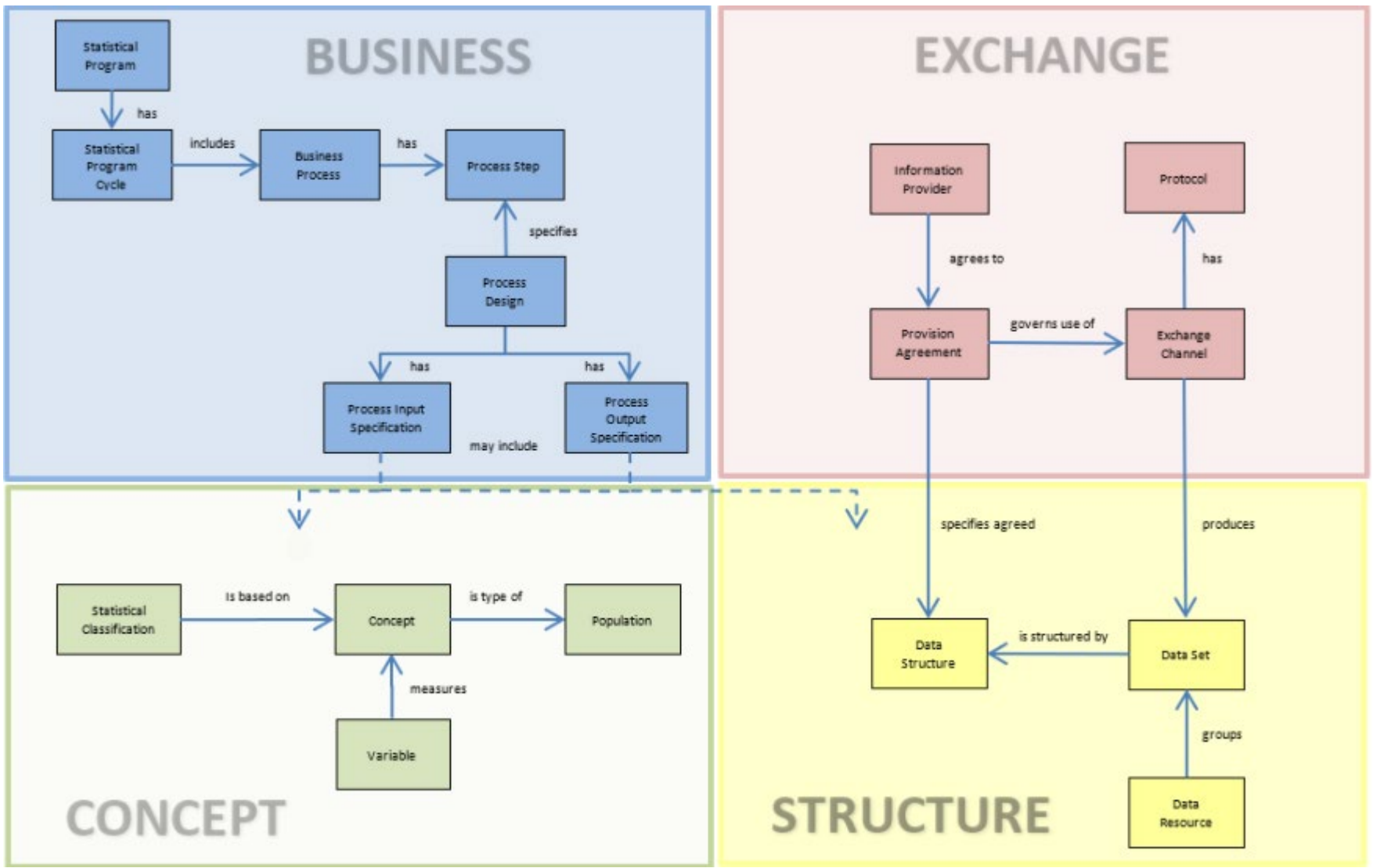
- The **Concept** group is used to define the meaning of data, providing an understanding of what the data are measuring.
- The **Structure** group is used to structure information throughout the statistical business process.
- The **Business** group is used to capture the designs and plans of *Statistical Programs*, and the processes undertaken to deliver those programs. This includes the identification of a *Statistical Need*, the *Business Processes* that comprise the *Statistical Program* and the *Assessment* of them.
- The **Exchange** group is used to catalogue the information that comes in and out of a statistical organisation via *Exchange Channels*. It includes information objects that describe the collection and dissemination of information.



Simplified view of GSIM information objects



GSIM information objects that tell a story



Benefits of GSIM experienced internationally

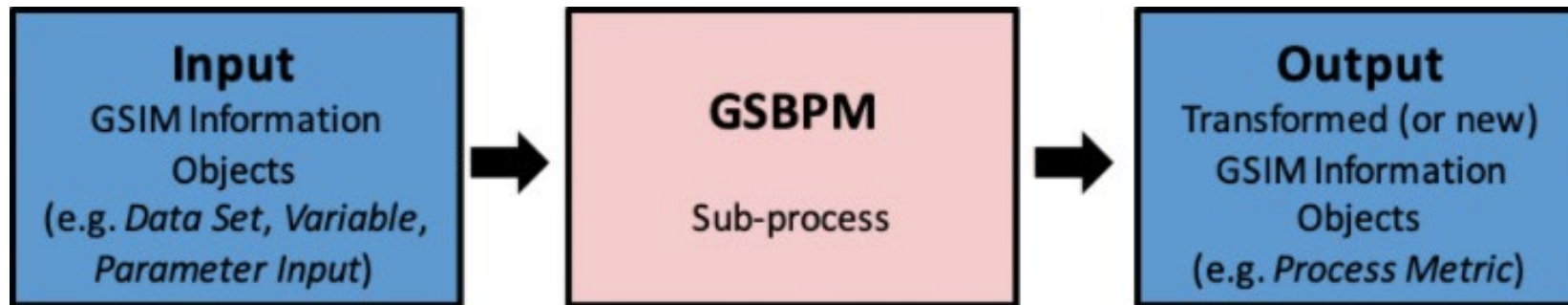
- Provides a common language to improve communication between statistical organizations at national and international levels
- GSIM in combination with GSBPM creates an environment prepared for reuse and sharing of methods, components and processes
- Enables statistical organizations to rethink how their business could be more efficiently organized. by defining objects common to all statistical production, regardless of subject matter
- Provides a common language to improve communication between the different roles in statistical production (business and information technology experts)

October 2016



What is the relationship between GSIM & GSBPM?

- GSIM and GSBPM are complementary models for the production and management of statistical information. Greater value will be obtained from both models if they are applied together.
- GSBPM models the statistical production process and identifies the activities undertaken by producers of official statistics that result in information outputs.
- GSIM helps describe GSBPM sub-processes by defining the information objects that are used by them, that flow between them, and are created in them in order to produce official statistics.



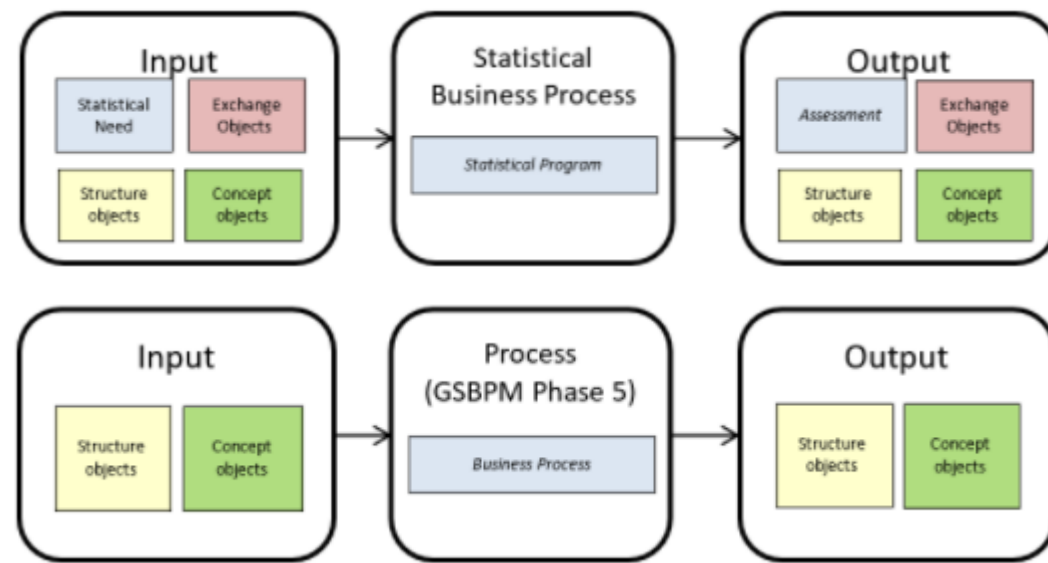


GSIM information objects in context of GSBPM

If the GSBPM is considered as a frame of reference for statistical production processes, the top level can be considered as equivalent to the statistical production process as a whole.



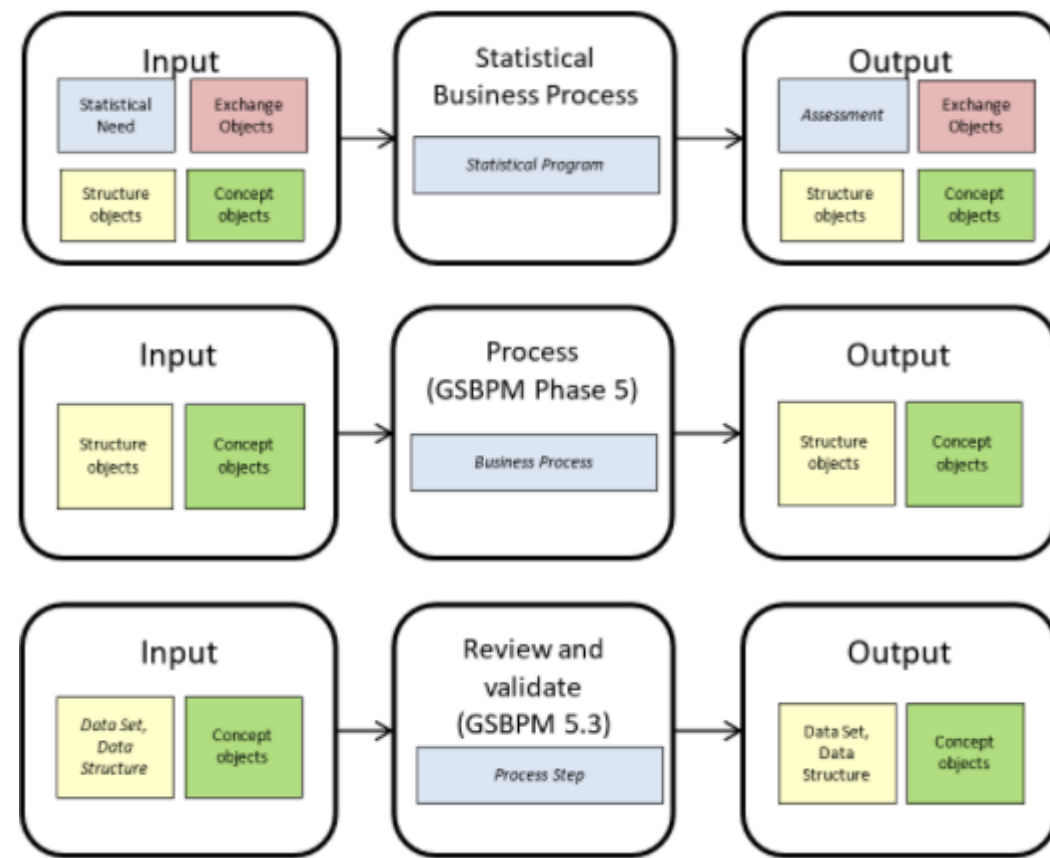
GSIM information objects in context of GSBPM



The next level down corresponds to a phase of the statistical production process (for example the "Process" phase of the GSBPM).



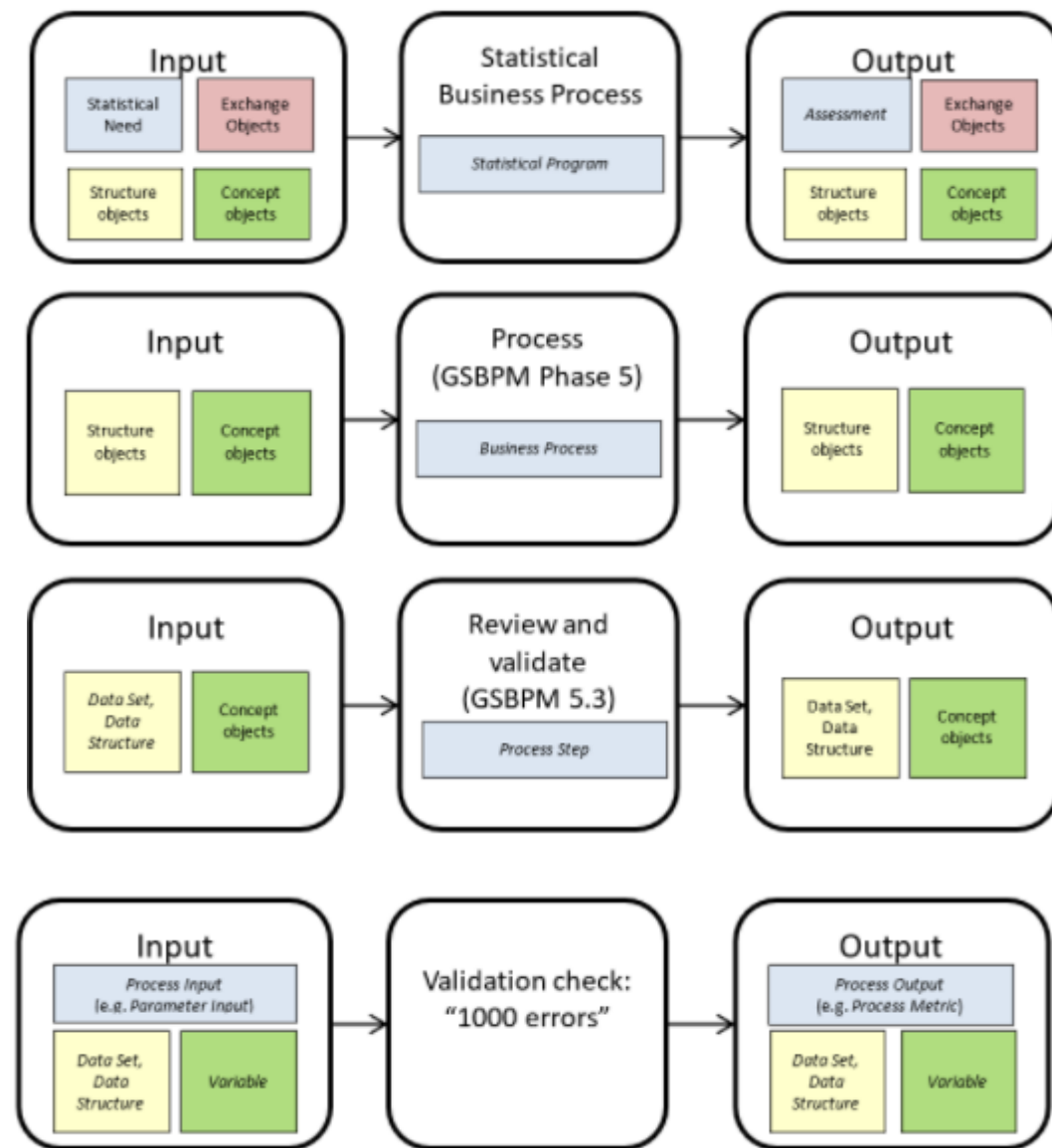
GSIM information objects in context of GSBPM



The third level corresponds to a sub-process (for example sub-process 5.3 of the GSBPM – Review and validate).



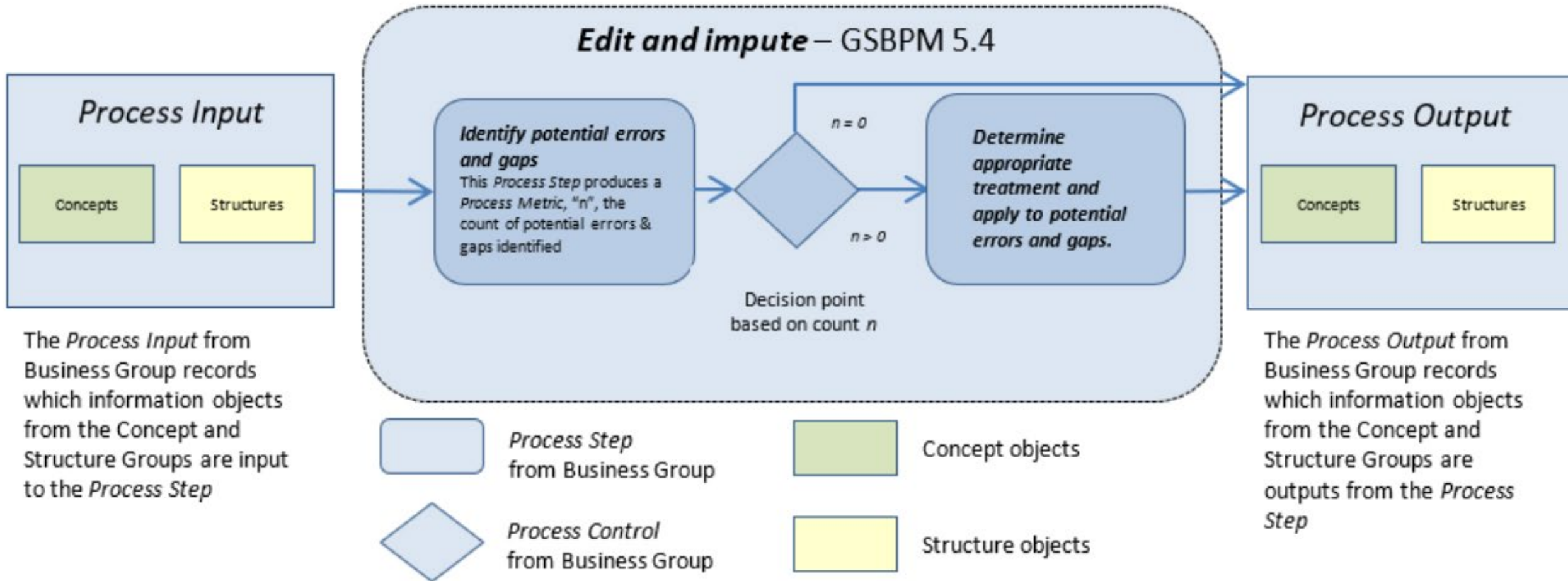
GSIM information objects in context of GSBPM



The fourth level consists of the individual building blocks within the sub-process, such as detecting financial values that might have factor thousand errors.



Designing your own imputation process



Where can I find out more?

UNECE - GSIM Wiki

2) Glossary



GSIM v1.2 documents
New Documents on GSIM v1.2 (UML Diagram, Glossary, Enterprise Architect file, change log etc.)

<https://statswiki.unece.org/display/gsim/Generic+Statistical+Information+Model>

3) Clickable GSIM



Clickable GSIM
New Clickable GSIM v1.2



GSIM E-training
New GSIM E-training (videos, presentation files, etc.)



Communicating GSIM
Communication Paper for a General Statistical Audience, GSIM Brochures and Posters



Implementing GSIM
Implementing GSIM



Previous versions of GSIM
Previous versions of GSIM and Change Log



GSIM and other standards
GSIM objects linked to DDI, SDMX, ISO 11179 and Neuchatel



GSIM Statistical Classification Model
GSIM Statistical Classification Model



Uses of GSIM
Use cases of GSIM: Remote Access Infrastructure for Register Data (RAIRD) Information Model



GSIM Discussion Forum
Questions about GSIM? Post them here!

1) Communication paper





PAGE TREE

- > GSIM and standards
- > GSIM Discussion Forum
- > Uses of GSIM
 - GSIM resources repository
- > Old versions of GSIM
- ▼ GSIM v1.2 documents
 - GSIM v1.2 main changes
 - Enterprise Architecture file
 - **GSIM v1.2 Glossary**
 - GSIM v1.2 Communication Paper
- Etraining

Click on Object

GSIM v1.2 Glossary

Created by InKyung Choi, last modified by InKyung Choi on 28 May 2020

Sort by Object or Group

Word version: [GSIM v1.2 - Glossary.docx](#)

Object	Group	Definition	Explanatory Text
Administrative Details	Base	Extensions to the model based on an organization's administrative needs.	The <i>Administrative Details</i> allow for future extensions to information to be added about maintain the other objects o
Agent	Base	An <i>Agent</i> is someone or something that bears some form of responsibility for a <i>Business Process</i> taking place, for the existence of an entity, or for another agent's <i>Business Process</i> .	An <i>Agent</i> may be either an <i>Organization</i> or an <i>Individual</i> . An <i>Organization</i> may be an <i>Organization</i> , such as depart sub <i>Agents</i> , which may be eit parent <i>Organization</i> or <i>Indiv</i>
Agent In Role	Base	An <i>Agent</i> acting in a specific <i>Role</i> .	In the Organization Ontolog
Change Event	Base	A <i>Change Event</i> captures that a change has	A <i>Change Event</i> can be appli

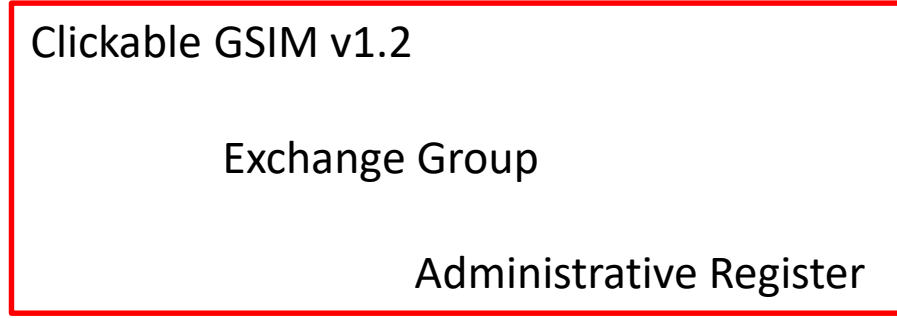
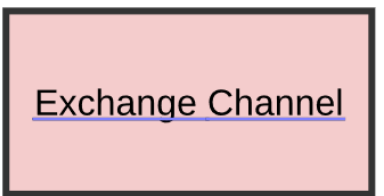


Clickable GSIM v1.2

PAGE TREE

- GSIM on a page
- › Base Group
- › Business Group
- › Concept Group
- ▼ Exchange Group
 - **Administrative Register**
 - Data Harvest
 - Exchange Channel
 - Information Consumer
 - Information Provider
 - Instance Question
 - Instance Question Block
 - Instance Statement
 - Output Specification
 - Presentation
 - Product
 - Protocol
 - Provision Agreement
 - Question
 - Question Block
 - Questionnaire
 - Questionnaire Component

Space tools



Definition

Object	Group	Definition	Explanatory Text	Synonyms
Administrative Register	Exchange	A source of administrative information which is obtained from an external organisation (or sometimes from another department of the same organisation).	The <i>Administrative Register</i> is a source of administrative information obtained usually from external organisations. The <i>Administrative Register</i> would be provided under a <i>Provision Agreement</i> with the <i>Information Provider</i> . This administrative information is usually collected for an organisation's operational purposes, rather than for statistical purposes.	



Any questions?

