



# ABS Registers Transformation Program

## Luisa Ryan and Mark Burkhart

### *Session 2: The Role of the SBR in the Modernisation of the Statistical Production Process*

27 September 2017



[www.abs.gov.au](http://www.abs.gov.au)

reduce  
statistical  
risk



reduce  
time to  
market

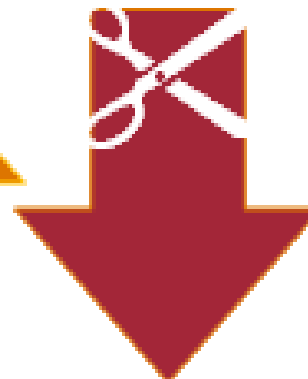


reduce  
cost



enable

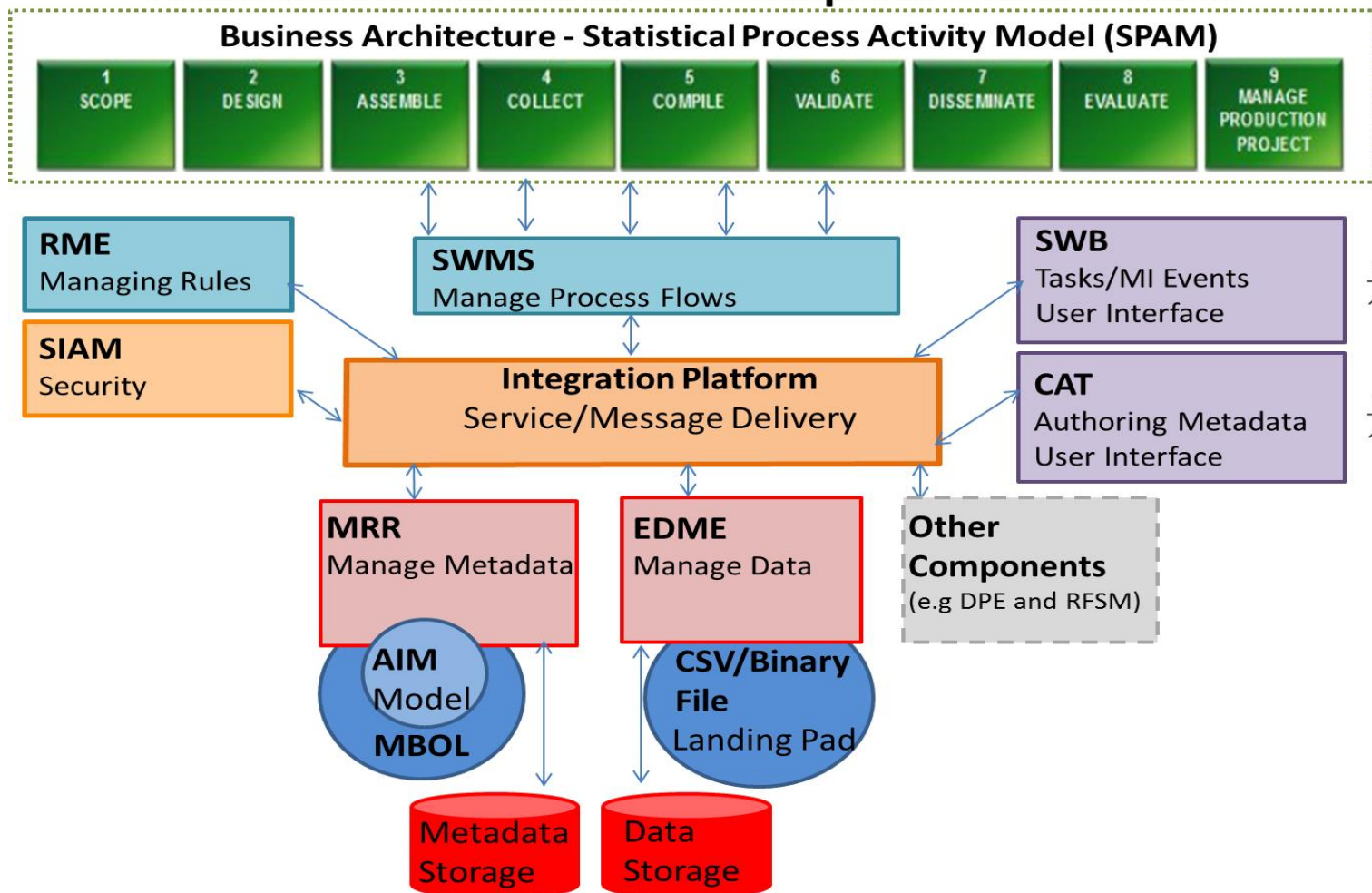
grow the  
business



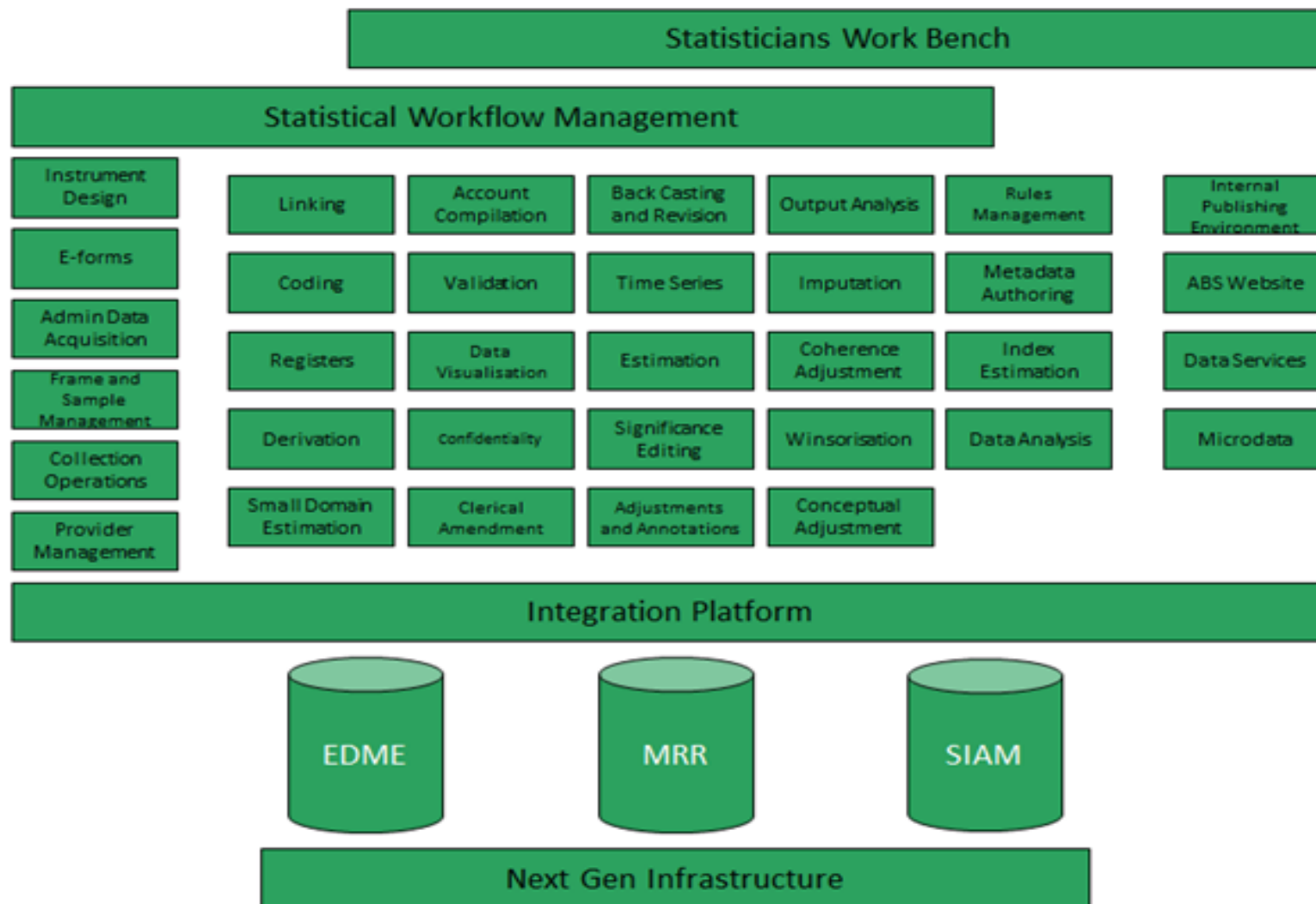
reduce  
red tape

# ABS Foundational Infrastructure Components

## Foundational Infrastructure Component Connections



# ABS Enterprise Wide Services



# ABS Business Register - key facts

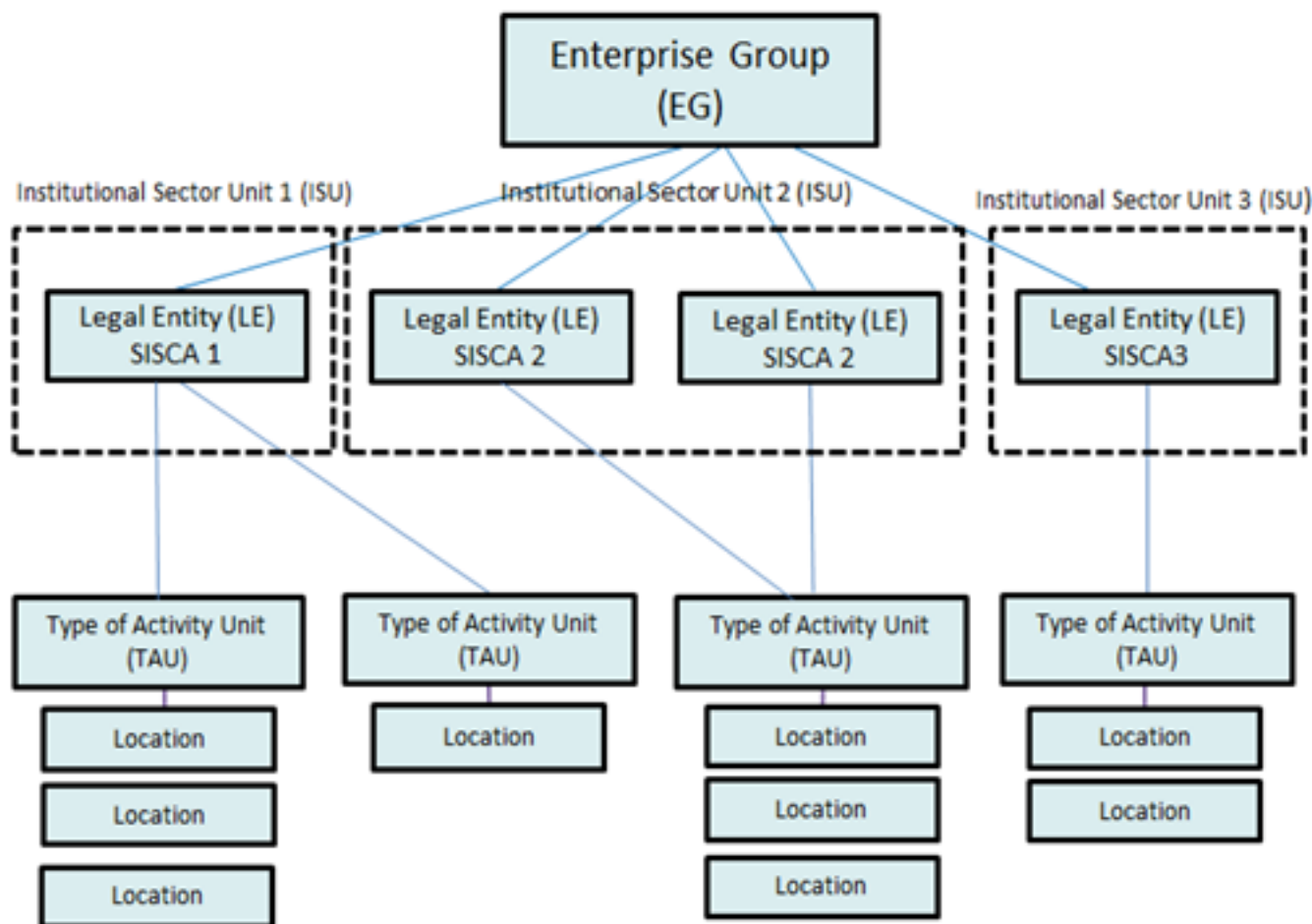
- Current Register – Business Register Integrated Management System (BRIMS)
- Scope
  - All legal entities undertaking productive activity in Australia
- Data sources
  - Administrative data – Australian Taxation Office
  - Profiling - contact with businesses
- Economic Units Model
  - Statistical unit is the Type of Activity Unit (TAU) – same as the KAU
- Size
  - Approximately 8.5 million businesses on the ABSBR
  - Approximately 2.3 million businesses in scope of the Common Frame
- Key uses
  - Produce survey frames and support statistical processing
  - Produce business demography
  - Integrate data

# Transformed ABS Business Register

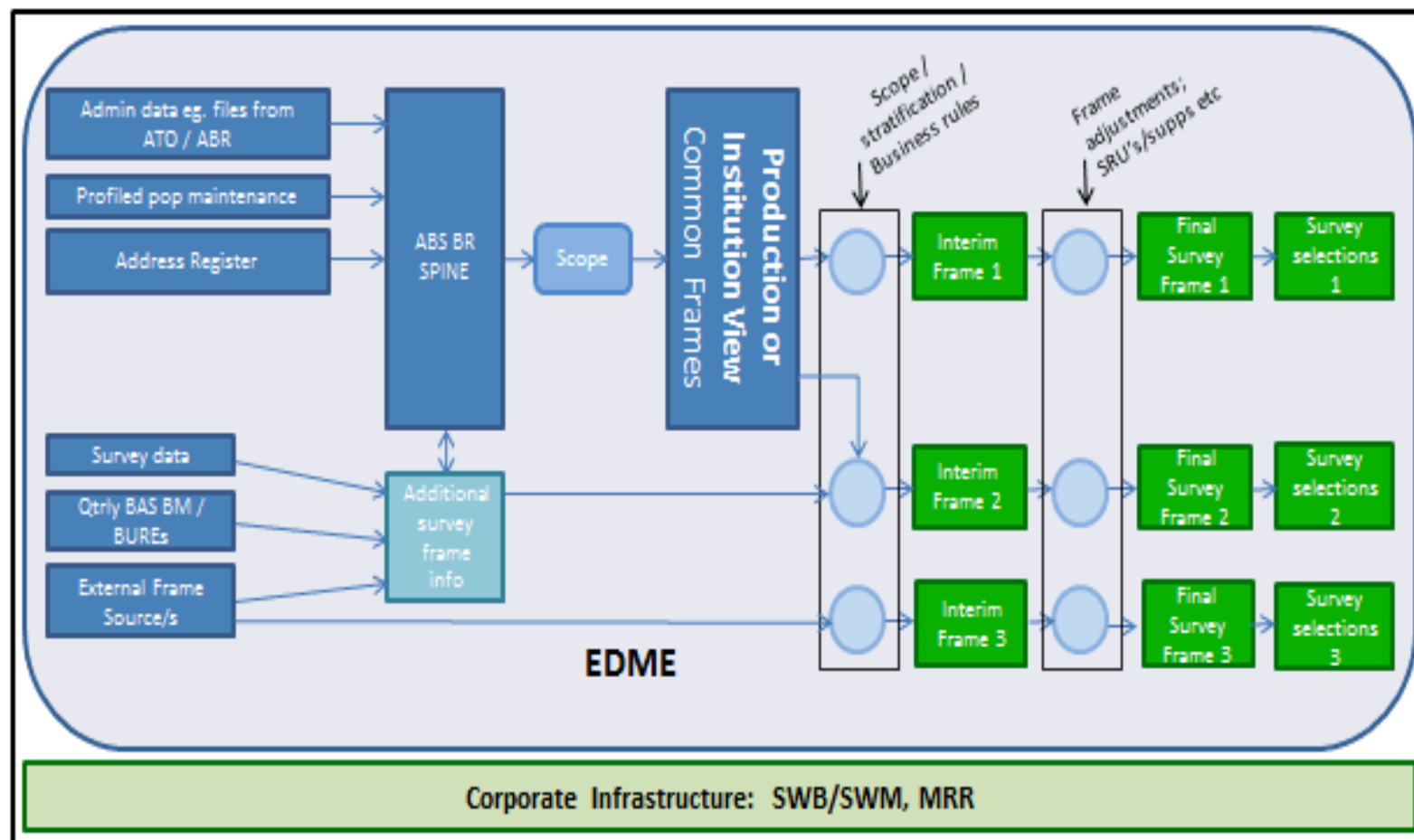


- Registers environment
  - Register created virtually
  - Will be driven by metadata and business rules
  - Spine will enable data linking between units to create outputs
- Frames
  - Two Common Frames
    - Production based Common Frame (TAU)
    - Institutional Sector based Common Frame (ISIU)

# Transformed ABS Business Register: Economic Units Model

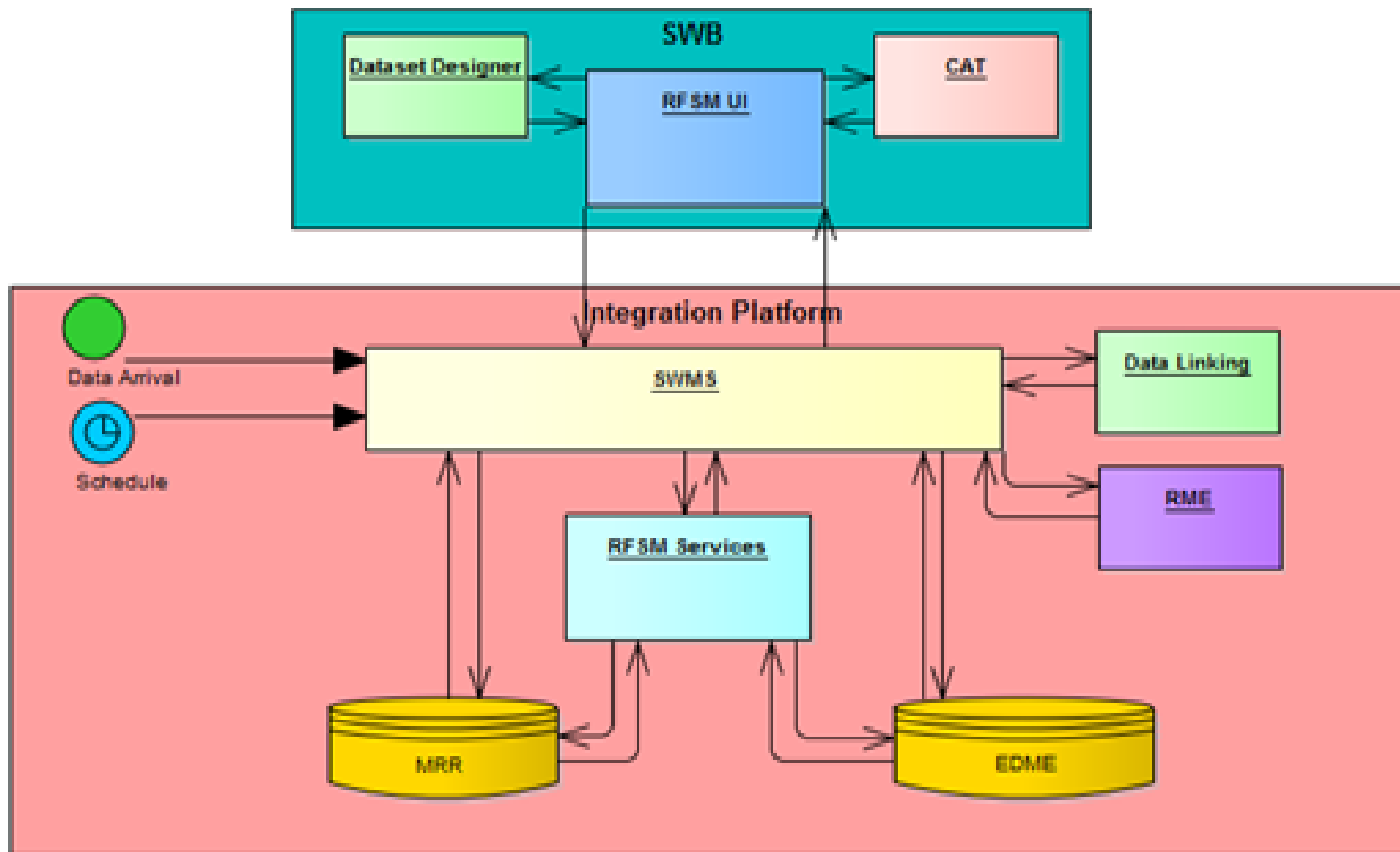


# Transformed ABS Business Register: Survey Frames





# Transformed ABS Business Register: Re-engineered processes



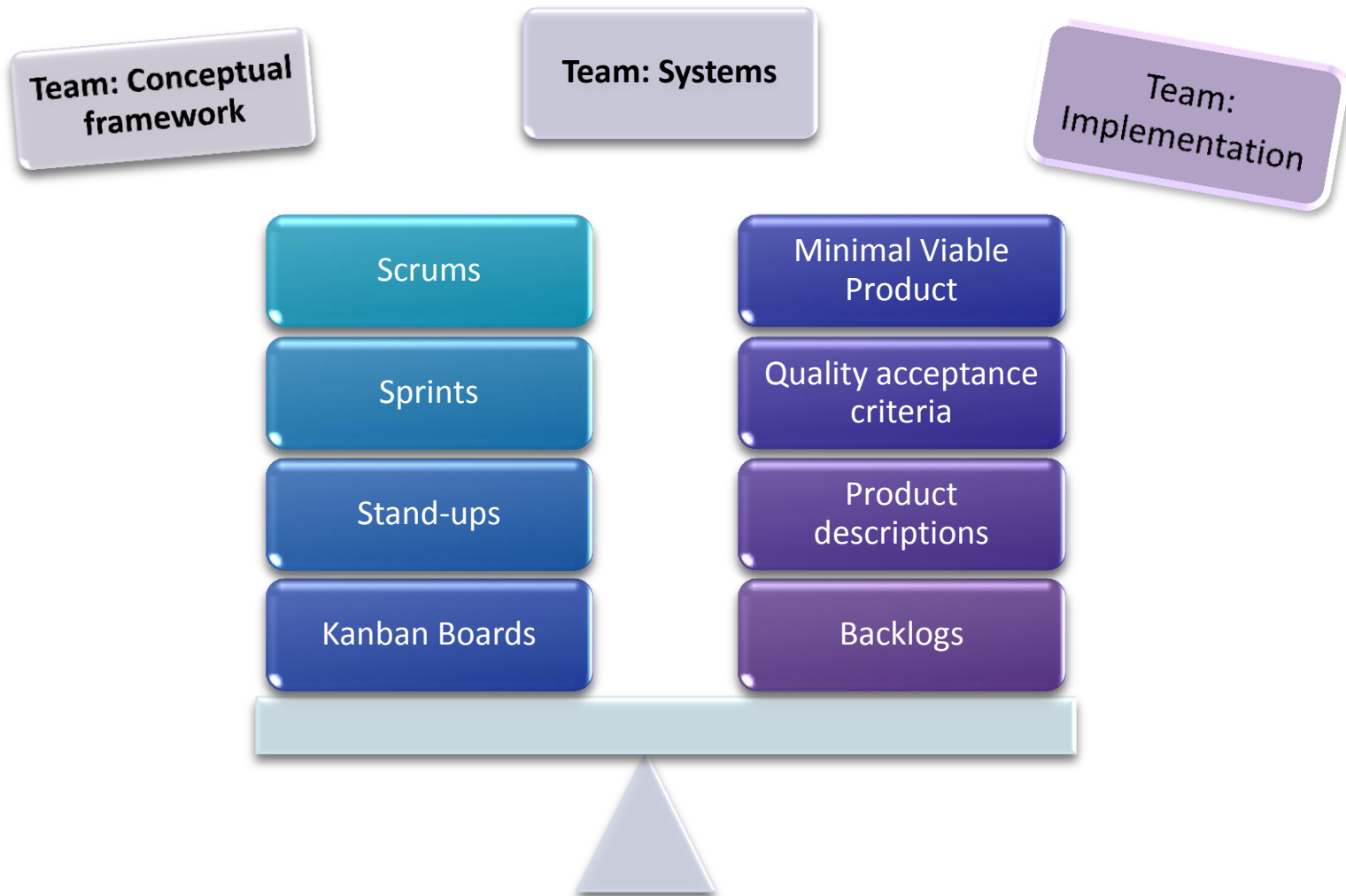
# Transformed ABS Business Register: Re-engineering approach



Implementation components:

- **Business process re-engineering**
- **Data and metadata migration**
- **Testing and business acceptance**
- **Change management**
- **Training**
- **Onboarding**
- **Transition statistical risk management**
- **Decommissioning**

# Transformed ABS Business Register: Agile re-engineering



## Key challenges

- Managing core business and transformation
- Dependencies within the overall program
- Unpacking the legacy system
- Onboarding timetable – ABS Business Register will not be ready in time for first collections that are onboarding