

Meeting of the Group of Experts on Business Registers

Session III

Geospatially Enabling the ABS Business Register

Maria Ioannou, Jenny Foster and Luisa Ryan

ABS Geospatial Strategy

- Statistical Spatial Framework
 - Provide for a consistent and common approach to geospatially enabling statistical and administrative data

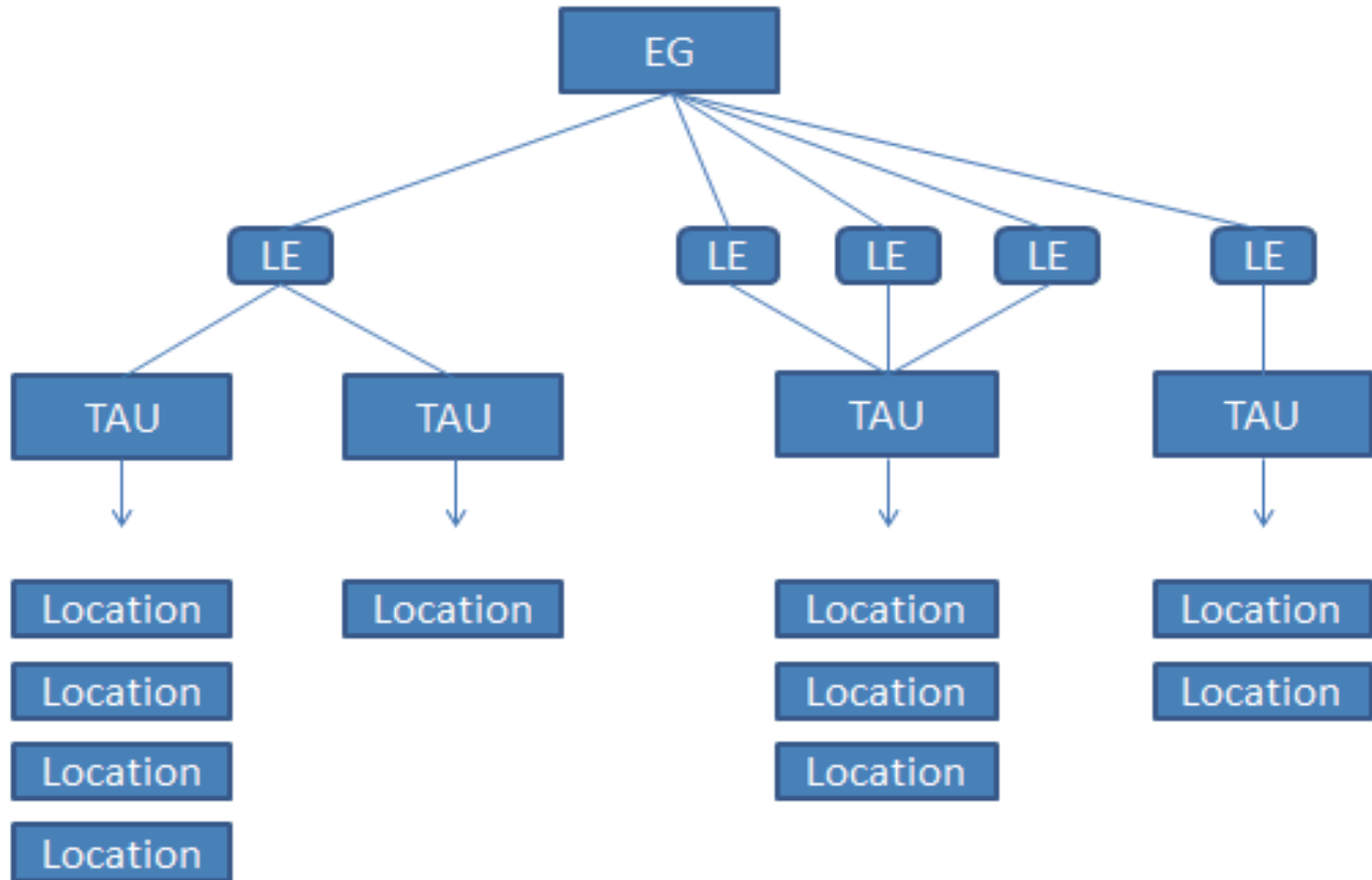
Benefits

- Improve availability of regional business counts
- Improve further analysis via data linking, modelling
- Support migration of location based collections
- Support gross regional product estimates
- Enable coherence with population statistics
- Reduce provider load
- Use in the scoping of survey frames

Current Initiatives

- Location statistical unit has been added to the ABS Economic Units Model
 - a single, unbroken physical area, occupied by an organisation, at which or from which, the organisation is engaged in productive activity on a relatively permanent basis, or at which the organisation is undertaking capital expenditure with the intention of commencing productive activity on a relatively permanent basis at some time in the future”

Economic Units Model



Current Initiatives

- Australian Business Register
 - All new business registrations collect information on all locations (including industry)
 - Program to collect location data from the top multi-location businesses

Current Initiatives

- Systems functionality to hold location data at the Enterprise Group and ABN levels added
 - Still need to add location
- Main business address data geocoded using the ABS address coder
- Australian Business Register (ABR) Data loaded to the ABS input data warehouse

Challenges

- Availability of location data
- Maintenance
- Data quality
- Conceptual challenges
 - Locations not corresponding to an address
 - Services where it does not make sense to describe geographically

Future Work Program

- Geospatial maintenance strategy
 - Identify additional sources
- Continue to work with ABR on locations coverage
- Developing conceptual link with the ABS Address Register
- Develop standard treatments for special cases
- Data visualisation tool