



**Statistical Office  
of the Slovak Republic**

**SELECTED ELEMENTS  
OF THE INTEGRATED CENSUS IN SLOVAKIA  
WITH AN IMPACT ON THE USE  
OF ADMINISTRATIVE DATA SOURCES**

ECONOMIC COMMISSION FOR EUROPE  
CONFERENCE OF EUROPEAN STATISTICIANS  
GROUP OF EXPERTS ON POPULATION AND HOUSING CENSUSES

Ľudmila Ivančíková  
Zuzana Podmanická

Twenty-first Meeting, Geneva, 18–20 September 2019



## Introduction



## The legislative framework for ADSs



## Census 2021 & ADSs



## INTRODUCTION

2011

In 2011, the **traditional census** in the Slovak Republic was conducted in an exhaustive way

2021

In 2021, the **combined census** will be conducted with the use of administrative data sources and full field enumeration





Census  
Act

## Act on the 2021 Population and Housing Census

Act No. 223/2019 Coll.

Approved: 22. 07. 2019 / Entered into force: 01. 09. 2019

Inhabitants

## Population

This census relieves the population from the obligation to fill in complex paper forms in self-enumeration. The Statistical Office of the SR will collect directly from the population only data that are not contained in ADSs.

9

ADSs

## Entities

(The Ministry of Interior of the SR, The Ministry of Education of the SR, The Ministry of Environment of the SR, The Geodesy, Cartography and Cadastre Authority of the SR, The Social Insurance Agency, The Financial Directorate of the SR, The Corps of Prison and Judicial Guard, The Office of Labour, Social Affairs and Family, The Health Care Surveillance Authority)

ADS  
Administrators

### The manager (owner) of the ADS shall provide data

- by electronic form
- free of charge
- on the basis of the written request of the SO SR
- on the agreed date
- in the aggregated format and way



## Idea

### New concept

The use of administrative data sources and data on the population collected in the field (exhaustive survey)

## Reason

### Innovation

Historically the first integrated Census in Slovakia based on the combined census method.

## Based on

### Key elements

- effective use of existing data sources
- the statistical data integration
- reducing the administrative burden on the population
- only electronic data collection

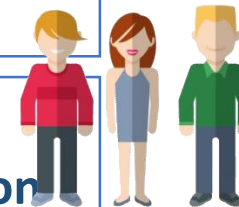
# THE CONCEPT OF AN INTEGRATED CENSUS – VARIABLES

## Census 2021 Variables

### Administrative data sources versus field data collection



**All variables about houses and dwellings will be fully covered from administrative data sources and registers.**



**Some variables about population will be covered from administrative data sources and registers.**

(e.g. permanent residence, age, sex, citizenship, country of birth, activity status,...)

**Some variables will be covered from full field enumeration.**

(e.g. marital status, occupation, nationality, religion, households,...)





## Analyses

**The analyses of individual ADSs are based on a uniform approach.**

### **The analyses cover**

- technical characteristics of the provided data sets,
- the usability of the data content,
- the extent of completeness of selected items,
- the analysis of code lists and the possibility to convert them into binding statistical code lists,
- analyses of connections and logical links between variables,
- identification of errors,
- the possibilities for an optimal correction of emptiness or logical errors

**The analyses are performed periodically (on annual basis) since 2017.**

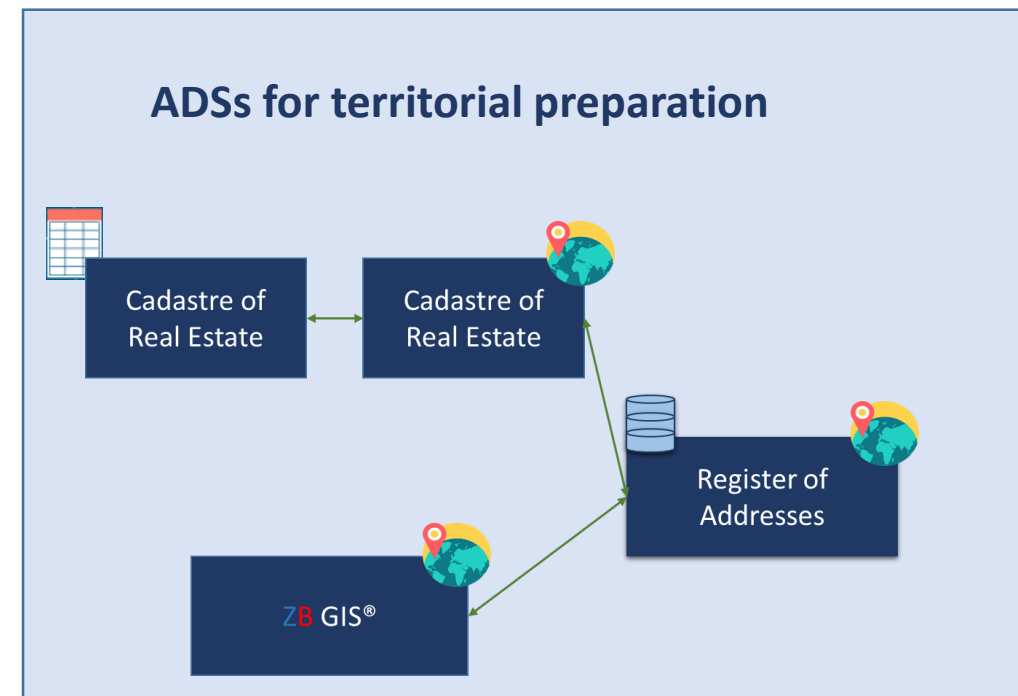
# ADSs & THE TERRITORIAL PREPARATION



Teritorial preparation = Preparation of the database of all buildings in the Slovak Republic, where someone can be enumerated

## Variables for spatial localisation of addresses:

- Country name
- District name
- Municipality name
- Part of the municipality
- Basic settlement units
- Street name
- Property registration number
- Building number
- X,Y coordinates







## Data processing

**Within the processing of collected data, the database will be filled with calculated variables (e. g. the number of persons in dwelling) with derived variables (e. g. ownership of house by ownership of dwelling)**

**For the purposes of the population census, data will be processed by integrating ADSs between themselves and, subsequently, by integrating ´integrated ADSs´ with field data.**

**For the purposes of the housing census data will be processed by integrating administrative data sources and municipal records.**

The statistically processed set of data on houses and dwellings, including calculated and derived variables, will be provided to each municipality for its cadastral territory after the end of the entire census of the population, houses and dwellings. That means, the municipal data sets will be provided to each municipality; they will be provided in different formats to meet the specificities of data imports to the information systems of individual municipalities. At the same time, this database will allow municipalities to continuously update the data and, thus, it can ensure the sustainability of the solution and its use for the local needs of municipalities, as well as national requirements for the 2021 Postcensus.



# THE INTEGRATION OF ADSs ON THE POPULATION



## Population Data Integration

The integration of ADS data and data from the population is based on the grouping of variables into 4 groups:

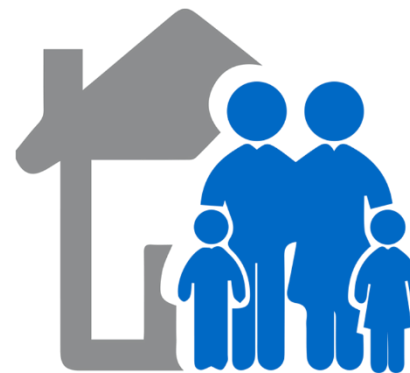
- 1 – variables that enter the e-collection, the e-collection is filled with them, and there are, or there can be, checks running in the background.
- 2 – variables that are filled from ADSs but they will not be used for the e-collection
- 3 – variables that are filled exclusively from ADSs
- 4 – variables that are collected exclusively in the field

The integration of ADSs with data from the e-collection will take place in 2 phases.

1 – only first-type variables will be used – they will fulfil the authentication function in the e-collection.

2 – after the end of the e-collection, the data from the e-collection will be linked to the processed data from ADSs.

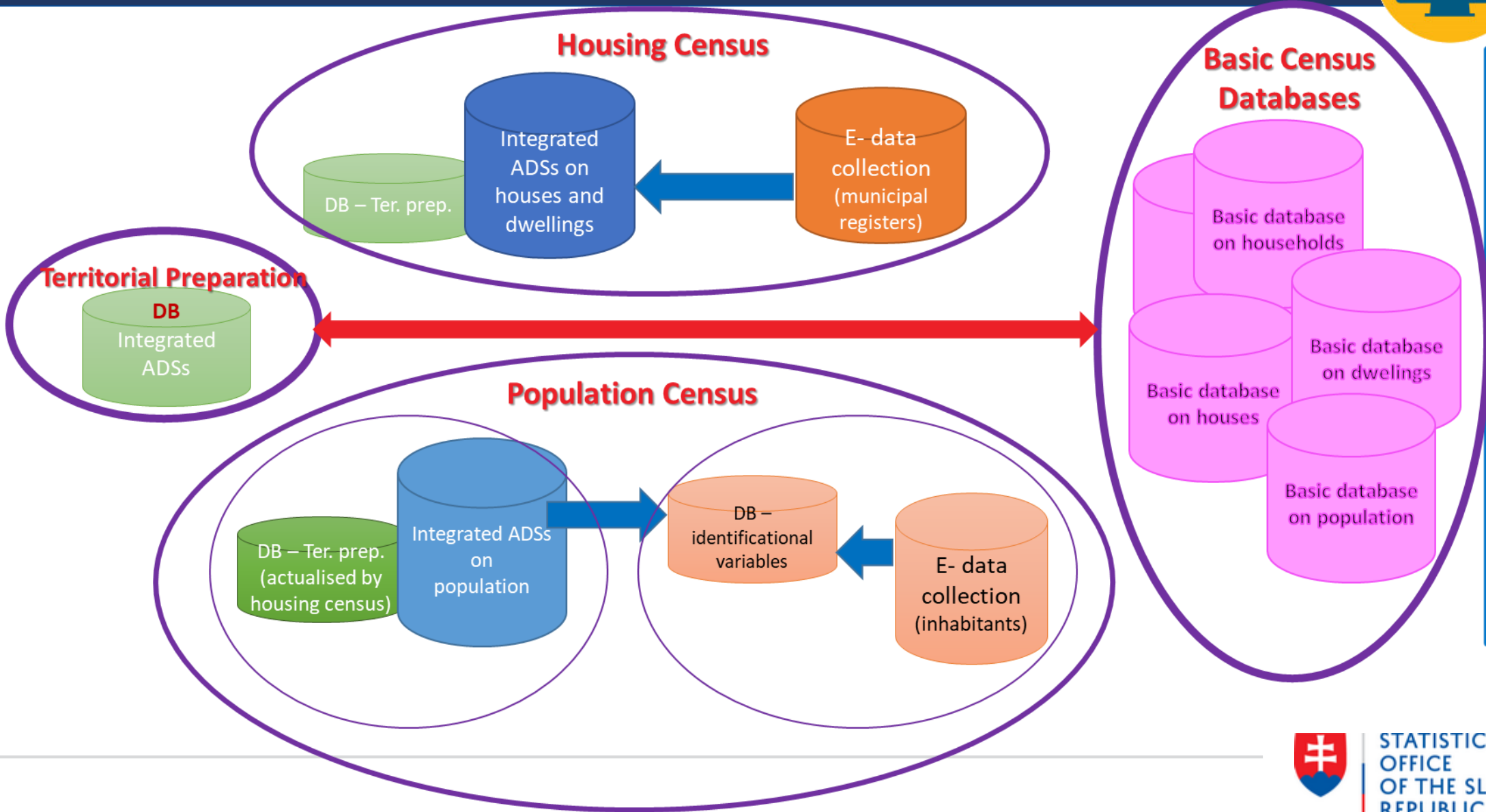
Integrations to provide additional data (e. g. data on households or data on the population in houses and dwellings) will be statistically processed after the end of the e-collection of data on the population.



# PROCEDURAL POINT OF VIEW



**Preparation:** Census Act, Studies, analyses, focus groups,...



**Dissemination:** interactive public databases, hypercubes, Census Hub, analyses, publications, samples,...



**Thank you for your  
attention.**