



# UNECE Statistical Database

[unece.org/data](http://unece.org/data)

Patrick Hernusi  
UNECE Statistical Division

**Joint Task Force on Environmental Statistics and Indicators**  
Geneva, 25 October 2018



STATISTICS





STATISTICS



# Session Outline

- Overview of the database
- How data is collected, organized and disseminated
- Key features
- Samples of database products and apps



# Overview

**UNECE Statistical Database** is established in 2003 to provide free and easy access to high quality and comparable data among countries.

- 56 countries of North America, Europe and Central Asia
- All UNECE member countries except Andorra, Liechtenstein, Monaco, San Marino have data disseminated in each of the 6 domains
- Data on 1980, 1990, 1995, from 2000 onwards annually
- Interface in English and Russian

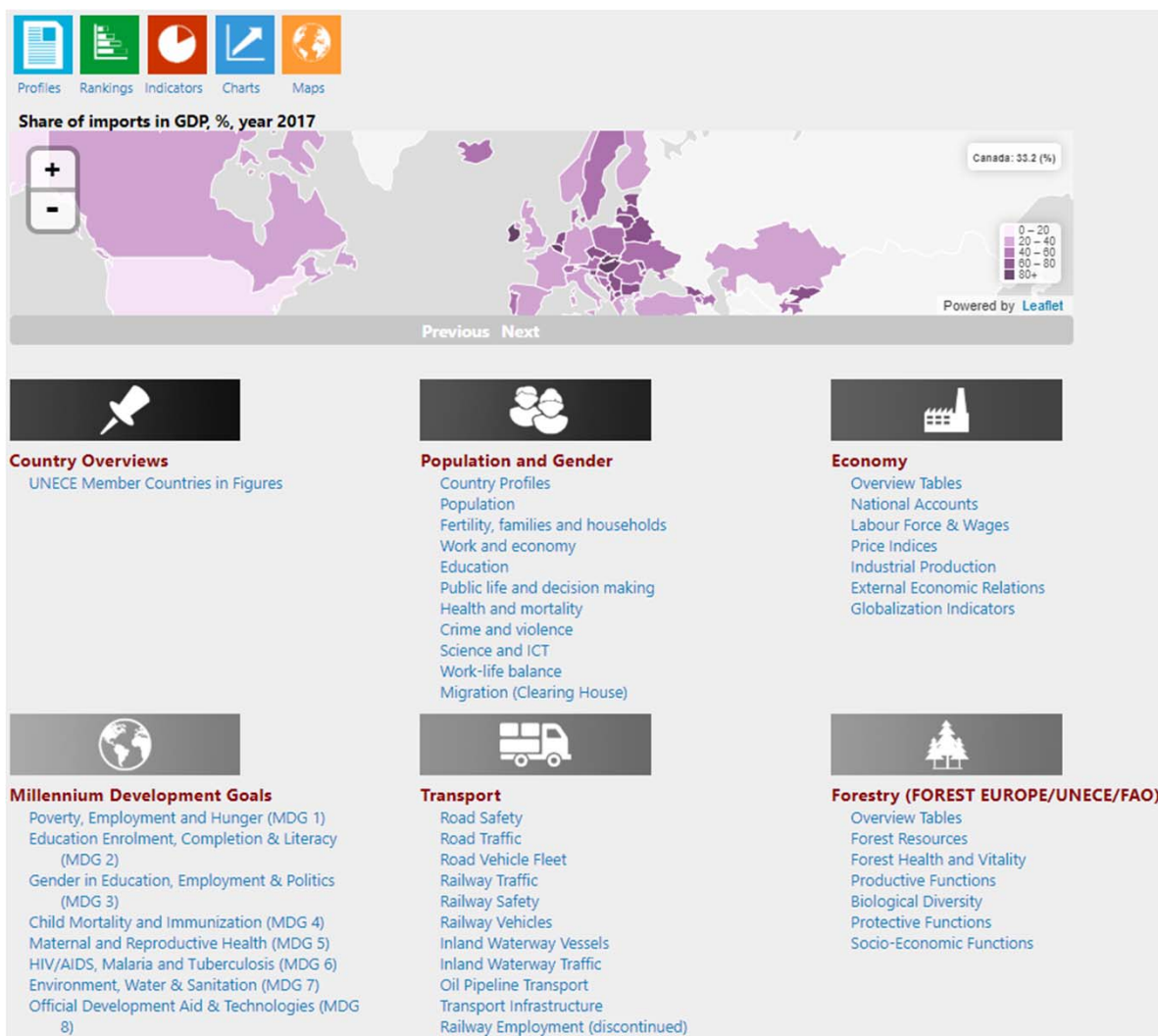


Social

STATISTICS



# Database Landing Page





# Data Work Teams

## **Statistical division**

- Population and gender
- Macroeconomic
- MDG
- Country Overview

## **Sustainable Transport Division**

- Transport and road safety

## **Forests, Land and Housing Division**

- Forestry and Timber stocks  
(Joint FAO and UNECE data)



# Data Points

7.9 million data points

700+ disseminated datasets

Gender database	–	3.4 million
Macroeconomic database	–	2.7 million
Migration Clearing house	–	807 thousands
Transport database	–	770 thousands
MDG	–	95 thousands
Timber	–	40 thousands



# Data Sources

## International

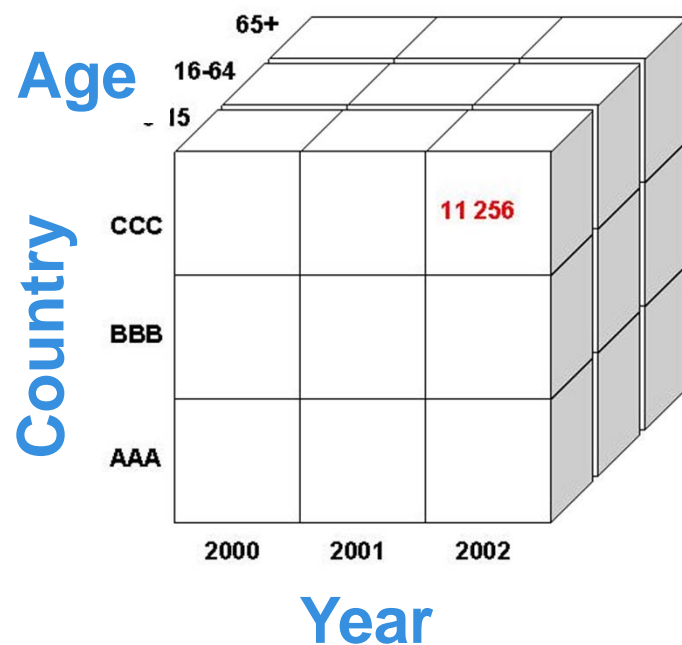
- Eurostat
- UNICEF, ILO, WHO, UNESCO
- IPU
- CIS, IMF, OECD, World Bank, CARE database

## National

- Questionnaire to national statistical institutes (Excel template)
- Publications
- Websites
- Sporadic correspondence



# Dissemination Tables



- Multi-dimensional tables present data by country, by various classifications related to the context, and by time period.
- Emphasis on making the data ready for international comparison and immediate analytical use, as well as on making them easy to find.





Social

STATISTICS



# Dissemination Tables

UNECE Statistical Database >> Population and Gender >> Work and economy >> Employment by sector of activity and sex

1 Choose table      2 Choose variable      3 Show table

Show table    About table

Edit and Calculate    Save table as    Table - Layout 2

XLSX   CSV   PX    Table settings    Save your retrieval

Employment by Country, Sector of Activity, Sex, Measurement and Year

			Employed (in thousands)																						
			1980	1990	1995	2000	2001	2002	2003	2004	2005	2006	2007	2008	2009	2010	2011	2012	2013	2014	2015	2016	2017		
Kazakhstan	All sectors	Both sexes	..	..	..	..	6 698.8	6 708.9	6 985.2	7 181.8	7 261.0	7 403.5	7 631.1	7 857.2	7 903.4	8 114.2	8 301.6	8 507.2	8 570.6	8 510.1	8 623.8	..	..		
		Female	..	..	..	..	3 228.6	3 222.5	3 366.9	3 463.3	3 496.5	3 594.5	3 708.3	3 839.5	3 863.5	3 952.5	4 051.3	4 131.2	4 181.3	4 120.7	4 177.8	..	..		
		Male	..	..	..	..	3 470.2	3 486.4	3 618.3	3 718.5	3 764.4	3 808.9	3 922.8	4 017.7	4 039.9	4 161.6	4 250.4	4 376.0	4 389.4	4 389.3	4 446.0	..	..		
	Agriculture	Both sexes	..	..	..	..	2 366.3	2 366.7	2 446.8	2 387.9	2 335.7	2 318.3	2 366.0	2 349.8	2 311.0	2 294.9	2 196.1	2 172.7	2 073.6	1 605.1	1 553.4	..	..		
		Female	..	..	..	..	1 101.4	1 115.9	1 144.0	1 104.8	1 092.1	1 080.1	1 099.4	1 116.2	1 109.6	1 083.8	1 064.5	1 033.3	972.0	736.3	714.4	..	..		
		Male	..	..	..	..	1 264.8	1 250.9	1 302.9	1 283.1	1 243.6	1 238.3	1 266.6	1 233.5	1 201.5	1 211.1	1 131.5	1 139.4	1 101.5	868.8	839.0	..	..		
	Industry	Both sexes	..	..	..	..	830.4	824.0	855.2	869.6	891.8	904.5	926.0	938.0	939.3	948.8	960.3	1 004.4	1 039.1	1 090.7	1 083.7	..	..		
		Female	..	..	..	..	264.0	262.8	275.6	282.6	294.6	302.7	311.4	313.8	310.9	318.8	318.3	324.5	331.6	347.3	341.2	..	..		
		Male	..	..	..	..	566.4	561.2	579.6	587.0	597.2	601.8	614.6	624.3	628.5	630.0	642.0	679.9	707.5	743.4	742.6	..	..		
	Services	Both sexes	..	..	..	..	3 502.2	3 518.2	3 683.1	3 924.3	4 033.4	4 180.7	4 339.1	4 569.4	4 653.0	4 870.5	5 145.3	5 330.1	5 458.0	5 814.3	5 986.6	..	..		
		Female	..	..	..	..	1 863.2	1 843.9	1 947.3	2 075.8	2 109.8	2 211.7	2 297.5	2 409.5	2 443.0	2 549.9	2 668.4	2 773.4	2 877.6	3 037.2	3 122.2	..	..		
		Male	..	..	..	..	1 639.0	1 674.3	1 735.8	1 848.5	1 923.6	1 968.9	2 041.6	2 159.9	2 210.0	2 320.6	2 476.9	2 556.7	2 580.3	2 777.1	2 864.4	..	..		



Social

STATISTICS



# Dissemination Tables

>> UNECE Statistical Database >> Population and Gender >> Work and economy >> Employment by sector of activity and sex

1 Choose table      2 Choose variable      3 Show table

Show table    About table

Edit and Calculate    Save table as    Table - Layout 2    ★    i

Edit and Calculate    xls    csv    px    [Table Icon]    [Bar Chart Icon]    [Line Chart Icon]

Change decimals

Pivot clockwise

Multiply variable values

Subtract variable values

Pivot counterclockwise

Change value order

Per cent

Delete variable

Delete value

Divide variable values

Change texts

Pivot manual

Change text/code presentation

Employed (in thousands)

	1990	1995	2000	2001	2002	2003	2004	2005	2006	2007	2008	2009	2010
..	..	..	..	6 698.8	6 708.9	6 985.2	7 181.8	7 261.0	7 403.5	7 631.1	7 857.2	7 903.4	8 114.2
..	..	..	..	3 228.6	3 222.5	3 366.9	3 463.3	3 496.5	3 594.5	3 708.3	3 839.5	3 863.5	3 952.5
..	..	..	..	3 470.2	3 486.4	3 618.3	3 718.5	3 764.4	3 808.9	3 922.8	4 017.7	4 039.9	4 161.6
..	..	..	..	2 366.3	2 366.7	2 446.8	2 387.9	2 335.7	2 318.3	2 366.0	2 349.8	2 311.0	2 294.9
..	..	..	..	1 101.4	1 115.9	1 144.0	1 104.8	1 092.1	1 080.1	1 099.4	1 116.2	1 109.6	1 083.8
..	..	..	..	1 264.8	1 250.9	1 302.9	1 283.1	1 243.6	1 238.3	1 266.6	1 233.5	1 201.5	1 211.1
..	..	..	..	830.4	824.0	855.2	869.6	891.8	904.5	926.0	938.0	939.3	948.8
..	..	..	..	264.0	262.8	275.6	282.6	294.6	302.7	311.4	313.8	310.9	318.8
Male	..	..	..	566.4	561.2	579.6	587.0	597.2	601.8	614.6	624.3	628.5	630.0



STATISTICS



# Dissemination Tables

>> UNECE Statistical Database >> Population and Gender >> Work and economy >> Employment by sector of activity and sex

1 Choose table      2 Choose variable      3 Show table

**Show table**    About table

Edit and Calculate    Save table as    Table - Layout 2

Save table as

- Excel (xlsx)
- Space delimited with heading
- Excel (xlsx) with code and text column
- Excel workbook (xml) with code and text
- Semicolon delimited without heading
- Comma delimited without heading
- JSON-stat file (json)
- Relational file (scb)
- Html file (htm)
- Tab delimited without heading
- Semicolon delimited with heading
- Tab delimited with heading
- PX-file
- Comma delimited with heading
- Space delimited without heading
- Excel workbook (xml)

**Employment by Country, Sex and Year**

				1980	2003	2004	2005	2006	2007	2008	2009	2010
Kazakhstan	All sectors	Both sexes	..	..	6 985.2	7 181.8	7 261.0	7 403.5	7 631.1	7 857.2	7 903.4	8 114.2
		Female	..	..	3 366.9	3 463.3	3 496.5	3 594.5	3 708.3	3 839.5	3 863.5	3 952.5
		Male	..	..	3 618.3	3 718.5	3 764.4	3 808.9	3 922.8	4 017.7	4 039.9	4 161.6
	Agriculture	Both sexes	..	..	2 446.8	2 387.9	2 335.7	2 318.3	2 366.0	2 349.8	2 311.0	2 294.9
		Female	..	..	1 144.0	1 104.8	1 092.1	1 080.1	1 099.4	1 116.2	1 109.6	1 083.8
		Male	..	..	1 302.9	1 283.1	1 243.6	1 238.3	1 266.6	1 233.5	1 201.5	1 211.1
	Industry	Both sexes	..	..	855.2	869.6	891.8	904.5	926.0	938.0	939.3	948.8
		Female	..	..	275.6	282.6	294.6	302.7	311.4	313.8	310.9	318.8
		Male	..	..	579.6	587.0	597.2	601.8	614.6	624.3	628.5	630.0
	Services	Both sexes	..	..	3 683.1	3 924.3	4 033.4	4 180.7	4 339.1	4 569.4	4 653.0	4 870.5
		Female	..	..	1 947.3	2 075.8	2 109.8	2 211.7	2 297.5	2 409.5	2 443.0	2 549.9
		Male	..	..	1 735.8	1 848.5	1 923.6	1 968.9	2 041.6	2 159.9	2 210.0	2 320.6



STATISTICS

# Dissemination Tables

UNECE Statistical Database >> Population and Gender >> Work and economy >> Employment by sector of activity and sex

1 Choose table      2 Choose variable      3 Show table

Show table    About table

Edit and Calculate    Save table as    Table - Layout 2

Table settings    Save your retrieval

Employment by Country, Sector of Activity, Sex, Measure

			Employed (in thousands)						
			1980	1990	1995	2000	2001	2002	
Kazakhstan	All sectors	Both sexes	..	..	..	..	6 698.8	6 708.9	6
		Female	..	..	..	..	3 228.6	3 222.5	3
		Male	..	..	..	..	3 470.2	3 486.4	3
	Agriculture	Both sexes	..	..	..	..	2 366.3	2 366.7	2
		Female	..	..	..	..	1 101.4	1 115.9	1
		Male	..	..	..	..	1 264.8	1 250.9	1
	Industry	Both sexes	..	..	..	..	830.4	824.0	
		Female	..	..	..	..	264.0	262.8	
		Male	..	..	..	..	566.4	561.2	
	Services	Both sexes	..	..	..	..	3 502.2	3 518.2	3
		Female	..	..	..	..	1 863.2	1 843.9	1
		Male	..	..	..	..	1 639.0	1 674.3	1

Table - Layout 2

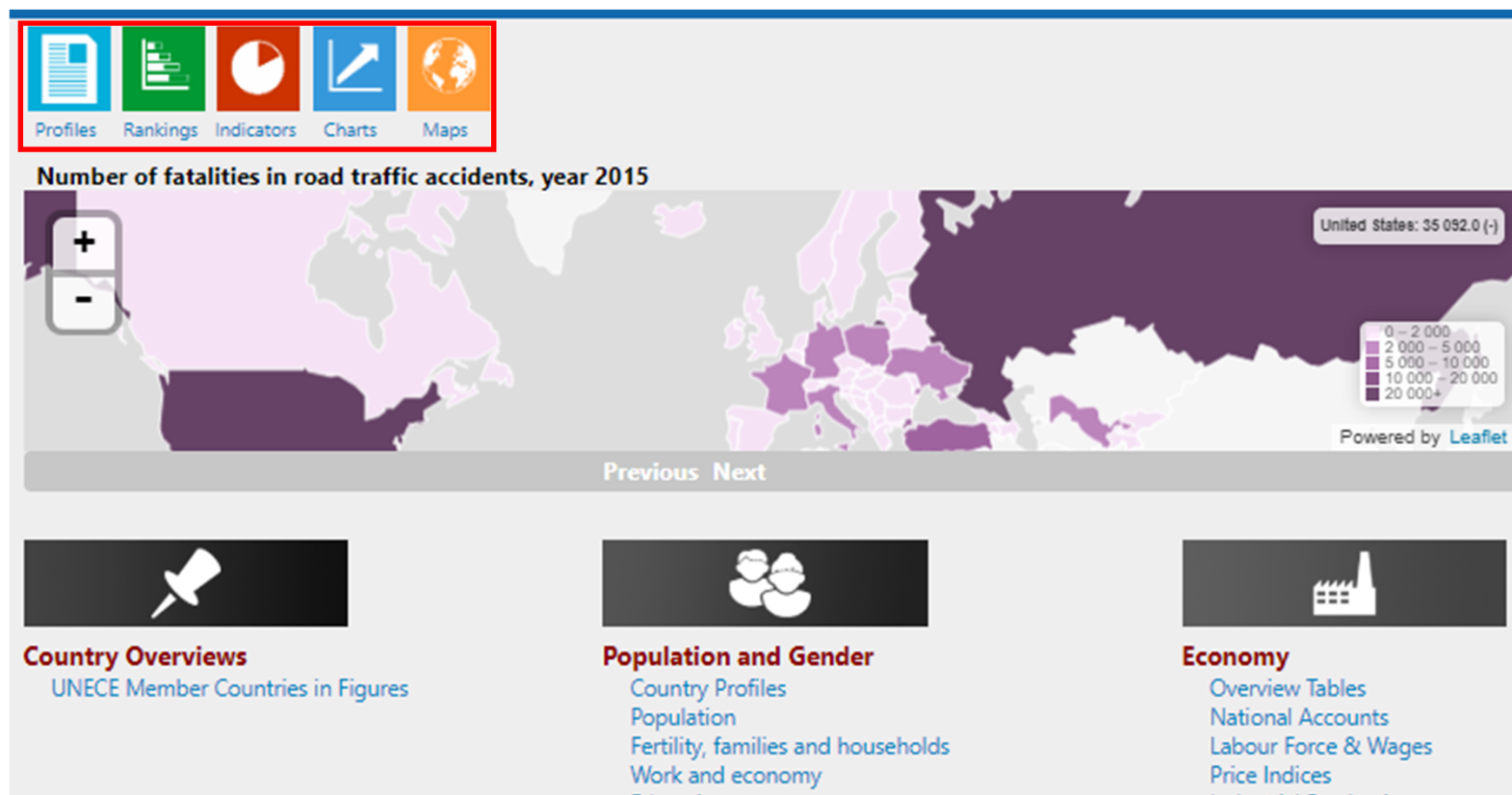
- Footnotes
- Chart - Radar
- Chart - Area stacked
- Table - Layout 2
- Table - Layout 1
- Information
- Chart - Area stacked 100%
- Chart - Horizontal bar stacked 100%
- Chart - Bar stacked 100%
- Chart - Bar stacked
- Chart - Population pyramid
- Chart - Bar
- Chart - Area
- Chart - Line
- Chart - Bar and line
- Chart - Point
- Chart - Horizontal bar stacked
- Chart - Horizontal bar
- Table - Sorted
- Chart - Pie



STATISTICS



# Quick Statistical Charts





STATISTICS



# Quick Statistical Charts

**Click on an indicator to view the chart**

## **Economy**

- Consumer price index, growth rate (%)
- Final consumption expenditure per capita in USD adjusted by purchasing power parities
- GDP in millions of USD adjusted by purchasing power parities
- GDP per capita in USD adjusted by purchasing power parities
- Share of agriculture in GDP, %
- Share of construction in GDP, %
- Share of exports in GDP, %
- Share of finance and business services in GDP, %
- Share of imports in GDP, %
- Share of industry in GDP, %
- Share of trade, hospitality, transport and communication in GDP, %
- Unemployment rate, %
- Youth unemployment rate, %

## **Family**

- Mean age of men at first marriage
- Mean age of women at first marriage
- Proportion of one person households in all households, %





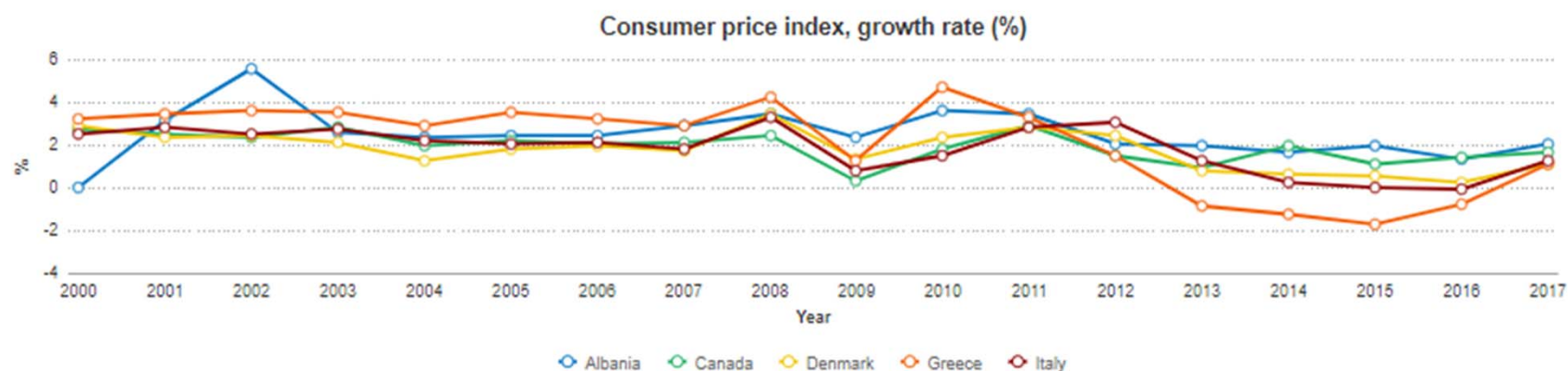
STATISTICS



# Quick Statistical Charts

Add more countries below the chart

[See more data](#)



[Previous](#) [Next](#)

## Footnote:

For economic indicator footnotes click [here](#).

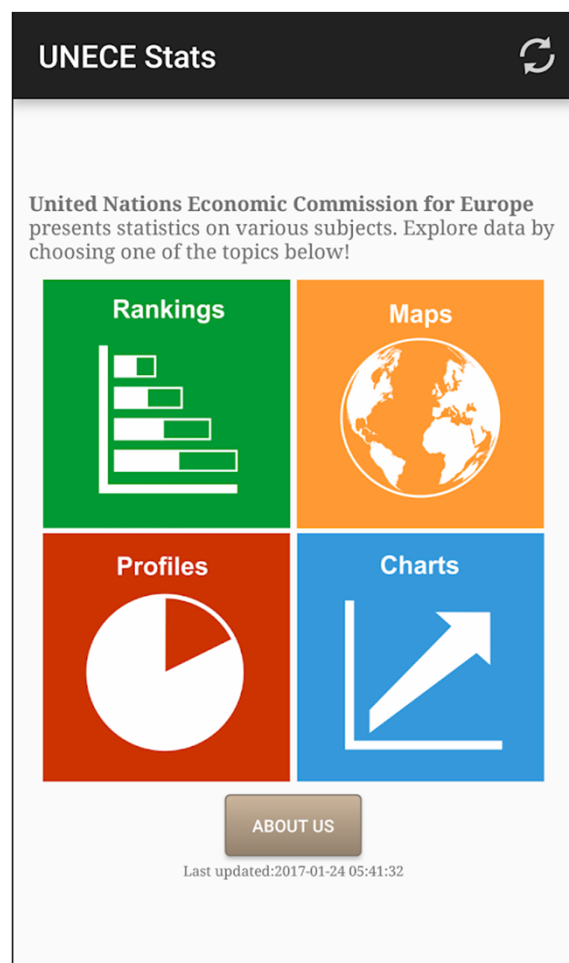
	Albania	<input checked="" type="checkbox"/>	<a href="#">See Table</a>
	Armenia	<input type="checkbox"/>	<a href="#">See Table</a>
	Austria	<input type="checkbox"/>	<a href="#">See Table</a>
	Azerbaijan	<input type="checkbox"/>	<a href="#">See Table</a>
	Belarus	<input type="checkbox"/>	<a href="#">See Table</a>
	Belgium	<input type="checkbox"/>	<a href="#">See Table</a>
	Bosnia and Herzegovina	<input type="checkbox"/>	<a href="#">See Table</a>
	Bulgaria	<input type="checkbox"/>	<a href="#">See Table</a>
	Canada	<input checked="" type="checkbox"/>	<a href="#">See Table</a>
	Croatia	<input type="checkbox"/>	<a href="#">See Table</a>



STATISTICS



# Mobile App (Android)



Country Ranking		
RANKING	TABLE	NOTES
GDP per capita in USD adjusted by purchasing power parities, year 2013		
1	Luxembourg	90 078.8
2	Norway	66 763.7
3	Switzerland	54 094.1
4	United States	52 985.6
5	Netherlands	46 311.2
6	Ireland	46 074.3
7	Austria	45 520.7
8	Sweden	45 098.8
9	Germany	43 666.6
10	Denmark	43 457.8
11	Canada	43 247.0

Country Profile	
Canada	
Fertility	
Mean age of women at birth of first child (2011)	28.1 years
Total fertility rate (2011)	1.6 children
Gender, Decision-making	
Share of women among legislators, senior officials and managers, % (2013)	35.8 %
Share of women among members of parliament, % (2014)	25.1 %
Share of women among police staff, % (2013)	19.7 %
Gender, Education	
Proportion of men with tertiary education level, % (2012)	59.2 %



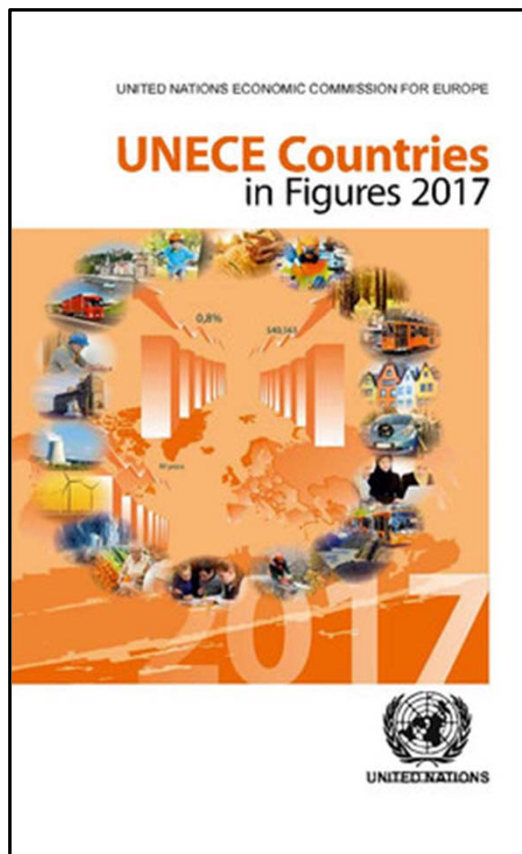


Social



STATISTICS

# Countries in Figures

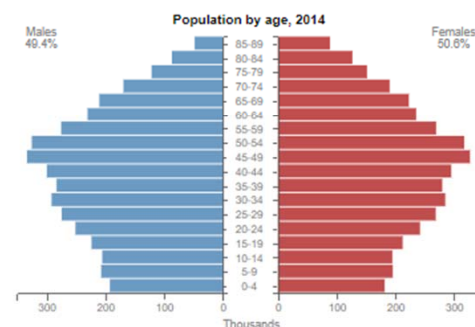


## SWITZERLAND



Capital	Bern
Area (km <sup>2</sup> )	41 285
Total population (thousands, 2014)	8 189
Population density (per km <sup>2</sup> )	198
National currency	Swiss franc (CHF)
National statistical office	<a href="http://www.bfs.admin.ch">www.bfs.admin.ch</a>

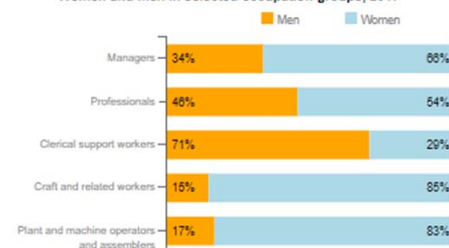
Swiss Federal Statistical Office



Life expectancy at birth, 2016	
females, years	85.6
males, years	81.7
Life expectancy at 65, 2016	
females, years	22.9
males, years	20.0
Total fertility rate, 2016	
average number of children per woman	1.5
Adolescent fertility rate, 2014	
number of live births per 1000 women aged 15-19	3.0
Mean age of women at birth of first child, 2014	
age in years	30.7

Women in the labour force, 2017	
percentage of total for both sexes	46%
Gender pay gap	
monthly earnings, 2014	15%
hourly wage, 2016	17%
Women in part-time employment, 2017	
percentage of employed women	62%
Female tertiary students, 2013	
percentage of total for both sexes	50%
Female victims of homicide, 2015	
percentage of total for both sexes	42%
Women researchers, 2012	
percentage of total for both sexes	32%

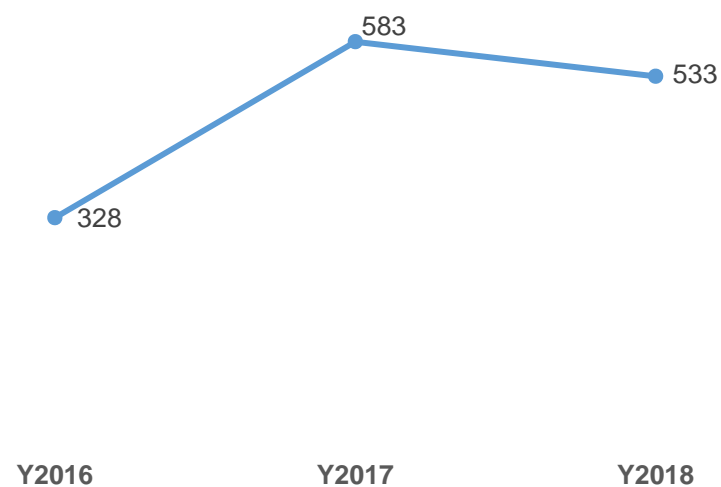
Women and men in selected occupation groups, 2017



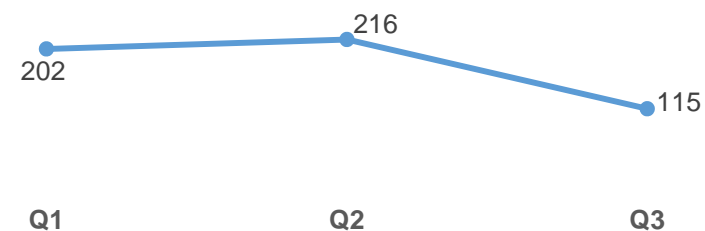


# Download Statistics

No. Downloads (in thousands)  
2016 to October 2018



No. Downloads (in thousands)  
Quarterly period for 2018



Source: PC Axis Stats App



# Top Visits by Country

- Russia
- United States
- China
- Ukraine
- Spain
- Germany

Source: Google Analytics

# Thank you for your attention!

[unece.org/data](http://unece.org/data)  
[support.stat@unece.org](mailto:support.stat@unece.org)

UNECE Statistical Division

