

Committed to Connecting the World  International Telecommunication Union 

UN ECE
Conference of European Statisticians
Joint Task Force on Environmental Statistics and Indicators
Room IX, Geneva, Switzerland
29-30 June 2017

The Global e-waste Statistics Partnership

 UNITED NATIONS UNIVERSITY   **ISWA** International Solid Waste Association 

Esperanza Magpantay
 Senior Statistician
 ICT Data and Statistics Division
 Telecommunication Development Bureau
 International Telecommunication Union (ITU)



ITU has a long history of working on ICT statistics



Measuring the Information Society Report 2016



DATABASE for the World



MANUAL for Measuring ICT Access and Use by Households and Individuals 2014



ICT FACTS AND FIGURES 2016




WORLD TELECOMMUNICATION/ICT INDICATORS SYMPOSIUM
wtis16
 BOTSWANA
 21-23 November 2016
 Gaborone, Botswana


BIG data for measuring the information society


Expert Groups: EGH, EGTI

PARTNERSHIP ON MEASURING ICT FOR DEVELOPMENT



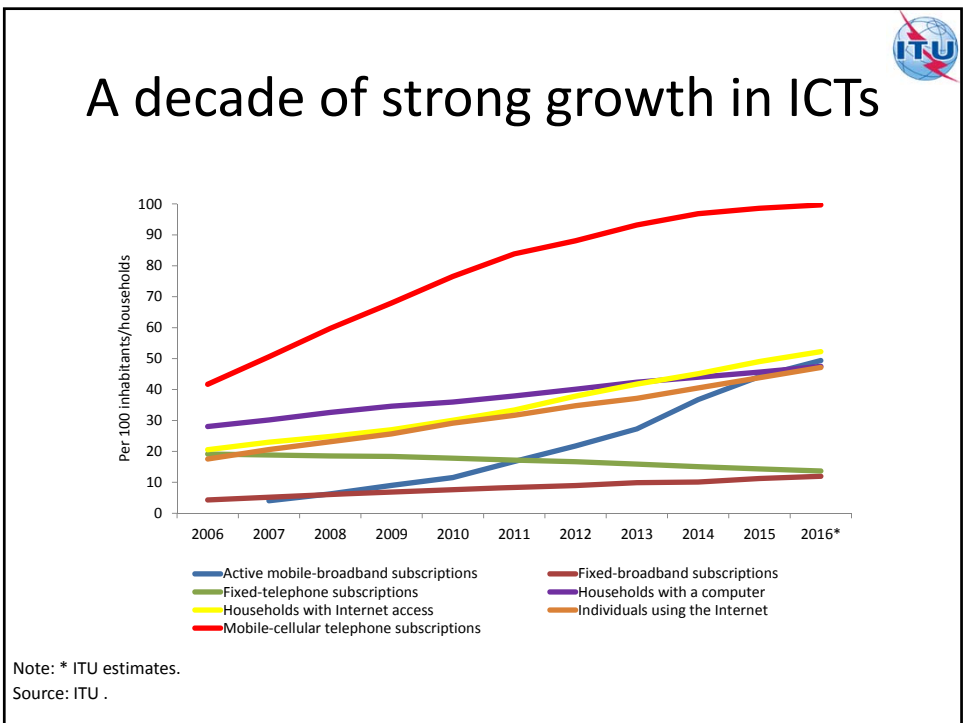
ITU has a role to play on e-waste

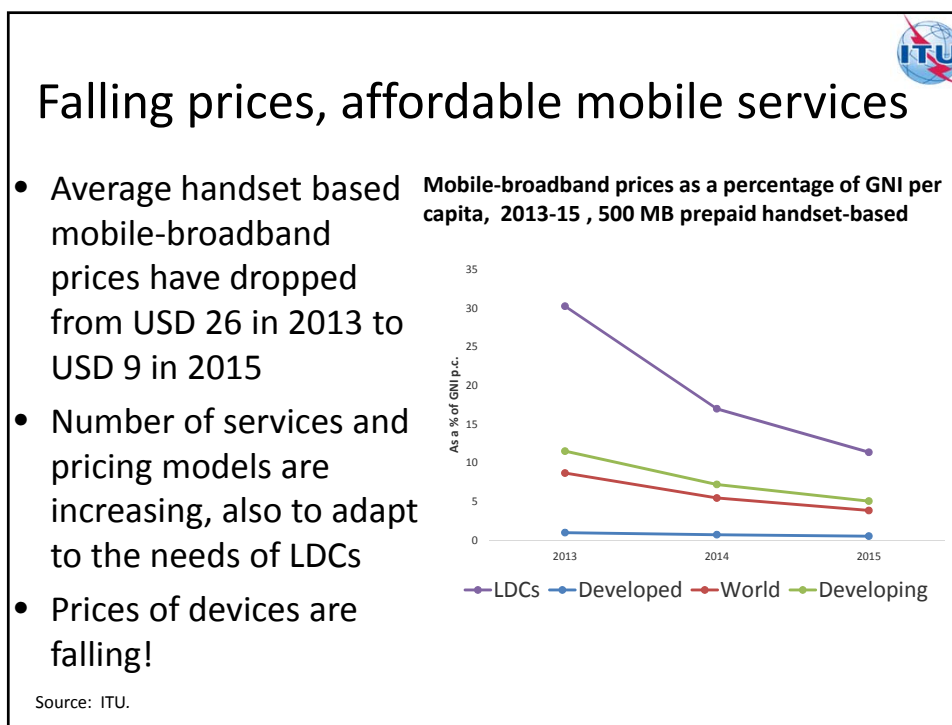
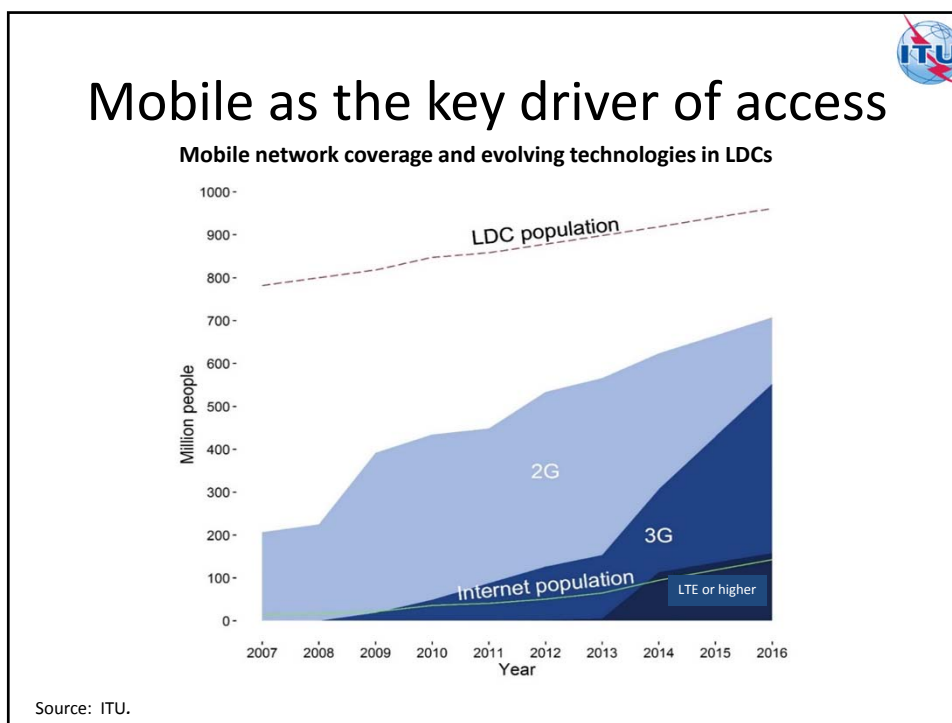




- Develop policies
- Set standards/recommendations
- Undertake assessment of the size of e-waste
- Achieve environmentally sound management of e-waste

Connect 2020 Target 3.2: - Volume of redundant e-waste to be reduced by 50% by 2020





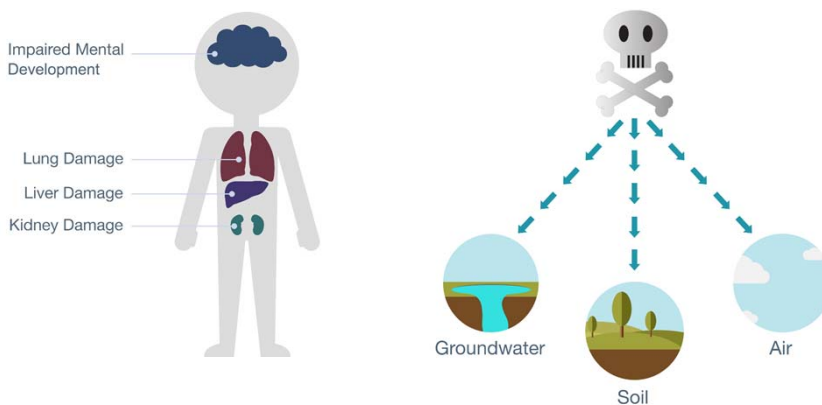


Amount of e-waste is growing

- More people joining the information society
- Product lifecycles become shorter
- Many designs do not support repair or reuse



E-waste poses health risks if treated inadequately



Better e-waste data as an important first step

- Evaluate developments over time
- Set and assess targets
- Identify best practices of policies
- Minimize e-waste generation
- Prevent illegal dumping
- Promote recycling
- Create jobs in the reuse, refurbishment and recycling sectors
- Help achieve SDG 11 and 12

Feedback from the private sector

- Reliable and harmonized e-waste dataset and time series are necessary to evaluate e-waste performance of countries, to set targets, and to track progress
 - Data are needed to create a business plan, to manage and assess Producer Responsibility Organizations (PRO) and for recyclers
 - How much electrical and electronic equipment (EEE) is placed on the market helps to predict future volumes of waste (WEEE)
 - How much EEE/WEEE gets exported for reuse/recycling and how much e-waste gets exported illegally?
-

A common set of indicators



**PARTNERSHIP ON
MEASURING ICT
FOR DEVELOPMENT**

- 1) Total EEE put on market
This represents the size of the national e-goods market
- 2) Total e-waste generated (unit kg/inh)
This represents the size of the national e-waste market
- 3) E-waste collection (unit kg/inh)
This represents the amount of e-waste that is collected as such
- 4) E-waste collection rate = e-waste collected / e-waste generated * 100 per cent
This indicator represents the performance of the formal collection

Global e-waste statistics partnership



Formed in January 2017 to address the e-waste challenge by improving e-waste data



UNITED NATIONS
UNIVERSITY
UNU-VIE SCYCLE
Sustainable Cycles Programme



ISWA
International Solid Waste Association



Objectives of the Partnership

- Raise awareness and build capacity to help countries produce reliable and comparable e-waste statistics
- Collect data from countries to track developments over time and to inform policy makers and industry
- Enhance the understanding and interpretation of global e-waste data and communicate the data to the general public and stakeholders
- Identify best practices of global e-waste management
- Map recycling opportunities from e-waste
- Inform on Sustainable Development Goals (SDG) 11.6 and 12.5 and track the ITU Connect 2020 target 3.2.



UNITED NATIONS
UNIVERSITY

UNU-VIE SCYCLE

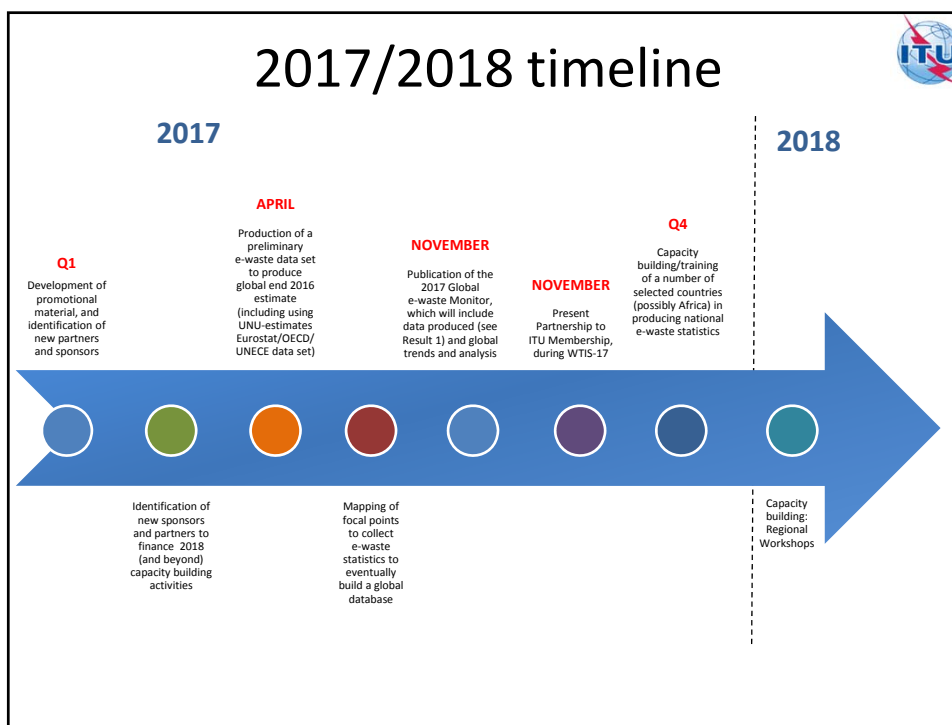
Sustainable Cycle Programme



ISWA

International Solid Waste Association







Download our [flyer](#), watch our [video](#), or contact us at:
e-waste@itu.int



UNITED NATIONS
UNIVERSITY

UNU-VIE SCYCLE
Sustainable Cycles Programme



ISWA
International Solid Waste Association

