



REPUBLIC OF SLOVENIA
STATISTICAL OFFICE

SURS We count. Today for tomorrow.

National Inventory System in Slovenia

Mojca Suvorov
Director of Environmental Statistics

REPUBLIC OF SLOVENIA
STATISTICAL OFFICE

www.stat.si/eng

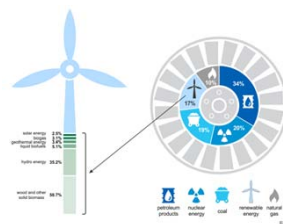
Setting the scene

- The Statistical Office of the Republic of Slovenia is the main producer and coordinator of national statistics in Slovenia.
- Statistical surveys, official and other administrative data collections; statistical office has full legal cover to use free of charge for statistical purposes all available administrative data of the public and private sectors (records, registers, databases, etc.).
- Energy statistics in Slovenia as a part of national harmonised statistics – from 2001.

National inventory system

- Statistical Office of the Republic of Slovenia (SURS):

Statistical data producer



- Slovene Environmental Agency (SEA):
GHG inventory producer

SURS - statistical data producer

- Annual and monthly statistical surveys.
- Administrative data, examples:
 - energy; Ministry of Infrastructure, Energy Directorate,
 - agriculture; Ministry of Agriculture, Forestry and Food, Agency for Agriculture Market and Rural Development, The Administration for Food Safety, Veterinary and Plant Protection),
 - waste; Ministry of the Environment.
- Data modelling (energy consumption in households by end use).

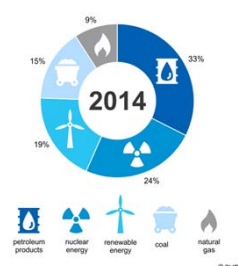


REPUBLIC OF SLOVENIA
STATISTICAL OFFICE

www.stat.si/eng

Focus on energy statistics

- Outputs of energy statistics:
 - Basic energy statistics (production, import, export, stocks, transformation input and outputs, losses, final consumption),
 - National energy balance,
 - Physical Energy Flow Accounts.



REPUBLIC OF SLOVENIA
STATISTICAL OFFICE

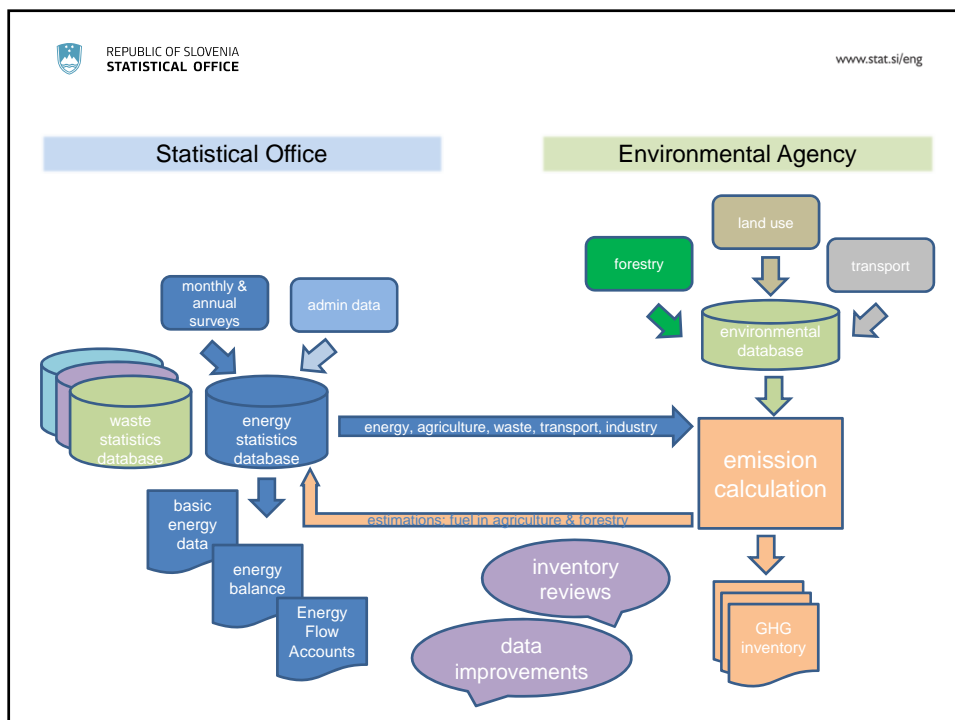
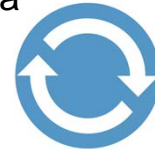
www.stat.si/eng

SEA – GHG inventory producer

- Primary source of data for GHG inventory: statistical data (energy, agriculture, waste, transport, industry).
- Other data sources:
 - Slovenian Infrastructure Agency: density of transport,
 - ETS data,
 - Slovenian Forestry Institute: forestry data,
 - various sources: land use data,
 - SEA's environmental database.

Co-operation loop

- Data flow in both ways.
- In the process of emission calculation SEA estimates data on fuel use in agriculture and forestry.
- Estimations provided to SURS - data included in the energy balance.
- SURS involved in inventory reviews - data consistency and improvements.



Communication

It is important to talk (in person or virtually) with each other!

- National level:
 - statistical advisory committees - regular annual meetings; users needs and challenges from the „statistical world“, new legislation,
 - informal communication, occasional meetings; privilege of a small country „everybody knows each other“.
 - Memorandum of understanding; clear division of work and responsibilities,
- International level:
 - meetings; bring together both communities, get to know each other, exchange good practices,
 - share; documents important for both communities.

Good practices

- Access and use of administrative data.
- Data exchange.
- Memorandum of understanding.
- Distribution of documents to both communities.
- Communication.

