

Industrial waste in the UK

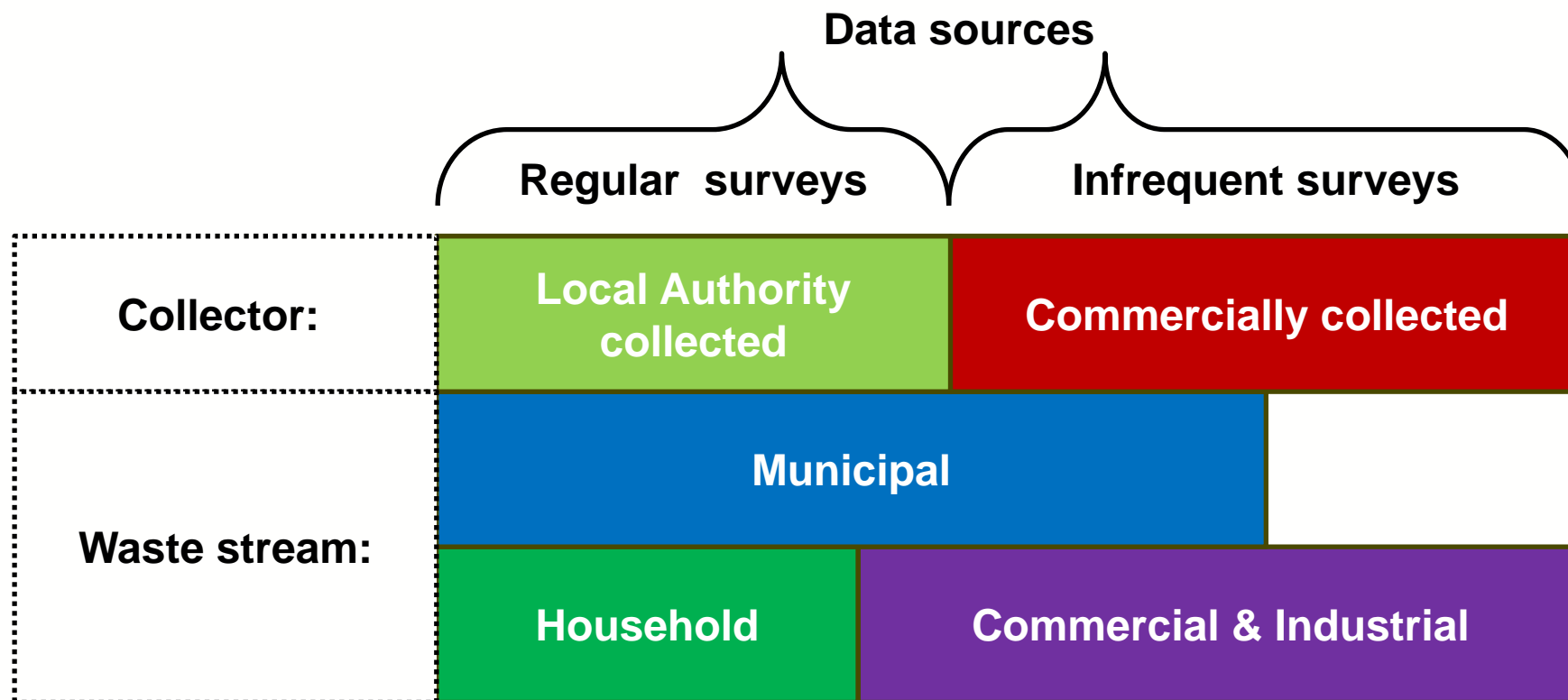
David Lee

Waste Statistics Team, Defra

Agenda

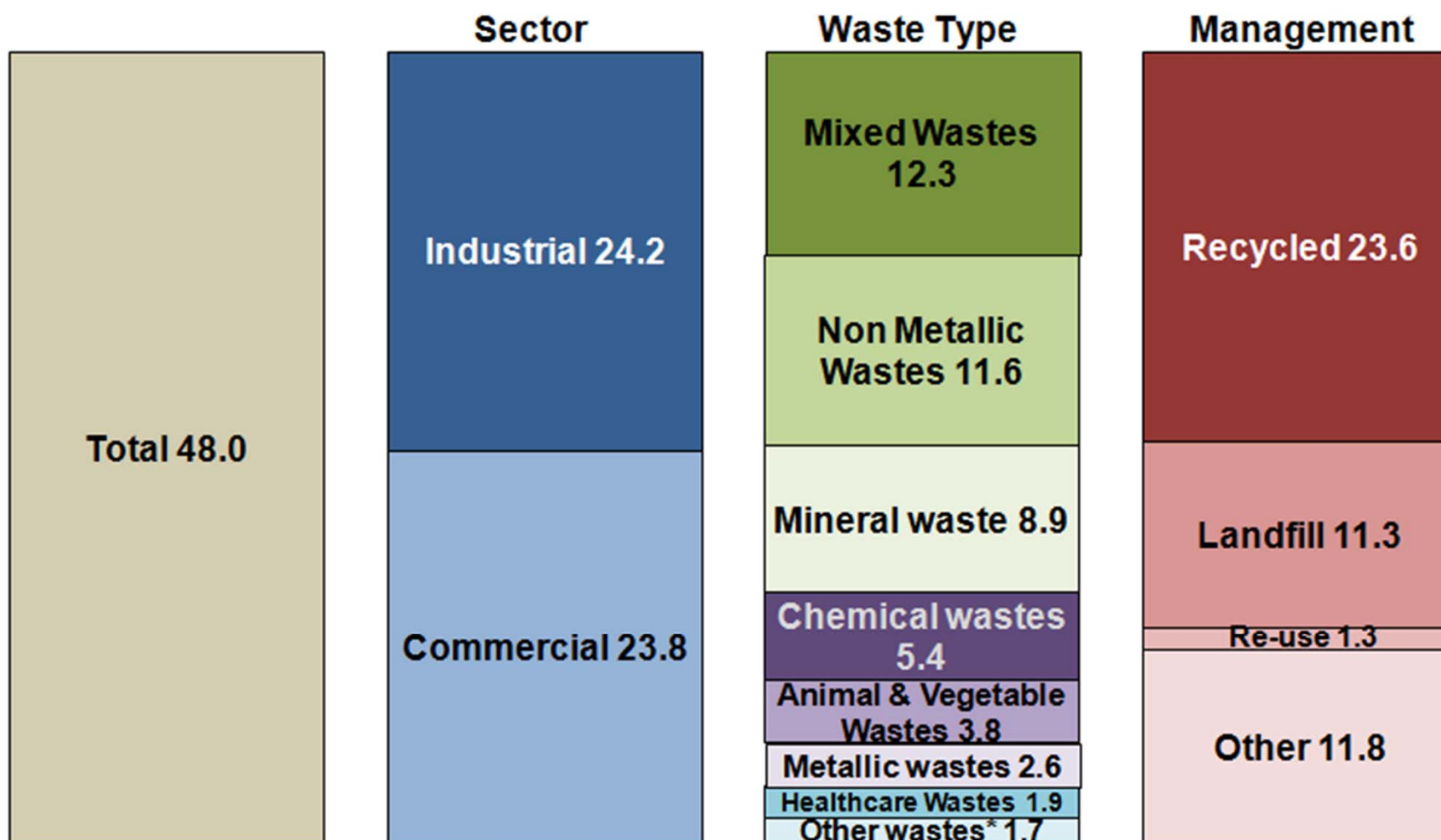
- Data sources and sectors
- Data collection
- Features of the Industrial sector
- Issues

Sources and Sectors



Excludes: Construction and Demolition, Mining waste

Headline Results



Source: [Defra](#), [Environment Agency](#)

*Other includes common [sludges](#), discarded equipment and non-wastes

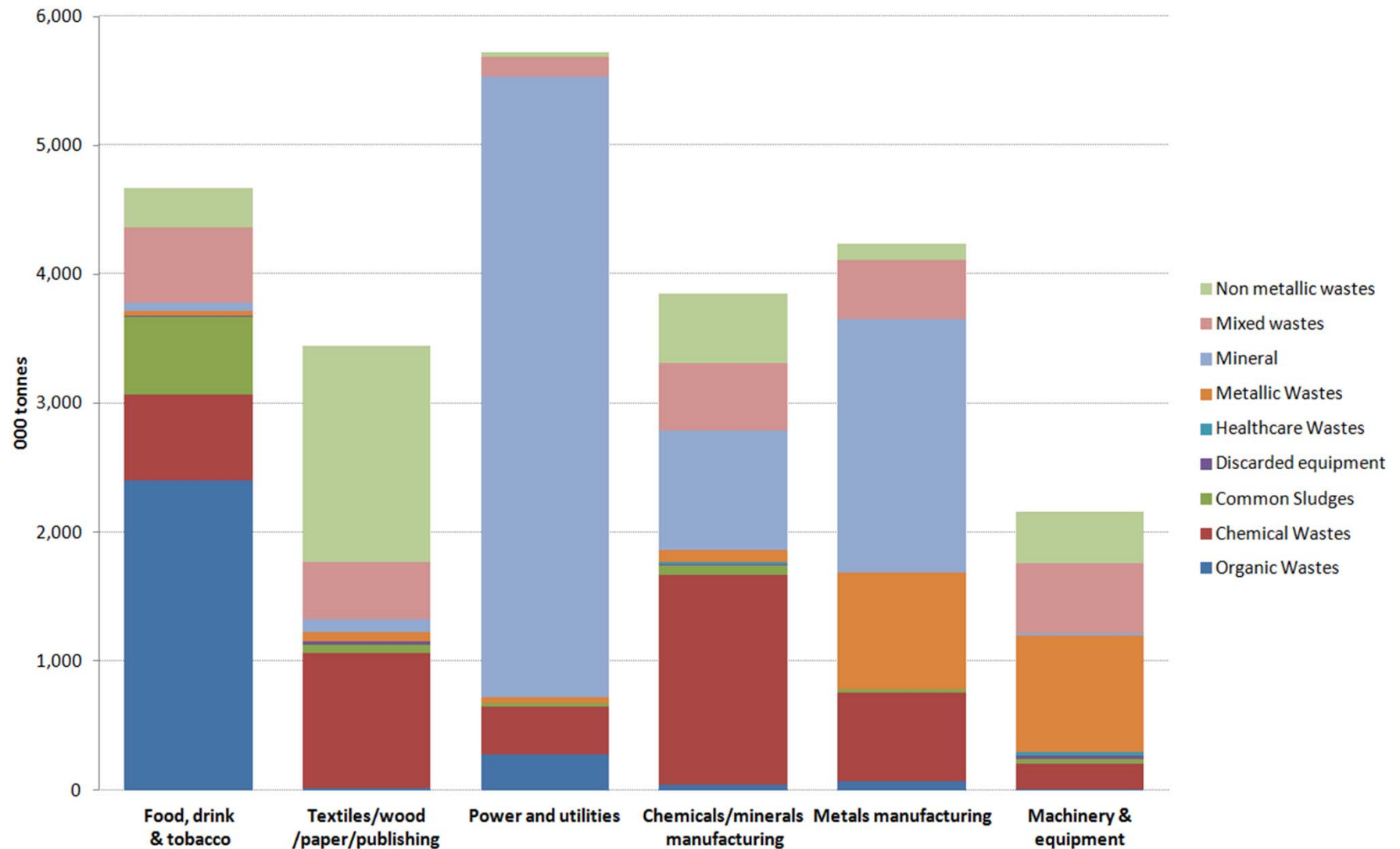
Million tonnes

Survey Design and Issues

- 6000 businesses surveyed
- 12 business sectors (6 Industrial)
- Face to face, telephone and HQ information
- 10 months to complete
- Cost around £1m (€1.2m)

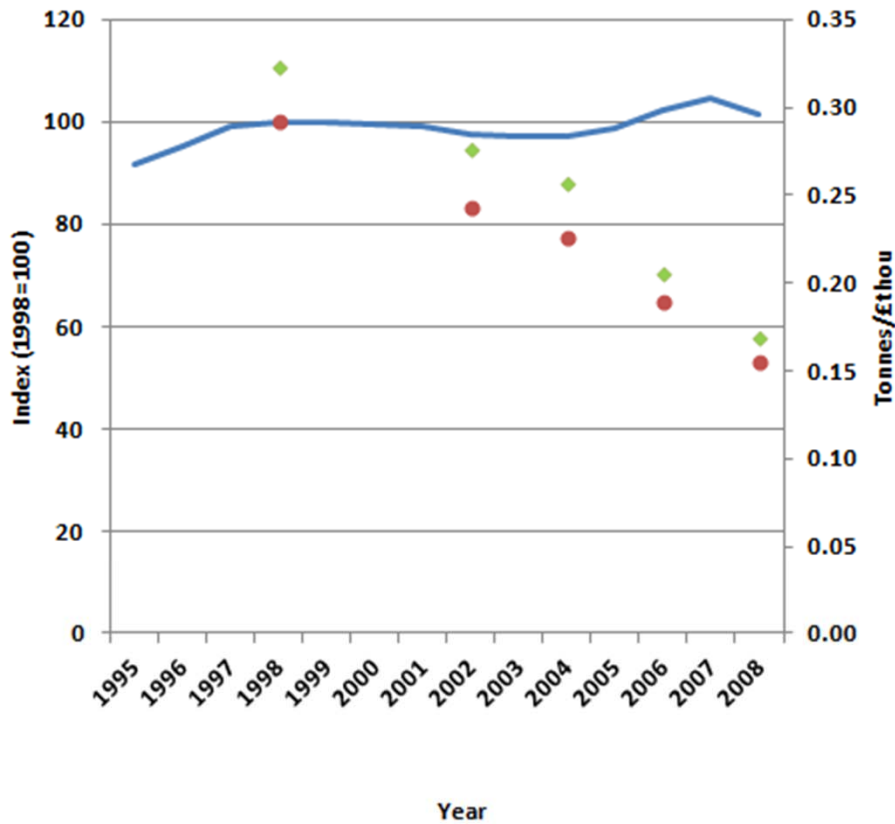
Industrial waste breakdown

Industrial waste 2009, England

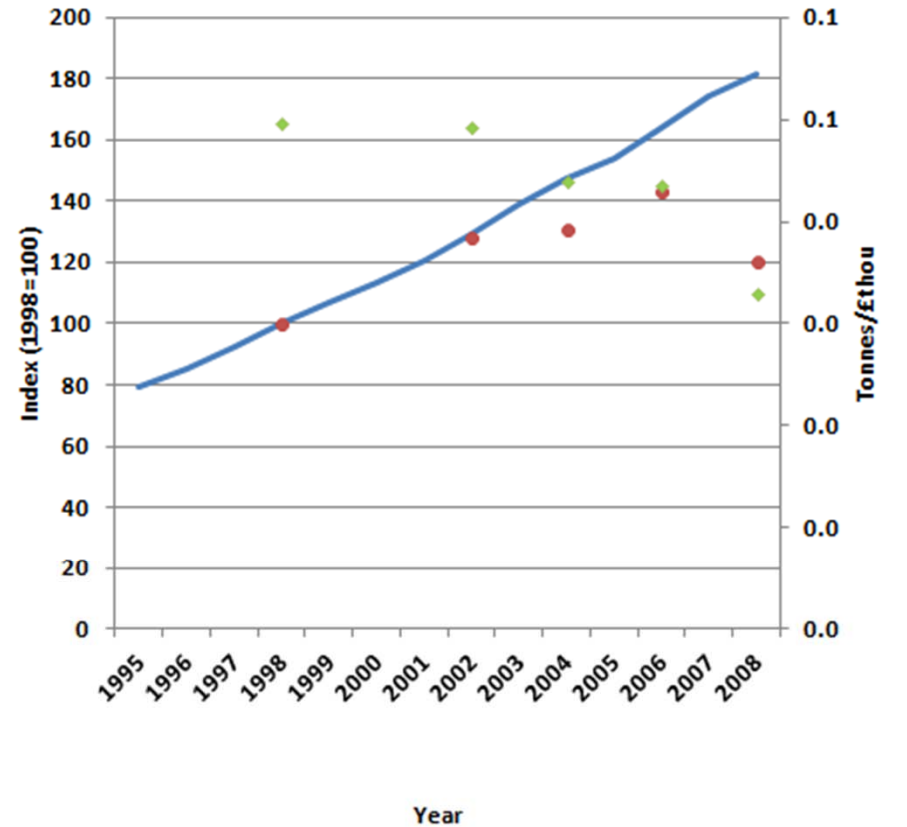


Decoupling

Industrial sector: Waste arisings indexed against GVA (1995-2008)



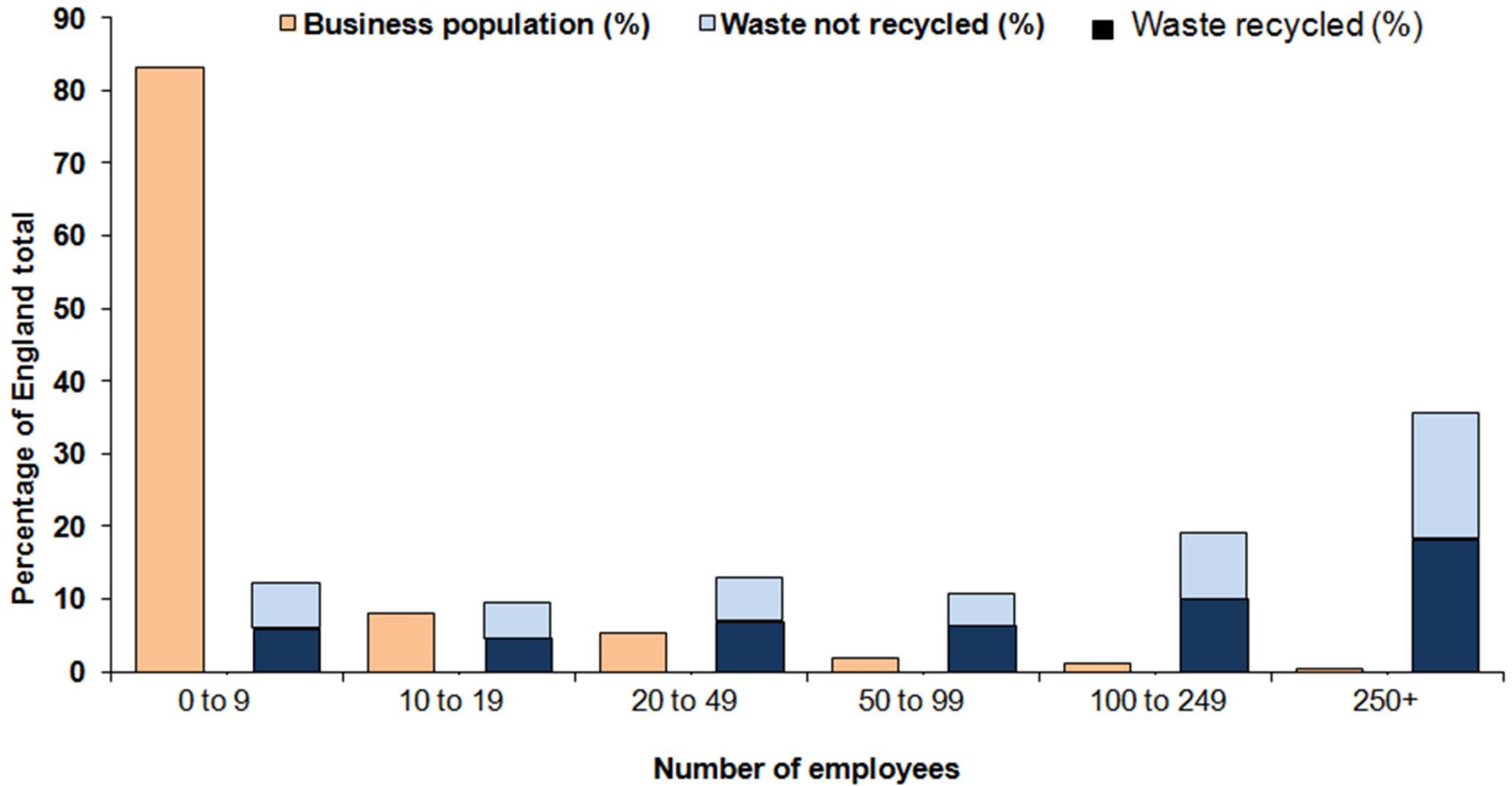
Commercial sector: Waste arisings indexed against GVA (1995-2008)



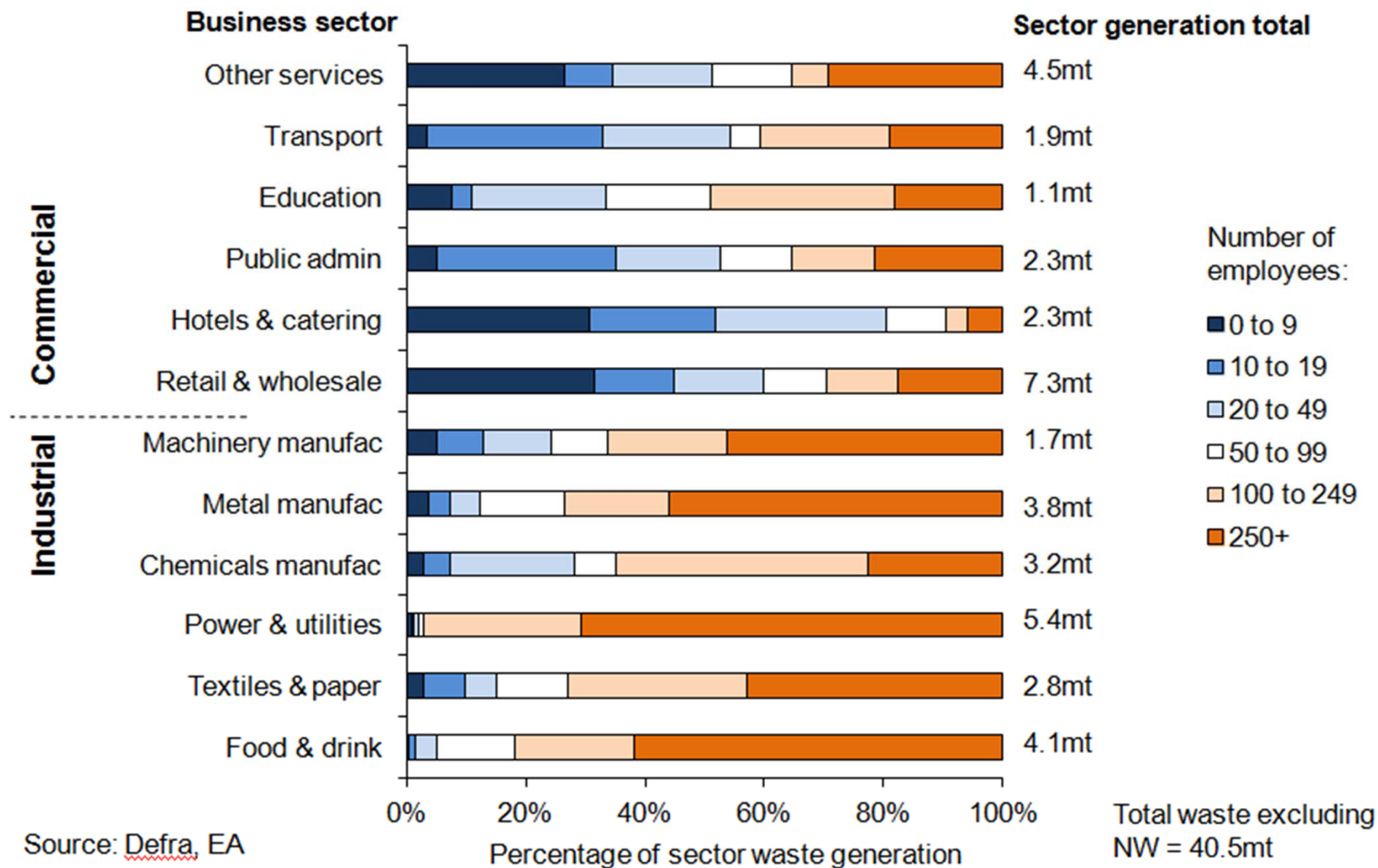
— GVA index ···· Waste arisings index ◆ Waste per unit GVA

— GVA index ···· Waste arisings index ◆ Waste per unit GVA

Business populations



Business size



Lessons/Issues

- Access to businesses
- Access to data – gaps, inconsistencies
- Validation issues
- Methodologies – measurement, estimation

Solutions?

- Collective approach (contractors, agencies, NGOs)
- Adaptability (fieldwork feedback, HQ data)
- Intensive validation
- Electronic Duty of Care?

Thank you



David Lee

david@defra.gsi.gov.uk

+44 (0) 20 7238 4852