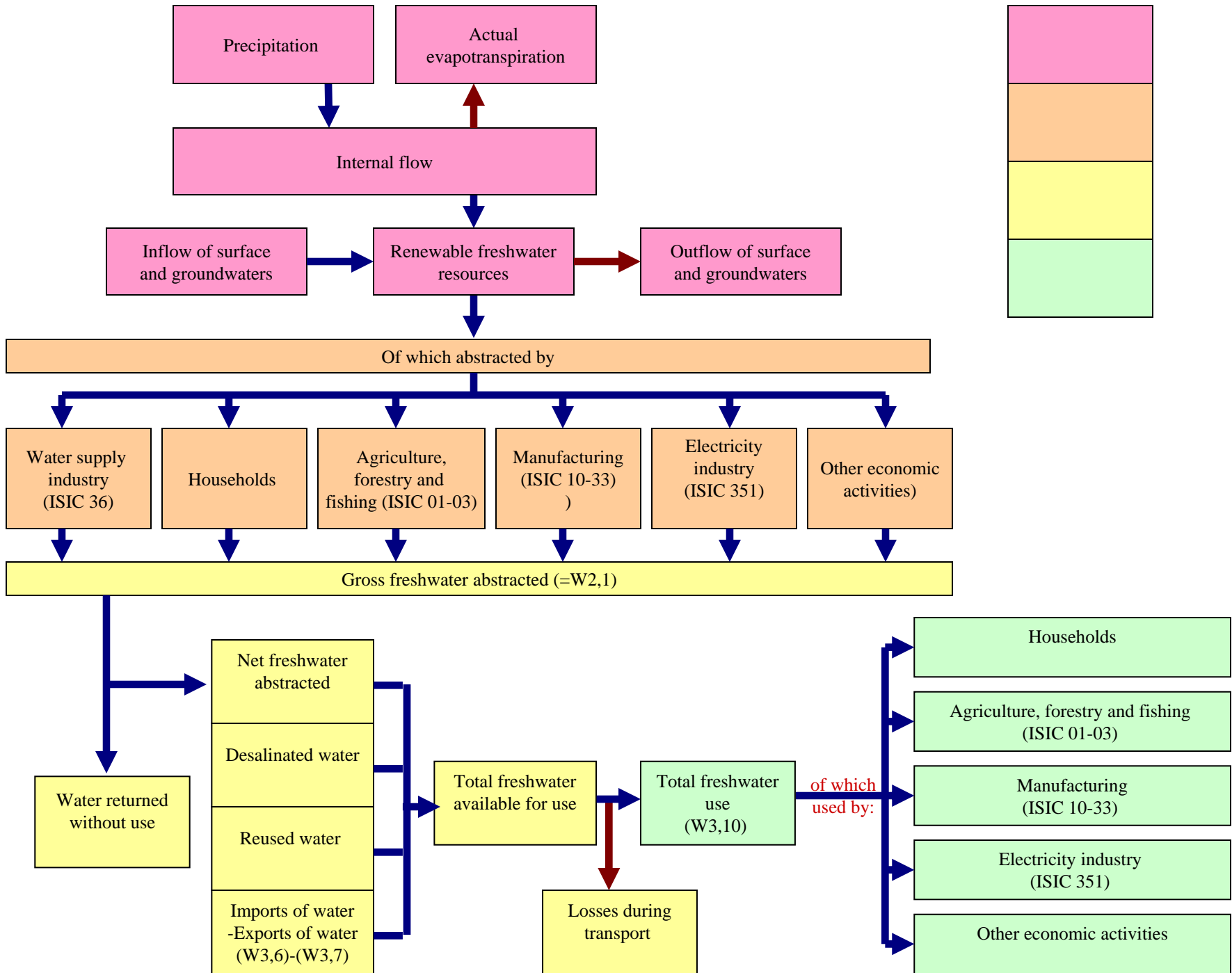
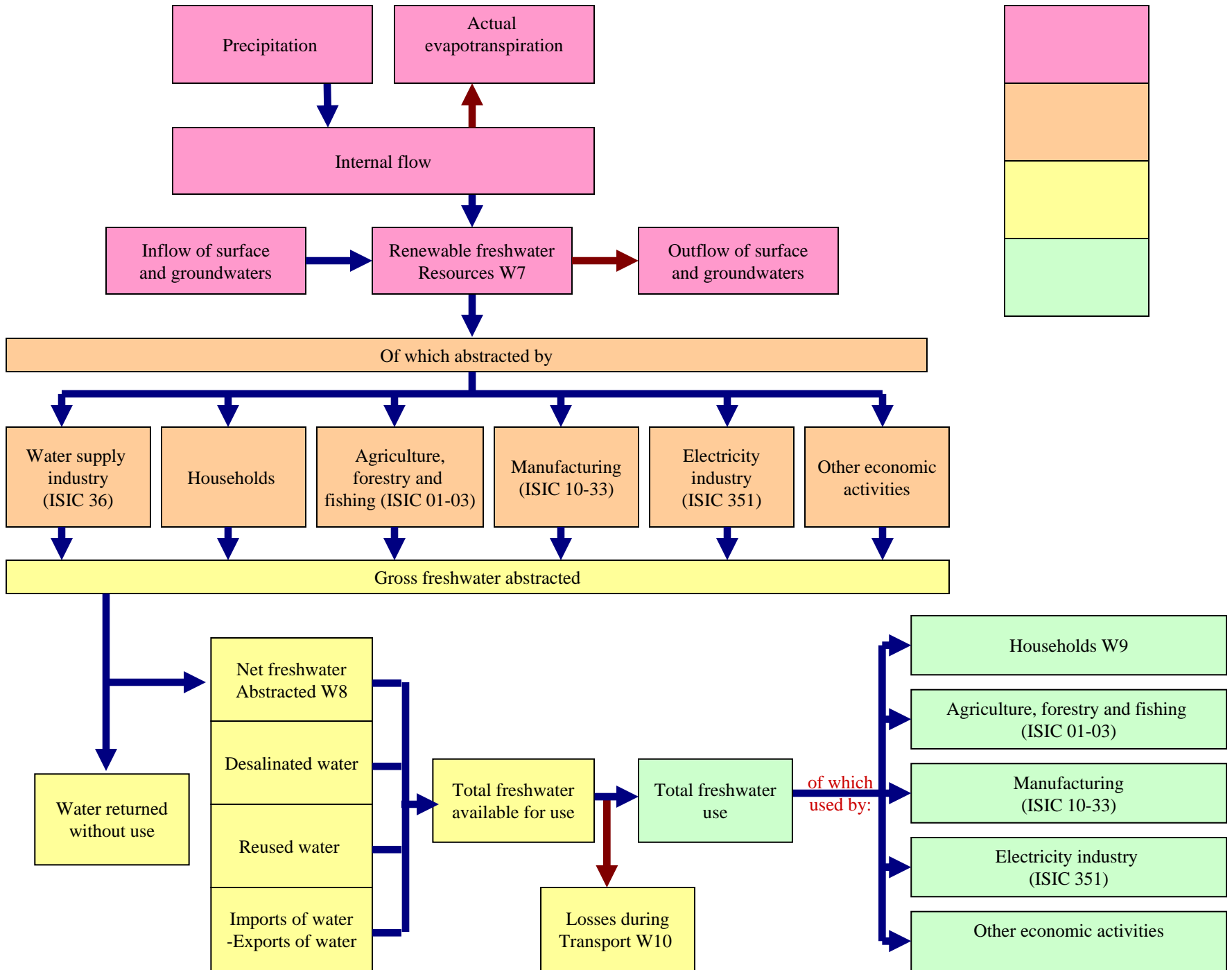


Water Indicators



Existing water indicators

- Renewable freshwater resources (total) (W7)
- Freshwater abstraction (total, per RFR, per act) (W8)
- Household water use (per cap) (W9)
- Water losses (total, per abstr) (W10)
- Reuse and Recycling (W11 - ???)



Recommended additional indicators A

- Total water use (total and per act)

TWU = water abstracted + exports – imports
+ desalinated water + reused water (?) –
losses

(per GDP?)

Abstracted for own use (abstractor=user)

Abstracted for distribution (water supply industry, user different)

Recommended additional indicators B

- Water supply industry (???)
 - total supply by supply categories (self, wsi)
 - population connected

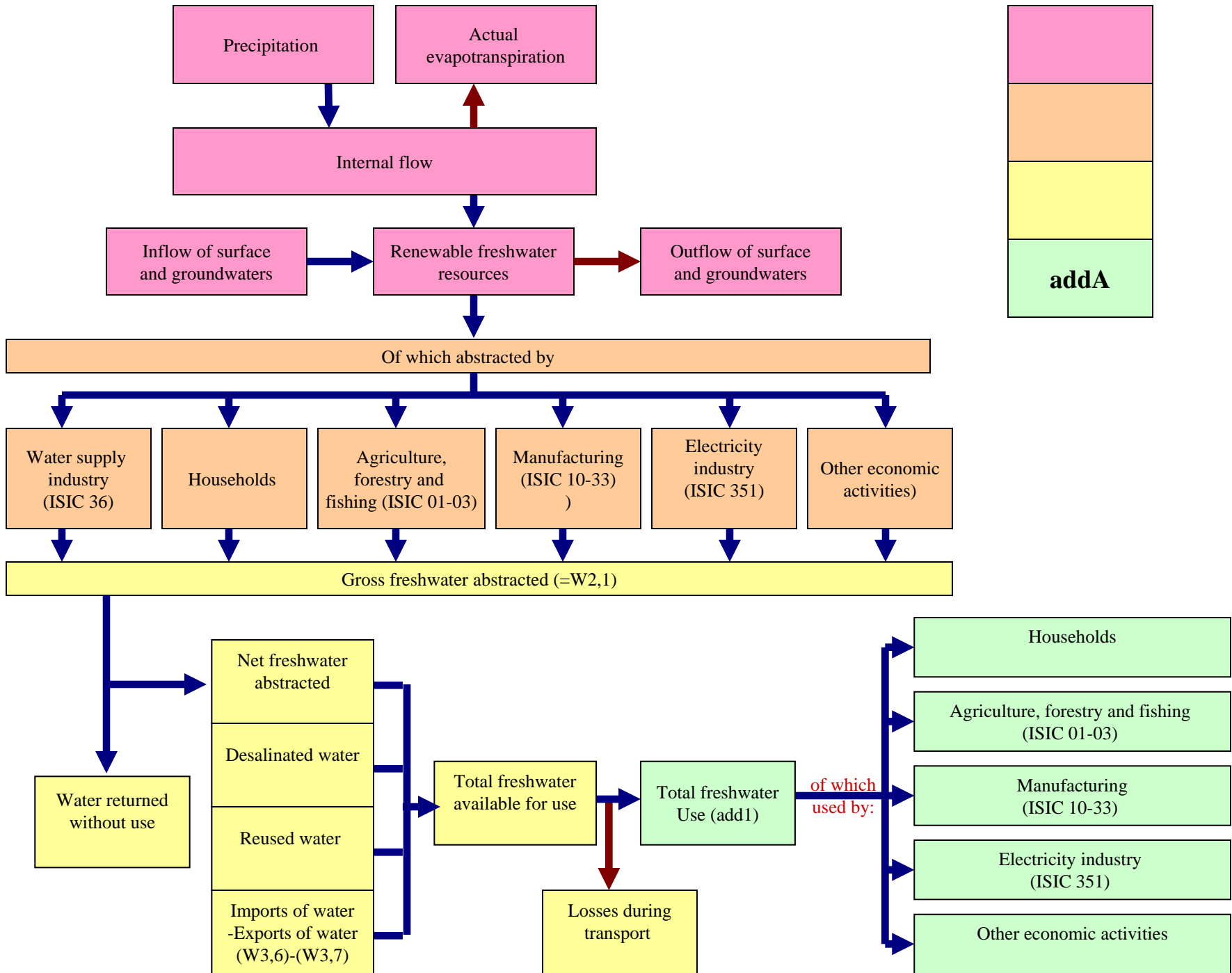
Title misleading

Text confusing

Two completely different indicators

First: share of WSI in total supply (not very much different from abstraction by WSI)

Second: access to water supply (part of MDG)



- Suggestion:
 - Break it into two indicators
 - Pop connected to WWT
 - Either total water use, or
 - Water supplied by WSI (public water supply) to economic activities and households

Wastewater indicators

- Existing indicator: non treated wastewater
- Recommended new:
 - population connected to WWT (add C)
 - WWT facilities (add D)

C – complements pop connected to WSI, access indicator (part of MDG)

D – infrastructure. No full picture of WW treatment

Maybe volumes of treated WW or volume of BOD removed instead.

Suggestion

Group indicators within “water”

- Water management indicators
- Wastewater management indicators
- Access indicators
- Water quality indicators