



**THE GLOBAL GOALS**  
For Sustainable Development

# Open Data & The U.S. National Reporting Platform *for* Sustainable Development Goals

April 2018

@usdatagov / @philipashlock



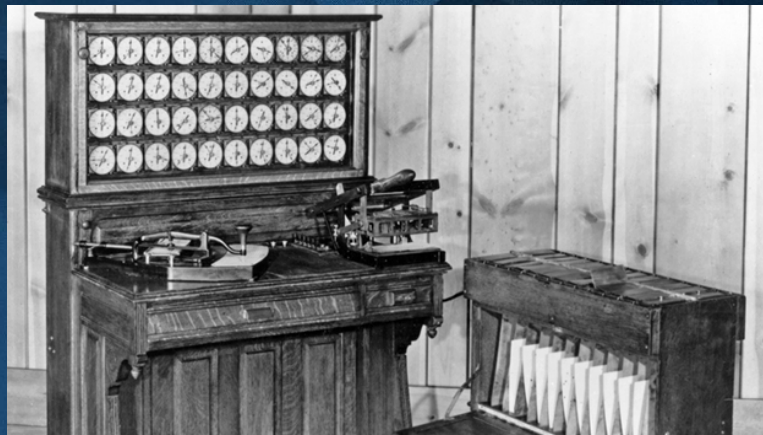
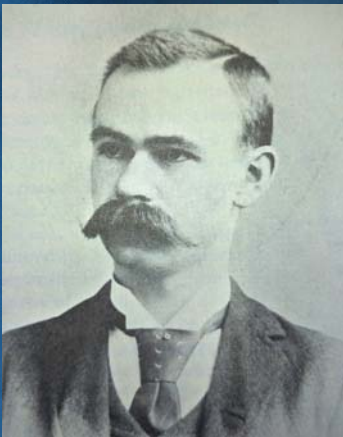
## Overview

---

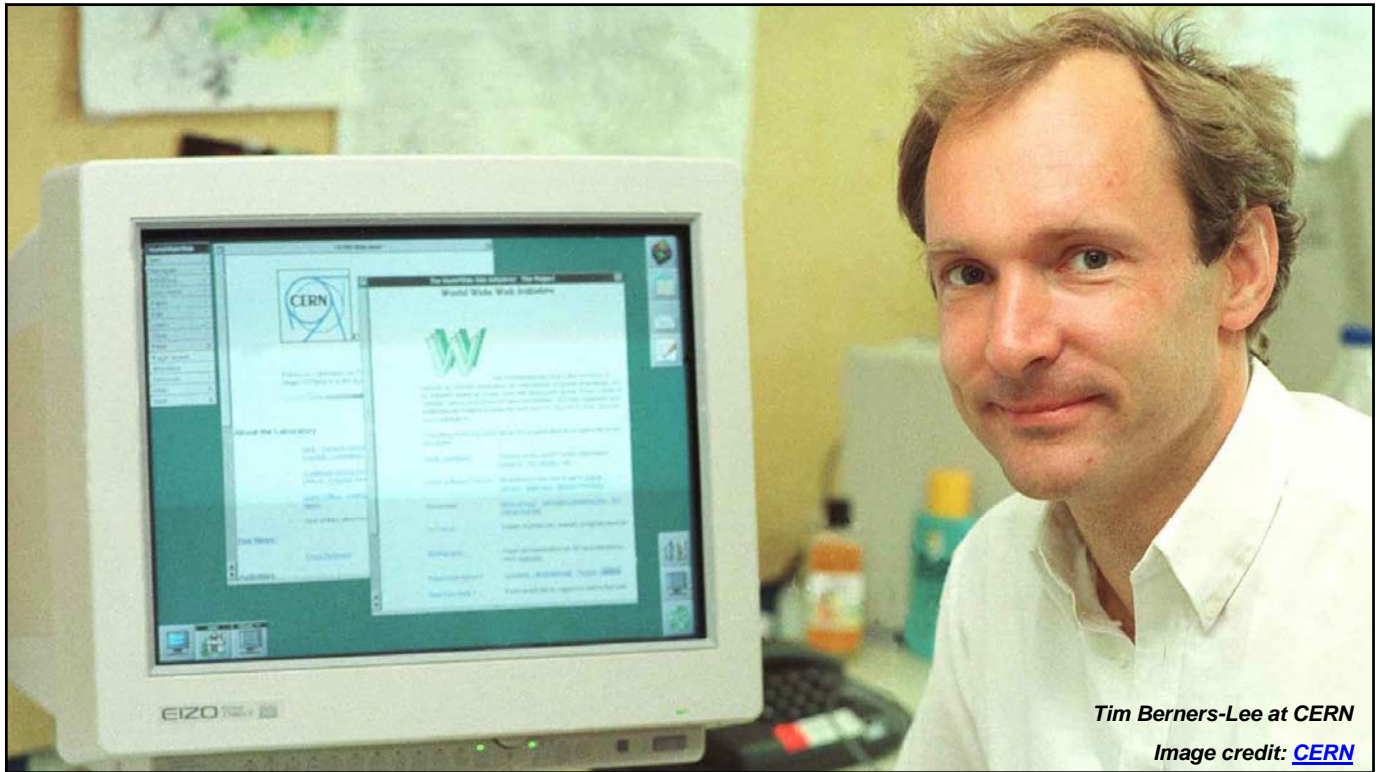
- History of data, open data, & current status
- Current U.S. National Reporting Platform
- Future work

# *History*

## *1890 Census*





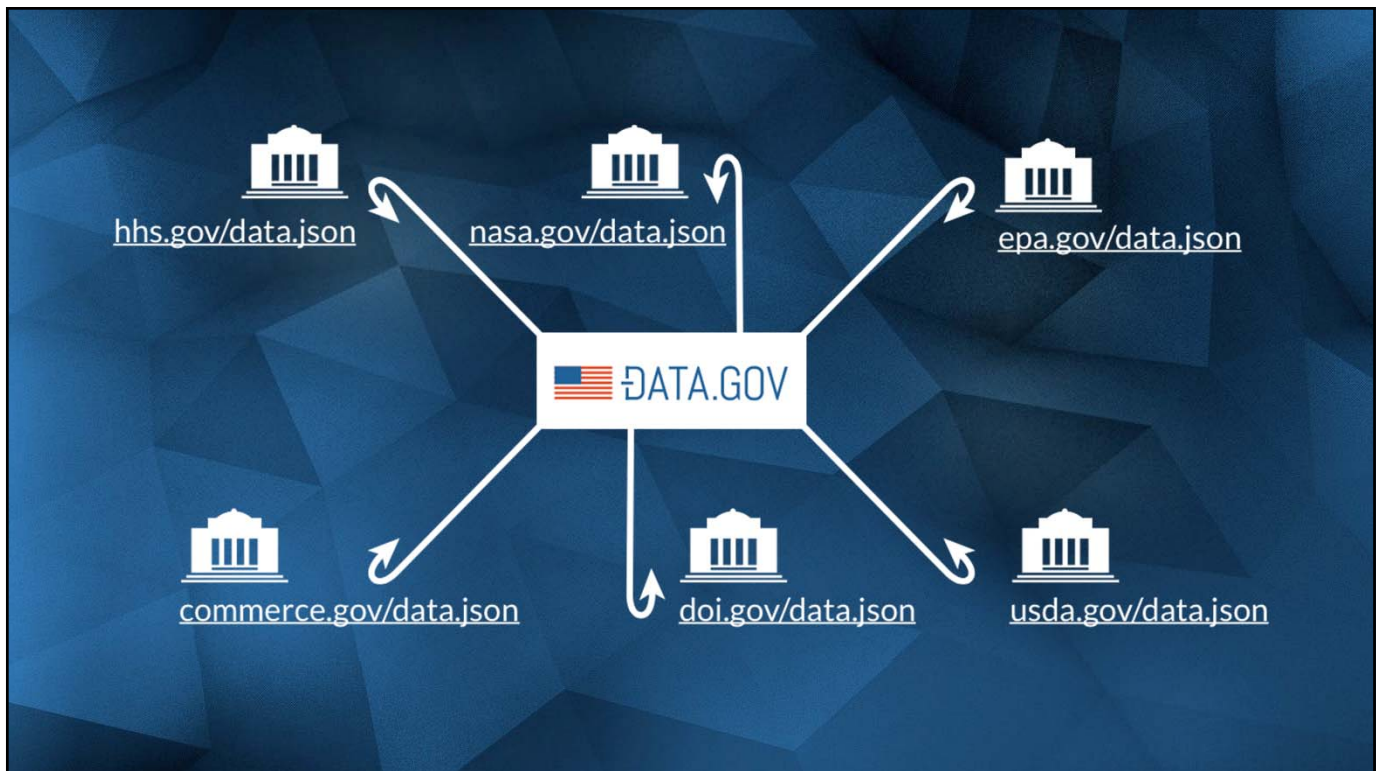
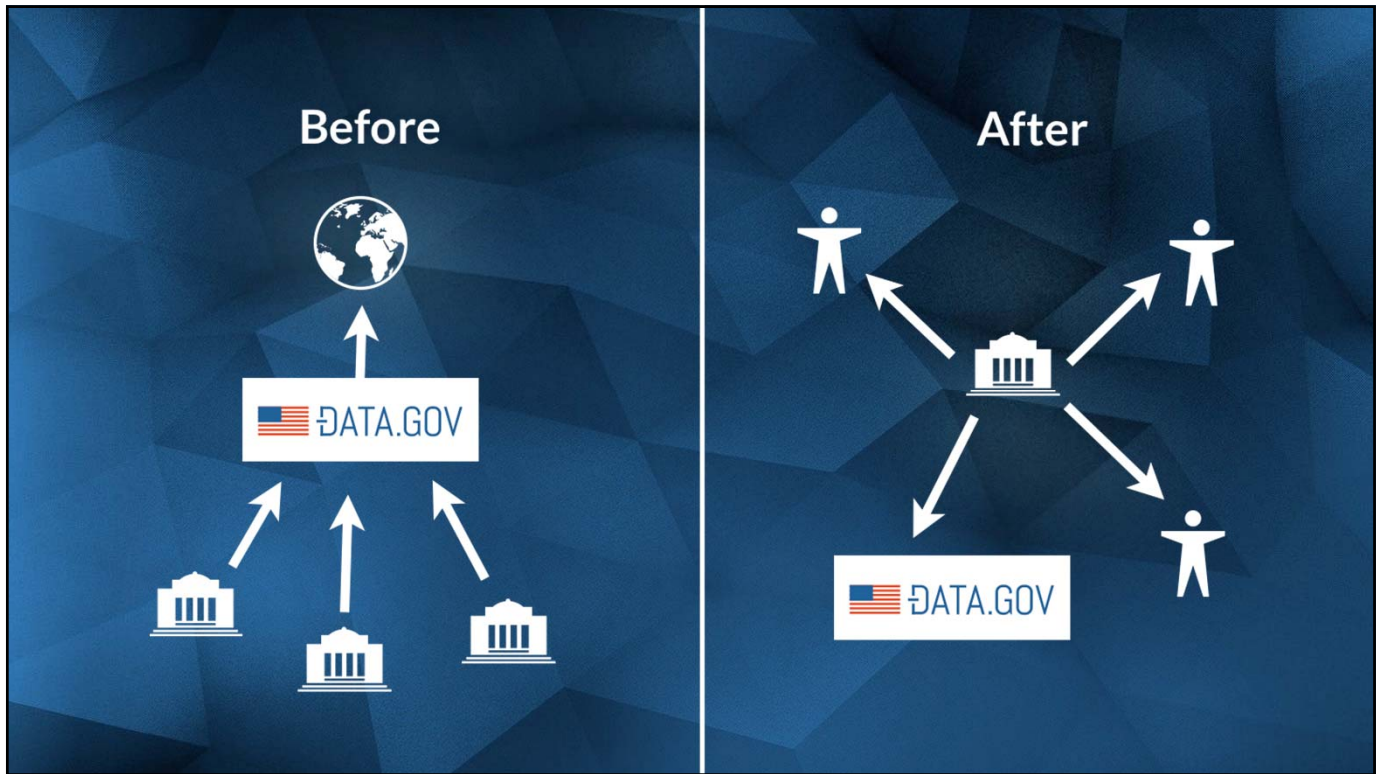


*Tim Berners-Lee at CERN*

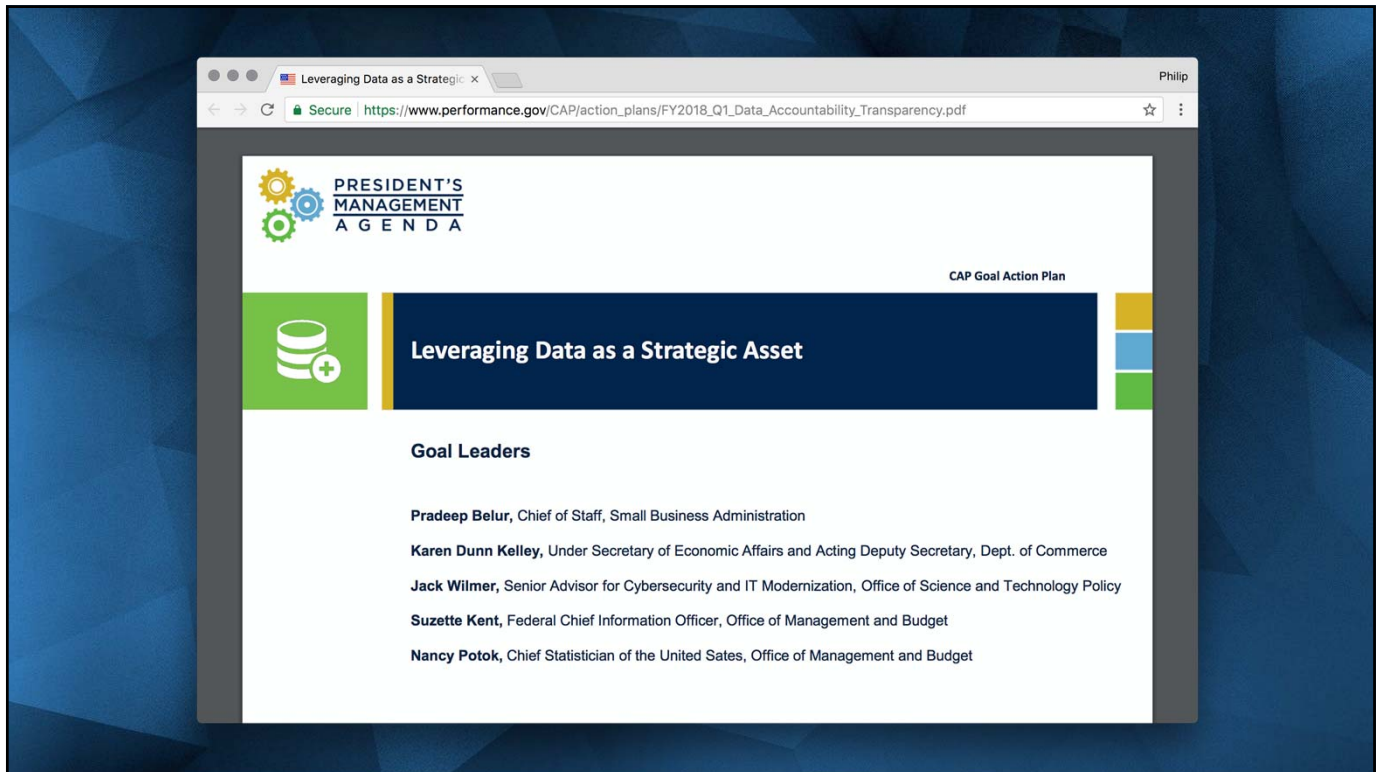
*Image credit: [CERN](https://cern.ch)*

## Some Notable Policies

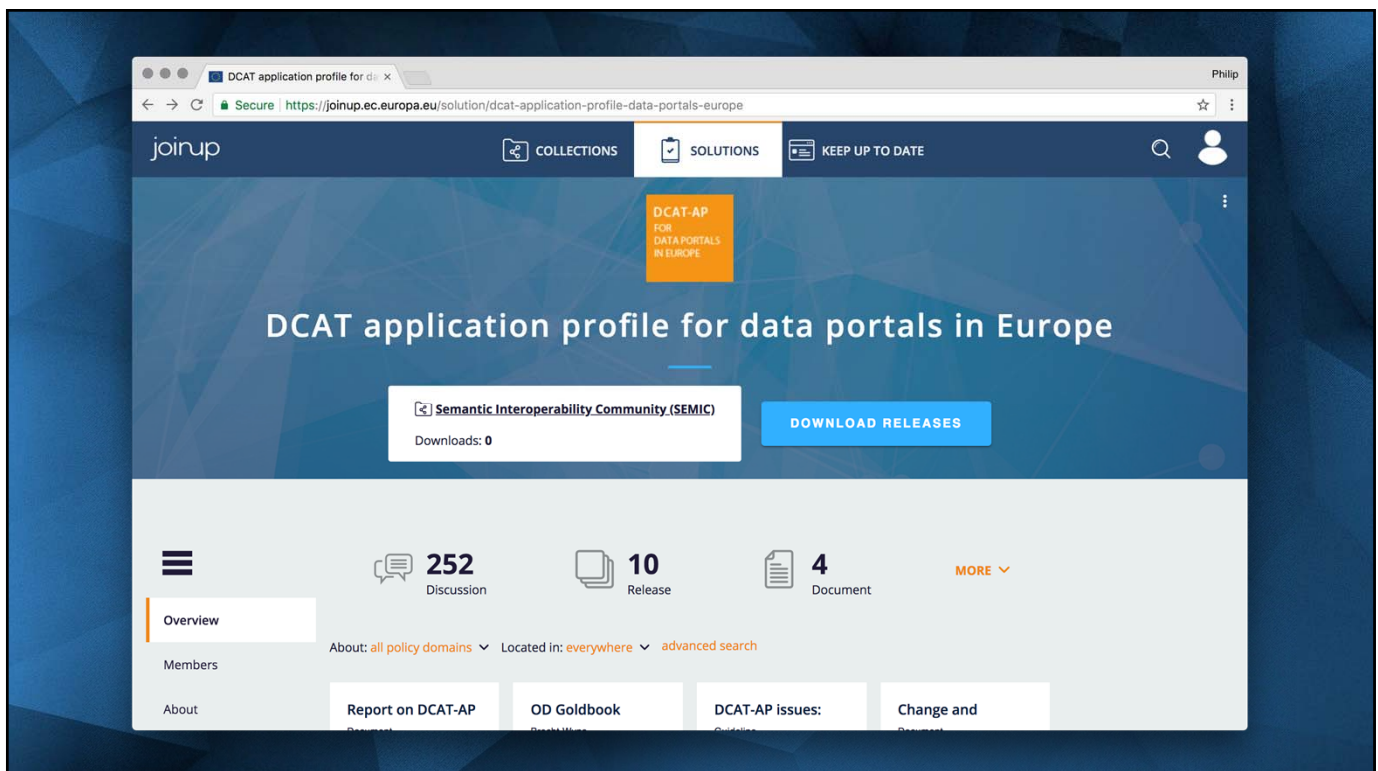
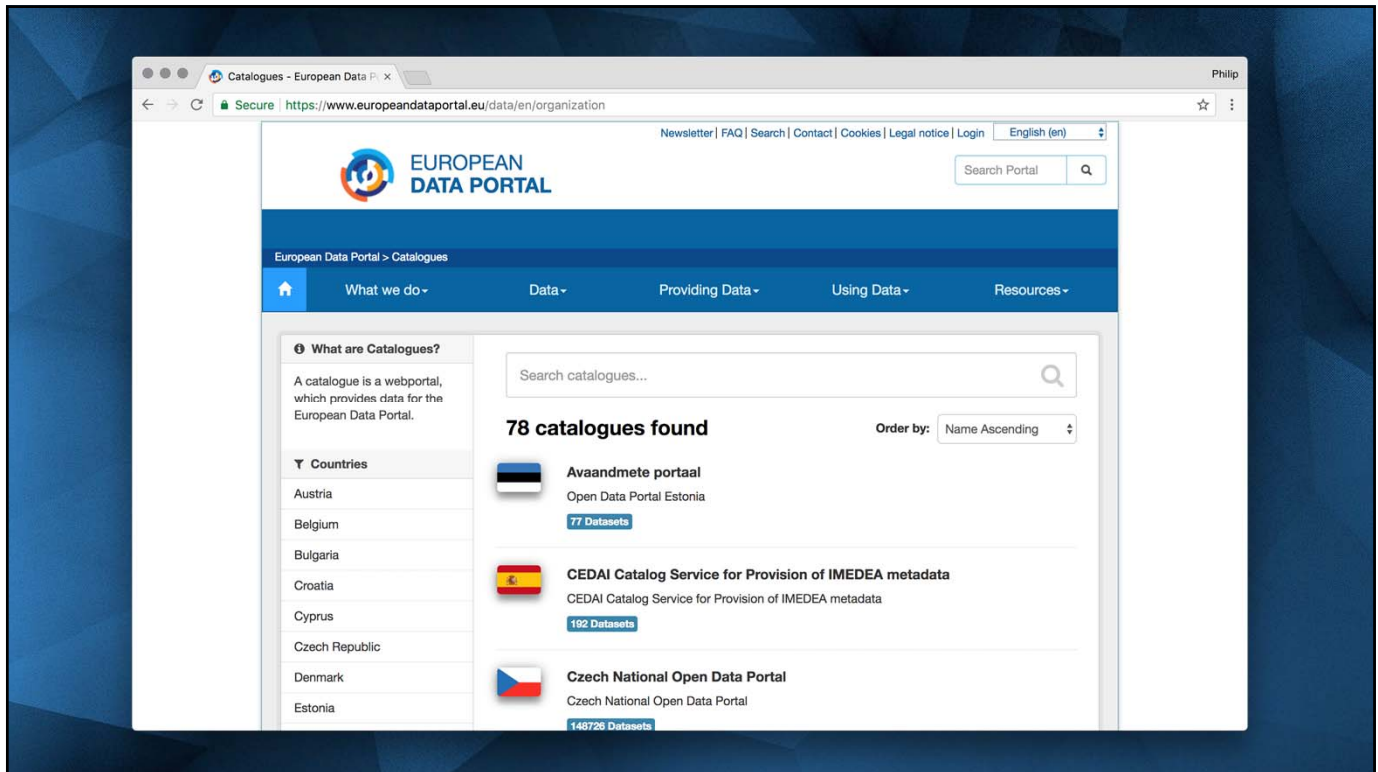
- 1953    Circular A-16  
          Coordination of Geographic Information and Related Spatial Data Activities
- 1967    FOIA  
          Freedom of Information Act
- 2002    E-Government Act
- 2009    Open Government Directive
- 2013    Memorandum M 13-13  
          Open Data Policy - Managing Information as an Asset
- 2018    President's Management Agenda – Leveraging Data as a Strategic Asset







Open Data Federation in Europe



# Open Data Principles

8 Principles of Open Government x Philip

https://public.resource.org/8\_principles.html [To The Wiki >>]

## Request for Comments

December 7-8, 2007—This weekend, [30 open government advocates](#) gathered to develop a set of principles of open government data. The meeting, held in Sebastopol, California, was designed to develop a more robust understanding of why open government data is essential to democracy.

The Internet is the public space of the modern world, and through it governments now have the opportunity to better understand the needs of their citizens and citizens may participate more fully in their government. Information becomes more valuable as it is shared, less valuable as it is hoarded. Open data promotes increased civil discourse, improved public welfare, and a more efficient use of public resources.

The group is offering a set of fundamental principles for open government data. By embracing the eight principles, governments of the world can become more effective, transparent, and relevant to our lives.

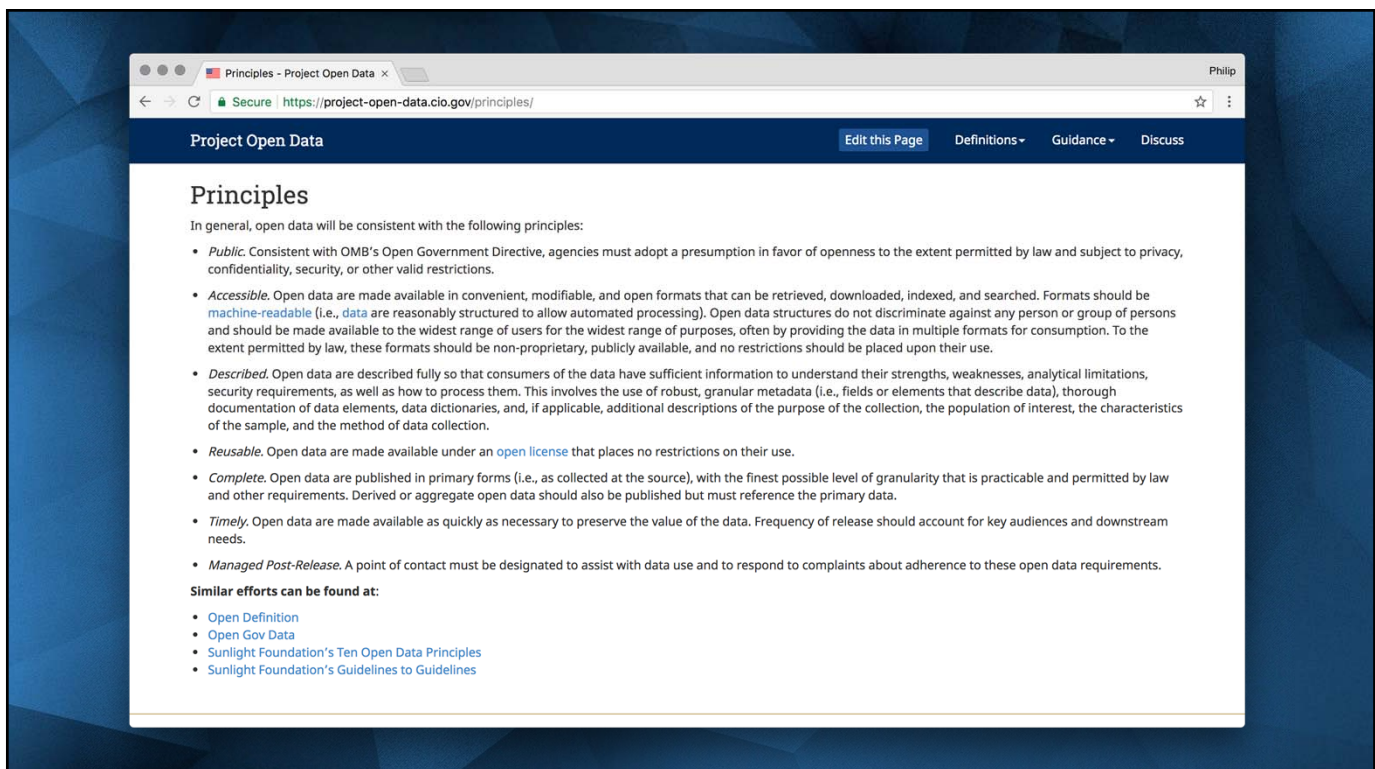
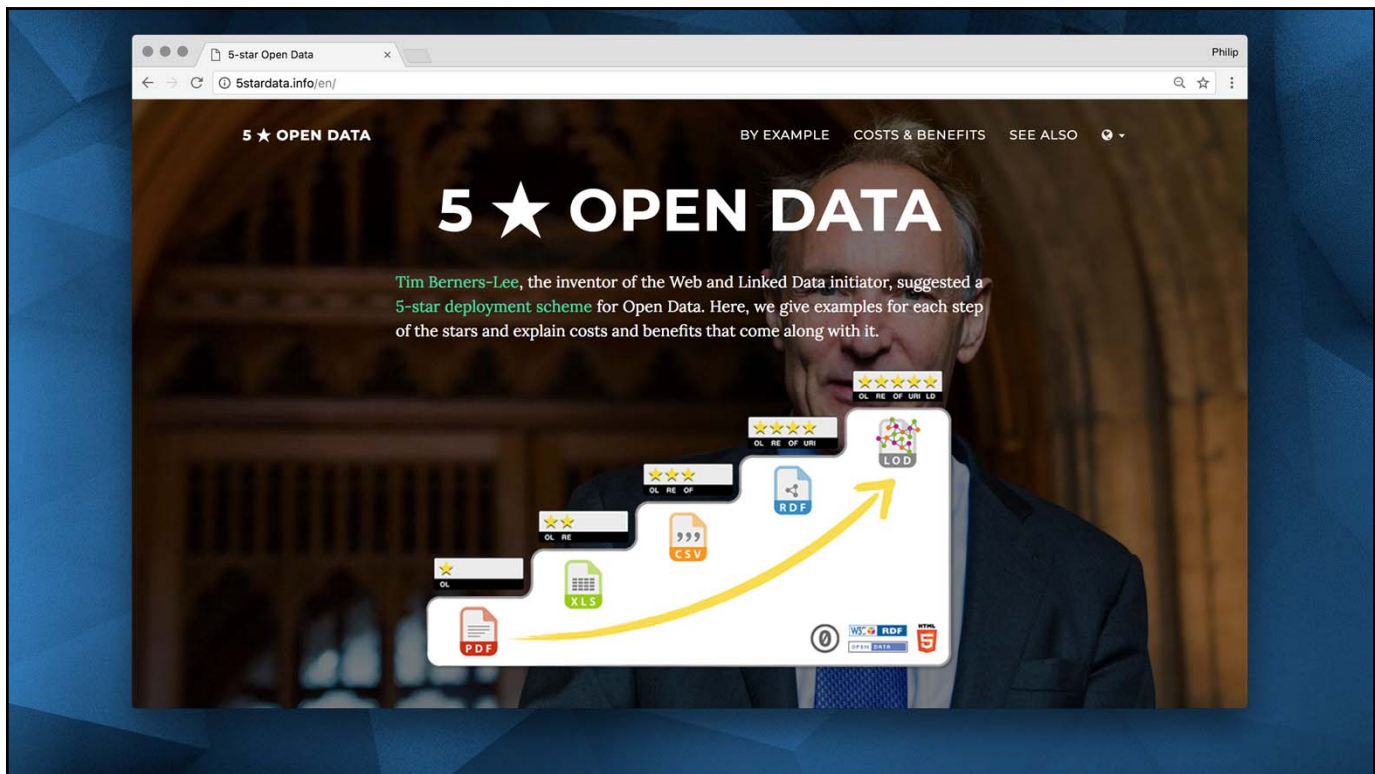
[Your comments are welcome!](#)

## Open Government Data Principles

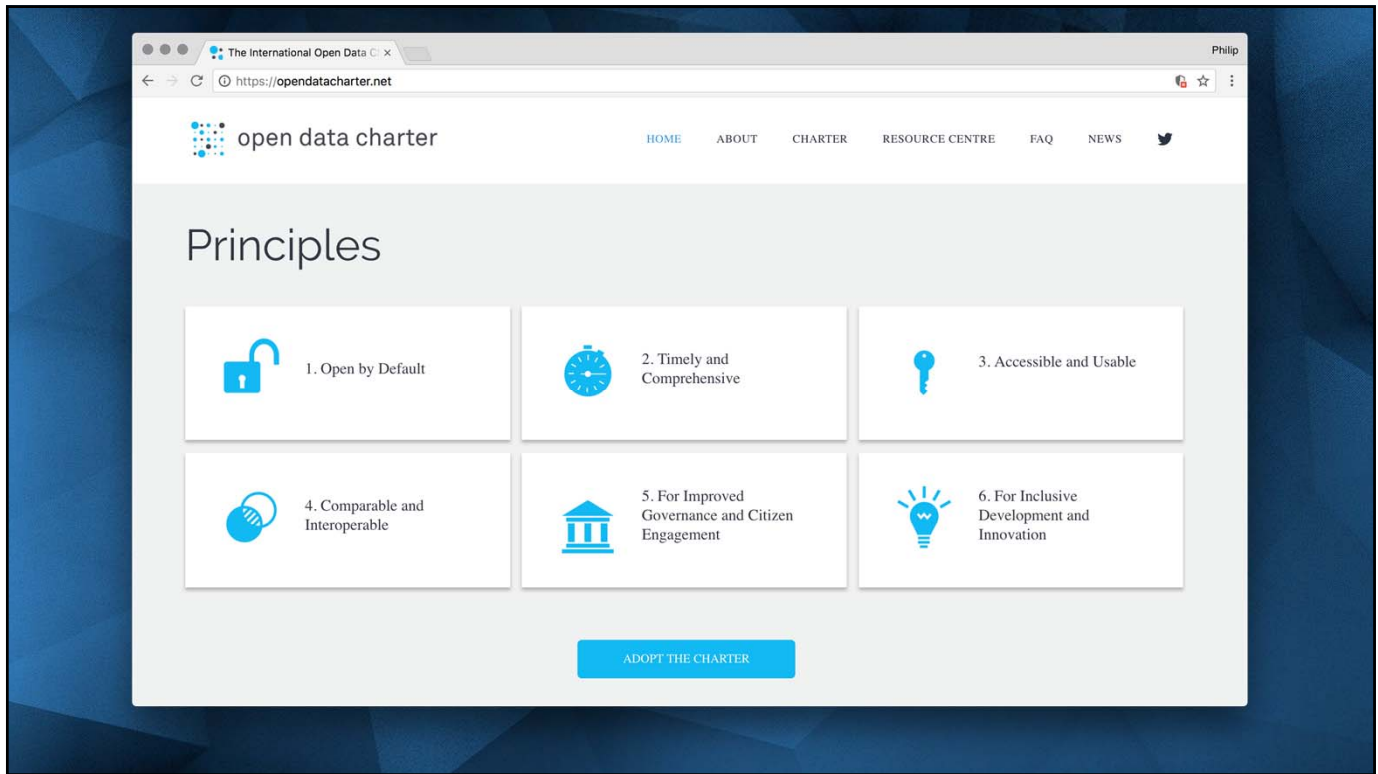
Government data shall be considered open if it is made public in a way that complies with the principles below:

1. [Complete](#)  
All public data is made available. *Public data* is data that is not subject to valid privacy, security or privilege limitations.
2. [Primary](#)  
Data is as collected at the source, with the highest possible level of granularity, not in aggregate or modified forms.
3. [Timely](#)  
Data is made available as quickly as necessary to preserve the value of the data.
4. [Accessible](#)  
Data is available to the widest range of users for the widest range of purposes.
5. [Machine processable](#)  
Data is reasonably structured to allow automated processing.
6. [Non-discriminatory](#)  
Data is available to anyone, with no requirement of registration.
7. [Non-proprietary](#)  
Data is available in a format over which no entity has exclusive control.
8. [License-free](#)  
Data is not subject to any copyright, patent, trademark or trade secret regulation. Reasonable privacy, security and privilege restrictions may be allowed.

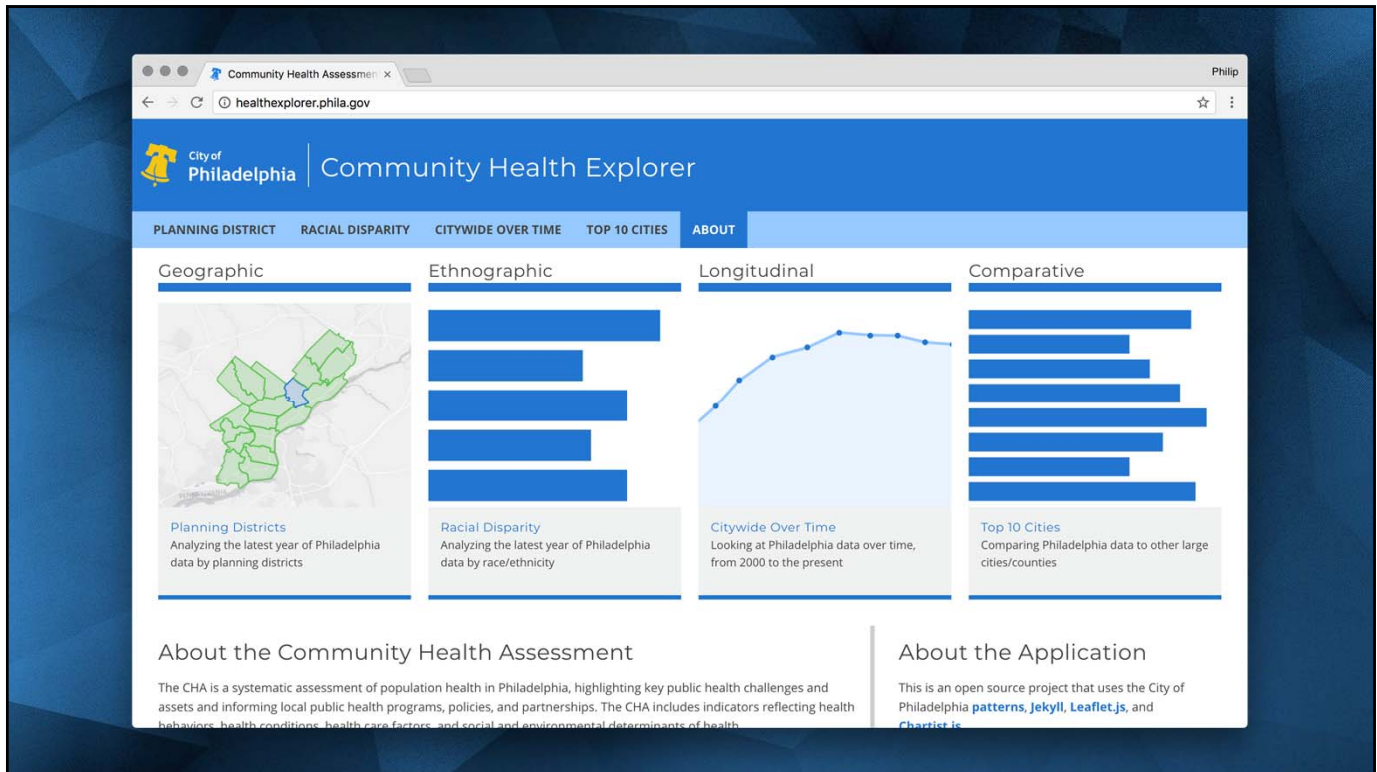








U.S. National Reporting Platform

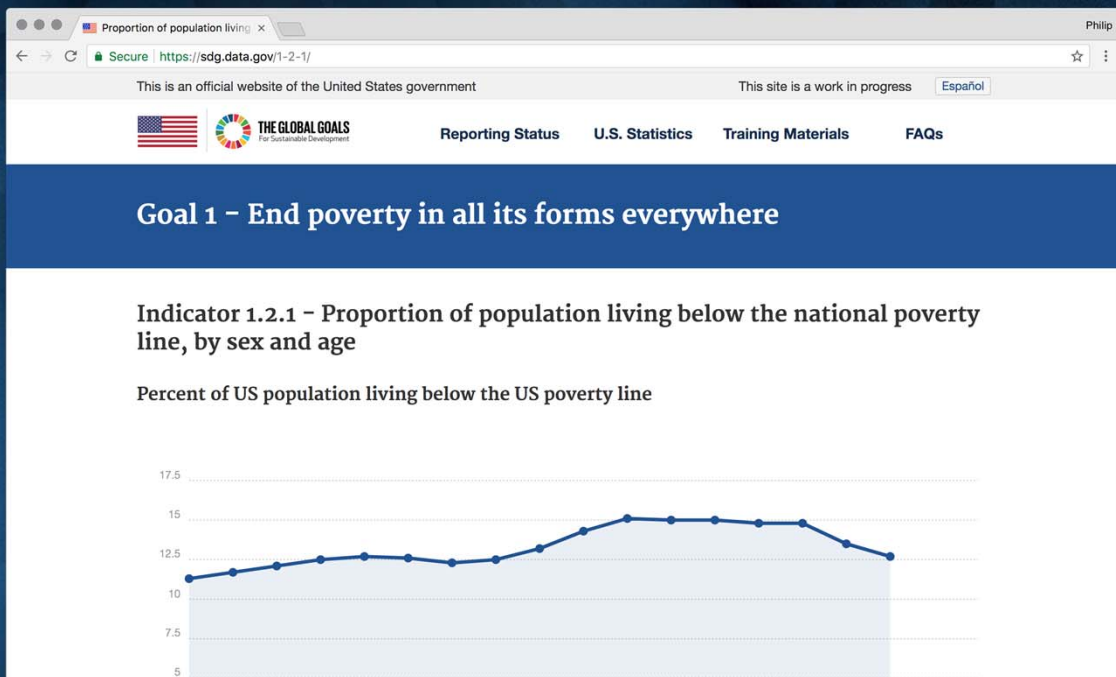


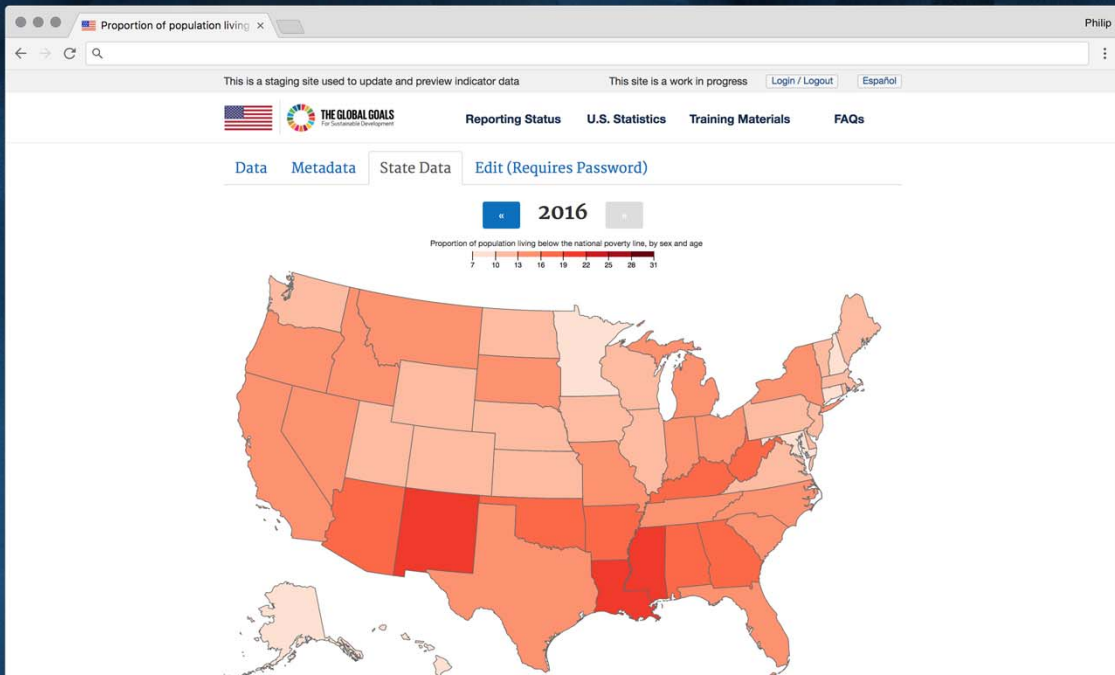
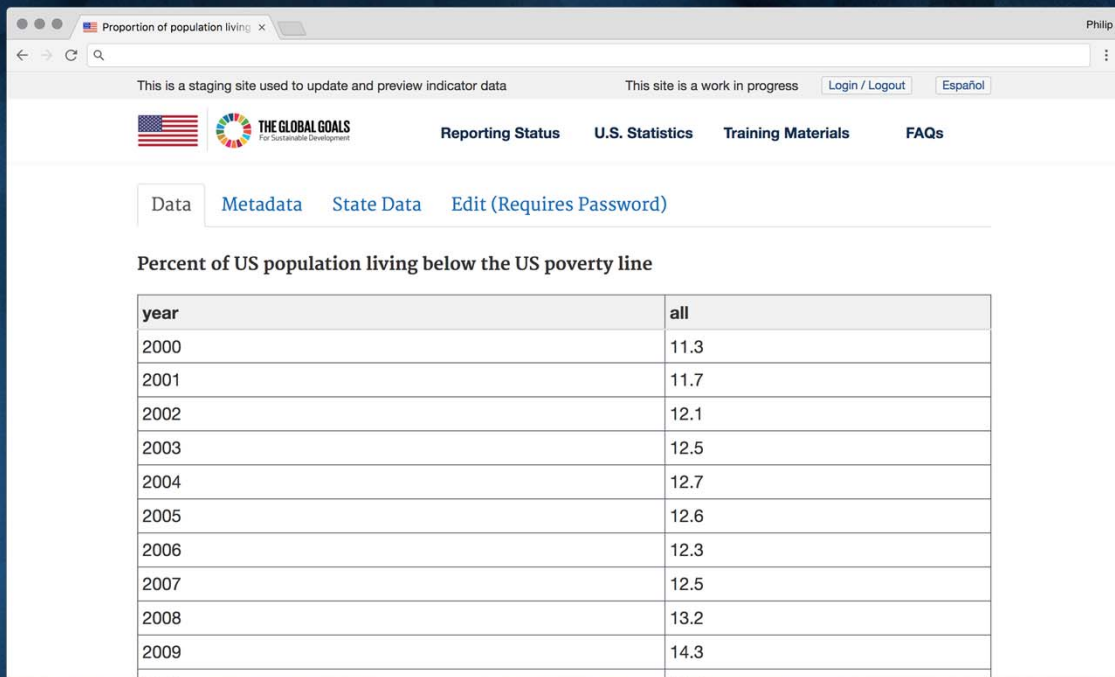
Prose





# CSV + YAML







Editing data/indicator\_1-2-1.csv x Philip

prose.io/#GSA/sdg-indicators/edit/gh-pages/data/indicator\_1-2-1.csv

GSA / sdg-indicators  
**data/indicator\_1-2-1.csv**

	A	B	C	D	E	F	G
1	year	tot_proportion_belownatpov_line	male	female	under_18_years	18_64_years	65andover_years
2	2000	11.3	9.9	12.6	16.2	9.6	9.9
3	2001	11.7	10.4	12.9	16.3	10.1	10.1
4	2002	12.1	10.9	13.3	16.7	10.6	10.4
5	2003	12.5	11.2	13.7	17.6	10.8	10.2
6	2004	12.7	11.5	13.9	17.8	11.3	9.8
7	2005	12.6	11.1	14.1	17.6	11.1	10.1
8	2006	12.3	11.0	13.6	17.4	10.8	9.4
9	2007	12.5	11.1	13.8	18.0	10.9	9.7
10	2008	13.2	12.0	14.4	19.0	11.7	9.7
11	2009	14.3	13.0	15.6	20.7	12.9	8.9
12	2010	15.1	14.0	16.3	22.0	13.8	8.9
13	2011	15.0	13.6	16.3	21.9	13.7	8.7
14	2012	15.0	13.6	16.3	21.8	13.7	9.1
15	2013	14.8	13.2	16.3	21.5	13.3	10.2
16	2014	14.8	13.4	16.1	21.1	13.5	10.0
17	2015	13.5	12.2	14.8	19.7	12.4	8.8
18	2016	12.7	11.3	14.0	18.0	11.6	9.3
19	2017						

Editing \_indicators/1-2-1.md/1 x Philip

prose.io/#GSA/sdg-indicators/edit/gh-pages/\_indicators/1-2-1.md

GSA / sdg-indicators  
**Proportion of population living below the national poverty line**

**SDG Indicator Name**

Proportion of population living below the national poverty line, by sex and age

**SDG Target Addressed**

By 2030, reduce at least by half the proportion of men, women and children of all ages living in poverty

**Definition of SDG Indicator**

This indicator provides the proportion of the total population and the proportion of the employed population living in households with per-capita consumption or income that is below the national poverty line.

**Method of computation for global SDG indicator**

Calculated by dividing the number of persons living in households below the poverty line (disaggregated by sex, age and employment status) by the total number of persons (disaggregated by the same sex, age and employment status groups).

UN Designated Tier

## Open Data Principles Applied to NRP

- Transparency around data availability
- Managing data in the form and format that users want to consume it. Machine readable, non-proprietary
- Managing data in public in real time; open by default
- Data provenance
- Radical transparency around data publishing process

## Version History



This screenshot shows a GitHub pull request titled "Update indicator\_8-8-1.csv #856" for the repository "GSA / sdg-indicators". The pull request is open, showing a diff for the file "data/indicator\_8-8-1.csv". The diff shows changes to the file, with a summary of changes: "12 files changed, 6 additions, 6 deletions". The diff view shows the following changes:

Line	Change	Content
5	+	2003,,,
6	+	2004,,,
7	+	2005,,,
8	-	-2006,,,
9	-	-2007,,,
10	-	-2008,,,
11	-	-2009,,,
12	-	-2010,,,
8	+	+2006,6.7,0.7,,
9	+	+2007,6.4,0.7,,
10	+	+2008,6.1,0.6,,
11	+	+2009,5.7,0.6,129.3,102.2
12	+	+2010,5.8,0.6,133.6,105.7

This screenshot shows the commit history for the file "data / indicator\_8-8-1.csv" in the repository "raichoudhary-r / sdg-indicators". The history shows the following commits:

Commit Date	Commit Message	Commit Hash
Dec 20, 2017	Update indicator_8-8-1.csv	ae103d0
Oct 20, 2017	Update indicator_8-8-1.csv	b7657a1
Dec 29, 2016	Updated indicator_8-8-1.csv	1abcba4
Dec 16, 2016	Updated indicator_8-8-1.csv	759e47b
Dec 16, 2016	Updated indicator_8-8-1.csv	ef53f58

## Future Work

### Future Work

- Data validation
- More complex data sources: disaggregated, geospatial, API driven
- Standards and interoperability
- More integrated with open data processes