



An
Phríomh-Oifig
Staidrimh

Central
Statistics
Office

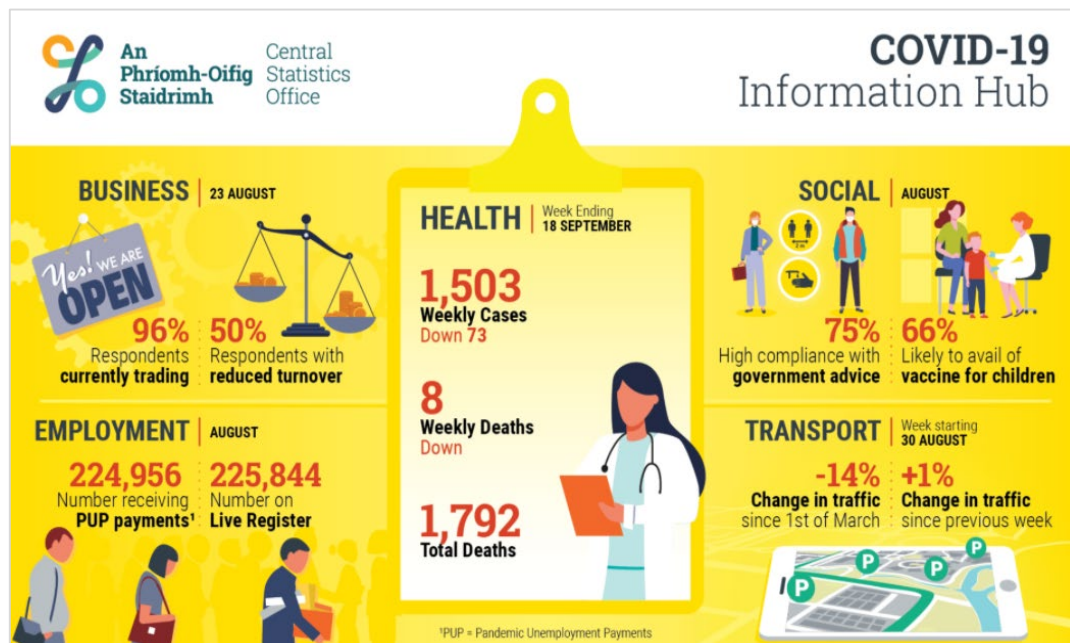
Covid-19 and the CSO, Ireland

UNECE virtual meeting October 2020

Doireann O'Brien

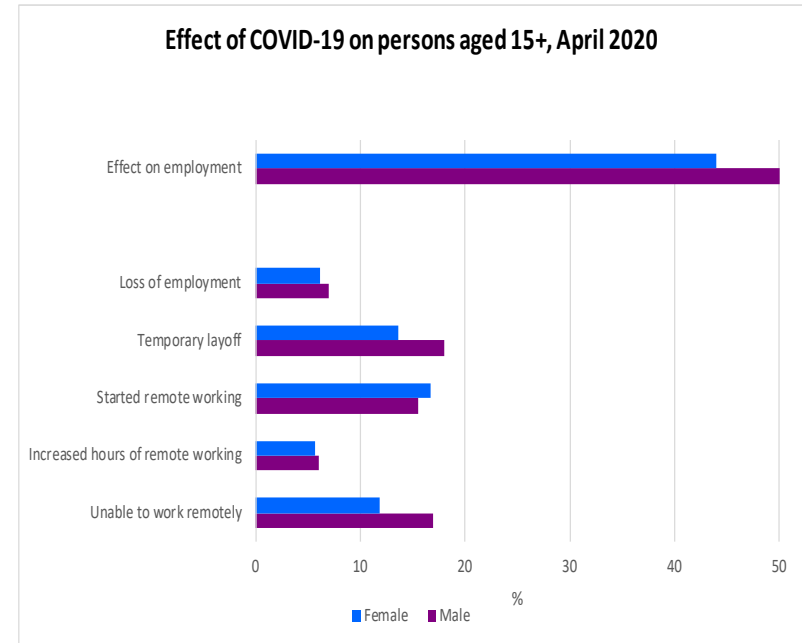
CSO response to Covid-19

- Covid-19 related questions added to the Labour Force Survey (LFS)
- New surveys created, including: “Social impact of Covid-19 on Women and Men”
- For more information, see the CSO Covid-19 Information hub



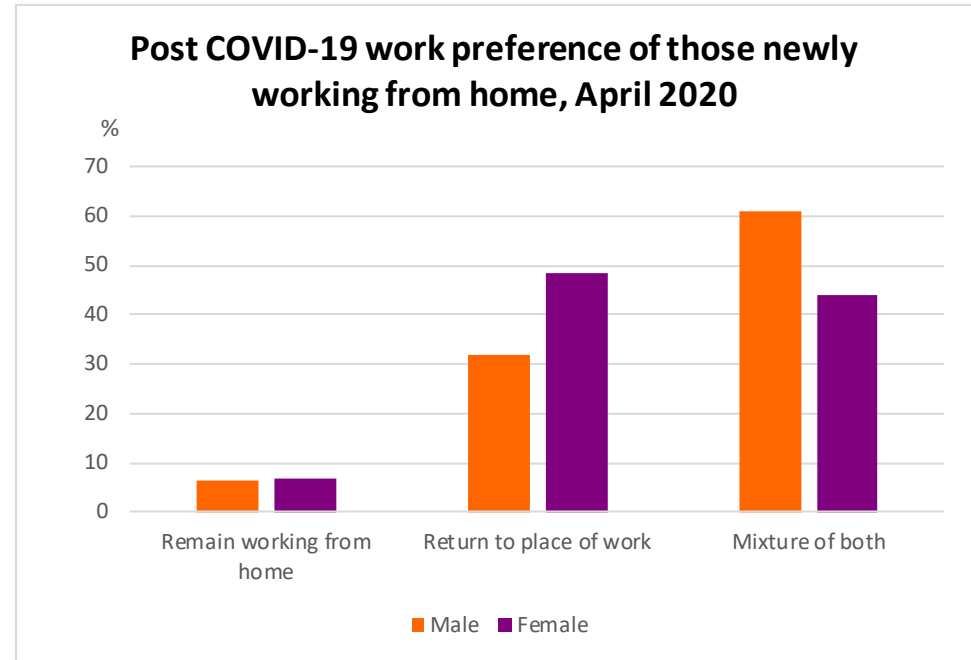
Employment and life effects of Covid-19 in the LFS, April 2020

- Covid-19 had an effect on the employment of 50% of males and 44% of females
- Men more likely to have lost employment or be temporarily laid off
- Women slightly more likely to have started remote working
- More men unable to work remotely than women



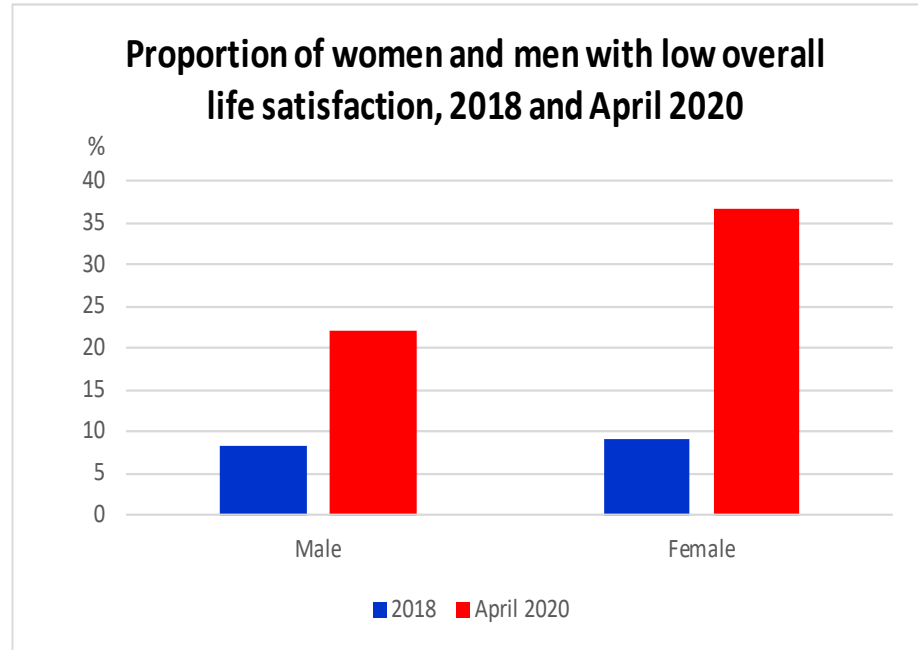
Social impact of Covid-19 on Women and Men, April 2020

- Of those who are newly working from home:
 - Nearly 50% of women would like to return to place of work
 - Compared to just 32% of men



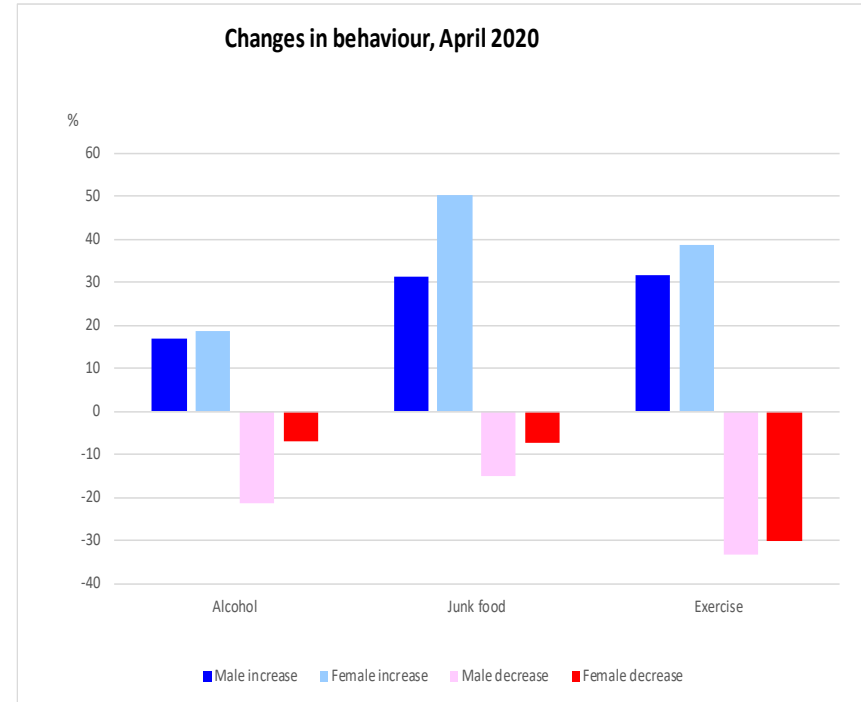
Social impact of Covid-19 on Women and Men, April 2020

- Less than 10% of men and women with low overall life satisfaction in 2018
- However, 37% of women had low overall life satisfaction compared with 22% of men in April 2020



Social impact of Covid-19 on Women and Men, April 2020

- Women far more likely to increase consumption of junk food
- Women a little more likely to increase alcohol consumption
- Women far less likely to decrease consumption of alcohol
- Women a little more likely to increase frequency of exercise



Thank you for listening!

For more information see our [Covid-19 Information Hub](https://www.cso.ie/covid19).

