



# Gender equality – improvements made but still a work in progress

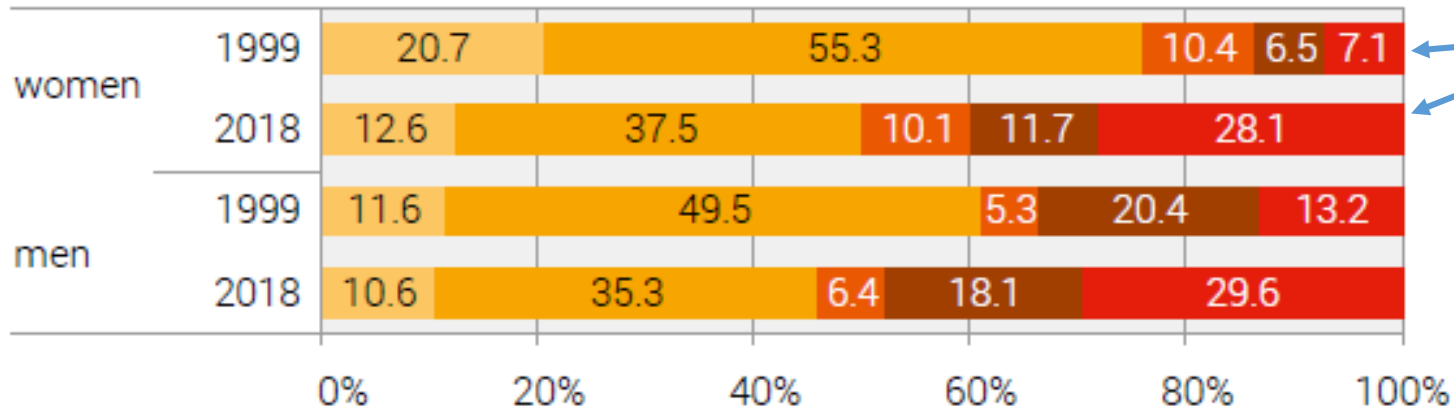


On the way to gender equality  
Current situation and developments



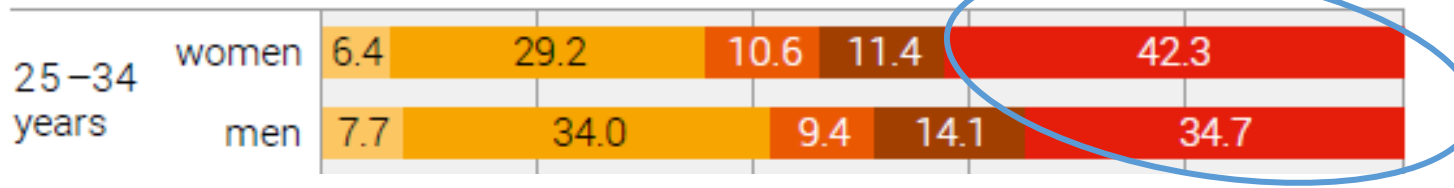
# Educational attainment of the permanent resident population

## Persons aged 25 to 64



4 x

## 2018, by age

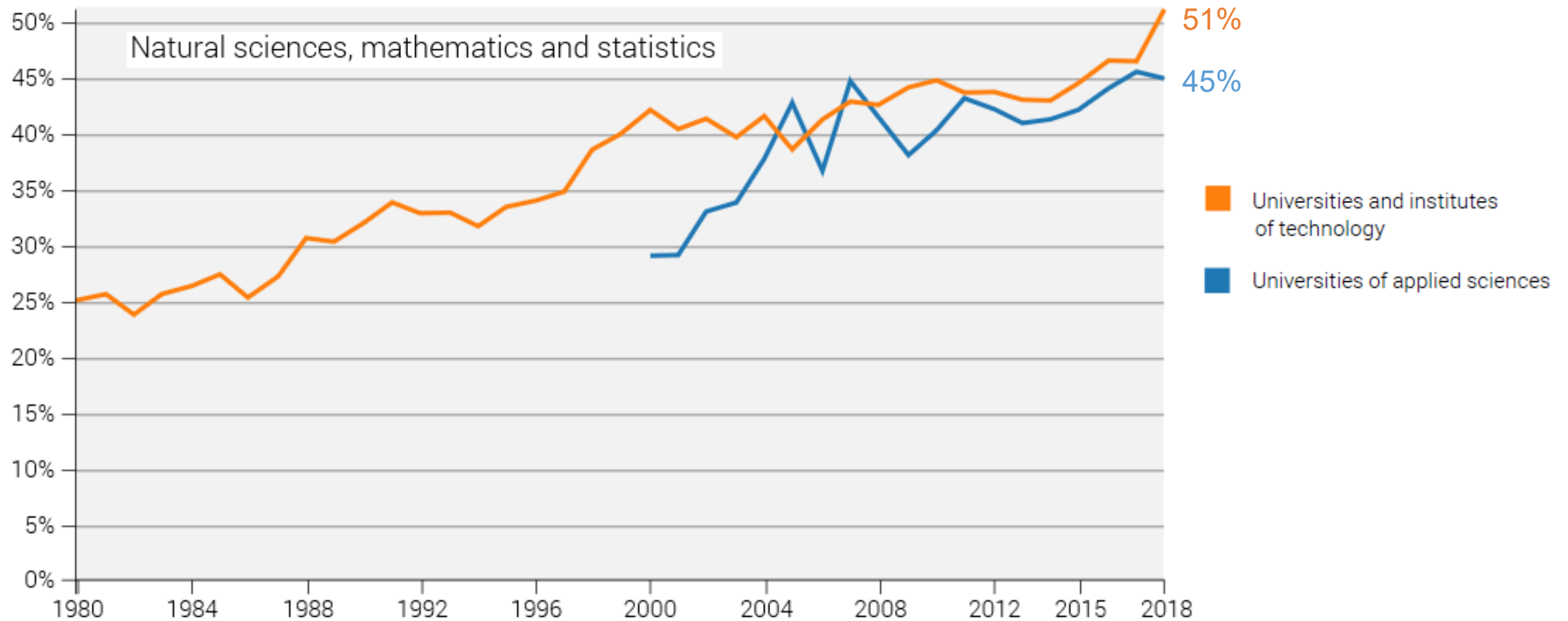


Source: FSO – SLFS

© FSO 2019



## Share of women among the entries in selected ISCED fields of education



Source: FSO – Statistics on pupils and students (SDL), Swiss higher education information system

© FSO 2019



## Career and study choices, 1990 and 2016

Proportion of women in %

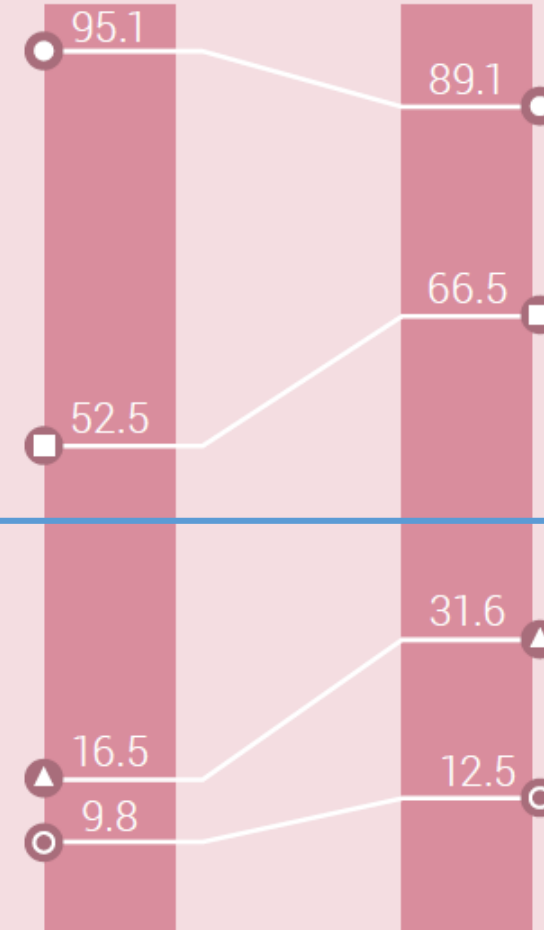
Health and social services

- upper secondary level
- ◻ universities and institutes of technology

Engineering, manufacturing and construction

- ◉ upper secondary level
- ▲ universities and institutes of technology

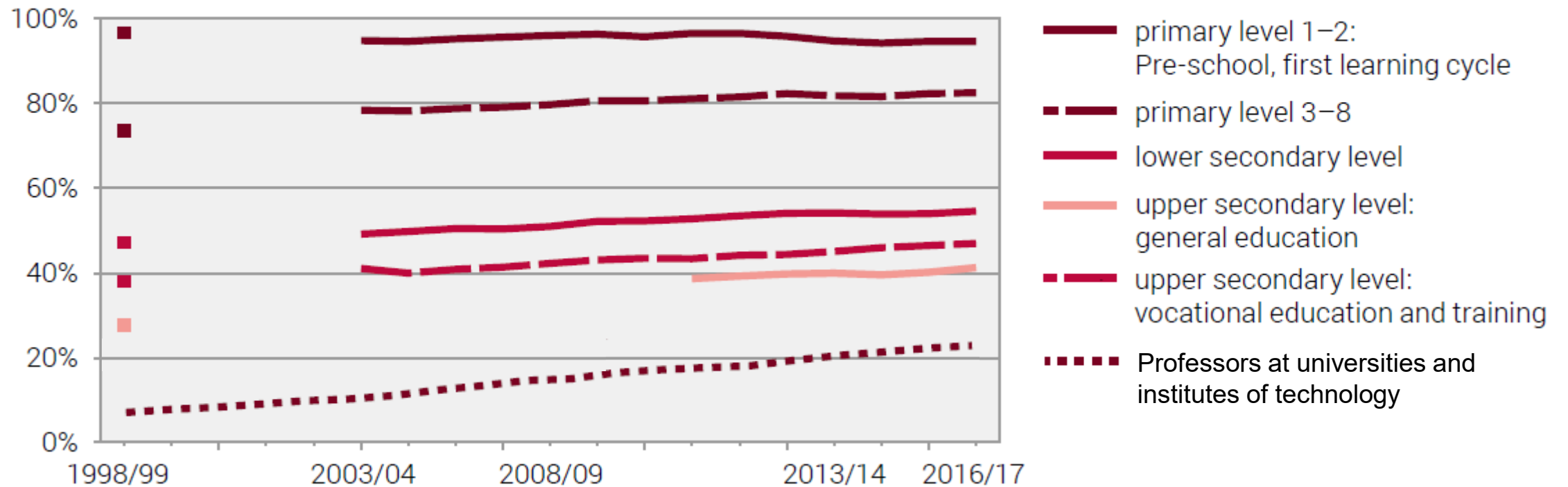
1990 2016



Source: FSO – SDL, SIUS



## Proportion of female teachers by education level (public education)



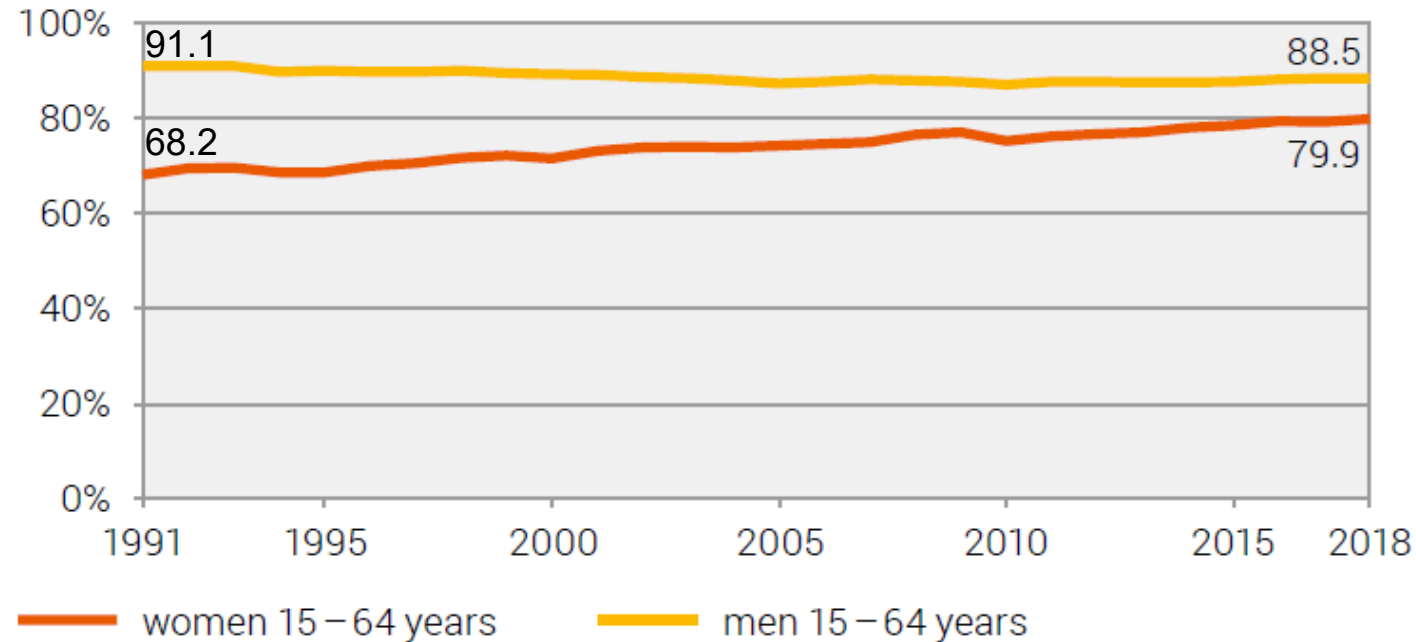
1999/2000 – 2002/03: break in statistics

Sources: FSO – SSP, SHIS-PERS

© FSO 2019



## Economic activity rate



Economic activity rate: persons in employment and ILO unemployed as a percentage of the reference population  
1991–2009: average of the second quarter / from 2010: annual average

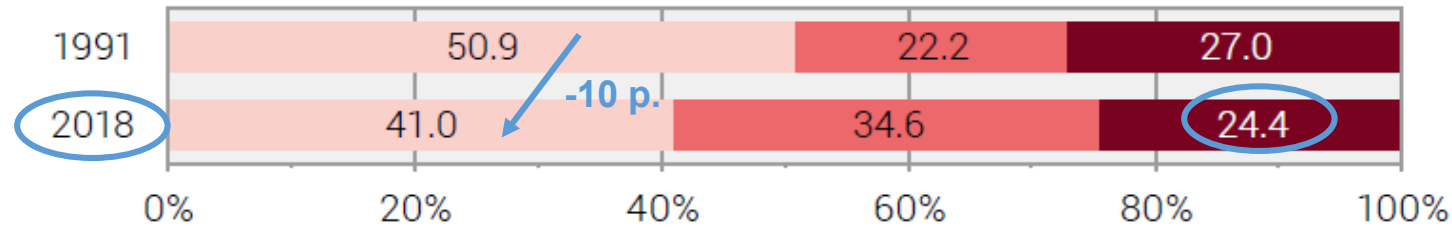
Source: FSO – SLFS

© FSO 2019

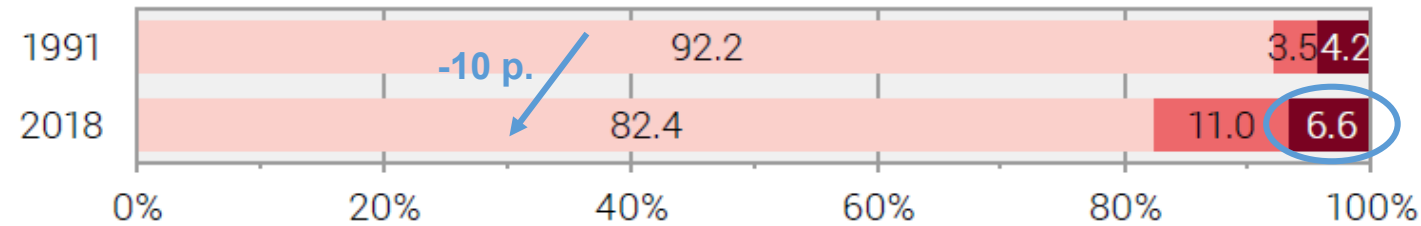


## Full/part-time employed

### Women



### Men



full-time (90–100%)
  part-time 50–89%
  part-time < 50%

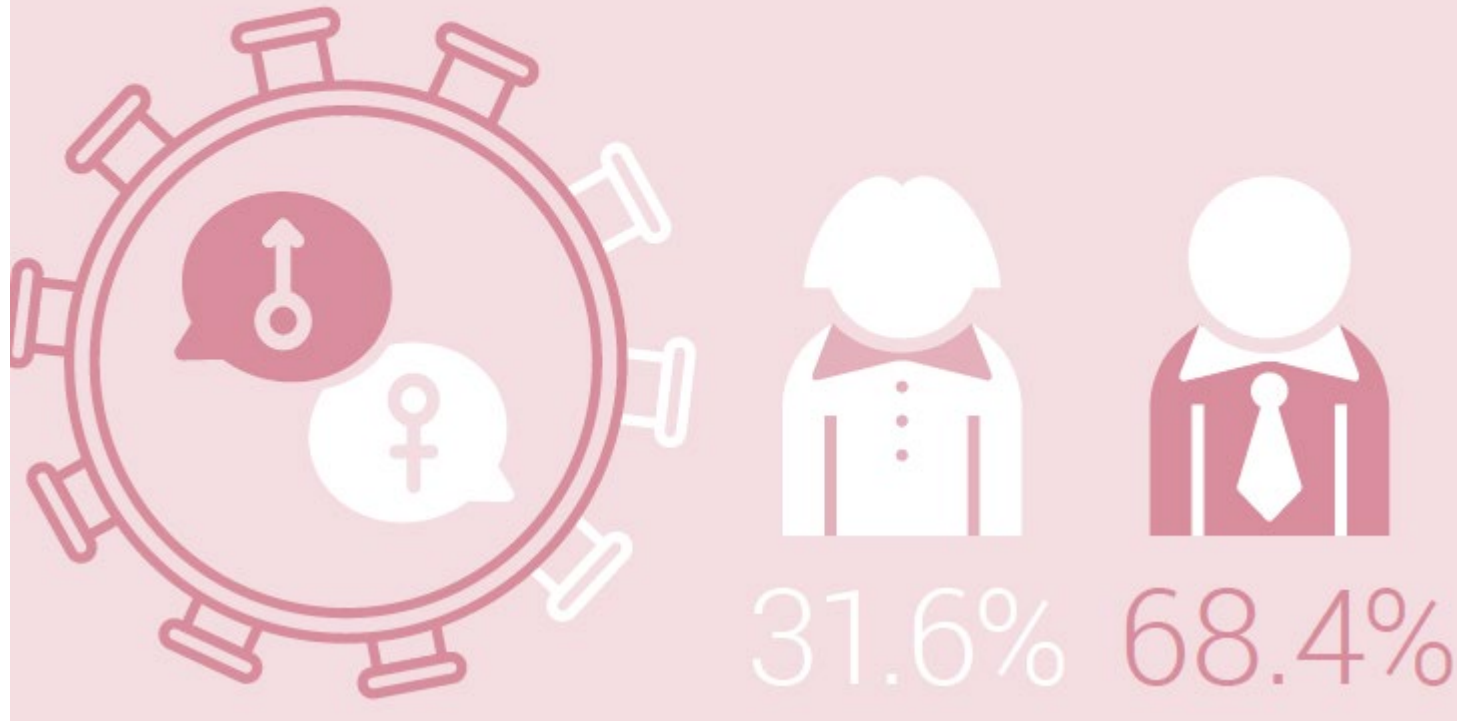
1991–2009: average of the second quarter / from 2010: annual average

Source: FSO – SLFS

© FSO 2019



## Employees of a company who are members of the board of directors, 2018

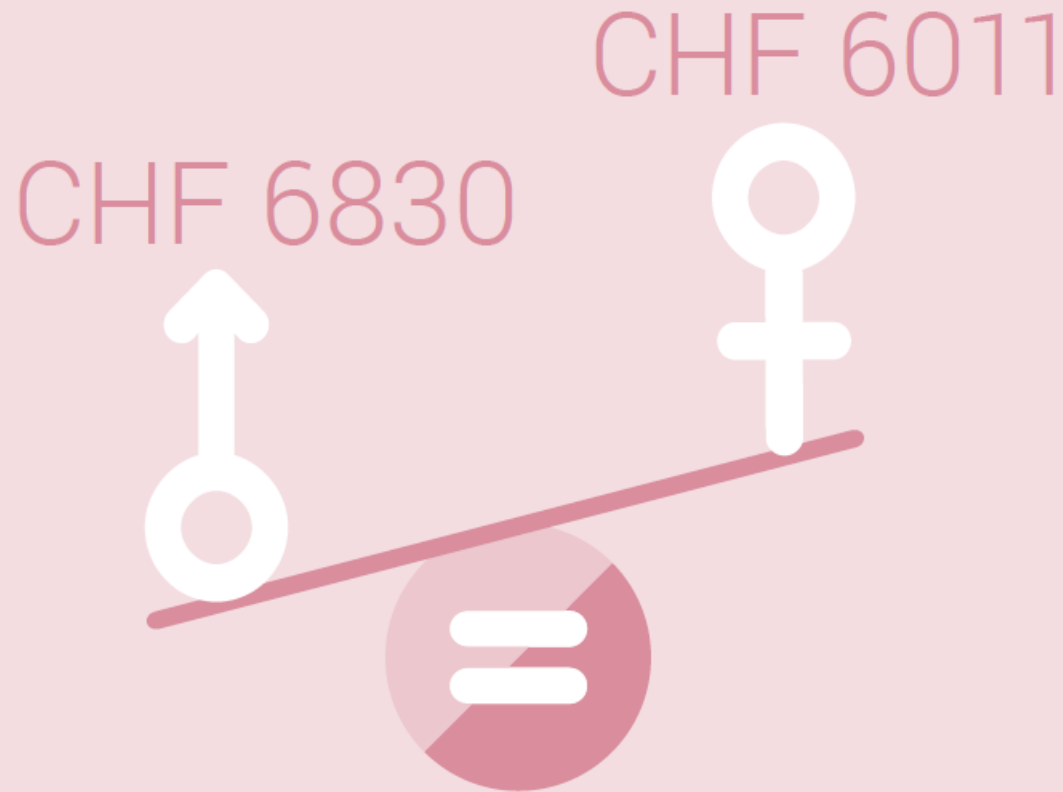


Source: FSO – SLFS





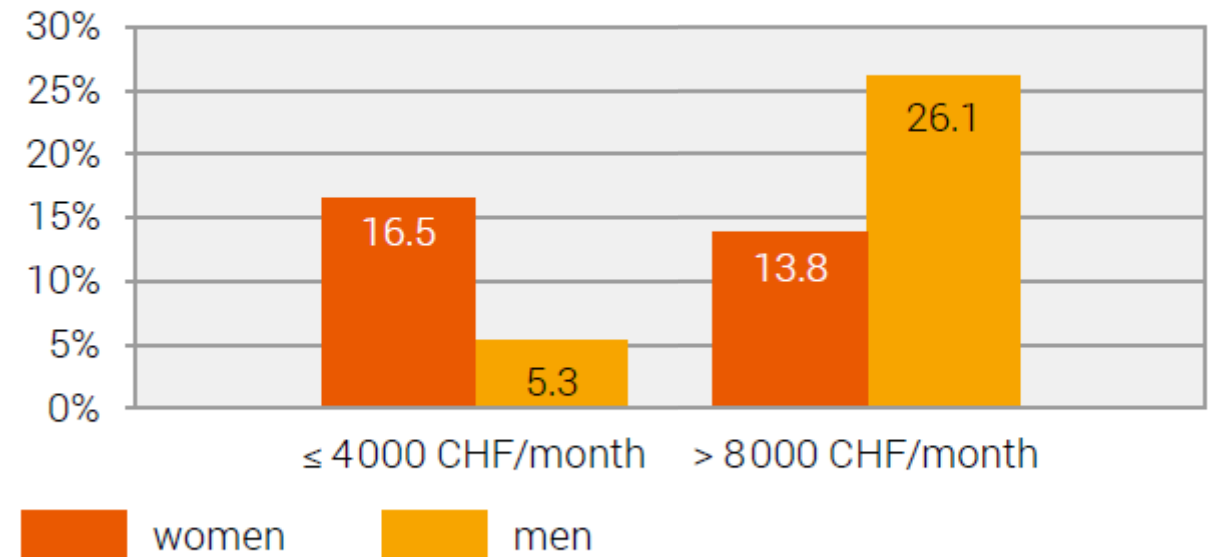
## Gross monthly wage, 2016 (median, total economy)



Source: FSO – ESS

## Full-time employees with a modest or high net wage, 2016

Private and public sectors combined



Source: FSO – SESS

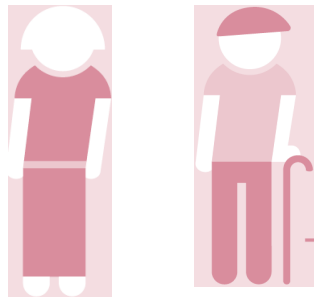
© FSO 2019



## Share of beneficiaries from the occupational pension plan (2nd pillar), 2015

Pensioners up to 5 years after official retirement age

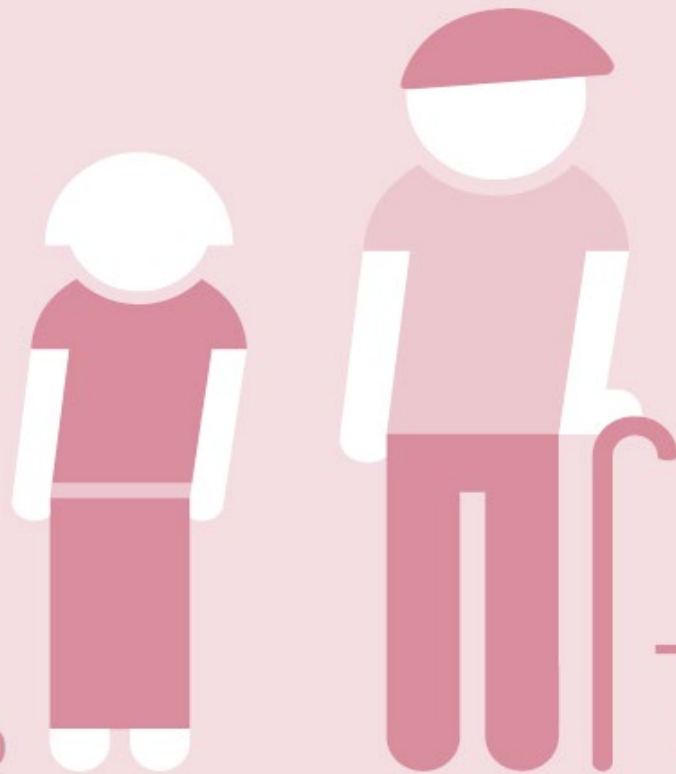
1st pillar



98.8%

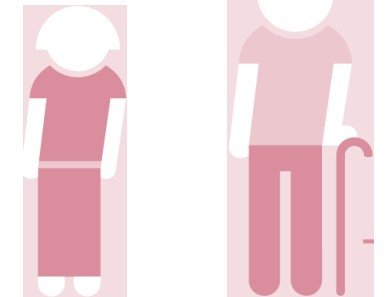
98.0%

63.7%



78.6%

3rd pillar



28.3%

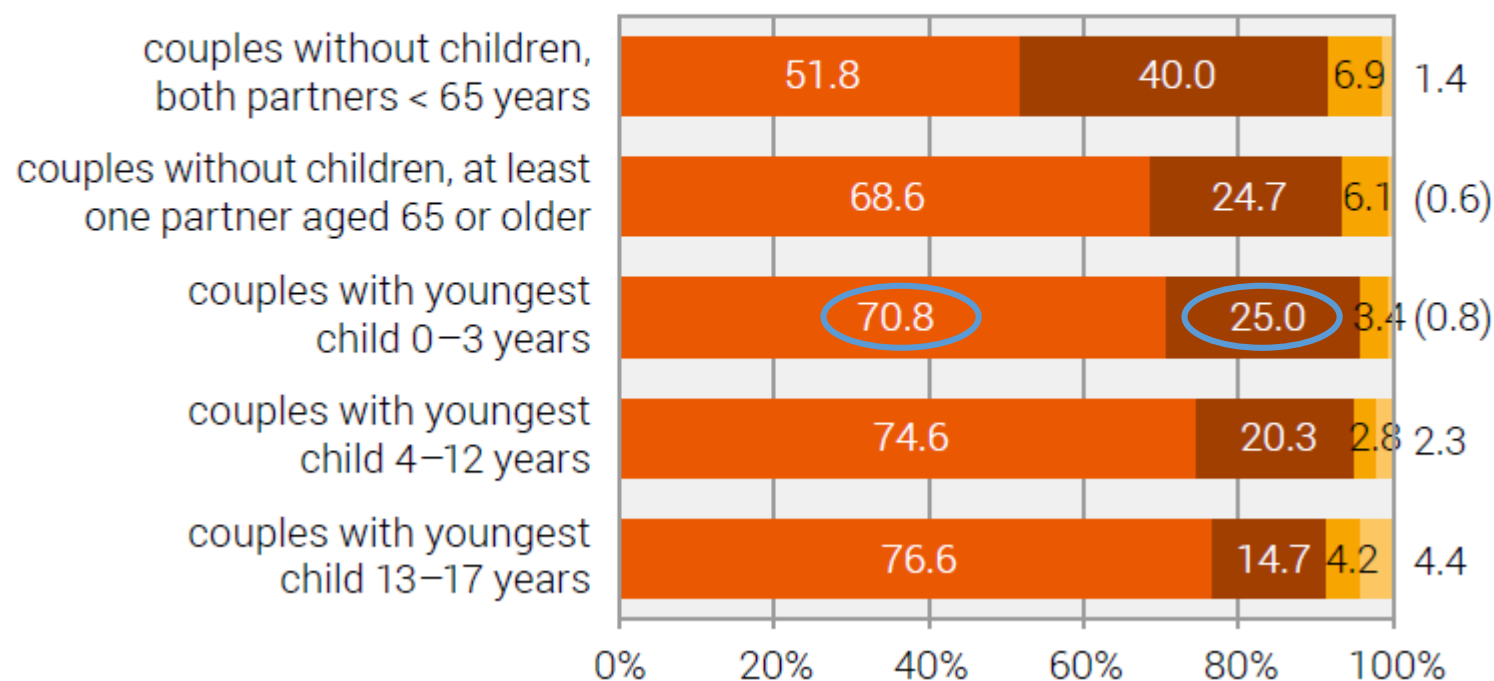
42.1%

Source: FSO – SLFS, SESAM



## Sharing of domestic work in couple households, 2013

Both partners aged 15–80



Domestic work mainly carried out by:



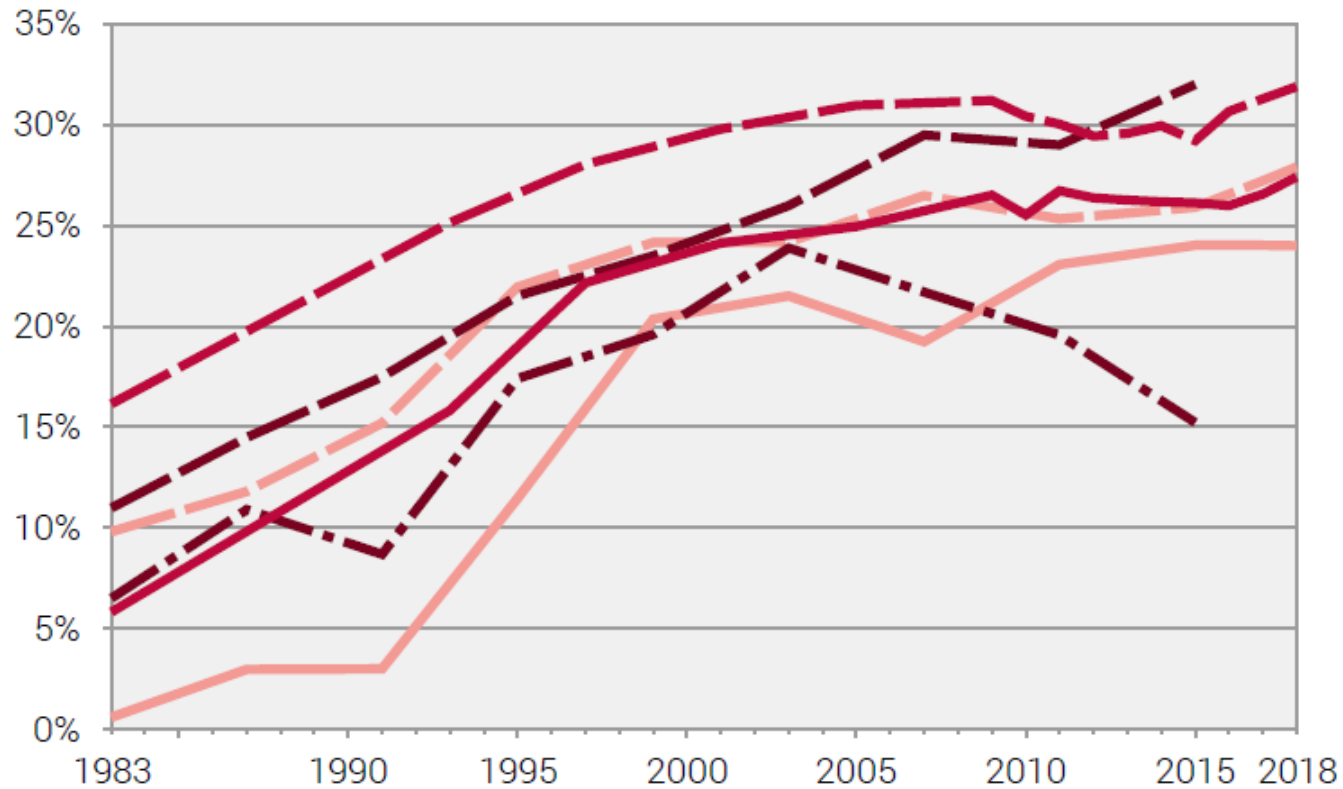
(Figure): extrapolation based on fewer than 30 observations. Results should be interpreted with great caution.

Source: FSO – FGS

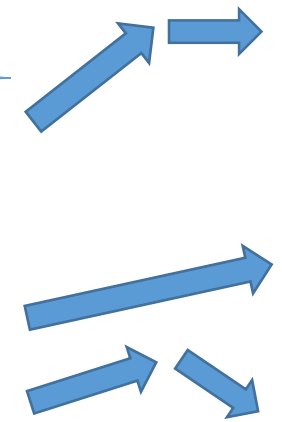
© FSO 2019



## Development of the share of women in political institutions



- Governments of the cities
- - Parliaments of the cities
- Cantonal governments
- - Cantonal parliaments
- National Council
- - Council of States



Source: FSO – Election Statistics

© FSO 2019



[www.statistics.admin.ch](http://www.statistics.admin.ch)