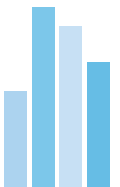


The Danish CPI with scanner data- a switch for the COICOP group 1 and 2



The use of unit prices

- In general unit prices are applicable in the CPI and give an insight into actual consumption
- But:
 - Data should be monitored for flaws in the different variables and between months



Scanner data

Timeline:

2010-2012:

- It is decided to investigate the possibility of implementing SD in the Danish CPI
- Contact to the chains is taken
- Programs to the validation of data and chaining to COICOP is developed

2013:

- The development of a system for the automatic update of the basket is initiated
- The development of a system for integration of SD with regular prices is initiated

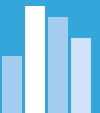
2014-15:

- The system for the automatic update of the basket is finished
- The system for integration of SD with regular prices is finished
- A backdata-calculation of the CPI with scanner data is done for the years 2011-2015
- It is checked whether it's possible to calculate other indices types (netpriceindex,HICP,HICP-CT)
- The switch to ECOICOP is done

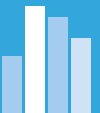
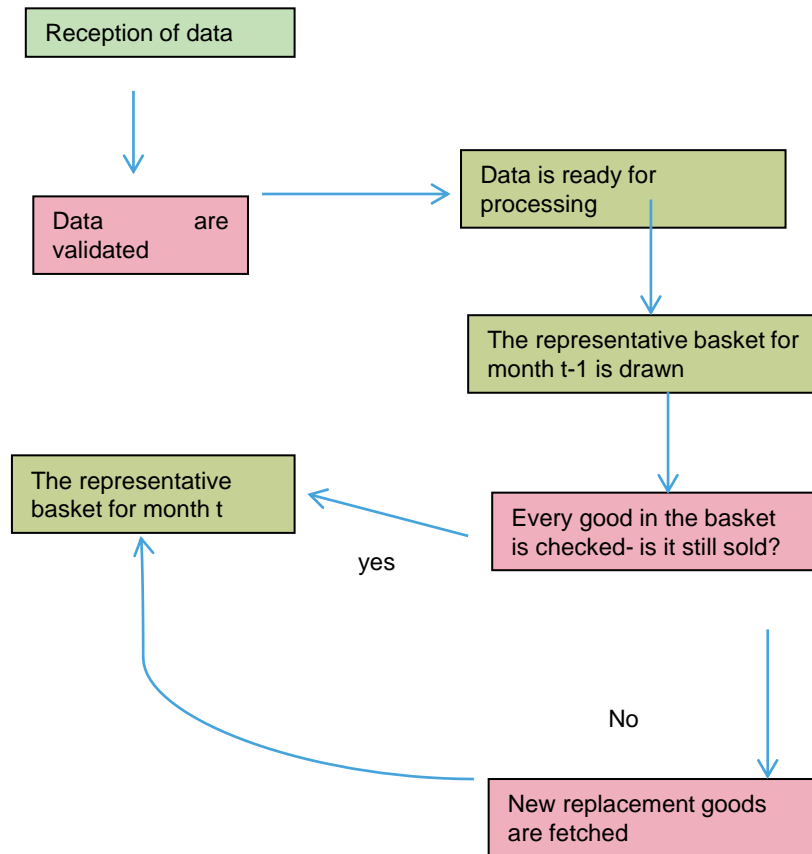


IT: Reception and linking to ECOICOP

- First step: simple checksystems (missing records, proper dates)
- Second step: Scanner data is linked to the ECOICOP-classification based on the supermarkets classification and a search-word-process
- Third step: Wrongfully placed barcodes (with a large turnover) are moved to the right ECOICOP-group

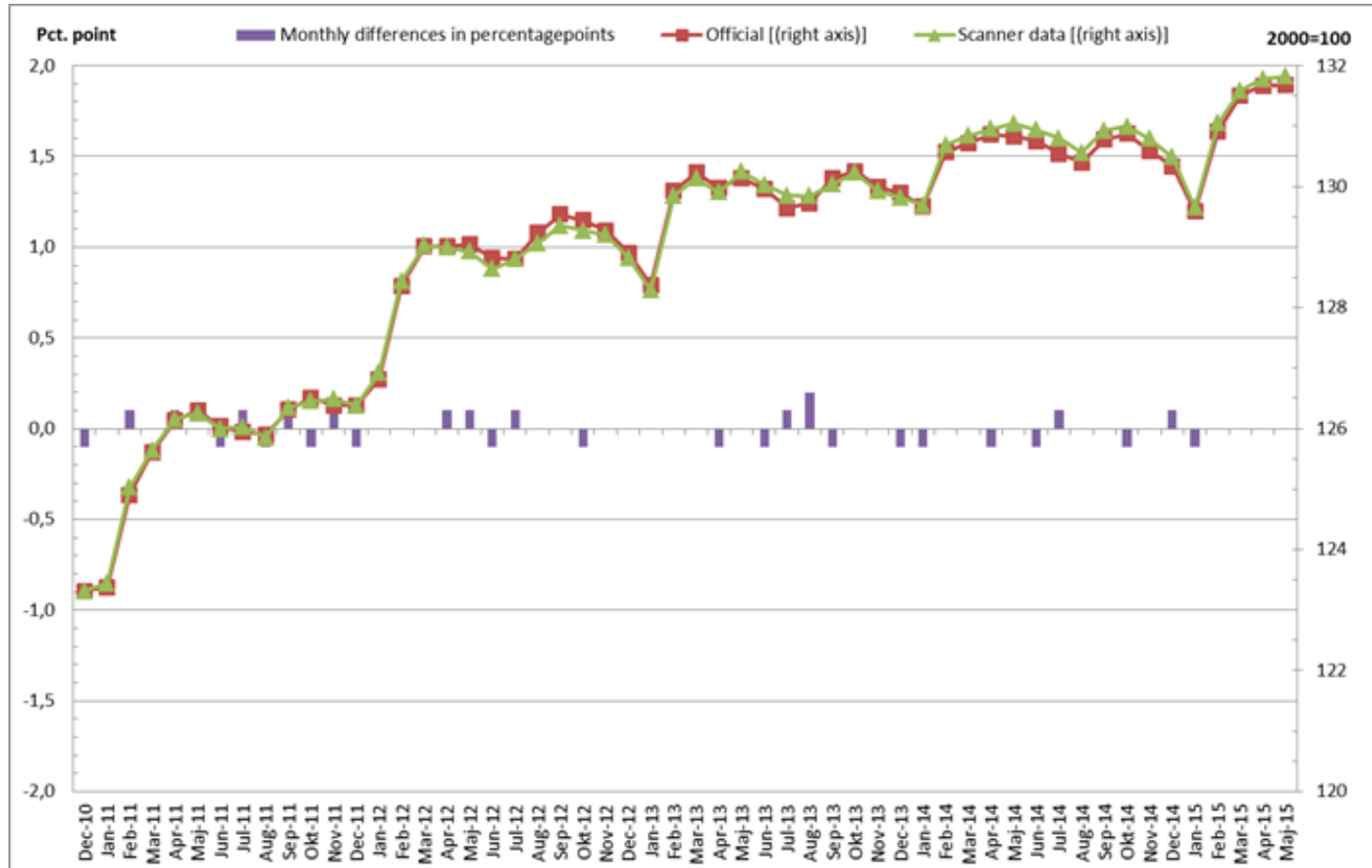


IT: selection of basket



Scanner data, results

Total CPI:



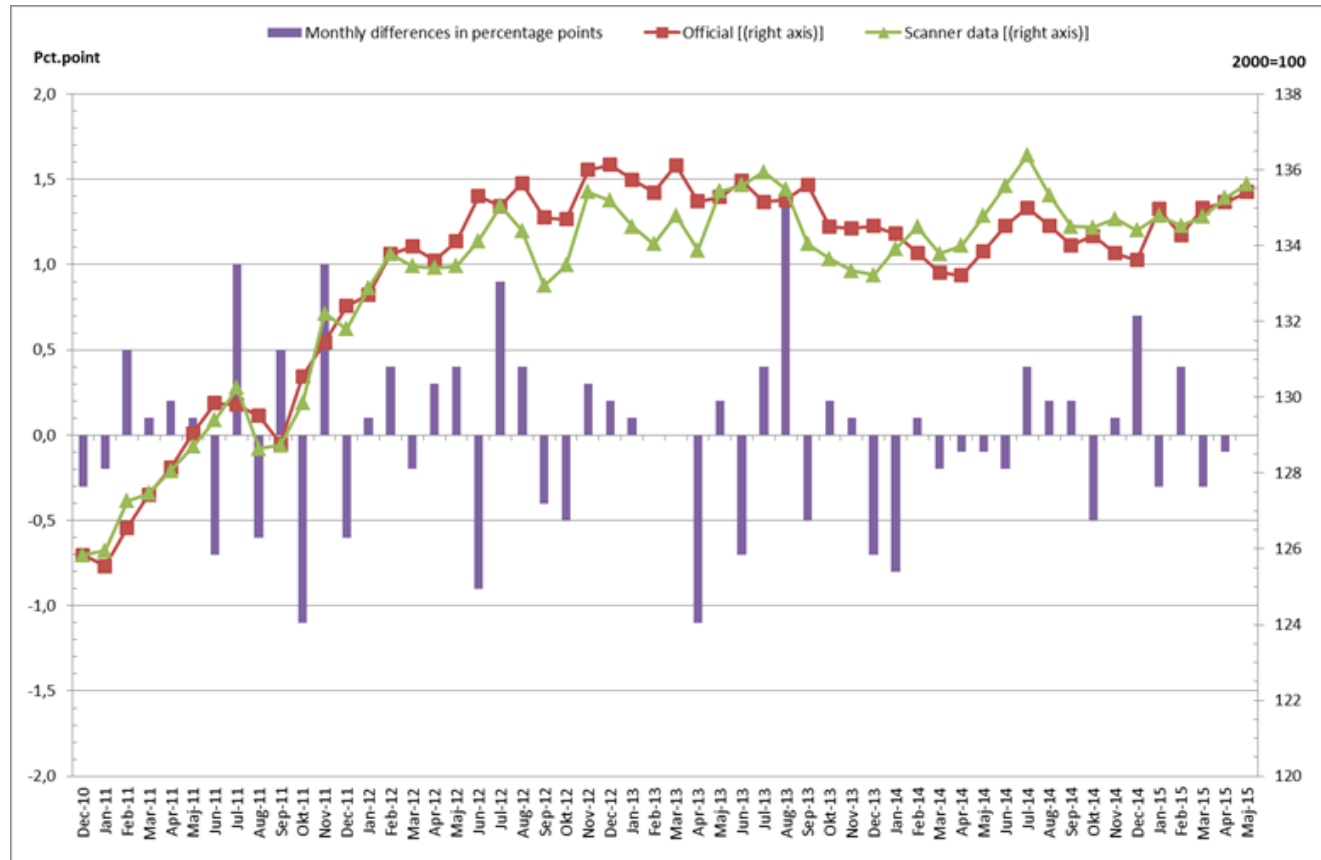
SD, results

Growth rates, total CPI:

	pct.	
	Official CPI	Scanner data CPI
2012	2,4	2,4
2013	0,8	0,8
2014	0,6	0,6
2015 (jan-may)	0,4	0,4

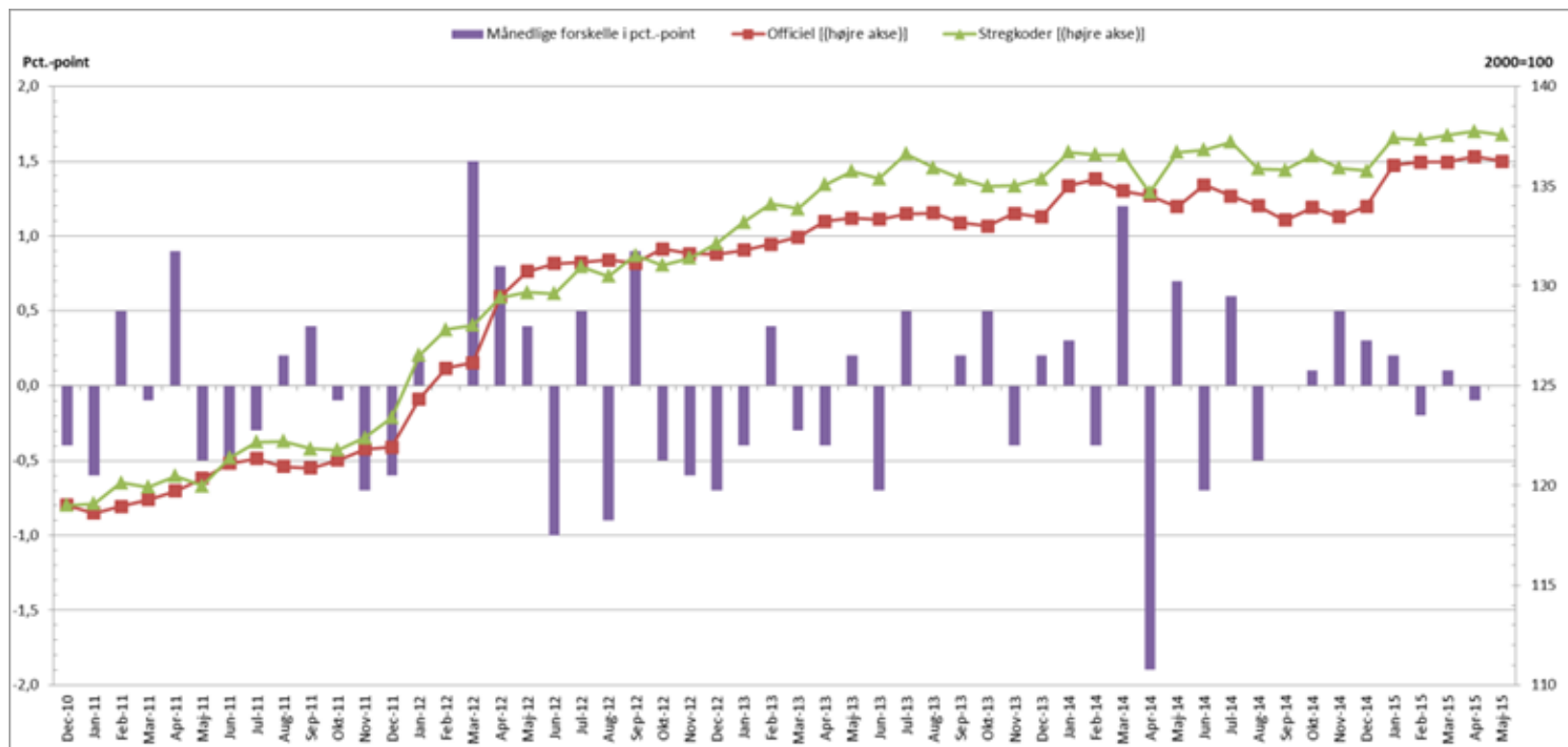
SD results

Food and non-alcoholic beverages:



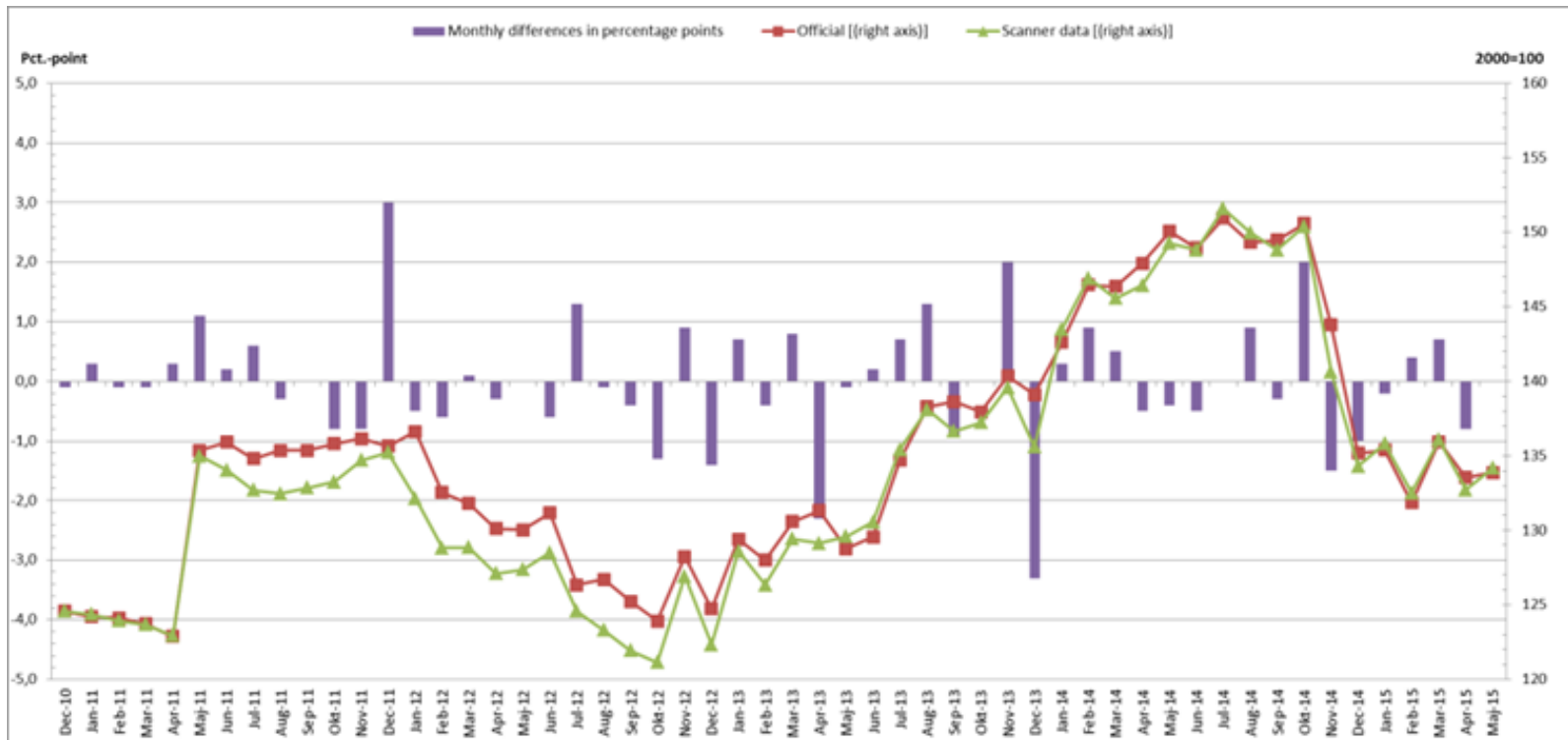


Alcoholic beverages and tobacco



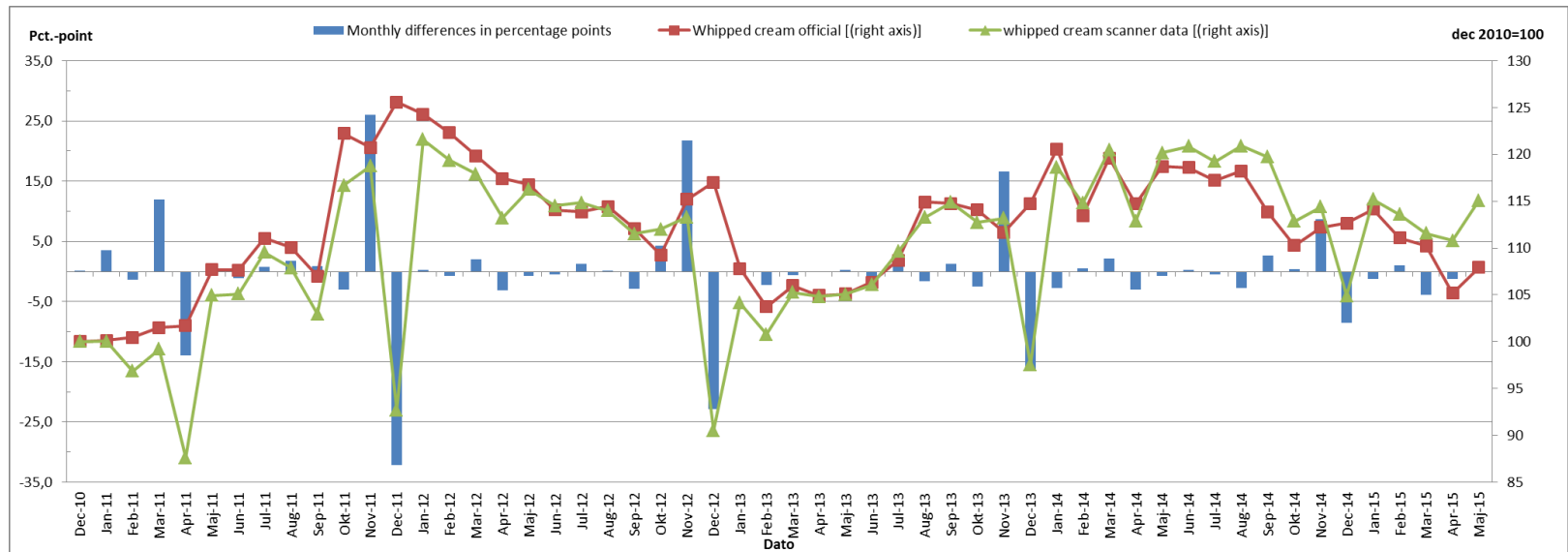
Scanner data- grouping

Low-fat milk, no significant differences:



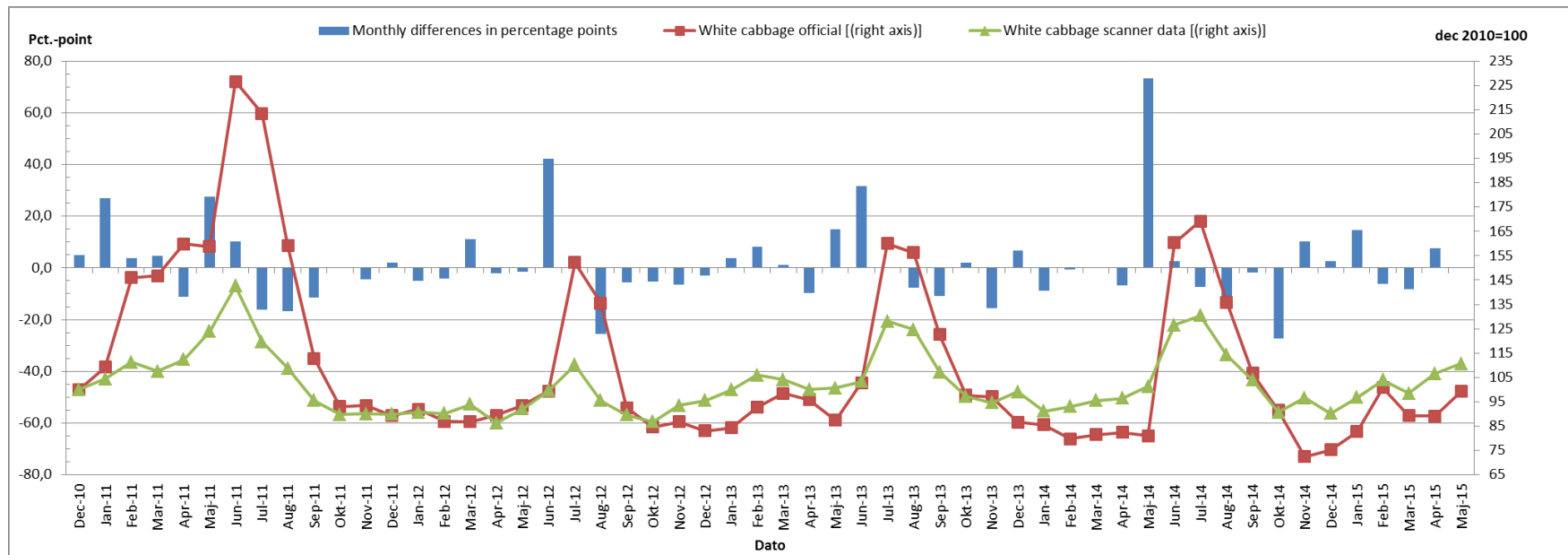
SD results

Whipped cream, scanner data is better:

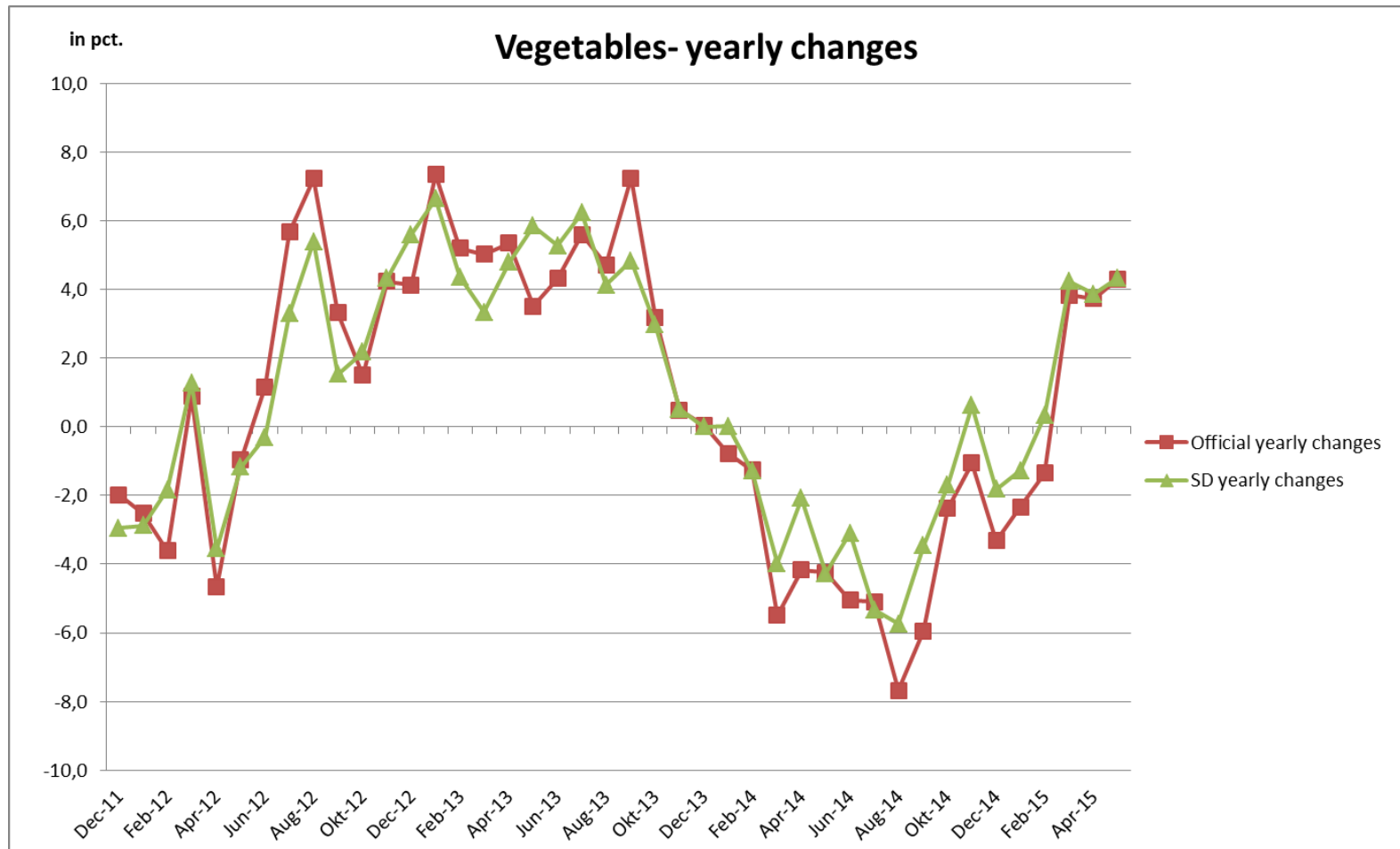




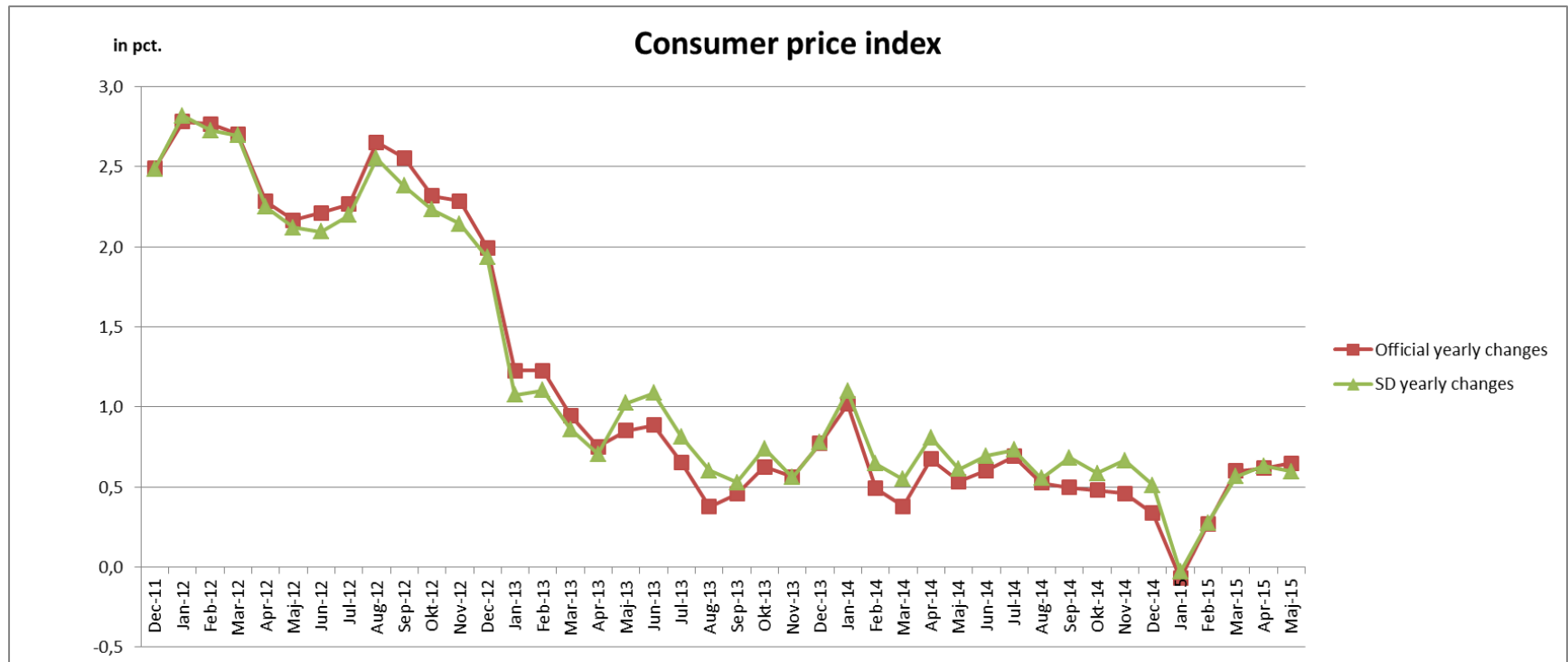
White cabbage, different source:



Seasonal patterns may change



Impact on total CPI



Challenges

- Informal contracts with chains may imply the risk that we don't receive the data. We have made informal contracts with the supermarkets chains
- Flaws in the delivery of data
- Match between goods leaving the sample and the ones entering
- Dataflaws in scanner data
- Short production time

