

Initial Data Testing Mountain Scanner Data

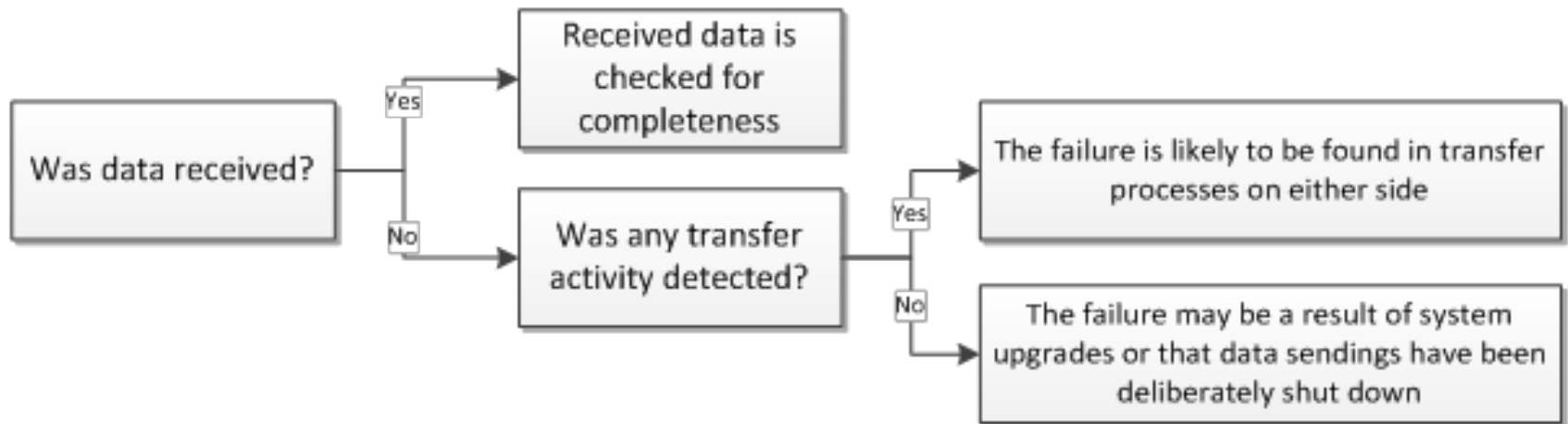
H. Erika Guðmundsdóttir
Statistics Iceland

*Meeting of the Group of Experts on Consumer Price Indices
Palais des Nations, Geneva, 2 – 4 May 2016*

Initial Data Testing

1. Data reception
2. Completeness of data transfer
3. Testing data content

1. Data Reception Tests



The test conduces to

- Early detection of problems in data delivery
- Lowering response burden

2. Completeness of Data Transfer (a)



The test conduces to

- Highlight issues that affect how the data should be treated

2. Completeness of Data Transfer (b)

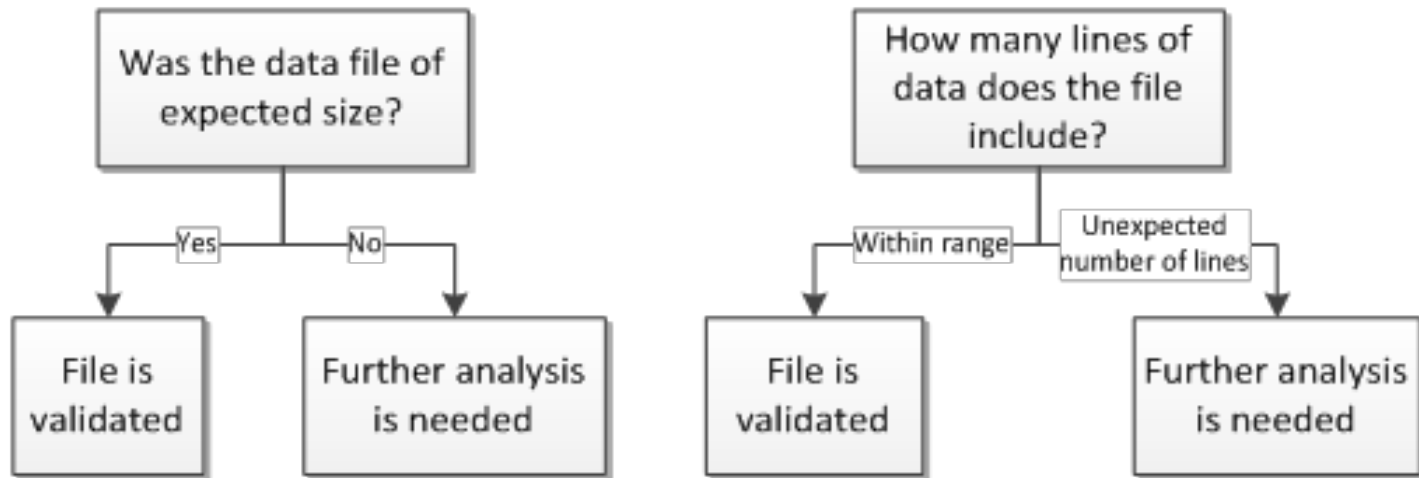
Store / Chain		- 8 days	- 7 days	- 6 days	- 5 days	- 4 days	Today - 3 days	60 day average
Townsquare / Chain 1	Number of data lines	4,363	5,574	5,972	4,514	3,884		4,681
	Turnover (ISK)	7,806,536	13,043,549	13,714,540	8,495,521	6,428,770		9,454,048
	Quantity	25,843	42,715	44,246	28,648	22,099		30,404
Birdstreet / Chain 2	Number of data lines	1,175	1,477	979	690	1,309	1,274	1,185
	Turnover (ISK)	945,400	1,149,798	633,668	399,460	987,293	1,037,490	862,058
	Quantity	3,148	3,786	1,999	1,402	3,275	3,195	2,869
Fishmarket / Chain 3	Number of data lines	885	1,062	897				849
	Turnover (ISK)	769,999	985,504	720,249				714,978
	Quantity	2,180	2,704	1,980				2,086

Store	Last data transmission	Number of days since last transmission
Store 1	3/21/2016	9
Store 2	3/21/2016	9

The test conduces to

- Find if store data is missing
- Resume interrupted processes

3. Internal File Tests



The test conduces to

- Check if the data files contain the correct data

4. Analysing the Data

All data files contain

- Date of sales
- Barcode (EAN)
- Price lookup code (PLU)
- Store's own product number (OWN)
- Product description
- Unit of sale
- Category ID
- VAT rate
- Value
- Quantity

OWN	EAN	PLU	Around
X	X		98%
X	X	X	1%
X		X	<0.5%
X			<0.5%
Other combinations			0%

4. Analysing the Data (cont.)

A

time	OWN	Description	NSI - ID
T1	010014	Grocery bag.	Same product NSI - ID
T2	010014	Grocery bag	can stay the same

B

time	OWN	Description	NSI - ID
T1	23400	Brown bread, 500 gr	Should the ID change?
T2	23400	Brown bread, 400 gr	

C

time	OWN	Description	NSI - ID
T1	33400	White bread	Has the product
T2	33400	White bread, 400 gr	changed?

D

time	OWN	Description	NSI - ID
T1	503	Washing powder	A completely different
T2	503	Carrot Cake	Product that needs a new NSI - ID

Thank you for your attention

Contact info:

H. Erika Guðmundsdóttir

Head of Price Statistics

Statistics Iceland

erika.gudmundsdottir@stative.is

