

The Supply-Use Tables In Mexico

Mayo 2016

Outline

1. Conceptual Framework

1.1 Supply-Use Tables (SUT)

1.2 Extended Supply Use Tables (E-SUT)

2. Construction of the E-SUT: Case Mexico

2.1 Links between the Microdata of Economic Census, Economic Surveys, and Administrative Records

- Stage 1: Goods for processing
- Stage 2: Focus Exporters
- Stage 3: Focus Ownership
- Stage 4: Establishment size

3. How the SUT are presented in México?

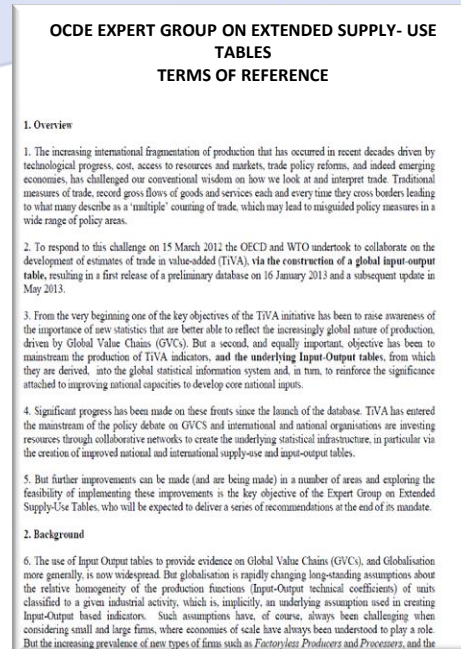
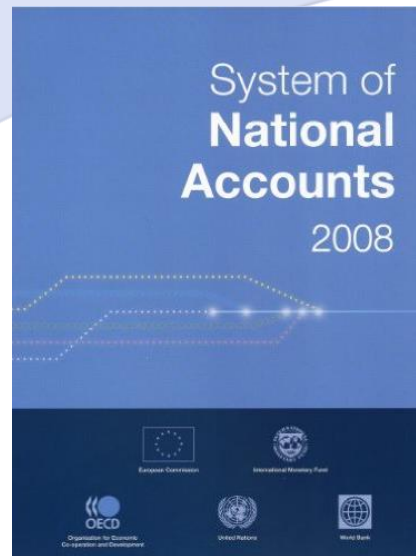
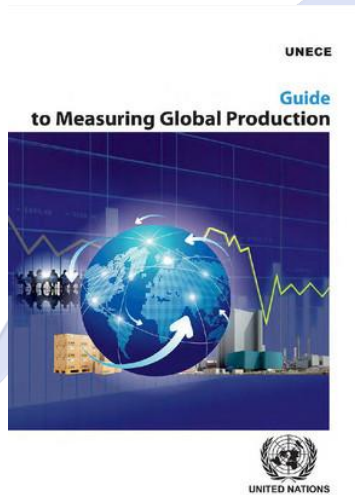
4. Results to 2018: How the E-SUT will be presented in Mexico?

1.1 Establishments versus Enterprises

5. Challenges and conclusions



1. Conceptual Framework



Guide to Measuring Global Production (2015), National Accounts System (2008), OCDE Expert Group on Extended Supply-Use Tables Terms of Reference, (2014).



INSTITUTO NACIONAL
DE ESTADÍSTICA Y GEOGRAFÍA

Defining The Supply Use Tables

- They are a powerful **tool** with which to **compare** and **contrast** data from various sources and **improve** the **coherence** of the economic information system. (SNA 2008, 14.3)
- [...] They permit an **analysis of markets and industries** and allow the **productivity** to be studied at this level of disaggregation. (SNA 2008, 14.3)
- [...] The supply and use tables are **built** from **establishment** data, they provide a link to **detailed economic statistics** outside the scope of SNA (SNA 2008, 14.3)



2. Construction of the E-SUT: Case Mexico



Using the **SUT**, that provides an analysis for the whole economy, the resources in terms of production and imports, the use of goods and services in terms of intermediate consumption, final consumption (household and government), gross fixed capital formation, exports and statistical discrepancy it is possible to build the **E-SUT**.



They are a set of matrices that describe the magnitudes of **the inter-industrial flows** according to production levels of each economic sector and they imply different levels of disaggregation focus on: **ownership, exports-imports and establishment size**.



The SUT are the main source for the construction of International and domestic **Input Output Tables** and they allow the identification of the involvement of the main sectors in Global Value Chains.



2. Construction of the E-SUT: Case Mexico

Ideal breakdown of the E-SUT



2. Construction of the E-SUT: Case Mexico

According to the terms of reference, for México we are considering the next stages:



1. Goods for Processing



2. Exporters



3. Ownership



4. Establishment size

Major information sources:



Economic Census 2014

Administrative Records

Economic Surveys

2. Construction of the E-SUT: Case Mexico

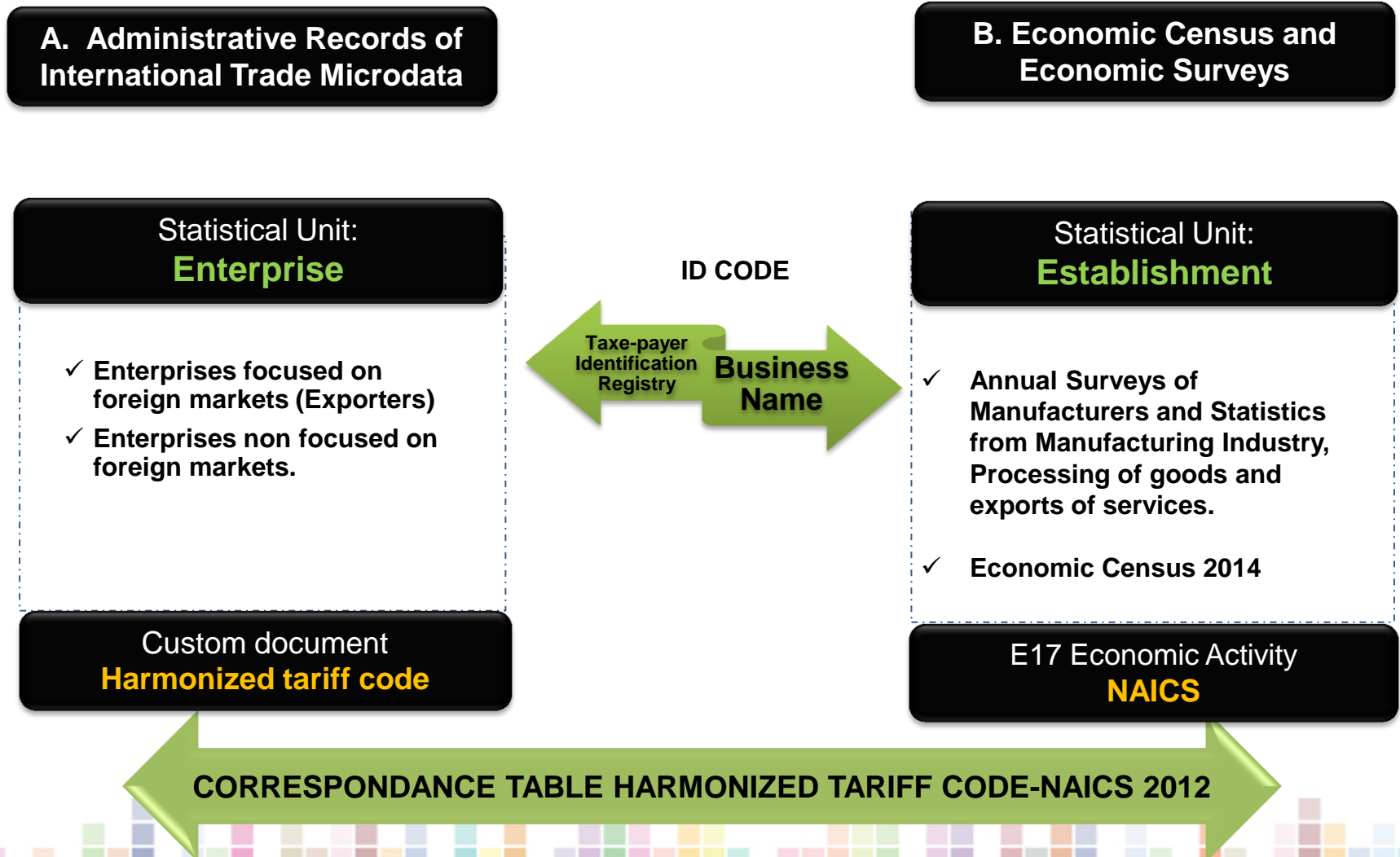
Data Subsets:



INSTITUTO NACIONAL
DE ESTADÍSTICA Y GEOGRAFÍA

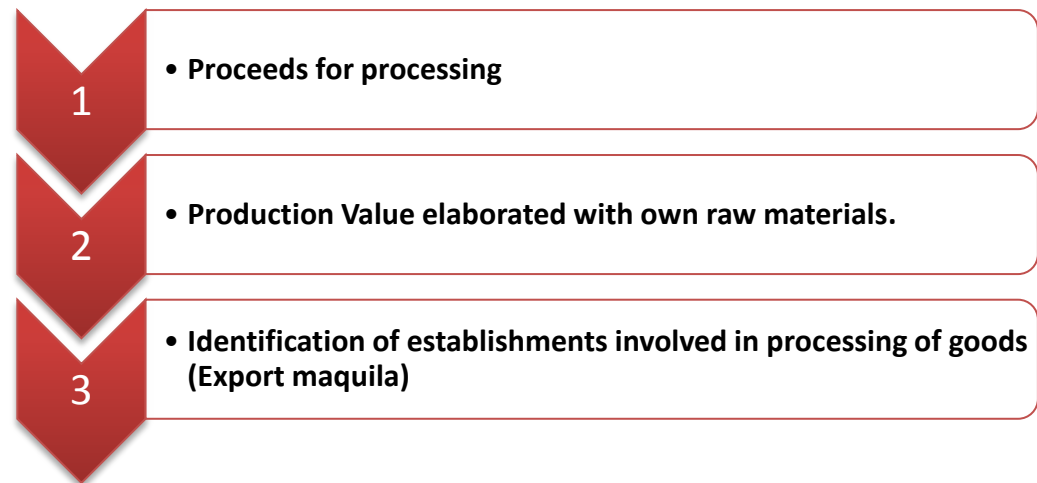
2.1 Linking available microdata

Linking Administrative Records of International Trade Microdata, Economic Census and Economic Surveys



Stage 1: Goods for processing (Maquila)

We will use for the reference year as main information source the **Economic Census**, the updating process will be done by the **Economic Services and Administrative Records**, with the aim to identify the production accounts from the establishments involved in **goods for processing**.



Establishments involved in processing of goods (Export maquila)



INSTITUTO NACIONAL
DE ESTADÍSTICA Y GEOGRAFÍA



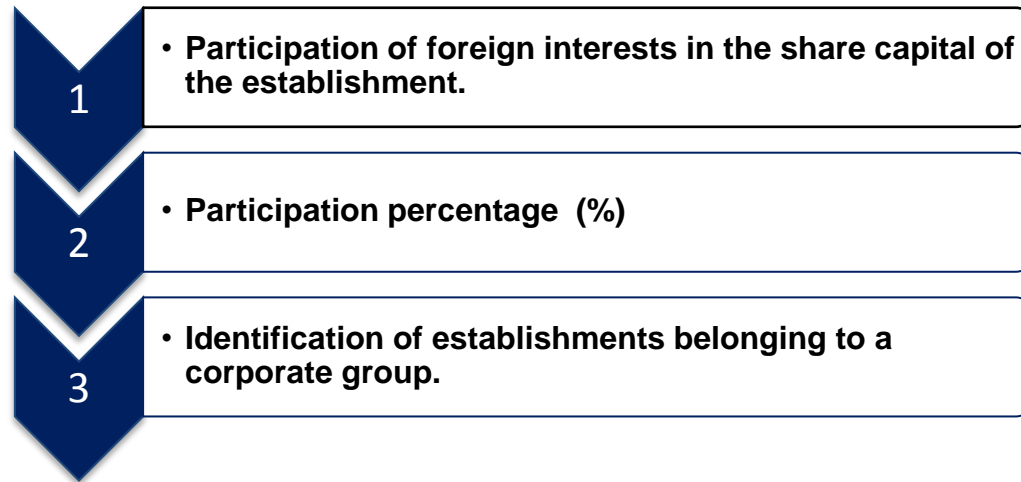
Stage 2: Exporters

Objective: Determining for the reference year through the Economic Census establishments that spend partial or whole production of goods and services to exports.



Stage 3: Ownership focus

Objective: Determining for the reference year through the Economic Census the ownership focus from the results obtained on stages 1 and 2.



Foreign



Affiliate



Domestic



Stage 4: Establishment size

Objective: Determining for the reference year through the Economic Census the establishment size identified in the previous stage by economic activity.

1

- Total number of staff employed dependent on the business name : (Men + Women)

2

- Total number of staff employed non dependent on the business name : (Men + Women)

SMALL

MEDIUM

LARGE



3. How the SUT are presented in Mexico?

Supply Table										Use Table																				
Activities			Q			m	ts bp	ttm	txns	ts pp	Activities			ID			II. DF						tu pp							
			Goods and Services											Goods and Services			pc	gc	gfcf	i	x	sd								
Products			Sector 1	Sector 2	Sector 3						Sector 1	Sector 2	Sector 3																	
Goods and Services	Ownership	Sector 1	Domestic Production								Imports	Total Supply at basic prices	Trade and transport margins	Taxes on products – subsidies on products	Total Supply at Purchasers' Price	Goods and Services								Ownership	I. Intermediate Demand					
		Sector 2																												
		Sector 3																												
Gross Value Added		III																												
Total Gross Production																														



4. Results to 2018: How the E-SUT will be presented in Mexico?

3rd level of breakdown: Size of establishment (Small, Medium, Large)

[illegible]

4.1 Establishments versus Enterprises



(...) The supply and use tables are **built** from **establishment** data, they provide a link to **detailed economic statistics** outside the scope of SNA (SCN 2008, 14.3)



Nevertheless, in the terms of reference, it is suggested the Enterprise as statistical unit.



5. Challenges and Conclusions

- 🎯 The E-SUT (2013) will be constructed across the reaching microdata of Economic Census, Economic Surveys and Administrative Records according to the disaggregation required.
- 🎯 We are evaluating a time series for the period (2010-2014).
- 🎯 The E-SUT will be formed with the available information from detailed basic statistics.



INSTITUTO NACIONAL
DE ESTADÍSTICA Y GEOGRAFÍA



Conociendo México

01 800 111 46 34

www.inegi.org.mx

atencion.usuarios@inegi.org.mx



@inegi_informa



INEGI Informa



INSTITUTO NACIONAL
DE ESTADÍSTICA Y GEOGRAFÍA

