



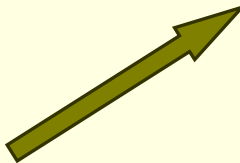
Inna Konoshonok

***Head of the Living Standards Statistics
and Household Survey Department***

***Poverty and vulnerability:
social portrait***

Measuring poverty (low income)

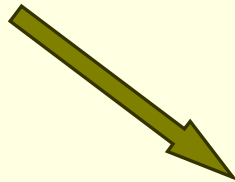
***Poverty
concepts***



Absolute poverty



Relative poverty



Subjective poverty

Absolute poverty

***Statutory national poverty line –
minimum subsistence budget***

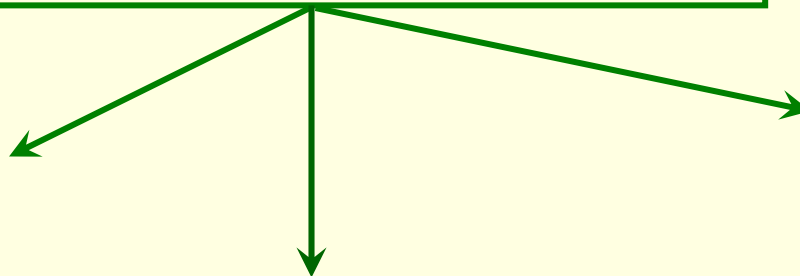
***Article 1 of the Law of the Republic of Belarus “On the
minimum subsistence level in the Republic of Belarus”:
low-income individuals (families) are
individuals (families) with average per capita
income below the minimum subsistence
budget (for objective reasons)***

Absolute poverty

Poverty line –
minimum subsistence budget

Income indicator –
disposable resources

*money
funds*

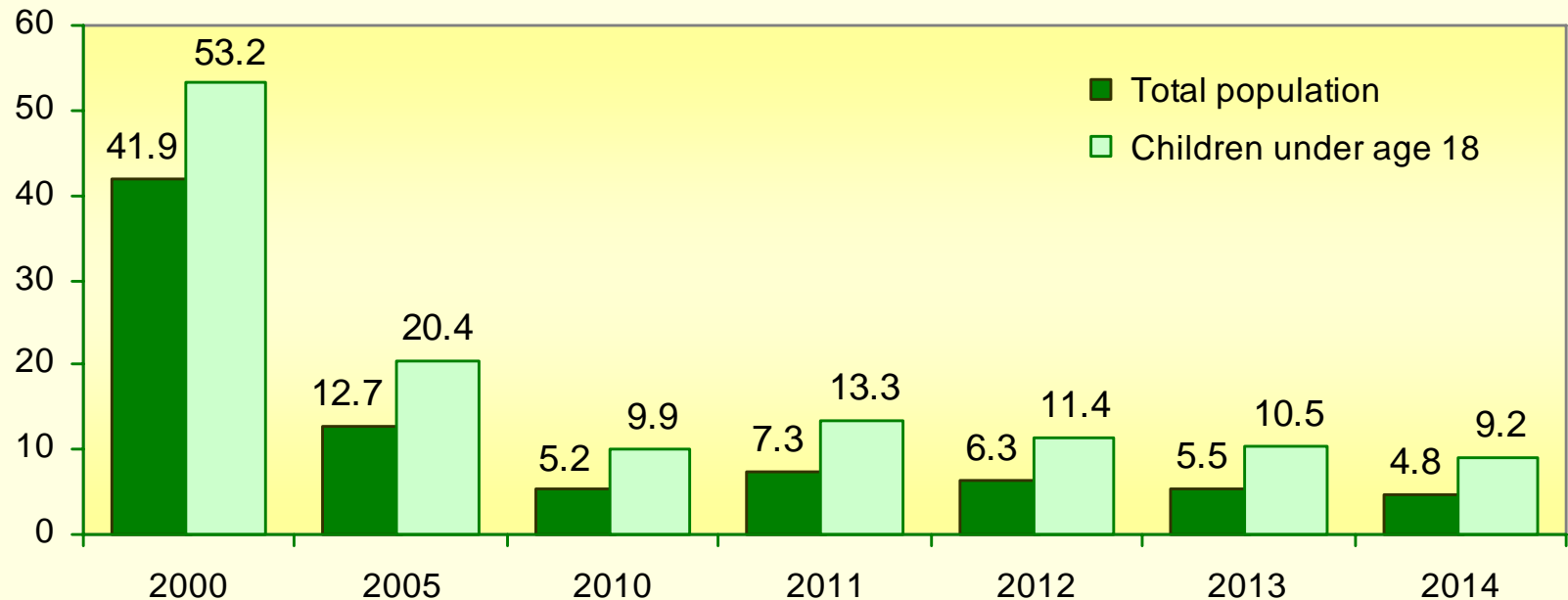


*value of consumed
home-grown produce*

*value of in-kind
benefits and
payments*

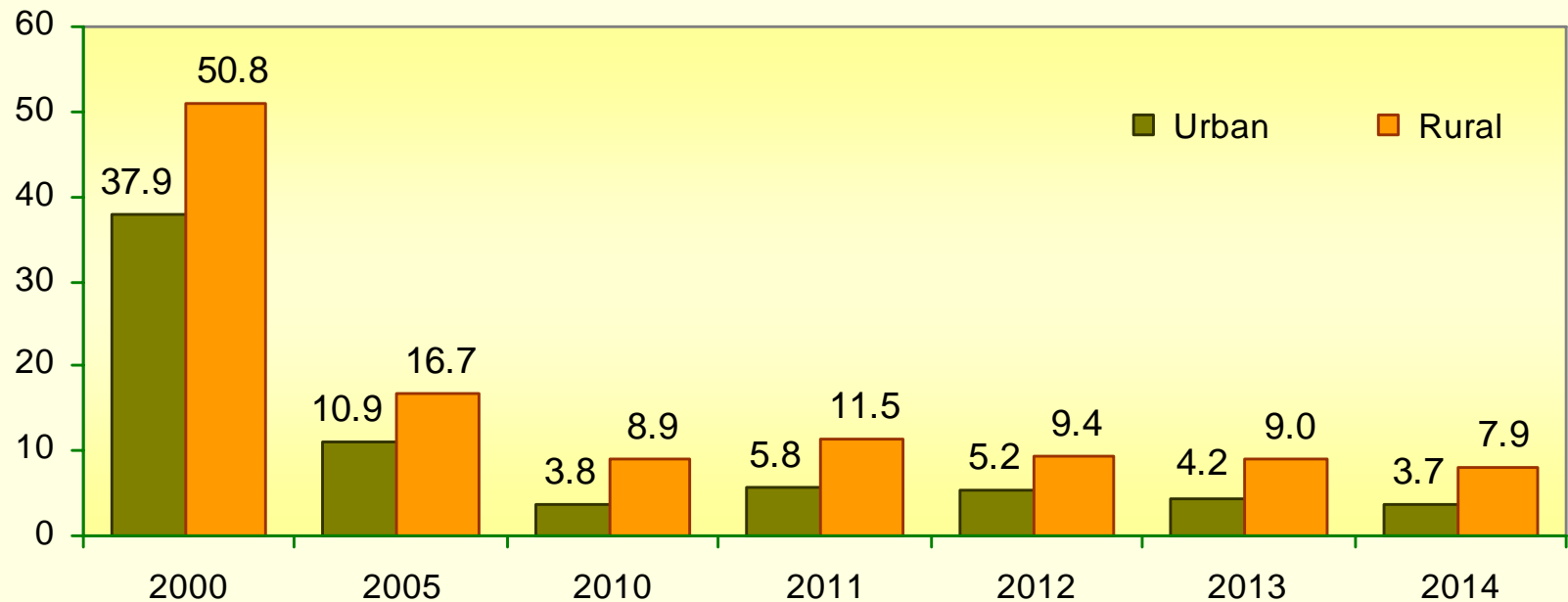
Absolute poverty

Low-income rate of population *(percent of total population of corresponding group)*



Absolute poverty

Low-income rate of urban and rural population *(percent of total population of corresponding group)*



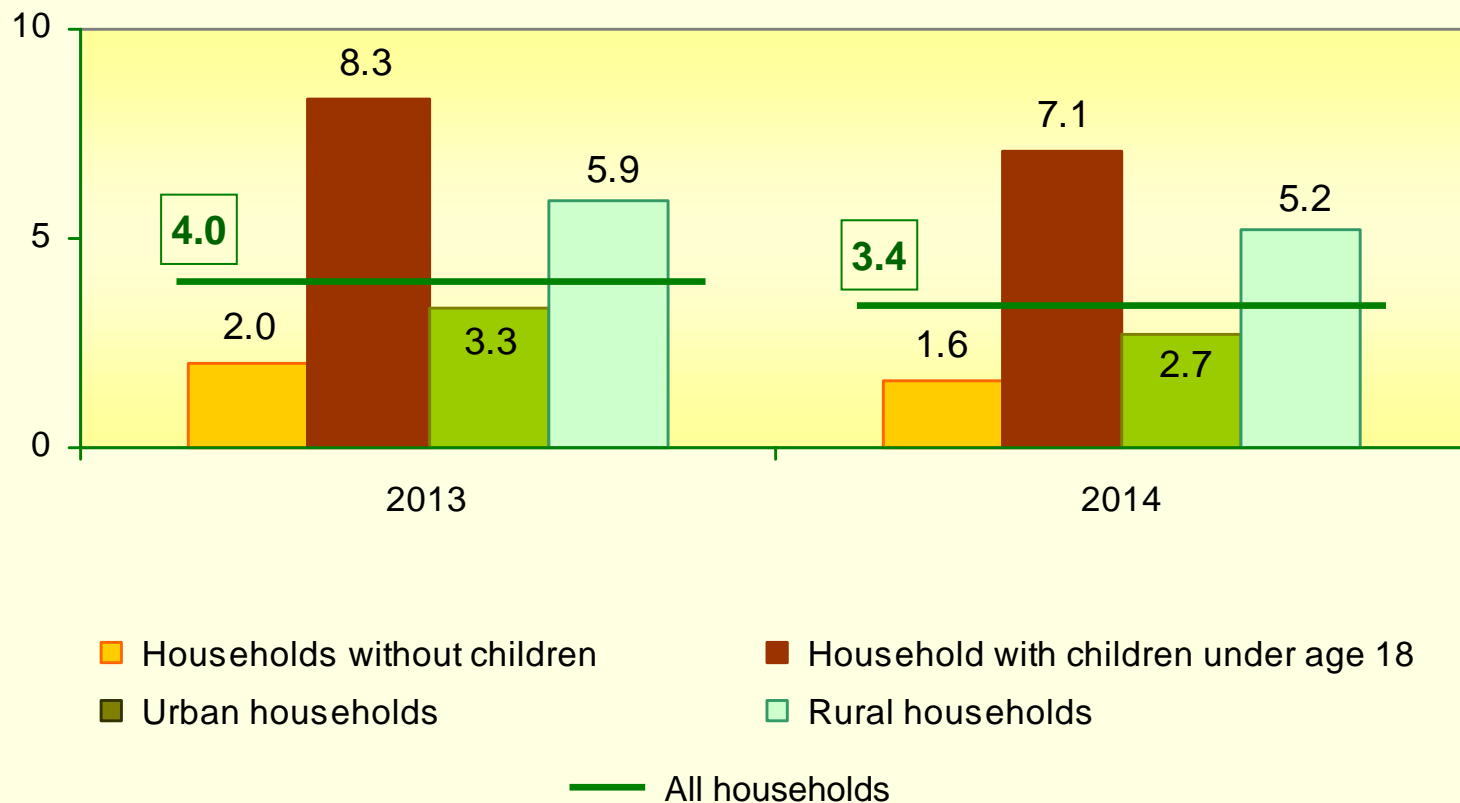
Shallow poverty

(2014; percent of total population of corresponding group)

<i>Poverty line</i>	<i>Total population</i>	<i>Children under age 18</i>	<i>Rural population</i>
90% of minimum subsistence budget	2.6	5.0	4.1
Minimum subsistence budget	4.8	9.2	7.9
110% of minimum subsistence budget	6.2	11.5	9.5

Absolute poverty

(percent of total households of corresponding group)



Households of various types by deciles

(2014; percent of total)

	Total	Of which by deciles									
		1	2	3	4	5	6	7	8	9	10
Households without children	100	5.4	7.6	8.9	9.5	10.1	10.6	10.7	11.5	12.5	13.2
Households with children under age 18	100	19.6	14.9	12.3	11.0	9.8	8.7	8.5	6.9	4.9	3.4
of which with:											
1 child	100	13.0	11.4	11.8	11.6	10.9	10.4	10.8	9.2	6.5	4.4
2 or more children	100	31.1	21.1	13.2	10.1	7.8	5.5	4.5	2.8	2.2	1.7

Absolute poverty of households with children under age 18

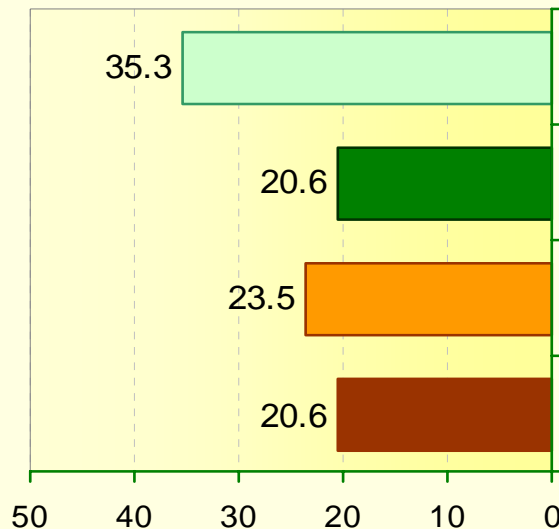
(2014; percent of total households of corresponding group)

	<i>Households with children</i>	<i>Of which with 2 or more children</i>
Poverty rate:		
including children's allowances	7.1	11.8
excluding children's allowances	12.5	21.4
Percentage share of children's allowances in total household incomes	6.4	10.3

Duration of poverty

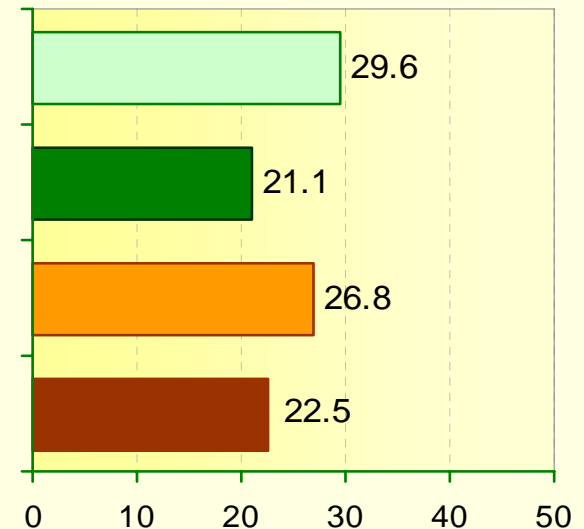
(2014; percent of total low-income households
of corresponding group)

All households



Staying below
poverty line:

Households with children

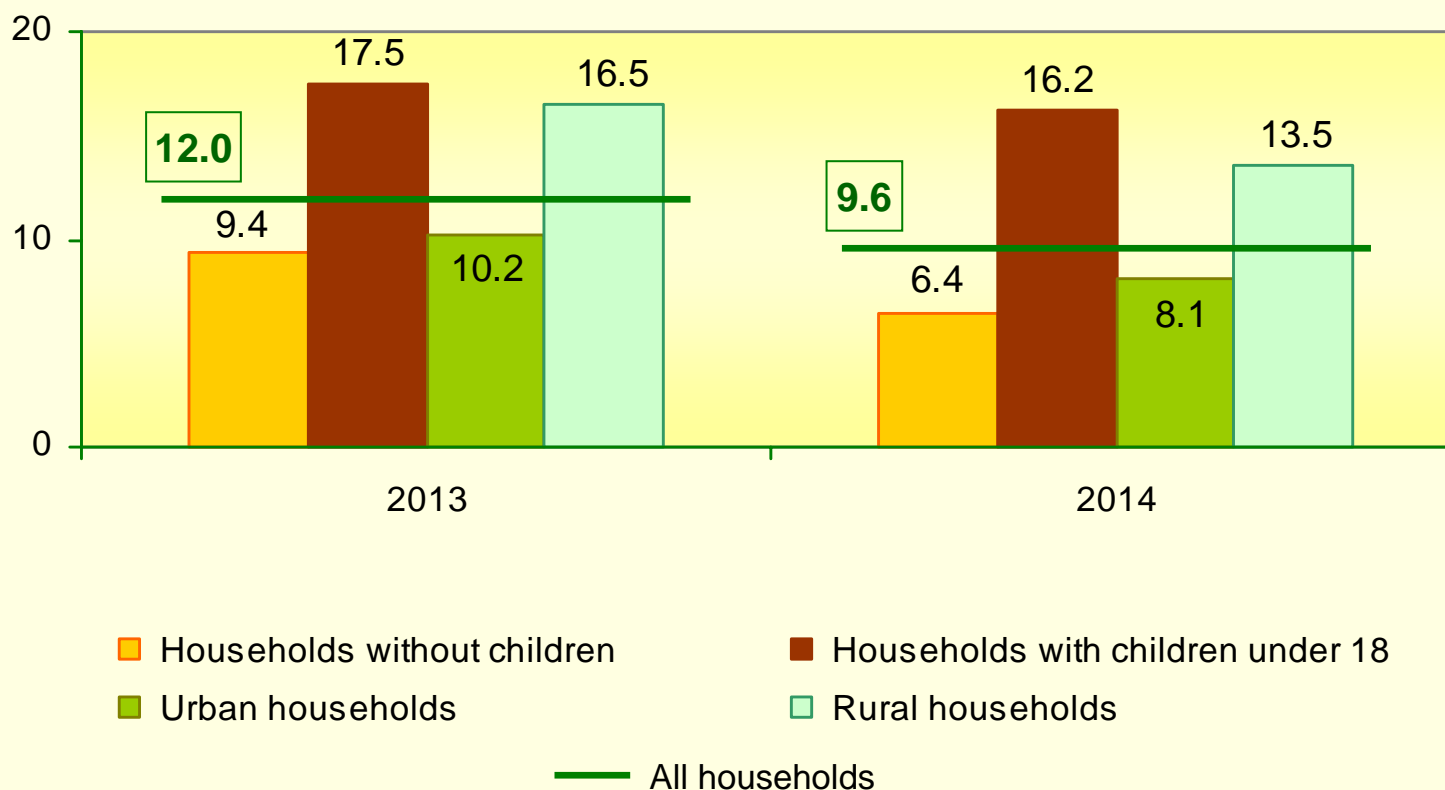


Relative poverty

- ✓ **Relative poverty line –**
60% of the national average
per capita equivalised median
disposable resources
- ✓ **Relative poverty line is 50% higher**
than absolute poverty line (2014)

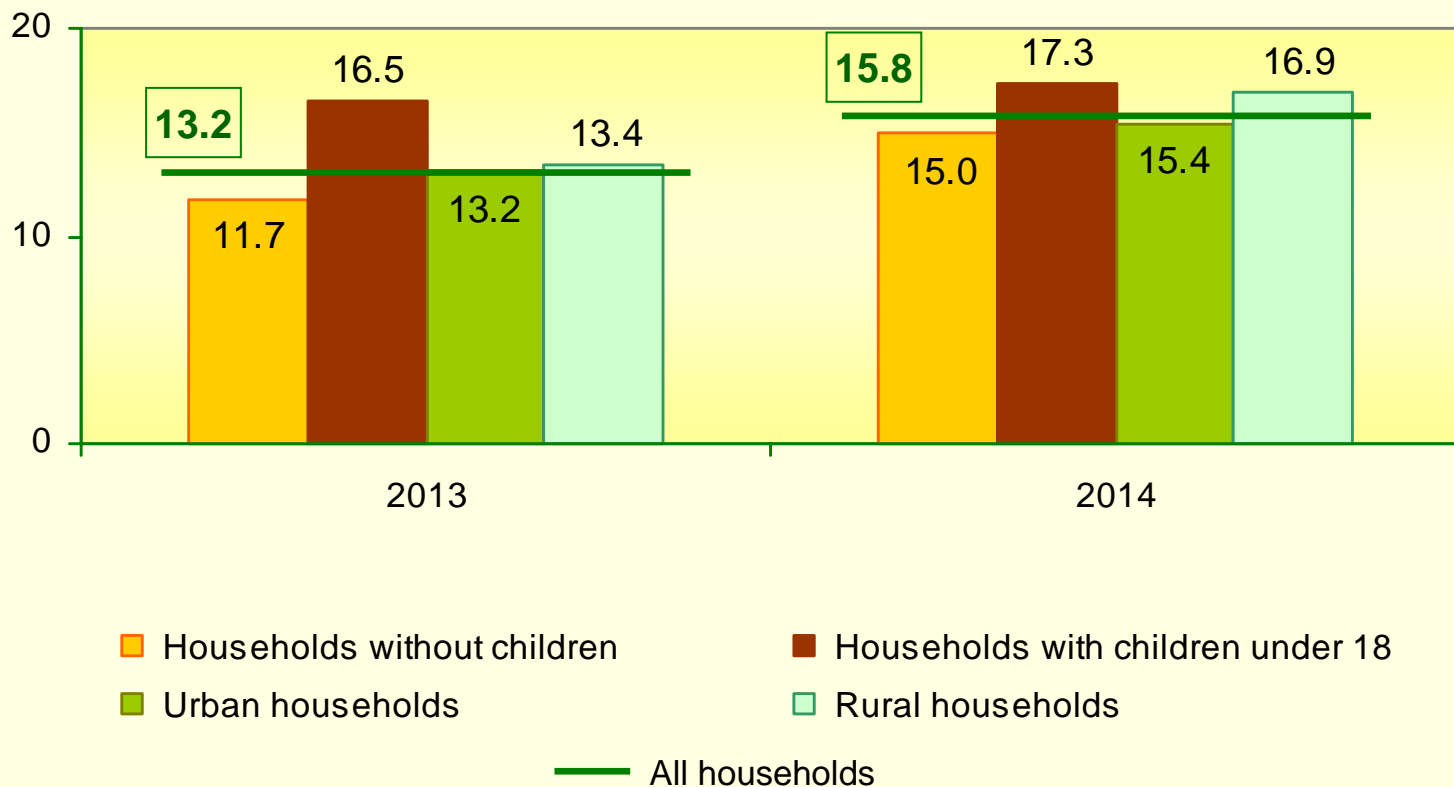
Relative poverty

(percent of total households of corresponding group)



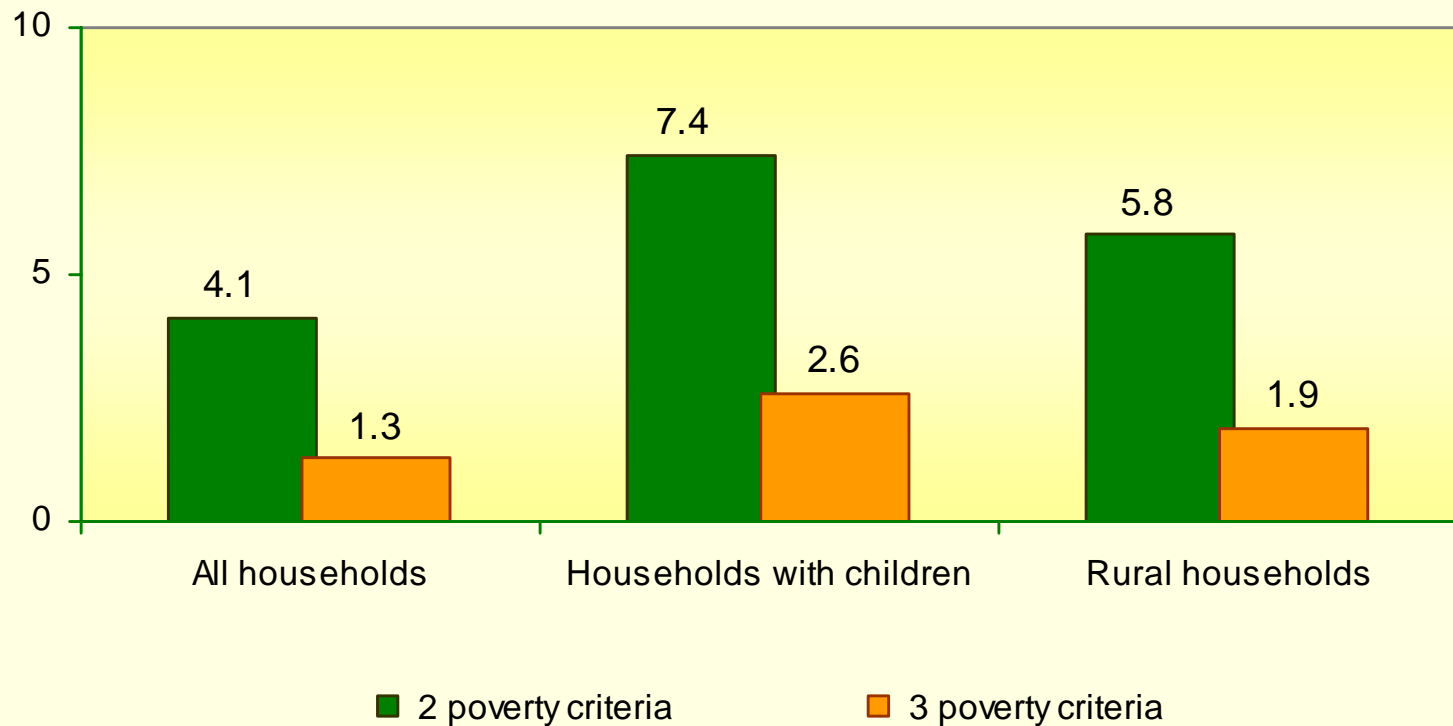
Subjective poverty

(percent of total households of corresponding group)



Combined approach to poverty assessment

(2014; percent of total households of corresponding group)



Poverty and vulnerability: social portrait

(sample household living standards survey;
2014; percent of total households of corresponding group)

Households with children



Rural households



poverty (low income):

7.1	←	<u>absolute</u>	→	5.2
16.2	←	<u>relative</u>	→	13.5
17.3	←	<u>subjective</u>	→	16.9
2.6	←	<u>combined</u> (3 criteria)	→	1.9



***Thank you
for you attention!***

