

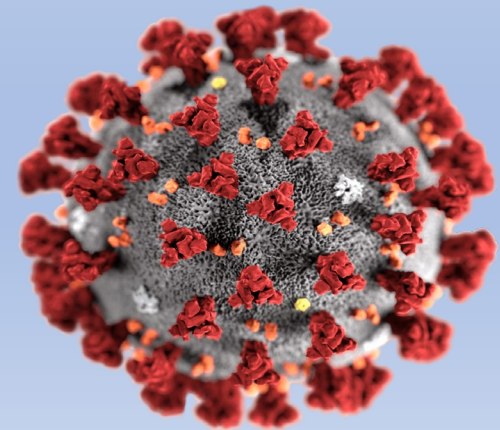
Poverty and inequality statistics during pandemic

Yashar Pasha



Data collection during COVID-19 pandemic

- **Almost all face-to-face interviews replaced with CATI interviews**
If necessary interviewers were advised to wear mask and gloves
 - *to keep the distance*
 - *not to enter the households*
 - *use sanitizer*
 - *not to drink tea/coffee/water in the households while visiting households*
- **Interviewer used phone (both mobile and landline) and WhatsApp to collect data from respondents.**
 - *As some of interviewers infected virus others had to work harder for a certain period*
 - *In some rural places slow internet connection caused tardity*

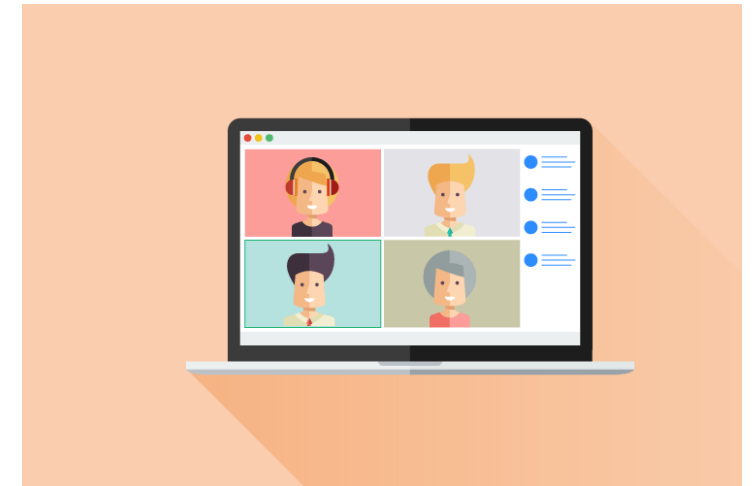
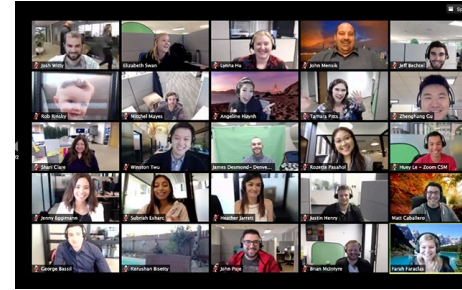


- Training for the new interviewers was held by Zoom

- New interviewers were trained online.

- All monitorings and hands on activities were postponed in 2020

- 2 hands on activities, 11 complex monitorings were postponed



Supervisors worked from home for few months

- Only %30 of the staff were allowed to work routinely from office in April-May
- Only %10 of the staff were allowed to work routinely from office in June-August
- Only %50 of the staff were allowed to work routinely from office in September-October
- %30 of the staff are being suggested to work from office and supervisors come office in turns



Goal 1: End poverty

Indicator 1.1.1 Proportion of population below international poverty line disaggregated by sex, age group, employment status, and geographical location (urban/rural)

- By PPP this indicator for 2017 was 156 and no poverty Azerbaijan by this line



poverty

Goal 1: End poverty

Indicator 1.2.1 Proportion of population living below **national poverty line**, disaggregated by sex and living place

	2018	2019
Total	5.1	4.8
Urban	4.8	4.5
Rural	5.4	5.2

	2018	2019
Total	5.1	4.8
Male	5.2	5.0
Female	4.4	4.2

Goal 1: End poverty
Indicator 1.2.1 and 1.2.2

- Household head is men 5.3
- Household head is women 5.1
- *Age of household head*
- 18-29 6.8
- 30-39 6.0
- 40-49 5.7
- 50-59 4.3
- 60 and more 5.6

Goal 1: End poverty

Indicator 1.3.1 Percentage of the population covered by **social protection floors/systems** disaggregated by sex, and distinguishing children, unemployed, old age, persons with disabilities, pregnant women/newborns, work injury victims, poor and vulnerable

No information for this indicator

Goal 1: End poverty

Indicator 1.4.1: Proportion of population living in households with access to basic services

- Drinking water service yes
- Sanitation service yes
- Hygiene facilities no
- Electricity yes
- Clean fuels no
- Mobility no
- Waste collection yes
- Health care yes
- Education no
- Broadband internet yes

Goal 1: End poverty

Indicator 1.4.1: Proportion of population living in households with access to basic services

- **Safely managed drinking water services**
- 6.1.1 Proportion of population using safely managed drinking water services
- **Safely managed sanitation services**
- 6.2.1 Proportion of population using safely managed sanitation services, including a hand-washing facility with soap and water
- **Waste collection**
- 11.6.1 Proportion of urban solid waste regularly collected and with adequate final discharge out of total urban solid waste generated, by cities

continue

- **Mobility and transport**
 - 9.1.1 Proportion of the rural population who live within 2 km of an all-season road
 - 11.2.1 Proportion of population that has convenient access to public transport, by sex, age and persons with disabilities
- **Modern energy**
 - 7.1.1 Percentage of population with access to electricity
 - 7.1.2 Percentage of population with primary reliance on clean fuels and technology
- **ICT**
 - 5.b.1 Proportion of individuals who own a mobile telephone, by sex
 - 9.c.1 Proportion of population covered by a mobile network, by technology
- **Education**
 - 4.1.1 Percentage of children/young people: (a) in grades 2/3; (b) at the end of primary; and (c) at the end of lower secondary achieving at least a minimum proficiency level in (i) reading and (ii) mathematics.

National poverty line & level

	2005	2010	2015	2016	2017	2018	2019
Poverty threshold, AZN	42.6	98.7	135.6	148.5	165.7	175.2	185.5
Poverty level, %	29.3	9.1	4.9	5.9	5.4	5.1	4.8

-
- **Thanks!**
 - www.stat.gov.az

yashar.pasha@stat.gov.az