

Current international standards on measuring international labour migration from the Guidelines by the 20th International Conference of Labour Statisticians (ICLS)

Mustafa Hakki ÖZEL
ILO, Geneva

**UNECE Meeting of the Group of Experts on Measuring Quality of Employment
6-8 November 2019 , Geneva**

Objective /Content

1

ICLS Guidelines concerning statistics of international labour migration

2

Implementation of ICLS Guidelines: *Development of methodologies for the collection of data on international labour migration*

International labour migration

1

International migrant workers;

- Usual residents
- Non-resident foreign workers practices

2

For-work international migrants;

3

Return international migrant workers.

4

Citizens or native-born persons working abroad.

Paragraph 2

Working toward this broader goal, the ILO is formulating a strategy for the development of appropriate methodologies for data collection with a detailed time-table on:

Concepts and definitions - 2/4

International migrant workers

... is meant to measure current labour attachment of the two groups based on labour attachment & presence criteria.

All persons of working-age who are present in the country of measurement:

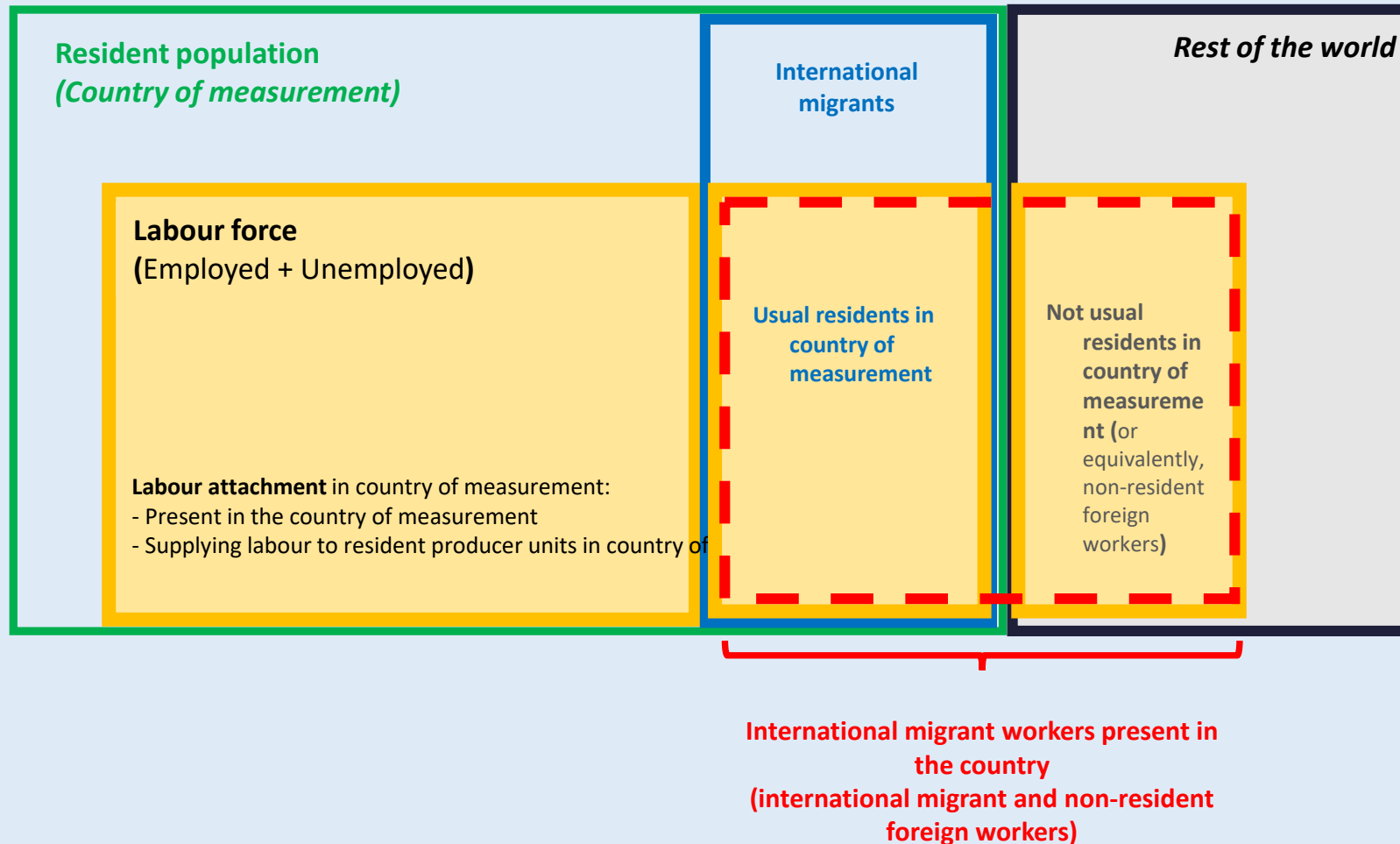
1

Usual residents in the labour force

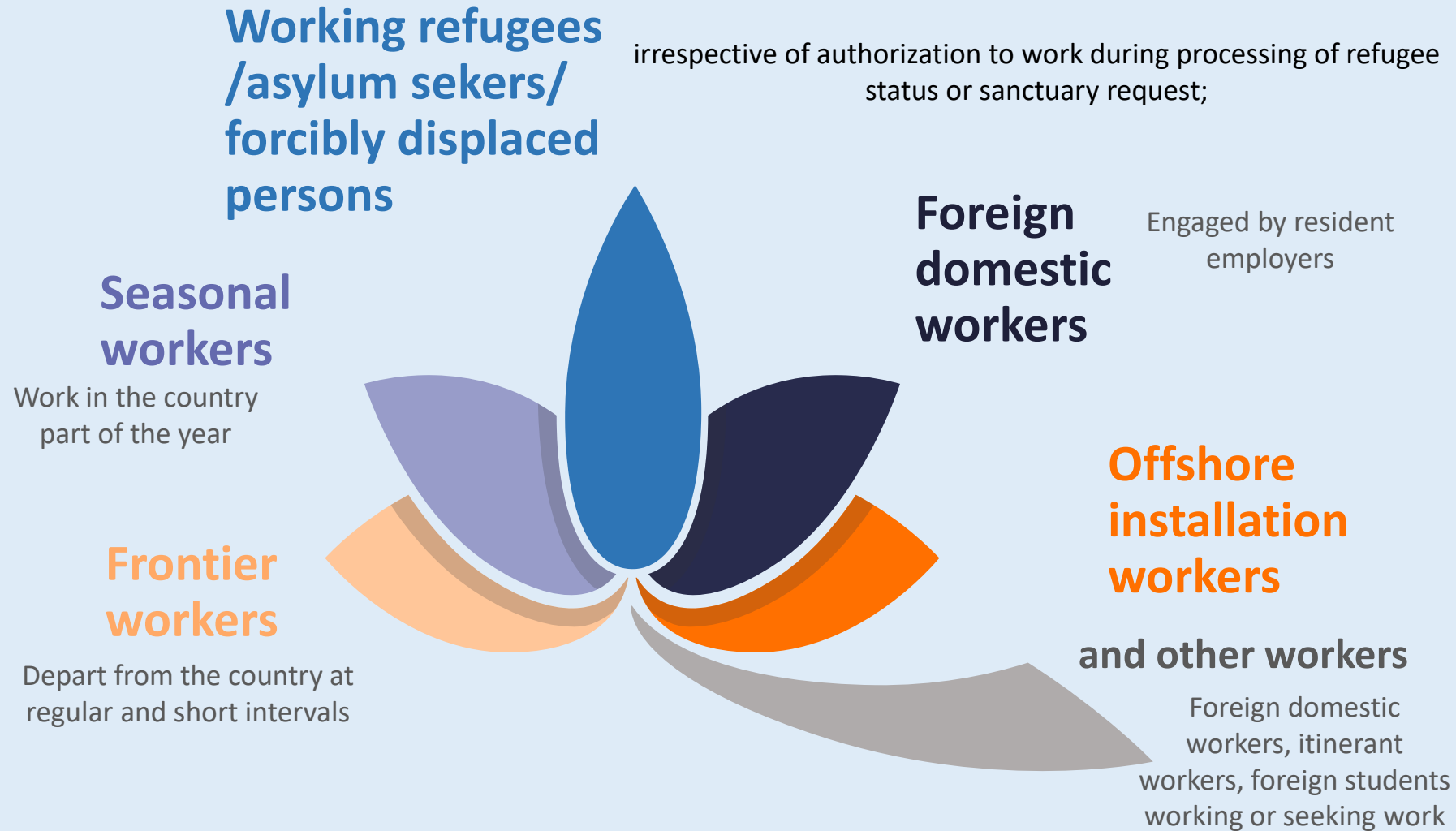
2

Non residents with labour attachment to the country (working or seeking work)

Measurement framework of international migrant workers



Some specific examples of international migrant workers



EXCLUDED: Foreign military, diplomatic personal, Call Center Staff
International travelers on tourism trip (even if worked incidentally)

Concepts and definitions - 3/4

For-work international migrants

... is intended to measure the movements of persons from one country to another for the purpose of undertaking or seeking work

Usual residents and not usual residents who entered the country for the declared purpose work

- ▶ Intention to undertake or seek employment
- ▶ Intention declared at time of entry (official immigration registers, other documents...)

Concepts and definitions - 4/4

Return international migrants

... is intended to provide a basis for measuring the work experience of persons returning after being international migrant workers abroad

All current residents who were previously international migrant workers in another country(ies)

- ▶ Irrespective of their current labour force status
- ▶ Include those previously working abroad without being usual resident of the country where they worked

**Development of methodologies for
the collection of data on
international labour migration:
*A Strategy paper***

Strategy for development of methodologies

1

The review of national sources and country practices concerning ILM

2

Development of viable methodologies for each of the main and sub-categories of ILM

3

Discussion of the outcomes with a Working Group of Experts

4

Country studies to pilot and field test the agreed methodologies in selected countries

5

Report to the 21th ICLS

Strategy: Country studies

a

14/a: Lebanon, Jordan Kuwait, Turkey;

14/b: Brunei, Iran, Switzerland, Turkey;

For-work IM: Colombia, Kuwait, South Africa;

Return IMW: Bangladesh, Moldova, Mexico;

Citizens or Native born working abroad: Philippines, Morocco, Tunisia, Venezuela

b

Other countries

c

Overall framework

Strategy : Country studies – Overall framework

a To review the existing data sources on each element of international labour migration;

b To identify, in collaboration with the national statistical office and relevant national stake-holders, the main categories of international labour migration of particular interest in the country;

c To use the existing data sources, one of them preferably the labour force survey or another suitable national household survey, to make preliminary estimates of the elements of international labour migration specified under (1) and the main categories of international migrant workers identified under (2);

d Where multiple estimates of the main categories of international labour migration may be developed, the different estimates may be reconciled using appropriate procedures, for example, reconciliation tables similar to those developed on estimates of international migrant workers in Brunei Darussalam in the present document;

e Develop appropriate methodologies to improve the accuracy of the preliminary estimates, and to develop new data sources or new methodologies where preliminary estimates could not be made with existing data sources and methodologies; accuracies.

f Test the new data sources and new methodologies on small-scale and experimental conditions and assess their effectiveness and accuracies.

Strategy: 21st ICLS

a

Methodological guidelines

b

Time- table for major activities



**Thank you for your
attention!**