



Measurement of Quality Employment: Experience of the Russian Federation

Olga Zhikhareva

**Deputy Director of Department on Labour,
Science, Education and Culture Statistics**

2011

SAFETY AT WORK



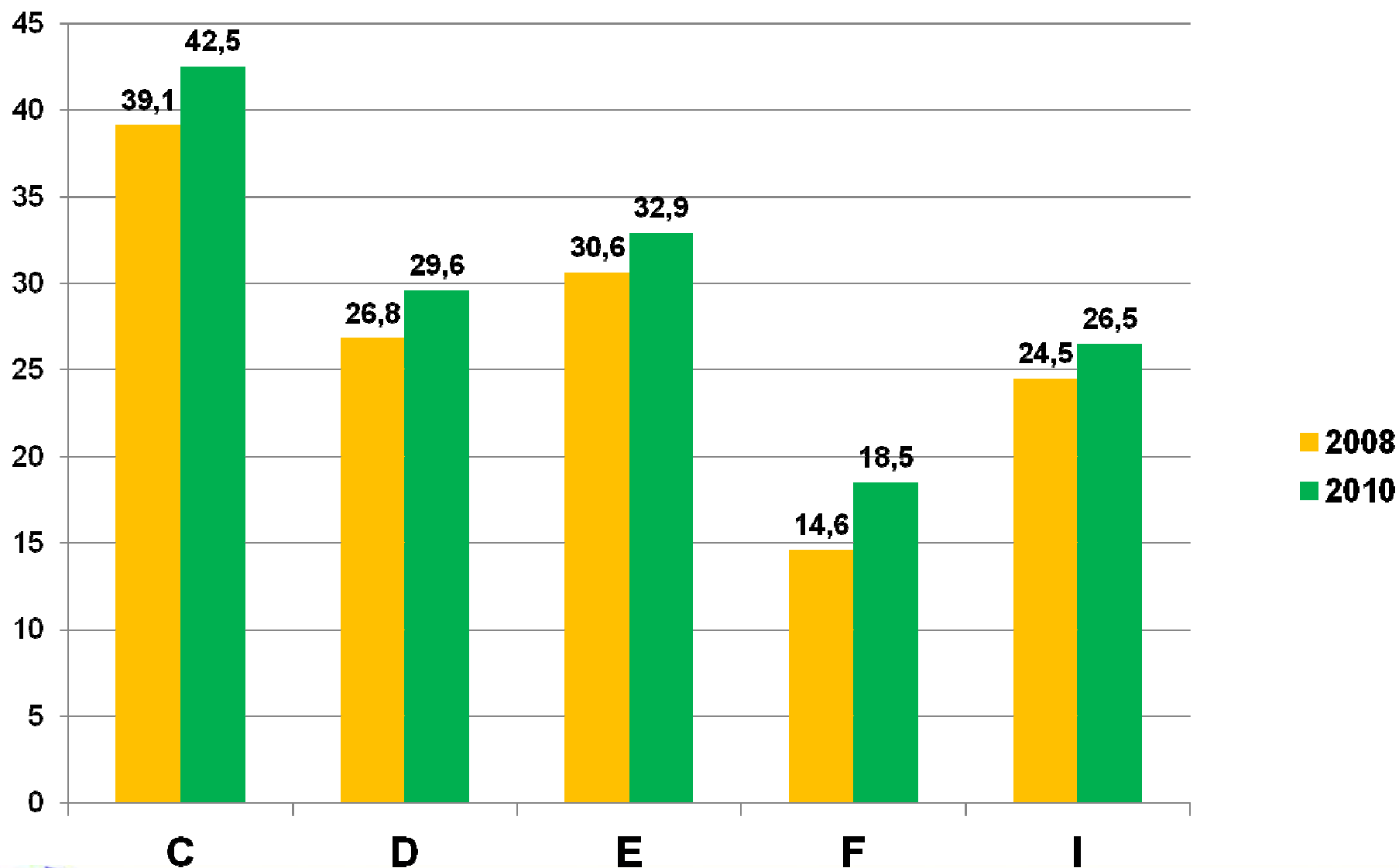
INDUSTRIAL INJURY RATE

(per 1000 employed people)

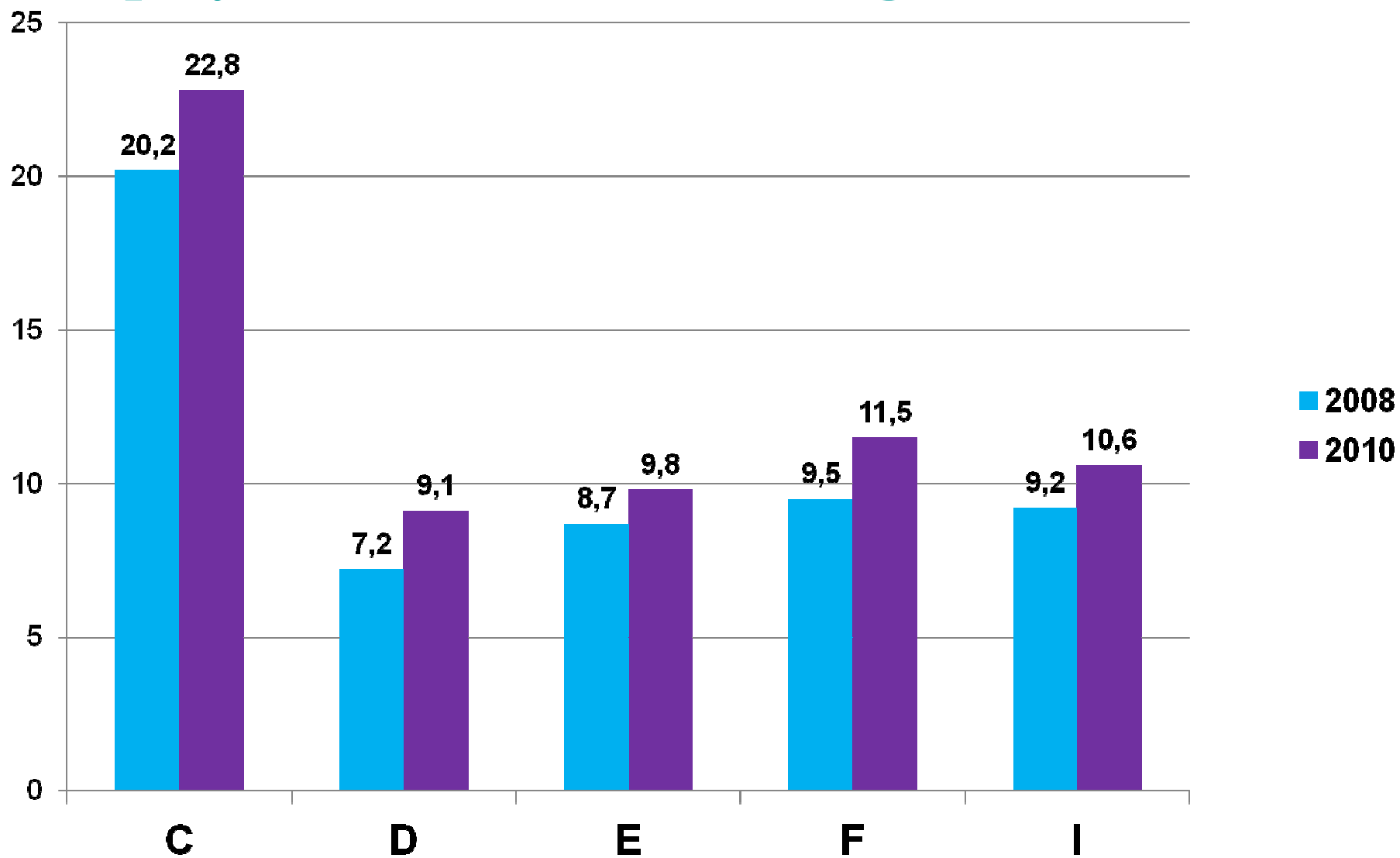
Year	Fatal industrial injury rate	Non-fatal industrial injury rate
2000	0.149	5.0
2003	0.131	3.8
2004	0.129	3.3
2005	0.124	3.0
2006	0.119	2.8
2007	0.124	2.6
2008	0.109	2.4
2009	0.090	2.0
2010	0.094	2.2



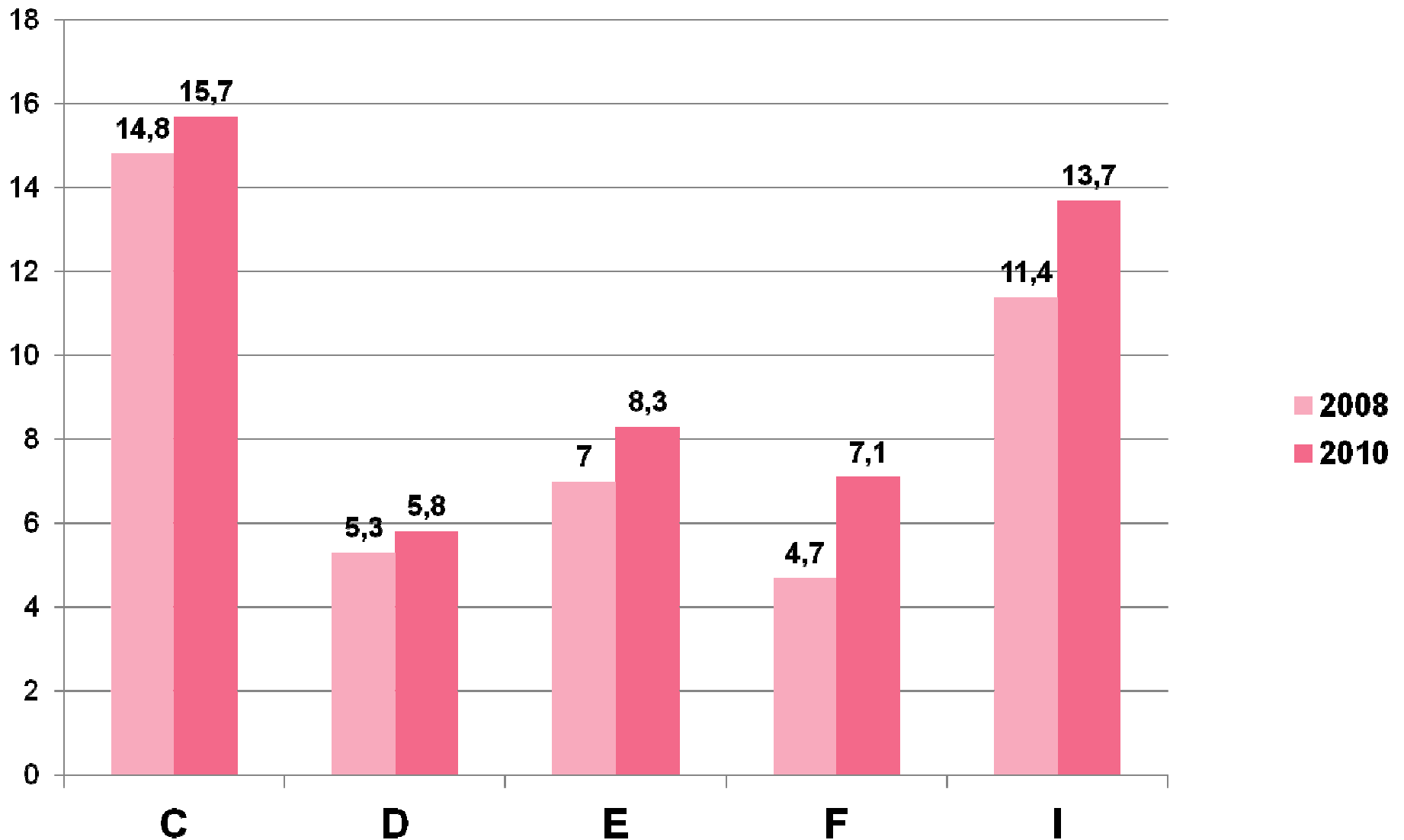
Worked under Influence at Least One Hazardous Labour Conditions, %



Employees in Arduous Working Conditions, %



Employees in Stressed Labour Process, %



CHILD LABOUR



Number and Share of Employed Children Aged 15-17

	2008	2009	2010
Thousand people	256	179	139
% of all children aged 15-17	4.4	3.2	2.5



Employed children aged 15-17: average number of working hours per week, hours

	2008	2009	2010	<u>2010</u> Employees aged 16-18 whose working hours exceed 35 hours per week, %
Total	23.7	19.5	19.4	22.7
men	24.7	20.3	20.4	25.3
women	22.2	18.5	18.0	19.0



INCOME FROM EMPLOYMENT



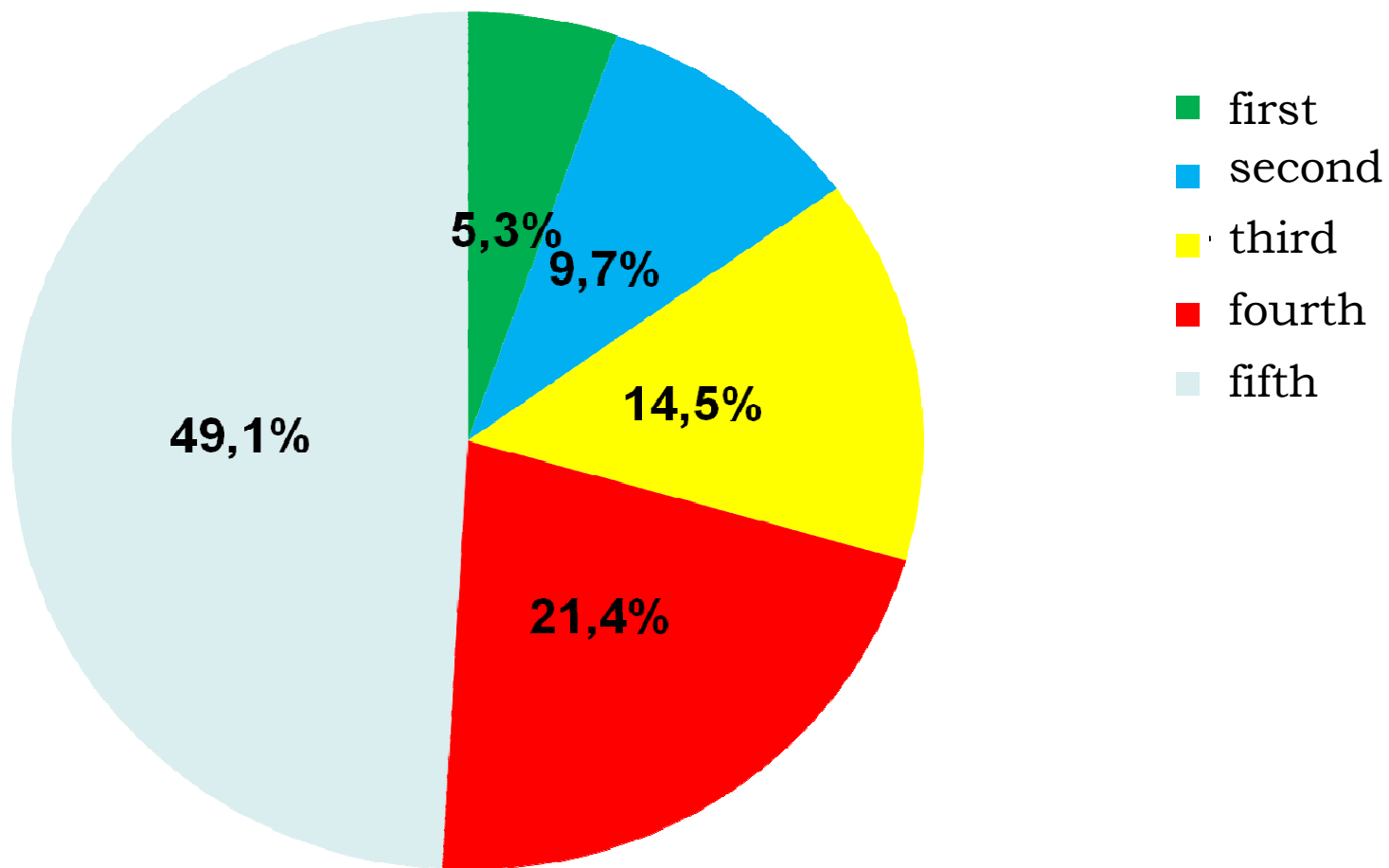
Share of employed with low salary, %

(survey data for April, 2011)

Share of employed with income below 2/3 of median earnings	29.9
Share of employed with income below minimum earnings	1.8



Distribution of earnings by quintiles, %



WORKING HOURS



Share of Employees Working 49 Hours or More per Week, %

2005	2006	2007	2008	2009	2010
4.9	4.5	3.4	3.6	3.5	2.4



Share of Employees Working Less Than 30 Hours per Week, %

2005	2006	2007	2008	2009	2010
6.6	5.6	5.6	6.2	7.3	5.9



Share of Employees Having More Than One Job, %*

2005	2006	2007	2008	2009	2010
4.3	3.8	3.7	4.1	3.9	3.1

* During survey week or during month before survey week



BALANCE OF WORK AND NON-WORKING TIME



Number and Ratio of Employed Women aged 20-49

	Mln. persons		Ratio, %	
	2009	2010	2009	2010
Total	25.2	25.3	100	100
having children under compulsory school age ¹	4.7	4.9	18.5	19.0
Married women	15.2	15.4	100	100
having children under compulsory school age ¹	3.6	3.7	23.8	24.3
Single mothers	4.0	4.0	100	100
having children under compulsory school age ¹	0.9	1.0	23.3	23.6

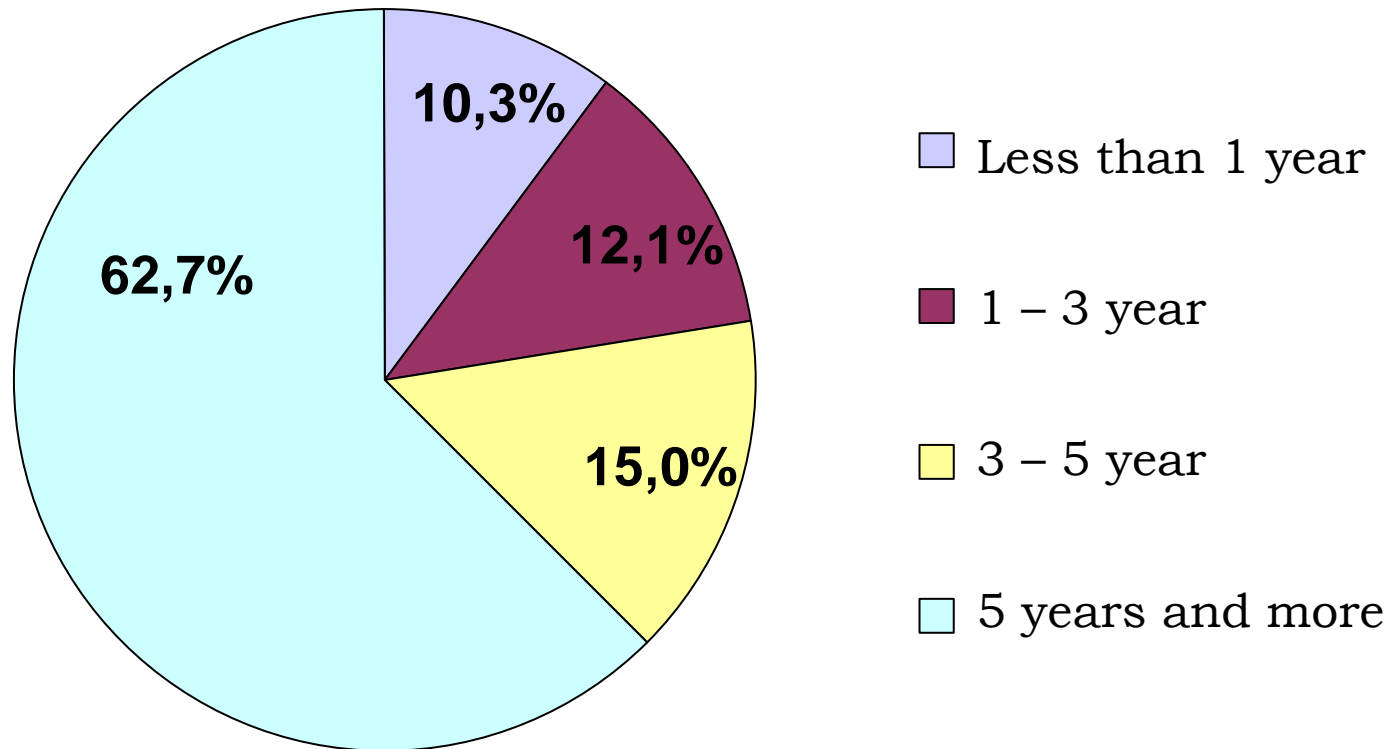
1) Under 6 years old including



SECURITY OF EMPLOYMENT



Employees Aged 25-72 by Duration of Employment in the Establishments in 2010, %



Share of Not-Hired People Registered as Individual Entrepreneurs, %¹⁾

2005	2006	2007	2008	2009	2010
4.0	3.7	3.9	4.3	4.4	4.1

¹⁾ Including farmers.



SKILLS DEVELOPMENT AND TRAINING DURING LIFE



Share of employees who completed their training within 2010

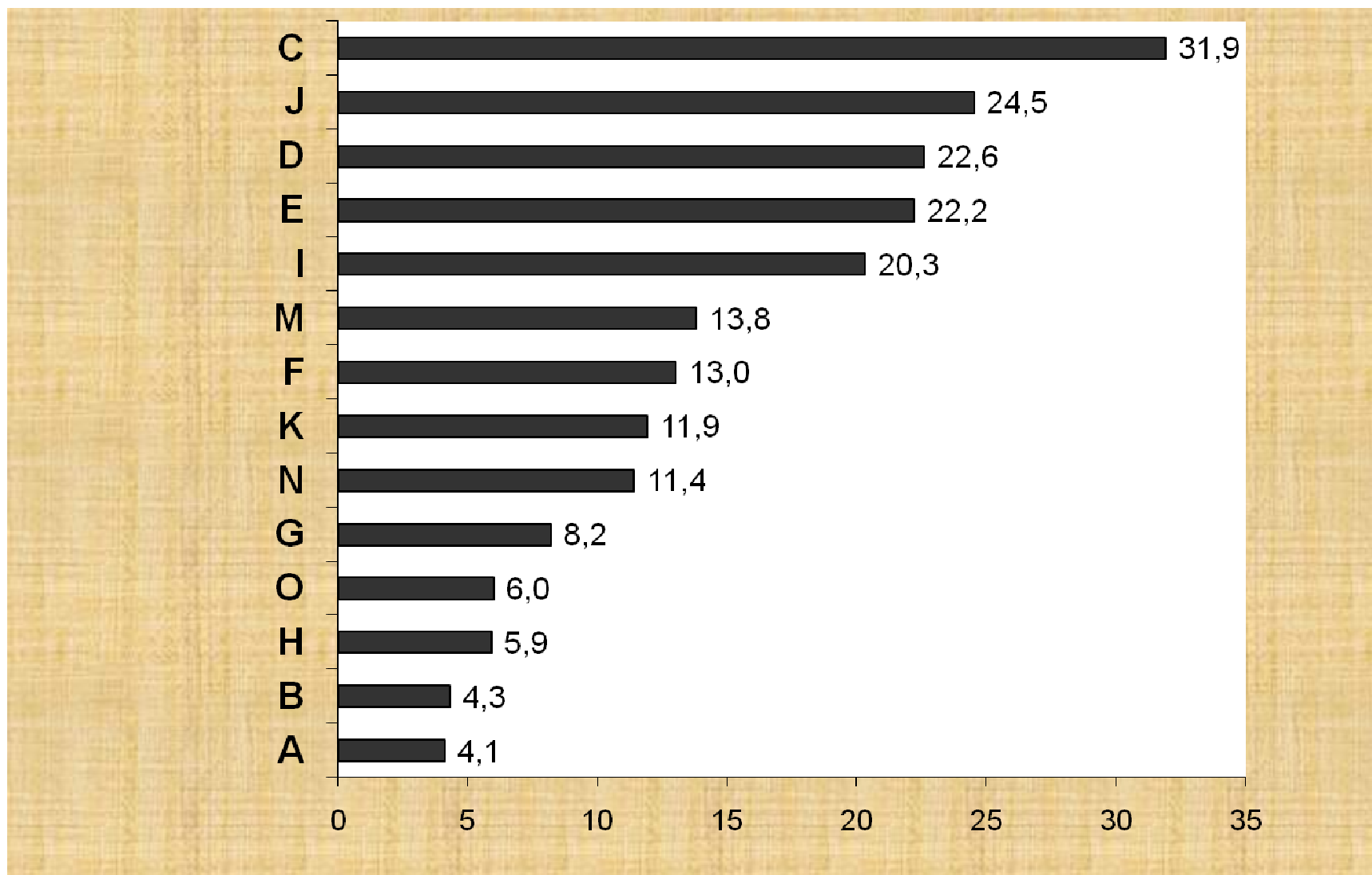
	Number, mln. people	Share of employees in surveyed establishments
Total	5.0	15.8

Types of education (at expenses of establishment):

- ✓ Professional retraining
- ✓ Skills improvement
- ✓ Probation
- ✓ Extra vocational training
- ✓ Courses of intentional learning



By Kinds of Activity, %



**Thank you very much
for your attention!**

