

# Integration of Population Base Statistical Register with International Migration Statistical Register



El futuro  
es de todos

Gobierno  
de Colombia

October / 2019

## Contents

1. Introduction
2. Population Base Statistical Register (DANE, 2019)
3. International Migration Statistical Register
  - Integration of registers
  - Limitations of the methodology
  - Results
4. Conclusions

## Introduction

At this moment Colombia doesn't have a way to determinate international emigration at subnational level, i.e., departmental level.

There are 2 exercises that are developing in the DANE

1. Population Base Statistical Register – PBSR
2. International Migration Statistical Register – IMSR

By the integration of both, now we have the opportunity to know, for the first time, the distribution of international emigration.

It is also important because It is the base to the population projections



## Population Base Statistical Register (DANE, 2019)



## Population Base Statistical Register (DANE, 2019)

### 1. Inventory

Area	Registers
<b>Health</b>	BDUA- Single Database of Health Affiliates – Ministry of Health
	EPS Health Promoting Entities
	SISBEN Beneficiary Selection System for Social Programs - National Planning Department
<b>Education</b>	SIMAT - Integrated Educational Enrollment System – Ministry of Education
	SNIES – National Higher Education Information System
	SIET – Work Education Information System
<b>Births and Deaths</b>	Vital Statistics – DANE
<b>Vaccination</b>	PAI - Expanded Immunization Program – Ministry of Health
<b>Social Security Contributions</b>	PILA Integrated Payments Settlement Form – Ministry of Health
<b>Victims of the armed conflict</b>	RUV – Single Register of Victims - Unit for Victims
<b>Tax registration</b>	RUT – Single Tax Register

Fuente: DANE.

## Population Base Statistical Register (DANE, 2019)

### 2. Define the variables

Variable type	Variable
<b>Identification</b>	Identification Document number
	Type of document
	Complete name
	Birth date
	Sex
<b>Demographics</b>	Birth place
	Civil status
	Kinship
	Date of death
	Age
<b>Location</b>	Department
	Municipality
	Address
	Phone number
	Place of residence
<b>Register</b>	Status
	Provider
	Consistency
	Duplicate marking

Fuente: DANE.

## Population Base Statistical Register (DANE, 2019)

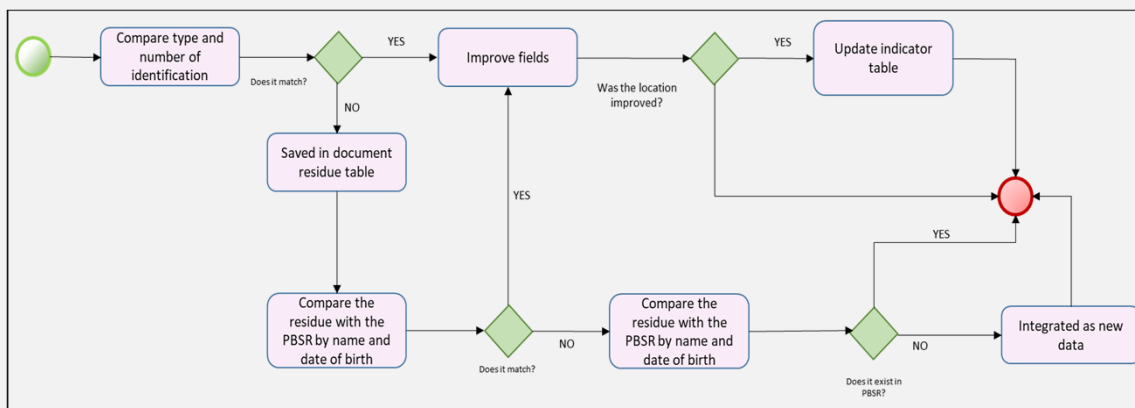
### 3. Standardization and validation of administrative records

1. Standardization: Adapt the definitions of the variables of each administrative record to the standardized definitions of the PBSR.
2. Validation:
  - Inconsistency Analysis: determine if the information in each record is consistent with the person's information
  - Debugging and imputation: amend incorrect information and impute missing information
  - Duplicity analysis: identify duplicates to debug the register

Fuente: DANE.

## Population Base Statistical Register (DANE, 2019)

### 4. Integration and improvement of administrative records



Fuente: DANE.

# International Migration Statistical Register



El futuro  
es de todos

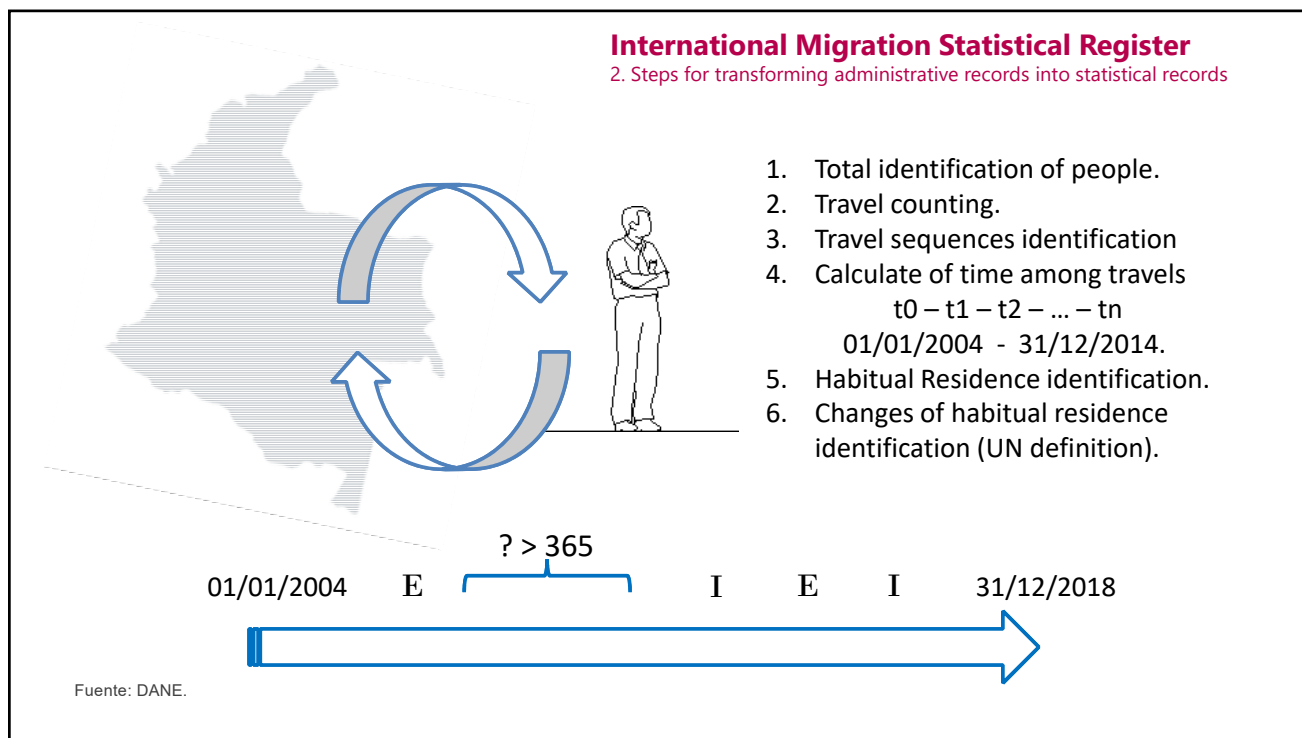
Gobierno  
de Colombia

## International Migration Statistical Register

### 1. Variables in the administrative record

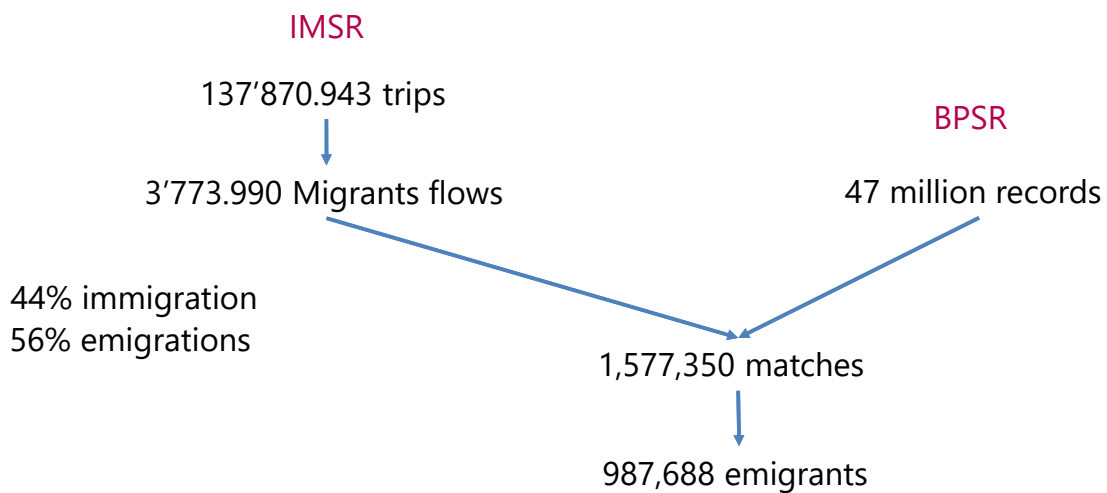
Variable Type	Description of Information
<b>Individual identifier</b>	Type of document
	Id number
<b>Administrative</b>	Document type
	Country issuing passport
	Check Point
	Means of transport
<b>Flow type travel</b>	I: income
	E: outcome
<b>Temporality</b>	Date of trip
<b>Demographics</b>	Sex
	Birthday
	Country of birth
	Traveler's nationality
<b>Geographic</b>	Residence country
	Country Destination / Origin

Fuente: DANE.



## Integration of registers

### Integration of registers

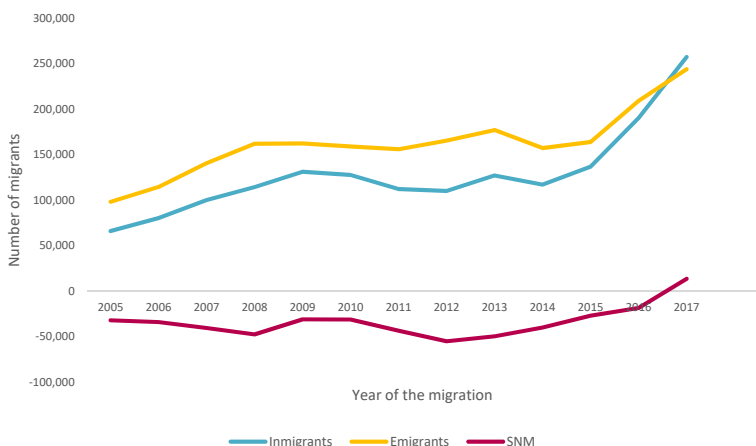


Fuente: DANE.

## Results

**INFORMACIÓN PARA TODOS**

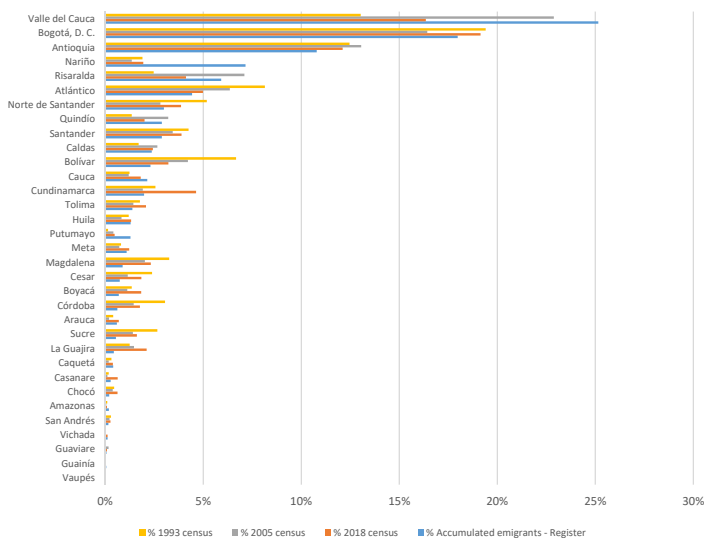
**Total International Migrants and Net Migration**



For the first time in recent Colombian history in 2017 there was a change in the trend of the net migratory balance

**INFORMACIÓN PARA TODOS**

**Comparison between censuses and statistical registers  
Subnational location of emigrants**



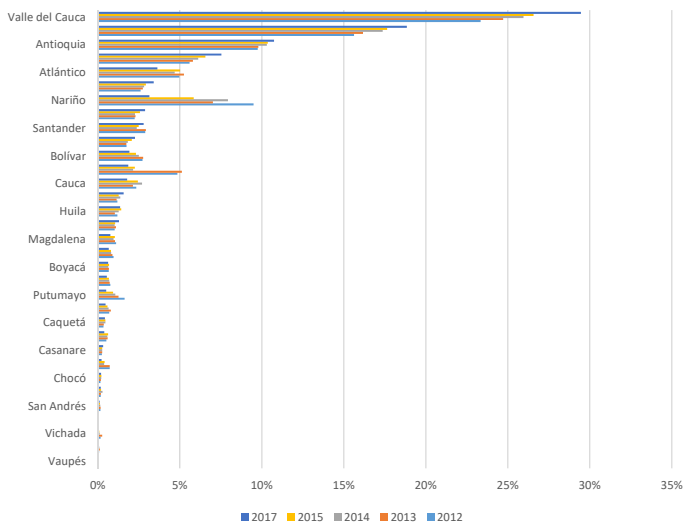
There is a correlation of **0.93** with the distribution of the 2018 CNPV of mothers with children outside Colombia..

For the first time there is the origin of emigration with emigrant information

	Pearson correlation
1993 census	0.8518
2005 census	0.9662
2018 census	0.9321



Last 5 years of Emigrants



In the last years of measurement, concentration of emigration is observed in the same departments

## Conclutions

 INFORMACIÓN PARA TODOS

- Of the total international migrants present in the 3,775,783 international migration statistical register, 1,544,379 records (41%) were matched, of which 978,110 (63%) correspond to emigrations.
- The other objective, perhaps the most important one, was to determine the sub-national origin of international emigration. From the total number of emigrants present in both registries, 958,663 (97%) have information on the residence department.
- The departments that have an emigrant tradition, are very well reflected with the integration of the records
- This finding becomes one of the inputs of which there was not enough information, since the census data may have biased and omitted information

 INFORMACIÓN PARA TODOS

## **Integration of Population Base Statistical Register with International Migration Statistical Register**

**October / 2019**