



# Current international standards on measuring international labour migration from the Guidelines by the 20<sup>th</sup> International Conference of Labour Statisticians (ICLS)

Mustafa Hakki ÖZEL  
ILO, Geneva

UNECE, Works Session on Migration Statistics,  
Geneva, Switzerland, 29-31 October 2019

## Objective /Content

1

ICLS Guidelines concerning statistics of international labour migration

2

Implementation of ICLS Guidelines: *Development of methodologies for the collection of data on international labour migration*

## International labour migration

1

International migrant workers;

- Usual residents
- Non-resident foreign workers practices

2

For-work international migrants;

3

Return international migrant workers.

Paragraph 2

3

## Concepts and definitions - 2/4

### International migrant workers

... is meant to measure current labour attachment of the two groups based on labour attachment & presence criteria.

All persons of working-age who are present in the country of measurement:

1

Usual residents in the labour force

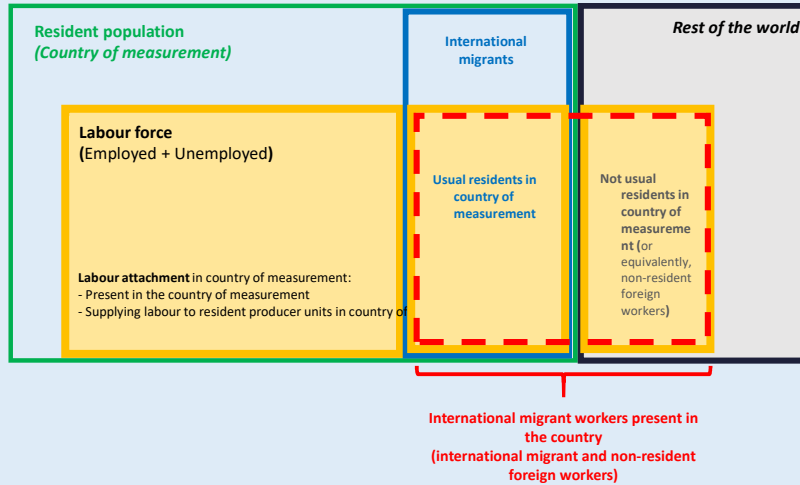
2

Non residents with labour attachment to the country (working or seeking work)

Paragraph 14

4

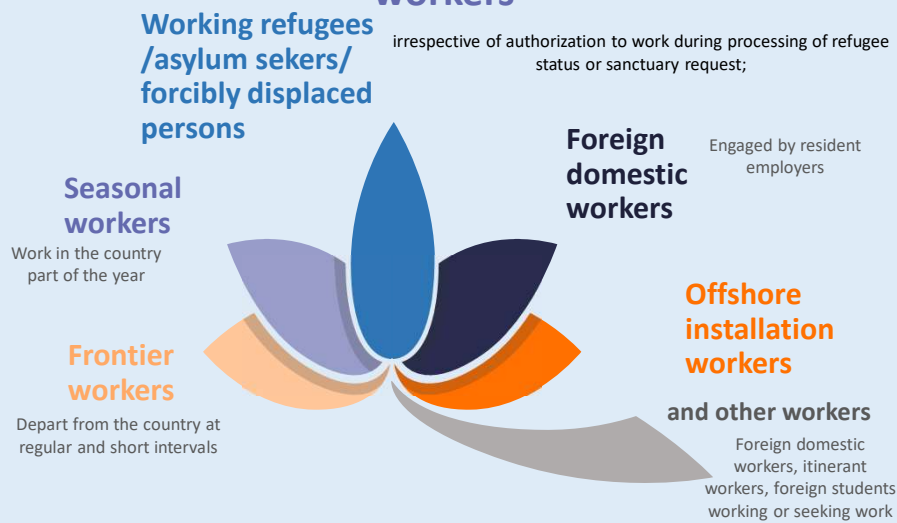
## Measurement framework of international migrant workers



Paragraph 19

5

## Some specific examples of international migrant workers



**EXCLUDED:** Foreign military, diplomatic personal, Call Center Staff  
International travelers on tourism trip (even if worked incidentally)

Paragraph 20

6

## Concepts and definitions - 3/4

### For-work international migrants

... is intended to measure the movements of persons from one country to another for the purpose of undertaking or seeking work

Usual residents and not usual residents who entered the country for the declared purpose work

- ▶ Intention to undertake or seek employment
- ▶ Intention declared at time of entry (official immigration registers, other documents...)

Paragraph 22

7

## Concepts and definitions - 4/4

### Return international migrants

... is intended to provide a basis for measuring the work experience of persons returning after being international migrant workers abroad

All current residents who were **previously international migrant workers** in another country(ies)

- ▶ Irrespective of their current labour force status
- ▶ Include those previously working abroad without being usual resident of the country where they worked

Paragraph 23

8

## Development of methodologies for the collection of data on international labour migration: *A Strategy paper*

### Strategy for development of methodologies

- 1 The review of national sources and country practices concerning ILM
- 2 Development of viable methodologies for each of the main and sub-categories of ILM
- 3 Discussion of the outcomes with a Working Group of Experts
- 4 Country studies to pilot and field test the agreed methodologies in selected countries
- 5 Report 21th ICLS

## Strategy: Country studies

**a**

**14/a:** Lebanon, Jordan Kuwait, Turkey;

**14/b:** Brunei, Iran, Switzerland;

**For-work IM:** Colombia, Kuwait, South Africa;

**Return IMW:** Bangladesh, Moldova, Mexico;

**Citizens or Native born working abroad:** Philippines, Morocco, Tunisia, Venezuela

**b**

Other countries

**c**

Overall framework

11

## Strategy : Country studies – Overall framework

**a**

To review the existing data sources on each element of international labour migration;

**b**

To identify, in collaboration with the national statistical office and relevant national stake-holders, the main categories of international labour migration of particular interest in the country;

**c**

To use the existing data sources, one of them preferably the labour force survey or another suitable national household survey, to make preliminary estimates of the elements of international labour migration specified under (1) and the main categories of international migrant workers identified under (2);

**d**

Where multiple estimates of the main categories of international labour migration may be developed, the different estimates may be reconciled using appropriate procedures, for example, reconciliation tables similar to those developed on estimates of international migrant workers in Brunei Darussalam in the present document;

**e**

Test the new data sources and new methodologies on small-scale and experimental conditions and assess their effectiveness and accuracies;

**f**

Test the new data sources and new methodologies on small-scale and experimental conditions and assess their effectiveness and accuracies;

## Strategy: 21<sup>st</sup> ICLS

a

Methodological guidelines

b

Time- table for major activities

13

**Thank you for your  
attention!**

14