



Migration and Structural Integration in Switzerland - A Longitudinal Perspective

Marcel Heiniger, Federal Statistical Office

UNECE/Eurostat Work Session on Migration Statistics

Geneva, 30-31 October 2017



Outline of Presentation

Longitudinal Migration Database:

- Legal framework
- Construction (utilized data sources)
- Content
- Some preliminary findings (1998 cohort)
- Conclusions and future work





Longitudinal Migration Database

- project funded by the Swiss National Science Foundation
- linking of administrative records to construct longitudinal datasets
- objectives:
 - to follow migratory trajectories of individuals over time
 - to gain insights into the adjustment and settlement experience of migrants
 - to complement existing cross-sectional migration data



Legal Framework

Federal Statistics Act (2006): allows for linking data from different sources at the individual record level for statistical and research purposes

2008: introduction of new social security number -> universal PIN, widely used in administrative registers, can be used in official statistics -> enables data linkage



Utilized Data Sources

FSO's integrated census system established in 2010:

- register survey (extracts from national and local population registers)
- Structural Survey (annual sample survey)

plus

- pre-2010 data from national aliens registers
- Social Security Register
- Register of Unemployment



Content of Database (1)

stock and flow data for all individuals who were present in Switzerland at the end of at least one calendar year over the course of:

- 16 years (1998 to 2014) – foreign nationals
- 4 years (2010 to 2014) – Swiss citizens



Content of Database (2)

- more than 100 individual data files with a common unique (pseudo-) identifier and a wide range of socio-economic-demographic variables
- 248 million individual records
- 11.5 million persons
- 700,000 foreign nationals tracked over the entire 1998-2014 period



Departure Rates Over Time

<https://public.tableau.com/profile/nccr.on.the.move#!/vizhome/LongitudinalAnalyses-DepartureRatesoverTime/Basic>

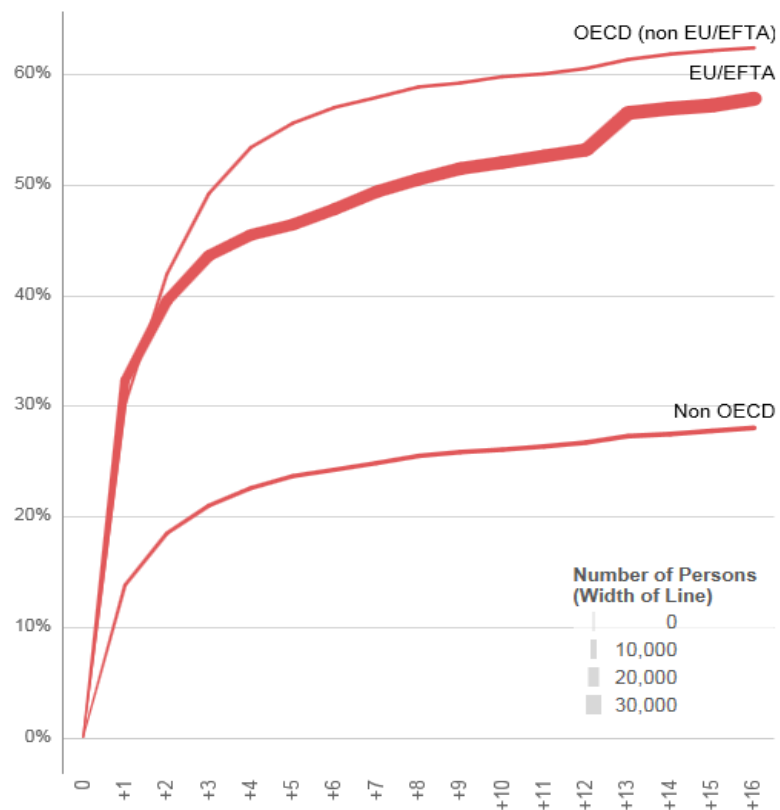




nccr →
on the move

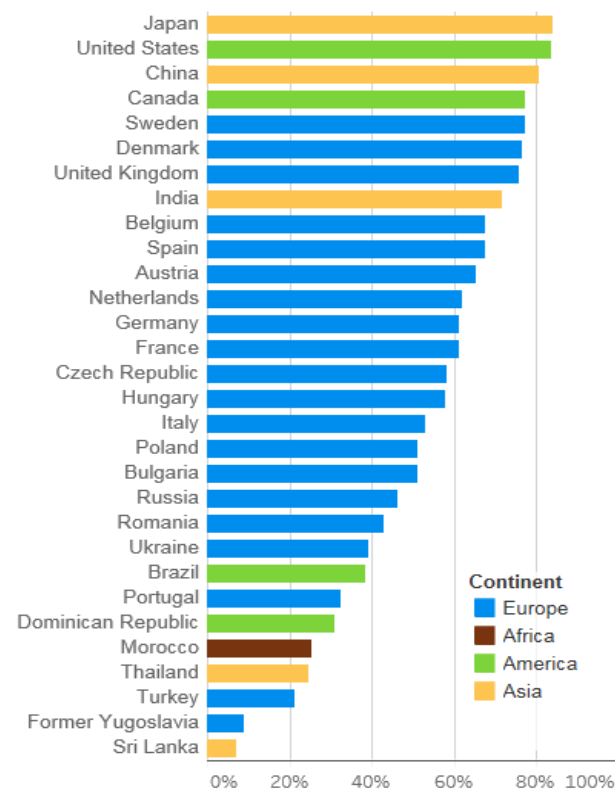
Longitudinal Analyses: Departure Rates over Time

Departures over Time, Cumulated Rates
(Year of Arrival 1998)



© nccr – on the move / Sources: SFSO / SEM (CAR, CEMIS, STATPOP)

Cumulated Departure Rate after
15 Years (Main Countries of Origin)



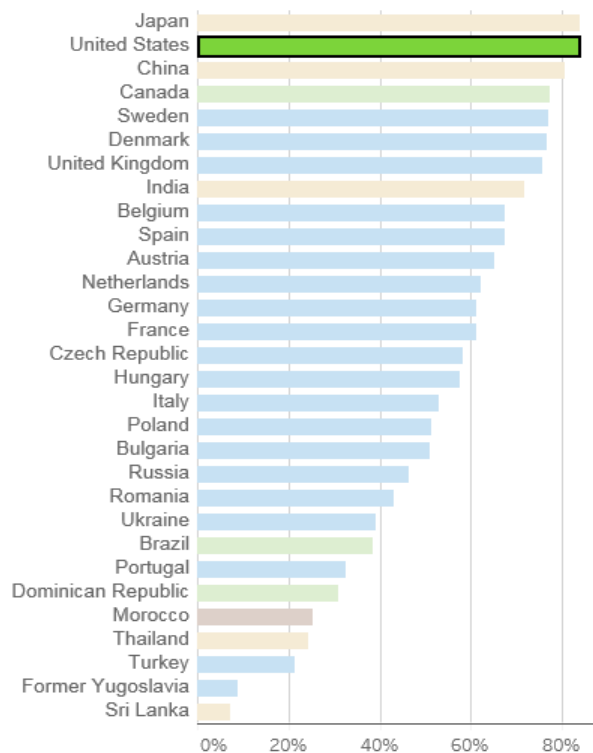
Main countries of origin are selected according to the number of migrants who entered Switzerland in 1998



nccr →
on the move

Longitudinal Analyses: Departure Rates over Time

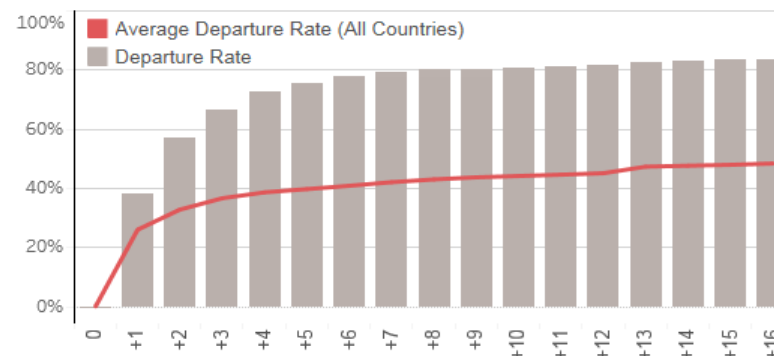
Cumulated Departure Rate after 15 Years (Main Countries of Origin)



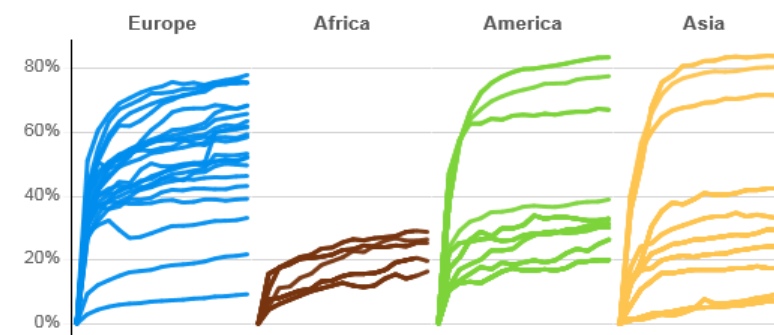
Main countries of origin are selected according to the number of migrants who entered Switzerland in 1998.

© nccr – on the move / Sources: SFSO / SEM (CAR, CEMIS, STATPOP)

Departure over Time, Cumulated Rates (Year of Arrival 1998), United States



Departure over Time, Cumulated Rates (Year of Arrival 1998)



Countries are displayed only when at least 100 citizens who arrived in 1998 are still in Switzerland after 15 years.



Naturalization Rates Over Time

<https://public.tableau.com/profile/nccr.on.the.move#!/vizhome/LongitudinalAnalyses-NaturalizationRatesoverTime/Basic>

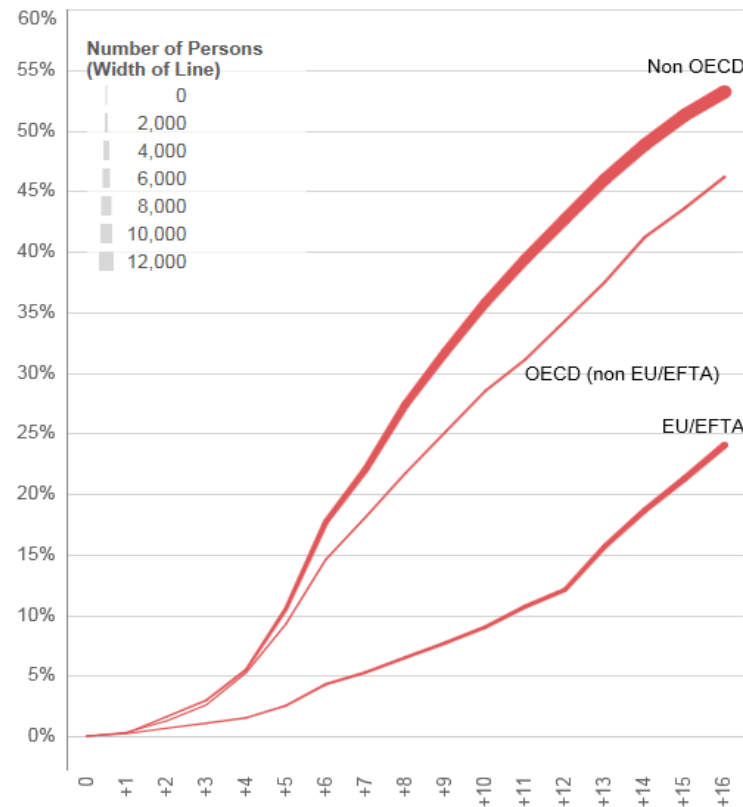




nccr →
on the move

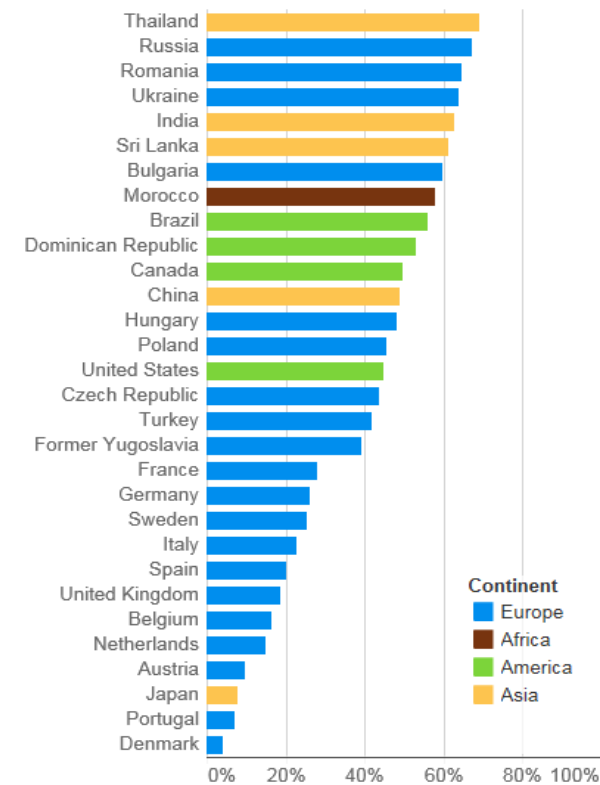
Longitudinal Analyses: Naturalization Rates over Time

Naturalization over Time, Cumulated Rates
(Year of Arrival 1998)



© nccr – on the move / Sources: SFSO / SEM (CAR, CEMIS, STATPOP)

Cumulated Naturalization Rate after 15 Years (Main Countries of Origin)



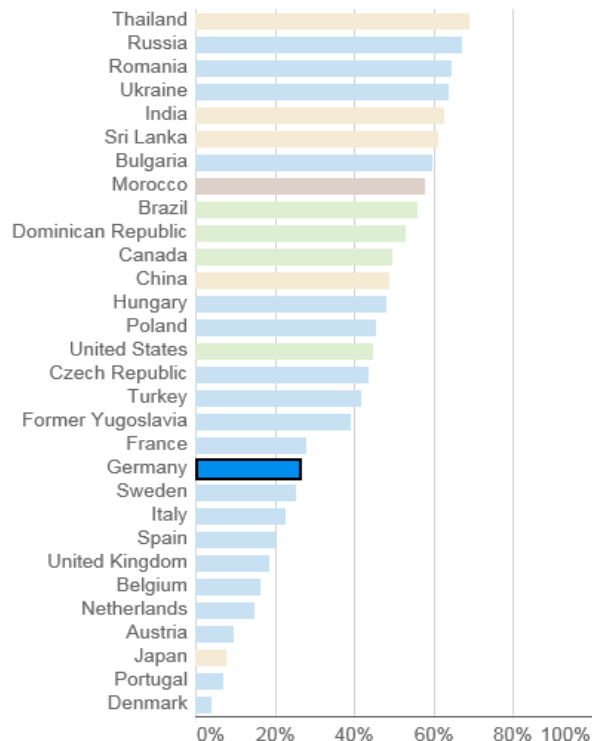
Main countries of origin are selected according to the number of migrants who entered Switzerland in 1998



nccr →
on the move

Longitudinal Analyses: Naturalization Rates over Time

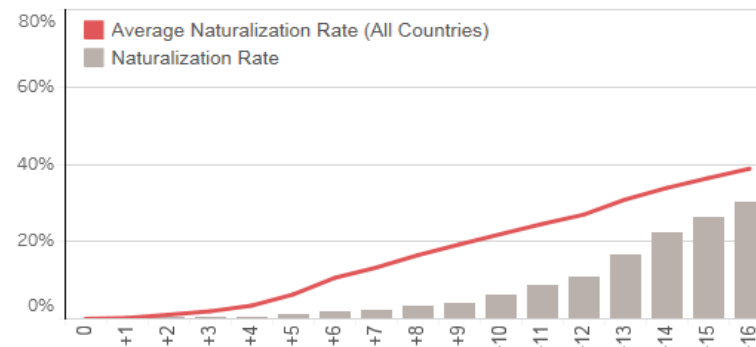
Cumulated Naturalization Rate after 15 Years (Main Countries of Origin)



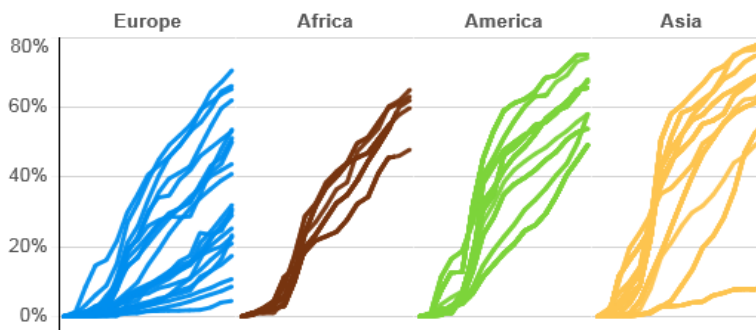
Main countries of origin are selected according to the number of migrants who entered Switzerland in 1998.

© nccr – on the move / Sources: SFSO / SEM (CAR, CEMIS, STATPOP)

Naturalization over Time, Cumulated Rates (Year of Arrival 1998), Germany



Naturalization over Time, Cumulated Rates (Year of Arrival 1998)



Countries are displayed only when at least 100 citizens who arrived in 1998 are still in Switzerland after 15 years.



Status Changes Over Time

<https://public.tableau.com/profile/nccr.on.the.move#!/vizhome/LongitudinalAnalyses-StatusChangesoverTime/Basic>

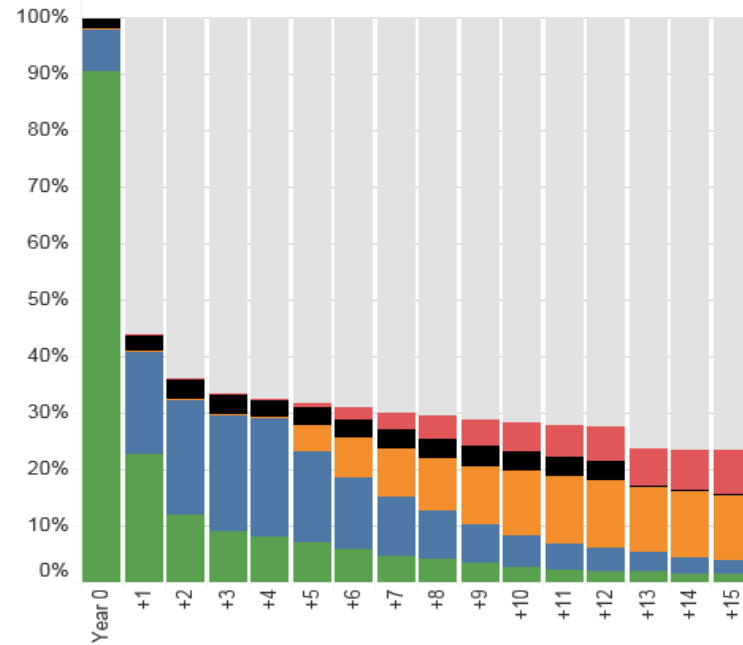




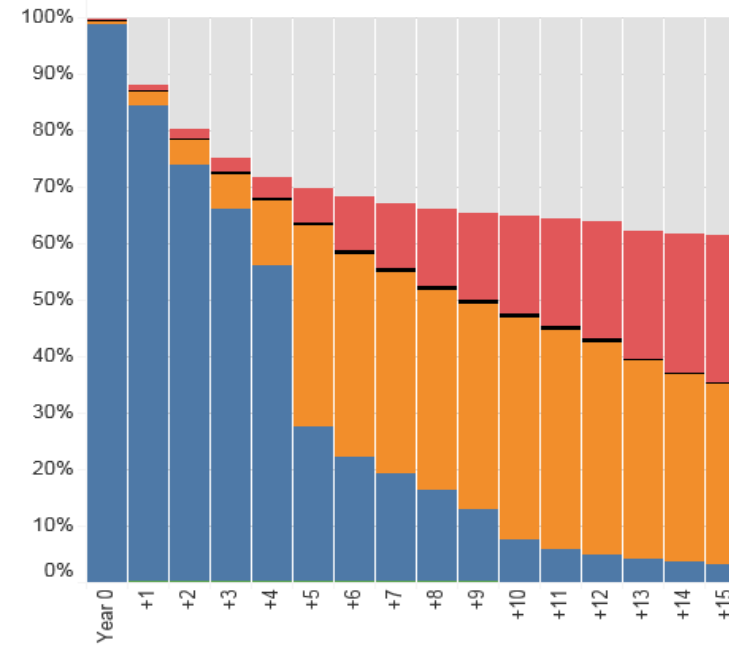
nccr →
on the move

Longitudinal Analyses: Status Changes over Time

Status Change over Time: Migrants Who Arrived in 1998 with a Short Term (L) Permit



Status Change over Time: Migrants Who Arrived in 1998 with a Residence (B) permit



- Return / Onward
- Naturalization
- Other
- Permanent Residence (C)
- Residence (B)
- Short Term (L)

© nccr – on the move / Sources: SFSO / SEM (CAR, CEMIS, STATPOP)



nccr →
on the move

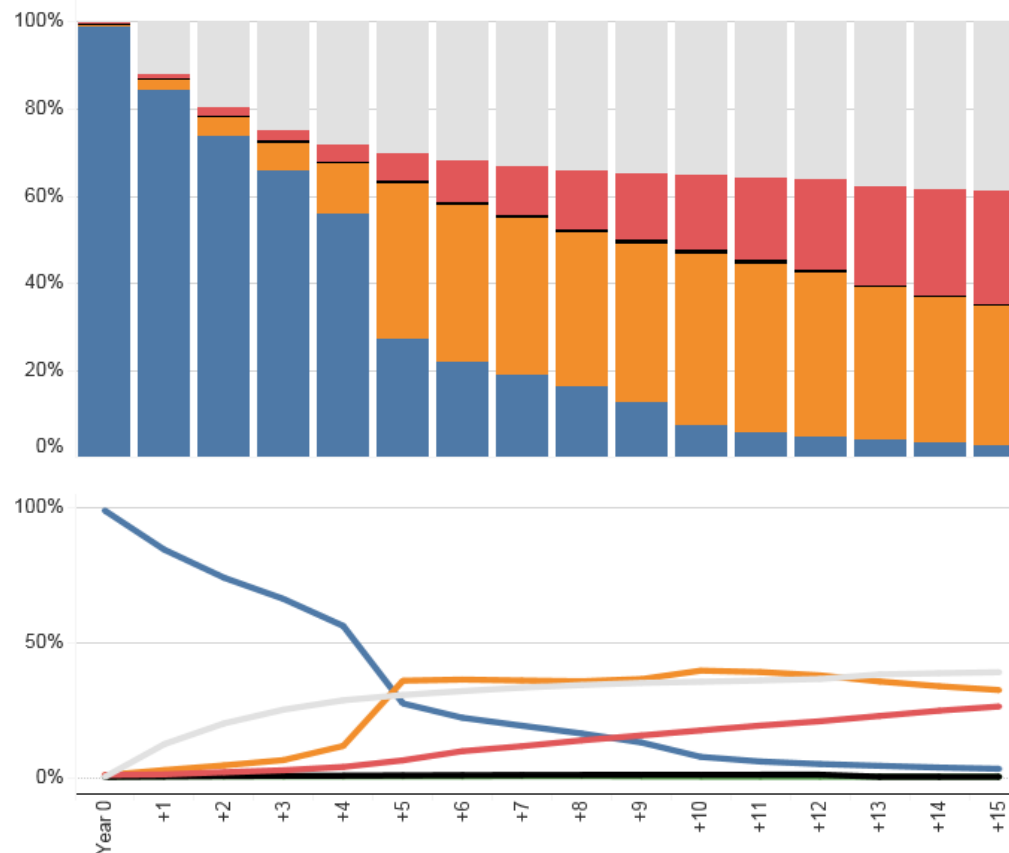
Longitudinal Analyses: Status Changes over Time

Selection Parameters

- Arrival Year Initial Status
- 1998 Residence (B)
 - 2003 Short Term (L)

- Return / Onward
- Naturalization
- Other
- Permanent Residence (C)
- Residence (B)
- Short Term (L)

Status Changes, Initial Residence (B) Permit, Arrival in 1998





Conclusions and Future Work (1)

- better use of the potential of different existing data sources (data integration)
- longitudinal statistical indicators and key data about migrant cohorts will complement cross-sectional measurements and thus provide further insights into migration flows and changes in migrant conditions over time
- good example of a close collaboration between academia and NSI



Conclusions and Future Work (2)

- work in progress; first data on labor market outcomes, wages and level of educational attainment of migrants in 2018
- no “one-time study”; longitudinal database will be transferred to FSO, updated annually and be used in official migration statistics
- empirical database for the study of new/emerging types of migration (e.g. circular migration)
- contributes to the production of high quality and timely migration data that address the various aspects and the complexity of international migration today



Thank you for your attention

Additional information:

Federal Statistical Office, Demography and Migration Section

e-Mail: info.dem@bfs.admin.ch