



Statistics Sweden

Statistiska centralbyrån

Register for mapping circular migration

Tomas Johansson
Statistics Sweden



Introduction

- Circular migration is often seen as a win-win-win proposition, providing gains to countries of both origin and destination, as well as to the migrants themselves

Introduction

- Swedish Parliamentary Committee (Committee for circular migration and development)
 - 2009 – 2011
 - Examine circular migration and development
 - Considered that international mobility should be encouraged
 - Considered that further knowledge about global patterns of movement is needed
 - SOU 2010:40 (Mapping of circular migration)
 - SOU 2011:28 (Proposals)
- Mapping by using data from Statistics Sweden
 - Definition:
A person that in migration purpose had crossed the Swedish border at least twice during the period 1969 – 2009.

New mapping in 2014

- Statistics Sweden, in collaboration with the Swedish Migration Board, made a new mapping study of statistics on migration (2014)
 - Existing statistics
 - Registers
 - Other sources
 - Remittances
 - Proposals
 - Personal identification numbers on short term migrants
 - A new migration register
 - Intention to migrate for one year or more
 - (Short term migrants 3 – 12 months)

Mapping circular migration

- In the budget bill for 2016, the Swedish Government allocated funds to Statistics Sweden to produce yearly statistics on circular migration

Swedish register system

- Personal identification number (PIN) is used as a identifier
 - Total population register
 - Education register
 - Income register
 - Including persons with individual coordination numbers
 - Occupation registers
 - And more

Personal identification numbers

- Since 1947 has every person registered as living in Sweden a Personal identification number (PIN)
 - New-born children
 - Immigrants which intent to stay at least 12 months
 - (YY)YYMMDD-XXXY
 - The PIN is a life-long companion
- The PIN is widely used both in the public and private sector
- One big exception
 - Asylum-seekers

Total population register

- Introduced in 1968
 - Total population year $t-1$
 - + Births
 - + Immigration
 - - Deaths
 - - Emigration
 - (+/- internal migration)
 - (Citizenship, marital status changes and more)
 - = Total population year t

Available data material

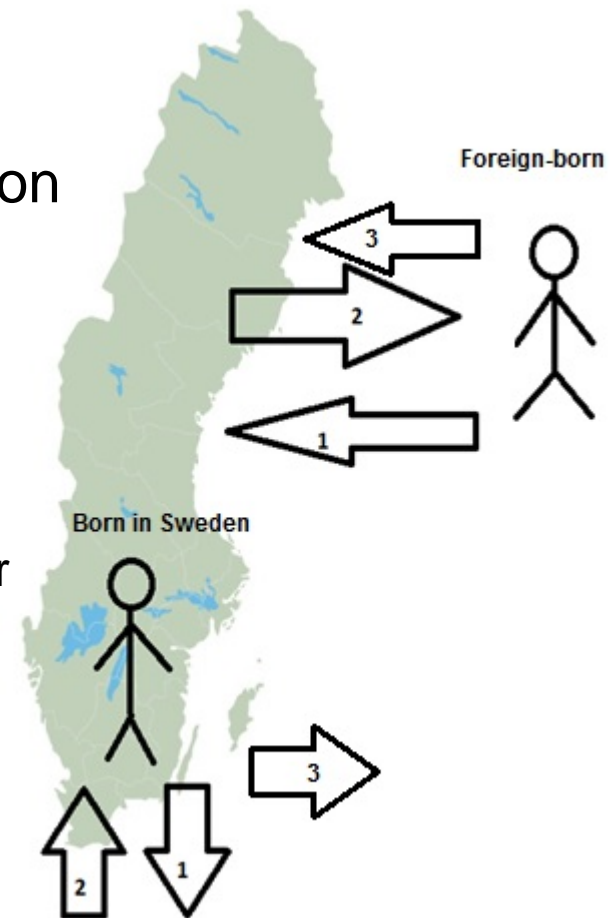
- Historic Population Register (HPR)
 - Period January 1, 1969 – December 31, 2015
 - Births, live births and stillborns
 - Deaths
 - Immigrations
 - Emigrations
 - Migrations within Sweden
 - Changes in civil status
 - Changes in citizenship

Available data material

- Historic Population Register (HPR)
 - Period January 1, 1969 – December 31, 2015
 - Births, live births and stillborns
 - Deaths
 - **Immigrations**
 - **Emigrations**
 - Migrations within Sweden
 - Changes in civil status
 - Changes in citizenship
 - Includes dates of events

Some preliminary statistics

- A person with 3 registered migrations 1969 – 2014
 - The statistics is dependent on national registration
 - persons with the intention to live in Sweden for a year or more shall be registered
 - persons with the intention to live outside Sweden for a year or more shall be deregistered

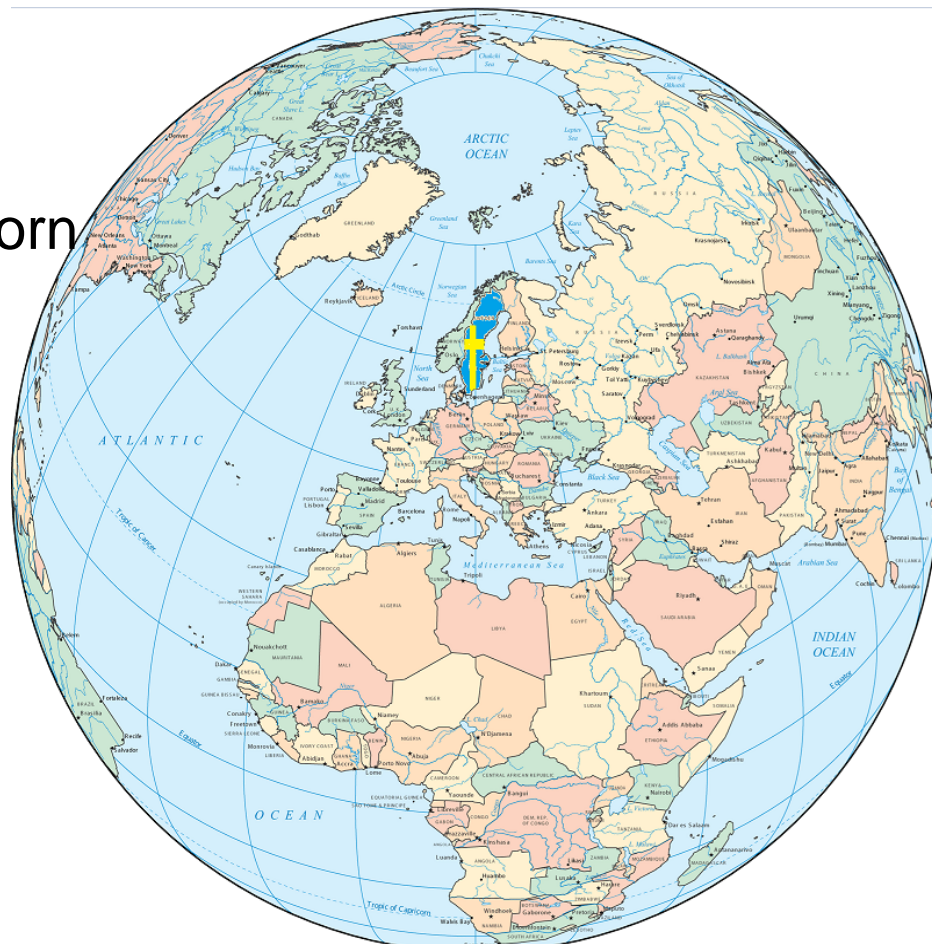


Some preliminary statistics

- Persons that during the period 1969-2014 has met the conditions to qualify as circular migrants
 - Year of immigration and emigration,
 - first and last migration,
 - region of birth,
 - age,
 - gender,
 - total number of migrations
 - region of origin/destination
 - and more..

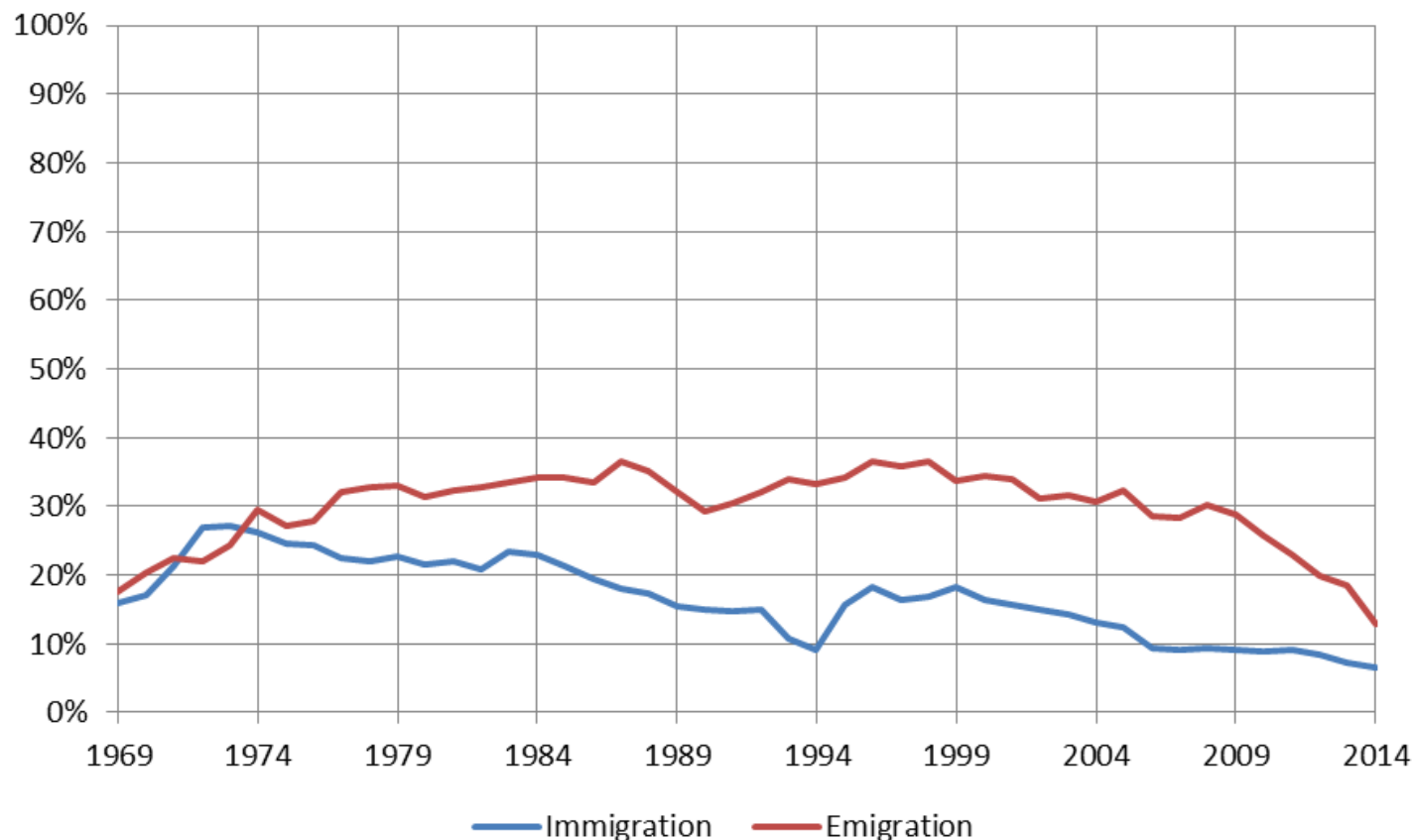
Some preliminary statistics

- Population 2015
 - 9 851 017
 - 17,0 % foreign born
- Immigrants 2015
 - 134 240
- Emigrants 2015
 - 55 830



Most migrations are not circular

- Foreign-born circular migrants share of all foreign-born migrations



Mainly people born in the Nordic countries

- Number of circular migrants and migrations by sex and continent of birth 1969-2014

Region of birth	Number of persons		Number of migrations		Number of persons total	Number of migrations total
	Men	Women	Men	Women		
Africa	5 469	3 250	19 822	11 393	8 719	31 215
Asia	12 773	10 854	45 140	37 537	23 627	82 677
EU28 except nordic	15 597	10 794	56 504	38 256	26 391	94 760
North America	2 951	2 463	10 782	8 998	5 414	19 780
Nordic countries	40 920	30 391	169 544	121 198	71 311	290 742
Oceania	634	406	2 320	1 529	1 040	3 849
Rest of Europe	6 374	4 931	22 295	16 926	11 305	39 221
Sweden	40 107	39 137	157 002	148 964	79 244	305 966
South America	4 335	4 186	15 638	14 917	8 521	30 555
Other	514	486	1 856	1 686	1 000	3 542
Total	129 674	106 898	500 903	401 404	236 572	902 307

Mainly people born in the Nordic countries

- Number of circular migrants and migrations by sex and continent of birth 1969-2014

Region of birth	Number of persons		Number of migrations		Number of persons total	Number of migrations total
	Men	Women	Men	Women		
Africa	5 469	3 250	19 822	11 393	8 719	31 215
Asia	12 773	10 854	45 140	37 537	23 627	82 677
EU28 except nordic	15 597	10 794	56 504	38 256	26 391	94 760
North America	2 951	2 463	10 782	8 998	5 414	19 780
Nordic countries	40 920	30 391	169 544	121 198	71 311	290 742
Oceania	634	406	2 320	1 529	1 040	3 849
Rest of Europe	6 374	4 931	22 295	16 926	11 305	39 221
Sweden	40 107	39 137	157 002	148 964	79 244	305 966
South America	4 335	4 186	15 638	14 917	8 521	30 555
Other	514	486	1 856	1 686	1 000	3 542
Total	129 674	106 898	500 903	401 404	236 572	902 307

Mainly people born in the Nordic countries

- Number of circular migrants and migrations by sex and continent of birth 1969-2014

Region of birth	Number of persons		Number of migrations		Number of persons total	Number of migrations total
	Men	Women	Men	Women		
Africa	5 469	3 250	19 822	11 393	8 719	31 215
Asia	12 773	10 854	45 140	37 537	23 627	82 677
EU28 except nordic	15 597	10 794	56 504	38 256	26 391	94 760
North America	2 951	2 463	10 782	8 998	5 414	19 780
Nordic countries	40 920	30 391	169 544	121 198	71 311	290 742
Oceania	634	406	2 320	1 529	1 040	3 849
Rest of Europe	6 374	4 931	22 295	16 926	11 305	39 221
Sweden	40 107	39 137	157 002	148 964	79 244	305 966
South America	4 335	4 186	15 638	14 917	8 521	30 555
Other	514	486	1 856	1 686	1 000	3 542
Total	129 674	106 898	500 903	401 404	236 572	902 307

About 55 percent are men

Mainly people born in the Nordic countries

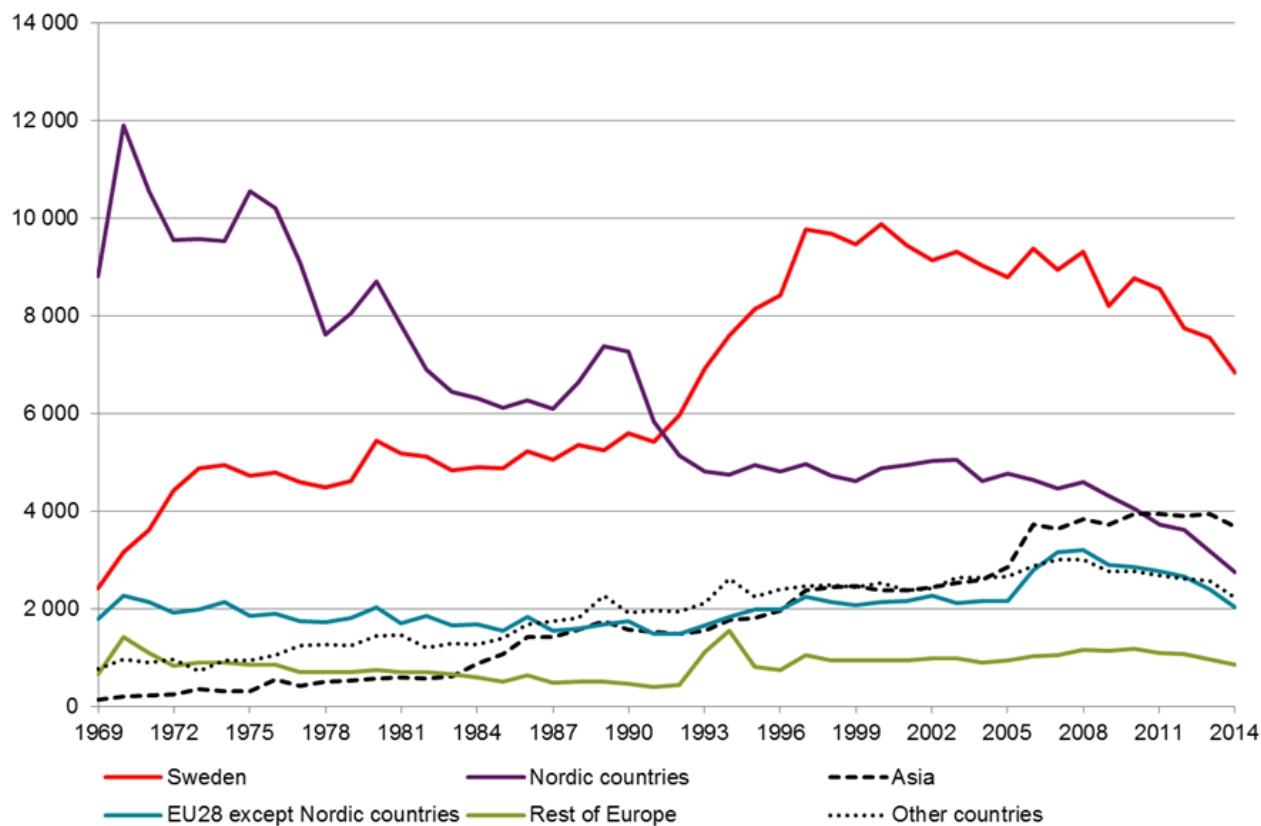
- Number of circular migrants and migrations by sex and continent of birth 1969-2014

Region of birth	Number of persons		Number of migrations		Number of persons total	Number of migrations total
	Men	Women	Men	Women		
Africa	5 469	3 250	19 822	11 393	8 719	31 215
Asia	12 773	10 854	45 140	37 537	23 627	82 677
EU28 except nordic	15 597	10 794	56 504	38 256	26 391	94 760
North America	2 951	2 463	10 782	8 998	5 414	19 780
Nordic countries	40 920	30 391	169 544	121 198	71 311	290 742
Oceania	634	406	2 320	1 529	1 040	3 849
Rest of Europe	6 374	4 931	22 295	16 926	11 305	39 221
Sweden	40 107	39 137	157 002	148 964	79 244	305 966
South America	4 335	4 186	15 638	14 917	8 521	30 555
Other	514	486	1 856	1 686	1 000	3 542
Total	129 674	106 898	500 903	401 404	236 572	902 307

About 65 % of migrants and migrations

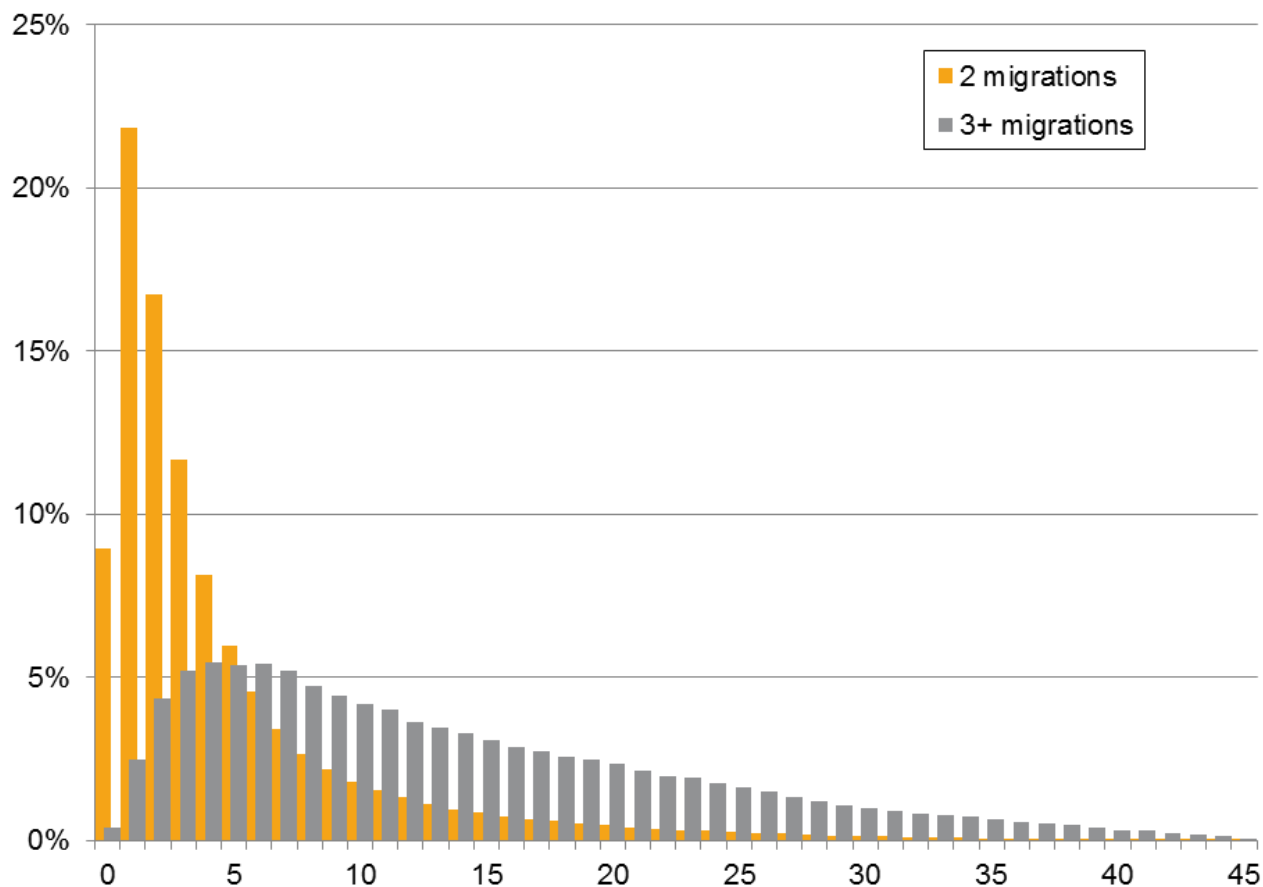
Globalization has made its mark

- Number of circular migrations by continent of birth and year



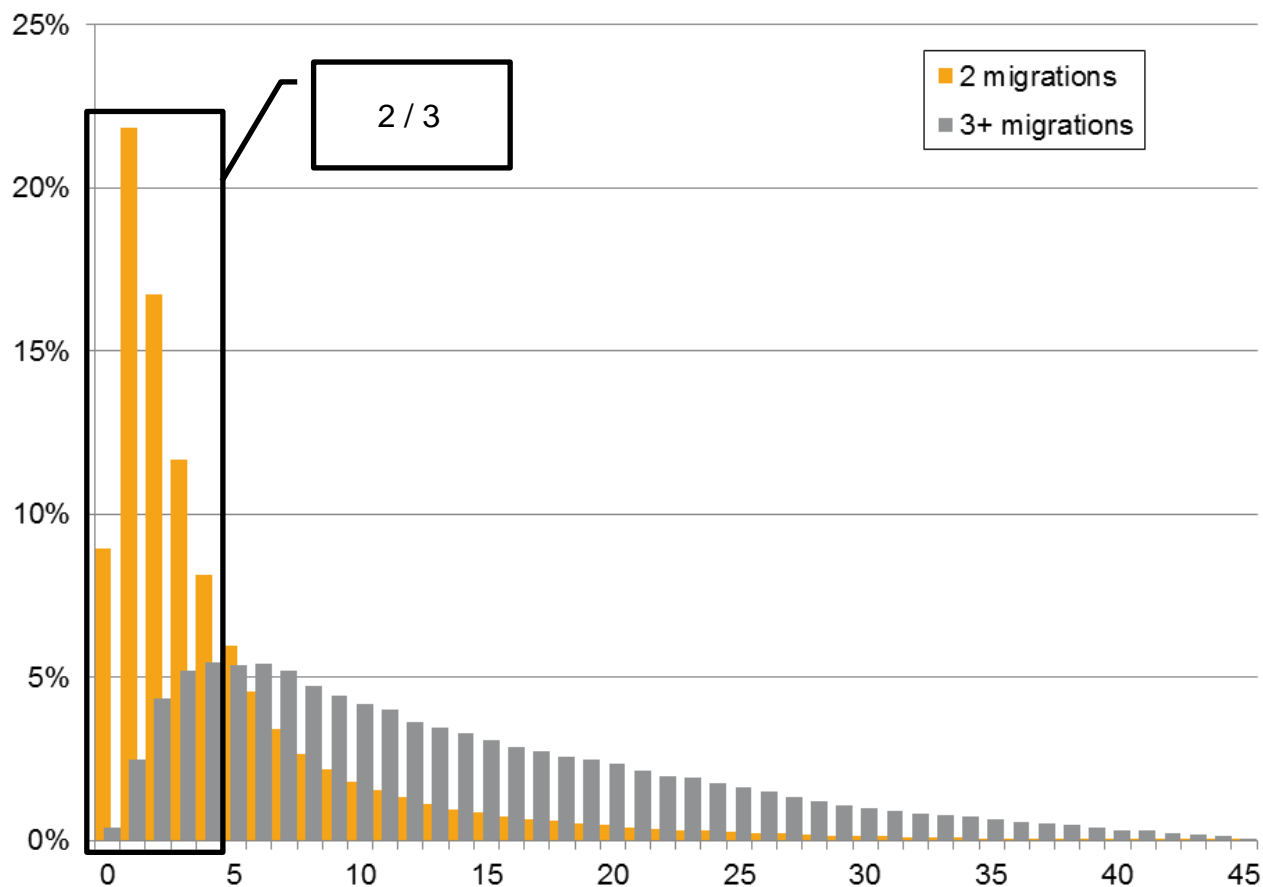
Time between first and last migration

- Migrants by time between first and last migration, %



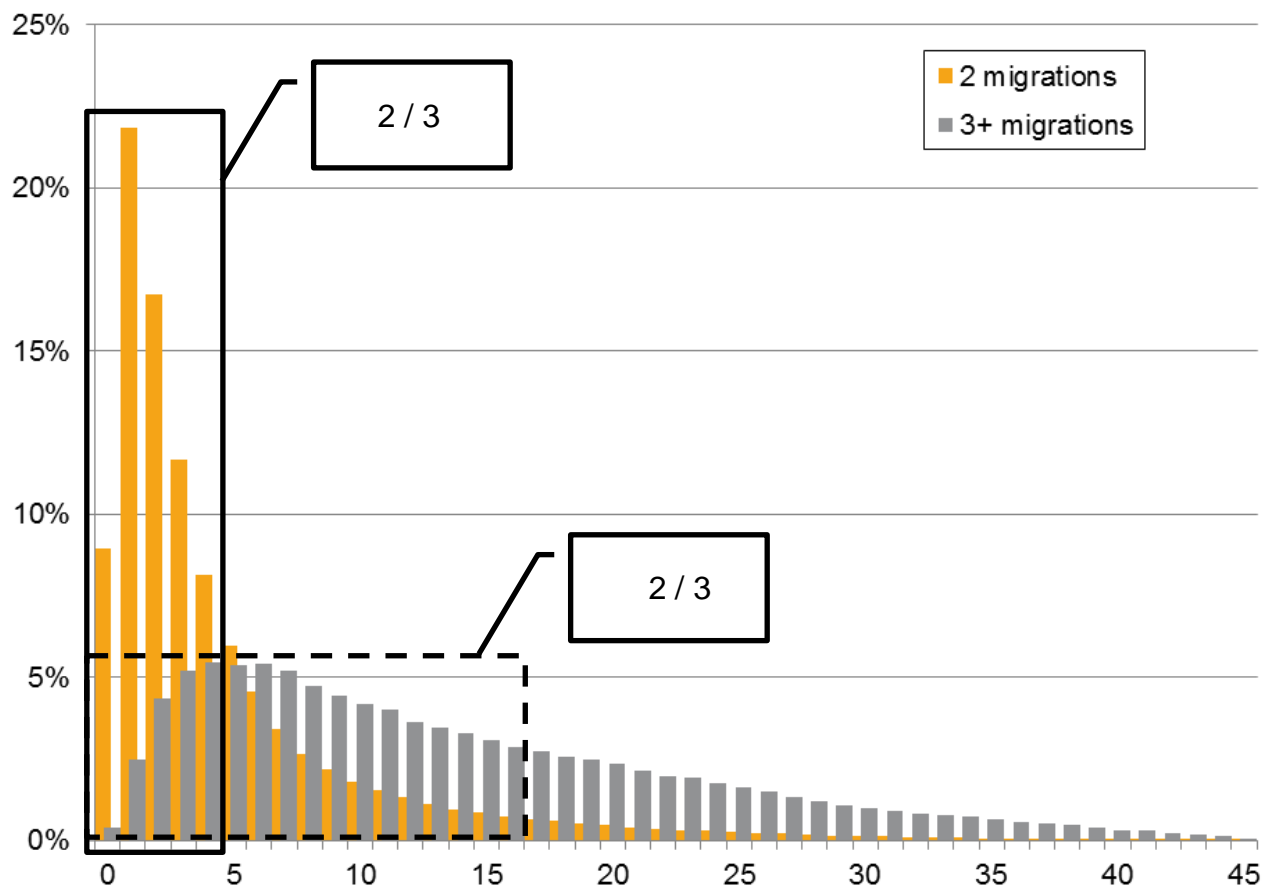
Time between first and last migration

- Migrants by time between first and last migration, %



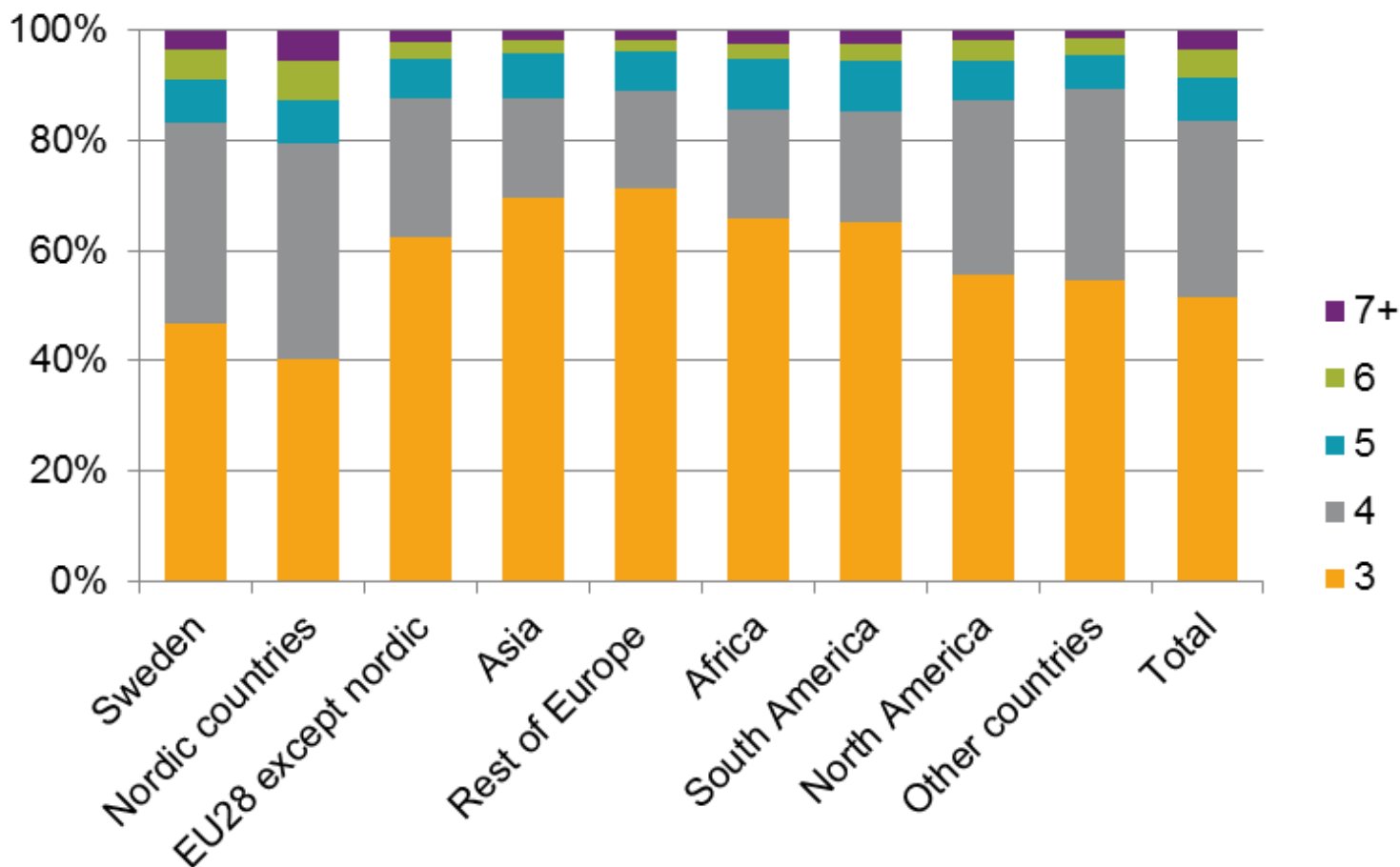
Time between first and last migration

- Migrants by time between first and last migration, %



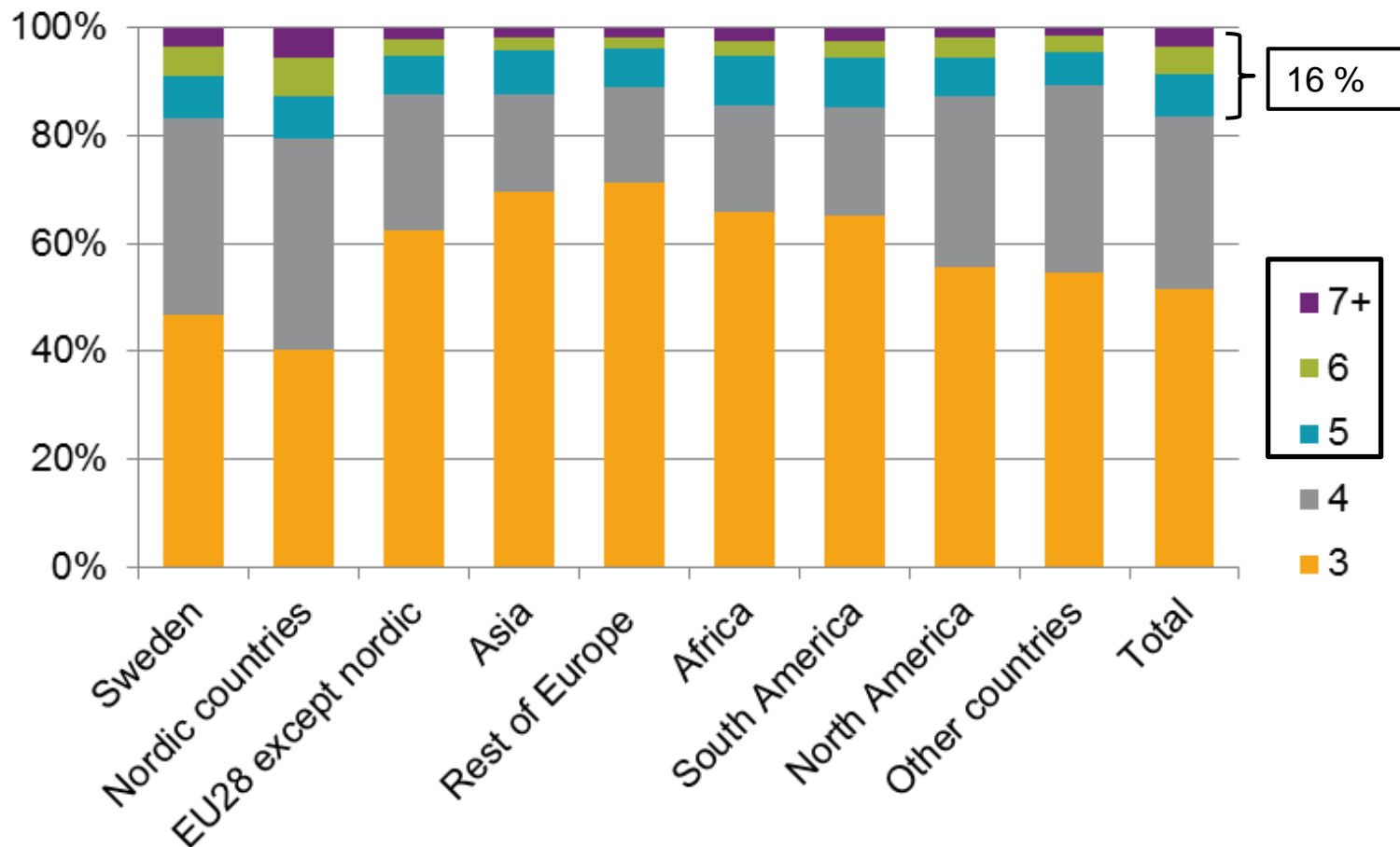
Usually few migrations

- Circular migrants by region of birth and number of migrations, %



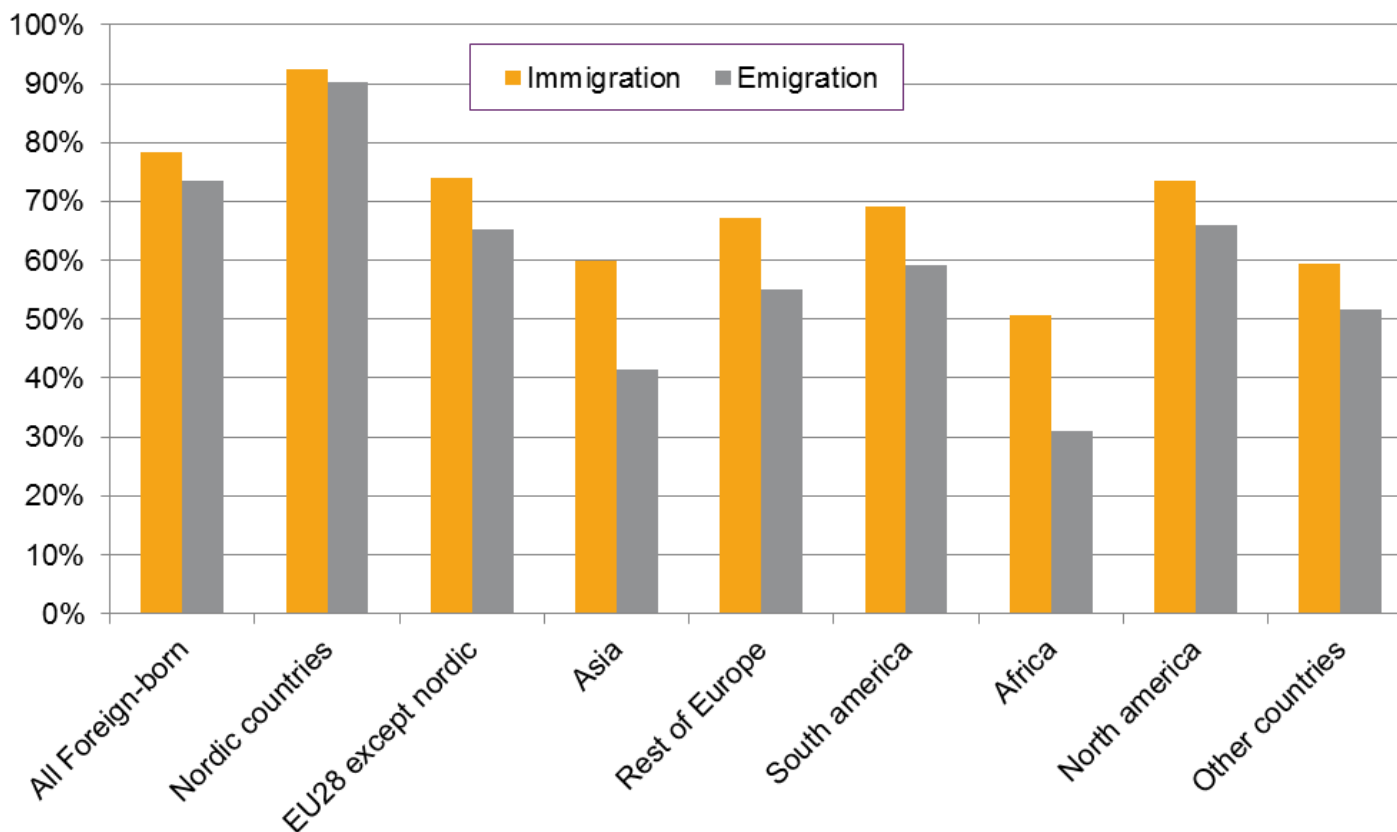
Usually few migrations

- Circular migrants by region of birth and number of migrations, %

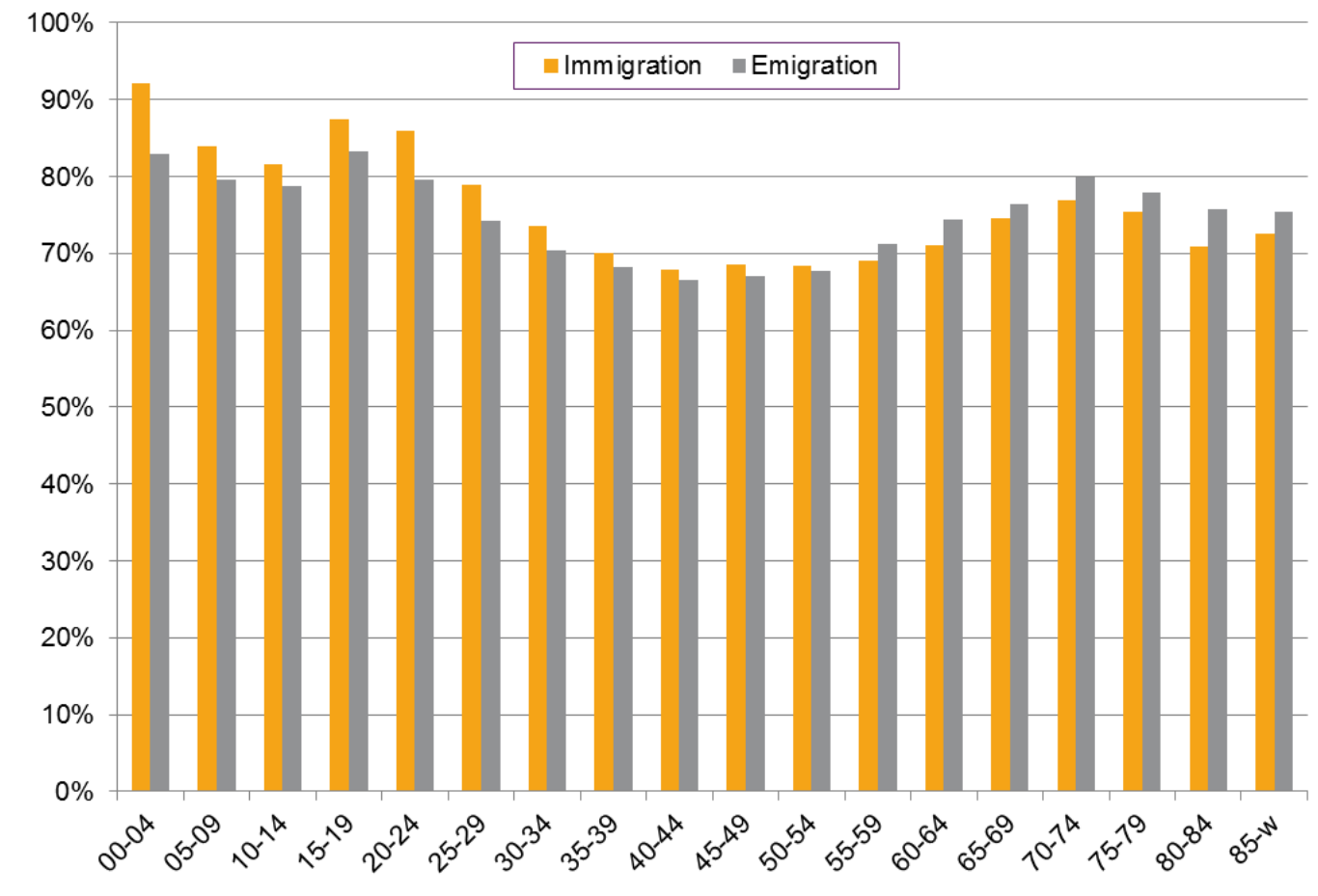


"Yo-yo" migrators

- Most migrations is between Sweden and country of birth, %

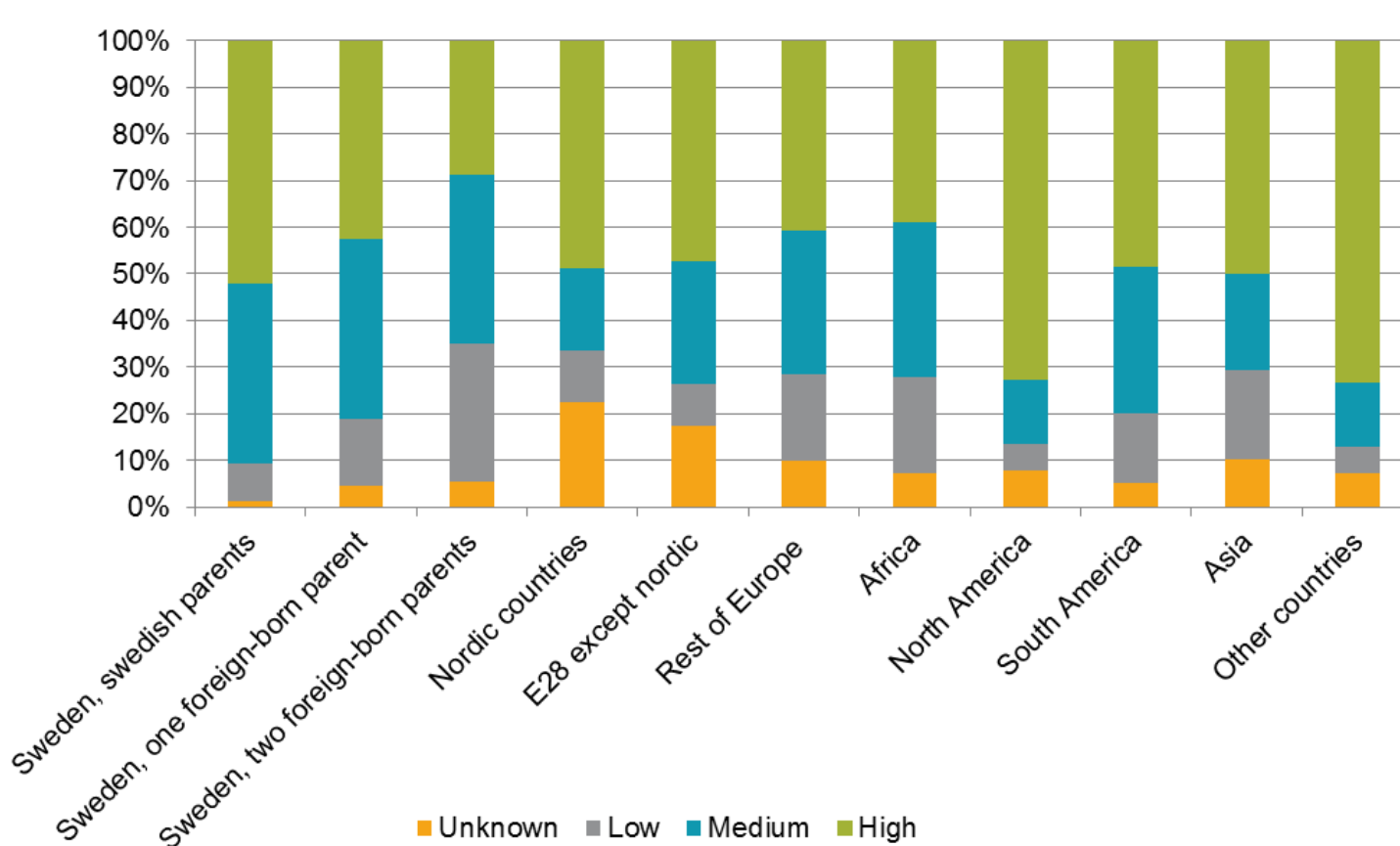


"Yo-yo" migrations by age



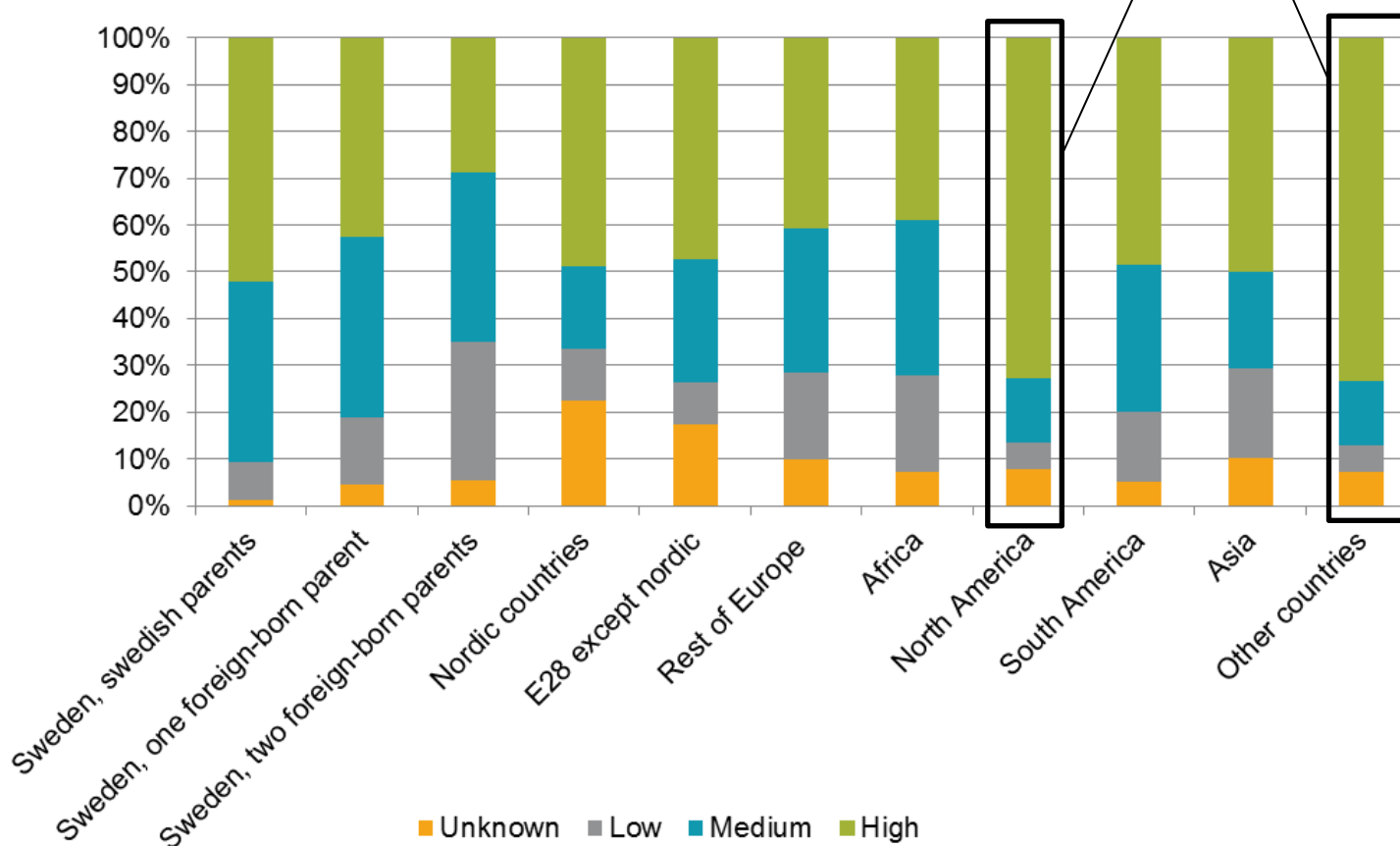
Education level

- Least 3 migrations, 18 years and older 2005 – 2014



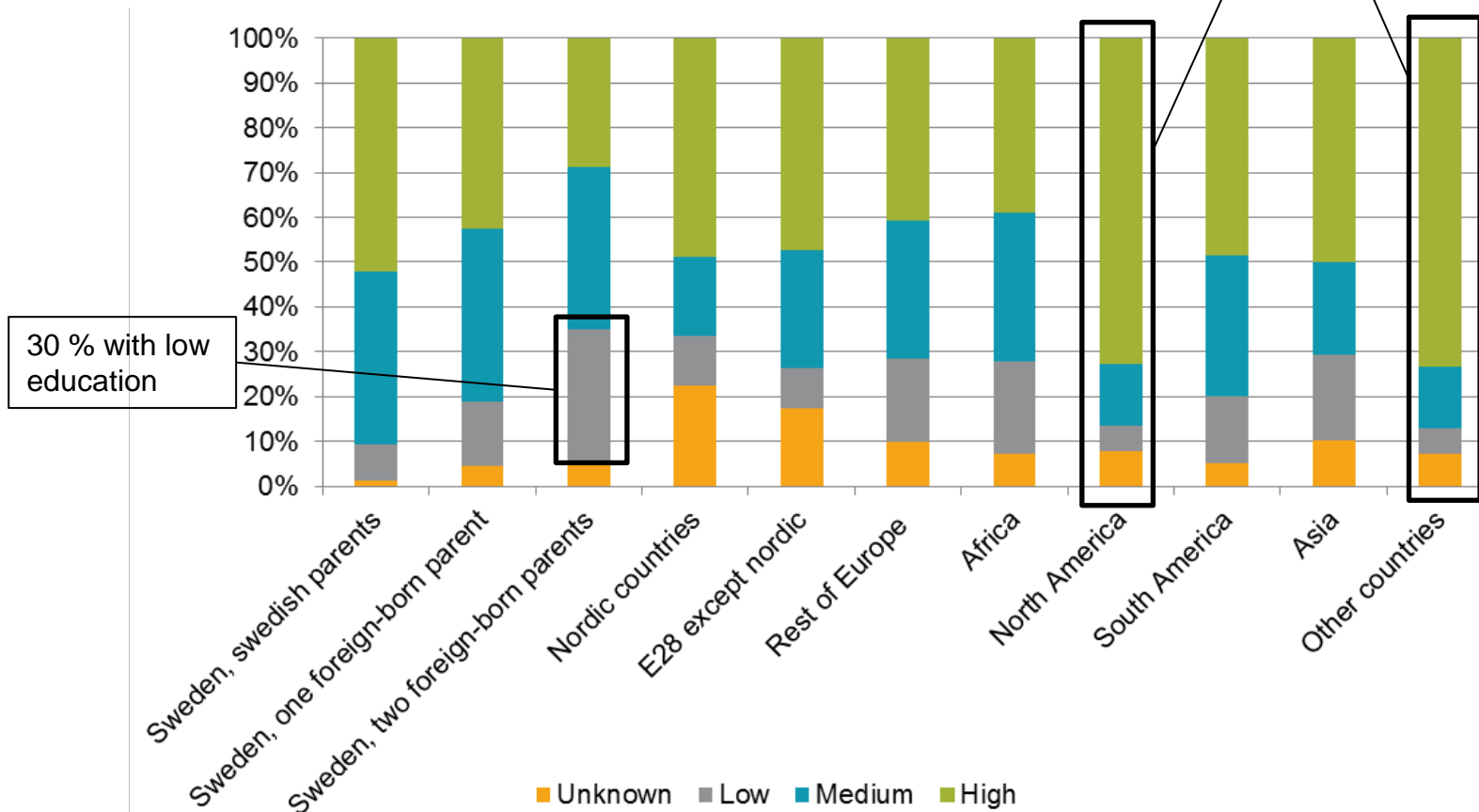
Education level

- Least 3 migrations, 18 years and older 2005 – 2014



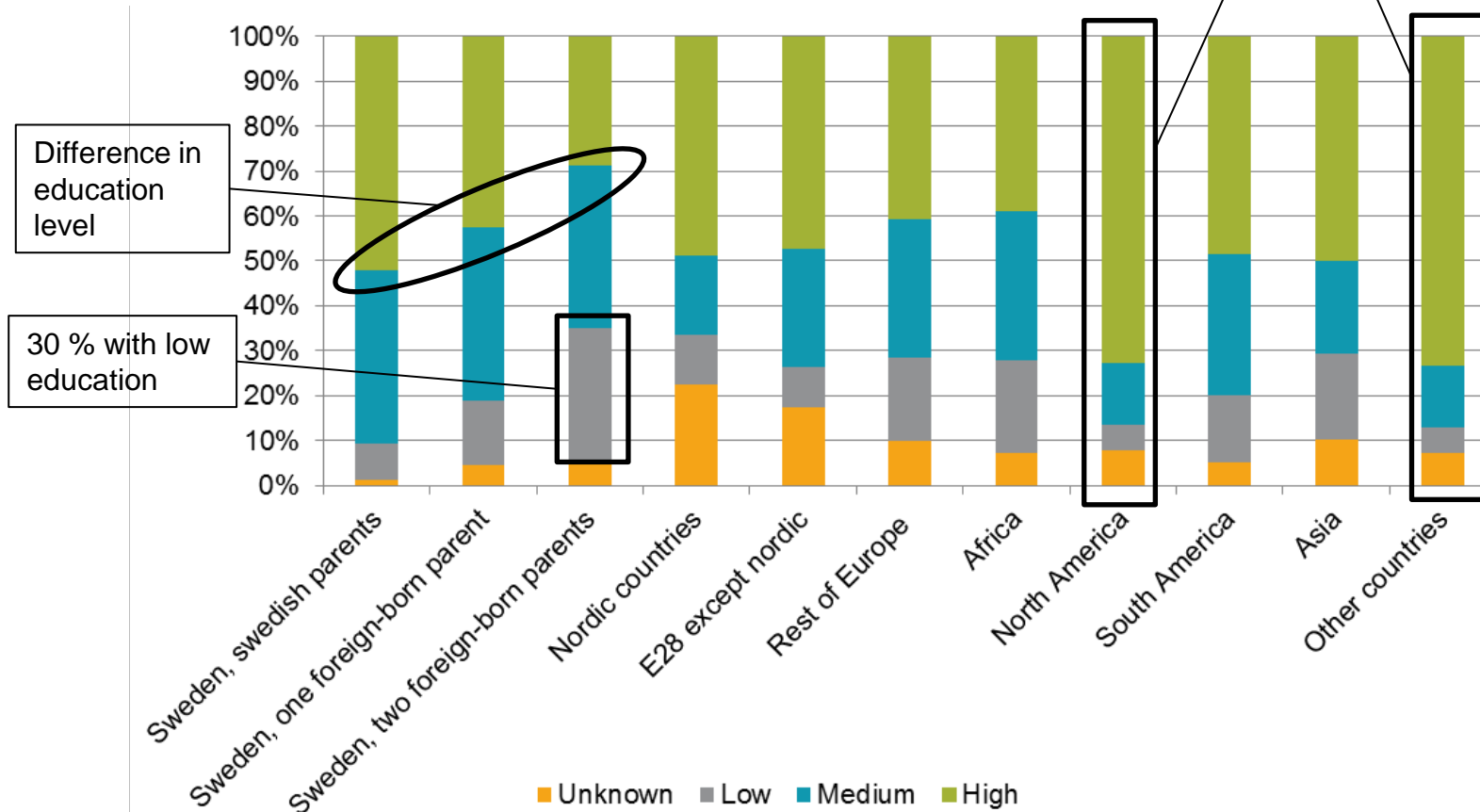
Education level

- Least 3 migrations, 18 years and older 2005 – 2014



Education level

- Least 3 migrations, 18 years and older 2005 – 2014



Migration register

- Some questions have to be answered
 - Which population should the database contain?
 - What variables should the database contain?
 - What statistics should be published?
- United Nations Economic Commission for Europe (UNECE)
 - Task force 2013
 - *Statistical definition of circular migration*
A circular migrant is a person who has crossed the national borders of the reporting country at least 3 times over the past 10 years, each time with duration of stay (abroad or in the country) of at least 12 months.

References

- SOU 2010:40: Delbetänkande av kommittén för cirkulär migration och utveckling
- SOU 2011:28: Cirkulär migration och utveckling – förslag och framåtblick
- SCB 2006, SCB:s regionala statistik i ett fyrtioårsperspektiv, 2006:1
- SCB 2006, Historic population register, 2006:3
- SCB 2007, Personnummer – dess konstruktion och hantering inom Statistiska centralbyrån
- SCB 2012 (Anna-Karin Nylin), Background and definitions on circular migration
- SCB 2014, Migrationsstatistik i Sverige – nuläge, behov och förslag till förbättringar
- UNECE 2016, Defining and Measuring Circular Migration (Draft 19 January 2016)



Thank you!

E-mail: tomas.johansson@scb.se

