

Distr.
GENERAL

WP. 6
12 May 2008

ENGLISH ONLY

**UNITED NATIONS STATISTICAL COMMISSION and
ECONOMIC COMMISSION FOR EUROPE
CONFERENCE OF EUROPEAN STATISTICIANS**

Workshop on Data Dissemination Systems
(Geneva, 12 May 2008)

PC-Axis and PX-Web

PC-Axis and PX-Web are the output programs in the PC-Axis family.

PC-Axis is a Windows program that can be used with PC-Axis files and with SQL databases.

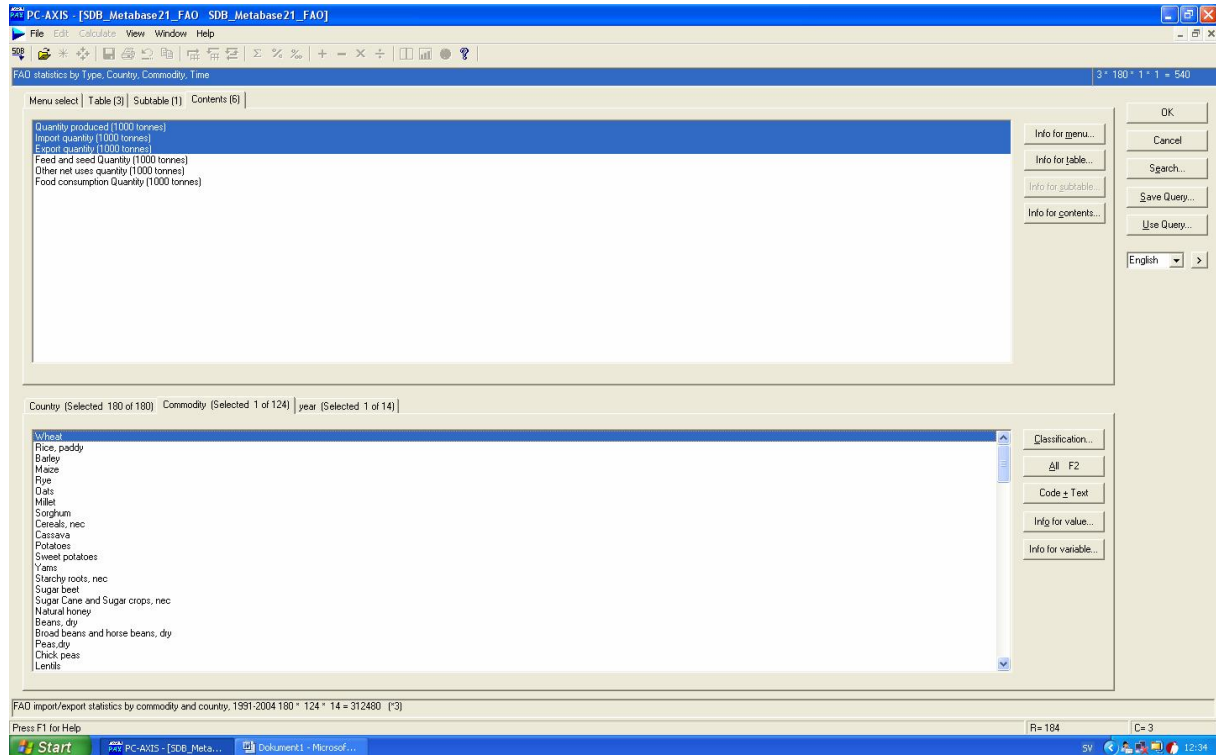
If the Swedish data model is used the retrieval can be done in PC-Axis SQL user interface. If PC-Axis files are produced elsewhere the PC-Axis version without SQL connection is used. This version is also used by people working over the Internet, since they can download files and continue working locally with the files.

PX-Web is used on the web and with PC-Axis files which the administrator publish on the web site including a dynamically produced list of contents. The user can do some editing on the web and also download his selection for further work locally.

PC-Axis

Retrieving from the SQL database:

A dialog allow the user to find the data he is interested in



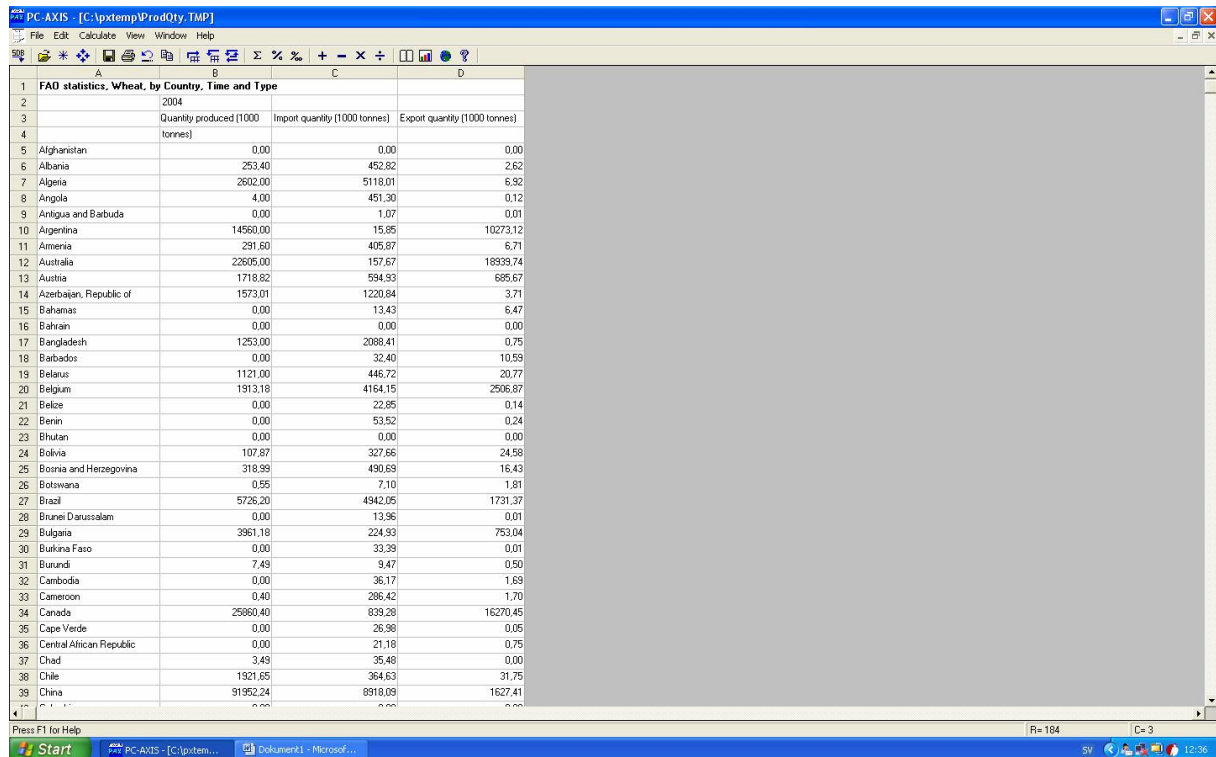
When he has done his selection and pressed OK he gets a table:

The screenshot shows the PC-Axis software interface displaying a table of data. The title bar reads "PC-Axis - [C:\pxtemp\ProdQty.TMP]". The menu bar includes File, Edit, Calculate, View, Window, and Help. The toolbar contains various icons for file operations and calculations. The main window displays a table with the following data:

1	FAO statistics by Country, Commodity, Time and Type			
2		2004		
3		Quantity produced (1000 tonnes)	Import quantity (1000 tonnes)	Export quantity (1000 tonnes)
4				
5	Alghanistan			0.00
6	Wheat	0.00	0.00	
7	Albania			2.62
8	Wheat	253.40	452.82	
9	Algeria			6.32
10	Wheat	2602.00	5118.01	
11	Angola			0.12
12	Wheat	4.00	451.30	
13	Antigua and Barbuda			0.01
14	Wheat	0.00	1.07	
15	Argentina			10273.12
16	Wheat	14560.00	15.85	
17	Armenia			6.71
18	Wheat	291.60	405.87	
19	Australia			18939.74
20	Wheat	22605.00	157.67	
21	Austria			685.67
22	Wheat	1718.82	594.93	
23	Azerbaijan, Republic of			3.71
24	Wheat	1573.01	1220.84	
25	Bahamas			6.47
26	Wheat	0.00	13.43	
27	Bahrain			0.00
28	Wheat	0.00	0.00	
29	Bangladesh			0.75
30	Wheat	1253.00	2088.41	
31	Barbados			10.59
32	Wheat	0.00	32.40	
33	Belarus			20.77
34	Wheat	1121.00	446.72	
35	Belgium			2506.87
36	Wheat	1913.18	4164.15	
37	Belize			0.14
38	Wheat	0.00	22.85	
39	Benin			

The status bar at the bottom shows "Press F1 for Help", "R= 364", and "C= 3".

There are many options to edit and calculate. If the user has selected only one value for a variable it can be a good idea to delete that variable and place the value in the title.



PC AXIS - [C:\pctemp\ProdQty.TMP]

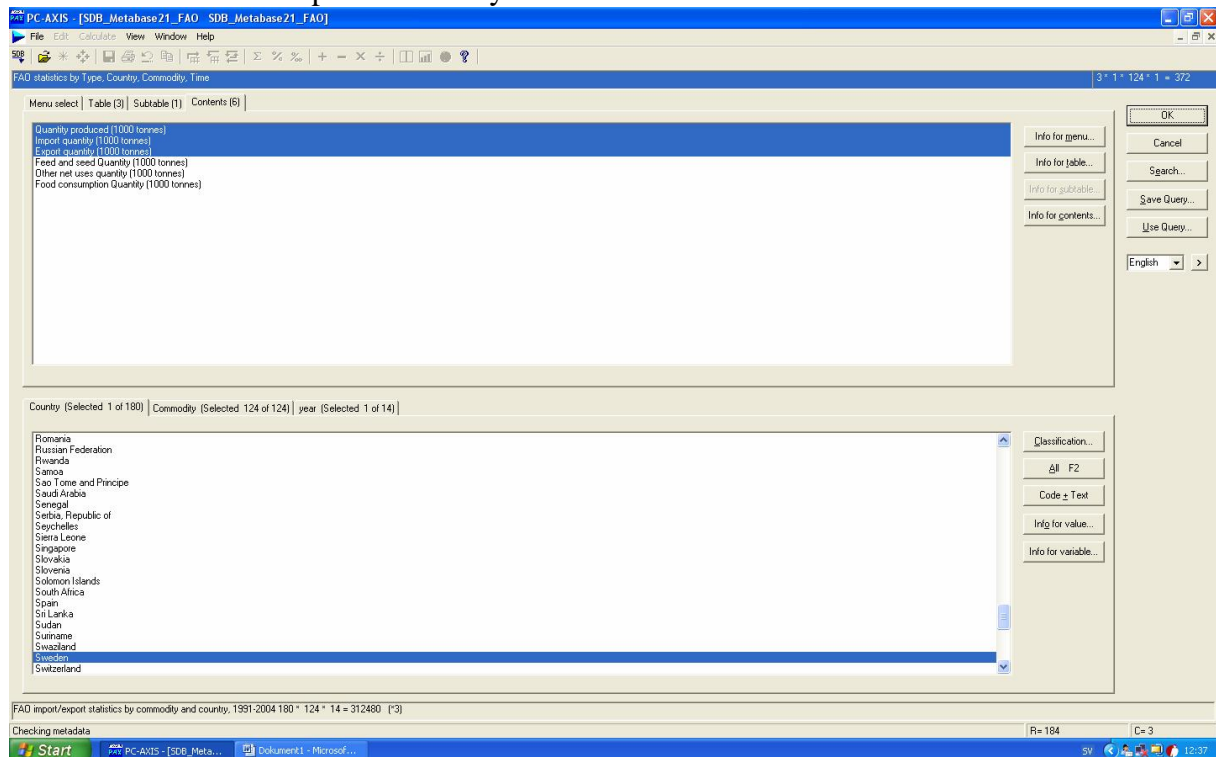
File Edit Calculate View Window Help

FAO statistics, Wheat, by Country, Time and Type

	2004		
	Quantity produced (1000 tonnes)	Import quantity (1000 tonnes)	Export quantity (1000 tonnes)
1 Afghanistan	0.00	0.00	0.00
2 Albania	253.40	452.82	2.62
3 Algeria	2602.00	5118.01	5.92
4 Angola	4.00	451.30	0.12
5 Antigua and Barbuda	0.00	1.07	0.01
6 Argentina	14560.00	15.85	10273.12
7 Armenia	291.60	405.87	6.71
8 Australia	22605.00	157.67	18939.74
9 Austria	1718.82	594.93	685.67
10 Azerbaijan, Republic of	1573.01	1220.84	3.71
11 Bahamas	0.00	13.43	6.47
12 Bahrain	0.00	0.00	0.00
13 Bangladesh	1253.00	2088.41	0.75
14 Barbados	0.00	32.40	10.59
15 Belarus	1121.00	446.72	20.77
16 Belgium	1913.18	4164.15	2506.87
17 Belize	0.00	22.85	0.14
18 Benin	0.00	53.52	0.24
19 Bhutan	0.00	0.00	0.00
20 Bolivia	107.87	327.66	24.58
21 Bosnia and Herzegovina	318.99	490.69	16.43
22 Botswana	0.55	7.10	1.81
23 Brazil	5726.20	4942.05	1731.37
24 Brunei Darussalam	0.00	13.96	0.01
25 Bulgaria	3961.18	224.93	753.04
26 Burkina Faso	0.00	33.39	0.01
27 Burundi	7.49	9.47	0.50
28 Cambodia	0.00	36.17	1.69
29 Cameroon	0.40	286.42	1.70
30 Canada	25660.40	839.28	16270.45
31 Cape Verde	0.00	26.98	0.05
32 Central African Republic	0.00	21.18	0.75
33 Chad	3.49	35.48	0.00
34 Chile	1921.65	364.63	31.75
35 China	91952.24	8918.09	1627.41

Press F1 for Help R=184 C=3

Depending on what the table should reflect different selections are made. Sometimes the table concerns all data for a specific country:



PC AXIS - [SDB_Metabase21_FA0 SDB_Metabase21_FA0]

File Edit Calculate View Window Help

FAO statistics by Type, Country, Commodity, Time

Menu select Table (3) Subtable (1) Contents (6)

Quantity produced (1000 tonnes)
Import quantity (1000 tonnes)
Export quantity (1000 tonnes)
Feed and seed Quantity (1000 tonnes)
Other net uses quantity (1000 tonnes)
Food consumption Quantity (1000 tonnes)

Country (Selected 1 of 180) Commodity (Selected 124 of 124) year (Selected 1 of 14)

Romania
Russian Federation
Rwanda
Samoa
Sao Tome and Principe
Saudi Arabia
Senegal
Serbia, Republic of
Seychelles
Sierra Leone
Singapore
Slovakia
Slovenia
Solomon Islands
South Africa
Spain
Sri Lanka
Sudan
Suriname
Swaziland
Sweden
Switzerland

Classification...
F2
Code ± Text
Info for value...
Info for variable...

FAO import/export statistics by commodity and country, 1991-2004 180 * 124 * 14 = 312480 (*)

Checking metadata R=184 C=3

PC AXIS - [C:\pctemp\ProdQty.TMP]

File Edit Calculate View Window Help

FAO statistics by Country, Commodity, Time and Type

	2004		
	Quantity produced (1000 tonnes)	Import quantity (1000 tonnes)	Export quantity (1000 tonnes)
Sweden			
Wheat	2412.30	319.27	621.77
Rice, paddy	0.00	84.24	21.17
Barley	1691.90	129.30	349.10
Maize	0.00	66.63	16.76
Rye	133.40	12.34	4.20
Oats	925.30	1.13	399.10
Millet	0.00	0.41	0.00
Sorghum	0.00	0.05	0.01
Cereals, nec	344.90	99.40	80.84
Cassava	0.00	7.66	0.12
Potatoes	979.10	301.53	39.51
Sweet potatoes	0.00	0.13	0.01
Yams	0.00	0.00	0.00
Starchy roots, nec	0.00	0.57	0.01
Sugar beet	2287.10	362.73	574.18
Sugar Cane and Sugar crops, nec	0.00	40.85	8.89
Natural honey	3.40	2.66	0.07
Beans, dry	0.88	1.15	0.17
Broad beans and horse beans, dry	0.00	0.09	0.00
Peas, dry	88.00	3.30	8.91
Chick peas	0.00	0.63	0.04
Lentils	0.00	0.94	0.07
Pulses, nec	0.00	0.07	0.01
Almonds	0.00	11.42	0.70
Pistachios	0.00	0.76	0.03
Cashew nuts	0.00	1.58	0.12
Hazelnuts	0.00	4.18	0.22
Walnuts	0.00	4.18	0.11
Chestnuts	0.00	0.07	0.00
Nuts, nec	0.00	0.69	0.07
Soybeans	0.00	257.75	79.17
Groundnuts	0.00	12.34	3.41
Sunflower seed	0.00	22.70	6.25
Rapeseed and Mustard seed	0.00	0.00	0.00

Press F1 for Help

Start PC AXIS - [C:\pctem... Dokument1 - Microsof...

Sometimes the user wants data at a less detailed level. Then classifications can be used to aggregate, for instance aggregate countries to continents:

PC AXIS - [SDB_Metabase21_FA0 SDB_Metabase21_FA0]

File Edit Calculate View Window Help

FAO statistics by Type, Country, Commodity, Time

Menu select | Table (3) | Subtable (1) | Contents (6)

Quantity produced (1000 tonnes)
Import quantity (1000 tonnes)
Export quantity (1000 tonnes)
Feed and seed Quantity (1000 tonnes)
Other net uses quantity (1000 tonnes)
Food consumption Quantity (1000 tonnes)

Country (Selected 2 of 6) | Commodity (Selected 18 of 18) | Year (Selected 1 of 14)

Africa
Asia
Europe
North America
Oceania
South America

Undo Classes
F2
Code + Text
Info for value...
Info for variable...

abcountry3A 6 * 18 * 14 = 1512 (°3)

Select all values for the active variable

Start PC AXIS - [SDB_Meta... Dokument1 - Microsof...

PC AXIS - [C:\pxtemp\ProdQty.TMP]

File Edit Calculate View Window Help

500

FAO statistics by Commodity, Time, Country and Type

	2004					
	Asia			Europe		
	Quantity produced (1000 tonnes)	Import quantity (1000 tonnes)	Export quantity (1000 tonnes)	Quantity produced (1000 tonnes)	Import quantity (1000 tonnes)	Export quantity (1000 tonnes)
Cereals	1023133.69	122273.74	52994.83	460181.90	84654.25	96110.78
Starchy roots	302344.54	17062.25	19403.82	140542.88	20775.20	14890.31
Sugarcrops	578465.02	140641.38	72004.45	177179.45	94410.93	53804.47
Honey	538.89	79.69	128.22	326.19	214.73	91.35
Pulses	28123.73	3476.08	2748.03	8687.78	2856.70	1858.49
Nuts	5140.65	1276.40	1592.98	1118.46	2067.76	711.10
Oilcrops	275223.36	135233.54	139802.57	30654.61	106466.88	41161.58
Vegetables	566454.45	19406.55	18624.44	79237.92	52319.94	34588.12
Fruits	223457.51	14951.95	20309.43	78225.69	64013.91	41716.92
Stimulants	9581.70	3166.75	3673.94	34.99	9849.01	5256.66
Spices	5450.88	828.25	1139.24	236.06	383.03	201.79
Meat	107494.26	7911.83	1948.16	52349.72	14355.72	13953.04
Edible offals	7183.89	710.90	201.84	3123.42	806.88	1199.45
Animal fat	4707.98	539.88	47.62	2331.75	1404.49	1312.69
Milk	200638.42	18938.45	2565.69	212711.53	51537.07	66170.88
Eggs	39127.34	260.26	259.90	9867.53	1153.56	1163.06
Fish	60848.11	16633.25	6885.25	10169.22	14252.44	10665.22
Aquatic products, other	11156.07	225.48	231.44	192.82	84.84	36.74

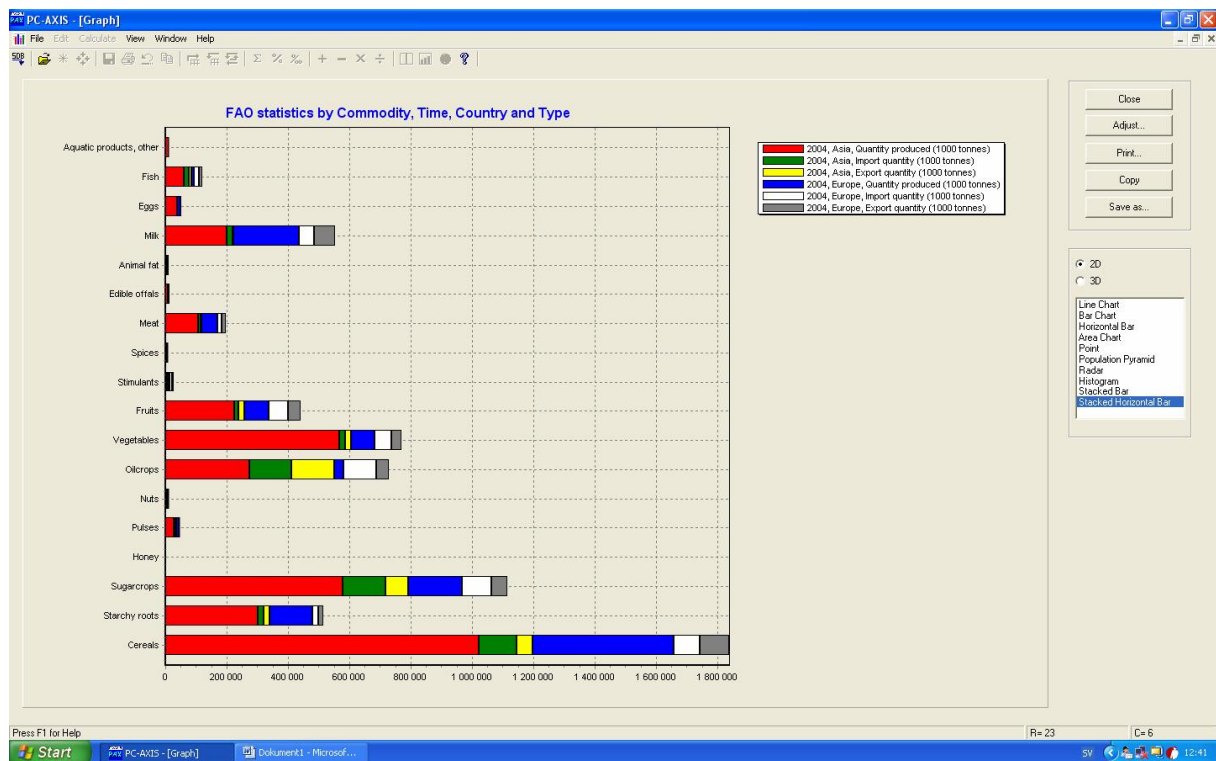
Press F1 for Help

Start PC AXIS - [C:\pxtem... Dokument1 - Microsoft...

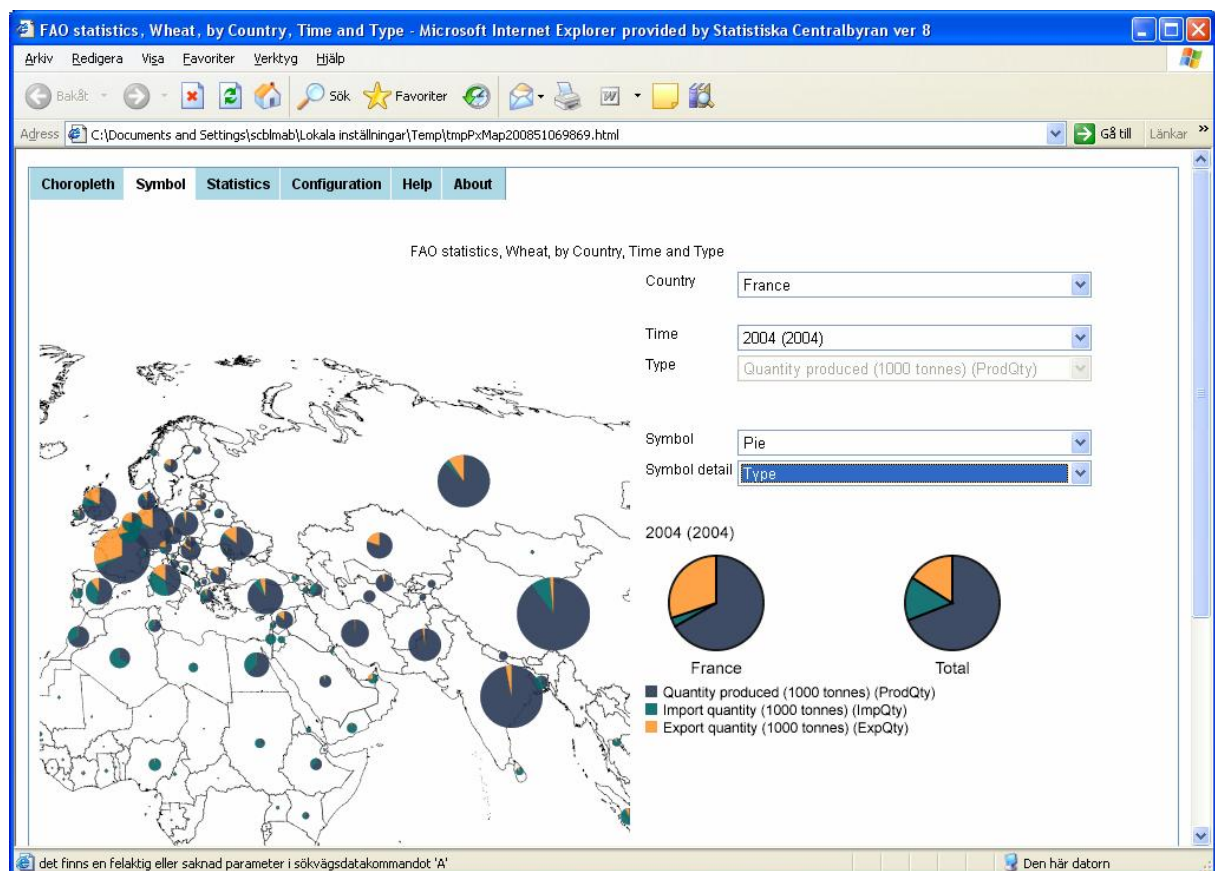
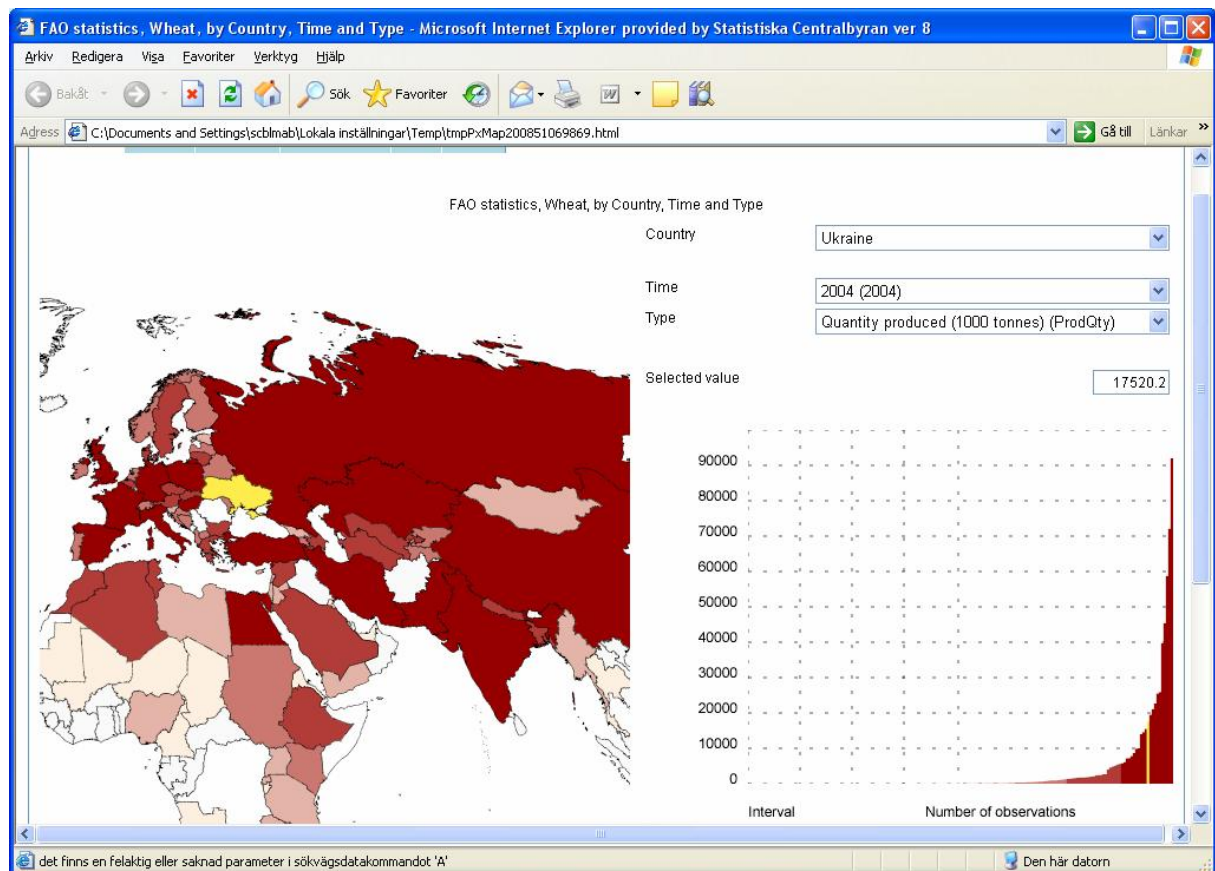
R= 23 C= 6

Showing as graphs and maps

Instead of just showing the table it can also be seen as a graph:

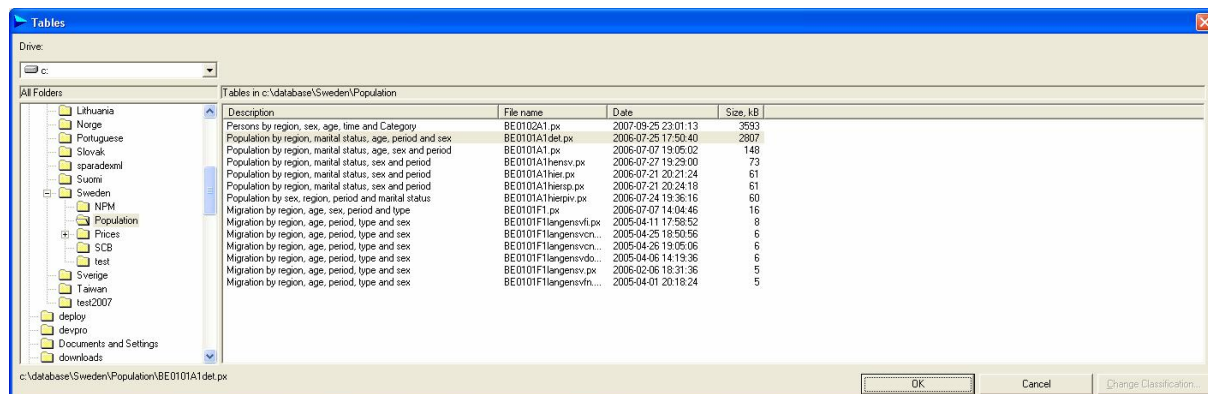


The data can also be shown as a map when countries are selected

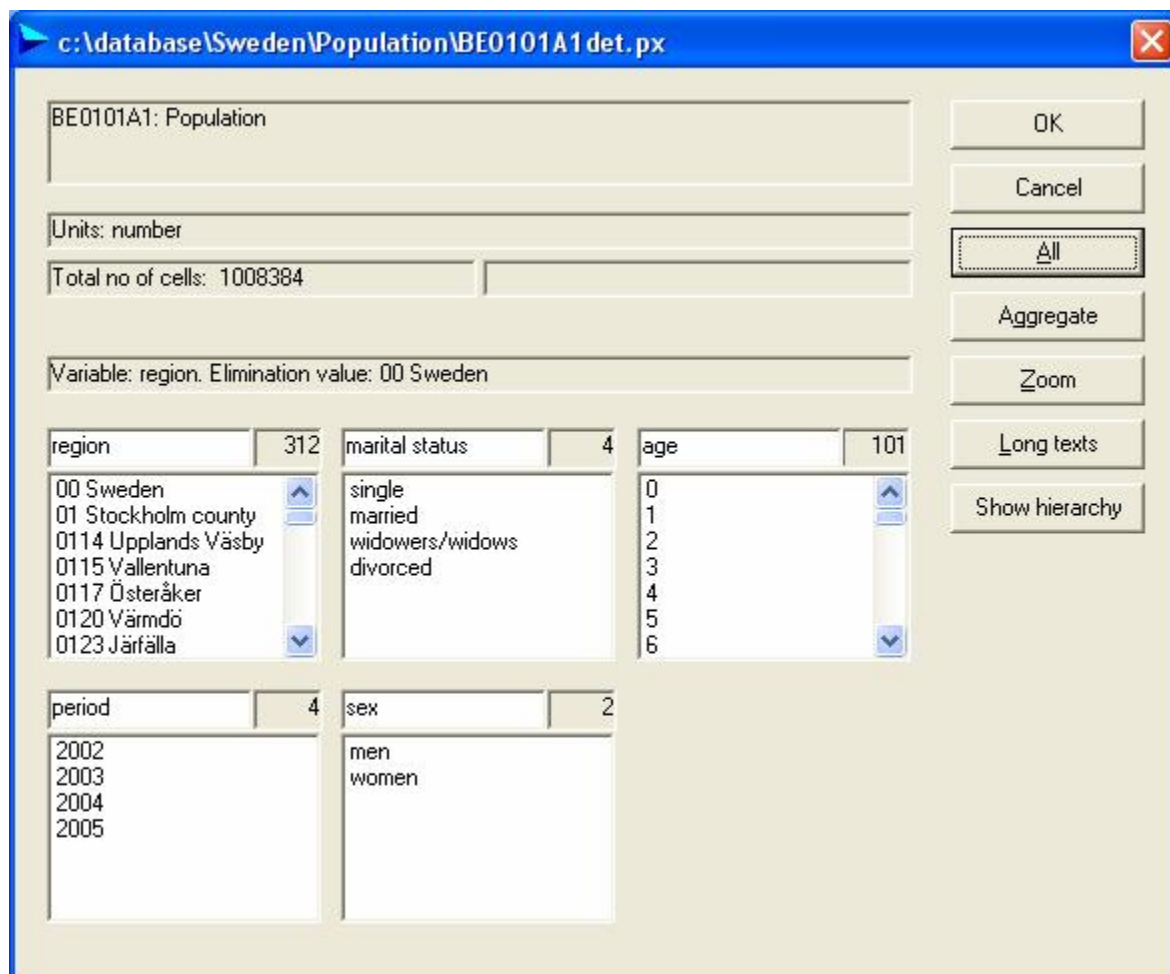


Using PC-Axis files:

If the user has downloaded PC-Axis from Internet or if the statistical office does not use the SQL meta model, PC-Axis works with PC-Axis files. The user starts by selecting a file:



From this file he can make a further selection what to include in the table:



He can also use the aggregate option for instance for the variable age:

c:\database\Sweden\Population\BE0101A1 det.px

BE0101A1: Population

Units: number

Total no of cells: 99840 $1 * 4 * 10 * 1 * 2 = 80$

Variable: period. Elimination not allowed

region 312 marital status 4 10-yearsclasses 10

00 Sweden
01 Stockholm county
0114 Upplands Väsby
0115 Vallentuna
0117 Österåker
0120 Värmdö
0123 Järfälla

single
married
widowers/widows
divorced

30-39
40-49
50-59
60-69
70-79
80-89
90+

period 4 sex 2

2002
2003
2004
2005

men
women

OK
Cancel
All
Aggregate
Zoom
Long texts
Show hierarchy

Once he has the table on screen all the other options are available for edit and calculation:

PC-Axis - [c:\database\Sweden\Population\BE0101A1 det.px]

File Edit Calculate View Window Help

Σ % + - × ÷

1	Population by region,		
2	marital status,		
3	10-yearsclasses, period		
4	and sex		
5		2005	
6		Men	Women
7	00 Sweden		
8	Single		
9	0-9	495001	470031
10	10-19	612440	580326
11	20-29	505837	445974
12	30-39	379790	292705
13	40-49	232911	172246
14	50-59	136270	93712
15	60-69	60895	39078
16	70-79	27626	20702
17	80-89	12841	15771
18	90+	1487	4472
19	Married		
20	0-9	0	0
21	10-19	142	1196
22	20-29	37272	71092
23	30-39	222847	268839
24	40-49	302806	316852
25	50-59	355577	359786
26	60-69	327008	302363
27	70-79	200746	169819
28	80-89	92188	57863
29	90+	7033	2749
30	Widowers/widows		
31	0-9	0	0
32	10-19	0	0
33	20-29	27	123
34	30-39	383	1288
35	40-49	1564	5348
36	50-59	6405	19546
37	60-69	16310	54535
38	70-79	29539	119118
39	80-89	40073	159744
40	90+		

Press F1 for Help

Start PC-Axis - [c:\datab... Dokument1 - Microsof...

SV 12:52

To make a nicer layout change variable order with the help of the pivot button

PC-Axis - [c:\database\Sweden\Population\BE0101A1det.px]

File Edit Calculate View Window Help

Population by region, 10-yearsclasses, period, marital status and sex

	A	B	C	D	E	F	G	H	I
1									
2		2005							
3		Single		Married		Widowers/widows		Divorced	
4		Men	Women	Men	Women	Men	Women	Men	Women
5	00 Sweden								
6	0-9	495001	470031	0	0	0	0	0	0
7	10-19	612440	580326	142	1196	0	0	1	19
8	20-29	505837	445974	37272	71092	27	123	3394	7610
9	30-39	379790	292705	222847	268839	383	1288	32390	50049
10	40-49	232911	172246	302806	316852	1564	5348	84450	104840
11	50-59	136270	93712	355577	359796	6405	19546	110185	127819
12	60-69	60895	39078	327008	302363	16310	54535	89641	103713
13	70-79	27626	20702	200746	163819	29939	119118	38525	51478
14	80-89	12841	15771	92188	57863	40073	159744	11590	23027
15	90+	1487	4472	7033	2749	10158	43913	798	3456

Press F1 for Help

Start PC-Axis - [c:\databa... Dokument1 - Microsof...

SV 12:53

Some statistics are typical time series, such as for instance Consumer price index:

c:\database\Sweden\Prices\PR0101B3.px

PR0101B3: Consumer Price Index (CPI) (by COICOP), 1980=100

Units: Index

Total no of cells: 3445 2 * 22 = 44

Variable: period. Elimination not allowed

Product group (Selected 2 of 65) period (Selected 22 of 53)

2003M11
2003M12
2004M01
2004M02
2004M03
2004M04
2004M05
2004M06
2004M07
2004M08
2004M09
2004M10
2004M11
2004M12
2005M01
2005M02
2005M03

☒ Use this layout as default

Short texts

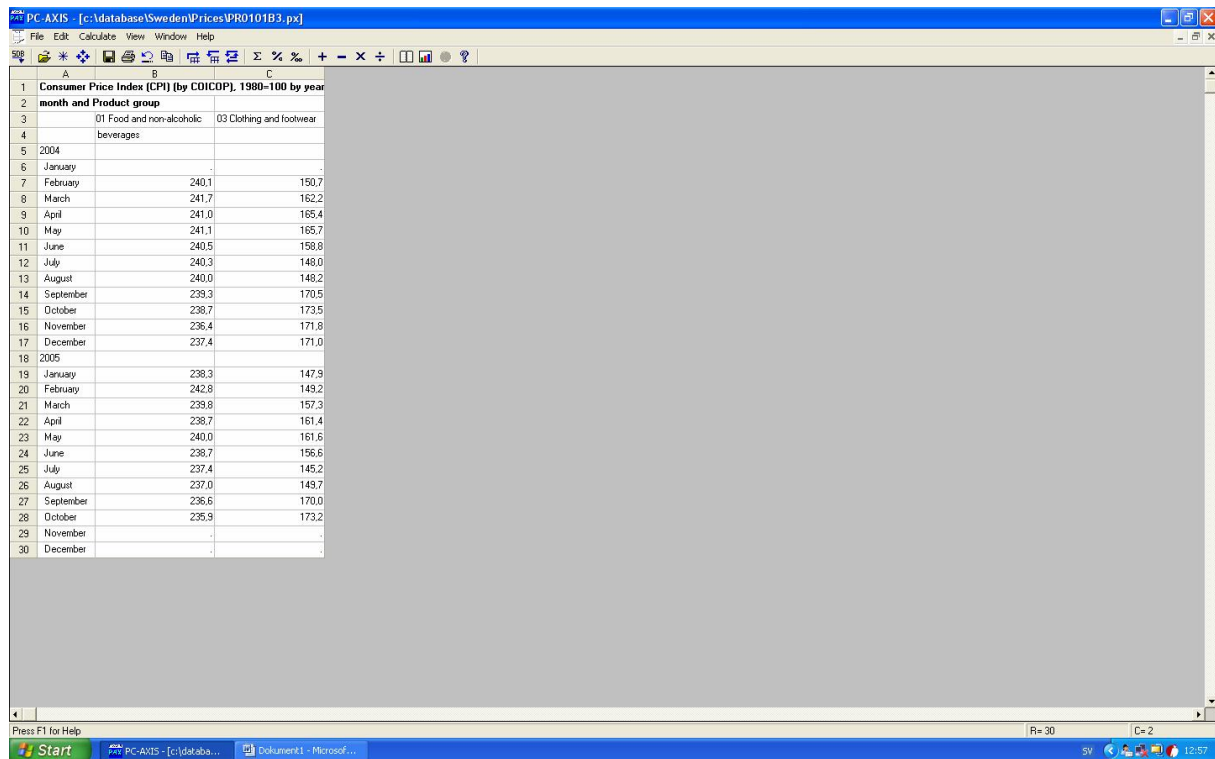
PC-AXIS - [* c:\database\Sweden\Prices\PR0101B3.px]

	A	B	C	D	E	F	G	H	I	J	K	L	M	N	O	P
1	Consumer Price Index (CPI) (by COICOP), 1980=100 by Product group and															
2	period															
3		2004M01	2004M02	2004M03	2004M04	2004M05	2004M06	2004M07	2004M08	2004M09	2004M10	2004M11	2004M12	2005M01	2005M02	2005M03
4	01 Food and non-alcoholic beverages	240,4	240,1	241,7	241,0	241,1	240,5	240,3	240,0	239,3	238,7	236,4	237,4	238,3	242,8	2
5	03 Clothing and footwear	150,6	150,7	162,2	165,4	165,7	158,8	148,0	148,2	170,5	173,5	171,8	171,0	147,9	149,2	1

Press F1 for Help R= 5 C= 22

When just a couple of commodities are selected the table becomes wide, so a change of variable will improve the view

For time series that are monthly or quarterly it is also possible to split the time variable



PC AXIS - [c:\database\Sweden\Prices\PR0101B3.px]

File Edit Calculate View Window Help

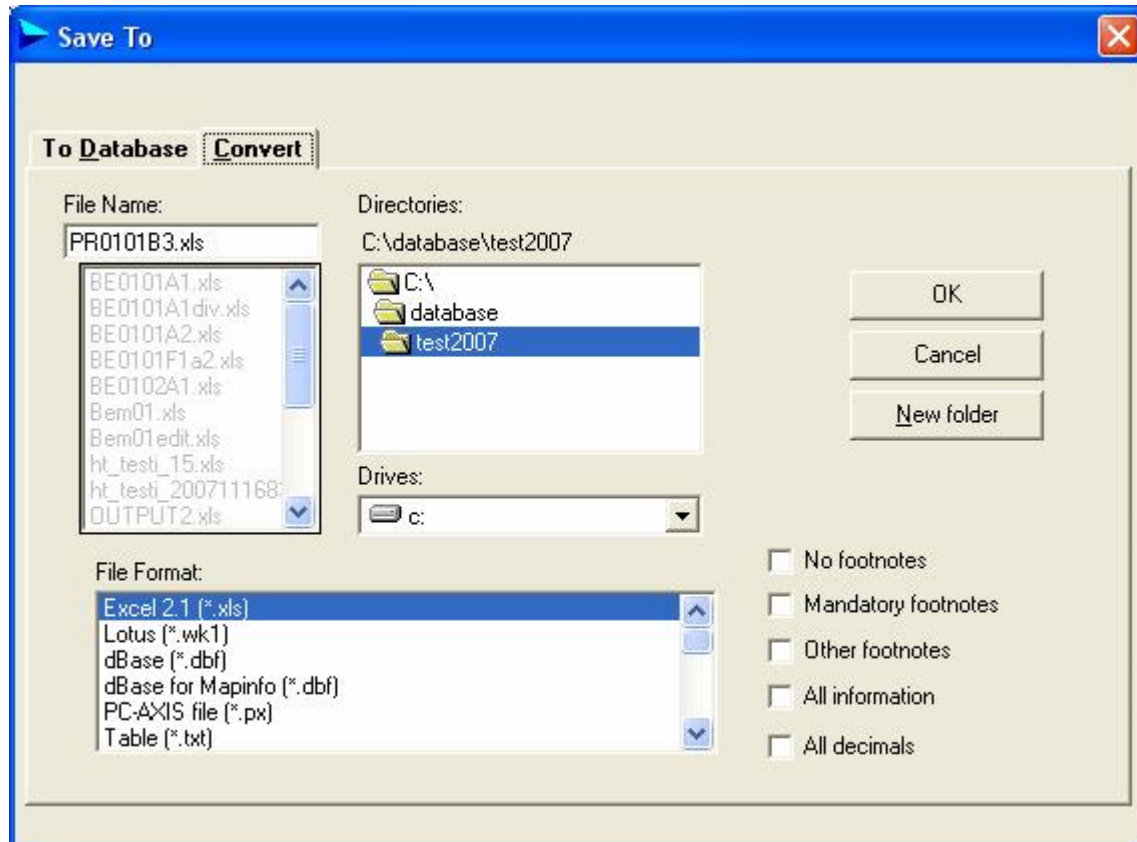
	A	B	C
1	Consumer Price Index (CPI) (by COICOP), 1980=100 by year		
2	month and Product group		
3		01 Food and non-alcoholic beverages	03 Clothing and footwear
4	2004		
5	January		
6	February	240.1	150.7
7	March	241.7	162.2
8	April	241.0	165.4
9	May	241.1	165.7
10	June	240.5	158.8
11	July	240.3	148.0
12	August	240.0	148.2
13	September	239.3	170.5
14	October	238.7	173.5
15	November	236.4	171.8
16	December	237.4	171.0
17	2005		
18	January	238.3	147.9
19	February	242.8	149.2
20	March	239.8	157.3
21	April	238.7	161.4
22	May	240.0	161.6
23	June	238.7	156.6
24	July	237.4	145.2
25	August	237.0	149.7
26	September	236.6	170.0
27	October	235.9	173.2
28	November		
29	December		
30			

Press F1 for Help

Start PC-Axis - [c:\databa... Dokument1 - Microsoft...

SV 12:57

To save a table in other file format, just select one of the 20 options in the file format listbox:



Using PX-Web

PX-web is the web version of PC-Axis. It does not have all the functionality of PC-Axis but most of the functions for edit and calculations are now included

The user starts by selecting which table he wants to see and is then presented with a value selection page where he makes his detailed selection.

Table: FAO statistics for Asian Countries byt country, commodity and type - Microsoft Internet Explorer provided by Statistiska

Arkiv Redigera Visa Favoriter Verktyg Hjälp

Bakåt Sök Favoriter Gå till Länkar

Address http://localhost/pweb2007/Dialog/varval.asp?ma=ProdImpExpAsia&ti=FAO+statistics+for+Asian+Countries+byt+country+%2C+commodity+and+type&path=../Date

Database - Subject area - Table

Table: FAO statistics for Asian Countries byt country, commodity and type
Information: [Information details](#), [Footnotes](#)

Mark your selections and choose between table on screen and file format. [Marking tips](#)
For variables marked ♦ you need to select at least one value

Country ♦ ✓ -	Commodity ♦ ✓ -	Time ♦ ✓ - ↓ ↑
Total: 48. Selected: 48	Total: 124. Selected: 1	Total: 5. Selected: 1
Timor-Leste Turkey Turkmenistan United Arab Emirates Uzbekistan Viet Nam Yemen	Wheat Rice, paddy Barley Maize Pye Oats Millet	2000 2001 2002 2003 2004
Search <input type="text"/> > <input type="checkbox"/> Text start	Search <input type="text"/> > <input type="checkbox"/> Text start	Search <input type="text"/> > <input type="checkbox"/> Text start
Type ♦ ✓ -		
Total: 6. Selected: 6		
Quantity produced (1000 tonnes) Import quantity (1000 tonnes) Export quantity (1000 tonnes) Feed and seed Quantity (1000 tonnes) Other net uses quantity (1000 tonnes) Food consumption Quantity (1000 tonnes)		
Search <input type="text"/> > <input type="checkbox"/> Text start		

Select an option and press

Lokalt intranät

Table - Microsoft Internet Explorer provided by Statistiska Centralbyran ver 8

Arkiv Redigera Visa Favoriter Verktyg Hjälp

Bakåt Sök Favoriter

Adress http://localhost/pxweb2007/Dialog/Saveshow.asp Gå till Länkar

PX-WEB PX-WEB PX-WEB

Database - Subject area - Table - Variables and values

Edit and calculate Save As Graphs and Maps

Shortcuts: XLS PX CSV

FAO statistics by Commodity, Country, Time and Type

	2004					
	Quantity produced (1000 tonnes)	Import quantity (1000 tonnes)	Export quantity (1000 tonnes)	Feed and seed Quantity (1000 tonnes)	Other net uses quantity (1000 tonnes)	Food consumption Quantity (1000 tonnes)
Wheat						
Afghanistan	0.00	0.00	0.00	0.00	0.00	0.00
Armenia	291.60	405.87	6.71	122.65	203.07	365.00
Azerbaijan, Republic of	1 573.01	1 220.84	3.71	647.61	740.30	1 402.00
Bahrain	0.00	0.00	0.00	0.00	0.00	0.00
Bangladesh	1 253.00	2 088.41	0.75	213.37	142.76	2 985.00
Bhutan	0.00	0.00	0.00	0.00	0.00	0.00
Brunei Darussalam	0.00	13.96	0.01	0.78	-0.36	14.00
Cambodia	0.00	36.17	1.69	3.41	-5.21	36.00
China	91 952.24	8 918.09	1 627.41	14 592.82	20 434.65	64 215.00
Georgia	185.83	651.98	118.67	240.65	-211.30	690.00
India	72 060.00	95.85	2 230.01	9 284.70	990.80	59 650.00
Indonesia	0.00	4 926.23	395.71	500.88	123.75	3 906.00
Iran, Islamic Rep of	14 000.00	227.98	70.99	3 607.71	-481.82	11 031.00
Iraq	0.00	0.00	0.00	0.00	0.00	0.00
Israel	165.63	1 864.48	21.43	806.04	553.36	649.00
Japan	860.30	5 848.65	355.95	1 095.97	177.17	5 080.00
Jordan	13.17	847.01	26.18	5.37	470.19	358.00

Lokalt intranät

When he has the table on screen there are options for editing, calculation and downloads in many file formats.

Example sorting

Table - Microsoft Internet Explorer provided by Statistiska Centralbyran ver 8

Arkiv Redigera Visa Favoriter Verktyg Hjälp

Åter Bakåt Sök Favoriter

Adress http://localhost/pxweb2007/Dialog/DataSort.asp?Matrix=ProdImpExpAsia&timeid=2008510225882&lang=1&nroofvar=4&numberstub=2&NoOfValues=6 Gå till Länkar

[Copy to clipboard](#) / [Copy to clipboard for word processing](#)

Click on a column heading to sort the table

FAO statistics for Asian Countries byt country, commodity and type

Commodity	Country	Time	Quantity produced (1000 tonnes)	Import quantity (1000 tonnes)	Export quantity (1000 tonnes)	Feed and seed Quantity (1000 tonnes)	Other net uses quantity (1000 tonnes)	Food consumption Quantity (1000 tonnes)
Wheat	China	2004	91952,24	8918,09	1627,41	14592,82	20434,65	64215,00
Wheat	India	2004	72060,00	95,85	2230,01	9284,70	990,80	59650,00
Wheat	Pakistan	2004	19499,80	110,63	457,47	2652,62	1300,72	15200,00
Wheat	Turkey	2004	21000,00	1635,54	1241,84	4234,59	5843,17	11316,00
Wheat	Iran, Islamic Rep of	2004	14000,00	227,98	70,99	3607,71	-481,82	11031,00
Wheat	Japan	2004	860,30	5848,65	355,95	1095,97	177,17	5080,00
Wheat	Indonesia	2004	0,00	4926,23	395,71	500,88	123,75	3906,00
Wheat	Uzbekistan	2004	5377,51	2,12	310,33	1592,40	-9,39	3486,00
Wheat	Bangladesh	2004	1253,00	2088,41	0,75	213,37	142,76	2985,00
Wheat	Syrian Arab Republic	2004	4537,46	295,86	769,73	1118,33	503,93	2441,00
Wheat	Korea, Republic of	2004	12,62	3882,95	91,60	1652,87	-5,43	2157,00
Wheat	Saudi Arabia	2004	2358,00	137,22	133,83	153,86	50,22	2157,00
Wheat	Philippines	2004	0,00	2273,58	27,21	1003,16	-707,91	1951,00
Wheat	Yemen	2004	105,27	1712,35	55,79	175,42	-253,42	1840,00
Wheat	Kazakhstan	2004	9936,93	73,66	2464,57	4027,91	1866,39	1652,00
Wheat	Malaysia	2004	0,00	3460,61	191,77	418,78	1293,77	1556,00
Wheat	Azerbaijan, Republic of	2004	1573,01	1220,84	3,71	647,61	740,30	1402,00

Lokalt intranät

Example population statistics

The statistics shown in PX-Web can be from any subject. When it is population data it can be interesting to show it as a population pyramid.

Table: Population by region, marital status, age, sex and period - Microsoft Internet Explorer provided by Statistiska Centralb

Arkiv Redigera Visa Favoriter Verktyg Hjälp

Bakåt Sök Favoriter

Adress http://localhost/pxweb2007/Dialog/varval.asp?ma=BE0101A1&ti=Population+by+region%2C+marital+status%2C+age%2C+sex+and+period&path=../Database/Sw Gå till Länkar

Database - Subject area - Table

Table: Population by region, marital status, age, sex and period
Information: [Information details](#), [Footnotes](#), [Detailed information](#)

Mark your selections and choose between table on screen and file format. [Marking tips](#)
For variables marked ♦ you need to select at least one value

region	marital status	age
Total: 21. Selected: 0	Total: 4. Selected: 0	Total: 101. Selected: 10:
01 Stockholm county 03 Uppsala county 04 Södermanland county 05 Östergötland county 06 Jönköping county 07 Kronoberg county 08 Kalmar county	single married widowers/widows divorced	94 95 96 97 98 99 100+
Search <input type="text"/> > <input type="checkbox"/> Text start	Search <input type="text"/> > <input type="checkbox"/> Text start	Search <input type="text"/> > <input type="checkbox"/> Text start
sex	period	
Total: 2. Selected: 2	Total: 2. Selected: 1	
men women	2004 2005	
Search <input type="text"/> > <input type="checkbox"/> Text start	Search <input type="text"/> > <input type="checkbox"/> Text start	

Select an option and press

Presentation on screen is limited to 2000 rows and 50 columns.

Klar Lokalt intranät

Select all ages and all sexes, but only one value of any other variables.

Table - Microsoft Internet Explorer provided by Statistiska Centralbyran ver 8

Arkiv Redigera Visa Favoriter Verktyg Hjälp

Bakåt Sök Favoriter

Adress http://localhost/pxweb2007/Dialog/Saveshow.asp Gå till Länkar

PX-WEB PX-WEB PX-WEB

Database - Subject area - Table - Variables and values

Edit and calculate Save As Graphs and Maps

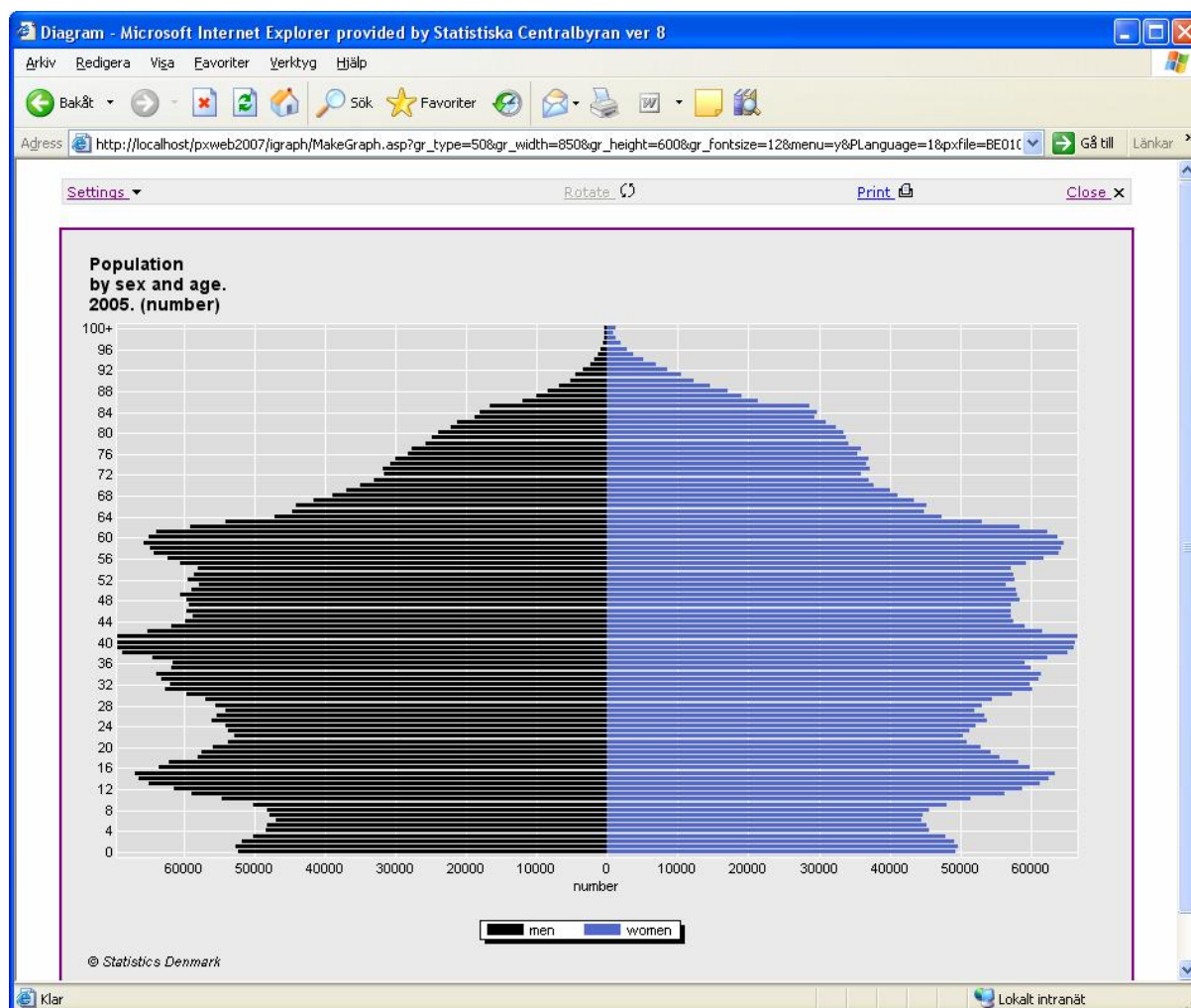
Shortcuts: XLS PX CSV

Population by age, sex and period

	2005
0	
men	52 135
women	49 420
1	
men	52 476
women	49 715
2	
men	51 641
women	49 157
3	
men	50 081
women	47 890
4	
men	48 207
women	45 623
5	
men	48 036
women	45 300
6	
men	46 782
women	44 601
7	
men	47 628

Klar Lokalt intranät

Show as graph:



Example for population counting per cent of foreign citizens

Table - Microsoft Internet Explorer provided by Statistiska Centralbyran ver 8

Arkiv Redigera Visa Favoriter Verktyg Hjälp

Bakåt Sök Favoriter

Adress http://localhost/pxweb2007/Dialog/Saveshow.asp Gå till Länkar

PX-WEB PX-WEB PX-WEB

Database - Subject_area - Table - Variables and values

Edit and calculate Save As Graphs and Maps

Shortcuts: XLS PX CSV

Foreign citizens by country of citizenship, sex and period

	2003	2004	2005
total			
men	235 994	238 360	238 771
women	240 082	242 781	241 128
Afghanistan			
men	3 305	3 599	3 654
women	2 770	3 182	3 287
Albania			
men	159	192	214
women	137	142	157
Algeria			
men	313	329	363
women	218	215	225
Andorra			
men	0	0	0
women	1	1	1
Angola			
men	102	107	112
women	90	100	103
Antigua and Barbuda			
men	1	1	2
women	2	2	2
United Arab Emirates			
men	29	19	23

Klar Lokalt intranät

Select per cent in the Edit and calculate listbox.

Table - Microsoft Internet Explorer provided by Statistiska Centralbyran ver 8

Arkiv Redigera Visa Favoriter Verktyg Hjälp

Bakåt Sök Favoriter Gå till Länkar

Adress http://localhost/pxweb2007/Dialog/SaveShow.asp

PX-WEB PX-WEB PX-WEB

Database - Subject area - Table - Variables and values

Edit and calculate Save As Graphs and Maps

Shortcuts: XLS PX CSV

Option 1. Select a variable as basis for the percent calculation OK

Option 2. Select a variable for which you will select a value as basis OK

Option 3. Select a datacells as basis, one value for each variable OK

☒ country of citizenship

☐ sex

☐ period

New Value Name: per cent

☒ Show original data and per cent ☐ Show per cent only

Foreign citizens by country of citizenship, sex and period

	2003	2004	2005
total			
men	235 994	238 360	238 771
women	240 082	242 781	241 128
Afghanistan			
men	3 305	3 599	3 654
women	2 770	3 182	3 287
Albania			
men	159	192	214
women	137	142	157
Algeria			
men	313	329	363
women	218	215	225

Klar Lokalt intranät

If option 2 is used the user select a value which will be 100%

Table - Microsoft Internet Explorer provided by Statistiska Centralbyran ver 8

Arkiv Redigera Visa Favoriter Verktyg Hjälp

Bakåt Sök Favoriter

Adress http://localhost/pxweb2007/Dialog/SaveShow.asp Gå till Länkar

PX-WEB PX-WEB PX-WEB

Database - Subject area - Table - Variables and values

Edit and calculate Save As Graphs and Maps

Shortcuts: XLS PX CSV

Select a value as basis for per cent OK

country of citizenship

total
Afghanistan
Albania
Algeria
Andorra

Foreign citizens by country of citizenship, sex and period

	2003	2004	2005
total			
men	235 994	238 360	238 771
women	240 082	242 781	241 128
Afghanistan			
men	3 305	3 599	3 654
women	2 770	3 182	3 287
Albania			
men	159	192	214
women	137	142	157
Algeria			
men	313	329	363
women	218	215	225
Andorra			
men	0	0	0
women	1	1	1

Klar Lokalt intranät

Result:

Table - Microsoft Internet Explorer provided by Statistiska Centralbyran ver 8

Arkiv Redigera Visa Favoriter Verktyg Hjälp

Bakåt Sök Favoriter

Adress http://localhost/pxweb2007/Dialog/SaveShow.asp Gå till Länkar

PX-WEB PX-WEB PX-WEB

Database - Subject area - Table - Variables and values

Edit and calculate Save As Graphs and Maps

Shortcuts: XLS PX CSV

Foreign citizens by country of citizenship, sex and period. Distributed by number and per cent.

	2003		2004		2005	
	number	per cent	number	per cent	number	per cent
total						
men	235 994	100.00	238 360	100.00	238 771	100.00
women	240 082	100.00	242 781	100.00	241 128	100.00
Afghanistan						
men	3 305	1.40	3 599	1.51	3 654	1.53
women	2 770	1.15	3 182	1.31	3 287	1.36
Albania						
men	159	0.07	192	0.08	214	0.09
women	137	0.06	142	0.06	157	0.07
Algeria						
men	313	0.13	329	0.14	363	0.15
women	218	0.09	215	0.09	225	0.09
Andorra						
men	0	0.00	0	0.00	0	0.00
women	1	0.00	1	0.00	1	0.00
Angola						
men	102	0.04	107	0.04	112	0.05
women	90	0.04	100	0.04	103	0.04
Antigua and Barbuda						
men	1	0.00	1	0.00	2	0.00
women	2	0.00	2	0.00	2	0.00
United Arab Emirates						
	--	--	--	--	--	--

Klar Lokalt intranät