

# Transport, Health and Environment

## A dynamic nexus

*Brinda Wachs, UNECE, Environment Division, THE PEP*



## The European health landscape

People live longer and have less children, migrate within and between countries, cities grow bigger.

Noncommunicable diseases dominate the disease burden.

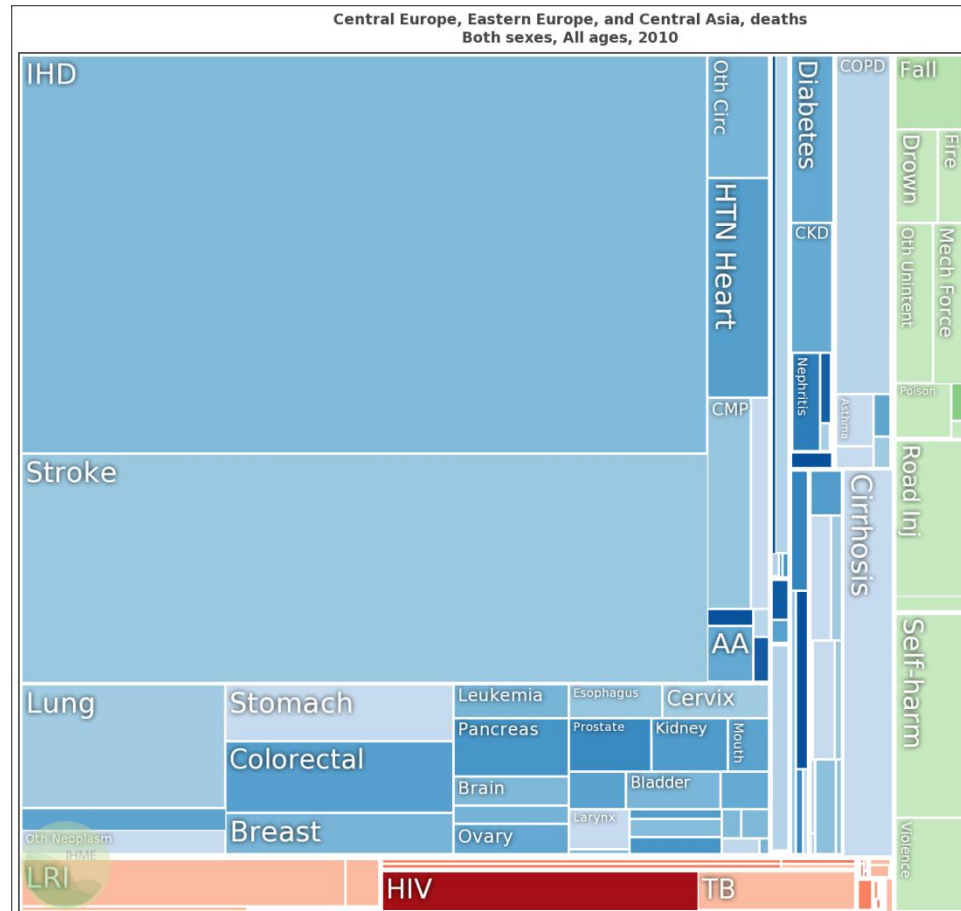
Depression and heart disease are leading causes to healthy life years lost.

Infectious diseases, such as HIV, tuberculosis remain a challenge to control.

Antibiotic-resistant organisms are emerging.

Health systems face rising costs.

Primary health care systems are weak and lack preventive services.

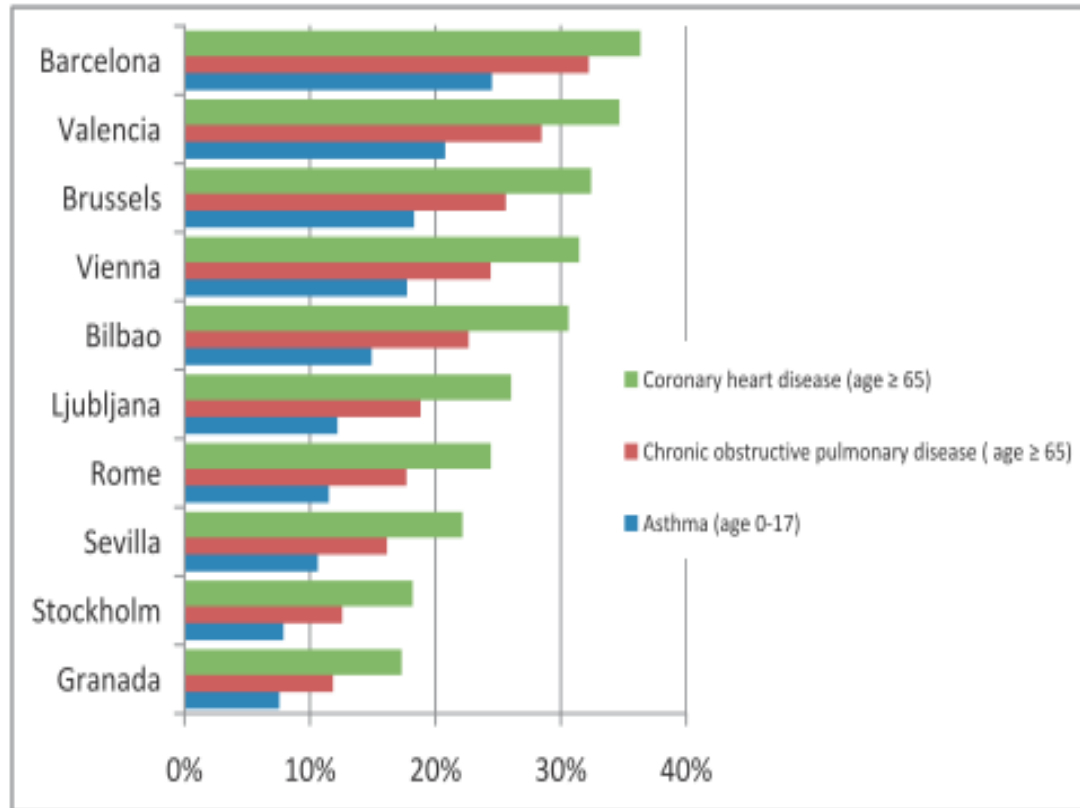


## Europe

Source: Institute for Health Metrics and Evaluation, University of Washington

# A significant fraction of non-communicable diseases is attributable to exposure to traffic-related air pollution

Percentage of population with chronic diseases whose disease could be attributed to living near busy streets and roads in 10 Aphekom cities



Perez, L. et al., 2013. Chronic burden of near-roadway traffic pollution in 10 European cities (APHEKOM network). *The European respiratory journal*, 42(3), pp.594–605.



## THE PEP Principle

Transport, Health and  
Environment:

*Working together*



## THE PEP Vision

*Green and healthy mobility and  
transport for sustainable  
livelihoods for all*



## THE PEP Goals



4 Amsterdam goals + 1 new  
proposed new goal:

*Integrate T,H,E, objectives into  
urban and spatial planning  
policies*

## THE PEP 2020



- Accessibility and adaptation
- New mobility needs
- Active mobility: walking and cycling
- Sustainable shared space



## THE PEP Implementation



- THE PEP Staffete
- THE PEP Partnerships
- National Transport, Health and Environmental Action Plans (NTHEAPs)
- THE PEP Academy: capacity building through summer schools

**THE PEP** Transport, Health  
and Environment  
Pan-European Programme



# 4th High-level Meeting Transport, Health and Environment

14 - 16 april 2014 - Paris - La Défense

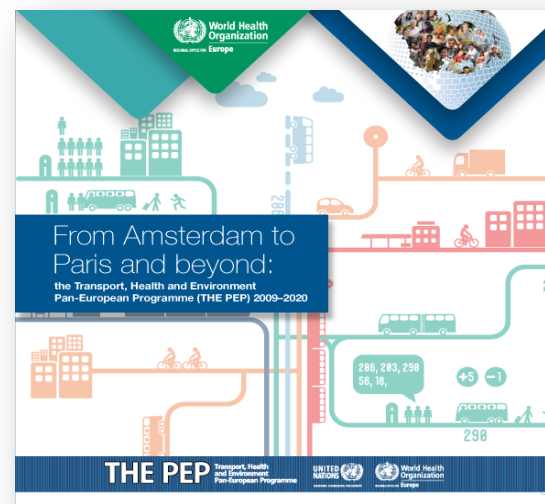
City in motion:  
people first!

[www.thepep.org](http://www.thepep.org)

## THE PEP Future:

**Integrating healthy life styles into sustainable transport and urban planning**

**Creating the liveable city: Smart Cities are people-centred cities...**



# THE PEP

Transport, Health  
and Environment  
Pan-European Programme



**Thank you for your attention!**  
**[www.thepep.org](http://www.thepep.org)**

